

City of Glendale, Community Services & Parks

Leisure Guide

SPRING 2024



PROGRAMS, ACTIVITIES AND PARKS
CHECK OUT OUR SPRING EGGSTRAVAGANZA event!



**Parks
Make
Life
Better!**



GlendaleCA.gov/Parks

[@MyGlendaleParks](https://twitter.com/MyGlendaleParks)

[#MyGlendaleParks](https://www.instagram.com/MyGlendaleParks)

What's Inside

Spring 2024

- 3 Greetings from the Director
- 4 Newsletter Information
- 5 New Service: Wander the Wilderness Bus
- 6-10 Special Events
- 11-12 Special Events - Historic Facilities
- 13-15 Party Packages
- 16-17 Day Camps - Registration Information
- 18 Day Camps - Spring Break
- 19-20 Specialty Camps - Spring Break
- 21-24 Day Camps - Summer
- 25-27 Specialty Camps - Summer
- 28-29 Youth & Family Services
- 30 Glendale Youth Alliance (GYA)
- 31 Drop-In Programs
- 32-33 Trails & Open Space Programs
- 34-35 Stone Barn Nature Center Programs
- 36 Verdugo Skate Park
- 37 Aquatics
- 38 Class Information
- 39 Class Registration Information
- 40 Youth Classes
- 41-43 Youth Sports
- 44 Adult Classes
- 45-46 Adult Sports
- 47 GCC Senior Classes
- 48-52 Senior Classes & Activities
- 53-54 Senior Services
- 55 Filming in Parks & Community Buildings
- 56-57 Tours of Historic Facilities in Glendale Parks
- 58-61 Historic Landmarks in Glendale Parks
- 62-68 Facility Reservations
- 69 Phone Directory
- 70 Map of Glendale Parks
- 71 Facility Information

City Council

Honorable, Daniel Brotman *Mayor*
Ara Najarian, Paula Devine, Ardashes "Ardy" Kassakhian, and Elen Asatryan

Parks, Recreation & Community Services Commission

Regina Alcazar, President

Commissioners:

Ara Kalfayan, Stephen Meek, Henrik Sardarbegian, and Susan Wolfson

CDBG Advisory Committee

Anita Quiñonez Gabrielian, *Chair*

Armik Avedisian, *Vice Chair*

Committee Members:

Zanku Armenian, Ronnie Gharibian, and Marina Manoukian

Office of the City Manager

Roubik Golanian, *City Manager*

John Takhtalian, *Assistant City Manager*

Community Services & Parks

Onnig Bulanikian, *Director*

Tereza Aleksanian, *Deputy Director - Admin, R&CS, Human Services*

Chris Peplow, *Interim Park Services Administrator*

Judith Velasco, *Workforce Development Administrator*

Arsine Isayan, *Homeless Programs Manager*

Maggie Kavarian, *Community Services Manager - CDBG*

Gabrielle Goglia, *Community Services Manager - R&CS*

Sevag Garabetian, *Community Services Manager - R&CS*

SATISFACTION GUARANTEE

Satisfaction is guaranteed on all programs. If you are not satisfied with the quality of our programs, for any reason, we encourage you to contact us immediately so that we can work to resolve your concerns and improve the quality of our programs for all participants.

Si tiene necesidad de interpretación, favor de llamar al (818) 548-2782.

Հայերեն տեղեկությունների համար զանգահարել հետևյալ
հեռախոսահամարով (818)548-2000

Community Services & Parks Administration

613 E. Broadway, Room 120, Glendale, CA 91206

(818) 548-2000 | [GlendaleCA.gov/CSP](https://www.glendaleca.gov/CSP)



@MyGlendaleParks



[facebook.com/MyGlendaleParks](https://www.facebook.com/MyGlendaleParks)





Spring 2024

"Spring is proof that there is beauty in new beginnings" - Matchona Dhlwayo

Let the beauty of Spring, the season of possibility, rebirth, and opportunity, inspire you to try something new or continue on your path of growth and renewal. Community Services & Parks offers a vast array of events, classes, programs, and services to meet your needs. We have something for everyone!

Take advantage of the longer daylight hours by getting the family together or taking some time to yourself and visiting one of our neighborhood parks, trails and open space areas, and historic homes. Reserve one of our picnic areas or community buildings for a fun gathering or celebration.

Youth of all ages are invited to participate in Spring Break Camps, youth sports activities, and Life Long Learning classes. We know the importance of planning ahead, so we've included Summer Day Camp and Aquatics Program information inside too!

Adults are encouraged to enroll in Life Long Learning Classes, such as yoga or visual art; participate in open play badminton; and tennis classes. Our adult programs and activities are offered at a variety of times to meet everyone's busy schedule.

Senior adults will enjoy taking part in ongoing education and leisure programs. A nutritional meals program, and a case management, counseling and referral program are also available. May is Older American's month, so look for special celebrations and activities.

Last but not least, the Community Services & Parks Department is proud to present several special events this season, including Spring Eggstravaganza and Cesar Chavez Celebration. Plan ahead for the annual Cruise Night event and Verdugo Mountains 10K Trail Run & Hike (Yes, its' back!), taking place this summer.

Don't miss out on the latest information; get on our e-mail list, sign up to receive our monthly CSP Newsletter, and follow us on Twitter and Facebook @MyGlendaleParks. Look inside for details.

Respectfully,

**Parks
Make
Life
Better!**

Onnig Bulanikian, Director
Community Services & Parks Department

Community Services & Parks (CSP) Monthly E-Newsletter

Get the most up-to-date information about what is happening in the Community Services & Parks Department by signing up to receive the department's monthly E-Newsletter.

Learn about upcoming events, community meetings, registration deadlines, parks projects, ongoing programs and services, program success stories, and more.



Pacific Community Center & Park's 20th Anniversary Celebration and Annual Fall Festival

Pacific Community Center

[501 S. Pacific Ave. Glendale, CA 91204](https://www.glendaleca.gov/501-S-Pacific-Ave-Glendale-CA-91204)

October 21, 2023

11:00 a.m. to 2:00 p.m.



We invite you to our Annual Fall Festival, featuring food, games, arts & crafts, face painting, music, a bounce house, pumpkin patch, carnival games, opportunity drawings, and the Glendale Rocks! climbing wall.

The event is free and open to the public. For more information, call (818) 548-4098.

One Glendale, After School Youth Sports Program: Flag Football Championship Day

Pacific Community Center

[501 S. Pacific Ave., Glendale, CA 91204](https://www.glendaleca.gov/501-S-Pacific-Ave-Glendale-CA-91204)

Friday, October 20, 2023

Consolation Game Begins: 6:30 p.m.

Championship Game Begins: 7:30 p.m.

Public Input on Community Needs



Visit [GlendaleCA.gov/CSPNewsletter](https://www.glendaleca.gov/CSPNewsletter) to subscribe.

(P.S. We never make your e-mail address available to any other company or organization.)

Wander the Wilderness Bus

Nature is calling, and Wander the Wilderness Bus is answering!

Enjoy Deukmejian Wilderness Park without worrying about how to get there!

This free shuttle operates every weekend to help you and your family get to the park.



ALTERNATING SATURDAYS

501 S. Pacific Ave., Glendale 91204

Departure Times/Departure Location

Pacific Park 9:00 AM | Deukmejian 11:00 AM

Pacific Park 11:30 AM | Deukmejian 1:00 PM

FEBRUARY 3 and 17

MARCH 2, 16 and 30

ALTERNATING SUNDAYS

820 E. Maple St., Glendale 91205

Departure Times/Departure Location

Maple Park 9:00 AM | Deukmejian 11:00 AM

Maple Park 11:30 AM | Deukmejian 1:00 PM

JANUARY 28

FEBRUARY 11 and 25

MARCH 10 and 24

Adult supervision is required!

One adult for every three children 17 years and under is required.

Visit GlendaleCA.gov/Trails or call (818) 937-7428 for more information.

Հայերեն տեղեկությունների համար զանգահարե՛լ (818) 548-2000.

Para información en español, llame a (818) 548-2000.



Community Services
& Parks



Partnering
with your
community

Funding provided by Metro,
a partner in our community.



@MyGlendaleParks



Reasonable accommodations will be made upon request. Please notify us within 72 hrs. prior to visit date.



SPRING Eggstravaganza

Saturday, March 23, 2024
11:00 AM - 2:00 PM

The celebration will feature Community and Department Informational Booths, Glendale Rocks! Climbing Wall, Carnival Games, an Egg Hunt, and a Photo Opportunity with the Easter Bunny.

EGG HUNT

11:30 AM

4 Year Olds & Younger

11:50 AM

5 Year Olds

12:10 PM

6 Year Olds

12:30 PM

7 Year Olds

12:50 PM

8 Year Olds

1:10 PM

9 Year Olds

1:25 PM

10 Year Olds

1:40 PM

11 & 12 Year Olds



Please don't forget to bring your baskets. Adults will not be permitted on the field for age groups 5 years old and older.

PACIFIC COMMUNITY CENTER

501 S. Pacific Ave., Glendale, CA 91204

For more information, call 818-548-4098.



Community Services
& Parks

Parks
Make
Life
Better!



@MyGlendaleParks





CELEBRATING CESAR CHAVEZ

THE CITY OF GLENDALE INVITES YOU
TO CELEBRATE THE LIFE AND WORK OF

CESAR CHAVEZ

WITH A CULTURAL CELEBRATION

SATURDAY, MARCH 30, 2024

1:00 PM TO 4:00 PM

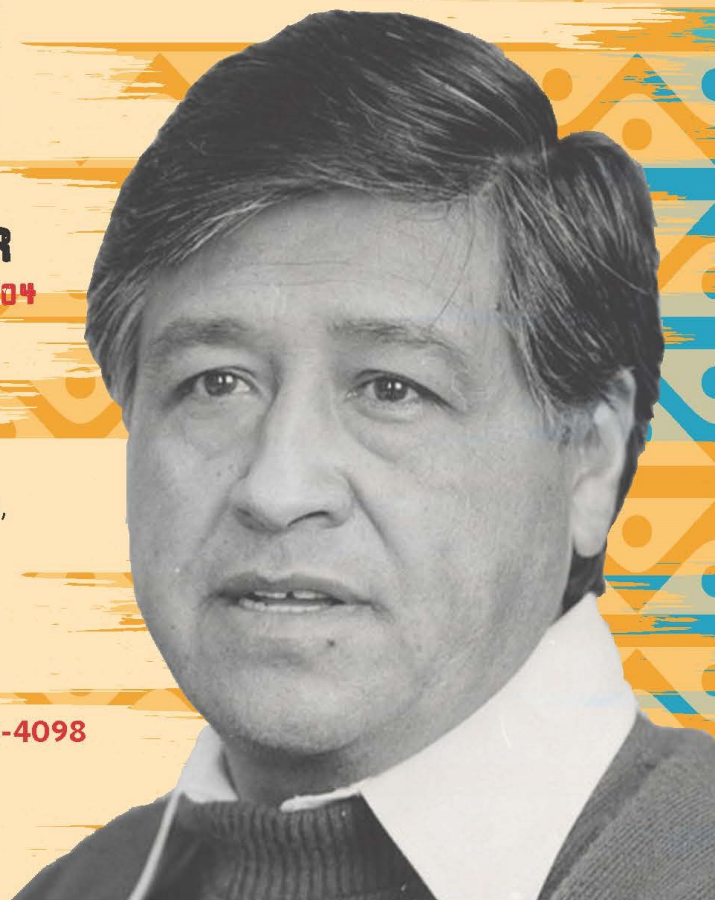
The event begins at 1:00 PM and the official
program will begin at 1:30 PM

PACIFIC COMMUNITY CENTER

501 S. PACIFIC AVE, GLENDALE, CA 91204

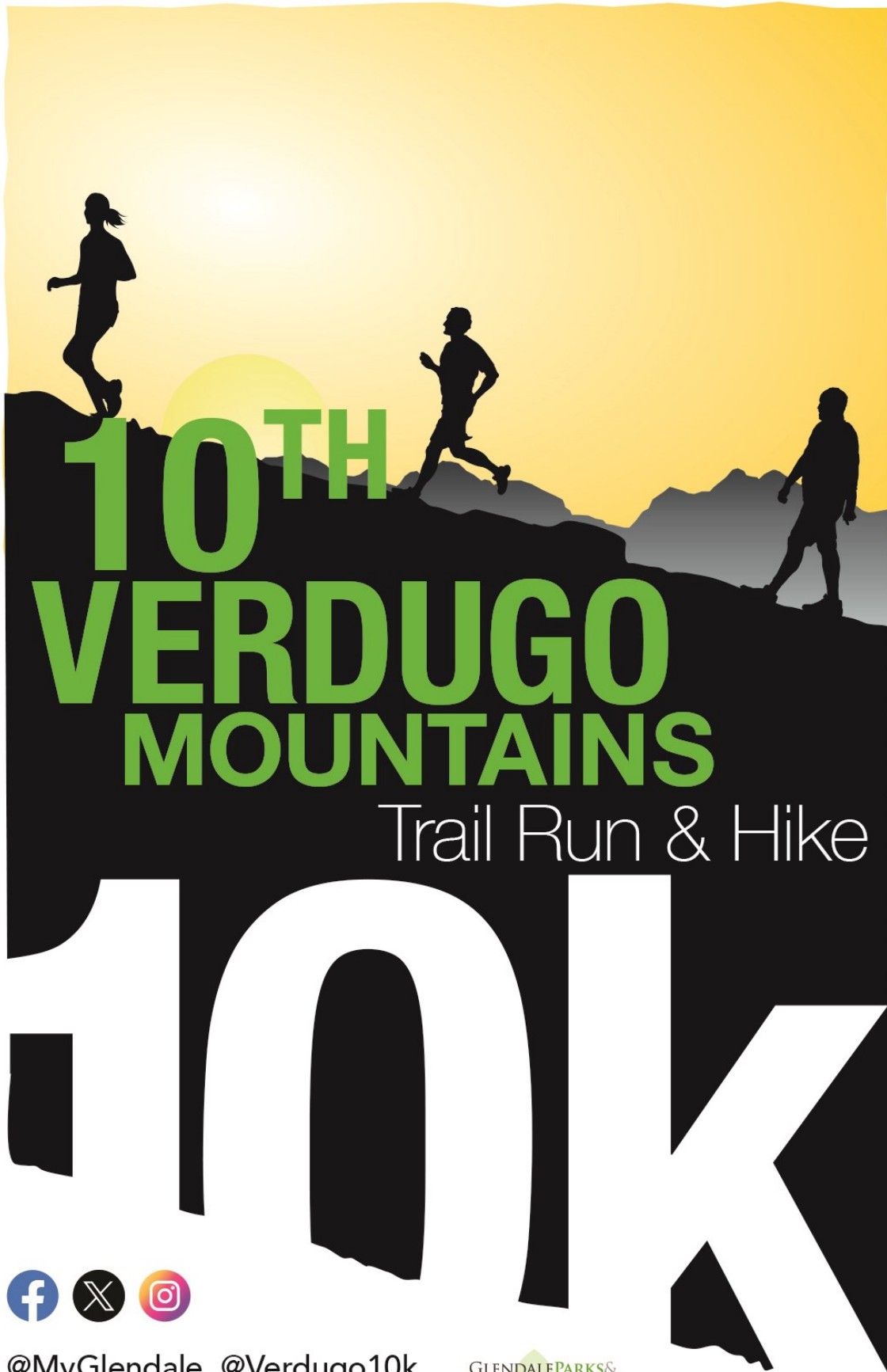
The celebration will feature community booths,
Glendale Rocks! Climbing wall, live performances,
an opportunity drawing and FREE TACOS served
from 1:00 PM until food runs out.

For additional information call **(818) 548-4098**
or visit **GlendaleCA.gov/Chavez**



@MyGlendale #MyGlendale

www.runtheverdugos.com



GLENDALE, CA MAY 5, 2024



@MyGlendale @Verdugo10k

GLENDALE PARKS &
OPEN SPACE
FOUNDATION

SAVE THE DATE!

Fireworks! Live Entertainment! Family Fun & Activities!

CRUISE NIGHT

Saturday, July 20, 2024 • 5:30 p.m. – 10:30 p.m.
In the heart of Glendale CA, on Brand Blvd.

Registration includes a swag bag with a FREE event t-shirt.
Modified Imports and Exotic Cars will be accepted!



GlendaleCruiseNight.com
Information Hotline: (818) 548-6464
Trophies Awarded! (Categories at Judges' discretion)



@CruiseNightGlendale #GlendaleCruisenight

PARENT'S NIGHT OUT

Drop off the kids for a night of fun activities, friends, food and a movie.
The fee is \$15.00 per child, ages 6 to 12 years old.
Participants are encouraged to bring pajamas,
a blanket and a pillow.

Pacific Community Center

501 S. Pacific Ave., Glendale, CA 91204

Dates: February 16, 2024 and May 10, 2024

Time: 6:00 p.m. - 12:00 a.m.

Sparr Heights Community Center

1613 Glencoe Way, Glendale, CA 91208

Dates: February 23, 2024 and April 26, 2024

Time: 6:00 p.m. - 12:00 a.m.

For more information, please call:

(818) 548-4098 for Pacific Community Center or
(818) 548-2187 for Sparr Heights Community Center



THE GLENDALE HISTORICAL SOCIETY PRESENTS

A Victorian Easter Egg Hunt at the Doctors House Museum

Sunday, March 24, 2024 1:30pm-3:30pm

Please join us for outdoor family-friendly festivities kicking off with an Easter Egg Hunt on the rolling lawns of the Doctors House Museum. Celebrations include traditional Victorian games, children's story time, olde-fashioned hand-churned ice cream, with an opportunity to be greeted by the Easter Bunny!

As an added bonus, children young and old will find delight in a puppet show featuring Rene's Marionettes.

Guests are encouraged to attend in their Easter finest, and children who wish to join in the Easter Egg Hunt should bring their own baskets. Guests are also welcome to bring their own family picnics to enjoy on the beautiful lawns.

Space is limited for admission. Registration is only available online at glendalehistorical.org/Victorian-easter. \$15 per person, \$10 per TGHS member.

Free admission for anyone under the age of one. No in-person registration will take place. Check in begins at 1:00pm.

The Doctors House is located in the northwest corner of Brand Park at 1601 West Mountain Avenue, Glendale 91201.

For more information visit:
<https://glendalehistorical.org>



Visit www.glendalehistorical.org

The Glendale Historical Society is a non-profit, 501(c) 3, tax-exempt, all volunteer organization dedicated to the conservation and celebration of Glendale's history and architectural heritage.

Find us on  



“Shoseian” Whispering Pine Teahouse & Friendship Garden
Inside Brand Park, 1601 West Mountain St.
Glendale, CA 91201; (310) 849-5432

The Friends of Shoseian hosts events at the Teahouse and Friendship Garden on the third Sunday of the month. All events are family-friendly and open to the community.

Sakura Matsuri (Cherry Blossom Festival)

The annual Sakura Matsuri (Cherry Blossom Festival) is a free event with tea ceremonies, martial arts, music, and more!

Date: March 17, 2024
Time: 9:00 a.m.—2:00 p.m.
Fee: \$25 per person (Tea Ceremony only)

Tea Whisking Workshop

Learn how to make matcha as it is traditionally prepared — with a bowl and whisk!

Date: April 21, 2024
Time: 11:00 a.m. - 12:30 p.m.
Fee: \$25 per person

Tea Ceremony with Urasenke Tankokai LA Association

Experience the essence of a Japanese tea ceremony!

Date: May 19, 2024
Time: 11:00 a.m. - 1:00 p.m.
Fee: \$25 per person

Visit GlendaleTeahouse.org for more information.
Please RSVP to: Info@GlendaleTeahouse.org.



Did you know that as of
September 2023 the Doctors House is
officially included in the National
Register of Historic Places?

Save the Date
for the community celebration on
July 20, 2024!

Doctors House Museum
Inside Brand Park, 1601 W. Mountain St.
Glendale, CA 91201; (818) 242-7447

2:00 p.m. - 4:00 p.m.
Sunday Tours of the Doctors House Museum.

Please visit GlendaleHistorical.org for more
information on the tours.





Party on the Go!

Each party package is designed for children ages 5 - 12 and will include arts and crafts, sports and games. The basic **"Party on the Go!"** package will include two staff for two hours and a combination of up to 6 games or activities for up to 12 children. Additional fees will apply for larger packages.

Programs limited to customers who have a valid Facility Use Permit at a City of Glendale, Community Services & Parks Department facility.

FEES:

- Standard pricing: \$300 for the first 2 hours, up to 12 participants
- \$100 for each additional hour, up to 12 participants
- \$10 for each additional child up to 24 participants
- Non-profit rates are available upon request and approval. You must provide proper tax documentation prior to approval.

Half of the total rental fees are due at the time of reservation to guarantee date.



Standard Package includes six (6) from the following:

Games

Potato Sack Races
Capture the Flag
Balloon Toss
Bingo
Hula Hoop Contest
Frisbee Distance Throw
Obstacle Course

Arts and Crafts

Paint art
Clay art
Foamy art
Bead art
Wooden art
Glitter art
Coloring

For more information, please call: (818) 548-4098.

Glendale ROCKS! Climbing Wall

Glendale Rocks! portable climbing wall is 26 vertical feet of pure fun and excitement! The wall can be used for fundraisers, company events, grand openings, physical education classes or special events. The wall can handle 4 climbers at a time and up to 50 climbers per hour. The standard rental package will include two employees, the wall, and safety equipment for a two hour period.

Program is limited to the Glendale and La Crescenta area, pending a site visit.

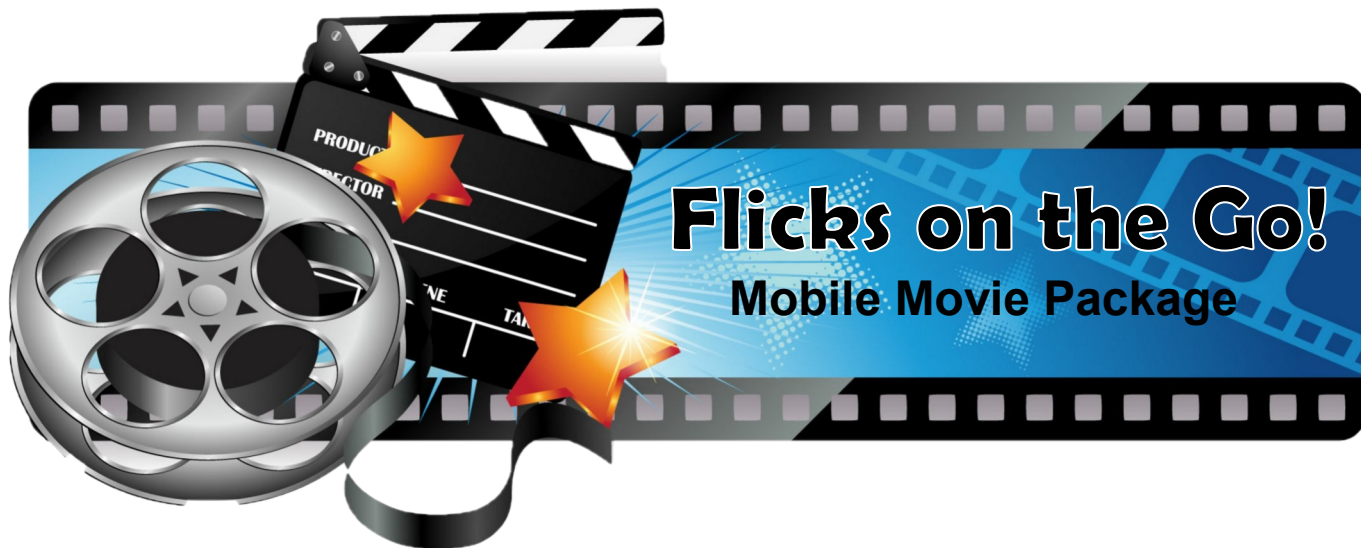
FEES:

- Standard pricing: \$300 for the first 2 hours, up to 50 participants
- \$100 for each additional hour, up to 50 climbers
- Please contact the program supervisor for events open to the public or for groups of more than 100 climbers.
- Non profit rates are available upon request and approval. You must provide proper tax documentation prior to approval.

Half of the total rental fees are due at the time of reservation to guarantee date.

For more Information,
please call (818) 548-4098.





Watching a movie under the moonlight brings back the days of the drive-in era and will surely have nostalgic appeal to families throughout our community. Watching a movie, playing video games or streaming content on a large screen during your outdoor special event will definitely elevate your event and add a hip factor. We have two packages available for your special event!

Flicks on the Go! – Package A

- 17 foot wide by 10 foot tall large projection screen with high powered video projection
- High Powered Sound System with 4 Speakers up to 1,000 Watt max output each
- Blue Ray DVD Player (Customer is responsible for license fees, obtaining rights to display the content, and providing the content in a format compatible with existing equipment. We highly discourage use of a streaming digital content solution.)
- Generator to provide power
- 3 employees for delivery, installation, operation and breakdown
- Carnival games and craft tables are available for an additional fee

Flicks on the Go! – Package B

- 15 foot wide by 8 foot tall LED Screen with 936 X 520p (4.81mm) resolution
- Height Adjustable and full 360 degree rotation for optimal viewing
- High Powered Sound System with 2 Speakers up to 1,000 Watt max output each
- Blue Ray DVD Player
- Dish Network Satellite Feed (Customer is responsible for license fees, obtaining rights to display the content, and providing the content in a format compatible with existing equipment. We highly discourage use of a streaming digital content solution.)
- HDMI and SDI auxiliary inputs for live feed
- HDMI auxiliary input for gaming consoles (Gaming console not included)
- Generator to provide power
- Carnival games and craft tables are available for an additional fee



**For program information, please call
(818) 548-4098.**

Spring Break and Summer Day Camps

The Community Services & Parks Department is pleased to offer day camps each season. Please see the individual camp listings for specific details on each camp.

Camps in this Issue: Important Dates

Season	Scholarship/Discount Applications Due by 5 p.m.	Registration Begins	Camp Dates
Spring Break	January 12, 2024	February 12, 2024	March 18-22, 2024
Summer	February 16, 2024	March 4, 2024 (Glendale Residents ONLY) March 6, 2024 (General Registration)	June 10 - August 16, 2024

Registration

Online (preferred): Registration is available at [MyGlendaleParks.com](https://myglendaleparks.com).

In Person: Visit the community center where the camp is taking place or the Customer Service Office located at the Civic Auditorium, 1401 N. Verdugo Rd., Glendale, CA 91208.

Phone: Call the community center where the camp is taking place, or the Customer Service Office at (818) 548-2752. *(Staff may be busy assisting in-person customers. Thank you for your patience.)*

Residency Status

The Community Services & Parks Department (CSP) offers reduced Glendale Resident rates for day camps to customers who reside within Glendale Unified School District boundaries and have provided the required proof of residency. Customers only need to verify residency once per year during any season, but must re-submit proof every summer regardless of which season residency status was last verified. **Proof of residency can be provided at the time of in-person camp registration, but in order to obtain Glendale Resident rates while registering online or by phone, residency status must be verified in advance.**

You can obtain residency status in advance of camp registration by emailing a copy of your two most recent utility bills or a copy of your current, executed rental agreement to our Customer Service Office at CSPCustomerService@GlendaleCA.gov. Please include your full name, valid address, and a copy of the proof in the email. Emails will be reviewed within two (2) business days, and you will receive an email response confirming residency when it has been completed.

Customers not verified as Glendale Residents at the time of registration will be charged non-resident rates and will NOT be refunded the difference for any non-resident rates paid, even if proof is provided at a later time. 2024 residency verification will begin on January 2, 2024, and continues throughout the year! Prior to registering for any of our camps, please make sure to complete the residency verification, especially if you wish to register online.

You may also pre-register in person during business hours at any of the following locations:

Adult Recreation Center

201 E. Colorado Street
Glendale, CA 91205
(818) 548-3775

Customer Service Office

1401 N. Verdugo Rd.
Glendale, CA 91208
(818) 548-2184

Glendale Sports Complex

2200 Fern Lane
Glendale, CA 91208
(818) 548-6420

Maple Park Community Center

820 E. Maple St.
Glendale, CA 91205
(818) 548-3694

Pacific Community Center

501 S. Pacific Ave.
Glendale, CA 91204
(818) 548-4098

Pacific Community Pool

509 S. Pacific Ave.
Glendale, CA 91204
(818) 937-7433

Sparr Heights Community Center

1613 Glencoe Way
Glendale, CA 91208
(818) 548-2188

Stone Barn Nature Center

3429 Markridge Rd.
Glendale, CA 91214
(818) 937-7428

Scholarship and Discount Opportunities

Glendale residents may be eligible to receive a scholarship for camps at Maple Park Community Center or Pacific Community Center. A discount is also available for Glendale residents at all locations, based on household income levels. Please visit GlendaleCA.gov/DayCamps and click on Scholarship and Discount Opportunities for details. Additional scholarships/discounts may be available in the summer based on grant funding. Check the website for more details.

Late Registration and Cancellation Policy

- A \$20 late registration fee will be charged per camper for payments not received by Wednesday at 5:00 p.m. prior to the week for which you are registering.
- A cancellation fee of \$20 per week, per child will be assessed for all transfers and cancellations of camp locations, dates of enrollment, or participation.

Day Camp T-Shirts

A camp T-shirt may be purchased at camp for \$5 (cash or check). Shirts must be purchased for camps that go on excursions and must be worn on excursion day.

Special Needs Accommodations

The Community Services & Parks Department will provide reasonable accommodations toward the inclusion of a participant. Please contact the Therapeutic Recreation Program supervisor at (818) 548-3783 two weeks prior to the start of the program. Ample time is required to determine the needs for each request. Children who are accompanied by a one-to-one aide must have the aide present during their time in the program. All aides must undergo a background check through the City of Glendale, and must be approved before beginning work. **Children who require an aide may not begin the program without an approved aide.**

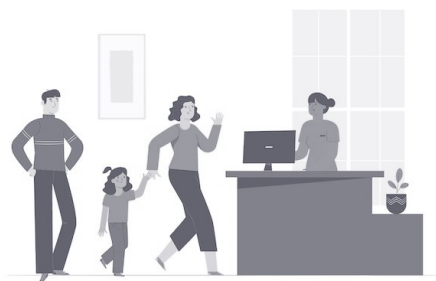
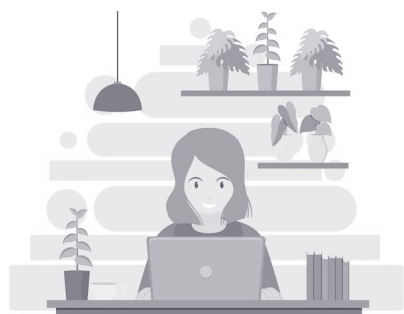
Payment Methods

Online: Credit Card

Over the Phone: Credit Card*

In Person: Cash, Check, or Credit Card*

* All In-Person and Phone Credit Card transactions will incur a non-refundable 2.5% service fee.



Kool Dayz Spring Camp

Pacific Community Center
 501 S. Pacific Ave., Glendale, CA 91204
 For information, call (818) 548-4098

Kids will have fun making crafts, playing sports and games, competing in contests and making new friends. Campers must provide their own lunch, drink and snacks daily.

5-Day Camp

Dates: Monday - Friday, March 18 - 22, 2024

Ages: 6-14

	<u>Number</u>	<u>Glendale Resident Fees</u>	<u>Non-Resident Fees</u>	<u>Times</u>
Full Day	462401-01	\$85/week/child	\$100/week/child	9:00 a.m. - 4:00 p.m.
Before Care	462402-01	\$20/week/child	\$20/week/child	7:00 a.m. - 9:00 a.m.
After Care	462403-01	\$20/week/child	\$20/week/child	4:00 p.m. - 6:00 p.m.

Sparr-Tacular Spring Camp

Sparr Heights Community Center
 1613 Glencoe Way, Glendale, CA 91208
 For information, call (818) 548-2187

Flowers are blooming and Spring Break fun is here at the Sparr Heights Community Center! Children ages 6 - 12 will enjoy games, crafts, and a special treat on Friday. Children must bring a sack lunch Monday through Thursday.

5-Day Camp

Dates: Monday - Friday, March 18-22, 2024

Ages: 6-12

	<u>Number</u>	<u>Glendale Resident Fees</u>	<u>Non-Resident Fees</u>	<u>Times</u>
Half Day	482401-01	\$65/week/child	\$80/week/child	12:00 p.m. - 6:00 p.m.



See pages 16 - 17 for important day camp information.



Specialty Skate Camps - Spring

Verdugo Skate Park

1621 Cañada Blvd., Glendale, CA 91208

For information, call (818) 548-2786 or (818) 937-7440

Join THE SKATESIDE for spring camp this spring! This is a skateboard skill-focused camp that brings you everything you love about skateboarding. Learn how to shred the Verdugo Skate Park, and learn basic skateboard skills or take your skills to the next level. Great for beginners just starting, and skaters who want to advance past intermediate. Helmet, elbow pads, knee pads, and wrist guards are required to participate.

Ages: 5-16

1-DAY CAMPS

Dates: February 12

February 19

March 25

April 24

May 27

Half Day

Time: 9:00 a.m. - 11:50 a.m.

Fee: \$135/child/day

if registering after 2/20/24 \$145/child/day

Full Day

9:00 a.m. - 2:50 p.m.

\$189/child/day

\$199/child/day

SPRING BREAK CAMPS

Camp 1 Dates: March 18-22, 2024 (M - F)

Camp 2 Dates: March 25-29, 2024 (M - F)

Half Day

Time: 9:00 a.m. - 11:50 a.m.

Fee: \$400/child/week

if registering after 2/20/24 \$425/child/week

Full Day

9:00 a.m. - 2:50 p.m.

\$525/child/week

\$575/child/week

See pages 16 - 17 for important day camp information.

Pacific Skate School Specialty Skate Camp - Spring Break

Palmer Park
610 E. Palmer Avenue, Glendale, CA 91205

Join THE PACIFIC SKATE SCHOOL for spring camp this spring! We welcome your camper with Sk8 talk, stretches and warm-ups. Then we move on to some light skateboard drills before jumping in to some special activities and games. Followed by a halftime lunch (snacks not provided). Afterwards, we continue working on drills followed by more fun games and finally the wrap-up towards the end. Helmet, elbow pads, knee pads, and wrist guards are required to participate.

Ages: 6 - 11



Number
 432406-01

Dates
 March 18-22, 2024

Fee
 \$595/week/child

Time
 9:00 a.m. - 1:00 p.m.



Nature Camp - Spring Break

Stone Barn Nature Center at Deukmejian Wilderness Park
3429 Markridge Road, Glendale, CA 91214
For information, call (818) 937-7428

Campers will gain appreciation for the nature in their own backyards through exploration of the brand new Stone Barn Nature Center and the rugged 700 acres Deukmejian Wilderness Park has to offer! Participants will experience hands-on activities such as interpretive hikes through the park, nature crafts, and might even see a wild animal or three! Please send your child in protective outdoor clothing and sturdy shoes, and send lunch, a daily snack, and a refillable water bottle.

Ages: 6 - 12 (Child must be 6 years old by August 11, 2023)

Days: Monday - Friday, March 18-22, 2024

	<u>Glendale Resident Fees</u>	<u>Non-Resident Fees</u>	<u>Times</u>
Full Day	\$275/week/child	\$290/week/child	9:00 a.m. - 4:00 p.m.
Before Care	\$ 20/week/child	\$ 20/week/child	7:00 a.m. - 9:00 a.m.
After Care	\$ 20/week/child	\$ 20/week/child	4:00 p.m. - 6:00 p.m.

Evolution Basketball Spring Break Camps

Verdugo Park (South End), on the Basketball Court
1621 Cañada Blvd., Glendale, CA 91208

Evolution Basketball teaches the fundamental movement skills and overall motor skills for basketball. The courses are designed to teach the fundamental concepts of basketball, dribbling and passing, shot techniques, spatial awareness, and teamwork. Levels are age-appropriate, and gradually increase children's ability to help them play the sport of basketball. A jersey is included for all participants.

5-Day Spring Break Camp

Dates: Monday - Friday, March 18-22, 2024

Time: 9:00 a.m. - 12:00 p.m.

Fee: \$169 (includes jersey)

<u>Number</u>	<u>Level/Ages</u>
440806-01	Level 2 (5-7 years)
440806-02	Level 3 (8-11 years)



See pages 16 - 17 for important day camp information.

Kool Dayz Summer Camp

Pacific Community Center
501 S. Pacific Ave., Glendale, CA 91204
For information, call (818) 548-4098

Campers will spend the day with old friends and make new ones in a fun, supervised, indoor and outdoor setting. Swimming (Full Day and Half Day Afternoon participants only), games, arts and crafts, music, dance and sports are part of the Kool day. Hot/cold lunch will be provided as part of the GUSD Seamless Summer Lunch Program. Lunch will not be provided during Week 10 of camp.

Dates: Monday - Friday, June 10 - August 16, 2024
Ages: 6 - 12 (Child must be 6 years old by June 10, 2024)

Weekly Theme

Week 1:	June 10-14	TBD
Week 2:	June 17-21*	TBD
	<i>(no camp on Wednesday, June 19)</i>	
Week 3:	June 24-28	TBD
Week 4:	July 1-5*	TBD
	<i>(no camp on Thursday, July 4)</i>	
Week 5:	July 8-12	TBD
Week 6:	July 15-19	TBD
Week 7:	July 22-26	TBD
Week 8:	July 29-August 2	TBD
Week 9:	August 5-9	TBD
Week 10:	August 12-16	TBD



Glendale

	<u>Resident Fee</u>	<u>Non-Resident Fee</u>	<u>Time</u>
Full Day	\$ 85/week/child	\$100/week/child	9:00 a.m. - 4:00 p.m.
Half Day AM	\$ 60/week/child	\$ 75/week/child	9:00 a.m. - 1:00 p.m.
Half Day PM	\$ 60/week/child	\$ 75/week/child	12:00 p.m. - 4:00 p.m.
Before Care	\$ 20/week/child	\$ 20/week/child	7:00 a.m. - 9:00 a.m.
After Care	\$ 20/week/child	\$ 20/week/child	4:00 p.m. - 6:00 p.m.

Kinder Summer Camp

Pacific Community Center
501 S. Pacific Ave., Glendale, CA 91204
For information, call (818) 548-4098

Kinder Camp is a great way to introduce your preschooler or kindergartener to day camp. Your camper will interact with other campers, make new friends, and develop social skills. Campers will have indoor and outdoor games, sports, arts and crafts, and story time. *We do not program napping into the camp. While we are happy to provide Before Care and/or After Care, please consider if your child can cope with being away from parents/guardians for 11 hours a day.* Hot/cold lunch will be provided as part of the GUSD Seamless Summer Lunch Program. Lunch will not be provided during Week 10 of camp.

Dates: Monday - Friday, June 10 - August 16, 2024
Ages: 4 - 5 (Child must be 4 years old by June 10, 2024, and be able to perform restroom tasks independently)

Weekly Theme

Week 1:	June 10-14	TBD
Week 2:	June 17-21*	TBD
	<i>(no camp on Wednesday, June 19)</i>	
Week 3:	June 24-28	TBD
Week 4:	July 1-5*	TBD
	<i>(no camp on Thursday, July 4)</i>	
Week 5:	July 8-12	TBD
Week 6:	July 15-19	TBD
Week 7:	July 22-26	TBD
Week 8:	July 29-August 2	TBD
Week 9:	August 5-9	TBD
Week 10:	August 12-16	TBD

Glendale

	<u>Resident Fee</u>	<u>Non-Resident Fee</u>	<u>Time</u>
Full Day	\$105/week/child	\$120/week/child	9:00 a.m. - 4:00 p.m.
Half Day AM	\$ 60/week/child	\$ 75/week/child	9:00 a.m. - 1:00 p.m.
Half Day PM	\$ 60/week/child	\$ 75/week/child	12:00 p.m. - 4:00 p.m.
Before Care	\$ 20/week/child	\$ 20/week/child	7:00 a.m. - 9:00 a.m.
After Care	\$ 20/week/child	\$ 20/week/child	4:00 p.m. - 6:00 p.m.



* Fees will be prorated for shorter weeks.

See pages 16 - 17 for important day camp information.



Travelin' Teens Summer Camp

Pacific Community Center
501 S. Pacific Ave., Glendale, CA 91204
For information, call (818) 548-4098

Teen campers will explore fun Glendale locations and surrounding communities. They will make new friends, swim, go on field trips and chill with other teens. Field trips may include a trip to the beach, movies, bowling, hiking, skating, Citywalk, the LA Zoo, and more! The cost of admission is included in the registration fee. Lunch on excursion days is not included in the fee, however. Teens will also participate in a weekly walking field trip to places like the Glendale Galleria or Americana at Brand. These walking field trips may have a cost based on your teen's allowance and your budget. Hot/cold lunch will be provided as part of the GUSD Seamless Summer Lunch Program. Lunch will not be provided during Week 10 of camp. Parents will need to pre-purchase meal cards or send a prepaid credit card with their child for cashless field trip locations. This will allow campers to purchase food on field trips where no outside food or cash is permitted by the location.

5-Day Camp

Dates: Monday - Friday, June 10 - August 16, 2024
Ages: 12 - 14 (Child must be 12 years old by June 10, 2024)

	<u>Field Trip Location / Day</u>
Week 1: June 10-14	TBD
Week 2: June 17-21*	TBD
	<i>(no camp on Wednesday, June 19)</i>
Week 3: June 24-28	TBD
Week 4: July 1-5*	TBD
	<i>(no camp on Thursday, July 4)</i>
Week 5: July 8-12	TBD
Week 6: July 15-19	TBD
Week 7: July 22-26	TBD
Week 8: July 29-August 2	TBD
Week 9: August 5-9	TBD
Week 10: August 12-16	TBD

	<u>Glendale Resident Fee</u>	<u>Non-Resident Fee</u>	<u>Time</u>
Full Day	\$150/week/child	\$165/week/child	9:00 a.m. - 4:00 p.m.
Before Care	\$ 20/week/child	\$ 20/week/child	7:00 a.m. - 9:00 a.m.
After Care	\$ 20/week/child	\$ 20/week/child	4:00 p.m. - 6:00 p.m.

* Fees will be reduced for shorter weeks.



See pages 16-17 for important day camp information.

Maple Starz Summer Camp

Maple Park Community Center
820 E. Maple St., Glendale, CA 91205
For information, call (818) 548-3694 or (818) 548-3783

Children will spend the day with old friends and make new ones in a fun, supervised, indoor and outdoor setting. Games, arts and crafts, music, sports, and water fun are included in the fee. Hot/cold lunch will be provided as part of the GUSD Seamless Summer Lunch Program. Lunch will not be provided during Week 10 of camp. Space is limited; register early.

Dates: Monday - Friday, June 10 - August 16, 2024
Ages: 6 - 12 (Child must be 6 years old by June 10, 2024)

		<u>Weekly Theme</u>
Week 1:	June 10-14	TBD
Week 2:	June 17-21*	TBD
	<i>(no camp on Wednesday, June 19)</i>	
Week 3:	June 24-28	TBD
Week 4:	July 1-5*	TBD
	<i>(no camp on Thursday, July 4)</i>	
Week 5:	July 8-12	TBD
Week 6:	July 15-19	TBD
Week 7:	July 22-26	TBD
Week 8:	July 29-August 2	TBD
Week 9:	August 5-9	TBD
Week 10:	August 12-16	TBD

	<u>Glendale Resident Fee</u>	<u>Non-Resident Fee</u>	<u>Time</u>
Full Day	\$ 75/week/child	\$ 90/week/child	9:00 a.m. - 4:00 p.m.
Half Day AM	\$ 60/week/child	\$ 75/week/child	9:00 a.m. - 1:00 p.m.
Half Day PM	\$ 60/week/child	\$ 75/week/child	12:00 p.m. - 4:00 p.m.
Before Care	\$ 20/week/child	\$ 20/week/child	7:00 a.m. - 9:00 a.m.
After Care	\$ 20/week/child	\$ 20/week/child	4:00 p.m. - 6:00 p.m.



Sparr-Tacular Summer Camp

Sparr Heights Community Center
1613 Glencoe Way, Glendale, CA 91208
For information, call (818) 548-2187

It's time for summer fun at Sparr Heights Community Center! Children will enjoy games, crafts, and weekly presentations from various City departments to learn about public safety, public transit, recycling and composting, and visits to and from our local branch library. Children must bring snacks, water, and a brown bag lunch Monday through Thursday. We will provide lunch each Friday with a Pizza Party. Lunch will include pizza, a snack, and a juice drink.

Dates: Monday - Friday, June 10 - August 16, 2024
Ages: 6 - 12 (Child must be 6 years old by June 10, 2024)

		<u>Weekly Theme</u>
Week 1:	June 10-14	TBD
Week 2:	June 17-21*	TBD
	<i>(no camp on Wednesday, June 19)</i>	
Week 3:	June 24-28	TBD
Week 4:	July 1-5*	TBD
	<i>(no camp on Thursday, July 4)</i>	
Week 5:	July 8-12	TBD
Week 6:	July 15-19	TBD
Week 7:	July 22-26	TBD
Week 8:	July 29-August 2	TBD
Week 9:	August 5-9	TBD
Week 10:	August 12-16	TBD

	<u>Glendale Resident Fee</u>	<u>Non-Resident Fee</u>	<u>Time</u>
	\$65/week/child	\$80/week/child	12:00 p.m. - 6:00 p.m.



See pages 16 -17 for important day camp information.

* Fees will be prorated for shorter weeks.

Summer Blast Camp

Brand Studios at Brand Park
1601 W. Mountain St., Glendale, CA 91201
For information, call (818) 548-2792

Camp activities include arts and crafts, sports, games, swimming, a weekly field trip every Tuesday, and movies at camp. Campers must provide their own lunch, drink, and snacks daily. Excursion locations may change. Please visit www.glendaleca.gov/daycamps for current information. Parents will need to pre-purchase meal cards or send a prepaid credit card with their child for cashless field trip locations. This will allow campers to purchase food on field trips where no outside food or cash is permitted by the location.

Dates: Monday - Friday, June 10 - August 16, 2024
Ages: 5 - 12 (Child must be 5 years old by June 10, 2024)

Tuesday Excursions

Week 1:	June 10-14	TBD
Week 2:	June 17-21*	TBD
	<i>(no camp on Wednesday, June 19)</i>	
Week 3:	June 24-28	TBD
Week 4:	July 1-5*	TBD
	<i>(no camp on Thursday, July 4)</i>	
Week 5:	July 8-12	TBD
Week 6:	July 15-19	TBD
Week 7:	July 22-26	TBD
Week 8:	July 29-August 2	TBD
Week 9:	August 5-9	TBD
Week 10:	August 12-16	TBD

	<u>Glendale</u> <u>Resident Fee</u>	<u>Non-Resident Fee</u>	<u>Time</u>
Full Day	\$120/week/child	\$135/week/child	9:00 a.m. - 4:00 p.m.
Before Care	\$ 20/week/child	\$ 20/week/child	7:00 a.m. - 9:00 a.m.
After Care	\$ 20/week/child	\$ 20/week/child	4:00 p.m. - 6:00 p.m.



Summer Spectacular Camp

Verdugo Park
1621 Canada Blvd., Glendale, CA 91208
For information, call (818) 548-2792

Camp activities include arts and crafts, sports, games, swimming, a weekly field trip every Wednesday, movies at camp, weekly theme activities, camper choice days and fun with friends. Campers must provide their own lunch, drink, and snacks daily. Excursion locations may change. Please visit www.glendaleca.gov/daycamps for current information. Parents will need to pre-purchase meal cards or send a prepaid credit card with their child for cashless field trip locations. This will allow campers to purchase food on field trips where no outside food or cash is permitted by the location.

Dates: Monday - Friday, June 10 - August 16, 2024
Ages: 6 - 14 (Child must be 6 years old by June 10, 2024)

Wednesday Excursions

Week 1:	June 10-14	TBD
Week 2:	June 17-21*	TBD
	<i>(no camp on Wednesday, June 19)</i>	
Week 3:	June 24-28	TBD
Week 4:	July 1-5*	TBD
	<i>(no camp on Thursday, July 4)</i>	
Week 5:	July 8-12	TBD
Week 6:	July 15-19	TBD
Week 7:	July 22-26	TBD
Week 8:	July 29-August 2	TBD
Week 9:	August 5-9	TBD
Week 10:	August 12-16	TBD

	<u>Glendale</u> <u>Resident Fee</u>	<u>Non-Resident Fee</u>	<u>Time</u>
Full Day	\$150/week/child	\$165/week/child	9:00 a.m. - 6:00 p.m.
Before Care	\$ 20/week/child	\$ 20/week/child	7:00 a.m. - 9:00 a.m.

* Fees will be prorated for shorter weeks.



See pages 16 - 17 for important day camp information.

Maximum Potential Basketball Summer Break Camp

Pacific Community Center
501 S. Pacific Ave., Glendale, CA 91204
For information, call (818) 548-4098

Hoopapalooza is designed to help improve an individual's strength, knowledge, and overall development of basketball. Join this camp TODAY and you will be able to fulfill your aspirations. Learn the basics and advanced movements of the game. We will also cover dribbling, passing, shooting, and agility. ALL SKILL LEVELS ARE WELCOME!!!!

Mark Herring of Hoopapalooza Inc. will be the instructor. Coach Herring is a native of North Carolina and has worked with the likes of Coach Kryzewski ("Coach K", Duke University's Men's Basketball Team, Retired), Kobe Bryant, Carmelo Anthony, Jason Tatum, and other NBA Stars. COME JOIN THE FUN!!!!

Dates: Monday - Friday, July 15-19, 2024
Ages: 5 - 9 (Child must be 5 years old by July 17, 2024, and must be able to perform all restroom functions independently.)

	<u>Number</u>	<u>Fee</u>	<u>Time</u>
Half Day	162430-06	\$150/week/child	9:00 a.m. - 1:00 p.m.
Before Care	162402-06	\$20/week/child	7:00 a.m. - 9:00 a.m.

Dates: Monday - Friday, July 22-26, 2024
Ages: 8 - 16 (Child must be 8 years old by June 12, 2023)

	<u>Number</u>	<u>Fee</u>	<u>Time</u>
Full Day	162430-07	\$225/week/child	9:00 a.m. - 4:00 p.m.
Before Care	162402-07	\$20/week/child	7:00 a.m. - 9:00 a.m.
After Care	162403-07	\$20/week/child	4:00 p.m. - 6:00 p.m.



Evolution Basketball Summer Camp

Verdugo Park (South End), on the Basketball Court
1621 Cañada Blvd., Glendale, CA 91208



Evolution Basketball teaches the fundamental movement skills and overall motor skills for basketball. The courses are designed to teach the fundamental concepts of basketball, dribbling and passing, shot techniques, spatial awareness, and teamwork. Levels are age-appropriate, and gradually increase children's ability to help them play the sport of basketball. A jersey is included for all participants.

Days: Monday - Friday
Time: 9:00 a.m. - 12:00 p.m.

FEE: \$169 (includes jersey)

	<u>Number</u>	<u>Level/Ages</u>
Week 1: June 24 - 28	140806-01	Level 2 (5-7 years)
	140806-02	Level 3 (8-12 years)
Week 2: July 8 - 12	140806-03	Level 2 (5-7 years)
	140806-04	Level 3 (8-12 years)
Week 3: July 15 - 19	140806-05	Level 2 (5-7 years)
	140806-06	Level 3 (8-12 years)

*Please visit [MyGlendaleParks.com](https://www.mylglendaleparks.com) for summer camp dates once available.

See pages 16 -17 for important day camp information.

Nature Camp - Summer

Stone Barn Nature Center at Deukmejian Wilderness Park
3429 Markridge Road, Glendale, CA 91214
For information, call (818) 937-7428



Campers will gain appreciation for the nature in their own backyards through exploration in the Stone Barn Nature Center and the rugged 700 acres Deukmejian Wilderness Park has to offer! Participants will experience hands-on activities such as interpretive hikes through the park, nature crafts, & might even see a wild animal or three! Please send your child in protective outdoor clothing, sturdy shoes, with a lunch, daily snacks, and a refillable water bottle.

Days: Monday - Friday

Ages: 6 - 12 (Child must be 6 years old by June 10, 2024)

Weekly Theme

Session 1: June 17-21*
(no camp on June 19)

Rock n' Roll and Minerals: Delve into the fascinating world of geology where it's all or nothing!

Session 2: June 24-28

Hocus Pocus with a Plant Focus: Plants are pokey, plants are bright, abracadabra! Explore the plants with delight!

Session 3: July 1-5*
(no camp on July 4)

Sherlock Biomes: How did birds learn to fly? Why do slugs leave a slime trail? Where did all these rocks come from?! Discover the mysteries happening right in our own backyards!

Session 4: July 8-12

System of a Sound: Investigate the sounds of our ecosystem & what they mean!

Session 5: July 15-19

Party Animals: Learn all about animals that stay up all night long & what secrets they're keeping!

Session 6: July 22-26

Wild-Crafters: Do you love arts & crafts? Create masterpieces using nature as your inspiration!

Glendale

Resident Fees

Non-Resident Fees

Times

Full Day
Before Care
After Care

\$275/week/child
\$ 20/week/child
\$ 20/week/child

\$290/week/child
\$ 20/week/child
\$ 20/week/child

9:00 a.m. - 4:00 p.m.
7:00 a.m. - 9:00 a.m.
4:00 p.m. - 6:00 p.m.

* Fees will be prorated for shorter weeks.

Pacific Skate School Specialty Skate Camp - Summer

Palmer Park
610 E. Palmer Avenue, Glendale, CA 91205

Join THE PACIFIC SKATE SCHOOL for summer camp this summer! We welcome your camper with Sk8 talk, stretches and warm-ups. Then we move on to some light skateboard drills before jumping in to some special activities and games. Followed by a halftime lunch (snacks not provided). Afterwards, we continue working on drills followed by more fun games and finally the wrap-up towards the end. Helmet, elbow pads, knee pads, and wrist guards are required to participate.

Ages: 6 - 11



Number

Dates

Fee

Time

132406-01
132406-02
132406-03

June 17-21, 2024
July 15-19, 2024
July 29-August 2, 2024

\$595/week/child
\$595/week/child
\$595/week/child

9:00 a.m. - 1:00 p.m.
9:00 a.m. - 1:00 p.m.
9:00 a.m. - 1:00 p.m.

See pages 16-17 for important day camp information.

Specialty Skate Camps - Summer

Verdugo Skate Park

1621 Cañada Blvd., Glendale, CA 91208

For information, call (818) 548-2786 or (818) 937-7440

Dates: Monday - Friday, July 22 - August 16, 2024

Ages: 6 - 15 (Child must be 6 years old by July 22, 2024)

Wednesday Excursions

Week 1: July 22-26	TBD
Week 2: July 29-August 2	TBD
Week 3: August 5-9	TBD
Week 4: August 12-16	TBD

"GROWS" SK8 CAMP (Beginning Level)

The camp includes skating instruction and activities held at the Verdugo Skate Park. In addition, skaters will go on a midweek excursion with the "Shredders" Traveling Sk8 Campers, and will go swimming at Pacific Community Pool one day. Participants must provide their own lunch and water daily (participants may NOT leave the camp site to get food in the area). Skaters must provide their own skateboard, helmet, and elbow and knee pads. Weekly excursions are held on Wednesday. Parents will need to pre-purchase meal cards or send a prepaid credit card with their child for cashless field trip locations. This will allow campers to purchase food on field trips where no outside food or cash is permitted by the location.

	<u>Fee</u>	<u>Time</u>
Full Day	\$225/week/child	9:00 a.m. - 4:00 p.m.
Before Care	\$ 20/week/child	7:00 a.m. - 9:00 a.m.
After Care	\$ 20/week/child	4:00 p.m. - 6:00 p.m.

"Shredders" Traveling SK8 Camp (Intermediate/Advanced Level)

The camp includes activities at the Verdugo Skate Park, a visit to at least 2 other skate parks per week, swimming, and a midweek excursion. Some of the parks that campers may visit include Montclair, Oxnard, and Duarte Skate Parks. Participants must provide their own lunch and water daily. Skaters must provide their own skateboard, helmet, and elbow and knee pads. No instruction is provided for campers, and they must be able to skate unassisted in various parks to enjoy this camp. Weekly excursions are held on Wednesday. Parents will need to pre-purchase meal cards or send a prepaid credit card with their child for cashless field trip locations. This will allow campers to purchase food on field trips where no outside food or cash is permitted by the location.

	<u>Fee</u>	<u>Time</u>
Full Day	\$325/week/child	9:00 a.m. - 4:00 p.m.
Before Care	\$ 20/week/child	7:00 a.m. - 9:00 a.m.
After Care	\$ 20/week/child	4:00 p.m. - 6:00 p.m.

Yoga & Arts Summer Camp

Joe Bridges Clubhouse at Glenoaks Park

2531 E. Glenoaks Blvd., Glendale, CA 91206

For information, call (818) 548-2184

Students will start the day with *Yoga in the Park*, then get-to-know-you games and activities. Various art projects including drawing, painting and clay will be explored and produced by students with their creativity highlighted in "Show and Tell" displays at the end of each day. Bring a yoga mat or large towel (labeled with name), water and lunch. Drop-off time will start at 8:30 a.m. **Material fee \$25 payable to instructor.**

Instructor: Ann Marie Smith

Days: Monday - Friday

Ages: 6 - 14 (Child must be 6 years old by June 10, 2024)

Dates: June 10-14, 2024 **Time:** 9:00 a.m. - 1:00 p.m. **Fee:** \$150/child

See pages 16 -17 for important day camp information.





YOUTH & FAMILY SERVICES PROGRAM

Pacific Community Center
501 S. Pacific Ave., Glendale, CA 91204
Hours: Monday - Friday, 9:00 a.m. - 6:00 p.m.

For more information, contact John Maghaguian
(818) 937-7247 | JMaghaguian@GlendaleCA.gov.

The Youth & Family Services Program is designed to provide free information and referral services to at-risk youth and their families. The program supports the family unit by providing guidance in decision-making and by connecting individuals to supportive services in the community.

Eligibility for Programs:

- ◆ Youth 13 - 17 years of age and young adults 18 - 21.
- ◆ No income or residency requirements.
- ◆ Self-referrals and referrals from local agencies are accepted.

Youth Case Management:

Information & referral, utility assistance, connecting individuals to community providers regarding a variety of social issues which include, but are not limited to: employment, community service, health & wellness, housing/unstable living situations, and legal matters.

Mentoring in Middle Schools:

Mentoring in Middle School is a collaboration between the Glendale Unified School District, the Youth & Family Services Section, and Homenetmen Ararat to provide mentoring to twenty middle school students at Wilson and Toll Middle Schools. Speakers from both the public and private sector provide both groups with insight on employment opportunities, responsibility, courtesy, and citizenship.



Follow us on Instagram @MyGlendaleTeens

Follow us on Instagram to find out the latest information on volunteer and job opportunities, special events, educational workshops, and places for teens to hang out!

You can also receive the latest updates on the City of Glendale by following @MyGlendaleTeens.

For more information, contact:
John Maghaguian
(818) 937-7247

JMaghaguian@GlendaleCA.gov

PLEASE NOTE:

Teen Night Out will NOT operate on the following dates: 3/22/24 and 5/24/24



YOUTH & FAMILY SERVICES PRESENTS:

TEEN NIGHT OUT

5:00 P.M. – 9:00 P.M.
For ages 13 -18

FREE SNACKS, REFRESHMENTS & PRIZES

HANG OUT WITH YOUTH & FAMILY SERVICES
AND ENJOY PING PONG, PS 4, POOL, AND KARAOKE.

LOCATION AND DATES

PACIFIC COMMUNITY CENTER
501 S. PACIFIC AVE.
GLENDALE, CA 91204

MARCH 1, 8, 15, 29, 2024
APRIL 5, 12, 19, 26, 2024
MAY 3, 10, 17, 31, 2024



To register or for more information, call or email Community Services Supervisor, John Maghaguian, at (818) 937-7247 or JMaghaguian@GlendaleCA.gov

Follow us @MyGlendaleTeens or #MyGlendaleTeens

Do You Want to Earn Community Service Hours for School and Become a Teen Volunteer?

1. Are you at least 14 years old?
2. Can you commit to 50 hours per year?
3. Do you have one of the following forms of identification?
 - ◆ California Driver License
 - ◆ California Identification Card
 - ◆ U.S. Passport
 - ◆ Military Identification Card
 - ◆ Green Card
4. Can you volunteer on weekends?

If you answered yes to all of these questions, please contact John Maghaguian at (818) 937-7247 or JMaghaguian@GlendaleCA.gov.





STUDENT TRAINING & EMPLOYMENT PROGRAM (STEP)

Are you between the ages of 16-21?

We have paid Jobs for students with disabilities!

Apply today!!

For more information call 818-937-8073

In partnership:



The Summer Training & Employment for Students is an Equal Opportunity Program. Auxiliary aids and services are available upon request to individuals with disabilities. TTY 818-548-3857

YOU CAN EARN UP TO \$2,000 ■ LEARN VALUABLE LIFE SKILLS

Eligibility Requirements:

- ☐ Must be a LA County Resident
- ☐ 16-21 years of age
- ☐ Have a documented disability
- ☐ Have the right to work in the U.S.
- ☐ Must have a work permit, if under 18

Program Design:

- ☐ 120 hours of paid work experience
- ☐ 20 hrs Work Readiness training
- ☐ Supported Services available based on individual needs

Apply today!



Youth Programs

Maple Park Recreation Club

The Maple Park Recreation Club is a free and fun drop-in program for children ages 8 to 17. Recreation Leaders provide general supervision and programming. Maple Park Community Center offers a recreation room with foosball, ping pong, and other gaming activities. There is a computer lab with internet and video games. There is also a full-court gymnasium which offers drop-in basketball for youth.

Location: Maple Park Community Center
820 E. Maple St., Glendale, CA 91205
Days: Monday through Friday
Time: 2:30 p.m. - 5:00 p.m.

A responsible adult/guardian must accompany all children under eight (8) years of age. This program is designed to provide supplemental activities for your child and not to provide childcare.

For more information, please call (818) 548-3694.

Therapeutic Recreation

Maple Park Community Center, 820 E. Maple St., Glendale, CA 91205
For program information, please call (818) 548-3783.

Maple Inclusive Play Day

Maple Inclusive Play Day (MIP Day) creates an opportunity for families with children of all abilities to come to the park, network with each other and allow their children to socialize, all centered around the new Shane's Inspiration all-inclusive playground. Crafts appropriate to all abilities will be available.

Day: Third Saturday of each month
Dates: March 16, 2024 | April 20, 2024 | May 18, 2024
Time: 11:00 a.m. - 1:00 p.m.

Get Fit

Get Fit is a free program designed to improve the health status of adults with Intellectual disabilities by focusing on nutrition, healthy meal planning, monthly weigh-ins and measurements, stretching and conditioning. Activities are age and skill appropriate.

Ages: 18 and older
Day: Mondays
Time: 5:00 p.m. - 6:00 p.m.

Club Maple

Club Maple is a free program open to adults with intellectual disabilities which provides an opportunity for individuals to experience positive, healthy, recreational, cultural, educational, and social experiences. Activities are age and skill appropriate.

Ages: 18 and older
Day: Thursdays
Time: 5:30 p.m. - 8:00 p.m.





VOLUNTEER WORKDAYS

For information or to RSVP, please click on the links below or visit GlendaleCA.gov/Trails.

RIVERWALK WORKDAYS

Glendale Narrows Riverwalk
Corner of Paula Avenue and Garden Street
Saturdays: March 9, 2024 | April 13, 2024 | May 11, 2024
8:00 a.m. - 11:00 a.m.

Spend the morning working next to the Los Angeles River on the City of Glendale's Riverwalk. We need volunteers to help us remove invasive plants from the landscaped areas along the L.A. River. Please wear sturdy shoes, protective clothing, and bring water. We'll provide the tools and gloves. Families, individuals, clubs and students needing community service hours are welcome. In case of rain, this event will be cancelled. Please RSVP by visiting GlendaleCA.gov/Trails.

WILDERNESS WORKDAYS

Deukmejian Wilderness Park
3429 Markridge Road., Glendale, CA 91214
Saturdays: March 16, 2024 | April 20, 2024 | May 18, 2024
8:00 a.m. - 11:00 a.m.

Help us water our bigcone spruce and coast live oaks, assist with trail repairs, and remove invasive plants from the park. Please wear sturdy shoes, protective clothing and bring water. Families, individuals, clubs and students needing community service hours are welcome. In case of rain, this event will be cancelled. Please RSVP by visiting GlendaleCA.gov/Trails

TRAIL SAFETY PATROL

Coming Soon!

Trail Safety Patrol Member Orientation
Brand Park/Studios
1601 West Mountain Street, Glendale, CA 91201

The Trail Safety Patrol (TSP) was launched in February 2013 with sixteen community volunteers operating in Hike and Mountain Bike units. The purpose of the TSP is to assist Community Services & Parks staff and other City professionals in protecting and maintaining the safety of park and open space visitors and resources; to educate park and open space visitors about resources, programs, and regulations; and to observe and report damage, unsafe conditions, and police, fire or medical emergencies. The program is a collaboration with the Glendale Police and Fire Departments.

We are actively seeking volunteers to help with the restoration program and Trail Safety Patrol.
For more information, email us at Trails@GlendaleCA.gov or call (818) 548-3795.

INTERPRETIVE HIKES AND PROGRAMS

For information or to RSVP, please click on the links below or visit GlendaleCA.gov/Trails.

Friday Night Lecture: "Gardening on the Wild Side"

Stone Barn Nature Center
Deukmejian Wilderness Park
3429 Markridge Road, Glendale, CA 91214
Friday, March 1, 2024
6:30 p.m. - 8:30 p.m.

Roger Klemm, California native plant expert, will take us on a journey all about our local native plants. He will discuss what makes them special, and how to include them in your yard. Please RSVP by visiting GlendaleCA.gov/Trails.

Interpretive Hike: "Insects & the Plants They Love"

Deukmejian Wilderness Park
3429 Markridge Road, Glendale, CA 91214
Saturday, March 2, 2024
9:00 a.m. – 11:00 a.m.

This hike will focus on the beneficial relationship between California native plants and insects. Roger Klemm, California native plant expert, will be our hike leader. Please RSVP by visiting GlendaleCA.gov/Trails.

Full Moon Night Hike

Deukmejian Wilderness Park
3429 Markridge Road, Glendale, CA 91214
Saturday, March 23, 2024
7:30 p.m. - 9:30 p.m.

Join us on a night hike as we learn about the phases of the moon and how lunar cycles affect wildlife, plants, insects and even humans! This is a family friendly hike on moderately steep trails. We will hike at a slow pace, stop for activities and discussion. Bring your flashlights, we will provide the red covers. Please RSVP by visiting GlendaleCA.gov/Trails.

Friday Night Lecture: "Get the Dirt on Dirt"

Stone Barn Nature Center
Deukmejian Wilderness Park
3429 Markridge Road, Glendale, CA 91214
Friday, April 19, 2024
6:30 p.m. - 8:30 p.m.

Topsoil is one of our most valuable natural resources! This lecture will cover the importance and history of soils, how it's formed, the different types of soil, the common characteristics of soil and how to best manage soil health. Dennis Gaudenti, Senior Park Services Manager, will be the speaker. Please RSVP by visiting GlendaleCA.gov/Trails.

All Trails & Open Space programs are sponsored by the
[Glendale Parks & Open Space Foundation](https://GlendaleParks.org).

To sign up for the Trails & Open Space Program newsletter, please visit GlendaleCA.gov/Trails.



STONE BARN NATURE CENTER

Deukmejian Wilderness Park
3429 Markridge Road, Glendale, CA 91214



HOURS OF OPERATION:

As of January 14, 2024

Fridays: 3:00 pm – 6:00 p.m.

Saturdays & Sundays: 9:00 a.m. – 5:30 p.m.

The Stone Barn Nature Center is free and open to the public! The Stone Barn was originally built between 1905-1915, by the Le Mesnager family. It was partially burned in the 1933 wildfire, but was rebuilt to the structure you see today. Throughout the years, it has served as a winery, horse stables, residence, and now a nature center. Visit the Stone Barn to learn about the local flora & fauna, the history of the land, and the winery that the Le Mesnager family operated.



Please find more information about enriching workshops, day camps, and field trips for local schools at GlendaleCA.gov/StoneBarn or call (818) 937-7428.

GLENDALE OUTDOORS! (GO!) COMMUNITY PROGRAM

Deukmejian Wilderness Park
3429 Markridge Road, Glendale, CA 91214
Saturdays: March 9, 2024 | April 13, 2024 | May 11, 2024
9:00 a.m. - 12:00 p.m.
FREE and open to all families



Spend some quality family time enjoying the great outdoors once a month! We invite the public to join us for an interpretive hike on a short trail, a nature craft, nature themed games, and a tour of the Stone Barn Nature Center. Water, snacks and free bus transportation from Pacific Park Community Center, leaving at 8:30 am and returning at 12:30 pm, are provided.

Important information:

- If you are riding the bus, please arrive by 8:15 AM to check in with staff.
- Free bus leaves from Pacific Community Center, 501 S. Pacific Ave., at 8:30 AM and returns at 12:30 PM
- Please wear sturdy shoes and protective clothing, and bring a reusable water bottle.
- Adult supervision is required! One adult for every three children 17 and under is required.
- For more information please call (818) 937-7428.

Each person planning to attend must RSVP, including children and adults, by visiting GlendaleCA.gov/Trails.

THE STONE BARN NATURE CENTER DOCENT PROGRAM

Deukmejian Wilderness Park
3429 Markridge Road,
Glendale, CA 91214

Do you have a passion for our native
Chaparral habitat and/or history of the land and people?
Please help us make an impact
by becoming a docent!

Docents will assist with general
interpretation on the weekends,
special events, visits, and programs.

If you'd like to apply, please call
(818) 937-7428.





Verdugo Park
1621 Cañada Blvd.
(south end)
(818) 548-2786



HOURS OF OPERATION:

March 2 - June 7, 2024

Monday – Friday: 3:00 p.m. - 9:00 p.m. (for all ages)
 Saturday: 10:00 a.m. - 12:00 p.m. (14 & under*)
 12:00 p.m. - 9:00 p.m. (for all ages)
 Sunday: 12:00 p.m. - 9:00 p.m. (for all ages)

**From 10:00 a.m.-12:00 p.m. on Saturdays, parents may skate with their children for instructional purposes. This is at the safety discretion of skate staff.*

FEES:

	Youth (17 & Under) & Resident Adults (18 & Over)	Non-Resident Adults (18 & Over)
Daily Entry	Free	\$ 4
Monthly Pass	N/A	\$40
Annual Pass	N/A	\$75

FEATURES:

15,000 square foot concrete facility: 6 - 9 foot Clover Bowl with 11 foot Over-Vert section, 6 - 10 foot Kidney Pool, Street Plaza with rails and ledges, and a Snake Run that empties into a 9 foot bowl with a Loveseat.

ALL PERSONS ENTERING THE PARK MUST WEAR A HELMET, KNEE PADS AND ELBOW PADS.

SKATE CLASSES

Registration for classes is per month. Classes held every Sunday.



Fees: February Classes \$249 / month
 March - May Classes: \$239 if registering before 2/20/24
 \$249 if registering on or after 2/21/24

Beginning Youth Class

Ages: 5+ **Day:** Sundays **Time:** 9:00 a.m. - 10:20 a.m.

Students will learn balance, using the skateboard for transportation, beginner tricks, safety, skate park etiquette. Helmet, elbow pads, knee pads, and wrist guards are required to participate.

Intermediate Youth Class

Ages: 5+ **Day:** Sundays **Time:** 10:30 a.m. - 11:50 a.m.

Students will learn more advanced tricks and learn about skateboard style. Helmet, elbow pads, knee pads, and wrist guards are required to participate.

Please check our website at MyGlendaleParks.com (keyword search "skate") for more information. You can register online as classes become available.

FRIDAY NIGHT LIGHTS

Enjoy skateboard videos, snacks, music and fun, including a chance to win prizes! Free admission for youth. Dates and times are subject to change.

Dates: March 15, 2024 **Time:** 5:30 p.m. - 8:00 p.m.

CITY OF GLENDALE'S

PACIFIC COMMUNITY POOL IS OPEN YEAR ROUND

JOIN US FOR RECREATION
& LAP SWIM, LESSONS,
TEAM SPORTS AND
PRIVATE RENTALS!

509 S. Pacific Ave.
Glendale, CA 91204

(818) 937-7433
GlendaleAquatics.com



Para información en español, llame a (818) 548-2000.

Հայերեն տեղեկությունների համար զանգահարել
հետևյալ հեռախոսահամարով (818) 548-2000.



@MyGlendaleParks

Parks
Make
Life
Better!

SPRING 2024 SESSION DATES

Enrollment begins: February 20, 2024

Classes begin: March 18, 2024

Last day to enroll for open classes: March 30, 2024

(Classes that do not meet the minimum number of students may be cancelled.)

See next page for Registration Information, or call (818) 548-2184.

CLASS LOCATIONS

Adult Recreation Center (ARC)

Central Park Complex
201 E. Colorado St.
Glendale, CA 91205

Brand Studios

1601 W. Mountain St.
Glendale, CA 91201

Chevy Chase Library

3301 E. Chevy Chase Dr.
Glendale, CA 91206

Crescenta Valley High School

2900 Community Ave.
La Crescenta, CA 91214

Deukmejian Wilderness Park

3429 Markridge Rd.
Glendale, CA 91214

Dunsmore Community Building & Park

4700 Dunsmore Ave.
La Crescenta, CA 91214

Glendale Community College

1500 N. Verdugo Rd.
Glendale, CA 91208

Glendale Sports Complex

2200 Fern Lane
Glendale, CA 91208

Glorietta Park

2801 N. Verdugo Rd.
Glendale, CA 91208

Griffith Manor Community Building

1551 Flower St.
Glendale, CA 91201

Hoover High School

651 Glenwood Rd.
Glendale, CA 91202

Joe Bridges Clubhouse

(In Glenoaks Park)
2531 E. Glenoaks Blvd.
Glendale, CA 91206

Maple Park Community Center

820 E. Maple
Glendale, CA 91205

Montrose Park

3529 Clifton Pl.
Glendale, CA 91208

Pacific Community Center & Pool

501 - 509 S. Pacific Ave.
Glendale, CA 91204

Scholl Canyon Golf & Tennis

3800 E. Glenoaks Blvd.
Glendale, CA 91206

Sparr Heights Community Center

1613 Glencoe Way
Glendale, CA 91208

Verdugo Skate Park

1621 Cañada Blvd.
(south end)
Glendale, CA 91208



MyGlendaleParks.com



Contact the Customer Service office at (818) 548-2184
Monday - Friday 8:30 a.m. - 5:00 p.m.

ONLINE REGISTRATION

Our online registration service allows you to register for activities through the internet **24 hours a day, 7 days a week**. Below you will find instructions that will help you establish a customer account, ID# and a password. Please read all the information online, especially sections regarding **residency and refunds**.

Step 1: Find our website: MyGlendaleParks.com.

Step 2: Log in with your credentials. If you have never logged in before, set up an online account. Be sure to add all of your family members. If you have forgotten your login credentials, please call (818) 548-2184 or email CSPCustomerService@GlendaleCA.gov.

Step 3: Browse activities. Click on Activity Search, and Search Activities.

Step 4: Select activities by clicking on the shopping cart icon.

Step 5: Pay for activities by clicking on shopping cart on the top right of your screen.

REGISTRATION REFUND POLICY

- Refunds are not available online.
- Contract classes or activities not reaching minimum numbers by the first week of classes may be cancelled and fees refunded. Service fees will not be refunded, in the event of class cancellation.
- Full refund, less an administrative fee, may be given if a refund is requested prior to start of programs/classes.
- Refunds requested after start of the program/class are contingent upon City approval and will only be considered through the conclusion of second week of scheduled class or second day of camp, and will be prorated.
- No refunds offered for Aquatics programs or classes.

For more information,
call (818) 548-2752 or (818) 548-2184.

REGISTRATION LOCATIONS:

Register for Classes & Camps at any one of the following locations:

Civic Auditorium

(In person, phone, and online registrations will be accepted.)

1401 North Verdugo Rd., Glendale, 91208
(818) 548-2752 or (818) 548-2184

MyGlendaleParks.com

Adult Recreation Center Central Park Complex

201 E. Colorado St., Glendale, CA 91205
(818) 548-3775

Glendale Sports Complex

2200 Fern Lane, Glendale, CA 91208
(818) 548-6420

Maple Park Community Center

820 E. Maple St., Glendale, CA 91205
(818) 548-3783

Pacific Community Center & Pool

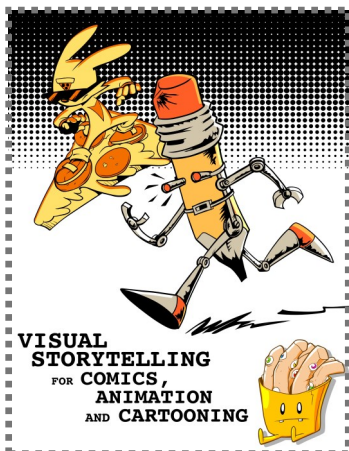
501-509 South Pacific Ave., Glendale, CA 91204
(818) 548-4098; (818) 937-7433

Sparr Heights Community Center

1613 Glencoe Way, Glendale, CA 91208
(818) 548-2187

Youth Classes

VISUAL STORYTELLING (NEW!)



In this class, students will learn how to make sequential art using tools and methods accessible to any skill level. With a seasoned animation industry vet as an instructor, whether you're a total novice with a pencil or a practiced illustrator, this class will teach you novel ways to use drawings to tell stories for comics or animation. By the end, students will walk away with a class anthology zine to show off their own short illustrated story!

\$35 material fee is payable on the first day of class.

10 WEEKS

Fee: \$95

Instructor: Michael Griffin

<u>Ages</u>	<u>Number</u>	<u>Location</u>	<u>Begins</u>	<u>Day</u>	<u>Time</u>
12+	430506-01	Brand Studios	3/20	W	3:00 p.m. - 5:00 p.m.

PARENT AND CHILD ART



Adult and child share creative time together using paint, paper, clay and found objects. Students will learn basic art techniques and vocabulary while painting, printmaking, clay making, creating collage and fantasy crafting. The instructor encourages freedom of expression and creativity. Classes also include games, songs, sharing books, story time, and show and tell. Class may be held outdoors.

\$10 material fee is payable on the first day of class.

8 WEEKS

Fee: \$85

Instructor: Aleka Corwin

<u>Ages</u>	<u>Number</u>	<u>Location</u>	<u>Begins</u>	<u>Day</u>	<u>Time</u>
2 - 5	430502-01	Brand Studios	3/21	Th	10:30 a.m. - 11:30 a.m.

DRAWING AND PAINTING CLASS FOR ALL LEVELS

Learn drawing and painting techniques while learning about the Masters. Covering still life, landscapes, portraits, animals and compositional design. Students will use a variety of art media including acrylic paint. Please dress for art and be ready to learn, practice and create!

\$20 materials fee is payable on the first day of class. No class on Friday, May 3 and Monday, May 20.

10 WEEKS

Fee: \$100

Instructor: Ann Marie Smith

<u>Ages</u>	<u>Number</u>	<u>Location</u>	<u>Begins</u>	<u>Day</u>	<u>Time</u>
6 - 14	430501-05	Brand Studios	3/18	M	5:30 p.m. - 6:45 p.m.
6 - 14	430501-04	Brand Studios	3/22	Fri	5:30 p.m. - 6:45 p.m.



Youth Sports

EVOLUTION BASKETBALL

Evolution Basketball teaches the fundamental movement skills and overall motor skills for basketball. The courses are designed to teach the fundamental concepts of basketball, dribbling and passing, shot techniques, spatial awareness, and teamwork. Levels are age-appropriate, and gradually increase children's ability to help them play the sport of basketball. A jersey is included for all participants.

LOCATION: Verdugo Park (South End), Basketball Court, 1621 Cañada Blvd., Glendale, CA 91208



5 WEEKS

FEE: \$105

DATES: Fridays, April 5 - May 3, 2024

<u>Number</u>	<u>Level/Ages</u>	<u>Times</u>
440805-01	Level 2 (5-7 years)	4:00 p.m. - 4:45 p.m.
440805-02	Level 3 (8-11 years)	4:45 p.m. - 5:30 p.m.
440805-03	Level 1 (4-5 years)	5:30 p.m. - 6:00 p.m.
440805-04	Level 2 (5-7 years)	6:05 p.m. - 6:50 p.m.

YOUTH TENNIS CLASSES

Fit Fun Tennis – TheTennisPlace.net



Fit Fun Tennis is a community tennis program hosted by The Tennis Place, Inc. Our qualified instructors focus on the fundamentals of tennis with an emphasis on FUN! All of our classes teach tennis-specific movements and proper

technique. You'll be challenged to improve at your own pace while getting a great workout and meeting other tennis players in the community.



6 WEEKS

FEE: 45-min class \$120; 1-hr class \$165

AGES: 5 - 18

LOCATONS: Montrose Park Tennis Court, 3529 Clifton Pl., Glendale, CA 91208
Nibley Park Tennis Court, 1103 E. Mountain St., Glendale, CA 91207

DATES: February 26 - April 13, 2024 and April 22 - June 8, 2024
(no class the week of March 18-23)

Please visit GlendaleCA.gov/TennisClasses for lesson times.



PACIFIC SKATE SCHOOL - INTRO TO SKATE (NEW!)

First time skaters are taught the fundamentals of skateboarding including stance, peddles, brakes, ramps, and turns. Coaches will use PSS Curriculum including color levels, ABC skate philosophy and skate dollars to ensure progression, safety and fun! Coaches lead group drills, individual instruction and every class will have a specialty activity, which includes Board Building, Skate Art, Parkour Obstacle and Skate Yoga. Helmet, elbow pads, knee pads, and wrist guards are required to participate. For more information, please visit PacifiSkateSchool.com.

LOCATION: Palmer Park - 610 E. Palmer Avenue, Glendale CA 91205

4 WEEKS

FEE: \$220

DAYS: Mondays

<u>Ages</u>	<u>Number</u>	<u>Times</u>	<u>Dates</u>
5 - 7	431306-01	3:30 p.m. - 5:00 p.m.	March 25 - April 15, 2024
5 - 7	431306-02	3:30 p.m. - 5:00 p.m.	April 29 - May 20, 2024

PACIFIC SKATE SCHOOL - BEGINNER SKATE (NEW!)

Participants will be taught the fundamentals of skateboarding including stance, peddles, brakes, ramps, turns, drop In, stall, and air. Coaches will use PSS Curriculum including color levels, ABC skate philosophy and skate dollars to ensure progression, safety and fun! Coaches lead group drills, individual instruction and every class will have a specialty activity, which includes Board Building, Skate Art, Parkour Obstacle and Skate Yoga. Helmet, elbow pads, knee pads, and wrist guards are required to participate. For more information, please visit PacifiSkateSchool.com.

LOCATION: Palmer Park - 610 E. Palmer Avenue, Glendale CA 91205

4 WEEKS

FEE: \$220

DAYS: Wednesdays

<u>Ages</u>	<u>Number</u>	<u>Times</u>	<u>Dates</u>
7-11	431307-01	3:30 p.m. - 5:00 p.m.	March 27 - April 17, 2024
7-11	431307-02	3:30 p.m. - 5:00 p.m.	May 1 - May 22, 2024



This instructional soccer experience includes age appropriate activities, skill demonstrations, fun games, and instructional scrimmages conducted in a non-competitive, recreational format. This class is perfect for first time players while being fun and engaging for kids with some experience. **Shin guards are required.**

Excessive Heat and Rainout Hotline #: (888) 372-5803. Call this number up to 30 minutes prior to any scheduled class to verify class status. If a class is cancelled due to weather and/or another City program, the class will be made up at the end of the session.

7 WEEKS FEE: \$143

All participants will receive a soccer jersey.

LOCATION: Glorietta Park, 2801 N. Verdugo Rd., Glendale, CA 91208

DAY/SESSION DATES: Saturdays, April 6 - May 18, 2024

Number	Class Title	Age	Time
441201-01	Mommy/Daddy/Me	2 - 3.5	9:00 a.m. – 9:30 a.m.
441202-02	Tot/Pre-Soccer	3.5 - 5	9:35 a.m. – 10:10 a.m.
441203-02	Soccer 1	5 - 6	10:15 a.m. – 11:00 a.m.
441204-01	Soccer 2	7 - 10	11:05 a.m. – 11:50 a.m.

BEGINNERS EDGE SPORTS TRAINING (BEST) CLASSES

For program information, call (818) 937-7440. To register, call (818) 548-2184.



BEST 4-Sport Multi-Sport

(Soccer, Baseball/Softball, Basketball, and Track & Field)

The 4-sport program brings you multiple weeks of 4 fantastic sports. We will teach your player how to kick and control a soccer ball, how to hit, catch, throw and run the bases, basketball handling, dribbling, passing and shooting, and track and field exercises. Our goal and focus is to maintain an energetic & highly active program that will teach, encourage and advance your young players, regardless of their skill level. Please bring an age-appropriate soccer ball for the first week. A hitting tee is needed later in the camp, as well as your own basketball. All other equipment will be provided.

Baseball Class - We will teach your child how to hit, catch, throw, and run bases and other baseball skills.

Basketball Class - We will teach your child how to dribble, pass, shoot, ball handling, and other basketball skills.

Soccer Class - We will teach your child how to dribble, pass, and other ball-handling skills, and learn the sport of soccer. All levels welcome.

6 WEEKS FEE: \$105

LOCATION: Verdugo Park (South End), Next to the Basketball Court
1621 Cañada Blvd., Glendale, CA 91208

Winter Session 3: Saturdays, February 24 - April 6, 2024

4-Sport Multi Classes

Section	Ages	Times
340801-06	4 - 7	9:20 a.m. – 10:05 a.m.
340801-07	2 - 4	10:10 a.m. – 10:55 a.m.
340801-08	7 - 10	11:50 a.m. – 12:35 p.m.

Baseball Classes

Section	Ages	Times
340802-03	2 - 4	8:30 a.m. – 9:15 a.m.
340802-04	3 - 6	11:00 a.m. – 11:45 a.m.

Winter Session 4: Sundays, February 25 - April 7, 2024

4-Sport Multi Classes

Section	Ages	Times
340801-09	4 - 7	9:20 a.m. – 10:05 a.m.
340801-10	2 - 4	10:10 a.m. – 10:55 a.m.

Basketball Classes

Section	Ages	Times
340803-03	3 - 6	8:30 a.m. – 9:15 a.m.
340803-04	7 - 10	11:00 a.m. – 11:45 a.m.

Spring Session 1: Saturdays, April 20 - June 1, 2024

4-Sport Multi Classes

Section	Ages	Times
440801-01	4 - 7	9:20 a.m. – 10:05 a.m.
440801-02	2 - 4	10:10 a.m. – 10:55 a.m.
440801-03	7 - 10	11:50 a.m. – 12:35 p.m.

Soccer Classes

Section	Ages	Times
440804-01	2 - 4	8:30 a.m. – 9:15 a.m.
440804-02	3 - 6	11:00 a.m. – 11:45 a.m.

Spring Session 2: Sundays, April 21 - June 2, 2024

4-Sport Multi Classes

Section	Ages	Times
440801-04	4 - 7	9:20 a.m. – 10:05 a.m.
440801-05	2 - 4	10:10 a.m. – 10:55 a.m.

Basketball Classes

Section	Ages	Times
440803-01	3 - 6	8:30 a.m. – 9:15 a.m.
440803-02	7 - 10	11:00 a.m. – 11:45 a.m.

Adult Fitness/Wellness & Dance

AIKIDO



Aikido is a peaceful, yet powerful Japanese martial art. This class is designed to teach students how to use an opponent's energy to gain control of a situation using beautiful and circular techniques. Great emphasis is placed on motion and the dynamics of movement.

10 Weeks

Fee: \$120

Instructor: Mark Adachi

<u>Number</u>	<u>Location</u>	<u>Begins</u>	<u>Day</u>	<u>Time</u>
460401-01	Pacific CC	4/8	M, Th Sat	7:00 p.m. - 8:30 p.m. 10:00 a.m. - 11:30 a.m.

YOGA WITH KNEKOH FRUGE, C-IAYT, E-RYT & YOGA CIRCLE DOWNTOWN



Postures (Asanas) stretch, tone and strengthen the entire skeletal system, working not only the body's frame, but the internal organs, glands and nerves as well. These postures are linked via a connective movement (Vinyasa) and powerful breath work. These breathing exercises (pranayama) refresh and cleanse the body and help to control the mind. The union (yoga) of these two forces (Asana and Pranayama), release physical and mental tension, liberating vast resources of energy with increased mental power, clarity and concentration. This practice, over time, will bring your being into peak physical and mental condition.

10 Weeks

Fee: \$175

Instructor: Kneko Fruge

<u>Number</u>	<u>Location</u>	<u>Begins</u>	<u>Day</u>	<u>Time</u>
430303-01	Chevy Chase Library	3/30	Sat	9:00 a.m. - 10:00 a.m.

Adult Visual Arts

WATERCOLOR FRESH AND LOOSE



In this class, painters will explore breaking free of careful, timid techniques to create stronger, more effective visual statements. The emphasis will be toward fostering individual progress and developing each artist's unique voice. Participants of every skill or experience level are welcome. **No class on Friday, May 3, 2024.**

10 Weeks

Fee: \$90

Instructor: John Byram

<u>Number</u>	<u>Location</u>	<u>Begins</u>	<u>Day</u>	<u>Time</u>
430102-01	Brand Studios	3/29	F	9:00 a.m. - 12:00 p.m.
430102-02	Brand Studios	3/29	F	1:00 p.m. - 4:00 p.m.

MIXED MEDIA (Open Studio)

This open studio class will allow participants to develop new visions and explore new methods by using water mediums such as gesso ink, acrylic, and pastels. There is no instructor for this class, and students can share experience and tips with each other.

10 Weeks

Fee: \$85

No Instructor

<u>Number</u>	<u>Location</u>	<u>Begins</u>	<u>Day</u>	<u>Time</u>
430103-01	Brand Studios	4/1	M	10:00 a.m. - 1:00 p.m.

Adult Sports

For program information, call (818) 937-7440.
To register, call (818) 548-2184.

ADULT TENNIS CLASSES



Fit Fun Tennis – TheTennisPlace.net

Fit Fun Tennis is a community tennis program hosted by The Tennis Place, Inc. Our qualified instructors focus on the fundamentals of tennis with an emphasis on Fun! All of our classes teach tennis specific movements and proper technique. You'll be challenged to improve at your own pace while getting a great workout and meeting other tennis players in the community.

6 WEEKS

FEE: 1-hr class \$165; 1.5-hr class \$210
AGES: 18+
LOCATON: Montrose Park Tennis Court, 3529 Clifton Pl. Glendale, CA 91208
DATES: February 26 - April 13, 2024 and April 22 - June 8, 2024

Please visit GlendaleCA.gov/TennisClasses for lesson times.

Activity Card Fee Schedule:

Senior Activity Cards (60 years of age and older)	\$10/year
Adult Activity Cards (18 - 59 years old)	\$25/year

Cards may be purchased at one of the following locations:

- **Adult Recreation Center**, 201 E. Colorado St., Glendale, CA 91204
- **Glendale Sports Complex**, 2200 Fern Lane, Glendale, CA 91208
- **Maple Park Community Center**, 820 E. Maple St., Glendale, CA 91205
- **Pacific Community Center**, 501 S. Pacific Ave., Glendale, CA 91204
- **Sparr Heights Community Center**, 1613 Glencoe Way, Glendale, CA 91208

ADULT OPEN PLAY BADMINTON

Join a sport that gives you a great aerobic workout! All skill levels are invited to participate!

Location: **Pacific Community Center Gym**
501 S. Pacific Ave., Glendale, CA 91204

Fee: Free for Activity Card Holders (see fee schedule above)
\$2 for Non-Activity Card Holders

Days/Times: Fridays, 6:00 p.m. - 10:00 p.m.
Call the facility to check for closures: (818) 548-4098, or visit GlendaleCA.gov/PacificCourts.



ADULT DROP-IN BASKETBALL

Open play basketball is available to adults of all skill levels in our gyms at Maple Park Community Center and Pacific Community Center. All skill levels are welcome to drop-in for a good workout by playing pickup games. **Ask for the drop-in calendar from the front desk to know when drop-in goes dark due to facility reservations and special events. Drop-in calendar is subject to change without notice. Please contact the Community Center for an up-to-date schedule, or visit GlendaleCA.gov/PacificCourts.**

Fee: Free for Activity Card Holders (see fee schedule above)
\$2 for Non-Activity Card Holders

Location: **Maple Park Community Center**
820 E. Maple St. Glendale, CA 91205

Days/Times: Monday through Friday 4:00 p.m. - 5:00 p.m.
Saturday 9:00 a.m. - 5:00 p.m.

Location: **Pacific Community Center**
501 S. Pacific Ave. Glendale, CA 91204

Days/Times: Monday and Thursday 5:00 p.m. - 8:00 p.m.
Saturday 12:30 p.m. - 4:00 p.m.





ADULT OPEN PLAY VOLLEYBALL

LOCATION #1: **Maple Park Community Center***
820 E. Maple St., Glendale, CA 91205

Fee: Free for Activity Card Holders (see fee schedule on previous page)
\$2 for Non-Activity Card Holders

Days/Times: Tuesdays, 6:00 p.m. - 9:00 p.m.
(Ask for the drop-in calendar at the front desk to know when drop-in goes dark due to private reservations or special event.)

LOCATION #2: **Hoover High School (East Gym)***
651 Glendwood Rd., Glendale, CA 91202

Fee: No daily fee. Activity Card is required (see fee schedule on previous page.)

Days/Times: Mondays and Thursdays, 8:00 p.m. - 10:00 p.m.

Dates: September 11, 2023 - June 6, 2024
(Closed: 2/12/24, 2/15/24, 2/19/24, 3/18/24, 3/21/24, 5/27/24)
Dates are subject to Hoover High School availability.

*Release of liability form is due each calendar year. Maximum 42 person capacity per night. Teams will be established in groups of 6 based on the sign-in sheet.

MASTERS OPEN PLAY SOCCER (Ages 40+)

Get a healthy workout and meet new friends as you join other adult enthusiasts for casual pick-up games. This is a non-competitive, friendly play program. Pick-up games are available on Wednesday and Friday mornings.

Fee: Activity Card holders only. \$2 per player per day
(see fee schedule on the previous page)

Days/Time: Wednesdays and Fridays, 7:30 a.m. - 9:30 a.m.

Location: Glendale Sports Complex
2200 Fern Lane, Glendale, CA 91208

MASTERS OPEN PLAY SOCCER (Ages 60+)

The City offers causal pick-up soccer for adults over age 60 in both a walking and running format. Walking soccer is designed to get seniors on the field to stay physically active, but without the intensity of a regular game. The programs will be offered at different times to allow for safe and enjoyable games for both intensities.

Fee: Activity Card holders only. \$2 per player per day
(see fee schedule on the previous page)

Day/Time:	Tuesdays and Thursdays,	Walking Soccer	10:00 a.m. - 11:00 a.m.
		Masters Soccer	11:00 a.m. - 1:00 p.m.

Location: Glendale Sports Complex
2200 Fern Lane, Glendale, CA 91208





SENIOR CLASSES

Sponsored by Glendale Community College

The City of Glendale, in partnership with Glendale Community College, is sponsoring several classes for seniors, ages 60+, FREE of charge.
For information or class registration, please call (818) 243-5196.

Please visit Garfield.Glendale.edu for a listing of all credit/no credit classes available through Glendale Community College Garfield Campus.

Next session begins February 20, 2024.



Senior Classes & Activities

ALL CLASSES ARE ONGOING, YOU MAY REGISTER AT ANY TIME.

The classes listed below will be offered in-person AND online. You are welcome to join us in either format.

If you wish to participate online via Zoom, us Meeting ID: 894 7893 4835 | Passcode: PMLB2022.

Locations:

Adult Recreation Center, 201 E. Colorado St., Glendale, CA 91205

Sparr Heights Community Center, 1613 Glencoe Way, Glendale, CA 91208

Pacific Community Center, 501 S. Pacific Ave., Glendale, CA 91204

Fee Schedule: **\$1 per class, payable at the beginning of each class. Activity card holders only. (Card must be presented upon payment.)**

Activity Card Fee:

Senior Activity Cards (60 years of age and older)	\$10/year
Adult Activity Cards (18 - 59 years old)	\$25/year
Single-Day Pass	\$2/day

If you have questions, please call (818) 548-3775.

Day	Class	Time	Location
Mondays	Aerobics	8:00 a.m. - 9:00 a.m.	ARC
	Slow Stretch	9:00 a.m. - 10:00 a.m.	ARC
	Absolute Beginner Line Dancing	11:15 a.m. - 12:15 p.m.	Pacific CC
	Beginner/Improver Line Dancing *	12:30 p.m. - 2:30 p.m.	Pacific CC
Tuesdays	Muscle Toning	8:00 a.m. - 9:00 a.m.	Sparr Heights CC
	Aerobics	9:00 a.m. - 10:00 a.m.	Sparr Heights CC
Wednesdays	Zumba	9:00 a.m. - 10:00 a.m.	ARC
Thursdays	Aerobics	8:00 a.m. - 9:00 a.m.	Sparr Heights CC
	Slow Stretch	9:00 a.m. - 10:00 a.m.	Sparr Heights CC
Fridays	Muscle Toning	8:00 a.m. - 9:00 a.m.	ARC
	Zumba	9:00 a.m. - 10:00 a.m.	ARC

* Activity Card Holders \$2 per class, payable at the beginning of each class.
Non-Activity Card Holders \$4 per class, payable at the beginning of each class.

ADULT RECREATION CENTER

201 E. Colorado St., Glendale, CA 91205

For more information, call (818) 548-3775.

AVAILABLE TO ACTIVITY CARD HOLDERS ONLY.

EXERCISE ROOM

The Adult Recreation Center offers a wide selection of fitness equipment including treadmills, cross-trainers, and stationary bikes along with numerous multifunction machines. Proper workout clothes and a towel are required.



An additional ARC Gym Membership is required.

Fee Schedule:

Senior Activity Cards (60 years of age and older)

\$10/year

Adult Activity Cards (18 - 59 years old)

\$25/year

Senior ARC Gym Membership

\$50/year plus an Activity Card

Adult ARC Gym Membership

\$80/year plus an Activity Card

Exercise Room Hours

Monday - Thursday

8:00 a.m. - 7:30 p.m.

Fridays & Saturdays

8:00 a.m. - 4:30 p.m.

Sundays

Closed

SENIOR MIXER

If you like to salsa, cha-cha, rumba, waltz or boogie, this is the place to be. The senior mixer is a great opportunity to socialize with fellow seniors in the greater community of Glendale, make new acquaintances and enjoy a good time. Please call the Adult Recreation Center for a list of specific activities that take place during the mixer.

Location: Adult Recreation Center, Dining Hall

Days/Time: Thursdays, 3:00 p.m. - 6:00 p.m.



Fee: Participants must have a valid/current activity card on file. A single day pass may be purchased for \$2.00 per person.

* A suggested donation of \$3.00 is collected at the entrance to the mixer. This is a gratuity that is given to the DJ at the end of each event.

ADULT RECREATION CENTER

ALL OF THE FOLLOWING ACTIVITIES ARE AVAILABLE TO ACTIVITY CARD HOLDERS ONLY.
For more information, please call (818) 548-3775.

ARC BRIDGE CLUB



Millions of people play bridge worldwide. Bridge is a trick-taking game using a standard deck played by four players.

Days/Time: Mondays 1:30 p.m. - 4:00 p.m.
Thursdays 11:30 a.m. - 4:30 p.m.
Location: Multi-Purpose Room B

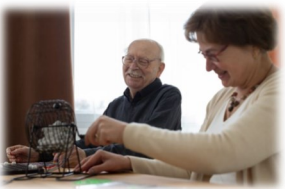
DROP-IN BILLIARDS, BACKGAMMON, CHESS, AND DOMINOS



You can drop in Monday through Saturday to play some billiards, backgammon, chess or dominos. **Hours may change based on room availability.**

Days/Time: Mondays – Thursdays 8:00 a.m. - 7:30 p.m.
Fridays and Saturdays 8:00 a.m. - 4:30 p.m.
Location: Multi-Purpose Room A

BINGO



Make new friends while playing this timeless classic.

Activity Card Holders: \$1 for 2 cards;
Non Activity Card Holders: \$2 for 2 cards.

Days/Time: Fridays 10:00 a.m. - 11:00 a.m.
Location: Multi-Purpose Room B

KNIT & CHAT



Bring your yarn and needles to knit and chat with your friends about various topics. Show off your skills, and teach each other new methods!

Days/Time: Tuesdays & Fridays 9:00 a.m. - 11:00 a.m.
Location: TV Lounge

KARAOKE



Make new friends as you sing along to today's chart-topping pop hits or classic hits of all time.

Days/Time: Tuesdays 1:00 p.m. - 4:00 p.m.
Location: Multi-Purpose Room B

PACIFIC COMMUNITY CENTER

501 S. Pacific Ave, Glendale 91204
For more information, call (818) 548-4098.

Activity Card Fee:

Senior Activity Cards (60 years of age and older)	\$10/year
Adult Activity Cards (18 - 59 years old)	\$25/year
Single Day Pass	\$ 2/day

DROP-IN BILLIARDS

You can drop in Monday through Saturday to play some billiards. **Hours may change based on room availability.**

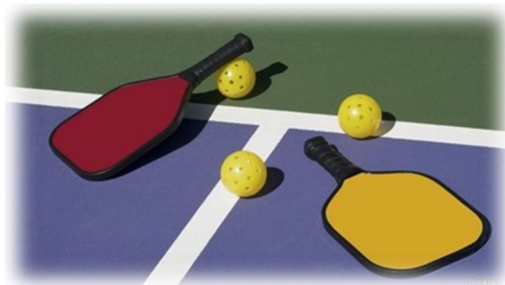
Days/Time: Mondays – Thursdays, 9:00 a.m. - 8:30 p.m.
Fridays & Saturdays, 9:00 a.m. - 4:30 p.m.

Location: Recreation Room

PICKLEBALL

Come out and try this fun sport, make some friends and see what everyone is talking about.

- ◇ All Levels and Ages Welcome
- ◇ Coaching Available for Beginners
- ◇ Paddles Available



5 Outdoor Courts

Mondays, Tuesdays, Thursdays and Fridays:
9:00 a.m. - 2:00 p.m.

Wednesdays: 9:00 a.m. - 1:00 p.m.

Saturdays: 9:00 a.m. - 3:00 p.m.

4 Indoor Courts

Tuesdays: 5:00 p.m. - 8:00 p.m.

Please visit GlendaleCA.gov/PacificCourts for current schedule and closure dates.

OPEN PLAY TABLE TENNIS

No matter what your skill level or how long it has been since you held a paddle, the time has come to play some ping pong. Make new friends and get a work out while having fun.

Please visit GlendaleCA.gov/PacificCourts for current schedule and closure dates.

Fee: See Activity Card Fee schedule above.

SPARR HEIGHTS COMMUNITY CENTER

1613 Glencoe Way, Glendale, CA 91208
For more information, call (818) 548-2187.

ALL OF THE FOLLOWING ACTIVITIES ARE AVAILABLE TO ACTIVITY CARD HOLDERS ONLY.

BRIDGE

Senior bridge players of all skill levels and experience can come to the center and participate in competitive bridge games.

Day/Time: Tuesdays and Wednesdays 9:00 a.m. - 11:30 a.m.

BINGO

If you were born to yell, "BINGO!", come out and enjoy an exciting game of senior bingo for prizes and socialization.

Activity Card Holders: \$1 for 2 cards; Non Activity Card Holders: \$2 for 2 cards.

Day/Time: Wednesdays 12:30 p.m. - 2:00 p.m.

WOODCARVING CLASS

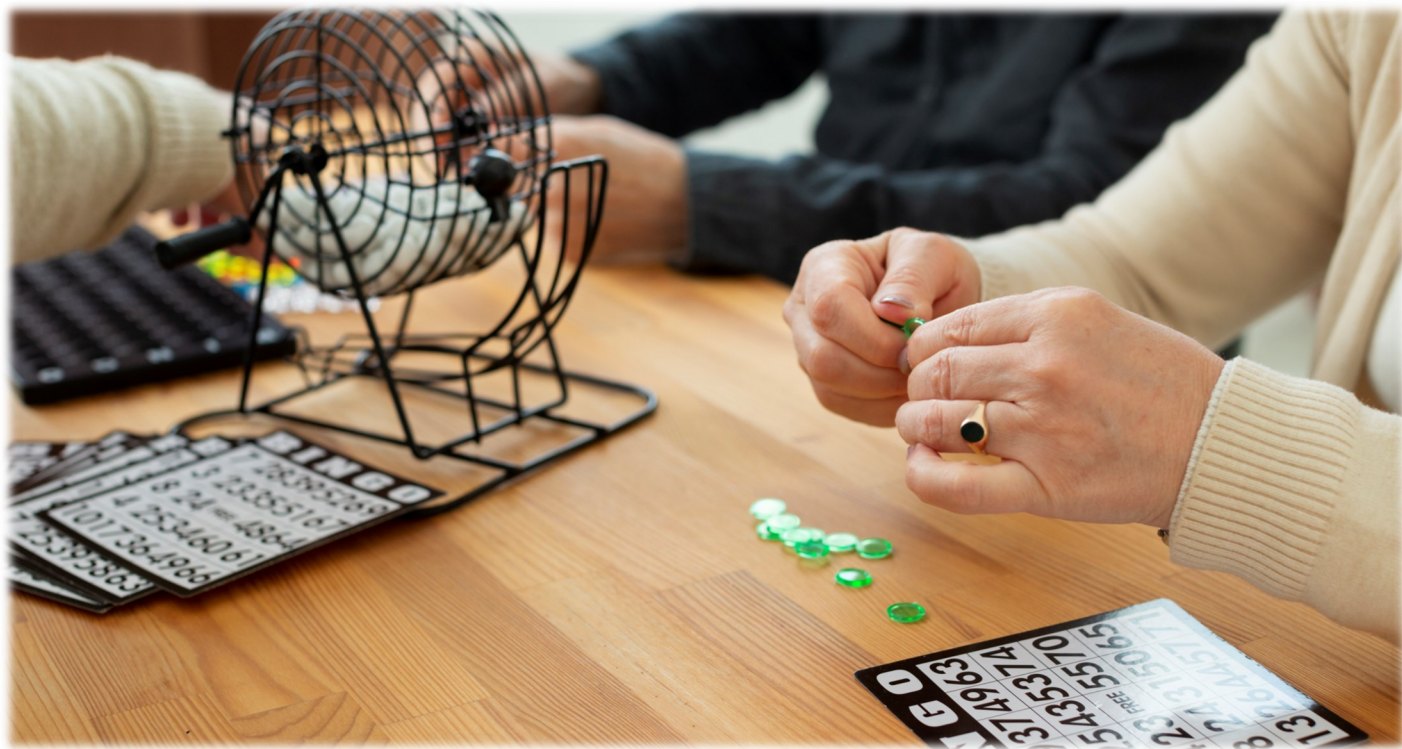
Bring your favorite tools, create a work of art, and enjoy the companionship of like-minded folks.

Day/Time: Fridays 10:00 a.m. - 12:00 p.m.

KNITTING AND NEEDLEWORK

Knitters of all skill levels are invited to bring their yarn and needles and work on projects with others who share the same interest.

Day/Time: Mondays 1:00 p.m. - 3:00 p.m.



Elderly Nutrition Program



Enjoy congregate meal dining with us!

Ages 60+ are welcome.

Contact (818) 548-3778 to make your **required** reservation.

Adult Recreation Center

201 E. Colorado St.
Glendale, CA 91205
11:30 AM – 12:30 PM
Lunch Served:
Monday-Sunday

Sparr Heights Community Center

1613 Glencoe Way.
Glendale, CA 91208
11:30 AM – 12:30 PM
Lunch Served:
Monday-Friday

Pacific Community Center

501 S. Pacific Ave.
Glendale, CA 91204
12:00 PM - 1:00 PM
Lunch Served:
Monday, Wednesday, Friday



Community Services
& Parks



GlendaleCA.gov/Parks @MyGlendaleParks #MyGlendaleParks

*Starting July 1, 2023, all new and returning clients must fill out a 2023-2024 Universal Intake Form before receiving meals.

CASE MANAGEMENT

The Case Management program for seniors is designed to meet the special needs of frail individuals who are experiencing difficulty in maintaining independent living arrangements.

For Information & Referral Services, please call: (818) 548-3772
Spanish Language Case Manager: (818) 548-2801

Transportation Services and Bus Pass Sales:

Transportation services include Dial-A-Ride, by reservation, and MTA bus passes, sold at the Adult Recreation Center, Sparr Heights Community Center and Pacific Community Center all month long.

The Metro bus pass for seniors is not honored by the Beeline.

For more information about the Access Paratransit Program for disabled seniors, call (818) 548-3775 or (818) 548-2187.

Health Insurance Counseling and Advocacy Program (HICAP):

The state-registered Health Insurance Counseling and Advocacy Program (HICAP) Volunteer Counselors provide unbiased information, counseling and assistance on Medicare and related health care coverage, including:

- ◆ Original Medicare (Parts A & B)
- ◆ Medicare Prevention Services
- ◆ Medicare Part D (Prescription Drug Benefit)
- ◆ "Extra Help" with Medicare Part D
- ◆ Medicare Advantage: HMO'S & PPO
- ◆ Medicare Supplement (Medigap) Insurance
- ◆ Medi-Cal & Medicare Savings Programs
- ◆ Long-Term Care

Contact the Adult Recreation Center at (818) 548-3775 for more information.

Legal Aid - Provided by the Armenian Bar Association:

Assistance with legal questions and legal documents.

Office Hours: Saturdays 10:00 a.m. - 12:00 p.m. By Appointment ONLY

To make an appointment, please call (818) 937-3151 or email ProBono@ArmenianBar.org.





FILMING IN PARKS & COMMUNITY BUILDINGS

Film Permits Process

Looking for a great place to host your next filming project? The City of Glendale Community Services & Parks Department welcomes filming in parks and community buildings! Our parks and locations can accommodate: Feature Films, Commercials, Music Videos, Public Service Announcements, Still Photos Shoots, Reality TV Series, Documentaries, Director's Reels, Student Films.

Film Permits Include:

- Reserved site
- Professional Site Host onsite to ensure film crew has access to reserved site
- Well-maintained locations that are clean and ready for set dressing if applicable

Previous Film Projects Include:

- Criminal Minds TV Series
- "Moneyball"
- "Downsizing"
- Glad Commercials
- Bones TV Series
- Music Videos
- Various other projects

Requesting a Film Permit

Contact Matt Acosta: (818) 937-7426 or macosta@glendaleca.gov

1. Complete a Parks Film Permit Application, and verify park/facility availability with Matt Acosta. The application can be downloaded at www.glendaleca.gov/parksfilming.
2. Once your Parks site is approved, submit a FilmLA application at <http://my.filmla.com>.
3. A site meeting may be scheduled in conjunction with the Application.
4. Make payment in full to City of Glendale, and receive your Parks Film Permit.
5. Make payment in full to FilmLA, and receive your FilmLA Permit.

TOURS OF HISTORIC FACILITIES

FOR RESERVATIONS, PLEASE CALL
COMMUNITY SERVICES & PARKS AT (818) 548-2184
FOR TOUR INFORMATION, PLEASE CALL THE DOCENTS
AT THE VARIOUS SITES



"Shoseian" Whispering Pine Teahouse & Friendship Garden

Inside Brand Park
1601 West Mountain Street, Glendale, CA 91201
(310) 849-5432

HOURS OF OPERATION

Friendship Garden: Mon - Thur, 10:00 a.m. - 3:00 p.m.
Teahouse Events/Programs: Third Sunday of the month.
Go to GlendaleTeahouse.org for event details.

Docent: Friends of Shoseian

FACILITY DESCRIPTION

- The traditional teahouse was built in 1974 through the combined efforts of the Sister Cities of Glendale and Higashi-Osaka, Japan. It is one of the few traditional Japanese Teahouses open to the public in the United States.
- The Teahouse, which was designed by architect Hayahiko Takase, is a unique blending of western and eastern design and an apt expression of the spirit of cross-cultural community.
- Nestled at the foot of the Verdugo Mountains beside a koi pond in a charming Japanese-style garden setting, the Teahouse is in a unique position to outreach to the Community of Glendale and greater Los Angeles.

HISTORY

- The Teahouse represents the spirit of goodwill, lasting peace and friendship between the people of Japan and the United States.
- Given the name "Shoseian" or "Whispering Pine Teahouse" by Genshitsu Sen, the Fifteenth Grand Tea Master of the Urasenke School of Tea in Japan, the Teahouse is designated an official Tearoom. Dr. Yamazaki of Higashi-Osaka provided initial support for the Teahouse and Gardens.
- Through recent cooperative efforts by the City of Glendale and Friends of Shoseian, the Teahouse was refurbished and designated as Glendale Register of Historic Resources #46.



Doctors House Museum & Gazebo

Inside Brand Park
1601 West Mountain Street, Glendale, CA 91201
(818) 242-7447

HOURS OF OPERATION

Guided Tours: Sundays 2:00 p.m. - 4:00 p.m.
No tours on holidays, and during inclement weather.
Go to GlendaleHistorical.org/Museum-Tours for more details on upcoming events.

Suggested Donation: \$10

Docent: The Glendale Historical Society

FACILITY DESCRIPTION

- The Doctors House Museum is an authentically restored Queen Anne-Eastlake style home built around 1888.
- The Doctors House lawn area and gazebo are available for reservation for weddings and other special events.
- Smoking, barbecues, and amplified sound are NOT permitted because of the historic nature of the facility.

HISTORY

- The two-story house originally stood at 921 East Wilson Avenue in central Glendale, but was moved to its present location in 1980.
- Four early doctors owned it in succession, giving the house its name. It was later occupied by silent screen icon Nell Shipman and her family in the early 1900s.
- Threatened with demolition in 1979, community activists organized to save it and formally incorporated The Glendale Historical Society on October 24, 1979.
- The Glendale Historical Society dedicated the Doctors House to the City of Glendale on September 12, 1982, after spending thousands of volunteer hours on restoration.
- The Doctors House is registered as Glendale Register of Historic Resources #6.



Casa Adobe de San Rafael & Park

1330 Dorothy Drive, Glendale, CA 91202
glendalebeautiful@gmail.com
(818) 396-6840; GlendaleBeautiful.org

HOURS OF OPERATION

Daily 8:00 a.m. – Dusk

Guided Tours:

First Sunday of the Month, 1:00 p.m. - 3:00 p.m.

Suggested Donation: \$2

Docent: Glendale Beautiful

FACILITY DESCRIPTION

- The park is 1.6 acres in size.
- Amenities include a picnic pavilion which is available for small company or family picnics or gatherings, a turf area that is available for larger festival-type events, gas grill, sink, electrical outlets, and public restroom facilities.
- Smoking, barbecues, and amplified sound are NOT permitted because of the historic nature of the facility

HISTORY

- Casa Adobe de San Rafael is registered as California Landmark #235 and Glendale Register of Historic Resources #3.
- The Casa was built around 1870 by Tomas Sanchez, former sheriff of Los Angeles County, using adobe blocks to form the walls, which were then covered with stucco.
- In 1875, the property was sold, left abandoned, and fell into a ruinous state.
- In 1930 the Casa was purchased by the California Medicinal Wine Company who planned to tear down the structure and remove the large eucalyptus trees on the property. Local neighbors and community members stopped the demolition and began a campaign to preserve the house as a historic landmark.
- The City of Glendale purchased the adobe in 1930 and by 1932 La Casa de Adobe de San Rafael was completely refurbished.
- Today, the adobe includes a Monterey-style corridor (covered porch), beautiful sunken garden, brick patio, sandy brown tile roof, and long narrow front windows adorned with teal shutters. Interior furnishings are from the 19th century.



Catalina Verdugo Adobe

2211 Bonita Drive, Glendale, CA 91208
(818) 244-2841

HOURS OF OPERATION

Daily 8:00 a.m.- Dusk

Guided Tours: Scheduled Tours Only - Please call to schedule

Docent: Days of the Verdugos Heritage Association

FACILITY DESCRIPTION

- The park is 1.3 acres in size and is nestled at the base of the Verdugo Mountains in a residential neighborhood.
- Amenities include a walking trail, a garden, and a shaded picnic area with wooden tables, benches, and electric outlets.
- Smoking, barbecues, and amplified sound are NOT permitted because of the historic nature of the facility.

HISTORY

- The Catalina Verdugo Adobe is registered as California Historical Landmark #637 and Glendale Register of Historic Resources #1.
- The Adobe is the oldest structure in the City of Glendale. As with many early structures, the construction date of the Verdugo Adobe is uncertain. It is said the Adobe was built in 1828, but some research suggests that it dates to 1860.
- It was the home of Catalina Verdugo who, with her brother Julio, owned much of today's Northeast Glendale. Their father, Don Jose Maria Verdugo, was the original recipient of Rancho San Rafael, the Spanish land grant that encompassed large portions of Glendale, Burbank, and Eagle Rock.
- The grounds contain the remnants of the "Oak of Peace," under which a meeting was held in 1847 that led, a few days later, to the signing of the peace treaty, Treaty of Cahuenga, that ended the Mexican-American War.
- The Adobe originally consisted of the main room and the south wing. The north wing was added in the early 1900s, after it was sold to land developer F.P. Newport.
- In 1946, the property was sold to Dr. Ernest Bashor, and his family remained there until it was sold to the City of Glendale in 1989. It is fortunate that the historic value of the original house remained preserved.

HISTORIC LANDMARKS IN GLENDALE PARKS

Stone Barn Nature Center

Deukmejian Wilderness Park

3429 Markridge Road, Glendale, CA 91214

HOURS OF OPERATION

Fridays: 3:00 p.m. – 6:00 p.m.

Saturdays & Sundays: 9:00 a.m.– 6:00 p.m.

Please stop by during our open hours of operation to tour the center and learn about the history of the Deukmejian Wilderness Park and the Barn. Entry is free!

The Stone Barn was originally built between 1905-1915, by the Le Mesnager family. Throughout the years, it has served as a winery, stables, residence, and now a nature center. The roof burned in the 1933 wildfire, but was rebuilt to the curved structure that you see today.

Visit the nature center to learn about the history of the land by the Dunsmoor family, the winery that Georges Le Mesnager and his family operated, and the acquisition of the park by the City of Glendale.

From wildlife to wildfires, our backyard is bursting with exciting nature surroundings! Join us to learn about the tectonic movement that created our mountains, the rare plants that only grow here, and the amazing creatures that call Deukmejian Wilderness Park their home!

For more information, please visit GlendaleCA.gov/StoneBarn or call (818) 937-7428.





Miradero Gateway

Brand Park

1601 W. Mountain St., Glendale, CA 91201

Park Hours of Operation

Daily: 6:00 a.m. - 10:00 p.m.

The Miradero Gateway is the large white archway that marks the entrance to Brand Park on West Mountain Street. At the top of the arch, the word "Miradero" is written across which means "the lookout" in Spanish. Stenciled into the metal gates on the main arch is a stylized "B" that indicated the ownership of the Brand family.



Brand Cemetery

Brand Park

1601 W. Mountain St., Glendale, CA 91201

Park Hours of Operation

Daily: 6:00 a.m. - 10:00 p.m.

The Brand Family Cemetery is a small private, gated, cemetery off a closed access/fire road above the Brand Library & Art Center at the north end of Brand Park. It is the final resting place of the family of Leslie Coombs Brand as well as the family dogs. In the middle of the cemetery, there is a gravestone in the form of a pyramid with the name BRAND stenciled into the grey rock.



Brand Library/El Miradero

Brand Park

1601 W. Mountain St., Glendale, CA 91201

Park Hours of Operation

Daily: 6:00 a.m. - 10:00 p.m.

Brand Library Hours of Operation

Tuesday - Thursday, 11:00 a.m. - 8:00 p.m.

Friday - Saturday, 10:00 a.m. - 5:00 p.m.

Sunday - Monday, CLOSED

Check website for holiday hours

More Information

Info@BrandLibrary.org; (818) 548-2051

BrandLibrary.org

The Brand Library is housed in the mansion Leslie Brand built in 1904 named El Miradero. A gallery and recital hall was added in 1969. Located in Brand Park, high in the foothills overlooking Glendale and the San Fernando Valley, the Library serves an ever-widening public interested in the arts.

The design of El Miradero is similar to the East Indian Pavilion built for the 1893 Columbian World Exposition held in Chicago and visited by Brand. The architecture is considered Saracenic, with crenellated arches, bulbous domes and minars combining characteristics of Spanish, Moorish, and Indian styles.

Brand died in the house in 1925. He bequeathed El Miradero to the city and Mrs. Brand lived in the house until her death in 1945. The will provided that the property be used exclusively for a public park and library. By 1956, the mansion had been converted into Brand Library.

Years later, in response to the need for more arts space, the City Council allocated funds to construct an addition to Brand Library that would include facilities for art exhibitions, lectures and concerts, as well as art and craft studios. The new addition was dedicated in October 1969.



Statue of Miss American Green Cross

Brand Park

1601 W. Mountain St., Glendale, CA 91201

Park Hours of Operation

Daily: 6:00 a.m. - 10:00 p.m.

The Statue of Miss American Green Cross is a 10-foot-high bronze cast statue located in Brand Park, adjacent to the Brand Library & Art Center. The statue was created by sculptor Frederick Willard Potter and dedicated in 1928. Verlyn Sumner was the model for the work. The American Green Cross Society was formally created as a successor to the American Reforestation Association on December 3, 1926. The American Green Cross was an organization dedicated to preserving the country's forests, with headquarters based in Glendale.

The statue was originally displayed at the Glendale High School campus. It was moved in the 1930s and remained lost for two decades. In 1954, the statue was discovered in a remote canyon in Brand Park, though its large base was not present.

The statue was designated as one of the original Glendale city landmarks in 1977, by which time it had become damaged by vandals, its arms lost, and its cross and logs deteriorated. It was placed in storage at the Brand Park maintenance yard in the early 1980s. It was restored by the city at a cost of \$60,000-\$65,000 with the assistance of sculptor Ron Pekar. Its base and arms were recreated based on a historic photograph. The renovated statue was dedicated in September 1992 at its new location adjacent to the Brand Library.

The statue was added as one of the inaugural entries on the Glendale Register of Historic Resources (GRHR No. 12) in 1997.



Adams Square Gas Station

Adams Square Mini Park

1020 E. Palmer Ave., Glendale, CA 91205

Park Hours of Operation

Daily: 7:00 a.m. – 10:00 p.m.

On December 8, 2015, the Glendale City Council approved official listing of the Adams Square Gas Station (originally the Richfield Oil Gas Station) on the Glendale Register of Historic Resources.

The 2015 landmark nomination, made by the City of Glendale's Historic Preservation Commission, was part of an initiative to facilitate formal designation of several significant City-owned properties. The Adams Square mini-park project was completed in 2007 by the City of Glendale in an effort to create a green space in the center of the local business district for the densely populated Adams Hill neighborhood, and to incorporate the historic 1936 Streamline Moderne Gas Station.



Rockhaven Sanitarium

2713 Honolulu Avenue, Glendale, CA 91020
(not open to the public)

Rockhaven is a rare surviving example of the sanitariums that once flourished in the Crescenta Valley. First opened in 1923 by Agnes Richard as a "home for the feeble-minded women," and later known as the "Screen Actor's Sanitarium," Rockhaven housed several Hollywood celebrities, such as Billie Burke, Flo Zigfield, Clark Gable's first wife, as well as Marilyn Monroe's mother. Over time, Agnes Richards purchased several neighboring Craftsman - style houses, and in the late 1920s and 1930s built several Spanish Colonial Revival style buildings which were designed specifically for the purpose of medical care and patient accommodations, expanding the facility to an approximately 3.5 acre site.

The character of this property was as much defined by its landscape as it was by its buildings. The buildings were, and still are, connected by meandering landscaped pathways, intimate gardens, patios, courtyards and expansive perimeter gardens to create a home-like setting for the individual care of the patients. In 1966, Rockhaven was awarded for its landscaping by Los Angeles Beautiful, Incorporated.

The City purchased the property in 2008 from Ararat Home, who had purchased the property in 2001 to operate a convalescent facility. The facility remains closed to the public at this time due to safety concerns.

You can read more about the facility by visiting the City's website, GlendaleCA.gov, and searching Rockhaven in the search bar.



Wallace House

Glendale Heritage Garden
141 S. Cedar St., Glendale, CA 91205

Park Hours of Operation

Daily: 7:00 a.m. - 10:00 p.m.

The 1913, City-owned Wallace House at the northwest corner of South Cedar and East Harvard streets is a one-story Craftsman-style bungalow. The house was built in 1913; its architect and builder are unknown. The original owners were John and Martha Ellen Wallace, and after their deaths, their daughter Helen lived in the house until 1988.

Wallace House is an excellent vernacular example of the Craftsman style and one of the best and most intact examples in the Harvard neighborhood of South Glendale.



Nibley Park

1103 E. Mountain St., Glendale, CA 91207

Park Hours of Operation

Daily: 7:00 a.m. - 10:00 p.m.

Rossmoyne is one of Glendale's most interesting historic neighborhoods, rich with some of our finest residential architecture. The historic district - Glendale's largest - consists of 503 homes set along gently curving streets and features an outstanding variety of Period Revival homes, including excellent examples of the Spanish Colonial Revival, Tudor Revival, and French-inspired designs. The area was developed by the Haddock-Nibley Company beginning in 1923 and was largely built out by 1950.

Nibley Park, donated to the city by the developer, is included in the district. The Royal Boulevard Historic District includes a portion of the second phase of the Rossmoyne development.

STEPS TO RENT A PARKS FACILITY



1. For a picnic, wedding, or community building reservation, please complete a [Facility Permit Application](#) and submit it online. For sports requests, please complete a [Field Reservation Request Form](#), and return it to the location listed on the form. These forms are available at GlendaleCA.gov/Reservations.
2. Upon confirmation of availability of the facility, staff will contact you with any follow up questions, and to discuss your permit.
3. Upon receiving your permit, make arrangements with staff to finalize all permit requirements, and make all applicable payments.
4. Two weeks prior to the event date, reach out to staff to discuss and finalize the plot plan, if applicable.

If you have any questions or wish to discuss availability prior to applying, please contact the facility.

- For Picnic Sites, Community Buildings, and Wedding sites (except Deukmejian Wilderness Park facilities), call the Customer Service office at (818) 548-2184 or (818) 548-2752.
- For Deukmejian Wilderness Park Picnic Shelters, Amphitheatre, and Stone Barn Nature Center, call (818) 937-7428.
- For Community Centers, call the community center you want to rent.
 - Adult Recreation Center - (818) 548-3775
 - Maple Park Community Center - (818) 548-3694
 - Pacific Community Center - (818) 548-4098
 - Sparr Heights Community Center - (818) 548-2188
- For Glendale Civic Auditorium, call (818) 548-2787.
- For Sports Fields, call the appropriate office, as follows. For field reservations at the Glendale Sports Complex and all citywide fields, except Pacific Park, call the Sports Office at (818) 548-6420. For field reservations requests at Pacific Park ONLY, call Pacific Community Center at (818) 548-4098.

Please visit GlendaleCA.gov/Reservations for additional information.

COMMUNITY CENTERS

GlendaleCA.gov/Reservations



Adult Recreation Center

201 E. Colorado St.
Glendale, CA 91205
(818) 548-3775

Indoor Spaces:

- Dining Hall, maximum capacity: 240
- Multi-Purpose Room, maximum capacity: 80
- Activity Room, maximum capacity: 15
- Full service kitchen available. *Must be reserved in conjunction with a room reservation. You must bring your own kitchen equipment including pots, pans, utensils, storage ware, etc.*

Outdoor Spaces:

- Upper Courtyard, maximum capacity: 24
- Lower Courtyard, maximum capacity: 56



Maple Park Community Center

820 E. Maple St.
Glendale, CA 91205
(818) 548-3783 or (818) 548-3694

Indoor Spaces:

- Meeting Room 101, maximum capacity: 60
- Meeting Room 102, maximum capacity: 75
- Gymnasium, maximum capacity: 200
- Two Kitchenettes equipped with warming oven, microwave, and sink. *Must be reserved in conjunction with a room reservation. You must bring your own kitchen equipment including pots, pans, utensils, storage ware, etc.*

Outdoor Spaces:

- Terrace, maximum capacity: 20

COMMUNITY CENTERS

GlendaleCA.gov/Reservations



Pacific Park and Community Center

501 S. Pacific Ave.
Glendale, CA 91204
(818) 548-4098

Indoor Spaces:

- Gym A, maximum capacity: 300
- Gym B with Stage, maximum capacity: 300
- Red Bud Room, maximum capacity: 40
- Sycamore Room, maximum capacity: 60
- Oak Room, maximum capacity: 32
- Conference Room, maximum capacity: 8
- A kitchenette equipped with an oven, 6 burner stove top, warming oven, microwave, and three basin sink. *Must be reserved in conjunction with a room reservation. You must bring your own kitchen equipment including pots, pans, utensils, storage ware, etc.*

Outdoor Spaces:

- Little League Baseball Field
- Multi-Use Artificial Turf Field with soccer lines
- Terrace, maximum capacity: 24
- Multi-Use Court with basketball and Pickleball lines
- Two picnic shelters, maximum capacity: 50 each (equipped with a barbecue and sink)



Sparr Heights Community Center

1613 Glencoe Way
Glendale, CA 91208
(818) 548-2187

Indoor Spaces:

- Verdugo Room maximum capacity: 100
- Garden Room maximum capacity: 40
- A Kitchenette equipped with warming oven, microwave, and two basin sink. *Must be reserved in conjunction with a room reservation. You must bring your own kitchen equipment including pots, pans, utensils, storage ware, etc.*

Outdoor Spaces:

- South Patio maximum capacity: 80
- North Patio maximum capacity: 8

PICNIC FACILITIES

(818) 548-2184 | (818) 548-2752
GlendaleCA.gov/Reservations

Verdugo Park

1621 Canada Blvd., Glendale, CA 91208

- Sections: 5
- Maximum Capacity: 100 per section
- Amenities Include: BBQ grill, electrical outlets available in sections 2, 3, 4
- Jumper permitted

Catalina Verdugo Adobe

2211 Bonita Ave., Glendale, CA 91208

- Pavilions: 1
- Maximum Capacity: 50
- Amenities Include: electrical outlets
- No onsite cooking

Palmer Park

610 E. Palmer Ave., Glendale, CA 91205

- Pavilions: 2
- Maximum Capacity: 50 per pavilion
- Amenities Include: electrical outlets, BBQ grill, sink
- Jumper permitted

Cerritos Park

3690 San Fernando Rd., Glendale, CA 91204

- Pavilions: 1
- Maximum Capacity: 30
- Propane gas BBQ only
- Jumper permitted

Deukmejian Wilderness Park

3429 Markridge Rd., Glendale, CA 91214
 (818) 548-7428

- Pavilions: 2
- Maximum Capacity: 12 (two tables)
- Amenities Include: electrical outlets
- No onsite cooking

Lower Scholl Canyon Park

2847 E. Glenoaks Blvd., Glendale, CA 91206

- Pavilions: 3
- Maximum Capacity: 80 per pavilion
- Amenities Include: BBQ grill, sink, electrical outlets
- Jumper permitted

Casa Adobe de San Rafael

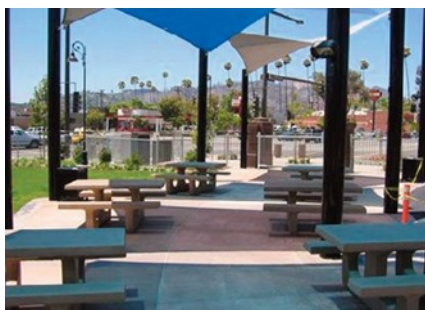
1330 Dorothy Dr., Glendale, CA 91202

- Pavilions: 1
- Maximum Capacity: 100
- Amenities Include: sink, electrical outlets
- Jumper permitted
- No onsite cooking

Central Park Paseo

220 S. Brand Blvd., Glendale, CA 91205

- Maximum Capacity: 75
- Amenities Include: electrical outlets



COMMUNITY BUILDINGS

(818) 548-2184 | (818) 548-2752

GlendaleCA.gov/Reservations

Griffith Manor Community Room

1551 Flower St., Glendale, CA 91201

- Maximum Capacity: 50
- Amenities Include: tables, chairs, warming oven, refrigerator, sink
- Jumper permitted



Dunsmore Community Building

4700 Dunsmore Ave., Glendale, CA 91214

Dunsmore Community Room

- Maximum Capacity: 50
- Amenities Include: tables, chairs
- Jumper permitted

Dunsmore Community Room Kitchen

- Amenities Include: sink, warming oven, refrigerator



Joe Bridges Clubhouse

2531 E. Glenoaks Blvd., Glendale, CA 91206

- Maximum Capacity: 100
- Amenities Include: tables, chairs, warming oven, refrigerator, sink
- Jumper permitted



Brand Studios

1601 W. Mountain St., Glendale, CA 91201

- Maximum Capacity: 100
- Amenities Include: tables, chairs, microwave, refrigerator, sink
- No onsite cooking



WEDDING SITES

GlendaleCA.gov/Reservations

Brand Friendship Garden & Victorian Gazebo

1601 W. Mountain St., Glendale, CA 91201

(818) 548-2184 | (818) 548-2752

- Maximum Capacity: 200
- Amenities Include: 100 white chairs, electrical outlets



Casa Adobe de San Rafael

1330 Dorothy Dr., Glendale, CA 91202

(818) 548-2184 | (818) 548-2752

- Maximum Capacity: 100
- Amenities Include: sink, 100 white plastic chairs, electrical outlets
- Jumper permitted
- No onsite cooking



Catalina Verdugo Adobe

2211 Bonita Ave., Glendale, CA 91208

(818) 548-2184 | (818) 548-2752

- Maximum Capacity: 50
- Amenities Include: electrical outlets, resin picnic tables, fountain, and kitchenette with a counter and sink



Deukmejian Wilderness Park Amphitheatre

3429 Markridge Rd., Glendale, CA 91214

(818) 937-7428

- Maximum Capacity: 100
- Amenities Include: electrical outlets



OTHER FACILITIES

GlendaleCA.gov/Reservations

Civic Auditorium

1401 N. Verdugo Rd., Glendale, CA 91208
(818) 548-2787 | GlendaleCivic.com

Indoor Spaces:

- Upper Auditorium, maximum capacity: 1,100
- Commercial Kitchen on both levels
- Terrace Room, maximum capacity: 125 - *Must be reserved in conjunction with the Upper Auditorium*

Parking:

- Parking Lot and/or Structure - *Must be reserved in conjunction with the Upper Auditorium*



Glendale Sports Complex

2200 Fern Lane, Glendale, CA 91208
(818) 937-7440

Indoor Spaces:

- Meeting Room, maximum capacity: 30

Outdoor Spaces:

- Majors Artificial Turf Baseball Field with soccer lines for U12
- 2 Natural Grass Softball Fields
- 2 Artificial Turf Soccer Fields



Pacific Community Pool

509 S. Pacific Ave., Glendale, CA 91204
(818) 937-7433 | GlendaleAquatics.com

Outdoor Spaces:

- 25 yard / 6-lane pool
- Shallow end for recreation swim
- 2'-10' depth



Stone Barn Nature Center at Deukmejian Wilderness Park

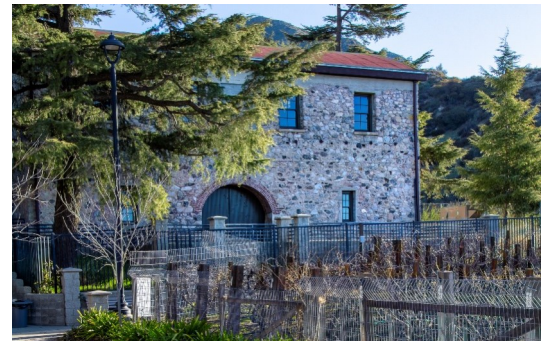
3429 Markridge Road, Glendale, CA 91214
(818) 937-7428

Outdoor Spaces:

- Outdoor amphitheater area with capacity of 100 & electrical outlets
- Patio of the Stone Barn
- 2 outdoor picnic pavilions available for rentals

Indoor Spaces:

- Indoor Stone Barn Nature Center (with center exhibits shifted to edges of room) with capacity of 80. Amenities include banquet tables and white folding chairs, electric outlets, and WiFi.

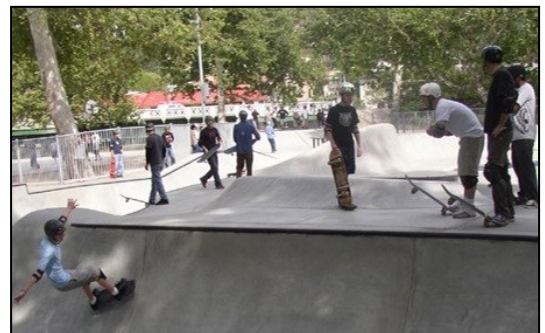


Verdugo Skate Park

1621 Canada Blvd., Glendale, CA 91208
(818) 548-2786 for hours and operation
(818) 548-2184 for facility rentals

Outdoor Spaces:

- 15,000 square foot concrete facility
- 6-9 foot Clover Bowl with an 11 foot Over-Vert section
- 6-10 foot Kidney Pool
- Street Plaza with rails and ledges
- Snake Run that empties into a 9 foot bowl with a loveseat



Phone Directory

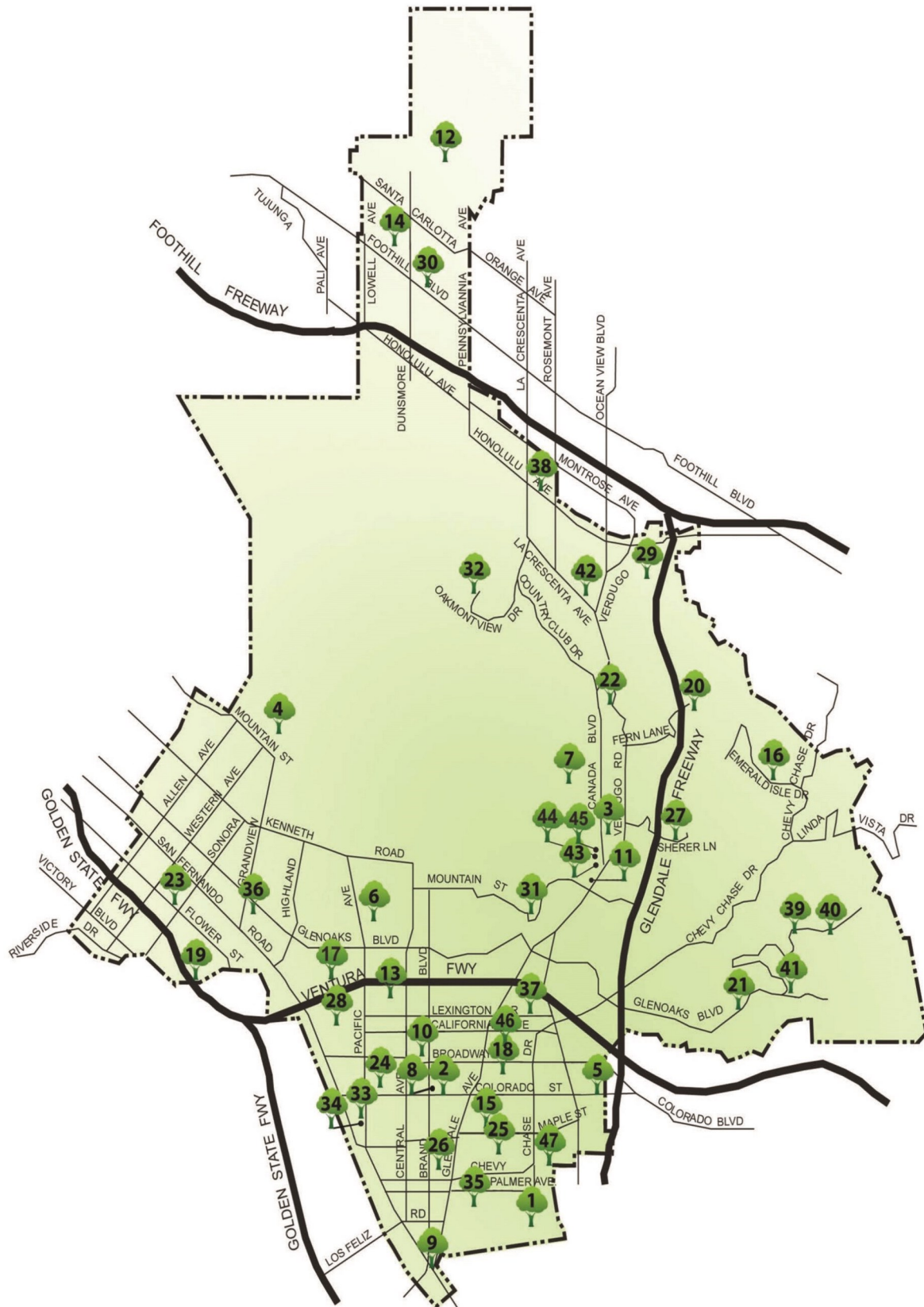
Administration Office (818) 548-2000 Fax: (818) 548-3789

RECREATION PROGRAMS

Aquatics Programs	(818) 937-7433
Customer Service Office	(818) 548-2184, (818) 548-2752
Contract Classes Registration	(818) 548-2184, (818) 548-2752
Trails & Open Space Program	(818) 548-3795
Party On the Go!/Climbing Wall/Flicks on the Go!.....	(818) 548-3773
Senior Programs & Services	(818) 548-3775
Sports Programs for Adults and Youth	(818) 937-7440
Therapeutic Recreation Programs	(818) 548-3783
Verdugo Skate Park	(818) 548-2786
Volunteer Program	(818) 548-4158
Youth & Family Services Program	(818) 937-7247

FACILITY RESERVATION AND INFORMATION

Adult Recreation Center	(818) 548-3775
Brand Studios	(818) 548-2184, (818) 548-2752
Civic Auditorium	(818) 548-2787
Film Permits	(818) 548-3813
Glendale Sports Complex & Sports Fields	(818) 937-7440
Maple Park Community Center	(818) 548-3783
Pacific Community Center	(818) 548-4098
Pacific Community Pool	(818) 937-7433
Park & Picnic Reservations	(818) 548-2184, (818) 548-2752
Photography Permits	(818) 548-2184, (818) 548-2752
Sparr Heights Community Center	(818) 548-2187
Stone Barn Nature Center at Deukmejian Wilderness Park	(818) 937-7428
Wading Pool Reservations	(818) 937-7433
Wedding Reservations	(818) 548-2184, (818) 548-2752



PARKS, COMMUNITY CENTERS, HISTORIC SITES, AND SPECIAL USE FACILITIES

Facility Information

1	Adams Square Mini Park	<u>1020 E. Palmer Ave. Glendale, CA 91205</u>
2	Adult Recreation Center & Central Park	<u>201 E. Colorado St. Glendale, CA 91205</u>
3	Babe Herman Little League Field	<u>1726 Cañada Blvd. Glendale, CA 91208</u>
4	Brand Park	<u>1601 W. Mountain St. Glendale, CA 91201</u>
5	Carr Park	<u>1615 E. Colorado St. Glendale, CA 91205</u>
6	Casa Adobe de San Rafael & Park	<u>1330 Dorothy Dr. Glendale, CA 91202</u>
7	Catalina Verdugo Adobe	<u>2211 Bonita Dr. Glendale, CA 91208</u>
8	Central Park Paseo	<u>220 S. Brand Blvd. Glendale, CA 91202</u>
9	Cerritos Park	<u>3690 San Fernando Rd. Glendale, CA 91204</u>
10	Chess Park	<u>227 N. Brand Blvd. Glendale, CA 91202</u>
11	Civic Auditorium	<u>1401 N. Verdugo Rd. Glendale, CA 91208</u>
12	Deukmejian Wilderness Park and Stone Barn Nature Center	<u>3429 Markridge Rd. Glendale, CA 91214</u>
13	Doran Gardens Mini Park	<u>327 W. Doran St., Glendale, CA 91203</u>
14	Dunsmore Park	<u>4700 Dunsmore Ave. Glendale, CA 91214</u>
15	Elk Mini Park	<u>800 E. Elk Ave. Glendale, CA 91205</u>
16	Emerald Isle Park	<u>2130 Lenore Dr. Glendale, CA 91206</u>
17	Fremont Park (temporarily closed)	<u>600 W. Hahn Ave. Glendale, CA 91203</u>
18	Glendale Heritage Garden	<u>141 S. Cedar St. Glendale, CA 91205</u>
19	Glendale Narrows Riverwalk	<u>300 Paula Avenue, Glendale, CA 91201- West Entrance</u>
20	Glendale Sports Complex	<u>2200 Fern Lane Glendale, CA 91208</u>
21	Glenoaks Park	<u>2531 E. Glenoaks Blvd. Glendale, CA 91206</u>
22	Glorietta Park	<u>2801 N. Verdugo Rd. Glendale, CA 91208</u>
23	Griffith Manor Park	<u>1551 Flower St. Glendale, CA 91201</u>
24	Harvard Mini Park	<u>425 W. Harvard Glendale, CA 91204</u>
25	Maple Park and Community Center	<u>820 E. Maple St. Glendale, CA 91205</u>
26	Maryland Avenue Park	<u>812 S. Maryland Avenue, Glendale, CA 91205</u>
27	Mayors Bicentennial Park	<u>1787 Loma Vista Dr. Glendale, CA 91208</u>
28	Milford Mini Park	<u>601 W. Milford Ave. Glendale, CA 91203</u>
29	Montrose Park	<u>3529 Clifton Place, Glendale, CA 91208</u>
30	New York Park	<u>4525 New York Ave. Glendale, CA 91214</u>
31	Nibley Park	<u>1103 E. Mountain St. Glendale, CA 91207</u>
32	Oakmont View Park	<u>2940 Oakmont View Dr. Glendale, CA 91208</u>
33	Pacific Park & Community Center	<u>501 S. Pacific Ave. Glendale, CA 91204</u>
34	Pacific Community Pool	<u>509 S. Pacific Ave. Glendale, CA 91204</u>
35	Palmer Park	<u>610 E. Palmer Ave. Glendale, CA 91205</u>
36	Pelanconi Park	<u>1000 Grandview Ave. Glendale, CA 91201</u>
37	Piedmont Park	<u>1145 E. Lexington Dr. Glendale, CA 91206</u>
38	Rockhaven - CLOSED FOR PUBLIC USE	<u>2713 Honolulu Ave., Glendale, CA 91020</u>
39	Scholl Canyon Athletic Fields	<u>3200 E. Glenoaks Blvd. Glendale, CA 91206</u>
40	Scholl Canyon Golf Course & Tennis Center	<u>3800 E. Glenoaks Blvd. Glendale, CA 91206</u>
41	Scholl Canyon Park & Picnic Area	<u>2849 E. Glenoaks Blvd. Glendale, CA 91206</u>
42	Sparr Heights Community Center	<u>1613 Glencoe Way Glendale, CA 91208</u>
43	Stengel Field	<u>1601 Cañada Blvd. Glendale, CA 91208</u>
44	Verdugo Park	<u>1621 Cañada Blvd. Glendale, CA 91208</u>
45	Verdugo Skate Park	<u>1621 Cañada Blvd. Glendale, CA 91208</u>
46	Wilson Mini Park	<u>1101 E. Wilson Glendale, CA 91206</u>
47	Windsor Mini Park	<u>1300 E. Windsor Glendale, CA 91205</u>

