

City of Glendale, Community Services & Parks

Leisure Guide

WINTER 2022-2023



PROGRAMS, ACTIVITIES AND PARKS
CHECK OUT OUR HOLIDAY TREE LIGHTING EVENT!



[Glendaleca.gov/Parks](https://www.glendaleca.gov/Parks)

[@MyGlendaleParks](https://www.instagram.com/MyGlendaleParks)

[#MyGlendaleParks](https://twitter.com/MyGlendaleParks)

What's Inside

3	Greetings from the Director
4	E-Newsletter Information
5-6	Special Events
7	Special Events - Historic Facilities
8-10	Party Packages
11	Glendale Youth Alliance
12-13	Day Camps - Registration Information
14-15	Day Camps - Winter
16-17	Specialty Day Camp - Winter
18-19	Day Camps - Spring
20	Specialty Day Camp - Spring
21-23	Youth & Family Services
24-25	Drop-In Programs
26-27	Trails & Open Space Programs
26-27	Stone Barn Nature Center Programs
29-30	Verdugo Skate Park Programs
31	Aquatics
32	Contract Class Information
33	Registration Information
34-36	Youth Classes
37-40	Youth Sports
41-42	Adult Classes
43-45	Adult Sports
46	GCC Senior Classes
47-51	Senior Classes & Activities
52-53	Senior Services
54	Filming in Parks & Community Buildings
55-56	Tours of Historic Facilities in Glendale Parks
57-58	Historic Buildings in Glendale Parks
59-70	Facility Reservations
71	Phone Directory
72	Facility Information
73	Map of Glendale Parks

Events and programs in this Leisure Guide may be cancelled due to L.A. County Department of Public Health protocols. For updates, visit www.glendaleca.gov/LG.

Councilmembers

Honorable Ardashes "Ardy" Kassakhian, *Mayor*
Ara Najarian, Paula Devine, Daniel Brotman, and Elen Asatryan

Parks, Recreation & Community Services Commission

Henrik Sardarbegian, *President*

Commissioners:

Regina Alcazar, Ara Kalfayan, Stephen Meek, and Susan Wolfson

CDBG Advisory Committee

Ronnie Gharibian, *Chair*

Anita Quiñonez Gabrielian, *Vice Chair*

Committee Members:

Zanku Armenian, Armik Avedisian, and Marina Manoukian

Management Services

Roubik Golanian, *City Manager*

John Takhtalian, *Deputy City Manager*

Community Services & Parks

Onnig Bulanikian, *Director*

Tereza Aleksanian, *Deputy Director - Admin, R&CS, Human Services*

Koko Panossian, *Deputy Director - Park Services and Park Planning*

Judith Velasco, *Workforce Development Administrator*

Arsine Isayan, *Homeless Programs Manager*

Maggie Kavarian, *Community Services Manager - CDBG*

Gabrielle Goglia, *Community Services Manager - R&CS*

Sevag Garabetian, *Community Services Manager - R&CS*

SATISFACTION GUARANTEE

Satisfaction is guaranteed on all programs. If you are not satisfied with the quality of our programs, for any reason, we encourage you to contact us immediately so that we can work to resolve your concerns and improve the quality of our programs for all participants.

Si tiene necesidad de interpretación, favor de llamar al (818) 548-2782.

Հայերեն տեղեկությունների համար զանգահարել հետևյալ հեռախոսահամարով (818)548-2000

Administration Office: (818) 548-2000

glendaleca.gov/parks



Follow us on Twitter: [@MyGlendaleParks](https://twitter.com/MyGlendaleParks) and



facebook.com/MyGlendaleParks

Greetings from the Director



Spring 2023

Bask in the beauty of spring, and give your soul a boost! Let nature inspire you to continue with your 2022 resolutions and bring growth and rejuvenation to your life.

Take advantage of the longer daylight hours by getting the family together or taking some time to yourself and visiting one of our neighborhood parks, trails and open space areas, and historic homes. Reserve one of our picnic areas or community buildings for a fun gathering or celebration, or participate in a vast array of CSP programs, classes, activities and events sure to reenergize you and bring you personal growth. Community Services & Parks has something for everyone!

Youth of all ages are invited to participate in Spring Break Camps, youth sports activities, and Life Long Learning classes. We know the importance of planning ahead, so we've included Summer Day Camp and Aquatics Program information inside too!

Adults are encouraged to enroll in Life Long Learning Classes, such as yoga or visual art; participate in open play badminton; and tennis classes. Our adult programs and activities are offered at a variety of times to meet everyone's busy schedule.

Senior adults will enjoy taking part in ongoing education and leisure programs. A nutritional meals program, and a case management, counseling and referral program are also available.

Last but not least, the Community Services & Parks Department is proud to present several special events this season, including the Cesar Chavez Celebration, Spring Eggstravaganza, and Verdugo Mountains 10K Trail Run & Hike. Plan ahead for the annual Cruise Night event, taking place this summer. Look inside for details.

Don't miss out on the latest information; get on our e-mail list, sign up to receive our monthly CSP Newsletter, and follow us on Twitter and Facebook @MyGlendaleParks. Take a look inside for more information.

Respectfully,

A blue ink signature of Onnig Bulanikian.

**Parks
Make
Life
Better!**


Onnig Bulanikian, Director
Community Services & Parks Department

E-Newsletter Information

Community Services & Parks (CSP) Monthly E-Newsletter

Get the most up-to-date information about what is happening in the Community Services & Parks Department by signing up to receive the department's monthly E-Newsletter.

Learn about upcoming events, community meetings, registration deadlines, parks projects, ongoing programs and services, program success stories, and more.




Community Services
& Parks *Newsletter*

May 2022

Please visit www.glendaleca.gov/covid for the most up-to-date COVID-19 news.

**The Stone Barn Nature Center
Is Now Open!**



Deukmejian Wilderness Park
[3429 Markridge Road, Glendale, CA 91214](http://3429MarkridgeRoad.Glendale.CA91214)

Hours of Operation
Fridays: 3:00 p.m. – 6:00 p.m.
Saturdays & Sundays: 9:00 a.m. – 6:00 p.m.
Closed on April 17, 2022

The Stone Barn Nature Center is now open! Please stop by during our open hours of operation to tour the center and learn about the history of the Deukmejian Wilderness Park and the Barn. Entry is free!



Visit www.glendaleca.gov/cspnewsletter to subscribe.

(P.S. We never make your e-mail address available to any other company or organization.)

Special Events

Drop off the kids for a night of fun activities, friends, food and a movie. The fee is \$15.00 per child, ages 5 to 14 years old. Parent's Night Out participants are encouraged to bring pajamas, a blanket and a pillow.

PARENT'S NIGHT OUT

Pacific Community Center

501 S. Pacific Ave., Glendale, CA 91204

Dates: November 18, 2022

Time: 6:00 p.m. - 12:00 a.m.

PARENT'S DAY OUT

Pacific Community Center

501 S. Pacific Ave., Glendale, CA 91204

Dates: December 18, 2022

Time: 10:00 a.m. - 4:00 p.m.

For more information, please call:

**(818) 548-4098 for Pacific Community Center or
(818) 548-2787 for Sparr Heights Community Center**



Events and programs may be cancelled due to L.A. County Department of Public Health protocols. For updates, visit www.glendale.ca.gov/LG.

Special Events



The City of Glendale and Community Services & Parks Department cordially invite you to the



Holiday Tree Lighting Ceremony

Thursday, December 1, 2022 at 6PM

City Hall Perkins Plaza

613 E. Broadway, Glendale, CA 91206

Featuring: Lighting of the City Hall tree, special performances and a visit from Santa. Don't forget to bring your unwrapped toy for the Cram-A-Classic Toy Drive!

Cram-A-Classic Toy Drive

Friday, November 25, 2022 from 5:30PM - 7:30PM

Montrose Shopping Park

Corner of Honolulu and Ocean View Blvd.

Thursday, December 1, 2022 from 6PM - 8PM

Holiday Tree Lighting Event

122 N. Isabel St., Glendale, CA 91206

(the parking lot behind City Hall Perkins Plaza)

Glendale Fire Department and ABC 7, in conjunction with Community Services & Parks, invite you to bring a new, unwrapped toy to one of the Toy Drive events. Help us cram our classic fire truck with toys! Glendale Firefighters will collect and distribute toys to the underserved children in our community. The children depend on the generosity of our community.



Community Services
& Parks

Free parking for the Holiday Tree Lighting Event is at the Civic Center visitor's parking structure, located at 620 E. Wilson Ave., Glendale, CA 91206.

In case of rain, the events may be cancelled. For more information, please call (818) 548-2000 or email CSP@glendaleca.gov



@MyGlendaleParks



Special Events - Historic Facilities

"Shoseian" Whispering Pine Teahouse & Friendship Garden

Inside Brand Park, 1601 West Mountain St., Glendale, CA 91201; (310) 849-5432



Join the Friends of the Shoseian Teahouse every third Sunday of the month for these family friendly events.

Holiday Tea & Japan Cultural Day

Date: December 18, 2022
Time: 10:00 a.m. - 3:00 p.m.
Garden Entry: Free
Tea Ceremony: \$20 per person

Visit www.glendaleteahouse.org for more information. Please RSVP to: info@glendaleteahouse.org

Casa Adobe de San Rafael

1330 Dorothy Dr., Glendale, CA 91202; (818) 396-6840
For more information, please contact info@glendalebeautiful.org.

Saturday, December 10, 2022 at 3:00PM – 7:00PM

Glendale Beautiful invites you to see the historic Casa Adobe de San Rafael on December 10 surrounded in candlelight for the Fiesta de Las Luminarias.

Throughout the year, volunteer members of Glendale Beautiful, a local non-profit dedicated to keeping our city beautiful and preserving our early California history, host an open house at the historic Casa Abode de San Rafael from 1:00 p.m. to 3:00 p.m. on the 1st Sunday of each month only. Information describing the Casa in Armenian, English, and Spanish is available, and docents can answer questions and share other historical background during the open house.



The historic casa was built for Tomas and Maria Sanchez from adobe bricks made on site. The home was completed in 1871 and is furnished in late 19th-century style. Casa Adobe is California Landmark #235, and is Glendale Register of Historic Resources #3. There is a suggested donation of \$2.00 per person to help Glendale Beautiful care for the Casa.

Party Packages



Party on the Go!

Each party package is designed for children ages 5 - 12 and will include arts and crafts, sports and games. The basic **"Party on the Go!"** package will include two staff for two hours and 6 games/activities for up to 12 children. Additional fees will apply for larger packages.

Programs limited to the Glendale and La Crescenta area.

FEES:

- Standard pricing: \$300 for the first 2 hours
- \$100 for every hour thereafter
- Non-profit rates available upon request and approval with proper tax status documentation

Half of the total rental fees are due at the time of reservation to guarantee date.

Standard Package includes six (6) from the following:

Games

Potato Sack Races
Capture the Flag
Balloon Toss
Bingo
Hula Hoop Contest
Frisbee Distance Throw
Obstacle Course

Arts and Crafts

Paint art
Clay art
Foamy art
Bead art
Wooden art
Glitter art
Coloring



For more information, please call: (818) 548-2188.

Events and programs may be cancelled due to L.A. County Department of Public Health protocols. For updates, visit www.glendale.ca.gov/LG.

Party Packages

Glendale ROCKS! Climbing Wall



**For More Information
Call (818) 548-2188**

**Parks
Make
Life
Better!**

Glendale Rocks! portable climbing wall is 26 vertical feet of pure fun and excitement! The wall can be used for fundraisers, company events, grand openings, physical education classes or special events. The wall can handle 4 climbers at a time and up to 45 climbers per hour. The standard rental package will include two employees, the wall, and safety equipment for a two hour period.

Program limited to the Glendale and La Crescenta area.

FEES:

- Standard pricing: \$300 for the first 2 hours
- \$100 for every hour thereafter
- Non profit rates available upon request and approval with proper tax status documentation

Half of the total rental fees are due at the time of reservation to guarantee date.

Party Packages



Watching a movie under the moonlight brings back the days of the drive-in era and will surely have nostalgic appeal to families throughout our community. Watching a movie, playing video games or streaming content on a large screen during your outdoor special event will definitely elevate your event and add a hip factor. We have two packages available for your special event!

Flicks on the Go! – Package A

- 17 foot wide by 10 foot tall large projection screen with high powered video projection
- High Powered Sound System with 4 Speakers up to 1,000 Watt max output each
- Blue Ray DVD Player (Customer is responsible for license fees and obtaining rights to display content)
- Generator to provide power
- 3 employees for delivery, installation, operation and breakdown
- A popcorn machine, carnival games, craft tables are available for an additional fee

Flicks on the Go! – Package B

- 15 foot wide by 8 foot tall LED Screen with 936 X 520p (4.81mm) resolution
- Height Adjustable and full 360 degree rotation for optimal viewing
- High Powered Sound System with 2 Speakers up to 1,000 Watt max output each
- Blue Ray DVD Player
- Dish Network Satellite Feed (Customer is responsible to pay license fees and obtain rights to display content)
- HDMI and SDI auxiliary inputs for live feed
- HDMI auxiliary input for gaming consoles (Gaming console not included)
- Generator to provide power
- A popcorn machine, carnival games, craft tables are available for an additional fee

**For program information, please call
(818) 548-2188.**

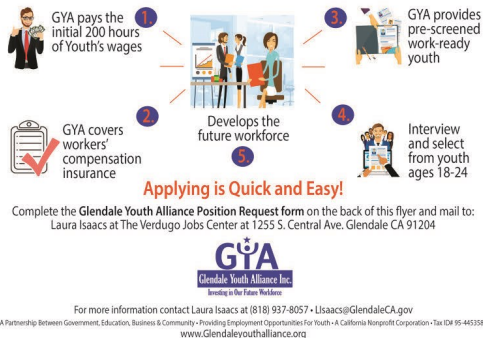


Glendale Youth Alliance



Make a difference in our community by investing in our local youth and hiring through GYA!

Business Owners



Private Property Owners

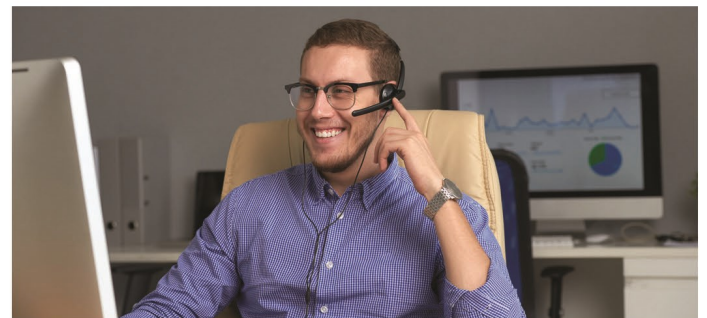


Hire our supervised teams to perform hillside brush clearance on your property for a reasonable fee. GYA teams can also be hired for other general labor tasks. All work teams are fully insured, supervised and have their own tools and transportation. Reasonable Prices! Quality of work guaranteed!

Services Available:

- Hillside clearance
- Yard maintenance
- Landscaping
- Brush abatement & clearance
- Property clean up and general labor tasks
- Mudslide prevention work

For a free estimate, call (818) 548-3727.



Need additional help with your operations?

Hire through the GREAT program, and we can place an employee in a short time frame. It's easy and hassle free. GYA will provide pre-screened youth, cover the workers' compensation insurance and payroll. Your business will be billed bi-monthly for the youth wages. Call us today at (818) 937-8056.

For more information about GYA programs, please call (818) 937-8073, or visit us at www.glendaleyouthalliance.org.

Like us on Facebook and stay connected!

Day Camp Registration Information

The Community Services & Parks Department is pleased to offer day camps each season. Please see the individual camp listings for specific details on each camp.

Camps in this Issue: Important Dates

<u>Season</u>	<u>Scholarship/Discount Applications Due by 5 p.m.</u>	<u>Registration Begins</u>	<u>Camp Dates</u>
Winter Break	September 16, 2022	October 24, 2022	December 27 - 30 & January 3 - 6, 2023
Spring Break	January 13, 2023	February 13, 2023	March 13 - 17, 2023

Registration

Online: Registration is available at www.myglendaleparks.com.

Phone: Call the community center where the camp is taking place, or the Customer Service Office at (818) 548-2752.

In Person: Visit the community center where the camp is taking place or the Customer Service Office located at the Civic Auditorium, 1401 N. Verdugo Rd., Glendale, CA 91208.

Residency Status

The Community Services & Parks Department (CSP) offers reduced Glendale Resident rates for day camps to customers who reside within Glendale Unified School District boundaries and have provided the required proof of residency. Customers only need to verify residency once per year during any season, but must re-submit proof every summer regardless of which season residency status was last verified. **Proof of residency can be provided at the time of in-person camp registration, but in order to obtain Glendale Resident rates while registering online or by phone, residency status must be verified in advance.**

You can obtain residency status in advance of camp registration by emailing a copy of your two most recent utility bills or a copy of your current, executed rental agreement to our Customer Service Office at cspcustomerservice@glendaleca.gov. Please include your full name, valid address, and a copy of the proof in the email. Emails will be reviewed within two (2) business days, and you will receive an email response confirming residency when it has been completed.

Customers not verified as Glendale Residents at the time of registration will be charged non-resident rates and will NOT be refunded the difference for any non-resident rates paid, even if proof is provided at a later time. 2022 residency verification began on March 21, 2022!

You may also pre-register in person during business hours at any of the following locations:

Adult Recreation Center
201 E. Colorado Street
Glendale, CA 91205
(818) 548-3775

Customer Service Office
1401 N. Verdugo Rd.
Glendale, CA 91208
(818) 548-2184

Glendale Sports Complex
2200 Fern Lane
Glendale, CA 91208
(818) 548-6420

Maple Park Community Center
820 E. Maple St.
Glendale, CA 91205
(818) 548-3694

Pacific Community Center
501 S. Pacific Ave.
Glendale, CA 91204
(818) 548-4098

Pacific Community Pool
509 S. Pacific Ave.
Glendale, CA 91204
(818) 937-7433

Sparr Heights Community Center
1613 Glencoe Way
Glendale, CA 91208
(818) 548-2188

Stone Barn Nature Center
3429 Markridge Rd.
Glendale, CA 91214
(818) 937-7440

Day Camp Registration Information

Scholarship and Discount Opportunities

Glendale residents may be eligible to receive a scholarship for camps at Maple Park Community Center or Pacific Community Center. A discount is also available for Glendale residents at all locations, based on household income levels. Please visit www.glendaleca.gov/daycamps and click on Scholarship and Discount Opportunities for details.

Late Registration and Cancellation Policy

- A \$20 late registration fee will be charged per camper for payments not received by Wednesday at 5:00 p.m. prior to the week for which you are registering.
- A cancellation fee of \$20 per week, per child will be assessed for all transfers and cancellations of camp locations, dates of enrollment, or participation.

Day Camp T-Shirts

A camp T-shirt may be purchased at camp for \$5 (cash or check). Shirts must be purchased for camps that go on excursions and must be worn on excursion day.

Special Needs Accommodations

The Community Services & Parks Department will provide reasonable accommodations toward the inclusion of a participant. Please contact the Therapeutic Recreation Program supervisor at (818) 548-3783 two weeks prior to the start of the program. Ample time is required to determine the needs for each request. Children who are accompanied by a one-to-one aide must have the aide present during their time in the program. All aides must undergo a background check through the City of Glendale, and must be approved before beginning work. **Children who require an aide may not begin the program without an approved aide.**

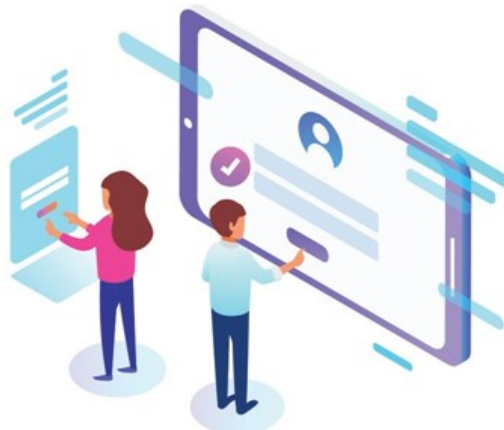
Payment Methods

Online: Credit Card

Over the Phone: Credit Card*

In Person: Cash, Check, or Credit Card*

* All In-Person and Phone Credit Card transactions will incur a non-refundable 2.5% service fee.



Day Camps - Winter

Kool Dayz Winter Camp

Pacific Community Center
501 S. Pacific Ave., Glendale, CA 91204
For information, call (818) 548-4098

Campers will have fun making crafts, playing sports and games, competing in contests and making new friends. Campers must provide their own lunch, drink, and snacks daily.

Ages: 6 - 14 (Child must be 6 years old by the first day of camp.)

4-Day Camp

Dates: **Week 1:** Tuesday - Friday, December 27 - 30, 2022
(No camp on Monday, December 26, 2022)

Week 2: Tuesday - Friday, January 3 - 6, 2023
(No camp on Monday, January 2, 2023)

	<u>Glendale</u> <u>Resident Fees</u>	<u>Non-Resident Fees</u>	<u>Times</u>
Full Day	\$68/week/child	\$80/week/child	9:00 a.m. - 4:00 p.m.
Before Care	\$16/week/child	\$16/week/child	7:00 a.m. - 9:00 a.m.
After Care	\$16/week/child	\$16/week/child	4:00 p.m. - 6:00 p.m.



Day Camps - Winter

Sparr-Tacular Winter Camp

Sparr Heights Community Center

1613 Glencoe Way, Glendale, CA 91208

For information, call (818) 548-2187

It's time for Winter fun at Sparr Heights Community Center! Children ages 6-12 will enjoy games, crafts, and a special treat on Fridays. Children must bring a sack lunch each day of camp. Registration is on a weekly basis.

Ages: 6 -14 (Child must be 6 years old by the first day of camp.)

4-Day Camp

Week 1: Snow Much Fun Tuesday - Friday
December 27 - 30, 2022
(no camp on December 26, 2022)

Week 2: Winter Wonderland Tuesday - Friday
January 3 - 6, 2023
(no camp on January 2, 2023)

Fees:	<u>Glendale Resident</u>	<u>Non-Resident</u>	<u>Times</u>
	\$52/week/child	\$64/week/child	12:00 p.m. – 6:00 p.m.



Specialty Camps - Winter

Maximum Potential Basketball Winter Break Camp

Pacific Community Center

501 S. Pacific Ave., Glendale CA 91204

For information, call (818) 548-4098

Hoopapalooza is designed to help improve an individual's strength, knowledge, and overall development of basketball. Join this camp TODAY and you will be able to fulfill your aspirations. Learn the basics and advanced movements of the game. We will also cover dribbling, passing, shooting, and agility. All skill levels are welcome!!!

Mark Herring of Hoopapalooza Inc will be the instructor. Coach Herring is a native of North Carolina and has worked with the likes of Coach Krzyzewski ("Coach K", Duke University's Men's Basketball Team), Carmelo Anthony, Kobe Bryant and other NBA Stars. COME JOIN THE FUN!!!!

4-Day Camp

Dates: Tuesday - Friday, December 27 - 30, 2022 (no camp Monday, December 26, 2022)

Ages: 5 - 9

	<u>Number</u>	<u>Fee</u>	<u>Time</u>
Half Day	360804-01	\$100/week/child	9:00 a.m. - 1:00 p.m.
Before Care	362402-01	\$16/week/child	7:00 a.m. - 9:00 a.m.

4-Day Camp

Dates: Tuesday - Friday, January 3 - 6, 2023 (no camp Monday, January 2, 2023)

Ages: 9-16

	<u>Number</u>	<u>Fee</u>	<u>Time</u>
Full Day	360804-02	\$140/week/child	9:00 a.m. - 4:00 p.m.
Before Care	362402-01	\$ 16/week/child	7:00 a.m. - 9:00 a.m.
After Care	362403-01	\$ 16/week/child	4:00 p.m. - 6:00 p.m.

Evolution Basketball Holiday Camp

Verdugo Park (South End), on the Basketball Court

1621 Cañada Blvd., Glendale, CA 91208

Evolution Basketball teaches the fundamental movement skills and overall motor skills for basketball. The courses are designed to teach the fundamental concepts of basketball, dribbling and passing, shot techniques, spatial awareness, and teamwork. Levels are age-appropriate, and gradually increase children's ability to help them play the sport of basketball. A jersey is included for all participants.

3-Day Holiday Camp

Dates: Monday - Wednesday, December 26-28, 2022

FEE: \$99

<u>Number</u>	<u>Level/Ages</u>	<u>Times</u>
240806-01	Level 2 (5-7 years)	9:00 a.m. - 12:00 p.m.
240806-02	Level 3 (8-11 years)	9:00 a.m. - 12:00 p.m.

Events and programs may be cancelled due to L.A. County Department of Public Health protocols. For updates, visit www.glendale.ca.gov/LG.

Specialty Camps - Winter

Holiday Skate Camps

Verdugo Skate Park
1621 Cañada Blvd., Glendale, CA 91208

Join THE SKATESIDE for a holiday camp over Thanksgiving week, and throughout winter break! This is a skateboard skill-focused camp that brings you everything you love about skateboarding. Learn how to shred the Verdugo Skate Park, and learn basic skateboard skills or take your skills to the next level. Great for beginners just starting, and skaters who want to advance past intermediate. Helmet, elbow pads, knee pads, and wrist guards are required to participate. All LA County Department of Public Health protocols for COVID-19 safety will be enforced.



Veteran's Day Camp: 1-Day Camp

Dates: Friday, November 11, 2022

Ages: 5-16

Number

291305-03

Fee

\$135/child

Time

9:00 a.m. - 12:50 p.m.

Thanksgiving Camp: 3-Day Camp

Dates: Monday - Wednesday, November 21-23, 2022

Ages: 5-16

Number

291305-02

Fee

\$302/child

Time

9:00 a.m. - 12:50 p.m.

Winter Camp: 5-Day Camp

Dates: Monday - Friday, December 26, 2022 - January 6, 2023

Ages: 5-16

Week

Number

Fee

Time

Week 1: December 26-30

391305-01

\$469/week/child

9:00 a.m. - 12:50 p.m.

Week 2: January 2-6

391305-02

\$469/week/child

9:00 a.m. - 12:50 p.m.

Day Camps - Spring

Kool Dayz Spring Camp

Pacific Community Center

501 S. Pacific Ave., Glendale, CA 91204

For information, call (818) 548-4098

Kids will have fun making crafts, playing sports and games, competing in contests and making new friends. Campers must provide their own lunch, drink and snacks daily.

5-Day Camp

Dates: Monday - Friday, March 13 - 17, 2023

Ages: 6-12

	<u>Glendale</u> <u>Resident Fees</u>	<u>Non-Resident Fees</u>	<u>Times</u>
Full Day	\$85/week/child	\$100/week/child	9:00 a.m. - 4:00 p.m.
Before Care	\$20/week/child	\$20/week/child	7:00 a.m. - 9:00 a.m.
After Care	\$20/week/child	\$20/week/child	4:00 p.m. - 6:00 p.m.



Events and programs may be cancelled due to L.A. County Department of Public Health protocols. For updates, visit www.glendale.ca.gov/LG.

Day Camps - Spring

Travelin' Teens Spring Camp

Pacific Community Center

501 S. Pacific Ave., Glendale, CA 91204

For information, call (818) 548-4098

Teen campers will explore fun Glendale locations and surrounding communities by foot or using local bus lines. Teens will make new friends, go on a field trip, and chill with other teens. Campers must provide their own lunch, drink, and snacks daily.

5-Day Camp

Dates: Monday - Friday, March 13 - 17, 2023

Ages: 12-14

	<u>Glendale</u> <u>Resident Fees</u>	<u>Non-Resident Fees</u>	<u>Times</u>
Full Day	\$85/week/child	\$100/week/child	9:00 a.m. - 4:00 p.m.
Before Care	\$20/week/child	\$20/week/child	7:00 a.m. - 9:00 a.m.
After Care	\$20/week/child	\$20/week/child	4:00 p.m. - 6:00 p.m.



Sparr-Tacular Spring Camp

Sparr Heights Community Center

1613 Glencoe Way, Glendale, CA 91208

For information, call (818) 548-2187

Flowers are blooming and Spring Break fun is here at the Sparr Heights Community Center! Children ages 6 - 12 will enjoy games, crafts, and a special treat on Friday. Children must bring a sack lunch Monday through Thursday.

5-Day Camp

Dates: Monday - Friday, March 13- 17, 2023

Ages: 6-12

	<u>Glendale</u> <u>Resident Fees</u>	<u>Non-Resident Fees</u>	<u>Times</u>
Half Day	\$65/week/child	\$80/week/child	12:00 p.m. - 6:00 p.m.

Specialty Camps - Spring

Spring Skate Camps

Verdugo Skate Park

1621 Cañada Blvd., Glendale, CA 91208

Join THE SKATESIDE for spring camp this spring! This is a skateboard skill-focused camp that brings you everything you love about skateboarding. Learn how to shred the Verdugo Skate Park, and learn basic skateboard skills or take your skills to the next level. Great for beginners just starting, and skaters who want to advance past intermediate. Helmet, elbow pads, knee pads, and wrist guards are required to participate. All LA County Department of Public Health protocols for COVID-19 safety will be enforced.

1-Day Camps

Ages: 5-16

<u>Dates</u>	<u>Fee</u>	<u>Time</u>
Camp 1: March 20	\$135/child	9:00 a.m. - 12:50 p.m.

Spring Break Camp: 5-Day Camp

Ages: 5-16

Dates: Monday - Friday, March 13-17, 2023

<u>Fee</u>	<u>Time</u>
\$469/week/child	9:00 a.m. - 1:00 p.m.

Evolution Basketball Spring Break Camp

Verdugo Park (South End), on the Basketball Court

1621 Cañada Blvd., Glendale, CA 91208

Evolution Basketball teaches the fundamental movement skills and overall motor skills for basketball. The courses are designed to teach the fundamental concepts of basketball, dribbling and passing, shot techniques, spatial awareness, and teamwork. Levels are age-appropriate, and gradually increase children's ability to help them play the sport of basketball. A jersey is included for all participants.

5-Day Spring Break Camp

Dates: Monday - Friday, March 13 - 17, 2023

FEE: \$99

<u>Number</u>	<u>Level/Ages</u>	<u>Times</u>
340806-01	Level 2 (5-7 years)	9:00 a.m. - 12:00 p.m.
340806-02	Level 3 (8-11 years)	9:00 a.m. - 11:00 a.m.



Youth & Family Services



YOUTH & FAMILY SERVICES PROGRAM

Pacific Community Center, 501 S. Pacific Ave., Glendale, CA 91204

Hours: Monday - Friday, 9:00 a.m. - 6:00 p.m.

For more information, contact John Maghaguian, (818) 937-7247 | jmaghaguian@glendaleca.gov.

The Youth & Family Services Program is designed to provide free information and referral services to at-risk youth and their families. The program supports the family unit by providing guidance in decision-making and by connecting individuals to supportive services in the community.

Eligibility for Programs:

Youth 13 - 17 years of age and young adults 18 - 21.

No income or residency requirements.

Self-referrals and referrals from local agencies are accepted.

Youth Case Management:

Information & referral, utility assistance, connecting individuals to community providers regarding a variety of social issues which include, but are not limited to: employment, community service, health & wellness, housing/unstable living situations, and legal matters.

Juvenile Ultimatum Service Training (J.U.S.T.):

A service component that provides youth the opportunity to complete mandated community service hours through a balanced and restorative justice, community service learning, community protection and competency development process.

Youth & Family Services

Instagram



Follow us on Instagram @MyGlendaleTeens

Follow us on Instagram to find out the latest information on volunteer and job opportunities, special events, educational workshops, and places for teens to hang out!

You can also receive the latest updates on the City of Glendale by following @MyGlendaleTeens.

For more information, contact:

John Maghaguian

(818) 937-7247 | jmaghaguian@glendaleca.gov

Do You Want to Earn Community Service Hours for School and Become a Teen Volunteer?

1. Are you at least 14 years old?
2. Can you commit to 50 hours per year?
3. Do you have one of the following forms of identification?
 - ◆ California Driver License
 - ◆ California Identification Card
 - ◆ U.S. Passport
 - ◆ Military Identification Card
 - ◆ Green Card
4. Can you volunteer on weekends?

If you answered yes to all of these questions, please contact John Maghaguian at (818) 937-7247 or jmaghaguian@glendaleca.gov.



Youth & Family Services



Community Services
& Parks



YOUTH & FAMILY SERVICES PRESENTS:

TEEN NIGHT OUT

5:00 P.M. – 9:00 P.M.

For ages 13 -18

FREE SNACKS, REFRESHMENTS & PRIZES

**HANG OUT WITH YOUTH & FAMILY SERVICES
EVERY FRIDAY NIGHT, AND ENJOY PING PONG,
PS 4, POOL, AND KARAOKE.**

LOCATION AND DATES

**PACIFIC COMMUNITY CENTER
501 S. PACIFIC AVE.
GLENDALE, CA 91204**

DECEMBER 2, 9, 16, 2022

JANUARY 13, 20, 27, 2023

FEBRUARY 3, 10, 17, 24, 2023



To register or for more information, call or email Community Services Supervisor,
John Maghaguan, at (818) 937-7247 or jmaghaguan@glendaleca.gov.



Follow us @MyGlendaleTeens or #MyGlendaleTeens

Events and programs may be cancelled due to L.A. County Department of Public Health protocols. For updates, visit www.glendaleca.gov/LG.

Drop-In Programs

Therapeutic Recreation

Maple Park Community Center, 820 E. Maple St., Glendale, CA 91205
For program information, please call (818) 548-3783.

Get Fit

Get Fit is a free program designed to improve the health status of adults with intellectual disabilities by focusing on nutrition, healthy meal planning, monthly weigh-ins and measurements, stretching and conditioning. Activities are age and skill appropriate.

Ages: 18 and older
Day: Mondays
Time: 5:00 p.m. - 6:30 p.m.

Club Maple

Club Maple is a free program open to adults with intellectual disabilities which provides an opportunity for individuals to experience positive, healthy, recreational, cultural, educational, and social experiences. Activities are age and skill appropriate.

Ages: 18 and older
Day: Thursdays
Time: 5:30 p.m. - 8:00 p.m.

Maple Inclusive Play Day

Maple Inclusive Play Day (MIP Day) creates an opportunity for families with children of all abilities to come to the park, network with each other and allow their children to socialize, all centered around the new Shane's Inspiration all-inclusive playground. Crafts appropriate to all abilities will be available.

Day: Third Saturday of each month
Dates: December 17, 2022 | January 21, 2023 | February 18, 2023
Time: 11:00 a.m. - 1:00 p.m.



Drop-In Programs

Youth Programs

Tot Time

Tot time is a FREE drop-in program for preschoolers (ages 5 and under) and their parents. The center provides play equipment and toys while parents provide the supervision. No registration required.

Location: Maple Park Community Center, 820 E. Maple St., Glendale, CA 91205

Days: Mondays and Wednesdays

Time: 10:00 a.m. - 12:00 p.m.

For program information, please call (818) 548-3694.

Location: Pacific Community Center, 501 S. Pacific Ave., Glendale, CA 91204

Days: Tuesdays and Thursdays

Time: 10:00 a.m. - 12:00 p.m.

Pacific Park Library offers stories and crafts on Thursdays from 10:30 a.m. - 11:00 a.m.

For program information, please call (818) 548-4098.

Maple Park Recreation Club

The Maple Park Recreation Club is a free and fun drop-in program for children ages 8 to 17. Recreation Leaders provide general supervision and programming. Maple Park Community Center offers a recreation room with foosball, ping pong, and other gaming activities. There is a computer lab with internet and video games. There is also a full-court gymnasium which offers drop-in basketball for youth.

Location: Maple Park Community Center, 820 E. Maple St., Glendale, CA 91205

Days: Monday through Friday

Time: 2:30 p.m. - 5:00 p.m.

A responsible adult/guardian must accompany all children under eight (8) years of age. This program is designed to provide supplemental activities for your child and not to provide childcare.

For more information, please call (818) 548-3694.

Trails & Open Space Programs

INTERPRETIVE HIKES AND PROGRAMS

For information or to RSVP, please click on the links below or visit www.glendaleca.gov/trails.

Birdwalk on the Riverwalk
Glendale Narrows Riverwalk
300 Paula Avenue, Glendale, CA 91201
Saturday, December 3, 2022
8:00 a.m. - 10:00 a.m.

Join us for our annual bird watching trek along the Los Angeles River in the City of Glendale. This is a rare opportunity to spend time watching the birds that are on the river during the fall and winter months. Our leader for the morning is Kyle Gerber. Please bring your binoculars and camera to view and capture photos of our fine feathered friends. Participants are asked to wear sturdy shoes, protective clothing, long pants, hat and sun protection. Space is limited, please RSVP at www.glendaleca.gov/birdwalk beginning mid-November.

Holiday at the Old Stone Barn
Deukmejian Wildemess Park
3429 Markridge Road, Glendale, CA 91214
Saturday, December 17, 2022
5:30 p.m. – 7:30 p.m.

Join us for a family-friendly evening of holiday entertainment in the amphitheater of the Old Stone Barn in Deukmejian Wilderness Park. There will be singing and dancing and even a magician. Nights are chilly in the park, dress in layers and bring a blanket or a seat cushion. Hot chocolate and cookies will be served, while supplies last. Seating is limited, please RSVP at www.glendaleca.gov/holiday beginning mid November.

Friday Night Lecture, “CHiPs in La Crescenta”
Brand Studios in Brand Park
1601 West Mountain Street, Glendale, CA 91201
Friday, January 27, 2023
6:30 p.m. - 8:30 p.m.

Local filmmaker John Newcombe has compiled a narrated film about the half-century old TV series and its history of filming in La Crescenta. This will be an entertaining blast from Crescenta Valley's past. Please RSVP at www.glendaleca.gov/chips beginning mid-December.

Friday Night Lecture, “Eco-Gardening & Composting”
Stone Barn Nature Center
Deukmejian Wildemess Park
3429 Markridge Road, Glendale, CA 91214
Friday, February 24, 2023
6:30 p.m. - 8:30 p.m.

Growing an eco-garden isn't just great for the environment, it will produce a beautiful and productive garden. The Office of Sustainability's Elizabeth Harris is our speaker for the evening. Elizabeth will show us how to create a beautiful and productive eco-garden and reduce waste through composting for both backyard and small space gardeners. RSVP at www.glendaleca.gov/garden beginning mid-January.

“These Boots Are Made for Walking”, Night Hike
Deukmejian Wildemess Park
3429 Markridge Road, Glendale, CA 91214
Saturday, February 25, 2023
5:00 p.m. - 7:00 p.m.

Have you ever been to the Wilderness Park as the sun starts to set? Join us for a moderately difficult hike on the Mummy rock trail, the Le Mesnager Loop trail and the Vineyard trail as we learn all about the Wilderness Park when the sun goes down. Bring your flashlights (we have red covers), water and wear sturdy shoes. Space is limited, please RSVP at www.glendaleca.gov/hike beginning mid-January.

Trails & Open Space Programs

VOLUNTEER WORKDAYS

For information or to RSVP, please click on the links below or visit www.glendaleca.gov/trails.

RIVERWALK WORKDAYS

Glendale Narrows Riverwalk
Corner of Paula Avenue and Garden Street
Saturdays: November 12, 2022 | January 14, 2023
8:00 a.m. - 11:00 a.m.

Join us down by the riverside as we work to remove invasive plants from the landscaped areas along the L.A. River. Participants are asked to wear sturdy shoes, protective clothing, and bring a hat. We'll provide tools, gloves, drinks and snacks. Families, individuals, clubs, and students needing community service hours are welcome. Please RSVP by clicking on the date above or visiting www.glendaleca.gov/trails.

WILDERNESS WORKDAYS

Deukmejian Wilderness Park
3429 Markridge Road., Glendale, CA 91214
Saturdays: November 19, 2022 | January 21, 2023 | February 18, 2023
8:00 a.m. - 11:00 a.m.

Help us water our big cone spruce and live oaks, assist with trail repairs, and remove invasive plants from the park. Families, individuals, clubs and students needing community service hours are welcome. Please wear sturdy shoes, protective clothing and a hat. In case of rain, this event will be cancelled. Please RSVP by clicking on the date above or visiting www.glendaleca.gov/trails.

Lend a Hand at Brand

Brand Park
1601 West Mountain Street, Glendale, CA 91201
Saturday, February 4, 2023
8:00 a.m. - 11:00 a.m.

Please join us as we work to improve some of the neglected wilderness areas of Brand Park. Work may include trail maintenance, plant watering, and removal of invasive plants from the park. In case of rain this event will be cancelled. RSVP at www.glendaleca.gov/trails.

TRAIL SAFETY PATROL

Coming Soon!

Trail Safety Patrol Member Orientation
Brand Park/Studios
1601 West Mountain Street, Glendale, CA 91201

The Trail Safety Patrol (TSP) was launched in February 2013 with sixteen community volunteers operating in Hike and Mountain Bike units. The purpose of the TSP is to assist Community Services & Parks staff and other City professionals in protecting and maintaining the safety of park and open space visitors and resources; to educate park and open space visitors about resources, programs, and regulations; and to observe and report damage, unsafe conditions, and police, fire or medical emergencies. The program is a collaboration with the Glendale Police and Fire Departments.

We are actively seeking volunteers to help with the Restoration Program, Trail Safety Patrol, and Trail Maintenance Crew. For more information, email us at Trails@glendaleca.gov or call (818) 548-3795.

All Trails & Open Space programs are sponsored by the
[Glendale Parks & Open Space Foundation](http://www.glendaleca.gov/OSF).

To sign up for the Trails & Open Space Program newsletter, please visit www.glendaleca.gov/trails.

Events and programs may be cancelled due to L.A. County Department of Public Health protocols. For updates, visit www.glendaleca.gov/LG.

Stone Barn Nature Center Programs

For more information, call (818) 937-7428

Stone Barn Nature Center
Deukmejian Wilderness Park
3429 Markridge Road, Glendale, CA 91214

Hours of Operation

Fridays: 3:00 pm – 6:00 pm

Saturdays & Sundays: 9:00 am – 6:00 pm

Closed the following dates:

Friday, November 11, 2022

Thursday, November 24, 2022

Saturday, December 24, 2022

Sunday, December 25, 2022

Sunday, January 1, 2023

Saturday, February 4, 2023



The Stone Barn Nature Center is now open!

Entry is free and open to the public. The Stone

Barn was originally built between 1905-1915, by the Le Mesnager family. It was partially burned in the 1933 wildfire, but was rebuilt to the structure you see today. Throughout the years, it has served as a winery, stables, residence, and now a nature center. Visit the Stone Barn to learn about the local flora & fauna, the history of the land, and the winery that the Le Mesnager family operated. We will be hosting enriching workshops, day camps, and field trips for local schools. For more information, please visit www.glendaleca.gov/stonebarn or call (818) 937-7428.

Glendale Outdoors! (GO!) Community Program

Deukmejian Wilderness Park

3429 Markridge Road, Glendale, CA 91214

Saturdays: November 12, 2022 | December 10, 2022 | January 14, 2023 | February 18, 2023

9:00 a.m. - 12:00 p.m.

FREE

Spend some quality family time enjoying the great outdoors once a month! We invite the public to join us for an interpretive hike in Deukmejian Wilderness Park, a nature craft, nature themed games, and a tour of the Stone Barn Nature Center. We will provide water, snacks and bus transportation from Pacific Park Community Center, leaving at 8:30 am and returning at 12:30 pm.

Important information:

- Please arrive by 8:00 AM to check in with the staff.
- Free bus leaves from Pacific Community Center, 501 S. Pacific Ave., at 8:30 AM and returns at 12:30 PM
- Please wear sturdy shoes, long pants, and a hat or cap.
- Adult supervision is required! One adult for every three children 17 and under is required.
- For more information please call (818) 937-7428.

Each person planning to attend must RSVP, including children and adults, by clicking visiting www.glendaleca.gov/trails.

Verdugo Skate Park Programs



Verdugo Park
1621 Cañada Blvd.
(south end)
(818) 548-2786

FRIDAY NIGHT LIGHTS

Enjoy skateboard videos, snacks, music and fun, including a chance to win prizes! Free admission for youth. Dates and times are subject to change.

Date: December 16, 2022

Time: 5:30 p.m. - 8:00 p.m.



SKATE CLASSES

- ♦ All classes are monthly, and occur on the first 4 Saturdays of the month.

Beginning Youth Class

Fee: \$249 / month **Ages:** 5+ **Day:** Saturdays **Time:** 9:00 a.m. - 10:20 a.m.

Students will learn balance, using the skateboard for transportation, beginner tricks, safety, skate park etiquette. Helmet, elbow pads, knee pads, and wrist guards are required to participate.

Intermediate Youth Class

Fee: \$249 / month **Ages:** 5+ **Day:** Saturdays **Time:** 10:30 a.m. - 11:50 a.m.

Students will learn more advanced tricks and learn about skateboard style. Helmet, elbow pads, knee pads, and wrist guards are required to participate.

Beginning Adult Class

Fee: \$249 / month **Ages:** 17+ **Day:** Saturdays **Time:** 9:00 a.m. - 10:20 a.m.

Focusing on safety and skateboard fundamentals, this class is fantastic for beginners to learn how to ride a skateboard. Learn skateboard safety, balance, pushing, turning, and cool tricks. Helmet, elbow pads, knee pads, and wrist guards are required to participate.

Please check our website at www.myglendaleparks.com (keyword search "skate") for more information. You can register online as classes become available.

Verdugo Skate Park Programs

VERDUGO SKATE PARK

Verdugo Park (south end)
1621 Cañada Blvd.
Glendale, CA 91208
(818) 548-2786

HOURS OF OPERATION:

November 1, 2022 - February 28, 2023

Monday – Friday: 3:00 p.m. - 8:00 p.m. (for all ages)
Saturday: 12:00 p.m. - 8:00 p.m. (for all ages)
Sunday: 10:00 a.m. - 12:00 p.m. (14 & under*)
12:00 p.m. - 8:00 p.m. (for all ages)

**From 10:00 a.m.-12:00 p.m. on Sundays, parents may skate with their children for instructional purposes. This is at the safety discretion of skate staff.*



FEES:

	Youth (17 & Under) & Resident Adults (18 & Over)	Non-Resident Adults (18 & Over)
Daily Entry	Free	\$ 4
Monthly Pass	N/A	\$40
Annual Pass	N/A	\$75

FEATURES:

15,000 square foot concrete facility: 6 - 9 foot Clover Bowl with 11 foot Over-Vert section, 6 - 10 foot Kidney Pool, Street Plaza with rails and ledges, and a Snake Run that empties into a 9 foot bowl with a Loveseat.

ALL PERSONS ENTERING THE PARK MUST WEAR A HELMET, KNEE PADS AND ELBOW PADS.

All skaters must have a valid release of liability form on file.
(Youth ages 17 and under are required to have parent/guardian signature.)

BMX bikes, scooters or other coasting devices are NOT permitted.

Follow us on Instagram @verdugoskatepark

Aquatics

CITY OF GLENDALE'S

PACIFIC COMMUNITY POOL IS OPEN YEAR ROUND



Pacific Community Pool

509 S. Pacific Ave.
Glendale, CA 91204

(818) 937-7433
www.GlendaleAquatics.com

**Join us for lessons,
team sports, private
rentals and recreation
& lap swim.**

Contract Class Information

WINTER 2023 SESSION DATES

Enrollment begins: October 31, 2022

Classes begin: January 9, 2023

Last day to enroll for open classes: January 21, 2023

(Classes that do not meet the minimum number of students may be cancelled.)

See next page for Registration Information, or call (818) 548-2184.

CLASS LOCATIONS

Adult Recreation Center (ARC)

Central Park Complex
201 E. Colorado St.
Glendale, CA 91205

Brand Studios

1601 W. Mountain St.
Glendale, CA 91201

Chevy Chase Library

3301 E. Chevy Chase Dr.
Glendale, CA 91206

Crescenta Valley High School

2900 Community Ave.
La Crescenta, CA 91214

Deukmejian Wilderness Park

3429 Markridge Rd.
Glendale, CA 91214

Dunsmore Community Building & Park

4700 Dunsmore Ave.
La Crescenta, CA 91214

Glendale Community College

1500 N. Verdugo Rd.
Glendale, CA 91208

Glendale Sports Complex

2200 Fern Lane
Glendale, CA 91208

Glorietta Park

2801 N. Verdugo Rd.
Glendale, CA 91208

Griffith Manor Community Building

1551 Flower St.
Glendale, CA 91201

Hoover High School

651 Glenwood Rd.
Glendale, CA 91202

Joe Bridges Clubhouse

(In Glenoaks Park)
2531 E. Glenoaks Blvd.
Glendale, CA 91206

Maple Park Community Center

820 E. Maple
Glendale, CA 91205

Montrose Park

3529 Clifton Pl.
Glendale, CA 91208

Pacific Community Center & Pool

501 - 509 S. Pacific Ave.
Glendale, CA 91204

Scholl Canyon Golf & Tennis

3800 E. Glenoaks Blvd.
Glendale, CA 91206

Sparr Heights Community Center

1613 Glencoe Way
Glendale, CA 91208

Verdugo Skate Park

1621 Cañada Blvd.
(south end)
Glendale, CA 91208

Registration Information



www.myglendaleparks.com



Contact the Customer Service office at (818) 548-2184
Monday - Friday 8:30 a.m. - 5:00 p.m.

ONLINE REGISTRATION

Our online registration service allows you to register for activities through the internet **24 hours a day, 7 days a week**. Below you will find instructions that will help you establish a customer account, ID# and a password. Please read all the information online, especially sections regarding **residency and refunds**.

Step 1: Find our website: www.myglendaleparks.com.

Step 2: Log in with your credentials. If you have never logged in before, set up an online account. Be sure to add all of your family members. If you have forgotten your login credentials, please call (818) 548-2184 or email CSPcustomerservice@glendale.ca.gov.

Step 3: Browse activities. Click on Activity Search, and Search Activities.

Step 4: Select activities by clicking on the shopping cart icon.

Step 5: Pay for activities by clicking on shopping cart on the top right of your screen.

REGISTRATION REFUND POLICY

- Refunds are not available online.
- Contract classes or activities not reaching minimum numbers by the first week of classes may be cancelled and fees refunded. Service fees will not be refunded, in the event of class cancellation.
- Full refund, less an administrative fee, may be given if a refund is requested prior to start of programs/classes.
- Refunds requested after start of the program/class are contingent upon City approval and will only be considered through the conclusion of second week of scheduled class or second day of camp, and will be prorated.
- No refunds offered for Aquatics programs or classes.

For more information,
call (818) 548-2752 or (818) 548-2184.

REGISTRATION LOCATIONS:

Register for Classes & Camps at
any one of the following locations:

Civic Auditorium

(In person, phone, and online registrations will be accepted.)
1401 North Verdugo Rd., Glendale, 91208
(818) 548-2752 or (818) 548-2184

www.myglendaleparks.com

Adult Recreation Center Central Park Complex

201 E. Colorado St., Glendale, CA 91205
(818) 548-3775

Glendale Sports Complex

2200 Fern Lane, Glendale, CA 91208
(818) 548-6420

Maple Park Community Center

820 E. Maple St., Glendale, CA 91205
(818) 548-3783

Pacific Community Center & Pool

501-509 South Pacific Ave., Glendale, CA 91204
(818) 548-4098; (818) 937-7433

Sparr Heights Community Center

1613 Glencoe Way, Glendale, CA 91208
(818) 548-2187

Youth Classes

Youth Classes

HIP HOP FOR KIDZ

Hip Hop dance is here! Students will become confident by learning 5 dance styles including: Ballet, Hip Hop, Modern, Jazz, and Freestyle. We also play fun dancing games, and dance to the hottest music of today! Sign Up Now!

5 weeks **Fee: \$75** **Instructor: Talented Arts®**

<u>Ages</u>	<u>Number</u>	<u>Location</u>	<u>Begins</u>	<u>Day</u>	<u>Time</u>
5-10	330703-01	Griffith Manor	1/12	Th	6:00 p.m. - 7:00 p.m.



DRAWING AND PAINTING CLASS FOR ALL LEVELS

Learn drawing and painting techniques while learning about the Masters. Covering still life, landscapes, portraits, animals and compositional design. Students will use a variety of art media including acrylic paint. Please dress for art and be ready to learn, practice and create! **No class on 1/27 or 2/24 (Friday classes)**

\$20 materials fee is payable on the first day of class.

8 Weeks **Fee: \$100** **Instructor: Ann Marie Smith**

<u>Ages</u>	<u>Number</u>	<u>Location</u>	<u>Begins</u>	<u>Day</u>	<u>Time</u>
6 - 14	330501-05	Brand Studios	1/9	M	5:30 p.m. - 6:45 p.m.
6 - 14	330501-04	Brand Studios	1/13	Fri	5:30 p.m. - 6:45 p.m.



PARENT AND CHILD ART

Adult and child share creative time together using paint, paper, clay and found objects. Students will learn basic art techniques and vocabulary while painting, printmaking, clay making, creating collage and fantasy crafting. The instructor encourages freedom of expression and creativity. Classes also include games, songs, sharing books, story time, and show and tell. Class may be held outdoors.

\$10 material fee is payable on the first day of class.

7 weeks **Fee: \$75** **Instructor: Aleka Corwin**

<u>Ages</u>	<u>Number</u>	<u>Location</u>	<u>Begins</u>	<u>Day</u>	<u>Time</u>
2 - 5	230502-01	Brand Studios	1/12	Th	11:00 a.m. - 12:00 p.m.

Youth Classes

ART & DESIGN 4 KIDS!

Arts & crafts for kids is here! Students will participate in Fun creative art and crafting projects and activities! From painting, & Sketching to Sewing & Knitting, with over 30+ arts and crafts projects & activities, the possibilities are endless! kids will have a fun time designing their own beautiful creations while meeting new friends!

5 weeks **Fee: \$75** **Instructor: Talented Arts®**

<u>Ages</u>	<u>Number</u>	<u>Location</u>	<u>Begins</u>	<u>Day</u>	<u>Time</u>
6-12	330505-01	Griffith Manor	1/12	Th	4:00 p.m. - 5:00 p.m.

HOLLYWOOD SUPERSTARS!

Is your child a superstar in the making and loves to perform on stage? Introducing our new performing arts program, kids will learn to act, sing, and dance on stage! Students will learn fun acting games, sing songs, and even choreography. Your child will be taught to become a SUPERSTAR while gaining confidence to become a performer! Students will participate in our musical/play and perform in front of a live audience!

5 weeks **Fee: \$75** **Instructor: Talented Arts®**

<u>Ages</u>	<u>Number</u>	<u>Location</u>	<u>Begins</u>	<u>Day</u>	<u>Time</u>
6-12	330601-01	Griffith Manor	1/12	Th	5:00 p.m. - 6:00 p.m.



Youth Classes



DRAMA MANIACS

Do you have a creative young performer in your family? Give their budding creativity a place to blossom in our fun-filled, high-energy class! Students will learn about the wild world of DRAMA, including improvisation, musical theatre, mime, student-developed scenes, public speaking, and acting skills! This class is guaranteed to be fun and accessible for all levels of ability and experience. Join us for an exciting session of activities and help your child develop their confidence, creativity, and character with Drama Maniacs!

8 weeks

Fee: \$160

Instructor: Drama Maniacs

Ages

Number

Location

Begins

Day

Time

6-12

380601-01

Sparr Heights CC

1/19

Th

4:30 p.m. - 5:30 p.m.

3806CRAYOLA® ARTIST'S PASSPORT - TRAVEL THE WORLD THROUGH ART

Embark on an around-the-world cultural adventure – explore far-off places and learn about the people who live there, from the Americas to the Polynesia, from the cosmopolitan to the countryside. Experiment art techniques developed by local artists and artisans. Make a different masterpiece each day, including a dot art canvas, a mini Pakistani bus, a mud art painting on fabric, an imperial Russian egg and more! Bring the unique creations home and build a globally-inspired art gallery. **A \$65 lab fee is payable to the instructor on the first day of class.**

8 weeks

Fee: \$165

Instructor: Crayola® Imagine Arts Academy

Ages

Number

Location

Begins

Day

Time

5-12

380602-01

Sparr Heights CC

1/19

Th

4:30 p.m. - 5:30 p.m.

Youth Sports

Youth Sports

EVOLUTION BASKETBALL

Evolution Basketball teaches the fundamental movement skills and overall motor skills for basketball. The courses are designed to teach the fundamental concepts of basketball, dribbling and passing, shot techniques, spatial awareness, and teamwork. Levels are age-appropriate, and gradually increase children's ability to help them play the sport of basketball. A jersey is included for all participants.

LOCATION: Verdugo Park (South End), on the Basketball Court, 1621 Cañada Blvd., Glendale, CA 91208

5 WEEKS

FEE: \$105

Session 1: Fridays, February 10 - March 10, 2023

<u>Number</u>	<u>Level/Ages</u>	<u>Times</u>
340805-01	Level 1 (4-5 years)	3:00 p.m. – 3:30 p.m.
340805-02	Level 2 (5-7 years)	3:35 p.m. – 4:15 p.m.
340805-03	Level 3 (8-11 years)	4:15 p.m. – 5:00 p.m.

Session 2: Fridays, March 31 - April 28, 2023

<u>Number</u>	<u>Level/Ages</u>	<u>Times</u>
340805-04	Level 2 (5-7 years)	4:00 p.m. - 4:45 p.m.
340805-05	Level 3 (8-11 years)	4:45 p.m. - 5:30 p.m.
340805-06	Level 1 (4-5 years)	5:30 p.m. - 6:00 p.m.
340805-07	Level 2 (5-7 years)	6:05 p.m. - 6:50 p.m.



MAXIMUM POTENTIAL BASKETBALL

Hoopapalooza is designed to help improve an individual's strength, knowledge, and overall development of basketball. Join this class TODAY and you will be able to fulfill your aspirations. Learn the basics and advanced movements of the game. We will also cover dribbling, passing, shooting, and agility. ALL SKILL LEVELS ARE WELCOME!!!!

Mark Herring of Hoopapalooza Inc. will be the instructor. Coach Herring is a native of North Carolina and has worked with the likes of Coach Krzyzewski ("Coach K", Duke University's Men's Basketball Team), Kobe Bryant, Carmelo Anthony, and other NBA Stars. COME JOIN THE FUN!!!! **NO CLASS ON OCTOBER 6, 2022.**

6 WEEKS

Fee: \$200

Instructor: Mark Herring

<u>Ages</u>	<u>Number</u>	<u>Location</u>	<u>Begins</u>	<u>Day</u>	<u>Time</u>
5 - 9	360601-01	Pacific CC	1/19	Th	4:15 p.m. - 5:15 p.m.
8-16	360601-02	Pacific CC	1/19	Th	5:30 p.m. – 6:30 p.m.

Youth Sports

KIDZ LOVE SOCCER

WWW.KIDZLOVESOCCER.COM



This instructional soccer experience includes age appropriate activities, skill demonstrations, fun games, and instructional scrimmages conducted in a non-competitive, recreational format. This class is perfect for first time players while being fun and engaging for kids with some experience. **Shin guards are required.**

Excessive Heat and Rainout Hotline #: (888) 372-5803. Call this number up to 30 minutes prior to any scheduled class to verify class status. *If a class is cancelled due to weather and/or another City program, the class will be made up at the end of the session.*

7 WEEKS

FEE: \$143

All participants will receive a soccer jersey.

WEDNESDAY CLASS LOCATION: DAY/SESSION DATES:

Glorietta Park, 2801 N. Verdugo Rd., Glendale, CA 91208
Wednesdays, January 25 - March 8, 2023

<u>Number</u>	<u>Class Title</u>	<u>Age</u>	<u>Time</u>
341204-01	Soccer 2	7 - 10	3:30 p.m. – 4:15 p.m.
341203-01	Soccer 1	5 - 6	4:20 p.m. – 5:05 p.m.
341202-01	Tot/Pre-Soccer	3.5 - 5	5:10 p.m. – 5:45 p.m.

SATURDAY CLASS LOCATION: DAY/SESSION DATES:

Glorietta Park, 2801 N. Verdugo Rd., Glendale, CA 91208
Saturdays, January 28 - March 11, 2023

<u>Number</u>	<u>Class Title</u>	<u>Age</u>	<u>Time</u>
341201-02	Mommy/Daddy/Me	2 - 3.5	9:00 a.m. – 9:30 a.m.
341202-02	Tot Soccer	3.5 - 4	9:35 a.m. – 10:05 a.m.
341202-03	Pre Soccer	4 - 5	10:10 a.m. – 10:45 a.m.
341203-02	Soccer 1	5 - 6	10:50 a.m. – 11:35 a.m.
341204-02	Soccer 2	7 - 10	11:40 a.m. – 12:25 p.m.



Youth Sports

YOUTH TENNIS CLASSES ~ WINTER SESSION

Fit Fun Tennis – thetennisplace.net

Fit Fun Tennis is a community tennis program hosted by The Tennis Place, Inc. Our qualified instructors focus on the fundamentals of tennis with an emphasis on FUN! All of our classes teach tennis-specific movements and proper technique. You'll be challenged to improve at your own pace while getting a great workout and meeting other tennis players in the community.



8 WEEKS **FEE: 1-hr class \$220; 1.5-hr class \$285** **AGES: 7 - 18**

LOCATIONS: Montrose Park Tennis Court, 3529 Clifton Pl., Glendale, CA 91208
Emerald Isle Park Tennis Court, 2130 Lenore Dr., Glendale, CA 91206
Nibley Park Tennis Court, 1103 E. Mountain St., Glendale, CA 91207

SESSION DATES: Mondays, January 9 - February 27, 2023
Tuesdays, January 10 - February 28, 2023
Wednesdays, January 11 - March 1, 2023
Thursdays, January 12 - March 2, 2023
Saturdays, January 14 - March 4, 2023



SKILL LEVEL: BIG HITTERS (ages 7 – 9)

Number	Day of Week	Location	Time
341107-01	Mondays	Emerald Isle Park	3:30 p.m. – 4:30 p.m.
341107-02	Tuesdays	Montrose Park	3:30 p.m. – 4:30 p.m.
341107-03	Saturdays	Montrose Park	8:30 a.m. – 9:30 a.m.

SKILL LEVEL: JR. DEVELOPMENT I BEGINNER ages 10 – 12)

Number	Day of Week	Location	Time
341108-01	Mondays	Emerald Isle Park	4:30 p.m. – 5:30 p.m.
341108-02	Wednesdays	Nibley Park	3:30 p.m. – 4:30 p.m.
341108-03	Saturdays	Montrose Park	9:30 a.m. – 10:30 a.m.

SKILL LEVEL: JR. DEVELOPMENT I INTERMEDIATE (ages 10 - 12)

Number	Day of Week	Location	Time
341112-01	Wednesdays	Nibley Park	4:30 p.m. – 5:30 p.m.
341112-02	Saturdays	Montrose Park	10:30 a.m. – 11:30 a.m.

SKILL LEVEL: JR. DEVELOPMENT II BEGINNER (ages 13 - 18)

Number	Day of Week	Location	Time
341110-01	Tuesdays	Montrose Park	4:30 p.m. – 5:30 p.m.
341110-02	Thursdays	Montrose Park	4:30 p.m. – 5:30 p.m.

SKILL LEVEL: JR. DEVELOPMENT II INTERMEDIATE (ages 13 - 18)

Number	Day of Week	Location	Time
341111-01	Tuesdays	Montrose Park	5:30 p.m. – 6:30 p.m.
341111-02	Thursdays	Montrose Park	5:30 p.m. – 6:30 p.m.

SKILL LEVEL: JR. DEVELOPMENT II Advanced (ages 13-18)

Number	Day of Week	Location	Time
341109-01	Saturdays	Montrose Park	11:30 a.m. – 1:00 p.m.

Events and programs may be cancelled due to L.A. County Department of Public Health protocols. For updates, visit www.glendale.ca.gov/LG.

Youth Sports

BEGINNERS EDGE SPORTS TRAINING (BEST) CLASSES

For program information, call (818) 937-7440.

To register, call (818) 548-2184.



BEST 4-Sport Multi-Sport

(Soccer, Baseball/Softball, Basketball, and Track & Field)

The 4-sport program brings you multiple weeks of 4 fantastic sports. We will teach your player how to kick and control a soccer ball, how to hit, catch, throw and run the bases, basketball handling, dribbling, passing and shooting, and track and field exercises. Our goal and focus is to maintain an energetic & highly active program that will teach, encourage and advance your young players, regardless of their skill level. Please bring an age-appropriate soccer ball for the first week. A hitting tee is needed later in the camp, as well as your own basketball. All other equipment will be provided.

LOCATION: Verdugo Park (South End), Next to the Basketball Court
1621 Cañada Blvd., Glendale, CA 91208

6 WEEKS

FEE: \$105

Session 1: Saturdays January 14 - February 18, 2023

<u>Section</u>	<u>Ages</u>	<u>Times</u>
340801-01	2 - 4	8:30 a.m. – 9:15 a.m.
340801-02	4 – 7	9:20 a.m. – 10:05 a.m.
340801-03	2 – 4	10:10 a.m. – 10:55 a.m.
340801-04	3 – 6	11:00 a.m. – 11:45 a.m.

Session 2: Sundays January 15 - February 19, 2023

<u>Section</u>	<u>Ages</u>	<u>Times</u>
340802-01	3 - 6	8:30 a.m. – 9:15 a.m.
340802-02	4 – 7	9:20 a.m. – 10:05 a.m.
340802-03	2 – 4	10:10 a.m. – 10:55 a.m.
340802-04	7 – 10	11:00 a.m. – 11:45 a.m.

Session 3: Saturdays February 25 - April 1, 2023

<u>Section</u>	<u>Ages</u>	<u>Times</u>
340803-01	2 - 4	8:30 a.m. – 9:15 a.m.
340803-02	4 – 7	9:20 a.m. – 10:05 a.m.
340803-03	2 – 4	10:10 a.m. – 10:55 a.m.
340803-04	3 – 6	11:00 a.m. – 11:45 a.m.

Session 4: Sundays February 26 - April 2, 2023

<u>Section</u>	<u>Ages</u>	<u>Times</u>
340804-01	3 - 6	8:30 a.m. – 9:15 a.m.
340804-02	4 – 7	9:20 a.m. – 10:05 a.m.
340804-03	2 – 4	10:10 a.m. – 10:55 a.m.
340804-04	7 – 10	11:00 a.m. – 11:45 a.m.

Adult Classes

Adult Fitness/Wellness & Dance

AIKIDO

Aikido is a peaceful, yet powerful Japanese martial art. This class is designed to teach students how to use an opponent's energy to gain control of a situation using beautiful and circular techniques. Great emphasis is placed on motion and the dynamics of movement.

10 Weeks

Fee: \$120

Instructor: Mark Adachi

Number

Location

Begins

Day

Time

360401-01

Pacific CC

1/9

M, Th
Sat

7:00 p.m. - 8:30 p.m.
10:00 a.m. - 11:30 a.m.



YOGA with Kneko Fruge, C-IAYT, E-RYT & Yoga Circle Downtown

Postures (Asanas) stretch, tone and strengthen the entire skeletal system, working not only the body's frame, but the internal organs, glands and nerves as well. These postures are linked via a connective movement (Vinyasa) and powerful breath work. These breathing exercises (pranayama) refresh and cleanse the body and help to control the mind. The union (yoga) of these two forces (Asana and Pranayama), release physical and mental tension, liberating vast resources of energy with increased mental power, clarity and concentration. This practice, over time, will bring your being into peak physical and mental condition.

10 Weeks

Fee: \$150

Instructor: Kneko Fruge

Number

Location

Begins

Day

Time

330303-01

Chevy Chase Library

1/14

Sat

9:00 a.m. - 10:00 a.m.

Adult Classes

Adult Visual Arts

WATERCOLOR FRESH AND LOOSE

In this class, painters will explore breaking free of careful, timid techniques to create stronger, more effective visual statements. The emphasis will be toward fostering individual progress and developing each artist's unique voice. Participants of every skill or experience level are welcome. **No class on 2/24.**

8 Weeks	Fee: \$90	Instructor: John Byram		
<u>Number</u>	<u>Location</u>	<u>Begins</u>	<u>Day</u>	<u>Time</u>
330102-01	Brand Studios	1/13	F	9:00 a.m. - 12:00 p.m.
330102-02	Brand Studios	1/13	F	1:00 p.m. - 4:00 p.m.



MIXED MEDIA (Open Studio)

This open studio class will allow participants to develop new visions and explore new methods by using water mediums such as gesso ink, acrylic, and pastels. There is no instructor for this class, and students can share experience and tips with each other.

8 Weeks	Fee: \$65	No Instructor		
<u>Number</u>	<u>Location</u>	<u>Begins</u>	<u>Day</u>	<u>Time</u>
330103-01	Brand Studios	1/9	M	10:00 a.m. - 1:00 p.m.



Adult Sports

Adult Sports

For program information, call (818) 937-7440.
To register, call (818) 548-2184.



ADULT TENNIS CLASSES ~ WINTER SCHEDULE!

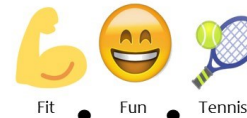
Fit Fun Tennis – thetennisplace.net

Fit Fun Tennis is a community tennis program hosted by The Tennis Place, Inc. Our qualified instructors focus on the fundamentals of tennis with an emphasis on Fun! All of our classes teach tennis specific movements and proper technique. You'll be challenged to improve at your own pace while getting a great workout and meeting other tennis players in the community.

8 WEEKS **FEE: 1-hr class \$220; 1.5-hr class \$285** **AGES: 18+**

LOCATIONS: Montrose Park Tennis Court, 3529 Clifton Pl., Glendale, CA 91208
Oakmont View Park Tennis Court, 2940 Oakmont View Dr., Glendale, CA 91208

SESSION DATES: Tuesdays, January 10 - February 28, 2023
Wednesdays, January 11 - March 1, 2023
Thursdays, January 12 - March 2, 2023
Saturdays, January 14 - March 4, 2023



SKILL LEVEL: ADULT BEGINNER - INTRO TO TENNIS

Number	Day of Week	Location	Time
341003-01	Mondays	Montrose Park	8:30 a.m. – 9:30 a.m.
341003-02	Wednesdays	Oakmont View Park	6:30 p.m. – 7:30 p.m.
341003-03	Saturdays	Oakmont View Park	8:00 a.m. – 9:00 a.m.

SKILL LEVEL: ADULT ADVANCED BEGINNER - INTERMEDIATE

Number	Day of Week	Location	Time
341004-01	Mondays	Oakmont View Park	6:30 p.m. – 7:30 p.m.
341004-02	Tuesdays	Montrose Park	9:30 a.m. – 10:30 a.m.
341004-03	Tuesdays	Montrose Park	6:30 p.m. – 7:30 p.m.
341004-04	Wednesdays	Oakmont View Park	7:30 p.m. – 8:30 p.m.
341004-05	Thursdays	Montrose Park	6:30 p.m. – 7:30 p.m.

SKILL LEVEL: ADULT ADVANCED INTERMEDIATE - ADVANCED

Number	Day of Week	Location	Time
341002-01	Mondays	Oakmont View Park	7:30 p.m. – 9:00 p.m.
341002-02	Tuesdays	Montrose Park	10:30 a.m. – 12:00 p.m.
341002-03	Tuesdays	Montrose Park	7:30 p.m. – 9:00 p.m.
341002-04	Thursdays	Montrose Park	7:30 p.m. – 9:00 p.m.

SKILL LEVEL: ADULT INTERMEDIATE – LIVE BALL

Number	Day of Week	Location	Time
341001-01	Saturdays	Oakmont View Park	9:00 a.m. – 10:30 a.m.

SKILL LEVEL: ADULT ADVANCED – LIVE BALL

Number	Day of Week	Location	Time
341000-01	Saturdays	Oakmont View Park	10:30 a.m. – 12:00 p.m.

Events and programs may be cancelled due to L.A. County Department of Public Health protocols. For updates, visit www.glendale.ca.gov/LG.

Adult Sports

Activity Card Fee Schedule:

Senior Activity Cards (60 years of age and older) **\$10/year**
Adult Activity Cards (18 - 59 years old) **\$25/year**

Cards may be purchased at one of the following locations:

- **Adult Recreation Center**, 201 E. Colorado St., Glendale, CA 91204
- **Glendale Sports Complex**, 2200 Fern Lane, Glendale, CA 91208
- **Maple Park Community Center**, 820 E. Maple St., Glendale, CA 91205
- **Pacific Community Center**, 501 S. Pacific Ave., Glendale, CA 91204
- **Sparr Heights Community Center**, 1613 Glencoe Way, Glendale, CA 91208

ADULT OPEN PLAY BADMINTON

Join a sport that gives you a great aerobic workout! All skill levels are invited to participate!



Location: **Pacific Community Center Gym**
501 S. Pacific Ave., Glendale, CA 91204

Fee: Free for Activity Card Holders (see fee schedule above)
\$2 for Non-Activity Card Holders

Days/Times: Fridays, 6:00 p.m. - 10:00 p.m.
Call the facility to check for closures: (818) 548-4098.

ADULT DROP-IN BASKETBALL

Open play basketball is available to adults of all skill levels in our gyms at Maple Park Community Center and Pacific Community Center. All skill levels are welcome to drop-in for a good workout by playing pickup games. **Ask for the drop-in calendar from the front desk to know when drop-in goes dark due to facility reservations and special events. Drop-in calendar is subject to change without notice. Please contact the Community Center for an up-to-date schedule.**

Fee: Free for Activity Card Holders (see fee schedule above)
\$2 for Non-Activity Card Holders

Location: **Maple Park Community Center**
820 E. Maple St. Glendale, CA 91205

Days/Times: Monday through Friday 4:00 p.m. - 5:00 p.m.
Saturday 9:00 a.m. - 5:00 p.m.

Location: **Pacific Community Center**
501 S. Pacific Ave. Glendale, CA 91204

Days/Times: Monday and Thursday 5:00 p.m. - 8:00 p.m.
Saturday 12:00 p.m. - 4:00 p.m.



Adult Sports

ADULT OPEN PLAY VOLLEYBALL

Location #1: Maple Park Community Center*
820 E. Maple St., Glendale, CA 91205

Fee: Free for Activity Card Holders (see fee schedule on page 50)
\$2 for Non-Activity Card Holders

Days/Times: Tuesdays, 6:00 p.m. - 9:00 p.m.
(Ask for the drop-in calendar at the front desk to know when drop-in goes dark due to private reservations or special event.)



LOCATION #2: Hoover High School (East Gym)*
651 Glendwood Rd., Glendale, CA 91202

Fee: No daily fee. Activity Card is required (see fee schedule on previous page.)

Days/Times: Mondays and Thursdays, 8:00 p.m. - 10:00 p.m.

Dates: September 12, 2022 - June 8, 2023
(Closed: 10/31/22, 11/21/22, 11/24/22, 12/26/22, 12/29/22, 1/2/23, 1/5/23, 1/16/23, 2/13/23, 2/16/23, 2/20/23, 3/13/23, 3/16/23, 3/20/23, 4/24/23, 5/29/23)
Dates are subject to Hoover High School availability.

*Release of liability form is due each calendar year. Maximum 42 person capacity per night. Teams will be established in groups of 6 based on the sign-in sheet.

MASTERS OPEN PLAY SOCCER (Ages 40+)

Get a healthy workout and meet new friends as you join other adult enthusiasts for casual pick-up games. This is a non-competitive, friendly play program. Pick-up games are available on Wednesday and Friday mornings.

Fee: Activity Card holders only. \$2 per player per day
(see fee schedule on the previous page)

Days/Time: Wednesdays and Fridays, 7:30 a.m. - 9:30 a.m.

Location: Glendale Sports Complex
2200 Fern Lane, Glendale, CA 91208



MASTERS OPEN PLAY SOCCER (Ages 60+)



The City offers casual pick-up soccer for adults over age 60 in both a walking and running format. Walking soccer is designed to get seniors on the field to stay physically active, but without the intensity of a regular game. The programs will be offered at different times to allow for safe and enjoyable games for both intensities.

Fee: Activity Card holders only. \$2 per player per day
(see fee schedule on the previous page)

Day/Time: Tuesdays and Thursdays, Walking Soccer 10:00 a.m. - 11:00 a.m.
Masters Soccer 11:00 a.m. - 1:00 p.m.

Location: Glendale Sports Complex
2200 Fern Lane, Glendale, CA 91208

GCC Senior Classes



SENIOR CLASSES

Sponsored by Glendale Community College

The City of Glendale, in partnership with Glendale Community College, is sponsoring several classes for seniors, ages 60+, FREE of charge.
For information or class registration, please call (818) 243-5196.

Please visit www.garfield.glendale.edu for a listing of all credit/no credit classes available through Glendale Community College Garfield Campus.

Next session begins mid-February.



Senior Classes & Activities

ALL CLASSES ARE ONGOING, YOU MAY REGISTER AT ANY TIME.

The classes listed below will be offered in-person AND online. You are welcome to join us in either format.

If you wish to participate online via Zoom, please email cspcares@glendaleca.gov. We will send you a meeting invitation, meeting ID and password.

In-person classes must follow all LA County Health Department protocols.

Locations:

Mondays, Wednesdays, and Fridays – Adult Recreation Center, 201 E. Colorado St., Glendale, CA 91205

Tuesdays and Thursdays – Sparr Heights Community Center, 1613 Glencoe Way, Glendale, CA 91208

Fee Schedule: \$1 per class, payable at the beginning of each class. Activity card holders only. (Card must be presented upon payment.)

Activity Card Fee:

Senior Activity Cards (60 years of age and older) \$10/year

Adult Activity Cards (18 - 59 years old) \$25/year

Single-Day Pass \$2/day

For ALL Classes Listed Below:

Zoom Meeting ID: 894 7893 4835 | Passcode: PMLB2022

**EFFECTIVE TUESDAY, JANUARY 3, 2023, ALL CLASSES LISTED BELOW
WILL BE CONDUCTED IN PERSON ONLY.**

Day	Class	Time	Location
Mondays	Aerobics	9:15 a.m. - 10:15 a.m.	ARC
	Slow Stretch	10:15 a.m. - 11:15 a.m.	ARC
	Absolute Beginner Line Dancing	11:15 a.m. - 12:15 p.m.	Pacific CC
	Beginner/Improver Line Dancing*	12:30 p.m. - 2:30 p.m.	Pacific CC
Tuesdays	Muscle Toning	10:00 a.m. - 11:00 a.m.	Sparr Heights CC
Thursdays	Aerobics	9:00 a.m. - 10:00 a.m.	Sparr Heights CC
	Slow Stretch	10:00 a.m. - 11:00 a.m.	Sparr Heights CC
Fridays	Muscle Toning	10:15 a.m. - 11:15 a.m.	ARC

* Activity Card Holders \$2 per class, payable at the beginning of each class.

Non-Activity Card Holders \$4 per class, payable at the beginning of each class.

Senior Classes & Activities

Adult Recreation Center

ADULT RECREATION CENTER

201 E. Colorado St., Glendale, CA 91205
For more information, call (818) 548-3775.

AVAILABLE TO ACTIVITY CARD HOLDERS ONLY.

EXERCISE ROOM

The Adult Recreation Center offers a wide selection of fitness equipment including treadmills, cross-trainers, and stationary bikes along with numerous multifunction machines. Proper workout clothes and a towel are required.



An additional ARC Gym Membership is required.

Fee Schedule:

Senior Activity Cards (60 years of age and older)	\$10/year
Adult Activity Cards (18 - 59 years old)	\$25/year
Senior ARC Gym Membership	\$50/year plus an Activity Card
Adult ARC Gym Membership	\$80/year plus an Activity Card

Exercise Room Hours

Monday - Thursday	8:00 a.m. - 7:30 p.m.
Fridays & Saturdays	8:00 a.m. - 4:30 p.m.
Sundays	Closed

SENIOR MIXER

If you like to salsa, cha-cha, rumba, waltz or boogie, this is the place to be. The senior mixer is a great opportunity to socialize with fellow seniors in the greater community of Glendale, make new acquaintances and enjoy a good time. Please call the Adult Recreation Center for a list of specific activities that take place during the mixer.

Location: Adult Recreation Center, Dining Hall

Days/Time: Thursdays, 3:00 p.m. - 6:00 p.m.

Fee: Participants must have a valid/current activity card on file. A single day pass may be purchased for \$2.00 per person.



* A suggested donation of \$3.00 is collected at the entrance to the mixer. This is a gratuity that is given to the DJ at the end of each event.

Participants must follow all L.A. County Department of Public Health protocols.

Senior Classes & Activities

Adult Recreation Center

ADULT RECREATION CENTER

ALL OF THE FOLLOWING ACTIVITIES ARE AVAILABLE TO ACTIVITY CARD HOLDERS ONLY.
For more information, please call (818) 548-3775.

ARC BRIDGE CLUB



Millions of people play bridge worldwide. Bridge is a trick-taking game using a standard deck played by four players.

Days/Time: Mondays 1:30 p.m. - 4:00 p.m.
Thursdays 11:30 a.m. - 4:30 p.m.
Location: Multi-Purpose Room B

DROP-IN BILLIARDS, BACKGAMMON, CHESS, AND DOMINOS



You can drop in Monday through Saturday to play some billiards, backgammon, chess or dominos. **Hours may change based on room availability.**

Days/Time: Mondays – Thursdays 8:00 a.m. - 7:30 p.m.
Fridays and Saturdays 8:00 a.m. - 4:30 p.m.
Location: Multi-Purpose Room A

BINGO



Make new friends while playing this timeless classic.

Activity Card Holders: \$1 for 2 cards; Non Activity Card Holders: \$2 for 2 cards.

Days/Time: Fridays 10:00 a.m. - 11:00 a.m.
Location: Multi-Purpose Room A

KNIT & CHAT



Bring your yarn and needles to knit and chat with your friends about various topics. Show off your skills, and teach each other new methods!

Days/Time: Tuesdays & Fridays 9:00 a.m. - 11:00 a.m.
Location: TV Lounge

SENIOR CHAT GROUP



Come join us as we discuss various topics related to your everyday life and challenges

Days/Time: First Tuesday of Every Month 10:00 a.m. - 11:00 a.m.
Location: Multi-Purpose Room B

Senior Classes & Activities

Pacific Community Center

PACIFIC COMMUNITY CENTER

501 S. Pacific Ave, Glendale 91204, Glendale, CA 91204

For more information, call (818) 548-4098.

Activity Card Fee:

Senior Activity Cards (60 years of age and older)	\$10/year
Adult Activity Cards (18 - 59 years old)	\$25/year
Single Day Pass	\$ 2 /day

.....

DROP-IN BILLIARDS

You can drop in Monday through Saturday to play some billiards. **Hours may change based on room availability.**

Days/Time: Mondays – Thursdays, 9:00 a.m. - 8:30 p.m.
Fridays & Saturdays, 9:00 a.m. - 4:30 p.m.

Location: Recreation Room

CONTEMPORARY WORLD ISSUES

Join your peers every Tuesday to discuss various current affairs at the local, state, and national level as well as news and events that take place abroad. The weekly meet-up is an opportunity to ask questions, express your thoughts and opinions about topics, and see what others think.

Days/Time: Tuesdays, 10:00 a.m. - 12:00 p.m.

Location: Red Bud Room

PICKLEBALL

Come out and try this fun sport, make some friends and see what everyone is talking about.

- ◇ All Levels and Ages Welcome
- ◇ Coaching Available for Beginners
- ◇ Paddles Available

3 Outdoor Courts

Monday - Saturday 9:00 a.m. - 12:00 p.m.

Pickleball for Parkinson's

Tuesdays and Thursdays 6:00 p.m. - 9:00 p.m.

Fridays 9:00 a.m. - 12:00 p.m.

4 Indoor Courts

Tuesdays 5:30 p.m. - 8:00 p.m.



OPEN PLAY TABLE TENNIS

No matter what your skill level or how long it has been since you held a paddle, the time has come to play some ping pong. Make new friends and get a work out while having fun.

Days/Time:

Mondays, 3:00 p.m. - 5:00 p.m.

Thursdays, Fridays, and Saturdays, 1:00 p.m. - 4:30 p.m.

Fee: See Activity Card Fee schedule above.

Senior Classes & Activities

Sparr Heights Community Center

SPARR HEIGHTS COMMUNITY CENTER

1613 Glencoe Way, Glendale, CA 91208
For more information, call (818) 548-2187.

ALL OF THE FOLLOWING ACTIVITIES ARE AVAILABLE TO ACTIVITY CARD HOLDERS ONLY.

WOODCARVING CLASS

Bring your favorite tools, create a work of art, and enjoy the companionship of like-minded folks.

Day/Time: Fridays 10:00 a.m. - 11:00 a.m.

BRIDGE

Senior bridge players of all skill levels and experience can come to the center and participate in competitive bridge games.

Day/Time: Mondays 9:00 a.m. - 11:30 a.m.

BINGO

If you were born to yell, "BINGO!", come out and enjoy an exciting game of senior bingo for prizes and socialization.

Activity Card Holders: \$1 for 2 cards; Non Activity Card Holders: \$2 for 2 cards.

Day/Time: Wednesdays 12:30 p.m. - 1:30 p.m.



Senior Services

Elderly Nutrition Program



**In person dining and Grab and Go available at the following meal sites:
Space is limited, please contact us at 818-548-3778 to make your reservation.**

Adult Recreation Center

201 E. Colorado St.
Glendale, CA 91205

Grab and Go
11:00a.m.-11:30a.m,
Monday-Sunday

In-Door Dining
12:30p.m.-1:30p.m. (M-F)

Sparr Heights Community Center

1613 Glencoe Way.
Glendale, CA 91208

Grab and Go
11:30a.m.-12:30p.m, (M-F)

In-Door Dining
12:30p.m.-1:30p.m. (M-F)

Pacific Community Center

501 S. Pacific Ave.
Glendale, CA 91204

In-Door Dining
12:30p.m.-1:30p.m. (M,W,F)

***Starting July 1, 2022, all new and returning clients must fill out a 2022-2023 Universal Intake Form before receiving meals.**

Events and programs may be cancelled due to L.A. County Department of Public Health protocols. For updates, visit www.glendale.ca.gov/LG.

Senior Services



CASE MANAGEMENT

The Case Management program for seniors is designed to meet the special needs of frail individuals who may be experiencing difficulty in maintaining independent living arrangements.

For Information & Referral Services, please call: (818) 548-3772
Spanish Language Case Manager: (818) 548-2801

Transportation Services and Bus Pass Sales:

Transportation services include Dial-A-Ride, by reservation, and MTA bus passes, sold at the Adult Recreation Center, Sparr Heights Community Center and Pacific Community Center all month long.

The Metro bus pass for seniors is not honored by the Beeline.

For more information about the Access Paratransit Program for disabled seniors, call (818) 548-3775 or (818) 548-2187.

Health Insurance Counseling and Advocacy Program (HICAP):

The state-registered Health Insurance Counseling and Advocacy Program (HICAP) Volunteer Counselors provide unbiased information, counseling and assistance on Medicare and related health care coverage,

- ◆ Original Medicare (Parts A & B)
- ◆ Medicare Prevention Services
- ◆ Medicare Part D (Prescription Drug Benefit)
- ◆ "Extra Help" with Medicare Part D
- ◆ Medicare Advantage: HMO'S & PPO
- ◆ Medicare Supplement (Medigap) Insurance
- ◆ Medi-Cal & Medicare Savings Programs
- ◆ Long-Term Care

including:

Contact the Adult Recreation Center at (818) 548-3775 for more information.

Legal Aid - Provided by the Armenian Bar Association:

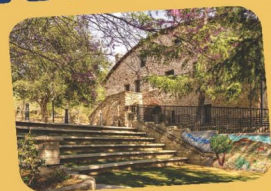
Assistance with legal questions and legal documents.

Office Hours: Tuesdays & Thursdays 1:00 p.m. - 5:00 p.m.
Wednesdays 9:00 a.m. - 2:00 p.m.
Saturdays 10:00 a.m. - 12:00 p.m.

Walk-Ins welcome, or an appointment can be made at (818) 937-3151 or at ProBono@ArmenianBar.org.

Events and programs may be cancelled due to L.A. County Department of Public Health protocols. For updates, visit www.glendale.ca.gov/LG.

Filming in Parks & Community Buildings



FILMING IN PARKS & COMMUNITY BUILDINGS

Film Permits Process

Looking for a great place to host your next filming project? The City of Glendale Community Services & Parks Department welcomes filming in parks and community buildings! Our parks and locations can accommodate: Feature Films, Commercials, Music Videos, Public Service Announcements, Still Photos Shoots, Reality TV Series, Documentaries, Director's Reels, Student Films.

Film Permits Include:

- Reserved site
- Professional Site Host onsite to ensure film crew has access to reserved site
- Well-maintained locations that are clean and ready for set dressing if applicable

Previous Film Projects Include:

- Criminal Minds TV Series
- "Moneyball"
- "Downsizing"
- Glad Commercials
- Bones TV Series
- Music Videos
- Various other projects

Requesting a Film Permit

Contact Matt Acosta: (818) 937-7426 or macosta@glendaleca.gov

1. Complete a Parks Film Permit Application, and verify park/facility availability with Matt Acosta. The application can be downloaded at www.glendaleca.gov/parksfilming.
2. Once your Parks site is approved, submit a FilmLA application at <http://my.filmLA.com>.
3. A site meeting may be scheduled in conjunction with the Application.
4. Make payment in full to City of Glendale, and receive your Parks Film Permit.
5. Make payment in full to FilmLA, and receive your FilmLA Permit.

Tours of Historic Facilities

FOR RESERVATIONS, PLEASE CALL
COMMUNITY SERVICES & PARKS AT (818) 548-2184
FOR TOUR INFORMATION, PLEASE CALL THE DOCENTS
AT THE VARIOUS SITES

"Shoseian" Whispering Pine Teahouse & Friendship Garden



Inside Brand Park
1601 West Mountain Street, Glendale, CA 91201
(310) 849-5432

HOURS OF OPERATION

Friendship Garden: Mon - Thur, 10:00 a.m. - 3:00 p.m.

Teahouse Events/Programs: Third Sunday of the month. Go to www.glendaleteahouse.org for event details.

Docent: Friends of Shoseian

FACILITY DESCRIPTION

- The traditional teahouse was built in 1974 through the combined efforts of the Sister Cities of Glendale and Higashi-Osaka, Japan. It is one of the few traditional Japanese Teahouses open to the public in the United States.
- The Teahouse, which was designed by architect Hayahiko Takase, is a unique blending of western and eastern design and an apt expression of the spirit of cross-cultural community.
- Nestled at the foot of the Verdugo Mountains beside a koi pond in a charming Japanese-style garden setting, the Teahouse is in a unique position to outreach to the community of Glendale and greater Los Angeles.

HISTORY

- The Teahouse represents the spirit of goodwill, lasting peace and friendship between the people of Japan and the United States.
- Given the name "Shoseian" or "Whispering Pine Teahouse" by Genshitsu Sen, the Fifteenth Grand Tea Master of the Urasenke School of Tea in Japan, the Teahouse is designated an official Tearoom. Dr. Yamazaki of Higashi-Osaka provided initial support for the Teahouse and Gardens.
- Through recent cooperative efforts by the City of Glendale and Friends of Shoseian, the Teahouse was refurbished and designated as Glendale Register of Historic Resources #46.

Doctors House Museum & Gazebo

Inside Brand Park
1601 West Mountain Street, Glendale, CA 91201
(818) 242-7447
Go to <https://glendalehistorical.org/museum-tours> for more details on upcoming events.

HOURS OF OPERATION

Guided Tours: Sundays 2:00 p.m. - 4:00 p.m.

No tours on holidays, and during inclement weather.

Docent: The Glendale Historical Society

Suggested Donation: \$10

FACILITY DESCRIPTION

- The Doctors House Museum is an authentically restored Queen Anne-Eastlake style home built around 1888.
- The Doctors House lawn area and gazebo are available for reservation for weddings and other special events.
- Smoking, barbecues, and amplified sound are NOT permitted because of the historic nature of the facility.

HISTORY

- The two-story house originally stood at 921 East Wilson Avenue in central Glendale, but was moved to its present location in 1980.
- Four early doctors owned it in succession, giving the house its name. It was later occupied by silent screen icon Nell Shipman and her family in the early 1900s.
- Threatened with demolition in 1979, community activists organized to save it and formally incorporated The Glendale Historical Society on October 24, 1979.
- The Glendale Historical Society dedicated the Doctors House to the City of Glendale on September 12, 1982, after spending thousands of volunteer hours on restoration.
- The Doctors House is registered as Glendale Register of Historic Resources #6.



Tours of Historic Facilities

Casa Adobe de San Rafael & Park



1330 Dorothy Drive, Glendale, CA 91202
glendalebeautiful@gmail.com
(818) 396-6840; www.glendalebeautiful.org

HOURS OF OPERATION

Daily 8:00 a.m. – Dusk

Guided Tours:

First Sunday of the Month, 1:00 p.m. - 3:00 p.m.

Suggested Donation: \$2

Docent: Glendale Beautiful

FACILITY DESCRIPTION

- The park is 1.6 acres in size.
- Amenities include a picnic pavilion which is available for small company or family picnics or gatherings, a turf area that is available for larger festival-type events, gas grill, sink, electrical outlets, and public restroom facilities.
- Smoking, barbecues, and amplified sound are NOT permitted because of the historic nature of the facility

HISTORY

- Casa Adobe de San Rafael is registered as California Landmark #235 and Glendale Register of Historic Resources #3.
- The Casa was built around 1870 by Tomas Sanchez, former sheriff of Los Angeles County, using adobe blocks to form the walls, which were then covered with stucco.
- In 1875, the property was sold, left abandoned, and fell into a ruinous state.
- In 1930 the Casa was purchased by the California Medicinal Wine Company who planned to tear down the structure and remove the large eucalyptus trees on the property. Local neighbors and community members stopped the demolition and began a campaign to preserve the house as a historic landmark.
- The City of Glendale purchased the adobe in 1930 and by 1932 La Casa de Adobe de San Rafael was completely refurbished.
- Today, the adobe includes a Monterey-style corridor (covered porch), beautiful sunken garden, brick patio, sandy brown tile roof, and long narrow front windows adorned with teal shutters. Interior furnishings are from the 19th century.

Catalina Verdugo Adobe

2211 Bonita Drive, Glendale, CA 91208
(818) 326-3575

HOURS OF OPERATION

Daily 8:00 a.m. - Dusk

Guided Tours: Scheduled Tours Only - Please call to schedule

Docent: Days of the Verdugos Heritage Association

FACILITY DESCRIPTION

- The park is 1.3 acres in size and is nestled at the base of the Verdugo Mountains in a residential neighborhood.
- Amenities include a walking trail, a garden, and a shaded picnic area with wooden tables, benches, and electric outlets.
- Smoking, barbecues, and amplified sound are NOT permitted because of the historic nature of the facility.

HISTORY

- The Catalina Verdugo Adobe is registered as California Historical Landmark #637 and Glendale Register of Historic Resources #1.
- The Adobe is the oldest structure in the City of Glendale. As with many early structures, the construction date of the Verdugo Adobe is uncertain. It is said the Adobe was built in 1828, but some research suggests that it dates to 1860. It was the home of Catalina Verdugo who, with her brother Julio, owned much of today's Northeast Glendale. Their father, Don Jose Maria Verdugo, was the original recipient of Rancho San Rafael, the Spanish land grant that encompassed large portions of Glendale, Burbank, and Eagle Rock.
- The grounds contain the remnants of the "Oak of Peace," under which a meeting was held in 1847 that led, a few days later, to the signing of the peace treaty, Treaty of Cahuenga, that ended the Mexican-American War.
- The Adobe originally consisted of the main room and the south wing. The north wing was added in the early 1900s, after it was sold to land developer F.P. Newport.
- In 1946, the property was sold to Dr. Ernest Bashor, and his family remained there until it was sold to the City of Glendale in 1989. It is fortunate that the historic value of the original house remained preserved.



Historic Buildings in Glendale Parks

STONE BARN NATURE CENTER



Deukmejian Wilderness Park

3429 Markridge Road, Glendale, CA 91214

Hours of Operation

Fridays: 3:00 p.m. – 6:00 p.m.

Saturdays & Sundays: 9:00 a.m.– 6:00 p.m.

Closed on the following dates:

11/11/22, 11/24/22, 12/24/22, 12/25/22, 1/1/23, and 2/4/23

The Stone Barn Nature Center is now open! Please stop by during our open hours of operation to tour the center and learn about the history of the Deukmejian Wilderness Park and the Barn. Entry is free!

The Stone Barn was originally built between 1905-1915, by the Le Mesnager family. Throughout the years, it has served as a winery, stables, residence, and now a nature center. It burned in the 1933 wildfire, but was rebuilt to the structure you see today.

Visit the nature center to learn about the history of the land by the Dunsmoor family, the winery that Georges Le Mesnager and his family operated, and the acquisition of the park by the City of Glendale.

From wildfires to wildlife, our backyard is full of exciting and amazing things. Join us to learn about tectonic movement that has created our mountains, the plants and bugs native to the hillsides, and the amazing creatures that roam in our own backyard.

For more information, please visit www.glendaleca.gov/stonebarn or call (818) 937-7428.

Events and programs may be cancelled due to L.A. County Department of Public Health protocols. For updates, visit www.glendaleca.gov/LG.

Historic Buildings in Glendale Parks

ADAMS SQUARE GAS STATION



Adams Square Mini Park

1936 Streamline Moderne Adams Square Gas Station (originally the Richfield Oil Gas Station) .

On December 8, 2015, the Glendale City Council approved official listing of the gas station on the Glendale Register of Historic Resources.

The 2015 landmark nomination, made by the City of Glendale's Historic Preservation Commission, was part of an initiative to facilitate formal designation of several significant City-owned properties. The Adams Square mini-park project was completed in 2007 by the City of Glendale in an effort to create a green space in the center of the local business district for the densely

populated Adams Hill neighborhood, and to incorporate the historic 1936 Streamline Moderne Gas Station.

ROCKHAVEN SANITARIUM

2713 Honolulu Avenue, Glendale, CA 91020

Rockhaven is a rare surviving example of the sanitariums that once flourished in the Crescenta Valley. First opened in 1923 by Agnes Richard as a “home for the feeble-minded women,” and later known as the “Screen

Actor's Sanitarium,” Rockhaven housed several Hollywood celebrities, such as Billie Burke, Flo Zigfield, Clark Gable's first wife, as well as Marilyn Monroe's mother. Over time, Agnes Richards purchased several neighboring Craftsman- style houses, and in the late 1920s and 1930s built several Spanish Colonial Revival style buildings which were designed specifically for the purpose of medical care and patient accommodations, expanding the facility to an approximately 3.5 acre site.

The character of this property was as much defined by its landscape as it was by its buildings. The buildings were, and still are, connected by meandering landscaped pathways, intimate gardens, patios, courtyards and expansive perimeter gardens to create a home-like setting for the individual care of the patients. In 1966, Rockhaven was awarded for its landscaping by Los Angeles Beautiful, Incorporated.

The City purchased the property in 2008 from Ararat Home, who had purchased the property in 2001 to operate a convalescent facility. The facility remains closed to the public at this time due to safety concerns.

You can read more about the facility by visiting the City's website, www.glendaleca.gov, and searching Rockhaven in the searchbar.



Facility Reservations

Adult Recreation Center

201 E. Colorado St.
Glendale, CA 91205
(818) 548-3775

Steps To Rent:

1. Complete and submit a Facilities Permit Application online at www.glendaleca.gov/reservations.
2. Upon confirmation of availability of the facility, staff will contact you with any follow up questions, and to discuss your permit.
3. Upon receiving your permit, make arrangements with staff to finalize all permit requirements, and make all applicable payments.
4. Two weeks prior to the event date, reach out to staff to discuss and finalize the plot plan, if applicable.

Indoor Spaces:

- Dining Hall, maximum capacity: 240
- Multi-Purpose Room, maximum capacity: 80
- Activity Room, maximum capacity: 15
- Full service kitchen available. *Must be reserved in conjunction with a room reservation. You must bring your own kitchen equipment including pots, pans, utensils, storage ware, etc.*

Outdoor Spaces:

- Upper Courtyard, maximum capacity: 24
- Lower Courtyard, maximum capacity: 56



Facility Reservations

Maple Park Community Center

820 E. Maple St.
Glendale, CA 91205
(818) 548-3783 or (818) 548-3694

Steps To Rent:

1. Complete and submit a Facilities Permit Application online at www.glendaleca.gov/reservations.
2. Upon confirmation of availability of the facility, staff will contact you with any follow up questions, and to discuss your permit.
3. Upon receiving your permit, make arrangements with staff to finalize all permit requirements, and make all applicable payments.
4. Two weeks prior to the event date, reach out to staff to discuss and finalize the plot plan, if applicable.

Indoor Spaces:

- Meeting Room 101, maximum capacity: 60
- Meeting Room 102, maximum capacity: 75
- Gymnasium, maximum capacity: 200
- Two Kitchenettes equipped with warming oven, microwave, and sink. *Must be reserved in conjunction with a room reservation. You must bring your own kitchen equipment including pots, pans, utensils, storage ware, etc.*

Outdoor Spaces:

- Terrace, maximum capacity: 20



Facility Reservations

Pacific Park and Community Center

501 S. Pacific Ave.
Glendale, CA 91204
(818) 548-4098

Steps To Rent:

1. Complete and submit a Facilities Permit Application online at www.glendaleca.gov/reservations.
2. Upon confirmation of availability of the facility, staff will contact you with any follow up questions, and to discuss your permit.
3. Upon receiving your permit, make arrangements with staff to finalize all permit requirements, and make all applicable payments.
4. Two weeks prior to the event date, reach out to staff to discuss and finalize the plot plan, if applicable.

Indoor Spaces:

- Gym A, maximum capacity: 300
- Gym B with Stage, maximum capacity: 300
- Red Bud Room, maximum capacity: 40
- Sycamore Room, maximum capacity: 60
- Oak Room, maximum capacity: 32
- Conference Room, maximum capacity: 8
- A kitchenette equipped with an oven, 6 burner stove top, warming oven, microwave, and three basin sink. *Must be reserved in conjunction with a room reservation. You must bring your own kitchen equipment including pots, pans, utensils, storage ware, etc.*

Outdoor Spaces:

- Little League Baseball Field
- Multi-Use Artificial Turf Field with soccer lines
- Terrace, maximum capacity: 24
- Multi-Use Court with basketball and Pickleball lines
- Two picnic shelters, maximum capacity: 50 each (equipped with a barbecue and sink)



Facility Reservations

Sparr Heights Community Center

1613 Glencoe Way
Glendale, CA 91208
(818) 548-2187

Steps To Rent:

1. Complete and submit a Facilities Permit Application online at www.glendaleca.gov/reservations.
2. Upon confirmation of availability of the facility, staff will contact you with any follow up questions, and to discuss your permit.
3. Upon receiving your permit, make arrangements with staff to finalize all permit requirements, and make all applicable payments.
4. Two weeks prior to the event date, reach out to staff to discuss and finalize the plot plan, if applicable.

Indoor Spaces:

- Verdugo Room maximum capacity: 100
- Garden Room maximum capacity: 40
- A Kitchenette equipped with warming oven, microwave, and two basin sink. *Must be reserved in conjunction with a room reservation. You must bring your own kitchen equipment including pots, pans, utensils, storage ware, etc.*

Outdoor Spaces:

- South Patio maximum capacity: 80
- North Patio maximum capacity: 8



Facility Reservations

PICNIC FACILITIES

(818) 548-2184 | (818) 548-2752

www.glendaleca.gov/reservations

Verdugo Park

1621 Canada Blvd., Glendale, CA 91208

- Sections: 5
- Maximum Capacity: 100 per section
- Amenities Include: BBQ grill, electrical outlets available in sections 2, 3, 4
- Jumper permitted

Catalina Verdugo Adobe

2211 Bonita Ave., Glendale, CA 91208

- Pavilions: 1
- Maximum Capacity: 50
- Amenities Include: electrical outlets
- No onsite cooking

Palmer Park

610 E. Palmer Ave., Glendale, CA 91205

- Pavilions: 2
- Maximum Capacity: 50 per pavilion
- Amenities Include: electrical outlets, BBQ grill, sink
- Jumper permitted

Cerritos Park

3690 San Fernando Rd., Glendale, CA 91204

- Pavilions: 1
- Maximum Capacity: 30
- Propane gas BBQ only
- Jumper permitted

Deukmejian Wilderness Park

3429 Markridge Rd., Glendale, CA 91214

- Pavilions: 2
- Maximum Capacity: 12 (two tables)
- Amenities Include: electrical outlets
- No onsite cooking

Lower Scholl Canyon Park

2847 E. Glenoaks Blvd., Glendale, CA 91206

- Pavilions: 3
- Maximum Capacity: 80 per pavilion
- Amenities Include: BBQ grill, sink, electrical outlets
- Jumper permitted

Casa Adobe de San Rafael

1330 Dorothy Dr., Glendale, CA 91202

- Pavilions: 1
- Maximum Capacity: 100
- Amenities Include: sink, electrical outlets
- Jumper permitted
- No onsite cooking

Central Park Paseo

220 S. Brand Blvd., Glendale, CA 91205

- Maximum Capacity: 75
- Amenities Include: electrical outlets



Facility Reservations

COMMUNITY BUILDINGS

(818) 548-2184 | (818) 548-2752

www.glendaleca.gov/reservations

Griffith Manor Community Room

1551 Flower St., Glendale, CA 91201

- Maximum Capacity: 50
- Amenities Include: tables, chairs, warming oven, refrigerator, sink
- Jumper permitted



Dunsmore Community Building

4700 Dunsmore Ave., Glendale, CA 91214

Dunsmore Community Room

- Maximum Capacity: 50
- Amenities Include: tables, chairs
- Jumper permitted

Dunsmore Community Room Kitchen

- Amenities Include: sink, warming oven, refrigerator



Joe Bridges Clubhouse

2531 E. Glenoaks Blvd., Glendale, CA 91206

- Maximum Capacity: 100
- Amenities Include: tables, chairs, warming oven, refrigerator, sink
- Jumper permitted



Brand Studios

1601 W. Mountain St., Glendale, CA 91201

- Maximum Capacity: 100
- Amenities Include: tables, chairs, microwave, refrigerator, sink
- No onsite cooking



Facility Reservations

WEDDING SITES

(818) 548-2184 | (818) 548-2752

www.glendaleca.gov/reservations

Brand Friendship Garden & Victorian Gazebo

1601 W. Mountain St., Glendale, CA 91201

- Maximum Capacity: 200
- Amenities Include: 100 white chairs, electrical outlets



Casa Adobe de San Rafael

1330 Dorothy Dr., Glendale, CA 91202

- Maximum Capacity: 100
- Amenities Include: sink, 100 white plastic chairs, electrical outlets
- Jumper permitted
- No onsite cooking



Catalina Verdugo Adobe

2211 Bonita Ave., Glendale, CA 91208

- Maximum Capacity: 50
- Amenities Include: electrical outlets, resin picnic tables, fountain, and kitchenette with a counter and sink



Facility Reservations

Civic Auditorium

1401 N. Verdugo Rd.
Glendale, CA 91208
(818) 548-2787

www.glendalecivic.com

Steps To Rent:

1. Complete and submit a Facilities Permit Application online at www.glendaleca.gov/reservations.
2. Upon confirmation of availability of the facility, staff will contact you with any follow up questions, and to discuss your permit.
3. Upon receiving your permit, make arrangements with staff to finalize all permit requirements, and make all applicable payments.
4. Two weeks prior to the event date, reach out to staff to discuss and finalize the plot plan, if applicable.

Indoor Spaces:

- Upper Auditorium, maximum capacity: 1,100
- Commercial Kitchen on both levels
- Terrace Room, maximum capacity: 125 - *Must be reserved in conjunction with the Upper Auditorium*

Parking:

- Parking Lot and/or Structure - *Must be reserved in conjunction with the Upper Auditorium*



Facility Reservations

Glendale Sports Complex

2200 Fern Lane
Glendale, CA 91208
(818) 937-7440

Steps To Rent:

1. Complete a Facility Permit Application and submit it online, or Field Reservation Request Form available at www.glendaleca.gov/reservations, and return it to the Sports Office in person or via email at SportsComplexReservations@glendaleca.gov.
2. Upon confirmation of availability of the facility, staff will contact you with any follow up questions, and to discuss your permit.
3. Upon receiving your permit, make arrangements with staff to finalize all permit requirements, and make all applicable payments.
4. Two weeks prior to the event date, reach out to staff to discuss and finalize the plot plan, if applicable.

Indoor Spaces:

- Meeting Room, maximum capacity: 50

Outdoor Spaces:

- Majors Artificial Turf Baseball Field with soccer lines for U12
- 2 Natural Grass Softball Fields
- 2 Artificial Turf Soccer Fields



Facility Reservations

Pacific Community Pool

509 S. Pacific Ave.
Glendale, CA 91204
(818) 937-7433

www.glendaleaquatics.com

Steps To Rent:

1. Complete and submit a Facilities Permit Application online at www.glendaleca.gov/reservations.
2. Upon confirmation of availability of the facility, staff will contact you with any follow up questions, and to discuss your permit.
3. Upon receiving your permit, make arrangements with staff to finalize all permit requirements, and make all applicable payments.

Outdoor Spaces:

- 25 yard / 6-lane pool
- Shallow end for recreation swim
- 2'-10' depth



Facility Reservations

Stone Barn Nature Center at Deukmejian Wilderness Park

3429 Markridge Road
Glendale, CA 91214
(818) 937-7428

Steps To Rent:

1. Complete and submit a Facilities Permit Application online at www.glendaleca.gov/reservations.
2. Upon confirmation of availability of the facility, staff will contact you with any follow up questions, and to discuss your permit.
3. Upon receiving your permit, make arrangements with staff to finalize all permit requirements, and make all applicable payments.
4. Two weeks prior to the event date, reach out to staff to discuss and finalize the plot plan, if applicable.

Outdoor Spaces:

- Outdoor amphitheater area with capacity of 100 & electrical outlets
- Patio of the Stone Barn
- 2 outdoor picnic pavilions available for rentals

Indoor Spaces:

- Indoor Stone Barn Nature Center (with center exhibits shifted to edges of room) with capacity of 80. Amenities include banquet tables and white folding chairs.



Facility Reservations

Verdugo Skate Park

1621 Canada Blvd.

Glendale, CA 91208

(818) 548-2786 for hours and operation

(818) 548-2184 for facility rentals

Steps To Rent:

1. Complete and submit a Facilities Permit Application online at www.glendaleca.gov/reservations.
2. Upon confirmation of availability of the facility, staff will contact you with any follow up questions, and to discuss your permit.
3. Upon receiving your permit, make arrangements with staff to finalize all permit requirements, and make all applicable payments.

Outdoor Spaces:

- 15,000 square foot concrete facility
- 6-9 foot Clover Bowl with an 11 foot Over-Vert section
- 6-10 foot Kidney Pool
- Street Plaza with rails and ledges
- Snake Run that empties into a 9 foot bowl with a loveseat



Phone Directory

PHONE DIRECTORY

Administration Office (818) 548-2000 Fax: (818) 548-3789

RECREATION PROGRAMS

Aquatics Programs	(818) 937-7433
Customer Service Office	(818) 548-2184, (818) 548-2752
Contract Classes Registration	(818) 548-2184, (818) 548-2752
Trails & Open Space Program	(818) 548-3795
Party On the Go!/Climbing Wall/Flicks on the Go!.....	(818) 548-2188
Senior Programs & Services	(818) 548-3775
Sports Programs for Adults and Youth	(818) 937-7440
Therapeutic Recreation Programs	(818) 548-3783
Verdugo Skate Park	(818) 548-2786
Volunteer Program	(818) 548-2792
Youth & Family Services Program	(818) 937-7247

FACILITY RESERVATION AND INFORMATION

Adult Recreation Center	(818) 548-3775
Brand Studios	(818) 548-2184, (818) 548-2752
Civic Auditorium	(818) 548-2787
Film Permits	(818) 548-3813
Glendale Sports Complex & Sports Fields	(818) 937-7440
Maple Park Community Center	(818) 548-3783
Pacific Community Center	(818) 548-4098
Pacific Community Pool	(818) 937-7433
Park & Picnic Reservations	(818) 548-2184, (818) 548-2752
Photography Permits	(818) 548-2184, (818) 548-2752
Sparr Heights Community Center	(818) 548-2187
Stone Barn Nature Center at Deukmejian Wilderness Park	(818) 937-7428
Wading Pool Reservations	(818) 937-7433
Wedding Reservations	(818) 548-2184, (818) 548-2752

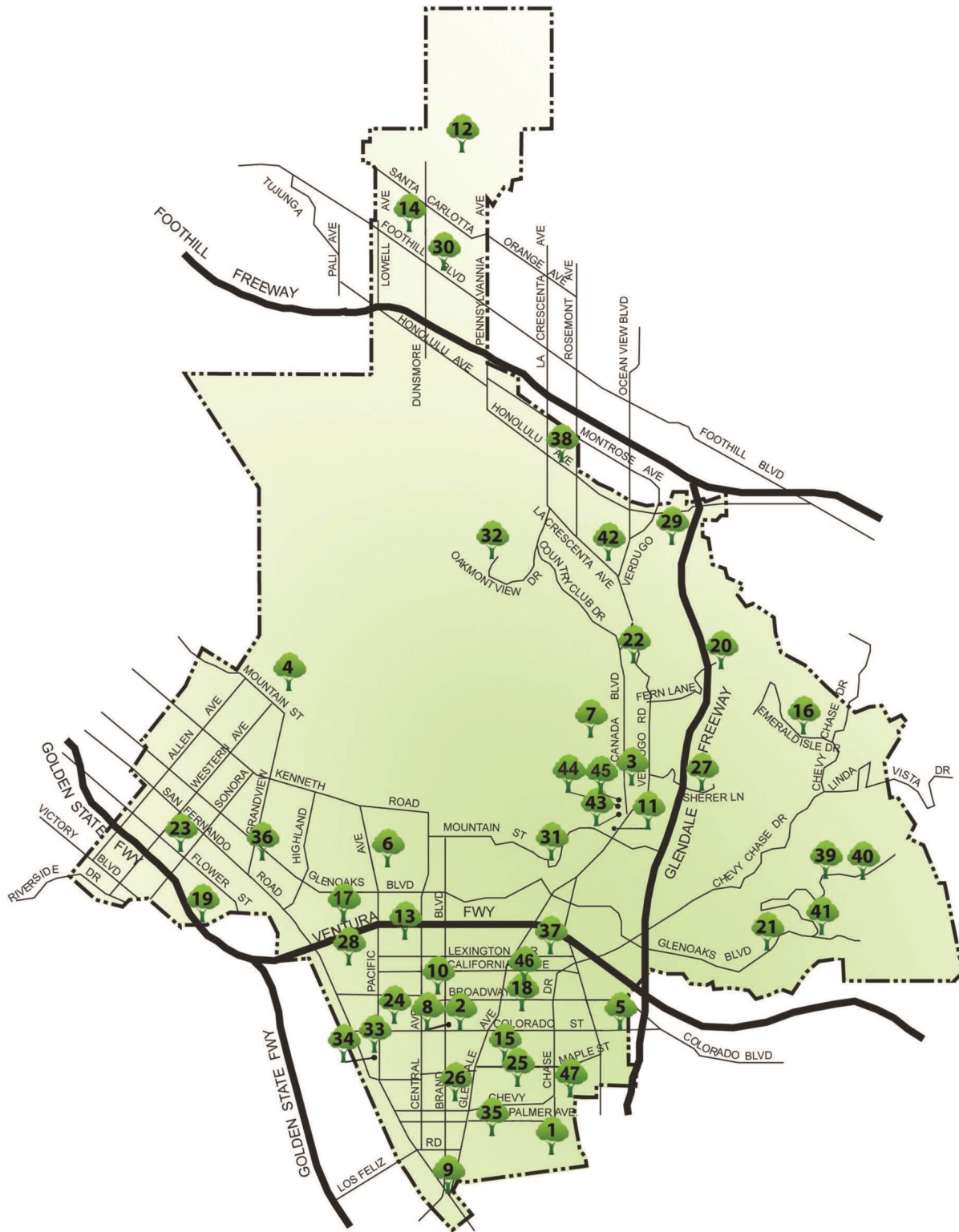
Events and programs may be cancelled due to L.A. County Department of Public Health protocols. For updates, visit www.glendale.ca.gov/LG.

Facility Information

1	Adams Square Mini Park	<u>1020 E. Palmer Ave. Glendale, CA 91205</u>
2	Adult Recreation Center & Central Park	<u>201 E. Colorado St. Glendale, CA 91205</u>
3	Babe Herman Little League Field	<u>1726 Cañada Blvd. Glendale, CA 91208</u>
4	Brand Park	<u>1601 W. Mountain St. Glendale, CA 91201</u>
5	Carr Park	<u>1615 E. Colorado St. Glendale, CA 91205</u>
6	Casa Adobe de San Rafael & Park	<u>1330 Dorothy Dr. Glendale, CA 91202</u>
7	Catalina Verdugo Adobe	<u>2211 Bonita Dr. Glendale, CA 91208</u>
8	Central Park Paseo	<u>220 S. Brand Blvd. Glendale, CA 91202</u>
9	Cerritos Park	<u>3690 San Fernando Rd. Glendale, CA 91204</u>
10	Chess Park	<u>227 N. Brand Blvd. Glendale, CA 91202</u>
11	Civic Auditorium	<u>1401 N. Verdugo Rd. Glendale, CA 91208</u>
12	Deukmejian Wildemess Park and Stone Barn Nature Center	<u>3429 Markridge Rd. Glendale, CA 91214</u>
13	Doran Gardens Mini Park	<u>327 W. Doran St., Glendale, CA 91203</u>
14	Dunsmore Park	<u>4700 Dunsmore Ave. Glendale, CA 91214</u>
15	Elk Mini Park	<u>800 E. Elk Ave. Glendale, CA 91205</u>
16	Emerald Isle Park	<u>2130 Lenore Dr. Glendale, CA 91206</u>
17	Fremont Park	<u>600 W. Hahn Ave. Glendale, CA 91203</u>
18	Glendale Heritage Garden	<u>141 S. Cedar St. Glendale, CA 91205</u>
19	Glendale Narrows Riverwalk	<u>300 Paula Avenue, Glendale, CA 91201- West Entrance</u>
20	Glendale Sports Complex	<u>2200 Fern Lane Glendale, CA 91208</u>
21	Glenoaks Park	<u>2531 E. Glenoaks Blvd. Glendale, CA 91206</u>
22	Glorietta Park	<u>2801 N. Verdugo Rd. Glendale, CA 91208</u>
23	Griffith Manor Park	<u>1551 Flower St. Glendale, CA 91201</u>
24	Harvard Mini Park	<u>425 W. Harvard Glendale, CA 91204</u>
25	Maple Park and Community Center	<u>820 E. Maple St. Glendale, CA 91205</u>
26	Maryland Avenue Park	<u>812 S. Maryland Avenue, Glendale, CA 91205</u>
27	Mayors Bicentennial Park	<u>1787 Loma Vista Dr. Glendale, CA 91208</u>
28	Milford Mini Park	<u>601 W. Milford Ave. Glendale, CA 91203</u>
29	Montrose Park	<u>3529 Clifton Place, Glendale, CA 91208</u>
30	New York Park	<u>4525 New York Ave. Glendale, CA 91214</u>
31	Nibley Park	<u>1103 E. Mountain St. Glendale, CA 91207</u>
32	Oakmont View Park	<u>2940 Oakmont View Dr. Glendale, CA 91208</u>
33	Pacific Park & Community Center	<u>501 S. Pacific Ave. Glendale, CA 91204</u>
34	Pacific Community Pool	<u>509 S. Pacific Ave. Glendale, CA 91204</u>
35	Palmer Park	<u>610 E. Palmer Ave. Glendale, CA 91205</u>
36	Pelanconi Park	<u>1000 Grandview Ave. Glendale, CA 91201</u>
37	Piedmont Park	<u>1145 E. Lexington Dr. Glendale, CA 91206</u>
38	Rockhaven - CLOSED FOR PUBLIC USE	<u>2713 Honolulu Ave., Glendale, CA 91020</u>
39	Scholl Canyon Athletic Fields	<u>3200 E. Glenoaks Blvd. Glendale, CA 91206</u>
40	Scholl Canyon Golf Course & Tennis Center	<u>3800 E. Glenoaks Blvd. Glendale, CA 91206</u>
41	Scholl Canyon Park & Picnic Area	<u>2849 E. Glenoaks Blvd. Glendale, CA 91206</u>
42	Sparr Heights Community Center	<u>1613 Glencoe Way Glendale, CA 91208</u>
43	Stengel Field	<u>1601 Cañada Blvd. Glendale, CA 91208</u>
44	Verdugo Park	<u>1621 Cañada Blvd. Glendale, CA 91208</u>
45	Verdugo Skate Park	<u>1621 Cañada Blvd. Glendale, CA 91208</u>
46	Wilson Mini Park	<u>1101 E. Wilson Glendale, CA 91206</u>
47	Windsor Mini Park	<u>1300 E. Windsor Glendale, CA 91205</u>

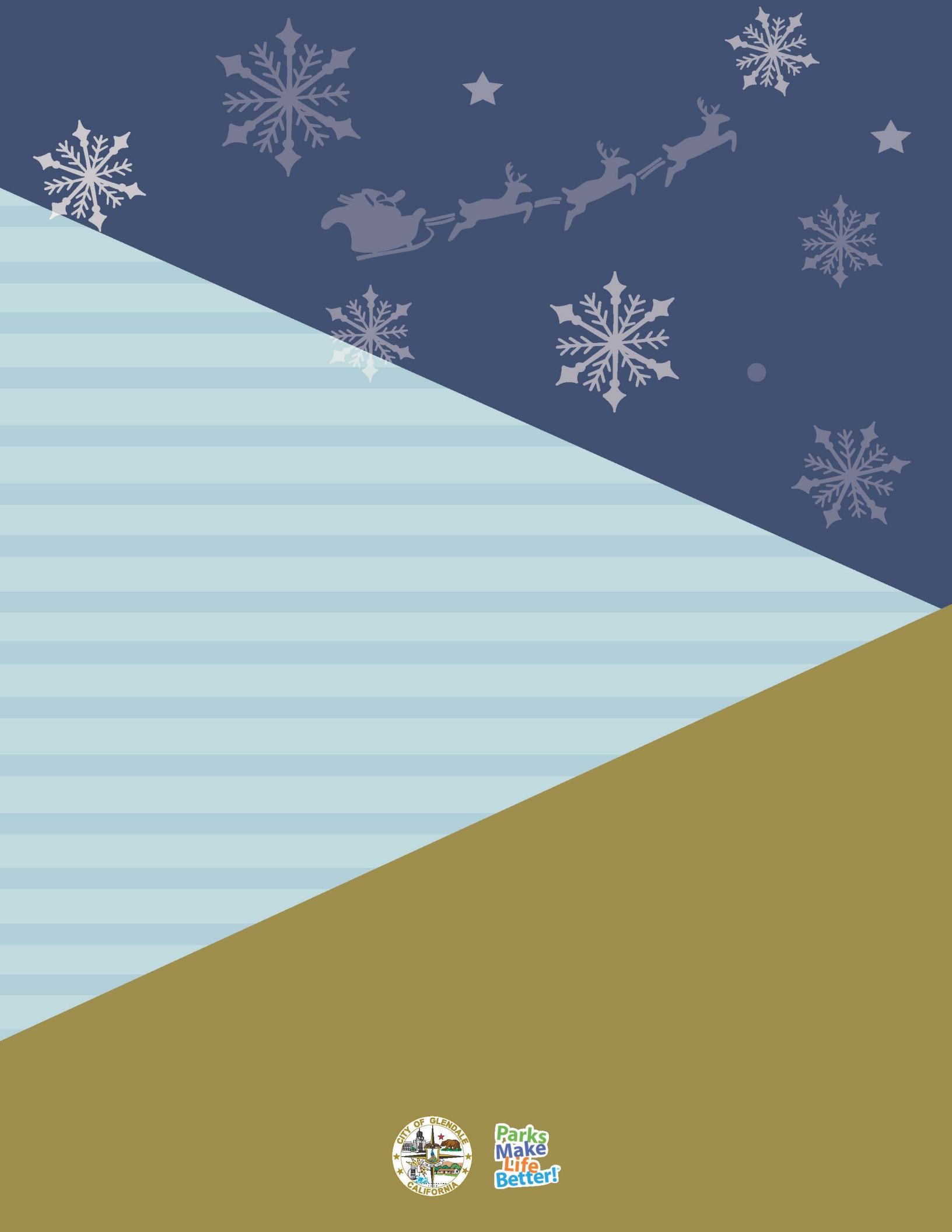
Events and programs may be cancelled due to L.A. County Department of Public Health protocols. For updates, visit www.glendale.ca.gov/LG.

Map of Glendale Parks



PARKS, COMMUNITY CENTERS, HISTORIC SITES, AND SPECIAL USE FACILITIES

Events and programs may be cancelled due to L.A. County Department of Public Health protocols. For updates, visit www.glendale.ca.gov/LG.



**Parks
Make
Life
Better!**