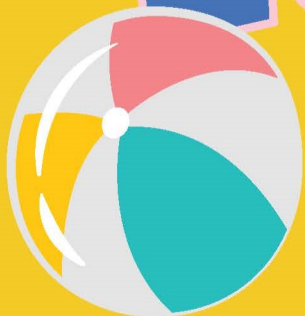


City of Glendale, Community Service & Parks

# Leisure Guide

summer 2022



**PROGRAMS, ACTIVITIES AND PARKS**  
**CHECK OUT OUR SUMMER DAY CAMPS AND AQUATICS PROGRAMS!**



[www.glendaleca.gov/parks](http://www.glendaleca.gov/parks)

@MyGlendaleParks

#MyGlendaleParks

# What's Inside

3	Greetings from the Director
4	E-Newsletter Information
5-6	Special Events
7	Special Events - Historic Facilities
8-10	Party Packages
11	Glendale Youth Alliance
12-13	Day Camps - Registration Information
14-20	Day Camps - Summer
21-25	Specialty Day Camp - Summer
25	Day Camps - Thanksgiving Break
26-28	Youth & Family Services
29-30	Drop-In Programs
31-32	Trails & Open Space
33-34	Verdugo Skate Park Programs
35-37	Aquatics
38	Splash Pads
39	Contract Class Information
40	Registration Information
41	Youth Classes
42-46	Youth Sports
47	Adult Classes
48-51	Adult Sports
52	GCC Senior Classes
53-58	Senior Classes & Activities
59-60	Senior Services
61	Filming in Parks & Community Buildings
62-63	Tours of Historic Facilities in Glendale Parks
64	Historic Buildings in Glendale Parks
65-76	Facility Reservations
77	Phone Directory
78	Map of Glendale Parks
79	Facility Information

Events and programs in this Leisure Guide may be cancelled due to L.A. County Department of Public Health protocols. For updates, visit [www.glendaleca.gov/LG](http://www.glendaleca.gov/LG).

## Councilmembers

Honorable Ardashes "Ardy" Kassakhian, *Mayor*  
Vrej Agajanian, Ara Najarian, Paula Devine, and Daniel Brotman

## Parks, Recreation & Community Services Commission

Henrik Sardarbegian, *President*  
Commissioners:  
Regina Alcazar, Ara Kalfayan, Stephen Meek, and Susan Wolfson

## CDBG Advisory Committee

Ronnie Gharibian, *Chair*  
Anita Quiñonez Gabrielian, *Vice Chair*  
Committee Members:  
Zanku Armenian, Armik Avedisian, and Noraier Ghazarian

## Management Services

Roubik Golanian, *City Manager*  
John Takhtalian, *Deputy City Manager*  
Silvio Lanzas, *Deputy City Manager/Fire Chief*

## Community Services & Parks

Onnig Bulanikian, *Director*  
Tereza Aleksanian, *Deputy Director - Admin, R&CS, Human Services*  
Koko Panossian, *Deputy Director - Park Services and Park Planning*  
Judith Velasco, *Workforce Development Administrator*  
Arsine Isayan, *Homeless Programs Manager*  
Maggie Kavarian, *Sr. Community Services Supervisor - CDBG*  
Gabrielle Goglia, *Sr. Community Services Supervisor - R&CS*  
Sevag Garabetian, *Sr. Community Services Supervisor - R&CS*

## SATISFACTION GUARANTEE

*Satisfaction is guaranteed on all programs. If you are not satisfied with the quality of our programs, for any reason, we encourage you to contact us immediately so that we can work to resolve your concerns and improve the quality of our programs for all participants.*

Si tiene necesidad de interpretación, favor de llamar al (818) 548-2782.

Հայերեն տեղեկությունների համար զանգահարել հետևյալ հեռախոսահամարով (818)548-2000

Administration Office: (818) 548-2000

[glendaleca.gov/parks](http://glendaleca.gov/parks)



Follow us on Twitter: [@MyGlendaleParks](https://twitter.com/MyGlendaleParks) and



[facebook.com/MyGlendaleParks](https://facebook.com/MyGlendaleParks)



# Greetings from the Director



## Summer 2022

The Community Services & Parks Department is offering summer fun for everyone! Special programs and activities for children of all ages include recreational swim and instructional swim lessons, the wading pool program, youth and teen day camps, specialty camps (including the new Nature Camp), sports camps, and Life Long Learning classes.

Adult programs include art and special interest classes, exercise and wellness classes, and tennis classes for all skill levels. Participate in our Trails & Open Space Program events, visit the new Stone Barn Nature Center at Deukmejian Wilderness Park, and enjoy the great outdoors.

Spice up your parties or special events with one of our Mobile Recreation Packages. Perfect for children ages 5-12, Party on the Go! brings arts & crafts, sports, and games to your party. Enjoy a movie under the moonlight on a 17' x 10' or 15' x 8' screen with high power video projection and surround sound with our Flicks on the Go! package. Raise the fun and excitement with Glendale Rocks! portable climbing wall. Wading pools are also available for private rentals during non-operational times. We want to help make your event an unforgettable one!

Summer Concerts in the Park will return on Wednesday nights at Verdugo Park from July 6 - August 10. Bring a picnic basket, blanket and enjoy live music with the family. Also, be sure to join us for Cruise Night, one of Southern California's most celebrated car events, which will be held on July 16 on Brand Boulevard. Approximately 300-400 classic cars, live entertainment, and community displays will highlight the event. This year, we have added modified imports and exotic cars as well. Stay until the end, and enjoy a Fireworks Spectacular near the main stage area.

Don't miss out on the latest information; get on our e-mail list, sign up to receive our monthly CSP Newsletter, and follow us on Twitter and Facebook. Take a look inside for more information.

Respectfully,

A blue ink signature of Onnig Bulanikian.

**Parks  
Make  
Life  
Better!**


Onnig Bulanikian, Director  
Community Services & Parks Department

# E-Newsletter Information

## Community Services & Parks (CSP) Monthly E-Newsletter


Get the most up-to-date information about what is happening in the Community Services & Parks Department by signing up to receive the department's monthly E-Newsletter.

Learn about upcoming events, community meetings, registration deadlines, parks projects, ongoing programs and services, program success stories, and more.



Please visit [www.glendaleca.gov/covid](http://www.glendaleca.gov/covid) for the most up-to-date COVID-19 news.

### The Stone Barn Nature Center Is Now Open!



**Deukmejian Wilderness Park**  
[3429 Markridge Road, Glendale, CA 91214](http://3429 Markridge Road, Glendale, CA 91214)

**Hours of Operation**  
Fridays: 3:00 p.m. – 6:00 p.m.  
Saturdays & Sundays: 9:00 a.m. – 6:00 p.m.  
Closed on April 17, 2022

The Stone Barn Nature Center is now open! Please stop by during our open hours of operation to tour the center and learn about the history of the Deukmejian Wilderness Park and the Barn. Entry is free!



Visit [www.glendaleca.gov/cspnewsletter](http://www.glendaleca.gov/cspnewsletter) to subscribe.

*(P.S. We never make your e-mail address available to any other company or organization.)*

# PARENT'S NIGHT OUT

Drop off the kids for a night of fun activities, friends, food and a movie. The fee is \$15.00 per child, ages 5 to 14 years old. Participants are encouraged to bring pajamas, a blanket and a pillow.

For more information, please call:

(818) 548-4098 for Pacific Community Center or  
(818) 548-2787 for Sparr Heights Community Center

### Pacific Community Center

501 S. Pacific Ave.  
Glendale, CA 91204

**Dates:** September 16, 2022  
October 28, 2022

**Time:** 6:00 p.m. - 12:00 a.m.

### Sparr Heights Community Center

1613 Glencoe Way  
Glendale, CA 91208

**Dates:** October 21, 2022

**Time:** 6:00 p.m. - 12:00 a.m.





## Special Events

# Cruise Night



Saturday, July 16, 2022

5:30 p.m. – 10:30 p.m.

In the heart of Glendale on Brand Blvd.

Registration includes a swag bag with a free event t-shirt.

NEW this year! Modified Imports and Exotic Cars will be accepted!

[GlendaleCruiseNight.com](http://GlendaleCruiseNight.com)

Information Hotline: (818) 548-6464

**TROPHIES AWARDED!**

(Categories at Judges' discretion)

Fireworks! Live Entertainment! Family Fun & Activities!



@cruisenightglendale #glendalecruisenight



FREE CONCERTS  
**WEDNESDAY**  
EVENINGS



7:00 PM to 9:00 PM



**Verdugo Park (North End)**

1621 Cañada Blvd., Glendale CA, 91208



**July 6, 2022** – Vaughn Suponatime / Tribute to Frank Sinatra

**July 13, 2022** – Urgent LA / Foreigner Tribute Band

**July 20, 2022** – The Breakfast Club / 80's

**July 27, 2022** – Blasphemous Rumours / Depeche Mode Tribute Band

**August 3, 2022** – Orquesta Charangoa / Cuban Salsa

**August 10, 2022** – Bobby and the Gypsies / Flamenco / Catalan Rumba

[www.Glendaleca.gov/summerconcerts](http://www.Glendaleca.gov/summerconcerts)

(818) 548-2188



@MyGlendaleParks

**SUMMER  
CONCERTS  
IN THE  
PARK**

# Special Events - Historic Facilities

## "Shoseian" Whispering Pine Teahouse & Friendship Garden

Inside Brand Park, 1601 West Mountain St., Glendale, CA 91201; (310) 849-5432

Join the Friends of the Shoseian Teahouse for the following family friendly events:

**July 17, 2022 11:00 a.m. - 1:00 p.m.**

The Japanese Farmhouse - with Dennis Reed

**August 21, 2022 11:00 a.m. - 1:00 p.m.**

Transformative Power: Kundalini Yoga & The Vital Warrior with Mikal Vega

Visit [www.glendaleteahouse.org](http://www.glendaleteahouse.org) for more information.

Please RSVP to: [info@glendaleteahouse.org](mailto:info@glendaleteahouse.org)



## Catalina Verdugo Adobe

2211 Bonita Drive, Glendale, CA 91208; (747) 228-2688

**June 5, 2022 2:00 p.m. - 5:00 p.m.**

Social in the Park - Honoring the members of the Days of the Verdugos Heritage Association. Enjoy refreshments, relax, and socialize. Children are welcome. A tour of the Museum will be available.



## Doctors House Museum

Inside Brand Park, 1601 West Mountain St., Glendale, CA 91201; (818) 242-7447

**May 15 - November 13, 2022 2:00 p.m. - 4:00 p.m.**

Sunday Tours of the Doctors House Museum, featuring the exhibit "Early Women Entrepreneurs of Glendale." The exhibit explores the trailblazing paths of local women in history: Nell Shipman, Fanny Briggs Carr, Dorothy Thorpe, A. Lois Modglin and Piedad Yorba Sowl. Please visit [www.glendalehistorical.org](http://www.glendalehistorical.org) for more information and COVID safety regulations.





# Party Packages



## Party on the Go!

Each party package is designed for children ages 5 - 12 and will include arts and crafts, sports and games. The basic **"Party on the Go!"** package will include two staff for two hours and 6 games/activities for up to 12 children. Additional fees will apply for larger packages.

Programs limited to the Glendale and La Crescenta area.

### FEES:

- Standard pricing: \$300 for the first 2 hours
- \$100 for every hour thereafter
- Non-profit rates available upon request and approval with proper tax status documentation

Half of the total rental fees are due at the time of reservation to guarantee date.

### Standard Package includes six (6) from the following:

#### Games

Potato Sack Races  
Capture the Flag  
Balloon Toss  
Bingo  
Hula Hoop Contest  
Frisbee Distance Throw  
Obstacle Course

#### Arts and Crafts

Paint art  
Clay art  
Foamy art  
Bead art  
Wooden art  
Glitter art  
Coloring



For more information, please call: (818) 548-2188.

Events and programs may be cancelled due to L.A. County Department of Public Health protocols. For updates, visit [www.glendaleca.gov/LG](http://www.glendaleca.gov/LG).



## Party Packages

# Glendale ROCKS! Climbing Wall



**For More Information  
Call (818) 548-2188**

**Parks  
Make  
Life  
Better!®**

**Glendale Rocks!** portable climbing wall is 26 vertical feet of pure fun and excitement! The wall can be used for fundraisers, company events, grand openings, physical education classes or special events. The wall can handle 4 climbers at a time and up to 45 climbers per hour. The standard rental package will include two employees, the wall, and safety equipment for a two hour period.

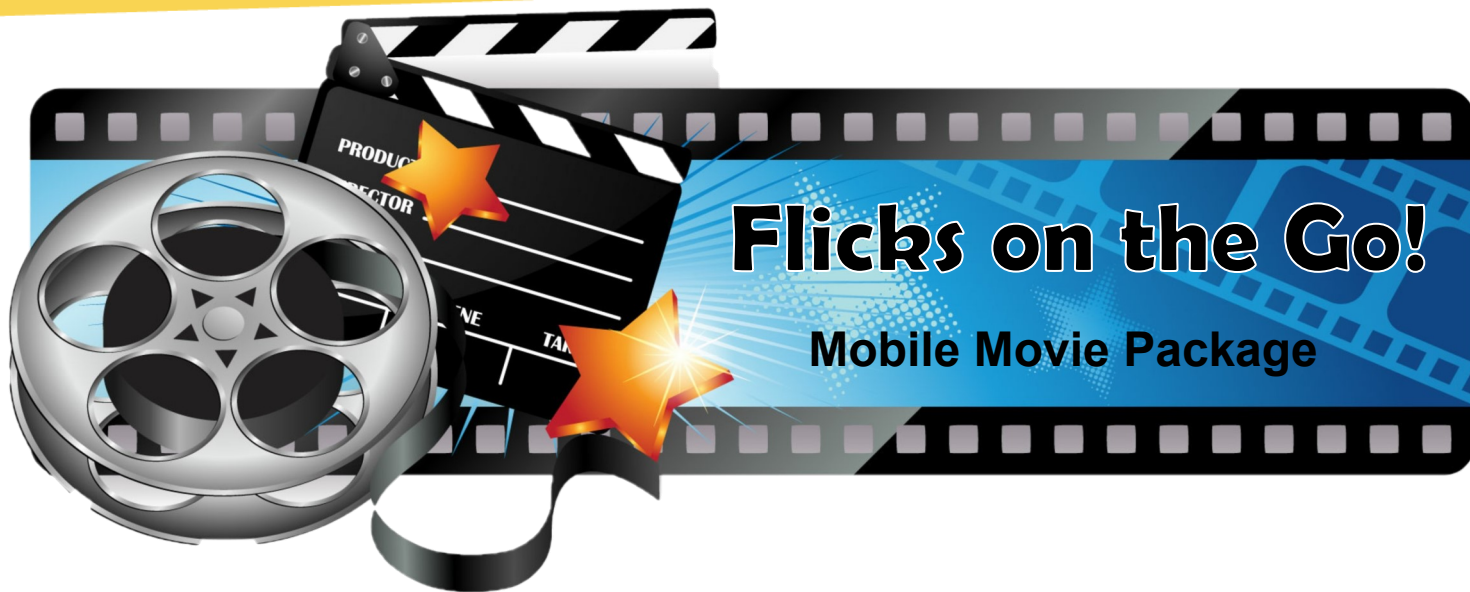
Program limited to the Glendale and La Crescenta area.

### **FEES:**

- Standard pricing: \$300 for the first 2 hours
- \$100 for every hour thereafter
- Non profit rates available upon request and approval with proper tax status documentation

Half of the total rental fees are due at the time of reservation to guarantee date.

# Party Packages



Watching a movie under the moonlight brings back the days of the drive-in era and will surely have nostalgic appeal to families throughout our community. Watching a movie, playing video games or streaming content on a large screen during your outdoor special event will definitely elevate your event and add a hip factor. We have two packages available for your special event!

## **Flicks on the Go! – Package A**

- 17 foot wide by 10 foot tall large projection screen with high powered video projection
- High Powered Sound System with 4 Speakers up to 1,000 Watt max output each
- Blue Ray DVD Player (Customer is responsible for license fees and obtaining rights to display content)
- Generator to provide power
- 3 employees for delivery, installation, operation and breakdown
- A popcorn machine, carnival games, craft tables are available for an additional fee

## **Flicks on the Go! – Package B**

- 15 foot wide by 8 foot tall LED Screen with 936 X 520p (4.81mm) resolution
- Height Adjustable and full 360 degree rotation for optimal viewing
- High Powered Sound System with 2 Speakers up to 1,000 Watt max output each
- Blue Ray DVD Player
- Dish Network Satellite Feed (Customer is responsible to pay license fees and obtain rights to display content)
- HDMI and SDI auxiliary inputs for live feed
- HDMI auxiliary input for gaming consoles (Gaming console not included)
- Generator to provide power
- A popcorn machine, carnival games, craft tables are available for an additional fee

For program information, please call  
(818) 548-2188.



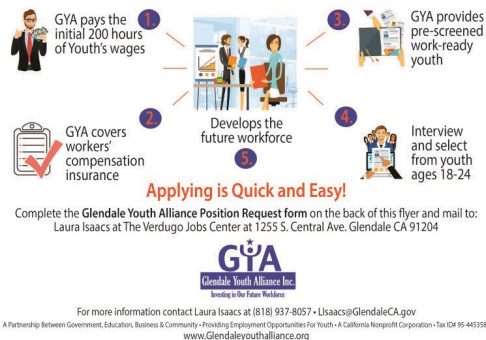
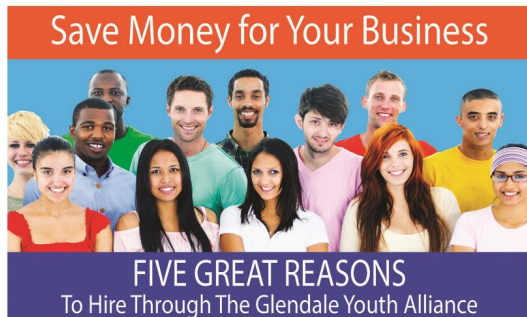


# Glendale Youth Alliance



Make a difference in our community by investing in our local youth and hiring through GYA!

## Business Owners



## Need additional help with your operations?

Hire through the GREAT program, and we can place an employee in a short time frame. It's easy and hassle free. GYA will provide pre-screened youth, cover the workers' compensation insurance and payroll. Your business will be billed bi-monthly for the youth wages. Call us today at (818) 937-8056.

For more information about GYA programs, please call (818) 937-8073, or visit us at [www.glendaleyouthalliance.org](http://www.glendaleyouthalliance.org).

Like us on Facebook and stay connected!

## Private Property Owners

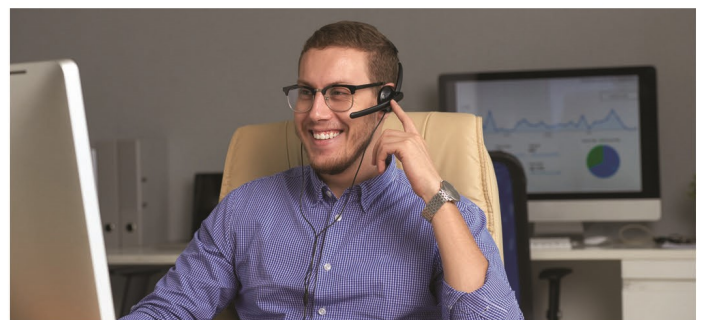


Hire our supervised teams to perform hillside brush clearance on your property for a reasonable fee. GYA teams can also be hired for other general labor tasks. All work teams are fully insured, supervised and have their own tools and transportation. Reasonable Prices! Quality of work guaranteed!

### Services Available:

- Hillside clearance
- Yard maintenance
- Landscaping
- Brush abatement & clearance
- Property clean up and general labor tasks
- Mudslide prevention work

For a free estimate, call (818) 548-3727.





# Day Camp Registration Information

The Community Services & Parks Department is pleased to offer day camps each season. Please see the individual camp listings for specific details on each camp.

## Camps in this Issue: Important Dates

<u>Season</u>	<u>Scholarship/Discount Applications Due by 5 p.m.</u>	<u>Registration Begins</u>	<u>Camp Dates</u>
Summer	Deadline Passed	April 25, 2022, beginning at 9:00 a.m. (Glendale Resident ONLY) April 27, 2022, beginning at 9:00 a.m. (General Registration)	June 13 - August 12, 2022
Thanksgiving Break	August 19, 2022	September 19, 2022	November 21 - 23, 2022

## Registration

**Online:** Registration is available at [www.myglendaleparks.com](http://www.myglendaleparks.com).

**Phone:** Call the community center where the camp is taking place, or the Customer Service Office at (818) 548-2752.

**In Person:** Visit the community center where the camp is taking place or the Customer Service Office located at the Civic Auditorium, 1401 N. Verdugo Rd., Glendale, CA 91208.

## Residency Status

The Community Services & Parks Department (CSP) offers reduced Glendale Resident rates for day camps to customers who reside within Glendale Unified School District boundaries and have provided the required proof of residency. Customers only need to verify residency once per year during any season, but must re-submit proof every summer regardless of which season residency status was last verified. **Proof of residency can be provided at the time of in-person camp registration, but in order to obtain Glendale Resident rates while registering online or by phone, residency status must be verified in advance.**

You can obtain residency status in advance of camp registration by emailing a copy of your two most recent utility bills or a copy of your current, executed rental agreement to our Customer Service Office at [cspcustomerservice@glendaleca.gov](mailto:cspcustomerservice@glendaleca.gov). Please include your full name, valid address, and a copy of the proof in the email. Emails will be reviewed within two (2) business days, and you will receive an email response confirming residency when it has been completed.

**Customers not verified as Glendale Residents at the time of registration will be charged non-resident rates and will NOT be refunded the difference for any non-resident rates paid, even if proof is provided at a later time. 2022 residency verification began on March 21, 2022!**

You may also pre-register in person during business hours at any of the following locations:

### **Adult Recreation Center**

201 E. Colorado Street  
Glendale, CA 91205  
(818) 548-3775

### **Customer Service Office**

1401 N. Verdugo Rd.  
Glendale, CA 91208  
(818) 548-2184

### **Glendale Sports Complex**

2200 Fern Lane  
Glendale, CA 91208  
(818) 548-6420

### **Maple Park Community Center**

820 E. Maple St.  
Glendale, CA 91205  
(818) 548-3694

### **Pacific Community Center**

501 S. Pacific Ave.  
Glendale, CA 91204  
(818) 548-4098

### **Pacific Community Pool**

509 S. Pacific Ave.  
Glendale, CA 91204  
(818) 937-7433

### **Sparr Heights Community Center**

1613 Glencoe Way  
Glendale, CA 91208  
(818) 548-2188

### **Stone Barn Nature Center**

3429 Markridge Rd.  
Glendale, CA 91214  
(818) 937-7440

Events and programs may be cancelled due to L.A. County Department of Public Health protocols. For updates, visit [www.glendaleca.gov/LG](http://www.glendaleca.gov/LG).

# Day Camp Registration Information

## Scholarship and Discount Opportunities

Glendale residents may be eligible to receive a scholarship for camps at Maple Park Community Center or Pacific Community Center. A discount is also available for Glendale residents at all locations, based on household income levels. Please visit [www.glendaleca.gov/daycamps](http://www.glendaleca.gov/daycamps) and click on Scholarship and Discount Opportunities for details.

## Late Registration and Cancellation Policy

- A \$20 late registration fee will be charged per camper for payments not received by Wednesday at 5:00 p.m. prior to the week for which you are registering.
- A cancellation fee of \$20 per week, per child will be assessed for all transfers and cancellations of camp locations, dates of enrollment, or participation.

## Day Camp T-Shirts

A camp T-shirt may be purchased at camp for \$5 (cash or check). Shirts must be purchased for camps that go on excursions and must be worn on excursion day.

## Special Needs Accommodations

The Community Services & Parks Department will provide reasonable accommodations toward the inclusion of a participant. Please contact the Therapeutic Recreation Program supervisor at (818) 548-3783 two weeks prior to the start of the program. Ample time is required to determine the needs for each request. Children who are accompanied by a one-to-one aide must have the aide present during their time in the program. All aides must undergo a background check through the City of Glendale, and must be approved before beginning work. **Children who require an aide may not begin the program without an approved aide.**

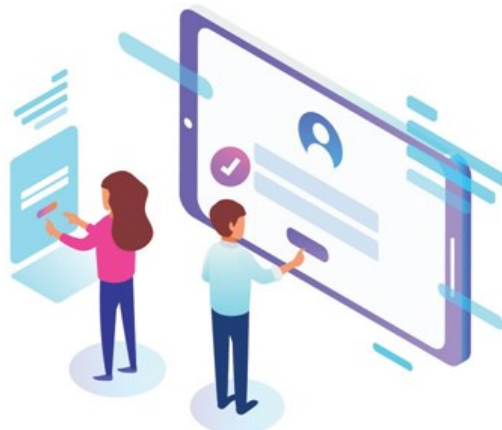
## Payment Methods

**Online:** Credit Card

**Over the Phone:** Credit Card\*

**In Person:** Cash, Check, or Credit Card\*

\* All In-Person and Phone Credit Card transactions will incur a non-refundable 2.5% service fee.



Events and programs may be cancelled due to L.A. County Department of Public Health protocols. For updates, visit [www.glendaleca.gov/LG](http://www.glendaleca.gov/LG).

# Day Camps - Summer

## Kool Dayz Summer Camp

### Pacific Community Center

501 S. Pacific Ave., Glendale, CA 91204

For information, call (818) 548-4098

Campers will spend the day with old friends and make new ones in a fun, supervised, indoor and outdoor setting. Swimming, games, arts and crafts, music, dance and sports are part of the Kool day. Hot/Cold lunch will be provided as part of the GUSD Seamless Summer Lunch Program. Lunch will not be provided during Week 9 of camp, August 8-12, 2022.

**Dates:** Monday - Friday, June 13 - August 12, 2022  
**Ages:** 6 - 12 ( Child must be 6 years old by August 12, 2022)

		<u>Weekly Theme</u>
<b>Week 1:</b>	June 13-17	Spirit Week
<b>Week 2:</b>	June 21-24* (no camp on Monday, June 20)	Treasure Island
<b>Week 3:</b>	June 27-July 1	Wild Wild West
<b>Week 4:</b>	July 5-8* (no camp on Monday, July 4)	Summer Stars & Stripes
<b>Week 5:</b>	July 11-15	Christmas in July
<b>Week 6:</b>	July 18-22	Summerween
<b>Week 7:</b>	July 25-29	Carnival
<b>Week 8:</b>	August 1-5	Wizardry
<b>Week 9:</b>	August 8-12	Olympics

	<u>Glendale Resident Fee</u>	<u>Non-Resident Fee</u>	<u>Time</u>
<b>Full Day</b>	\$ 85/week/child	\$100/week/child	9:00 a.m. - 4:00 p.m.
<b>Half Day Morning</b>	\$ 60/week/child	\$ 75/week/child	9:00 a.m. - 1:00 p.m.
<b>Half Day Afternoon</b>	\$ 60/week/child	\$ 75/week/child	12:00 p.m. - 4:00 p.m.
<b>Before Care</b>	\$ 20/week/child	\$ 20/week/child	7:00 a.m. - 9:00 a.m.
<b>After Care</b>	\$ 20/week/child	\$ 20/week/child	4:00 p.m. - 6:00 p.m.

\* Fees will be prorated for shorter weeks.



Events and programs may be cancelled due to L.A. County Department of Public Health protocols. For updates, visit [www.glendaleca.gov/LG](http://www.glendaleca.gov/LG).



# Day Camps - Summer



## Kinder Summer Camp

**Pacific Community Center**  
**501 S. Pacific Ave., Glendale, CA 91204**  
**For information, call (818) 548-4098**

Kinder Camp is a great way to introduce your preschooler or kindergartener to day camp. Your camper will interact with other campers, make new friends, and develop social skills. Campers will have indoor and outdoor games, sports, arts and crafts, and story time. Hot/Cold lunch will be provided as part of the GUSD Seamless Summer Lunch Program. Lunch will not be provided during Week 9 of camp, August 8-12, 2022.

**Dates:** Monday - Friday, June 13 - August 12, 2022  
**Ages:** 4 - 5 ( Child must be 4 years old by August 12, 2022 and be able to perform restroom tasks independently.)

		<u><b>Weekly Theme</b></u>
<b>Week 1:</b>	June 13-17	Spirit Week
<b>Week 2:</b>	June 21-24* (no camp on Monday, June 20)	Treasure Island
<b>Week 3:</b>	June 27-July 1	Wild Wild West
<b>Week 4:</b>	July 5-8* (no camp on Monday, July 4)	Summer Stars & Stripes
<b>Week 5:</b>	July 11-15	Christmas in July
<b>Week 6:</b>	July 18-22	Summerween
<b>Week 7:</b>	July 25-29	Carnival
<b>Week 8:</b>	August 1-5	Wizardry
<b>Week 9:</b>	August 8-12	Olympics

	<u><b>Glendale Resident Fee</b></u>	<u><b>Non-Resident Fee</b></u>	<u><b>Time</b></u>
<b>Full Day</b>	\$ 105/week/child	\$120/week/child	9:00 a.m. - 4:00 p.m.
<b>Half Day Morning</b>	\$ 60/week/child	\$ 75/week/child	9:00 a.m. - 1:00 p.m.
<b>Half Day Afternoon</b>	\$ 60/week/child	\$ 75/week/child	12:00 p.m. - 4:00 p.m.
<b>Before Care</b>	\$ 20/week/child	\$ 20/week/child	7:00 a.m. - 9:00 a.m.
<b>After Care</b>	\$ 20/week/child	\$ 20/week/child	4:00 p.m. - 6:00 p.m.

\* Fees will be prorated for shorter weeks.

# Day Camps - Summer



## Travelin' Teens Summer Camp

### Pacific Community Center

501 S. Pacific Ave., Glendale, CA 91204

For information, call (818) 548-4098

Teen campers will explore fun Glendale locations and surrounding communities. Teens will make new friends, swim, go on field trips and chill with other teens. Field trips may include beach trip, movies, bowling, hiking, skating, Citywalk, the LA Zoo, and more! The cost of field trips is not included in the registration fee. Participants will have to spend their own money when going on these field trips. Staff will try to limit the additional out-of-pocket expense to \$20.00 per participant, per week. Hot/Cold lunch will be provided as part of the GUSD Seamless Summer Lunch Program. Lunch will not be provided during Week 9 of camp, August 8-12, 2022. Parents will need to pre-purchase meal cards or send a prepaid credit card with their child for cashless field trip locations. This will allow campers to purchase food on field trips where no outside food or cash is permitted by the location.

### 5-Day Camp

**Dates:** Monday - Friday, June 13 - August 12, 2022  
**Ages:** 12 - 14 Child must be 12 years old by August 12, 2022)

#### Weekly Theme

<b>Week 1:</b>	June 13-17	Spirit Week
<b>Week 2:</b>	June 21-24*	Treasure Island
	(no camp on Monday, June 20)	
<b>Week 3:</b>	June 27-July 1	Wild Wild West
<b>Week 4:</b>	July 5-8*	Summer Stars & Stripes
	(no camp on Monday, July 4)	
<b>Week 5:</b>	July 11-15	Christmas in July
<b>Week 6:</b>	July 18-22	Summerween
<b>Week 7:</b>	July 25-29	Carnival
<b>Week 8:</b>	August 1-5	Wizardry
<b>Week 9:</b>	August 8-12	Olympics

#### Glendale

	<u>Resident Fees</u>	<u>Non-Resident Fees</u>	<u>Times</u>
<b>Full Day</b>	\$85/week/child	\$100/week/child	9:00 a.m. - 4:00 p.m.
<b>Before Care</b>	\$20/week/child	\$ 20/week/child	7:00 a.m. - 9:00 a.m.
<b>After Care</b>	\$20/week/child	\$ 20/week/child	4:00 p.m. - 6:00 p.m.

\* Fees will be prorated for shorter weeks.

Events and programs may be cancelled due to L.A. County Department of Public Health protocols. For updates, visit [www.glendaleca.gov/LG](http://www.glendaleca.gov/LG).

# Day Camps - Summer

## Maple Starz Summer Camp

### Maple Park Community Center

820 E. Maple St., Glendale, CA 91205

For information, call (818) 548-3694 or (818) 548-3783

Children will spend the day with old friends and make new ones in a fun, supervised, indoor and outdoor setting. Games, arts and crafts, music, sports, and water fun are included in the fee. Space is limited; register early. Hot/Cold lunch will be provided as part of the GUSD Seamless Summer Lunch Program. Lunch will not be provided during Week 9 of camp, August 8-12, 2022.

**Dates:** Monday - Friday, June 13 - August 12, 2022

**Ages:** 6 - 12 ( Child must be 6 years old by August 12, 2022)

		<u>Weekly Theme</u>
<b>Week 1:</b>	June 13-17	Animal Planet
<b>Week 2:</b>	June 21-24* (no camp on Monday, June 20)	Nature Explorers
<b>Week 3:</b>	June 27-July 1	Superhero Academy
<b>Week 4:</b>	July 5-8* (no camp on Monday, July 4)	Wild World of Sports
<b>Week 5:</b>	July 11-15	Maple Art Studio
<b>Week 6:</b>	July 18-22	Beyond the Stars
<b>Week 7:</b>	July 25-29	Passports & Cuisine
<b>Week 8:</b>	August 1-5	Maple Choice Awards
<b>Week 9:</b>	August 8-12	Deep Sea Journey

	<u>Glendale Resident Fee</u>	<u>Non-Resident Fee</u>	<u>Time</u>
<b>Full Day</b>	\$ 75/week/child	\$ 90/week/child	9:00 a.m. - 4:00 p.m.
<b>Half Day Morning</b>	\$ 60/week/child	\$ 75/week/child	9:00 a.m. - 1:00 p.m.
<b>Half Day Afternoon</b>	\$ 60/week/child	\$ 75/week/child	12:00 p.m. - 4:00 p.m.
<b>Before Care</b>	\$ 20/week/child	\$ 20/week/child	7:00 a.m. - 9:00 a.m.
<b>After Care</b>	\$ 20/week/child	\$ 20/week/child	4:00 p.m. - 6:00 p.m.

\* Fees will be prorated for shorter weeks.





# Day Camps - Summer



## Sparr-Tacular Summer Camp

**Sparr Heights Community Center**  
1613 Glencoe Way, Glendale, CA 91208  
For information, call (818) 548-2187

It's time for summer fun at Sparr Heights Community Center! Children ages 6 -12 will enjoy games, crafts, and weekly presentations from various City departments to learn about public safety, public transit, recycling and composting, and visits to and from our local branch library. Children must bring snacks, water, and a brown bag lunch Monday through Thursday. We will have a lunch party every Friday with an alternating menu, serving either pizza, hot dogs, hamburgers, or chicken patty sandwiches.

**Dates:** Monday - Friday, June 13 - August 12, 2022  
**Ages:** 6 - 12 (Child must be 6 years old by August 12, 2022)

		<u>Weekly Theme</u>
<b>Week 1:</b>	June 13-17	Superheroes
<b>Week 2:</b>	June 21-24* (no camp on Monday, June 20)	Tropicana
<b>Week 3:</b>	June 27-July 1	Mad Scientist
<b>Week 4:</b>	July 5-8* (no camp on Monday, July 4)	Wizards of Sparr
<b>Week 5:</b>	July 11-15	Adventure Land
<b>Week 6:</b>	July 18-22	Around the World in 100 Days
<b>Week 7:</b>	July 25-29	Water World
<b>Week 8:</b>	August 1-5	Jurassic World
<b>Week 9:</b>	August 8-12	Disco Mania

<u>Glendale</u> <u>Resident Fee</u>	<u>Non-Resident Fee</u>	<u>Time</u>
\$65/week/child	\$80/week/child	12:00 p.m. - 6:00 p.m.

\* Fees will be prorated for shorter weeks.

Events and programs may be cancelled due to L.A. County Department of Public Health protocols. For updates, visit [www.glendaleca.gov/LG](http://www.glendaleca.gov/LG).

# Day Camps - Summer

## Summer Blast Camp

**Brand Studios at Brand Park**  
**1601 W. Mountain St., Glendale, CA 91201**  
**For information, call (818) 548-2792**

Camp activities include arts and crafts, sports, games, swimming, a weekly field trip every Tuesday, and movies at camp. Campers must provide their own lunch, drink, and snacks daily. Excursion locations may change. Please visit [www.glendaleca.gov/daycamps](http://www.glendaleca.gov/daycamps) for current information. Parents will need to pre-purchase meal cards or send a prepaid credit card with their child for cashless field trip locations. This will allow campers to purchase food on field trips where no outside food or cash is permitted by the location.

### 5-Day Camp

**Dates:** Monday - Friday, June 13 - August 12, 2022  
**Ages:** 5 - 12 (Child must be 5 years old by August 12, 2022)

#### Tuesday Excursions

<b>Week 1:</b>	June 13-17	Los Angeles Zoo
<b>Week 2:</b>	June 21-24* (no camp on Monday, June 20)	El Capitan Theater
<b>Week 3:</b>	June 27-July 1	Scooter's Jungle
<b>Week 4:</b>	July 5-8* (no camp on Monday, July 4)	Discovery Cube LA
<b>Week 5:</b>	July 11-15	Jump 'n Jammin
<b>Week 6:</b>	July 18-22	California Science Center
<b>Week 7:</b>	July 25-29	Underwood Family Farms
<b>Week 8:</b>	August 1-5	Kidspace Museum
<b>Week 9:</b>	August 8-12	Stone Barn Nature Center

	<u>Glendale</u> <u>Resident Fees</u>	<u>Non-Resident Fees</u>	<u>Times</u>
<b>Full Day</b>	\$120/week/child	\$135/week/child	9:00 a.m. - 4:00 p.m.
<b>Before Care</b>	\$ 20/week/child	\$ 20/week/child	7:00 a.m. - 9:00 a.m.
<b>After Care</b>	\$ 20/week/child	\$ 20/week/child	4:00 p.m. - 6:00 p.m.

\* Fees will be prorated for shorter weeks.



Events and programs may be cancelled due to L.A. County Department of Public Health protocols. For updates, visit [www.glendaleca.gov/LG](http://www.glendaleca.gov/LG).

# Day Camps - Summer

## Summer Spectacular Camp

**Verdugo Park**  
**1621 Canada Blvd., Glendale, CA 91208**  
**For information, call (818) 548-2792**

Camp activities include arts and crafts, sports, games, swimming, a weekly field trip every Wednesday, movies at camp, weekly theme activities, camper choice days and fun with friends. Campers must provide their own lunch, drink, and snacks daily. Excursion locations may change. Please visit [www.glendaleca.gov/daycamps](http://www.glendaleca.gov/daycamps) for current information. Parents will need to pre-purchase meal cards or send a prepaid credit card with their child for cashless field trip locations. This will allow campers to purchase food on field trips where no outside food or cash is permitted by the location.

### 5-Day Camp

**Dates:** Monday - Friday, June 13 - August 12, 2022  
**Ages:** 6 - 14 (Child must be 6 years old by August 12, 2022)

#### Wednesday Excursions

<b>Week 1:</b>	June 13-17	Aquarium of the Pacific
<b>Week 2:</b>	June 21-24* (no camp on Monday, June 20)	Universal CityWalk & IMAX Movie
<b>Week 3:</b>	June 27-July 1	Raging Waters
<b>Week 4:</b>	July 5-8* (no camp on Monday, July 4)	Golf N' Stuff Family Fun Center
<b>Week 5:</b>	July 11-15	John's Incredible Pizza Company
<b>Week 6:</b>	July 18-22	Knott's Soak City USA
<b>Week 7:</b>	July 25-29	Knott's Berry Farm
<b>Week 8:</b>	August 1-5	Raging Waters
<b>Week 9:</b>	August 8-12	Six Flags Magic Mountain

	<u>Glendale</u> <u>Resident Fees</u>	<u>Non-Resident Fees</u>	<u>Times</u>
<b>Full Day</b>	\$150/week/child	\$165/week/child	9:00 a.m. - 6:00 p.m.
<b>Before Care</b>	\$ 20/week/child	\$ 20/week/child	7:00 a.m. - 9:00 a.m.

\* Fees will be prorated for shorter weeks.



Events and programs may be cancelled due to L.A. County Department of Public Health protocols. For updates, visit [www.glendaleca.gov/LG](http://www.glendaleca.gov/LG).



# Specialty Camps - Summer

## Specialty Skate Camps

### Verdugo Skate Park

1621 Cañada Blvd., Glendale, CA 91208

For information, call (818) 548-2786 or (818) 548-2792

**Dates:** Monday - Friday, July 18 - August 12, 2022

**Ages:** 6 - 15 (Child must be 6 years old by August 12, 2022)

**Week 1:** July 18-22

**Week 2:** July 25-29

**Week 3:** August 1-5

**Week 4:** August 8-12

### Wednesday Excursions

Knott's Soak City USA

Knott's Berry Farm

Raging Waters

Six Flags Magic Mountain



## "GROMS" SK8 CAMP (Beginning Level)

The camp includes skating instruction and activities held at the Verdugo Skate Park. In addition, skaters will go on a midweek excursion with the "Shredders" Traveling Sk8 Campers, and will go swimming at Pacific Community Pool one day. Participants must provide their own lunch and water daily (participants may NOT leave the camp site to get food in the area). Skaters must provide their own skateboard, helmet, and elbow and knee pads. Weekly excursions are held on Wednesday. Parents will need to pre-purchase meal cards or send a prepaid credit card with their child for cashless field trip locations. This will allow campers to purchase food on field trips where no outside food or cash is permitted by the location.

	<u>Fee</u>	<u>Time</u>
<b>Full Day</b>	\$225/week/child	9:00 a.m. - 4:00 p.m.
<b>Before Care</b>	\$ 20/week/child	7:00 a.m. - 9:00 a.m.
<b>After Care</b>	\$ 20/week/child	4:00 p.m. - 6:00 p.m.

## "Shredders" Traveling SK8 Camp (Intermediate/Advanced Level)

The camp includes activities at the Verdugo Skate Park, a visit to at least 2 other skate parks per week, swimming, and a midweek excursion. Some of the parks that campers may visit include Montclair, Oxnard, and Duarte Skate Parks. Participants must provide their own lunch and water daily. Skaters must provide their own skateboard, helmet, and elbow and knee pads. No instruction is provided for campers, and they must be able to skate unassisted in various parks to enjoy this camp. Weekly excursions are held on Wednesday. Parents will need to pre-purchase meal cards or send a prepaid credit card with their child for cashless field trip locations. This will allow campers to purchase food on field trips where no outside food or cash is permitted by the location.

	<u>Fee</u>	<u>Time</u>
<b>Full Day</b>	\$325/week/child	9:00 a.m. - 4:00 p.m.
<b>Before Care</b>	\$ 20/week/child	7:00 a.m. - 9:00 a.m.
<b>After Care</b>	\$ 20/week/child	4:00 p.m. - 6:00 p.m.

# Specialty Camps - Summer

## Kool Dayz Coding Camp via CogniCoder

**Pacific Community Center**  
501 S. Pacific Ave., Glendale, CA 91204  
For information, call (818) 548-4098



This 2-week camp in partnership with CogniCoder (cognicoder.com) combines our popular Kool Dayz Summer Camp program at Pacific Community Center and adds an additional enrichment component via CogniCoder and their virtual instruction based computer coding classes. CogniCoder classes are designed and conducted by University of Southern California (USC) Computer Science Department with live instructors virtually.

Your child can enroll into the following class: <Scratch Jr.>, <Scratch>, <Web Dev>, <CyberSecurity>, <Python>, <Java>. Each class is offered in beginner, intermediate, and advanced levels.

Each 2-week session will provide 15 hours of instruction per session. During Sessions 1 and 2 (see below), campers will have two classroom sessions in one day to make up for the holiday closure. Instruction is in addition to Kool Dayz Summer Camp programs and activities which

include arts & crafts, recreation swim, outdoor group games and various summer camp activities.

Lunch will be provided daily between June 21 and August 5, 2022. Lunch will not be provided during the week of August 8 through 12, 2022.

Campers are not required to provide any hardware; however, we recommend each camper bring their own personal plug-in headset with microphone.

**Dates:** Monday - Friday, June 21 - August 12, 2022  
**Time:** 7:00 a.m. - 6:00 p.m.  
**Ages:** 8 - 14 (Child must be 8 years old by August 12, 2022)

### 2-Week Sessions

**Session 1:** June 21 - July 1\* (no camp on June 20)  
**Session 2:** July 5 - 15\* (no camp on July 4)  
**Session 3:** July 18 - 29  
**Session 4:** August 1 - August 12

**Fee:**  
\$328/session/child  
\$328/session/child  
\$345/session/child  
\$345/session/child

\* Fees will be prorated for shorter weeks.

# Specialty Camps - Summer

## Maximum Potential Basketball Summer Break Camp

### Pacific Community Center

501 S. Pacific Ave., Glendale, CA 91204

For information, call (818) 548-4098

Hoopapalooza is designed to help improve an individual's strength, knowledge, and overall development of basketball. Join this camp TODAY and you will be able to fulfill your aspirations. Learn the basics and advanced movements of the game. We will also cover dribbling, passing, shooting, and agility. ALL SKILL LEVELS ARE WELCOME!!!!

Mark Herring of Hoopapalooza Inc. will be the instructor. Coach Herring is a native of North Carolina and has worked with the likes of Coach Kryzewski ("Coash K", Duke University's Men's Basketball Team), Kobe Bryant, Carmelo Anthony, and other NBA Stars. COME JOIN THE FUN!!!!

### 5-Day Camp

**Dates:** Monday - Friday, July 18 - 22, 2022  
**Ages:** 8 - 16

	<u>Number</u>	<u>Fee</u>	<u>Time</u>
<b>Full Day</b>	162430-06	\$150/week/child	9:00 a.m. - 4:00 p.m.
<b>Before Care</b>	162402-06	\$20/week/child	7:00 a.m. - 9:00 a.m.
<b>After Care</b>	162403-06	\$20/week/child	4:00 p.m. - 6:00 p.m.

## Evolution Basketball Summer Camp

### Verdugo Park (South End), on the Basketball Court

1621 Cañada Blvd., Glendale, CA 91208

Evolution Basketball teaches the fundamental movement skills and overall motor skills for basketball. The courses are designed to teach the fundamental concepts of basketball, dribbling and passing, shot techniques, spatial awareness, and teamwork. Levels are age-appropriate, and gradually increase children's ability to help them play the sport of basketball. A jersey is included for all participants.

### Summer Weekday Camps

**Days:** Monday - Friday  
**Time:** 9:00 a.m. - 12:00 p.m.

**FEE:** \$169 (includes jersey)

		<u>Number</u>	<u>Level/Ages</u>
<b>Week 1:</b>	June 27 - July 1	140806-01	Level 2 (5-7 years)
		140806-02	Level 3 (8-12 years)
<b>Week 2:</b>	July 18 - 22	140806-03	Level 2 (5-7 years)
		140806-04	Level 3 (8-12 years)
<b>Week 3:</b>	August 1 - 5	140806-05	Level 2 (5-7 years)
		140806-06	Level 3 (8-12 years)





# Specialty Camps - Summer

## Nature Camp

### Stone Barn Nature Center at Deukmejian Wilderness Park

3429 Markridge Road, Glendale, CA 91214

For information, call (818) 937-7428

Campers will gain appreciation for the nature in their own backyards through exploration of the brand new Stone Barn Nature Center and the rugged 700 acres Deukmejian Wilderness Park has to offer! Each week, campers will have hands-on experiences including guided hikes, sketching in their nature journal, getting up close and personal with a 200-year-old oak tree, practicing wilderness survival skills and may even get a little bit dirty, too! Please send your child in protective outdoor clothing and sturdy shoes, and send lunch, a daily snack, and a refillable water bottle.

**Days:** Monday - Friday

**Ages:** 6 - 12 (Child must be 6 years old by August 12, 2022)

#### Weekly Theme

<b>Session 1:</b>	June 21-24* (no camp on June 20)	The Early Bird and The Worm (Birds & Insects)
<b>Session 2:</b>	June 27-July 1	Plantinvestigators (Plants & Geology)
<b>Session 3</b>	July 5-8* (no camp on July 4)	Slitherin' and Wrigglin' (Mammals & Reptiles)
<b>Session 4:</b>	July 11-15	Wilderness Survival Skills

Session 1: The Early Bird and The Worm: Does the early bird actually get the worm? Come find out at this bird and insect themed week! Your campers will metamorphosis into insect architects, study the grossology of Turkey Vultures, and move through a tarantula obstacle course!

Session 2: Plantinvestigators: Join us as budding naturalists in this plant and geology themed week! Your campers will explore the evidence of past mudslides, become besties with a 200-year-old oak tree, and uncover the mystery of the parasitic plant known as "Witch's Hair"!

Session 3: Slitherin' and Wrigglin': Join us in becoming familiar with the surprising mammals and reptiles that call Deukmejian Wilderness Park home! Your camper will become an expert animal tracker, assist scientists with rattlesnake observations, and become familiar with the infamous grape-loving black bears.

Session 4: Wilderness Survival Skills: It's getting dark and you hear a familiar bear growl. Would you know what to do? Like the Tongva people here before us, your camper will find and examine edible native plants, weave an invasive plant basket and build their own shelter!

	<u>Glendale Resident Fees</u>	<u>Non-Resident Fees</u>	<u>Times</u>
<b>Full Day</b>	\$200/week/child	\$215/week/child	9:00 a.m. - 4:00 p.m.
<b>Before Care</b>	\$ 20/week/child	\$ 20/week/child	7:00 a.m. - 9:00 a.m.
<b>After Care</b>	\$ 20/week/child	\$ 20/week/child	4:00 p.m. - 6:00 p.m.

\* Fees will be prorated for shorter weeks.

# Specialty Camps - Summer / Day Camps - Thanksgiving Break

## Yoga & Arts Summer Camp

**Joe Bridges Clubhouse at Glenoaks Park**  
2531 E. Glenoaks Blvd., Glendale, CA 91206  
For information, call (818) 548-2184

Breathe, relax, and stretch in the fresh park air before beginning art projects inspired by the Masters in various media. Each day starts with amusing kid's yoga to relax and prepare the imagination for inspired artistic creations. Students will learn drawing, painting, shading techniques and more. Bring a yoga mat or large towel (labeled with name), water and lunch. Drop-off time will start at 8:30 a.m. **Material fee \$20 payable to instructor.**

**Instructor: Ann Marie Smith**

**Days:** Monday - Friday

**Ages:** 6 - 14 (Child must be 6 years old by July 1, 2022)

**Session 1:** June 20 - 24

**Session 2:** June 27 - July 1

**Fee**

\$ 75/child

**Time**

9:00 a.m. - 1:00 p.m.



## Kool Dayz Thanksgiving Camp

**Pacific Community Center**  
501 S. Pacific Ave., Glendale, CA 91204  
For information, call (818) 548-4098

***Not sure what to do with your child(ren) the week of Thanksgiving? Kool Dayz Camp is here for you!*** Kids will have fun making crafts, playing sports and games, competing in contests and making new friends. Campers must provide their own lunch, drink and snacks daily.

### **3-Day Camp**

**Dates:** Monday - Wednesday, November 21 - 23, 2022  
(No camp Thursday, November 24 and Friday, November 25, 2022.)

**Ages:** 6 -14

	<b><u>Glendale Resident Fees</u></b>	<b><u>Non-Resident Fees</u></b>	<b><u>Times</u></b>
<b>Full Day</b>	\$51/week/child	\$60/week/child	9:00 p.m. - 4:00 p.m.
<b>Before Care</b>	\$12/week/child	\$12/week/child	7:00 a.m. - 9:00 a.m.
<b>After Care</b>	\$12/week/child	\$12/week/child	4:00 p.m. - 6:00 p.m.

Events and programs may be cancelled due to L.A. County Department of Public Health protocols. For updates, visit [www.glendaleca.gov/LG](http://www.glendaleca.gov/LG).



# Youth & Family Services



## YOUTH & FAMILY SERVICES PROGRAM

**Pacific Community Center, 501 S. Pacific Ave., Glendale, CA 91204**

**Hours: Monday - Friday, 9:00 a.m. - 6:00 p.m.**

**For more information, contact John Maghaguian, (818) 937-7247 | [jmaghaguian@glendaleca.gov](mailto:jmaghaguian@glendaleca.gov).**

The Youth & Family Services Program is designed to provide free information and referral services to at-risk youth and their families. The program supports the family unit by providing guidance in decision-making and by connecting individuals to supportive services in the community.

### **Eligibility for Programs:**

Youth 13 - 17 years of age and young adults 18 - 21.

No income or residency requirements.

Self-referrals and referrals from local agencies are accepted.

### **Youth Case Management:**

Information & referral, utility assistance, connecting individuals to community providers regarding a variety of social issues which include, but are not limited to: employment, community service, health & wellness, housing/unstable living situations, and legal matters.

### **Juvenile Ultimatum Service Training (J.U.S.T.):**

A service component that provides youth the opportunity to complete mandated community service hours through a balanced and restorative justice, community service learning, community protection and competency development process.



# Youth & Family Services

Instagram



## Follow us on Instagram @MyGlendaleTeens

Follow us on Instagram to find out the latest information on volunteer and job opportunities, special events, educational workshops, and places for teens to hang out!

You can also receive the latest updates on the City of Glendale by following @MyGlendaleTeens.

For more information, contact:

John Maghaguian

(818) 937-7247 | [imaghaguian@glendaleca.gov](mailto:imaghaguian@glendaleca.gov)

## Do You Want to Earn Community Service Hours for School and Become a Teen Volunteer?

1. Are you at least 14 years old?
2. Can you commit to 50 hours per year?
3. Do you have one of the following forms of identification?
  - ◆ California Driver License
  - ◆ California Identification Card
  - ◆ U.S. Passport
  - ◆ Military Identification Card
  - ◆ Green Card
4. Can you volunteer on weekends?

If you answered yes to all of these questions, please contact John Maghaguian at (818) 937-7247 or [imaghaguian@glendaleca.gov](mailto:imaghaguian@glendaleca.gov).



Events and programs may be cancelled due to L.A. County Department of Public Health protocols. For updates, visit [www.glendaleca.gov/LG](http://www.glendaleca.gov/LG).

# TEEN NIGHT OUT

5:00 P.M. – 9:00 P.M.

For ages 13 -18

FREE SNACKS, REFRESHMENTS & PRIZES

**HANG OUT WITH YOUTH & FAMILY SERVICES  
EVERY FRIDAY NIGHT, AND ENJOY PING PONG,  
PS 4, POOL, AND KARAOKE.**

## LOCATION AND DATES

**PACIFIC COMMUNITY CENTER  
501 S. PACIFIC AVE.  
GLENDALE, CA 91204**

**JUNE 3, 10, 17, 24, 2022**

**JULY 8, 15, 22, 29, 2022**

**AUGUST 5, 12, 19, 26, 2022**



To register or for more information, call or email Community Services Supervisor,  
John Maghaguian, at (818) 937-7247 or [jmaghaguian@glendaleca.gov](mailto:jmaghaguian@glendaleca.gov).



# Drop-In Programs

## Therapeutic Recreation

Maple Park Community Center, 820 E. Maple St., Glendale, CA 91205  
For program information, please call (818) 548-3783.

### Club Maple

Club Maple is a free program open to adults with intellectual disabilities which provides an opportunity for individuals to experience positive, healthy, recreational, cultural, educational, and social experiences. Activities are age and skill appropriate.

**Ages:** 18 and older  
**Day:** Thursdays  
**Time:** 5:30 p.m. - 8:00 p.m.

### Maple Inclusive Play Day

Maple Inclusive Play Day (MIP Day) creates an opportunity for families with children of all abilities to come to the park, network with each other and allow their children to socialize, all centered around the new Shane's Inspiration all-inclusive playground. Crafts appropriate to all abilities will be available.

**Day:** Third Saturday of each month  
**Dates:** June 18, 2022 | July 16, 2022 | August 20, 2022  
**Time:** 11:00 a.m. - 1:00 p.m.



Events and programs may be cancelled due to L.A. County Department of Public Health protocols. For updates, visit [www.glendaleca.gov/LG](http://www.glendaleca.gov/LG).



# Drop-In Programs

## Youth Programs

### Tot Time

Tot time is a FREE drop-in program for preschoolers (ages 5 and under) and their parents. The center provides play equipment and toys while parents provide the supervision. No registration required.

**Location:** Pacific Community Center, 501 S. Pacific Ave., Glendale, CA 91204

**Days:** Tuesdays and Thursdays

**Time:** 10:00 a.m. - 12:00 p.m.

*Pacific Park Library offers stories and crafts on Thursdays from 10:30 a.m. - 11:00 a.m.*

**For program information, please call (818) 548-4098.**

### Maple Park Recreation Club

The Maple Park Recreation Club is a free and fun drop-in program for children ages 8 to 17. Recreation Leaders provide general supervision and programming. Maple Park Community Center offers a recreation room with foosball, ping pong, and other gaming activities. There is a computer lab with internet and video games. There is also a full-court gymnasium which offers drop-in basketball for youth.

**Location:** Maple Park Community Center, 820 E. Maple St., Glendale, CA 91205

**Days:** Monday through Friday

**Time:** 2:30 p.m. - 5:00 p.m.

#### SUMMER BREAK EXTENDED HOURS

**Dates:** June 13 - August 12, 2022

**Days/Time:** Monday - Friday, 12:30 p.m. - 5:00 p.m.

*A responsible adult/guardian must accompany all children under eight (8) years of age. This program is designed to provide supplemental activities for your child and not to provide childcare.*

**For more information, please call (818) 548-3694.**



# Trails & Open Space Programs

## INTERPRETIVE HIKES AND PROGRAMS

For information or to RSVP, please click on the links below or visit [www.glendaleca.gov/trails](http://www.glendaleca.gov/trails).



**Campfire Program, "Coyotes"**  
Deukmejian Wilderness Park  
3429 Markridge Road., Glendale, CA 91214  
[Saturday, July 23, 2022](#)  
6:00 p.m. - 8:00 p.m.

The July Campfire Program will focus on coyotes. Learn about their behaviors, habitats, and how they communicate. You will also learn how you can protect your pets from coyotes and avoid coyote conflicts. Arrive at 6:00 p.m. to make a craft or join us at 6:30 p.m. for the campfire. There will be songs, skits, smiles and s'mores. This event is FREE, but you must RSVP by clicking on the event date above or visiting [www.glendaleca.gov/campfire](http://www.glendaleca.gov/campfire).

**Friday Night Lecture, "Old Crescenta Valley in Photos"**  
Deukmejian Wilderness Park  
3429 Markridge Road., Glendale, CA 91214  
[Friday, August 12, 2022](#)  
6:30 p.m. - 8:30 p.m.

Join Mike Lawler as he shares historic photos of the Crescenta Valley from the collections of the Glendale Library and the Historical Society of the Crescenta Valley. Every picture tells a story, but Mike will add details that may surprise you. Included will be early photographs of the Stone Barn Nature Center and the vineyards surrounding it. Mike Lawler has written several books on the history of the Crescenta Valley and writes a local history column in the CV Weekly paper. He is the past president of the Historical Society of the Crescenta Valley. This event is FREE, but you must RSVP by clicking on the date above or visiting [www.glendaleca.gov/cvphotos](http://www.glendaleca.gov/cvphotos).

**Please call (818) 548-3795 if you have any questions or need assistance.**

All Trails & Open Space programs are sponsored by the  
[Glendale Parks & Open Space Foundation](#).

To sign up for the Trails & Open Space Program newsletter, please visit [www.glendaleca.gov/trails](http://www.glendaleca.gov/trails).

Events and programs may be cancelled due to L.A. County Department of Public Health protocols. For updates, visit [www.glendaleca.gov/LG](http://www.glendaleca.gov/LG).



# Trails & Open Space Programs

## VOLUNTEER WORKDAYS

For information or to RSVP, please click on the links below or visit [www.glendaleca.gov/trails](http://www.glendaleca.gov/trails).

### RIVERWALK WORKDAYS

Glendale Narrows Riverwalk

Corner of Paula Avenue and Garden Street

Saturdays: [June 11, 2022](#) | [July 9, 2022](#) | [August 13, 2022](#)

8:00 a.m. - 11:00 a.m.

Join us down by the riverside as we work to remove invasive plants from the landscaped areas along the L.A. River. Participants are asked to wear sturdy shoes, protective clothing, and bring a hat. We'll provide tools, gloves, drinks and snacks. Families, individuals, clubs, and students needing community service hours are welcome. Please RSVP by clicking on the event date above or visiting [www.glendaleca.gov/trails](http://www.glendaleca.gov/trails).

### WILDERNESS WORKDAYS

Deukmejian Wilderness Park

3429 Markridge Road., Glendale, CA 91214

Saturdays: [June 18, 2022](#) | [July 16, 2022](#) | [August 20, 2022](#)

8:00 a.m. - 11:00 a.m.

Help us water our big cone spruce and live oaks, assist with trail repairs, and remove invasive species from the park. This program is perfect for students who need community service hours. Community and youth organizations are welcome. Please wear sturdy shoes, protective clothing and a hat. Drinks and snacks will be provided. In case of rain, this event will be cancelled. Please RSVP by clicking on the event date above or visiting [www.glendaleca.gov/trails](http://www.glendaleca.gov/trails).

### Milkweed Planting/Monarch Recovery Project

Deukmejian Wilderness Park

3429 Markridge Road, Glendale, CA 91214

[Saturday, June 25, 2022](#)

9:00 a.m. - 12:00 p.m.



Save the monarch butterflies! Help plant native milkweed at Deukmejian Wilderness Park to provide habitat and food for monarch caterpillars and butterflies. Community Services & Parks is partnering with the Arroyos & Foothills Conservancy (AFC) as part of AFC's Monarch Recovery Project. We'll provide tools, gloves, drinks and snacks. Participants are asked to wear sturdy shoes, protective clothing, and bring a hat. Families, individuals, clubs, and students needing community service hours are welcome. In case of rain, this workday will be cancelled. Please RSVP by clicking on the event date above or visiting [www.glendaleca.gov/milkweed](http://www.glendaleca.gov/milkweed).





# Verdugo Skate Park Programs



Verdugo Park  
1621 Cañada Blvd.  
(south end)  
(818) 548-2786

## GO SKATE DAY 2022

Join us for International Skate Day! Take part in this global day of skate to celebrate one of the coolest activities in the world. Start a new hobby, or come show off your skills. Skate Contest! Raffles! Prizes! Music! Fun for all!

**Date:** Tuesday, June 21, 2022

**Time:** 4:00 p.m. - 8:00 p.m.



## SKATE CLASSES

- ♦ All classes are monthly, and occur on the first 4 Saturdays of the month.

### Beginning Youth Class

**Fee:** \$249 / month      **Ages:** 5+      **Day:** Saturdays      **Time:** 9:00 a.m. - 10:20 a.m.

Students will learn balance, using the skateboard for transportation, beginner tricks, safety, skate park etiquette. Helmet, elbow pads, knee pads, and wrist guards are required to participate.

### Intermediate Youth Class

**Fee:** \$249 / month      **Ages:** 5+      **Day:** Saturdays      **Time:** 10:30 a.m. - 11:50 a.m.

Students will learn more advanced tricks and learn about skateboard style. Helmet, elbow pads, knee pads, and wrist guards are required to participate.

### Beginning Adult Class

**Fee:** \$249 / month      **Ages:** 17+      **Day:** Saturdays      **Time:** 9:00 a.m. - 10:20 a.m.

Focusing on safety and skateboard fundamentals, this class is fantastic for beginners to learn how to ride a skateboard. Learn skateboard safety, balance, pushing, turning, and cool tricks. Helmet, elbow pads, knee pads, and wrist guards are required to participate.

Please check our website at [www.myglendaleparks.com](http://www.myglendaleparks.com) (keyword search "skate") for more information. You can register online as classes become available.

# Verdugo Skate Park Programs

## VERDUGO SKATE PARK

Verdugo Park (south end)  
1621 Cañada Blvd.  
Glendale, CA 91208  
(818) 548-2786

### HOURS OF OPERATION:

#### Before June 12 & as of August 13, 2022

Monday – Friday: 3:00 p.m. - 9:00 p.m. (for all ages)  
Saturday: 12:00 p.m. - 9:00 p.m. (for all ages)  
Sunday: 10:00 a.m. - 12:00 p.m. (14 & under\*)  
12:00 p.m. - 9:00 p.m. (for all ages)

#### June 13 - July 17, 2022

Monday – Friday: 2:00 p.m. - 9:00 p.m. (for all ages)  
Saturday: 12:00 p.m. - 9:00 p.m. (for all ages)  
Sunday: 10:00 a.m. - 12:00 p.m. (14 & under\*)  
12:00 p.m. - 9:00 p.m. (for all ages)

#### July 18 - August 12, 2022

Monday – Friday: 4:00 p.m. - 9:00 p.m. (for all ages)  
Saturday: 12:00 p.m. - 9:00 p.m. (for all ages)  
Sunday: 10:00 a.m. - 12:00 p.m. (14 & under\*)  
12:00 p.m. - 9:00 p.m. (for all ages)

*\*From 10:00 a.m.-12:00 p.m. on Sundays, parents may skate with their children for instructional purposes. This is at the safety discretion of skate staff.*

### FEES:

	Youth (17 & Under) & Resident Adults (18 & Over)	Non-Resident Adults (18 & Over)
Daily Entry	Free	\$ 4
Monthly Pass	N/A	\$40
Annual Pass	N/A	\$75

### FEATURES:

15,000 square foot concrete facility: 6 - 9 foot Clover Bowl with 11 foot Over-Vert section, 6 - 10 foot Kidney Pool, Street Plaza with rails and ledges, and a Snake Run that empties into a 9 foot bowl with a Loveseat.

**ALL PERSONS ENTERING THE PARK MUST WEAR A HELMET, KNEE PADS AND ELBOW PADS.**

All skaters must have a valid release of liability form on file.  
**(Youth ages 17 and under are required to have parent/guardian signature.)**

**BMX bikes, scooters or other coasting devices are NOT permitted.**

Follow us on Instagram @verdugoskatepark

Events and programs may be cancelled due to L.A. County Department of Public Health protocols. For updates, visit [www.glendaleca.gov/LG](http://www.glendaleca.gov/LG).





# Aquatics



## CITY OF GLENDALE'S PACIFIC COMMUNITY POOL IS OPEN YEAR ROUND

### Pacific Community Pool

509 S. Pacific Ave.  
Glendale, CA 91204

**(818) 937-7433**

**[www.GlendaleAquatics.com](http://www.GlendaleAquatics.com)**



**JOIN US FOR LESSONS, SWIM TEAM, WATER POLO, JUNIOR  
LIFEGUARD, AND RECREATION & LAP SWIM!**



**Parks  
Make  
Life  
Better!**



@MyGlendaleParks

[www.GlendaleCA.gov](http://www.GlendaleCA.gov)

Events and programs may be cancelled due to L.A. County Department of Public Health protocols. For updates, visit [www.glendaleca.gov/LG](http://www.glendaleca.gov/LG).



## SUMMER AQUATICS PROGRAM

For program descriptions, lesson times, and fees, please visit our website at [www.glendaleaquatics.com](http://www.glendaleaquatics.com) or call (818) 937-7433. Pool and wading pool locations are subject to closure during inclement weather conditions and/or in the event of water contamination.

### PACIFIC COMMUNITY POOL

Join us for our Summer 2022 Aquatics Program, beginning on June 13, 2022, at Pacific Community Pool, 509 S. Pacific Ave., Glendale, CA 91204

**Dates: June 13 - September 1, 2022**

#### **Programs/Events:**

- Recreation swim
- Instructional swim lessons for children and adults
- Glendale Gators Swim Club
- Glendale Polo Bears Water Polo Team
- Junior Lifeguard Academy
- Lap swim
- Special aquatics events



### WADING POOLS

Free fun in the sun for children 8 years of age and younger. Parent participation is required. Inflatables and pool toys will only be allowed at the discretion of the lifeguard on duty. In the event of maximum capacity being reached, children will be allowed access to the pool on a rotating schedule.

**Dates: June 14 – August 17, 2022 (Closed July 4)**

**Hours:** Monday through Thursday 12:00 p.m. - 6:00 p.m.  
Friday, Saturday, and Sunday, 1:30 p.m. - 6:30 p.m.

#### **Locations:**

**Brand Park, 1601 W. Mountain St.  
Wednesday & Saturday**

**Glenoaks Park, 2531 Glenoaks Blvd.  
Monday & Saturday**

**Dunsmore Park, 4700 Dunsmore Ave.  
Thursday & Sunday**

**Fremont Park, 600 W. Hahn Ave.  
Tuesday & Sunday**

**Palmer Park, 610 E. Palmer Ave.  
Friday & Saturday**

Wading pools are available for private rentals outside of the scheduled hours of operation, June through September, depending on facility and staff availability.

- The rental fee is \$100 for the first hour of swim time.
- There is a \$25 fee for each additional hour of swim time.
- One lifeguard is included in the rental fee.

For information and booking, call (818) 937-7440.

## SUMMER SWIM LESSON REGISTRATION (June - August)

Registration for group and private swim lessons begins soon!  
For a detailed program schedule, visit [www.glendaleaquatics.com](http://www.glendaleaquatics.com).

Glendale Resident Registration begins Tuesday, May 17, at 9:00 a.m.  
General Registration begins Thursday, May 19, at 9:00 a.m.

ALL CUSTOMERS WILL BE REQUIRED TO PROVIDE 2022 PROOF OF RESIDENCY BEGINNING MARCH 21, 2022, IN ORDER TO RECEIVE RESIDENT RATES FOR THIS SUMMER. PRE-REGISTERING FOR YOUR RESIDENCY STATUS IS **REQUIRED** FOR REGISTRATION AS A RESIDENT.

**Please note that Glendale residents will NOT receive the resident rates unless you have pre-registered for your residency status PRIOR to registration. Non-verified residents who choose to register and pay the non-resident rates will NOT be provided a refund for any non-resident rates already paid.**

**Online** registration is available at [www.myglendaleparks.com](http://www.myglendaleparks.com).

### **STEPS FOR SUMMER SWIM LESSON REGISTRATION (GROUP AND PRIVATE CLASSES):**

**#1- Establish or Ensure you have an active RecTrac account:** Go to the online registration portal ([www.myglendaleparks.com](http://www.myglendaleparks.com)) to create an ONLINE REGISTRATION ACCOUNT. Make sure to add your children as members of the household. Once you have a valid online registration account, be sure to log in with your user name and password in order to successfully complete online registration. Call (818) 937-7433 or (818) 548-2184 for username and password assistance.

**#2- Pre-register for residency status:** You may pre-register for 2022 residency status beginning March 21, 2022 by emailing a copy of your utility bill or rental agreement to [CSPCustomerService@glendaleca.gov](mailto:CSPCustomerService@glendaleca.gov). Please include your full name, valid address, and a copy of the proof (utility bill or rental agreement) in the email. Emails will be reviewed within two (2) business days, and you will receive an email response confirming residency when it has been completed. You may also pre-register in person during business hours at Pacific Community Pool, 509 S. Pacific Ave., Glendale, CA 91204.

**#3- Register online:** When registration opens at 9 a.m. on May 17 for residents, or at 9 a.m. on May 19 for everyone, you are now ready to proceed because you should have already done the following:

- Confirmed residency has been verified
- Ensured you have a valid username and password for [myglendaleparks.com](http://myglendaleparks.com)
- Verified you can log into your online registration account for [myglendaleparks.com](http://myglendaleparks.com)



# Splash Pads

## SPLASH PADS



Splash pad water features will be open this summer! These are free water features for children, and are available to any park visitor.

### Locations:

#### **Cerritos Park**

3960 San Fernando Rd.  
Glendale, CA 91204

#### **Pacific Park**

501 S. Pacific Ave.  
Glendale, CA 91204

### Dates/Hours:

May 28 - September 18, 2022

11:00 a.m. - 6:00 p.m.

Monday - Sunday (Daily)

September 24 - October 16, 2022

11:00 a.m. - 6:00 p.m.

Saturdays & Sundays only



# Contract Class Information

## SUMMER 2022 SESSION DATES

Enrollment begins: May 9, 2022

Classes begin: June 13, 2022

Last day to enroll for open classes: June 25, 2022

(Classes that do not meet the minimum number of students may be cancelled.)

See next page for Registration Information, or call (818) 548-2184.

## CLASS LOCATIONS

### **Adult Recreation Center (ARC)**

Central Park Complex  
201 E. Colorado St.  
Glendale, CA 91205

### **Brand Studios**

1601 W. Mountain St.  
Glendale, CA 91201

### **Chevy Chase Library**

3301 E. Chevy Chase Dr.  
Glendale, CA 91206

### **Crescenta Valley High School**

2900 Community Ave.  
La Crescenta, CA 91214

### **Deukmejian Wilderness Park**

3429 Markridge Rd.  
Glendale, CA 91214

### **Dunsmore Community Building & Park**

4700 Dunsmore Ave.  
La Crescenta, CA 91214

### **Glendale Community College**

1500 N. Verdugo Rd.  
Glendale, CA 91208

### **Glendale Sports Complex**

2200 Fern Lane  
Glendale, CA 91208

### **Glorietta Park**

2801 N. Verdugo Rd.  
Glendale, CA 91208

### **Griffith Manor Community Building**

1551 Flower St.  
Glendale, CA 91201

### **Hoover High School**

651 Glenwood Rd.  
Glendale, CA 91202

### **Joe Bridges Clubhouse**

(In Glenoaks Park)  
2531 E. Glenoaks Blvd.  
Glendale, CA 91206

### **Maple Park Community Center**

820 E. Maple  
Glendale, CA 91205

### **Montrose Park**

3529 Clifton Pl.  
Glendale, CA 91208

### **Pacific Community Center & Pool**

501 - 509 S. Pacific Ave.  
Glendale, CA 91204

### **Scholl Canyon Golf & Tennis**

3800 E. Glenoaks Blvd.  
Glendale, CA 91206

### **Sparr Heights Community Center**

1613 Glencoe Way  
Glendale, CA 91208

### **Verdugo Skate Park**

1621 Cañada Blvd.  
(south end)  
Glendale, CA 91208

# Registration Information



[www.myglendaleparks.com](http://www.myglendaleparks.com)



Contact the Customer Service office at (818) 548-2184  
Monday - Friday 8:30 a.m. - 5:00 p.m.

## **ONLINE REGISTRATION**

Our online registration service allows you to register for activities through the internet **24 hours a day, 7 days a week**. Below you will find instructions that will help you establish a customer account, ID# and a password. Please read all the information online, especially sections regarding **residency and refunds**.

**Step 1:** Find our website: [www.myglendaleparks.com](http://www.myglendaleparks.com).

**Step 2:** Log in with your credentials. If you have never logged in before, set up an online account. Be sure to add all of your family members. If you have forgotten your login credentials, please call (818) 548-2184 or email [CSPcustomerservice@glendaleca.gov](mailto:CSPcustomerservice@glendaleca.gov).

**Step 3:** Browse activities. Click on Activity Search, and Search Activities.

**Step 4:** Select activities by clicking on the shopping cart icon.

**Step 5:** Pay for activities by clicking on shopping cart on the top right of your screen.

### **REGISTRATION REFUND POLICY**

- Refunds are not available online.
- Contract classes or activities not reaching minimum numbers by the first week of classes may be cancelled and fees refunded. Service fees will not be refunded, in the event of class cancellation.
- Full refund, less an administrative fee, may be given if a refund is requested prior to start of programs/classes.
- Refunds requested after start of the program/class are contingent upon City approval and will only be considered through the conclusion of second week of scheduled class or second day of camp, and will be prorated.
- No refunds offered for Aquatics programs or classes.

For more information,  
call (818) 548-2752 or (818) 548-2184.

## **REGISTRATION LOCATIONS:**

Register for Classes & Camps at  
any one of the following locations:

### **Civic Auditorium**

(In person, phone, and online registrations will be accepted.)  
1401 North Verdugo Rd., Glendale, 91208  
(818) 548-2752 or (818) 548-2184

[www.myglendaleparks.com](http://www.myglendaleparks.com)

### **Adult Recreation Center Central Park Complex**

201 E. Colorado St., Glendale, CA 91205  
(818) 548-3775

### **Glendale Sports Complex**

2200 Fern Lane, Glendale, CA 91208  
(818) 548-6420

### **Maple Park Community Center**

820 E. Maple St., Glendale, CA 91205  
(818) 548-3783

### **Pacific Community Center & Pool**

501-509 South Pacific Ave., Glendale, CA 91204  
(818) 548-4098; (818) 937-7433

### **Sparr Heights Community Center**

1613 Glencoe Way, Glendale, CA 91208  
(818) 548-2187

# Youth Classes

## Youth Classes

### **HIP HOP FOR KIDZ New location this summer!**

Hip Hop dance is back by popular demand! Students will become confident, and by learning 5 dance styles including: Ballet, Hip Hop, Modern, Jazz, and Freestyle. We also play fun dancing games, and dance to the hottest music of today! Sign Up Now!

**4 weeks      Fee: \$90      Instructor: Talented Arts®**

**First 4-week session: June 15 - July 6, 2022**

<u>Ages</u>	<u>Number</u>	<u>Location</u>	<u>Begins</u>	<u>Day</u>	<u>Time</u>
5-10	130703-01	Griffith Manor	6/15	W	5:00 p.m. - 6:00 p.m.
11-15	130704-01	Griffith Manor	6/15	W	6:00 p.m. - 7:00 p.m.

**Second 4-week session: July 13 - August 3, 2022**

<u>Ages</u>	<u>Number</u>	<u>Location</u>	<u>Begins</u>	<u>Day</u>	<u>Time</u>
5-10	130703-02	Griffith Manor	7/13	W	5:00 p.m. - 6:00 p.m.
11-15	130704-02	Griffith Manor	7/13	W	6:00 p.m. - 7:00 p.m.



### **PARENT AND CHILD ART New location this summer!**

Adult and child share creative time together using paint, paper, clay and found objects. Students will learn basic art techniques and vocabulary while painting, printmaking, clay making, creating collage and fantasy crafting. The instructor encourages freedom of expression and creativity. Classes also include games, songs, sharing books, story time, and show and tell. Class may be held outdoors.

**\$6 material fee is payable on the first day of class.**

**6 weeks**

**Fee: \$65**

**Instructor: Aleka Corwin**

<u>Ages</u>	<u>Number</u>	<u>Location</u>	<u>Begins</u>	<u>Day</u>	<u>Time</u>
2 - 5	130502-01	Griffith Manor	6/16	Th	11:00 a.m. - 12:00 p.m.





## Youth Sports

### EVOLUTION BASKETBALL

Evolution Basketball teaches the fundamental movement skills and overall motor skills for basketball. The courses are designed to teach the fundamental concepts of basketball, dribbling and passing, shot techniques, spatial awareness, and teamwork. Levels are age-appropriate, and gradually increase children's ability to help them play the sport of basketball. A jersey is included for all participants.

**LOCATION:** Verdugo Park (South End), on the Basketball Court  
1621 Cañada Blvd., Glendale, CA 91208

#### 5 WEEKS

**FEE:** \$99

**DATES:** Fridays, May 13 - June 10, 2022

<u>Number</u>	<u>Level/Ages</u>	<u>Times</u>
440805-04	Level 2 (5-7 years)	4:00 p.m. - 4:45 p.m.
440805-05	Level 3 (8-11 years)	4:45 p.m. - 5:30 p.m.
440805-06	Level 1 (4-5 years)	5:30 p.m. - 6:00 p.m.
440805-07	Level 2 (5-7 years)	6:05 p.m. - 6:50 p.m.

**DATES:** Fridays, July 8 - August 5, 2022

<u>Number</u>	<u>Level/Ages</u>	<u>Times</u>
140805-04	Level 2 (5-7 years)	4:00 p.m. - 4:45 p.m.
140805-05	Level 3 (8-11 years)	4:45 p.m. - 5:30 p.m.
140805-06	Level 1 (4-5 years)	5:30 p.m. - 6:00 p.m.
140805-07	Level 2 (5-7 years)	6:05 p.m. - 6:50 p.m.



### MAXIMUM POTENTIAL BASKETBALL



Hoopapalooza is designed to help improve an individual's strength, knowledge, and overall development of basketball. Join this class TODAY and you will be able to fulfill your aspirations. Learn the basics and advanced movements of the game. We will also cover dribbling, passing, shooting, and agility. ALL SKILL LEVELS ARE WELCOME!!!!

Mark Herring of Hoopapalooza Inc. will be the instructor. Coach Herring is a native of North Carolina and has worked with the likes of Coach Krzyzewski ("Coach K", Duke University's Men's Basketball Team), Kobe Bryant, Carmelo Anthony, and other NBA Stars. COME JOIN THE FUN!!!!

**6 WEEKS**

**Fee: \$150**

**Instructor: Mark Herring**

<u>Ages</u>	<u>Number</u>	<u>Location</u>	<u>Begins</u>	<u>Day</u>	<u>Time</u>
8-16	260601-01	Pacific CC	9/15	Th	5:30 p.m. – 6:30 p.m.

# Youth Sports

## KIDZ LOVE SOCCER

[WWW.KIDZLOVESOCCER.COM](http://WWW.KIDZLOVESOCCER.COM)



This instructional soccer experience includes age appropriate activities, skill demonstrations, fun games, and instructional scrimmages conducted in a non-competitive, recreational format. This class is perfect for first time players while being fun and engaging for kids with some experience. **Shin guards are required.**

**Excessive Heat and Rainout Hotline #: (888) 372-5803. Call this number up to 30 minutes prior to any scheduled class to verify class status.** *If a class is cancelled due to weather and/or another City program, the class will be made up at the end of the session.*

### 7 WEEKS

**FEE: \$120**

**All participants will receive a soccer jersey.**

**LOCATION:** Glorietta Park, 2801 N. Verdugo Rd., Glendale, CA 91208

**DAY/SESSION DATES:** Saturdays, June 11 - July 30, 2022

<u>Number</u>	<u>Class Title</u>	<u>Age</u>	<u>Time</u>
141201-02	Mommy/Daddy/Me	2 - 3.5	9:00 a.m. – 9:30 a.m.
141202-02	Tot Soccer	3.5 - 4	9:35 a.m. – 10:05 a.m.
141202-03	Pre Soccer	4 - 5	10:10 a.m. – 10:45 a.m.
141203-02	Soccer 1	5 - 6	10:50 a.m. – 11:35 a.m.
141204-01	Soccer 2	7 - 10	11:40 a.m. – 12:25 p.m.



# Youth Sports

## YOUTH TENNIS CLASSES ~ NEW KICK-OFF SEASON!

### Fit Fun Tennis – [thetennisplace.net](http://thetennisplace.net)

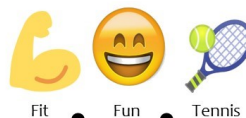
Fit Fun Tennis is a community tennis program hosted by The Tennis Place, Inc. Our qualified instructors focus on the fundamentals of tennis with an emphasis on FUN! All of our classes teach tennis-specific movements and proper technique. You'll be challenged to improve at your own pace while getting a great workout and meeting other tennis players in the community.



**6 WEEKS**    **FEE: \$150**    **AGES: 4 - 18**

**LOCATIONS:** Montrose Park Tennis Court, 3529 Clifton Pl., Glendale, CA 91208  
Emerald Isle Park Tennis Court, 2130 Lenore Dr., Glendale, CA 91206

**SESSION DATES:** Mondays, May 2 - June 13, 2022 (No class Monday, May 30)  
Tuesdays, May 3 - June 7, 2022  
Wednesdays, May 4 - June 8, 2022  
Thursdays, May 5 - June 9, 2022



### SKILL LEVEL: TINY TOTS (ages 4 – 6)

<u>Number</u>	<u>Day of Week</u>	<u>Location</u>	<u>Time</u>
441106-01	Mondays	Emerald Isle Park	2:30 p.m. – 3:30 p.m.
441106-02	Tuesdays	Montrose Park	2:30 p.m. – 3:30 p.m.
441106-03	Wednesdays	Emerald Isle Park	2:30 p.m. – 3:30 p.m.
441106-04	Thursdays	Montrose Park	2:30 p.m. – 3:30 p.m.

### SKILL LEVEL: BIG HITTERS (ages 7 – 9)

<u>Number</u>	<u>Day of Week</u>	<u>Location</u>	<u>Time</u>
441107-01	Mondays	Emerald Isle Park	3:30 p.m. – 4:30 p.m.
441107-02	Tuesdays	Montrose Park	3:30 p.m. – 4:30 p.m.
441107-03	Wednesdays	Emerald Isle Park	3:30 p.m. – 4:30 p.m.
441107-04	Thursdays	Montrose Park	3:30 p.m. – 4:30 p.m.

### SKILL LEVEL: JR. DEVELOPMENT I BEGINNER (ages 10 – 12)

<u>Number</u>	<u>Day of Week</u>	<u>Location</u>	<u>Time</u>
441108-01	Mondays	Emerald Isle Park	4:30 p.m. – 5:30 p.m.
441108-02	Tuesdays	Montrose Park	4:30 p.m. – 5:30 p.m.

### SKILL LEVEL: JR. DEVELOPMENT I INTERMEDIATE (ages 10 – 12)

<u>Number</u>	<u>Day of Week</u>	<u>Location</u>	<u>Time</u>
441109-01	Wednesdays	Emerald Isle Park	4:30 p.m. – 5:30 p.m.
441109-02	Thursdays	Montrose Park	4:30 p.m. – 5:30 p.m.

### SKILL LEVEL: JR. DEVELOPMENT II BEGINNER (ages 13 - 18)

<u>Number</u>	<u>Day of Week</u>	<u>Location</u>	<u>Time</u>
441110-01	Mondays	Emerald Isle Park	5:30 p.m. – 6:30 p.m.
441110-02	Tuesdays	Montrose Park	5:30 p.m. – 6:30 p.m.

### SKILL LEVEL: JR. DEVELOPMENT II INTERMEDIATE (ages 13 - 18)

<u>Number</u>	<u>Day of Week</u>	<u>Location</u>	<u>Time</u>
441111-01	Wednesday	Emerald Isle Park	5:30 p.m. – 6:30 p.m.
441111-02	Thursday	Montrose Park	5:30 p.m. – 6:30 p.m.



# Youth Sports

## YOUTH TENNIS CLASSES - SUMMER CLASSES

### Fit Fun Tennis – [thetennisplace.net](http://thetennisplace.net)

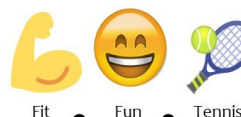
Fit Fun Tennis is a community tennis program hosted by The Tennis Place, Inc. Our qualified instructors focus on the fundamentals of tennis with an emphasis on Fun! All of our classes teach tennis specific movements and proper technique. You'll be challenged to improve at your own pace while getting a great workout and meeting other tennis players in the community.



**8 WEEKS**    **FEE: \$200**    **AGES: 4 - 18**

**LOCATIONS:** Montrose Park Tennis Court, 3529 Clifton Pl., Glendale, CA 91208  
Emerald Isle Park Tennis Court, 2130 Lenore Dr., Glendale, CA 91206

**SESSION DATES:** Mondays, June 20 - August 15, 2022 (No class Monday, July 4)  
Tuesdays, June 21 - August 16, 2022 (No class Tuesday, July 5)  
Wednesdays, June 22 - August 10, 2022  
Thursdays, June 23 - August 11, 2022



### SKILL LEVEL: TINY TOTS (ages 4 – 6)

<u>Number</u>	<u>Day of Week</u>	<u>Location</u>	<u>Time</u>
141106-01	Mondays	Emerald Isle Park	8:30 a.m. – 9:30 a.m.
141106-02	Tuesdays	Montrose Park	8:30 a.m. – 9:30 a.m.
141106-03	Wednesdays	Emerald Isle Park	8:30 a.m. – 9:30 a.m.
141106-04	Thursdays	Montrose Park	8:30 a.m. – 9:30 a.m.

### SKILL LEVEL: BIG HITTERS (ages 7 – 9)

<u>Number</u>	<u>Day of Week</u>	<u>Location</u>	<u>Time</u>
141107-01	Mondays	Emerald Isle Park	9:30 a.m. – 10:30 a.m.
141107-02	Tuesdays	Montrose Park	9:30 a.m. – 10:30 a.m.
141107-03	Wednesdays	Emerald Isle Park	9:30 a.m. – 10:30 a.m.
141107-04	Thursdays	Montrose Park	9:30 a.m. – 10:30 a.m.

### SKILL LEVEL: JR. DEVELOPMENT I BEGINNER (ages 10 – 12)

<u>Number</u>	<u>Day of Week</u>	<u>Location</u>	<u>Time</u>
141108-01	Mondays	Emerald Isle Park	10:30 a.m. – 11:30 a.m.
141108-02	Tuesdays	Montrose Park	10:30 a.m. – 11:30 a.m.

### SKILL LEVEL: JR. DEVELOPMENT I INTERMEDIATE (ages 10 – 12)

<u>Number</u>	<u>Day of Week</u>	<u>Location</u>	<u>Time</u>
141109-01	Wednesdays	Emerald Isle Park	10:30 a.m. – 11:30 a.m.
141109-02	Thursdays	Montrose Park	10:30 a.m. – 11:30 a.m.

### SKILL LEVEL: JR. DEVELOPMENT II BEGINNER (ages 13 - 18)

<u>Number</u>	<u>Day of Week</u>	<u>Location</u>	<u>Time</u>
141110-01	Mondays	Emerald Isle Park	5:00 p.m. – 6:00 p.m.
141110-02	Tuesdays	Montrose Park	5:00 p.m. – 6:00 p.m.

### SKILL LEVEL: JR. DEVELOPMENT II INTERMEDIATE (ages 13 - 18)

<u>Number</u>	<u>Day of Week</u>	<u>Location</u>	<u>Time</u>
141111-01	Wednesday	Emerald Isle Park	5:00 p.m. – 6:00 p.m.
141111-02	Thursday	Montrose Park	5:00 p.m. – 6:00 p.m.

# Youth Sports



**BEGINNERS EDGE SPORTS TRAINING**

## **BEGINNERS EDGE SPORTS TRAINING (BEST) CLASSES**

For program information, call (818) 937-7440.

To register, call (818) 548-2184.

### **BEST 4-Sport Multi-Sport**

(Soccer, Baseball/Softball, Basketball, and Track & Field).

The 4-sport program brings you multiple weeks of 4 fantastic sports. We will teach your player how to kick and control a soccer ball, how to hit, catch, throw and run the bases, basketball handling, dribbling, passing and shooting, and track and field exercises. Our goal and focus is to maintain an energetic & highly active program that will teach, encourage and advance your young players, regardless of their skill level. Please bring an age-appropriate soccer ball for the first week. A hitting tee is needed later in the camp, as well as your own basketball. All other equipment will be provided.

**LOCATION:** Verdugo Park (South End), Next to the Basketball Court,  
1621 Cañada Blvd., Glendale, CA 91208

### **8 WEEKS**

**FEE:** \$135

**Session 1:** 140801 Saturdays June 18 - August 13, 2022 (no class July 2)  
**Session 2:** 140802 Sundays June 19 - August 14, 2022 (no class July 3)

<u>Section</u>	<u>Age</u>	<u>Time</u>
01	4 - 7	9:00 a.m. – 9:45 a.m.
02	2 - 4	9:50 a.m. – 10:35 a.m.
03	7 - 10	10:40 a.m. – 11:25 a.m.



# Adult Classes

## Adult Fitness/Wellness & Dance

### AIKIDO

Aikido is a peaceful, yet powerful Japanese martial art. This class is designed to teach students how to use an opponent's energy to gain control of a situation using beautiful and circular techniques. Great emphasis is placed on motion and the dynamics of movement.

<b>10 Weeks</b>	<b>Fee: \$100</b>	<b>Instructor: Mark Adachi</b>		
<b><u>Number</u></b>	<b><u>Location</u></b>	<b><u>Begins</u></b>	<b><u>Day</u></b>	<b><u>Time</u></b>
160401-01	Pacific CC	6/23	M, Th Sat	7:00 p.m. - 8:30 p.m. 10:00 a.m. - 11:30 a.m.



### YOGA with Kneko Fruge, C-IAYT, E-RYT & Yoga Circle Downtown

Postures (Asanas) stretch, tone and strengthen the entire skeletal system, working not only the body's frame, but the internal organs, glands and nerves as well. These postures are linked via a connective movement (Vinyasa) and powerful breath work. These breathing exercises (pranayama) refresh and cleanse the body and help to control the mind. The union (yoga) of these two forces (Asana and Pranayama), release physical and mental tension, liberating vast resources of energy with increased mental power, clarity and concentration. This practice, over time, will bring your being into peak physical and mental condition.

<b>10 Weeks</b>	<b>Fee: \$150</b>	<b>Instructor: Kneko Fruge</b>		
<b><u>Number</u></b>	<b><u>Location</u></b>	<b><u>Begins</u></b>	<b><u>Day</u></b>	<b><u>Time</u></b>
130303-01	Chevy Chase Library	6/11	Sat	9:00 a.m. - 10:00 a.m.

# Adult Sports

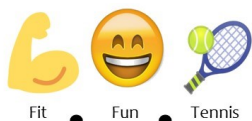
## Adult Sports

For program information, call (818) 937-7440.

To register, call (818) 548-2184.

### ADULT TENNIS CLASSES ~ NEW KICK-OFF SEASON!

#### Fit Fun Tennis – [thetennisplace.net](http://thetennisplace.net)



Fit Fun Tennis is a community tennis program hosted by The Tennis Place, Inc. Our qualified instructors focus on the fundamentals of tennis with an emphasis on Fun! All of our classes teach tennis specific movements and proper technique.

You'll be challenged to improve at your own pace while getting a great workout and meeting other tennis players in the community.



**6 WEEKS**    **FEE: \$150**    **AGES: 18+**

**LOCATIONS:** Montrose Park Tennis Court, 3529 Clifton Pl., Glendale, CA 91208  
Emerald Isle Park Tennis Court, 2130 Lenore Dr., Glendale, CA 91206

**SESSION DATES:** Mondays, May 2 - June 13, 2022 (No class Monday, May 30)  
Tuesdays, May 3 - June 7, 2022  
Wednesdays, May 4 - June 8, 2022  
Thursdays, May 5 - June 9, 2022  
Saturdays, May 7 - June 11, 2022

#### SKILL LEVEL: ADULT BEGINNER

<u>Number</u>	<u>Day of Week</u>	<u>Location</u>	<u>Time</u>
441003-01	Mondays	Emerald Isle Park	9:00 a.m. - 10:00 a.m.
441003-02	Tuesdays	Emerald Isle Park	9:00 a.m. - 10:00 a.m.
441003-03	Tuesdays	Montrose Park	6:30 p.m. - 7:30 p.m.
441003-04	Saturdays	Montrose Park	8:30 a.m. - 9:30 a.m.

#### SKILL LEVEL: ADULT INTERMEDIATE

<u>Number</u>	<u>Day of Week</u>	<u>Location</u>	<u>Time</u>
441004-01	Mondays	Emerald Isle Park	10:00 a.m. - 11:00 a.m.
441004-02	Tuesdays	Emerald Isle Park	10:00 a.m. - 11:00 a.m.
441004-03	Thursdays	Montrose Park	6:30 p.m. - 7:30 p.m.
441004-04	Saturdays	Montrose Park	10:30 a.m. - 11:30 a.m.

#### SKILL LEVEL: ADULT CARDIO TENNIS DRILLS – INTERMEDIATE - ADVANCED

<u>Number</u>	<u>Day of Week</u>	<u>Location</u>	<u>Time</u>
441005-01	Saturdays	Montrose Park	9:30 a.m. – 10:30 a.m.



# Adult Sports

## ADULT TENNIS CLASSES - SUMMER CLASSES

### Fit Fun Tennis – *thetennisplace.net*



Fit Fun Tennis is a community tennis program hosted by The Tennis Place, Inc. Our qualified instructors focus on the fundamentals of tennis with an emphasis on Fun! All of our classes teach tennis specific movements and proper technique. You'll be challenged to improve at your own pace while getting a great workout and meeting other tennis players in the community.

**8 WEEKS**    **FEE: \$200**    **AGES: 18+**

**LOCATIONS:** Montrose Park Tennis Court, 3529 Clifton Pl., Glendale, CA 91208  
Emerald Isle Park Tennis Court, 2130 Lenore Dr., Glendale, CA 91206

**SESSION DATES:** Mondays, June 20 - August 15, 2022 (No class Monday, July 4)  
Tuesdays, June 21 - August 16, 2022 (No class Tuesday, July 5)  
Wednesdays, June 22 - August 10, 2022  
Thursdays, June 23 - August 11, 2022  
Saturdays June 25 - August 20, 2022 (No class Saturday, July 2)

#### SKILL LEVEL: ADULT BEGINNER

<u>Number</u>	<u>Day of Week</u>	<u>Location</u>	<u>Time</u>
141003-01	Mondays	Emerald Isle Park	6:00 p.m. - 7:00 p.m.
141003-02	Tuesdays	Montrose Park	6:00 p.m. - 7:00 p.m.
141003-03	Saturdays	Montrose Park	8:30 a.m. - 9:30 a.m.

#### SKILL LEVEL: ADULT INTERMEDIATE

<u>Number</u>	<u>Day of Week</u>	<u>Location</u>	<u>Time</u>
141004-01	Wednesdays	Emerald Isle Park	6:00 p.m. - 7:00 p.m.
141004-02	Thursdays	Montrose Park	6:00 p.m. - 7:00 p.m.
141004-03	Saturdays	Montrose Park	10:30 a.m. - 11:30 a.m.

#### SKILL LEVEL: ADULT CARDIO DRILLS

<u>Number</u>	<u>Day of Week</u>	<u>Location</u>	<u>Time</u>
141005-01	Saturdays	Montrose Park	9:30 a.m. - 10:30 a.m.



# Adult Sports

## Activity Card Fee Schedule:

Senior Activity Cards (60 years of age and older)	\$10/year
Adult Activity Cards (18 - 59 years old)	\$25/year

Cards may be purchased at one of the following locations:

- **Adult Recreation Center**, 201 E. Colorado St., Glendale, CA 91204
- **Glendale Sports Complex**, 2200 Fern Lane, Glendale, CA 91208
- **Maple Park Community Center**, 820 E. Maple St., Glendale, CA 91205
- **Pacific Community Center**, 501 S. Pacific Ave., Glendale, CA 91204
- **Sparr Heights Community Center**, 1613 Glencoe Way, Glendale, CA 91208

## ADULT OPEN PLAY BADMINTON

Join a sport that gives you a great aerobic workout! All skill levels are invited to participate!



<b>Location:</b>	<b>Pacific Community Center Gym</b> 501 S. Pacific Ave., Glendale, CA 91204
<b>Fee:</b>	Free for Activity Card Holders (see fee schedule above) \$2 for Non-Activity Card Holders
<b>Days/Times:</b>	Fridays, 6:00 p.m. - 10:00 p.m. Call the facility to check for closures: (818) 548-4098.

## ADULT DROP-IN BASKETBALL

Open play basketball is available to adults of all skill levels in our gyms at Maple Park Community Center and Pacific Community Center. All skill levels are welcome to drop-in for a good workout by playing pickup games. **Ask for the drop-in calendar from the front desk to know when drop-in goes dark due to facility reservations and special events. Drop-in calendar is subject to change without notice. Please contact the Community Center for an up-to-date schedule.**

<b>Fee:</b>	Free for Activity Card Holders (see fee schedule above) \$2 for Non-Activity Card Holders	
<b>Location:</b>	<b>Maple Park Community Center</b> 820 E. Maple St. Glendale, CA 91205	
<b>Days/Times:</b>	Monday through Friday	4:00 p.m. - 5:00 p.m.
	Saturday	9:00 a.m. - 5:00 p.m.
<b>Location:</b>	<b>Pacific Community Center</b> 501 S. Pacific Ave. Glendale, CA 91204	
<b>Days/Times:</b>	Monday and Thursday	5:00 p.m. - 8:00 p.m.
	Saturday	12:00 p.m. - 4:00 p.m.





# Adult Sports

## ADULT OPEN PLAY VOLLEYBALL



**Location:** **Maple Park Community Center\***  
820 E. Maple St., Glendale, CA 91205

**Fee:** Free for Activity Card Holders (see fee schedule on page 50)  
\$2 for Non-Activity Card Holders

**Days/Times:** Tuesdays, 6:00 p.m. - 9:00 p.m.  
(Ask for the drop-in calendar at the front desk to know when drop-in goes dark due to private reservations or special event.)

\*Release of liability form is due each calendar year. Maximum 42 person capacity per night. Teams will be established in groups of 6 based on the sign-in sheet.

## MASTERS OPEN PLAY SOCCER (Ages 40+)

Get a healthy workout and meet new friends as you join other adult enthusiasts for casual pick-up games. This is a non-competitive, friendly play program. Pick-up games are available on Wednesday and Friday mornings.

**Fee:** Activity Card holders only. \$2 per player per day  
(see fee schedule on page 50)

**Days/Time:** Wednesdays and Fridays, 7:30 a.m. - 9:30 a.m.

**Location:** Glendale Sports Complex  
2200 Fern Lane, Glendale, CA 91208

## MASTERS OPEN PLAY SOCCER (Ages 60+)

The City offers causal pick-up soccer for adults over age 60 in both a walking and running format. Walking soccer is designed to get seniors on the field to stay physically active, but without the intensity of a regular game. The programs will be offered at different times to allow for safe and enjoyable games for both intensities.

**Fee:** Activity Card holders only. \$2 per player per day  
(see fee schedule on page 50)

<b>Day/Time:</b>	Tuesdays and Thursdays,	Walking Soccer	10:00 a.m. - 11:00 a.m.
		Masters Soccer	11:00 a.m. - 1:00 p.m.

**Location:** Glendale Sports Complex  
2200 Fern Lane, Glendale, CA 91208



Events and programs may be cancelled due to L.A. County Department of Public Health protocols. For updates, visit [www.glendaleca.gov/LG](http://www.glendaleca.gov/LG).

# GCC Senior Classes



## SENIOR CLASSES

### Sponsored by Glendale Community College

The City of Glendale, in partnership with Glendale Community College, is sponsoring several classes for seniors, ages 60+, FREE of charge.  
For information or class registration, please call (818) 243-5196.

**Summer Session Dates:  
June 20, 2022 - August 26, 2022**

Please visit [www.garfield.glendale.edu](http://www.garfield.glendale.edu) for a listing of all credit/no credit classes available through Glendale Community College Garfield Campus.



# Senior Classes & Activities

**ALL CLASSES ARE ONGOING, YOU MAY REGISTER AT ANY TIME.**

The classes listed below will be offered in-person AND online. You are welcome to join us in either format.

If you wish to participate online via Zoom, please email [cspcares@glendaleca.gov](mailto:cspcares@glendaleca.gov). We will send you a meeting invitation, meeting ID and password.

In-person classes must follow all LA County Health Department protocols.

## Locations:

Mondays, Wednesdays, and Fridays – Pacific Community Center, 501 S. Pacific Ave. Glendale, CA 91204

Tuesdays and Thursdays – Sparr Heights Community Center, 1613 Glencoe Way, Glendale, CA 91208

**Fee Schedule:**     **\$1 per class, payable at the beginning of each class. Activity card holders only. (Card must be presented upon payment.)**

## **Activity Card Fee:**

**Senior Activity Cards (60 years of age and older)**

**\$10/year**

**Adult Activity Cards (18 - 59 years old)**

**\$25/year**

**Single-Day Pass**

**\$2/day**

***For ALL Classes Listed Below:***

***Zoom Meeting ID: 894 7893 4835 | Passcode: PMLB2022***

Day	Class	Time	Location
Mondays	Aerobics	9:15 a.m. - 10:15 a.m.	Pacific CC
	Slow Stretch	10:15 a.m. - 11:15 a.m.	Pacific CC
	Absolute Beginner Line Dancing	11:15 a.m. - 12:15 p.m.	Pacific CC
	Beginner/Improver Line Dancing*	12:30 p.m. - 2:30 p.m.	Pacific CC
Tuesdays	Zumba	9:00 a.m. - 10:00 a.m.	Sparr Heights CC
	Muscle Toning	10:00 a.m. - 11:00 a.m.	Sparr Heights CC
Wednesdays	Zumba	9:15 a.m. - 10:15 a.m.	Pacific CC
Thursdays	Aerobics	9:00 a.m. - 10:00 a.m.	Sparr Heights CC
	Slow Stretch	10:00 a.m. - 11:00 a.m.	Sparr Heights CC
Fridays	Zumba	9:15 a.m. - 10:15 a.m.	Pacific CC
	Muscle Toning	10:15 a.m. - 11:15 a.m.	Pacific CC

\* Activity Card Holders \$2 per class, payable at the beginning of each class.

Non-Activity Card Holders \$4 per class, payable at the beginning of each class.

Events and programs may be cancelled due to L.A. County Department of Public Health protocols. For updates, visit [www.glendaleca.gov/LG](http://www.glendaleca.gov/LG).



# Senior Classes & Activities

## Adult Recreation Center

### ADULT RECREATION CENTER

201 E. Colorado St., Glendale, CA 91205  
For more information, call (818) 548-3775.

**AVAILABLE TO ACTIVITY CARD HOLDERS ONLY.**

### EXERCISE ROOM

The Adult Recreation Center offers a wide selection of fitness equipment including treadmills, cross-trainers, and stationary bikes along with numerous multifunction machines. Proper workout clothes and a towel are required.

**An additional ARC Gym Membership is required.**

#### Fee Schedule:

<b>Senior Activity Cards (60 years of age and older)</b>	<b>\$10/year</b>
<b>Adult Activity Cards (18 - 59 years old)</b>	<b>\$25/year</b>
<b>Senior ARC Gym Membership</b>	<b>\$50/year plus an Activity Card</b>
<b>Adult ARC Gym Membership</b>	<b>\$80/year plus an Activity Card</b>

#### Exercise Room Hours

Monday - Thursday	8:00 a.m. - 7:30 p.m.
Fridays & Saturdays	8:00 a.m. - 4:30 p.m.



# Senior Classes & Activities

## Adult Recreation Center

### ADULT RECREATION CENTER

ALL OF THE FOLLOWING ACTIVITIES ARE AVAILABLE TO ACTIVITY CARD HOLDERS ONLY.  
For more information, please call (818) 548-3775.

#### ARC BRIDGE CLUB



Millions of people play bridge worldwide. Bridge is a trick-taking game using a standard deck played by four players.

**Days/Time:** Tuesdays & Thursdays 11:30 a.m. - 4:30 p.m.

**Location:** Activity Room and/or Multi-Purpose Room B

#### DROP-IN BILLIARDS, BACKGAMMON, CHESS, AND DOMINOS



You can drop in Monday through Saturday to play some billiards, backgammon, chess or dominos. **Hours may change based on room availability.**

**Days/Time:** Mondays – Thursdays 8:00 a.m. - 7:30 p.m.

Fridays and Saturdays 8:00 a.m. - 4:30 p.m.

**Location:** Multi-Purpose Room A

#### BINGO



Make new friends while playing this timeless classic.

**Activity Card Holders: \$1 for 2 cards; Non Activity Card Holders: \$2 for 2 cards.**

**Days/Time:** Fridays 10:00 a.m. - 11:00 a.m.

**Location:** Multi-Purpose Room A

#### KNIT & CHAT



Bring your yarn and needles to knit and chat with your friends about various topics. Show off your skills, and teach each other new methods!

**Days/Time:** Tuesdays & Fridays 9:00 a.m. - 10:00 a.m.

**Location:** Activity Room

#### SENIOR CHAT GROUP

Make new friends while discussing day to day challenges.

**Days/Time:** First Tuesday of Every Month

10:00 a.m. - 11:00 a.m.

**Location:** Activity Room

# Senior Classes & Activities

## Pacific Community Center

### PACIFIC COMMUNITY CENTER

501 S. Pacific Ave, Glendale 91204, Glendale, CA 91204

For more information, call (818) 548-4098.

#### Activity Card Fee:

Senior Activity Cards (60 years of age and older)

\$10/year

Adult Activity Cards (18 - 59 years old)

\$25/year

Single Day Pass

\$ 2 /day

### DROP-IN BILLIARDS

You can drop in Monday through Saturday to play some billiards. **Hours may change based on room availability.**

**Days/Time:** Mondays – Thursdays, 9:00 a.m. - 8:30 p.m.  
Fridays & Saturdays, 9:00 a.m. - 4:30 p.m.

**Location:** Recreation Room

### CONTEMPORARY WORLD ISSUES

Join your peers every Tuesday to discuss various current affairs at the local, state, and national level as well as news and events that take place abroad. The weekly meet-up is an opportunity to ask questions, express your thoughts and opinions about topics, and see what others think.

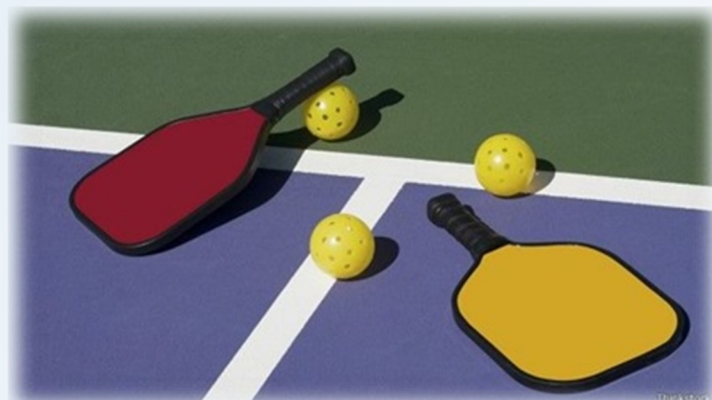
**Days/Time:** Tuesdays, 10:00 a.m. - 12:00 p.m.

**Location:** Red Bud Room

### PICKLEBALL

Come out and try this fun sport, make some friends and see what everyone is talking about.

- ◇ All Levels and Ages Welcome
- ◇ Coaching Available for Beginners
- ◇ Paddles Available



#### 3 Outdoor Courts

Monday - Friday 9:00 a.m. - 12:00 p.m.

#### Pickleball for Parkinson's

Fridays 9:00 a.m. - 12:00 p.m.

#### 4 Indoor Courts

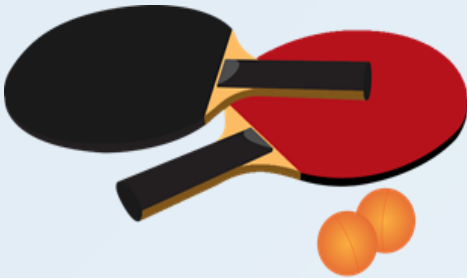
Tuesdays 5:30 p.m. - 8:00 p.m.



# Senior Classes & Activities

## Pacific Community Center

### OPEN PLAY TABLE TENNIS



No matter what your skill level or how long it has been since you held a paddle, the time has come to play some ping pong. Make new friends and get a work out while having fun.

**Days/Time:**

Tuesdays and Wednesdays, 2:30 p.m. - 5:30 p.m.

Saturdays, 12:30 p.m. - 4:00 p.m.

**Fee:** See Activity Card Fee schedule on previous page.

### SENIOR MIXER

***Due to COVID-19, the senior mixer has temporarily relocated to Pacific Community Center through June 10, 2022. The Senior Mixer will return to the Adult Recreation Center's Dining Hall beginning Thursday, June 16, 2022.***

If you like to salsa, cha-cha, rumba, waltz or boogie, this is the place to be. The senior mixer is a great opportunity to socialize with fellow seniors in the greater community of Glendale, make new acquaintances and enjoy a good time.

**Location:** Pacific Community Center, Gym A

**Days/Time:** Fridays, 2:30 p.m. - 5:00 p.m.

**Dates:** May 13 and 27 | June 10

**Beginning June 16, 2022**

**Location:** Adult Recreation Center, Dining Hall

**Days/Time:** Thursdays, 3:00 p.m. - 6:00 p.m.

**Fee:** Participants must have a valid/current activity card on file. A single day pass may be purchased for \$2.00 per person.



\* A suggested donation of \$3.00 is collected at the entrance to the mixer. This is a gratuity that is given to the DJ at the end of each event.

**Participants must follow all L.A. County Department of Public Health protocols.**

# Senior Classes & Activities

## Sparr Heights Community Center

### SPARR HEIGHTS COMMUNITY CENTER

1613 Glencoe Way, Glendale, CA 91208  
For more information, call (818) 548-2187.

**ALL OF THE FOLLOWING ACTIVITIES ARE AVAILABLE TO ACTIVITY CARD HOLDERS ONLY.**

#### WOODCARVING CLASS

Bring your favorite tools, create a work of art, and enjoy the companionship of like-minded folks.

**Day/Time:** Thursdays 10:00 a.m. - 11:00 a.m.

#### BRIDGE

Senior bridge players of all skill levels and experience can come to the center and participate in competitive bridge games.

**Day/Time:** Mondays 9:00 a.m. - 11:30 a.m.

#### BINGO

If you were born to yell, "BINGO!", come out and enjoy an exciting game of senior bingo for prizes and socialization.

**Activity Card Holders: \$1 for 2 cards; Non Activity Card Holders: \$2 for 2 cards.**

**Day/Time:** Wednesdays 12:30 p.m. - 1:30 p.m.





## Senior Services

# Let's Celebrate the Return of IN-PERSON Dining



Seniors 60 years or older residing in Los Angeles County are eligible for the Elderly Nutrition Program.

## Elderly Nutrition Program In-Person Dining Resumes starting on Monday, May 16, 2022.

**In-person dining will be available at the following meal sites:**  
**Space is limited, please contact us at 818-548-3778 to make your reservation.**

**Adult Recreation Center**  
501 S Pacific Ave.  
Glendale, CA 91204

**Sparr Heights Community Center**  
1613 Glencoe Way.  
Glendale, CA 91208

**Pacific Community Center**  
501 S Pacific Ave.  
Glendale, CA 91204



Community Services  
& Parks



\*Starting July 1, 2022, all new and returning clients must fill out a 2022-2023 Universal Intake Form before receiving meals.

Events and programs may be cancelled due to L.A. County Department of Public Health protocols. For updates, visit [www.glendaleca.gov/LG](http://www.glendaleca.gov/LG).



# Senior Services



## CASE MANAGEMENT

The Case Management program for seniors is designed to meet the special needs of frail individuals who maybe experiencing difficulty in maintaining independent living arrangements.

**For Information & Referral Services, please call:** (818) 548-3772  
**Spanish Language Case Manager:** (818) 548-2801

## Transportation Services and Bus Pass Sales:

Transportation services include Dial-A-Ride, by reservation, and MTA bus passes, sold at the Adult Recreation Center, Sparr Heights Community Center and Pacific Community Center all month long.

**The Metro bus pass for seniors is not honored by the Beeline.**

For more information about the Access Paratransit Program for disabled seniors, call (818) 548-3775 or (818) 548-2187.

## Health Insurance Counseling and Advocacy Program (HICAP):

The state-registered Health Insurance Counseling and Advocacy Program (HICAP) Volunteer Counselors provide unbiased information, counseling and assistance on Medicare and related health care coverage, including:

- ◆ Original Medicare (Parts A & B)
- ◆ Medicare Prevention Services
- ◆ Medicare Part D (Prescription Drug Benefit)
- ◆ "Extra Help" with Medicare Part D
- ◆ Medicare Advantage: HMO'S & PPO
- ◆ Medicare Supplement (Medigap) Insurance
- ◆ Medi-Cal & Medicare Savings Programs
- ◆ Long-Term Care

Contact the Adult Recreation Center at (818) 548-3775 for more information.

## Legal Aid - Provided by the Armenian Bar Association:

Assistance with legal questions and legal documents.

<b>Office Hours:</b>	Tuesdays & Thursdays	1:00 p.m. - 5:00 p.m.
	Wednesdays	9:00 a.m. - 2:00 p.m.
	Saturdays	10:00 a.m. - 12:00 p.m.

Walk-Ins welcome, or an appointment can be made at (818) 937-3151 or at [ProBono@ArmenianBar.org](mailto:ProBono@ArmenianBar.org).

# Filming in Parks & Community Buildings

## Film Permits Process

Looking for a great place to host your next filming project? The City of Glendale Community Services & Parks Department welcomes filming in parks and community buildings! Our parks and locations can accommodate: Feature Films, Commercials, Music Videos, Public Service Announcements, Still Photo Shoots, Reality TV Series, Documentaries, Director's Reels, Student Films.

### Film Permits Include:

- Reserved site
- Professional Site Host onsite to ensure film crew has access to reserved site
- Well-maintained locations that are clean and ready for set dressing if applicable

### Previous Film Projects Include:

- Criminal Minds TV Series
- Adidas Commercial
- The Bachelorette TV Series
- Pedigree Commercial
- Battlefield America
- MTV's Parental Control
- Various other projects

### Requesting a Film Permit

**Contact Norma Mower: (818) 548-3813**

**Email: [nmower@glendaleca.gov](mailto:nmower@glendaleca.gov)**

1. Verify park/facility availability.
2. Obtain a Film Permit Application. Film permit application can be downloaded from [www.glendaleca.gov/businesses/filming-in-glendale](http://www.glendaleca.gov/businesses/filming-in-glendale)
3. Complete a Film Permit Application with Community Services & Parks.
4. Complete a Film Permit Application with Management Services.
5. A site meeting may be scheduled in conjunction with the Facility Permit Application.
6. Make payment in full to Community Services & Parks.
7. Obtain an approved Facility Permit.



Events and programs may be cancelled due to L.A. County Department of Public Health protocols. For updates, visit [www.glendaleca.gov/LG](http://www.glendaleca.gov/LG).



# Tours of Historic Facilities

FOR RESERVATIONS, PLEASE CALL  
COMMUNITY SERVICES & PARKS AT (818) 548-2184  
FOR TOUR INFORMATION, PLEASE CALL THE DOCENTS  
AT THE VARIOUS SITES

## "Shoseian" Whispering Pine Teahouse & Friendship Garden



Inside Brand Park  
1601 West Mountain Street, Glendale, CA 91201  
(310) 849-5432

### HOURS OF OPERATION

**Friendship Garden:** Mon - Thur, 10:00 a.m. - 3:00 p.m.  
**Teahouse Events/Programs:** Third Sunday of the month.  
Go to [www.glendaleteahouse.org](http://www.glendaleteahouse.org) for event details.  
**Docent:** Friends of Shoseian

### FACILITY DESCRIPTION

- The traditional teahouse was built in 1974 through the combined efforts of the Sister Cities of Glendale and Higashi-Osaka, Japan. It is one of the few traditional Japanese Teahouses open to the public in the United States.
- The Teahouse, which was designed by architect Hayahiko Takase, is a unique blending of western and eastern design and an apt expression of the spirit of cross-cultural community.
- Nestled at the foot of the Verdugo Mountains beside a koi pond in a charming Japanese-style garden setting, the Teahouse is in a unique position to outreach to the community of Glendale and greater Los Angeles.

### HISTORY

- The Teahouse represents the spirit of goodwill, lasting peace and friendship between the people of Japan and the United States.
- Given the name "Shoseian" or "Whispering Pine Teahouse" by Genshitsu Sen, the Fifteenth Grand Tea Master of the Urasenke School of Tea in Japan, the Teahouse is designated an official Tearoom. Dr. Yamazaki of Higashi-Osaka provided initial support for the Teahouse and Gardens.
- Through recent cooperative efforts by the City of Glendale and Friends of Shoseian, the Teahouse was refurbished and designated as Glendale Register of Historic Resources #46.

## Doctors House Museum & Gazebo

Inside Brand Park  
1601 West Mountain Street, Glendale, CA 91201  
(818) 242-7447

### HOURS OF OPERATION

**Guided Tours:** Sundays 2:00 p.m. - 4:00 p.m.  
Beginning May 15, 2022 (No tours in July 2022, on holidays, and during inclement weather.)

**Docent:** The Glendale Historical Society  
**Suggested Donation:** \$5

### FACILITY DESCRIPTION

- The Doctors House Museum is an authentically restored Queen Anne-Eastlake style home built around 1888.
- The Doctors House lawn area and gazebo are available for reservation for weddings and other special events.
- Smoking, barbecues, and amplified sound are NOT permitted because of the historic nature of the facility.

### HISTORY

- The two-story house originally stood at 921 East Wilson Avenue in Central Glendale, but was moved to its present location in 1980.
- Four early doctors owned it in succession, giving the house its name. It was later occupied by silent screen icon Nell Shipman and her family in the early 1900s.
- Threatened with demolition in 1979, community activists organized to save it and formally incorporated The Glendale Historical Society on October 24, 1979.
- The Glendale Historical Society dedicated the Doctors House to the City of Glendale on September 12, 1982, after spending thousands of volunteer hours on restoration.
- The Doctors House is registered as Glendale Register of Historic Resources #6.





# Tours of Historic Facilities

## Casa Adobe de San Rafael & Park



1330 Dorothy Drive, Glendale, CA 91202  
glendalebeautiful@gmail.com  
(818) 396-6840

### HOURS OF OPERATION

Daily 8:00 a.m. – Dusk

#### Guided Tours:

Sept- June: First Sunday of the Month, 1:00 p.m. - 3:00 p.m.

July & August: Every Sunday, 1:00 p.m. - 3:00 p.m.

**Suggested Donation:** \$2

**Docent:** Glendale Beautiful

### FACILITY DESCRIPTION

- The park is 1.6 acres in size.
- Amenities include a picnic pavilion which is available for small company or family picnics or gatherings, a turf area that is available for larger festival-type events, gas grill, sink, electrical outlets, and public restroom facilities.
- Smoking, barbecues, and amplified sound are NOT permitted because of the historic nature of the facility

### HISTORY

- Casa Adobe de San Rafael is registered as California Landmark #235 and Glendale Register of Historic Resources #3.
- The Casa was built around 1870 by Tomas Sanchez, former sheriff of Los Angeles County, using adobe blocks to form the walls, which were then covered with stucco.
- In 1875, the property was sold, left abandoned, and fell into a ruinous state.
- In 1930 the Casa was purchased by the California Medicinal Wine Company who planned to tear down the structure and remove the large eucalyptus trees on the property. Local neighbors and community members stopped the demolition and began a campaign to preserve the house as a historic landmark.
- The City of Glendale purchased the adobe in 1930 and by 1932 La Casa de Adobe de San Rafael was completely refurbished.
- Today, the adobe includes a Monterey-style corridor (covered porch), beautiful sunken garden, brick patio, sandy brown tile roof, and long narrow front windows adorned with teal shutters. Interior furnishings are from the nineteenth century.

## Catalina Verdugo Adobe

2211 Bonita Drive, Glendale, CA 91208  
(747) 228-2688  
[www.glendalebeautiful.org](http://www.glendalebeautiful.org)

### HOURS OF OPERATION

Daily 8:00 a.m. - Dusk

**Guided Tours:** Scheduled Tours Only - Please call to schedule

**Docent:** Days of the Verdugos Heritage Association

### FACILITY DESCRIPTION

- The park is 1.3 acres in size and is nestled at the base of the Verdugo Mountains in a residential neighborhood.
- Amenities include a walking trail, a garden, and a shaded picnic area with wooden tables, benches, and electric outlets.
- Smoking, barbecues, and amplified sound are NOT permitted because of the historic nature of the facility.

### HISTORY

- The Catalina Verdugo Adobe is registered as California Historical Landmark #637 and Glendale Register of Historic Resources #1.
- The Adobe is the oldest structure in the City of Glendale. As with many early structures, the construction date of the Verdugo Adobe is uncertain. It is said the Adobe was built in 1828, but some research suggests that it dates to 1860. It was the home of Catalina Verdugo who, with her brother Julio, owned much of today's Northeast Glendale. Their father, Don Jose Maria Verdugo, was the original recipient of Rancho San Rafael, the Spanish land grant that encompassed large portions of Glendale, Burbank, and Eagle Rock.
- The grounds contain the remnants of the "Oak of Peace," under which a meeting was held in 1847 that led, a few days later, to the signing of the peace treaty, Treaty of Cahuenga, that ended the Mexican-American War.
- The Adobe originally consisted of the main room and the south wing. The north wing was added in the early 1900s, after it was sold to land developer F.P. Newport.
- In 1946, the property was sold to Dr. Ernest Bashor, and his family remained there until it was sold to the City of Glendale in 1989. It is fortunate that the historic value of the original house remained preserved.



# Historic Buildings in Glendale Parks

## STONE BARN NATURE CENTER

### Deukmejian Wilderness Park

3429 Markridge Road, Glendale, CA 91214

#### Hours of Operation

Fridays: 3:00 p.m. – 6:00 p.m.

Saturdays & Sundays: 9:00 a.m.– 6:00 p.m.

The Stone Barn Nature Center is now open! Please stop by during our open hours of operation to tour the center and learn about the history of the Deukmejian Wilderness Park and the Barn. Entry is free!

The Stone Barn was originally built between 1905-1915, by the Le Mesnager family. Throughout the years, it has served as a winery, stables, residence, and now a nature center. It burned down in the 1933 wildfire, but was rebuilt to the structure you see today.

Visit the nature center to learn about the history of the land by the Dunsmoor family, the winery that Georges Le Mesnager and his family operated, and the acquisition of the park by the City of Glendale.

From wildfires to wildlife, our backyard is full of exciting and amazing things. Join us to learn about tectonic movement that has created our mountains, the plants and bugs native to the hillsides, and the amazing creatures that roam in our own backyard.

For more information, please visit [www.glendaleca.gov/stonebarn](http://www.glendaleca.gov/stonebarn) or call (818) 937-7428.



## ROCKHAVEN SANITARIUM

2713 Honolulu Avenue, Glendale, CA 91020

Rockhaven is a rare surviving example of the sanitariums that once flourished in the Crescenta Valley. First opened in 1923 by Agnes Richard as a “home for the feeble-minded women,” and later known as the “Screen Actor’s Sanitarium,” Rockhaven housed several Hollywood celebrities, such as Billie Burke, Flo Zigfield, Clark Gable’s first wife, as well as Marilyn Monroe’s mother. Over time, Agnes Richards purchased several neighboring Craftsman-style houses, and in the late 1920s and 1930s built several Spanish Colonial Revival style buildings which were designed specifically for the purpose of medical care and patient accommodations, expanding the facility to an approximately 3.5 acre site.

The character of this property was as much defined by its landscape as it was by its buildings. The buildings were, and still are, connected by meandering landscaped pathways, intimate gardens, patios, courtyards and expansive perimeter gardens to create a home-like setting for the individual care of the patients. In 1966, Rockhaven was awarded for its landscaping by Los Angeles Beautiful, Incorporated.

The City purchased the property in 2008 from Ararat Home, who had purchased the property in 2001 to operate a convalescent facility. The facility remains closed to the public at this time due to safety concerns.

You can read more about the facility by visiting the City’s website, [www.glendaleca.gov](http://www.glendaleca.gov), and searching Rockhaven in the search bar.





# Facility Reservations

## Adult Recreation Center

201 E. Colorado St.  
Glendale, CA 91205  
(818) 548-3775

### Steps To Rent:

1. Choose the event type, date & time.
2. Complete the Community Center Reservation Request Form and submit to the Center.
3. After completing the form, staff will contact you regarding availability and fees.
4. Upon agreement, make arrangements with the Facility Supervisor to finalize all permit requirements.

### Indoor Spaces:

- Dining Hall, maximum capacity: 240
- Multi-Purpose Room, maximum capacity: 80
- Activity Room, maximum capacity: 15
- Full service kitchen available. *Must be reserved in conjunction with a room reservation. You must bring your own kitchen equipment including pots, pans, utensils, storage ware, etc.*

### Outdoor Spaces:

- Upper Courtyard, maximum capacity: 24
- Lower Courtyard, maximum capacity: 56





# Facility Reservations

## Maple Park Community Center

820 E. Maple St.  
Glendale, CA 91205  
(818) 548-3783 or (818) 548-3694

### Steps To Rent:

1. Choose the event type, date & time.
2. Complete the Community Center Reservation Request Form and submit to the Center.
3. After completing the form, staff will contact you regarding availability and fees.
4. Upon agreement, make arrangements with the Facility Supervisor to finalize all permit requirements.

### Indoor Spaces:

- Meeting Room 101, maximum capacity: 60
- Meeting Room 102, maximum capacity: 75
- Gymnasium, maximum capacity: 200
- Two Kitchenettes equipped with warming oven, microwave, and sink. *Must be reserved in conjunction with a room reservation. You must bring your own kitchen equipment including pots, pans, utensils, storage ware, etc.*

### Outdoor Spaces:

- Terrace, maximum capacity: 20



## Pacific Park and Community Center

501 S. Pacific Ave.  
Glendale, CA 91204  
(818) 548-4098

### Steps To Rent:

1. Choose the event type, date & time.
2. Complete the Community Center Reservation Request Form and submit to the Center.
3. After completing the form, staff will contact you regarding availability and fees.
4. Upon agreement, make arrangements with the Facility Supervisor to finalize all permit requirements.



### Indoor Spaces:

- Gym A, maximum capacity: 300
- Gym B with Stage, maximum capacity: 300
- Red Bud Room, maximum capacity: 40
- Sycamore Room, maximum capacity: 60
- Oak Room, maximum capacity: 32
- Conference Room, maximum capacity: 8
- A kitchenette equipped with an oven, 6 burner stove top, warming oven, microwave, and three basin sink. *Must be reserved in conjunction with a room reservation. You must bring your own kitchen equipment including pots, pans, utensils, storage ware, etc.*

### Outdoor Spaces:

- Little League Baseball Field
- Multi-Use Artificial Turf Field with soccer lines
- Terrace, maximum capacity: 24
- Multi-Use Court with basketball and Pickleball lines
- Two picnic shelters, maximum capacity: 50 each (equipped with a barbecue and sink)





## Sparr Heights Community Center

1613 Glencoe Way  
Glendale, CA 91208  
(818) 548-2187

### Steps To Rent:

1. Choose the event type, date & time.
2. Complete the Community Center Reservation Request Form and submit to the Center.
3. After completing the form, staff will contact you regarding availability and fees.
4. Upon agreement, make arrangements with the Facility Supervisor to finalize all permit requirements.

### Indoor Spaces:

- Verdugo Room maximum capacity: 100
- Garden Room maximum capacity: 40
- A Kitchenette equipped with warming oven, microwave, and two basin sink. *Must be reserved in conjunction with a room reservation. You must bring your own kitchen equipment including pots, pans, utensils, storage ware, etc.*

### Outdoor Spaces:

- South Patio maximum capacity: 80
- North Patio maximum capacity: 8





# Facility Reservations

## PICNIC FACILITIES

(818) 548-2184 | (818) 548-2752

[www.glendaleca.gov/reservations](http://www.glendaleca.gov/reservations)

### Verdugo Park

1621 Canada Blvd., Glendale, CA 91208

- Sections: 5
- Maximum Capacity: 100 per section
- Amenities Include: BBQ grill, electrical outlets available in sections 2, 3, 4
- Jumper permitted

### Catalina Verdugo Adobe

2211 Bonita Ave., Glendale, CA 91208

- Pavilions: 1
- Maximum Capacity: 50
- Amenities Include: electrical outlets
- No onsite cooking

### Palmer Park

610 E. Palmer Ave., Glendale, CA 91205

- Pavilions: 2
- Maximum Capacity: 50 per pavilion
- Amenities Include: electrical outlets, BBQ grill, sink
- Jumper permitted

### Cerritos Park

3690 San Fernando Rd., Glendale, CA 91204

- Pavilions: 1
- Maximum Capacity: 30
- Propane gas BBQ only
- Jumper permitted

### Deukmejian Wilderness Park

3429 Markridge Rd., Glendale, CA 91214

- Pavilions: 2
- Maximum Capacity: 12 ( two tables)
- Amenities Include: electrical outlets
- No onsite cooking

### Lower Scholl Canyon Park

2847 E. Glenoaks Blvd., Glendale, CA 91206

- Pavilions: 3
- Maximum Capacity: 80 per pavilion
- Amenities Include: BBQ grill, sink, electrical outlets
- Jumper permitted

### Casa Adobe de San Rafael

1330 Dorothy Dr., Glendale, CA 91202

- Pavilions: 1
- Maximum Capacity: 100
- Amenities Include: sink, electrical outlets
- Jumper permitted
- No onsite cooking

### Central Park Paseo

220 S. Brand Blvd., Glendale, CA 91205

- Maximum Capacity: 75
- Amenities Include: electrical outlets



# Facility Reservations

## COMMUNITY BUILDINGS

(818) 548-2184 | (818) 548-2752

[www.glendaleca.gov/reservations](http://www.glendaleca.gov/reservations)

### Griffith Manor Community Room

1551 Flower St., Glendale, CA 91201

- Maximum Capacity: 50
- Amenities Include: tables, chairs, warming oven, refrigerator, sink
- Jumper permitted



### Dunsmore Community Building

4700 Dunsmore Ave., Glendale, CA 91214

Dunsmore Community Room

- Maximum Capacity: 50
- Amenities Include: tables, chairs
- Jumper permitted

Dunsmore Community Room Kitchen

- Amenities Include: sink, warming oven, refrigerator



### Joe Bridges Clubhouse

2531 E. Glenoaks Blvd., Glendale, CA 91206

- Maximum Capacity: 100
- Amenities Include: tables, chairs, warming oven, refrigerator, sink
- Jumper permitted



### Brand Studios

1601 W. Mountain St., Glendale, CA 91201

- Maximum Capacity: 100
- Amenities Include: tables, chairs, microwave, refrigerator, sink
- No onsite cooking





# Facility Reservations

## WEDDING SITES

(818) 548-2184 | (818) 548-2752

[www.glendaleca.gov/reservations](http://www.glendaleca.gov/reservations)

### Brand Friendship Garden & Victorian Gazebo

1601 W. Mountain St., Glendale, CA 91201

- Maximum Capacity: 200
- Amenities Include: 100 white chairs, electrical outlets



### Casa Adobe de San Rafael

1330 Dorothy Dr., Glendale, CA 91202

- Maximum Capacity: 100
- Amenities Include: sink, 100 white plastic chairs, electrical outlets
- Jumper permitted
- No onsite cooking



### Catalina Verdugo Adobe

2211 Bonita Ave., Glendale, CA 91208

- Maximum Capacity: 50
- Amenities Include: electrical outlets, resin picnic tables, fountain, and kitchenette with a counter and sink



# Facility Reservations

## Civic Auditorium

1401 N. Verdugo Rd.  
Glendale, CA 91208  
(818) 548-2787

[www.glendalecivic.com](http://www.glendalecivic.com)

### Steps to Rent:

1. Choose the event type, date & time.
2. Contact the Civic Auditorium at (818) 548-2787 for availability.
3. Visit the Civic Auditorium, 1401 N. Verdugo Rd., Glendale, CA 91208 to reserve the facility.

### Indoor Spaces:

- Upper Auditorium, maximum capacity: 1,100
- Commercial Kitchen on both levels
- Terrace Room, maximum capacity: 125 - *Must be reserved in conjunction with the Upper Auditorium*

### Parking:

- Parking Lot and/or Structure - *Must be reserved in conjunction with the Upper Auditorium*





## Glendale Sports Complex

2200 Fern Lane  
Glendale, CA 91208  
(818) 937-7440

### Steps To Rent:

1. Choose the event type, date & time.
2. Contact the Sports Office at (818) 937-7440 to check on availability and fees.
3. Visit the Sports office to finalize permit requirements.

### Indoor Spaces:

- Meeting Room, maximum capacity: 50

### Outdoor Spaces:

- Majors Artificial Turf Baseball Field with soccer lines for U12
- 2 Natural Grass Softball Fields
- 2 Artificial Turf Soccer Fields



# Facility Reservations

## Pacific Community Pool

509 S. Pacific Ave.  
Glendale, CA 91204  
(818) 937-7433

[www.glendaleaquatics.com](http://www.glendaleaquatics.com)

### Steps To Rent:

1. Choose the event type, date & time.
2. Contact Pacific Community Pool at (818) 937-7433 to check on availability and fees.
3. Visit the pool to finalize permit requirements.

### Outdoor Spaces:

- 25 yard / 6-lane pool
- Shallow end for recreation swim
- 2'-10' depth





## Stone Barn Nature Center at Deukmejian Wilderness Park

3429 Markridge Road  
Glendale, CA 91214  
(818) 937-7428

### Steps To Rent:

1. Choose the event type, date & time.
2. Contact the Stone Barn Nature Center at (818) 937-7428 to check on availability and fees.
3. Visit the Stone Barn Nature Center to finalize permit requirements.

### Outdoor Spaces:

- Outdoor amphitheater area with capacity of 100 & electrical outlets
- Patio of the Stone Barn
- 2 outdoor picnic pavilions available for rentals

### Indoor Spaces:

- Indoor Stone Barn Nature Center (with center exhibits shifted to edges of room) with capacity of 80. Amenities include banquet tables and white folding chairs.



# Facility Reservations

## Verdugo Skate Park

1621 Canada Blvd.

Glendale, CA 91208

**(818) 548-2786 for hours and operation**

**(818) 548-2184 for facility rentals**

### Steps To Rent:

1. Choose the event type, date & time.
2. Contact the Customer Service Office at (818) 548-2184 to check on availability and fees.
3. Visit the Sports Office to finalize permit requirements.

### Outdoor Spaces:

- 15,000 square foot concrete facility
- 6-9 foot Clover Bowl with an 11 foot Over-Vert section
- 6-10 foot Kidney Pool
- Street Plaza with rails and ledges
- Snake Run that empties into a 9 foot bowl with a loveseat





# Phone Directory

## PHONE DIRECTORY

Administration Office (818) 548-2000 Fax: (818) 548-3789

### RECREATION PROGRAMS

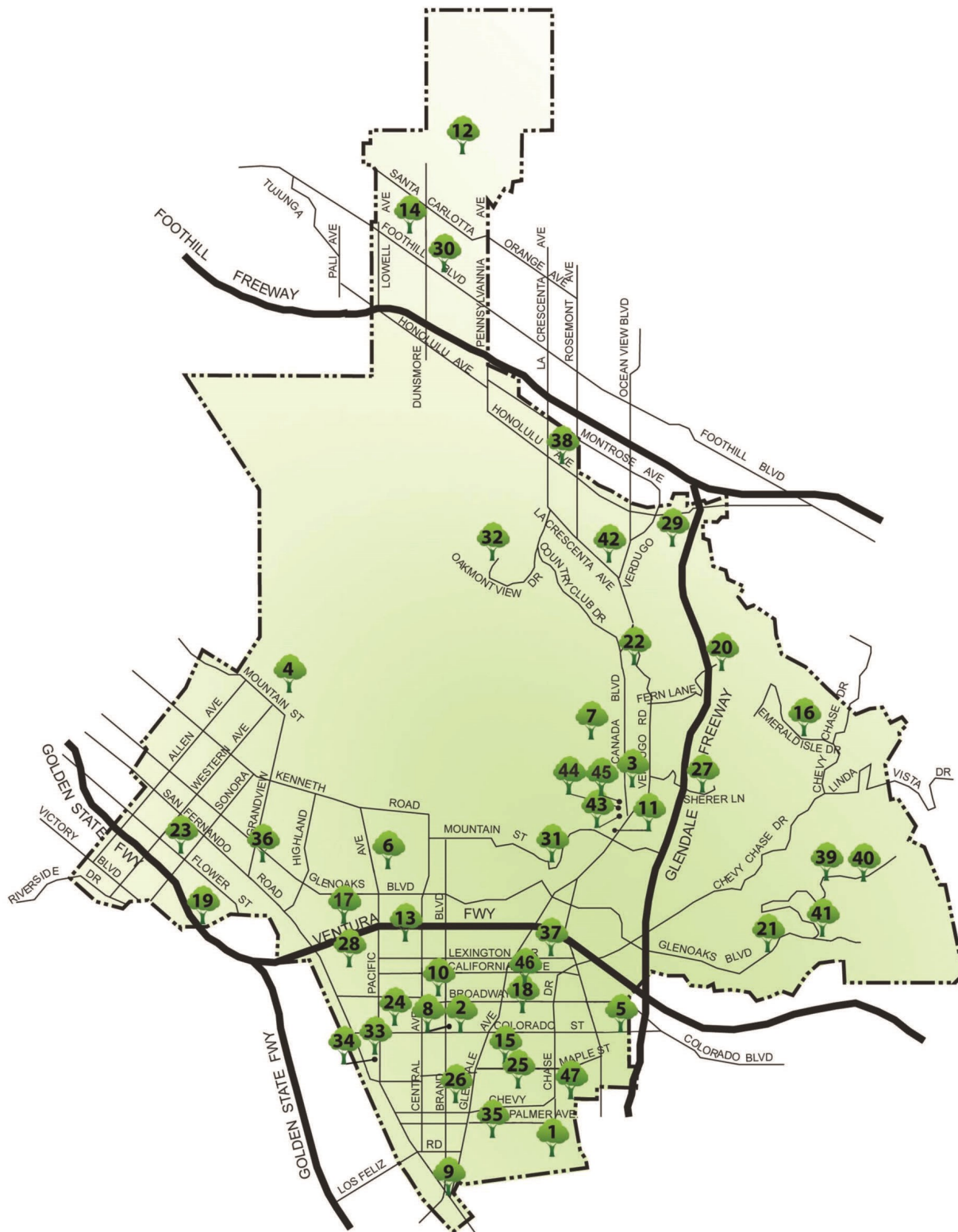
Aquatics Programs .....	(818) 937-7433
Customer Service Office .....	(818) 548-2184, (818) 548-2752
Contract Classes Registration .....	(818) 548-2184, (818) 548-2752
Trails & Open Space Program .....	(818) 548-3795
Party On the Go!/Climbing Wall/Flicks on the Go!.....	(818) 548-2188
Senior Programs & Services .....	(818) 548-3775
Sports Programs for Adults and Youth .....	(818) 937-7440
Therapeutic Recreation Programs .....	(818) 548-3783
Verdugo Skate Park .....	(818) 548-2786
Volunteer Program .....	(818) 548-2792
Youth & Family Services Program .....	(818) 937-7247

### FACILITY RESERVATION AND INFORMATION

Adult Recreation Center .....	(818) 548-3775
Brand Studios .....	(818) 548-2184, (818) 548-2752
Civic Auditorium .....	(818) 548-2787
Film Permits .....	(818) 548-3813
Glendale Sports Complex & Sports Fields .....	(818) 937-7440
Maple Park Community Center .....	(818) 548-3783
Pacific Community Center .....	(818) 548-4098
Pacific Community Pool .....	(818) 937-7433
Park & Picnic Reservations .....	(818) 548-2184, (818) 548-2752
Photography Permits .....	(818) 548-2184, (818) 548-2752
Sparr Heights Community Center .....	(818) 548-2187
Stone Barn Nature Center at Deukmejian Wilderness Park .....	(818) 937-7428
Wading Pool Reservations .....	(818) 937-7440
Wedding Reservations .....	(818) 548-2184, (818) 548-2752

Events and programs may be cancelled due to L.A. County Department of Public Health protocols. For updates, visit [www.glendaleca.gov/LG](http://www.glendaleca.gov/LG).

# Map of Glendale Parks



## PARKS, COMMUNITY CENTERS, HISTORIC SITES, AND SPECIAL USE FACILITIES

Events and programs may be cancelled due to L.A. County Department of Public Health protocols. For updates, visit [www.glendaleca.gov/LG](http://www.glendaleca.gov/LG).



# Facility Information

1	Adams Square Mini Park	<u>1020 E. Palmer Ave. Glendale, CA 91205</u>
2	Adult Recreation Center & Central Park	<u>201 E. Colorado St. Glendale, CA 91205</u>
3	Babe Herman Little League Field	<u>1726 Cañada Blvd. Glendale, CA 91208</u>
4	Brand Park	<u>1601 W. Mountain St. Glendale, CA 91201</u>
5	Carr Park	<u>1615 E. Colorado St. Glendale, CA 91205</u>
6	Casa Adobe de San Rafael & Park	<u>1330 Dorothy Dr. Glendale, CA 91202</u>
7	Catalina Verdugo Adobe	<u>2211 Bonita Dr. Glendale, CA 91208</u>
8	Central Park Paseo	<u>220 S. Brand Blvd, Glendale, CA 91202</u>
9	Cerritos Park	<u>3690 San Fernando Rd. Glendale, CA 91204</u>
10	Chess Park	<u>227 N. Brand Blvd. Glendale, CA 91202</u>
11	Civic Auditorium	<u>1401 N. Verdugo Rd. Glendale, CA 91208</u>
12	Deukmejian Wilderness Park and Stone Barn Nature Center	<u>3429 Markridge Rd. Glendale, CA 91214</u>
13	Doran Gardens Mini Park	<u>327 W. Doran St., Glendale, CA 91203</u>
14	Dunsmore Park	<u>4700 Dunsmore Ave. Glendale, CA 91214</u>
15	Elk Mini Park	<u>800 E. Elk Ave. Glendale, CA 91205</u>
16	Emerald Isle Park	<u>2130 Lenore Dr. Glendale, CA 91206</u>
17	Fremont Park	<u>600 W. Hahn Ave. Glendale, CA 91203</u>
18	Glendale Heritage Garden	<u>141 S. Cedar St. Glendale, CA 91205</u>
19	Glendale Narrows Riverwalk	<u>300 Paula Avenue, Glendale, CA 91201- West Entrance</u>
20	Glendale Sports Complex	<u>2200 Fern Lane Glendale, CA 91208</u>
21	Glenoaks Park	<u>2531 E. Glenoaks Blvd. Glendale, CA 91206</u>
22	Glorietta Park	<u>2801 N. Verdugo Rd. Glendale, CA 91208</u>
23	Griffith Manor Park	<u>1551 Flower St. Glendale, CA 91201</u>
24	Harvard Mini Park	<u>425 W. Harvard Glendale, CA 91204</u>
25	Maple Park and Community Center	<u>820 E. Maple St. Glendale, CA 91205</u>
26	Maryland Avenue Park	<u>812 S. Maryland Avenue, Glendale, CA 91205</u>
27	Mayors Bicentennial Park	<u>1787 Loma Vista Dr. Glendale, CA 91208</u>
28	Milford Mini Park	<u>601 W. Milford Ave. Glendale, CA 91203</u>
29	Montrose Park	<u>3529 Clifton Place, Glendale, CA 91208</u>
30	New York Park	<u>4525 New York Ave. Glendale, CA 91214</u>
31	Nibley Park	<u>1103 E. Mountain St. Glendale, CA 91207</u>
32	Oakmont View Park	<u>2940 Oakmont View Dr. Glendale, CA 91208</u>
33	Pacific Park & Community Center	<u>501 S. Pacific Ave. Glendale, CA 91204</u>
34	Pacific Community Pool	<u>509 S. Pacific Ave. Glendale, CA 91204</u>
35	Palmer Park	<u>610 E. Palmer Ave. Glendale, CA 91205</u>
36	Pelanconi Park	<u>1000 Grandview Ave. Glendale, CA 91201</u>
37	Piedmont Park	<u>1145 E. Lexington Dr. Glendale, CA 91206</u>
38	Rockhaven - CLOSED FOR PUBLIC USE	<u>2713 Honolulu Ave., Glendale, CA 91020</u>
39	Scholl Canyon Athletic Fields	<u>3200 E. Glenoaks Blvd. Glendale, CA 91206</u>
40	Scholl Canyon Golf Course & Tennis Center	<u>3800 E. Glenoaks Blvd. Glendale, CA 91206</u>
41	Scholl Canyon Park & Picnic Area	<u>2849 E. Glenoaks Blvd. Glendale, CA 91206</u>
42	Sparr Heights Community Center	<u>1613 Glencoe Way Glendale, CA 91208</u>
43	Stengel Field	<u>1601 Cañada Blvd. Glendale, CA 91208</u>
44	Verdugo Park	<u>1621 Cañada Blvd. Glendale, CA 91208</u>
45	Verdugo Skate Park	<u>1621 Cañada Blvd. Glendale, CA 91208</u>
46	Wilson Mini Park	<u>1101 E. Wilson Glendale, CA 91206</u>
47	Windsor Mini Park	<u>1300 E. Windsor Glendale, CA 91205</u>

Events and programs may be cancelled due to L.A. County Department of Public Health protocols. For updates, visit [www.glendaleca.gov/LG](http://www.glendaleca.gov/LG).

