

City of Glendale, Community Services & Parks

# Leisure Guide

SPRING 2022



**PROGRAMS, ACTIVITIES AND PARKS**  
**CHECK OUT OUR SPRING EGGSTRAVAGANZA event!**



**Parks  
Make  
Life  
Better!**



[www.glendaleca.gov/parks](http://www.glendaleca.gov/parks)

[@MyGlendaleParks](https://www.instagram.com/MyGlendaleParks)

[#MyGlendaleParks](https://www.instagram.com/MyGlendaleParks)

# What's Inside

3	Greetings from the Director
4	E-Newsletter Information
5-10	Special Events
11	Special Events - Historic Facilities
12-14	Party Packages
15	Glendale Youth Alliance
16-17	Day Camps - Registration Information
18-19	Day Camps - Spring Break
20	Specialty Day Camp - Spring Break
21-27	Day Camps - Summer
28-30	Specialty Day Camps - Summer
31-33	Youth & Family Services
34-35	Drop-In Programs
36	Trails & Open Space
37-38	Verdugo Skate Park Programs
39	Aquatics
40	Contract Class Information
41	Registration Information
42-43	Youth Classes
43-45	Youth Sports
46-47	Adult Classes
48-50	Adult Sports
51	GCC Senior Classes
52-57	Senior Classes & Activities
58-59	Senior Services
60	Filming in Parks & Community Buildings
61-62	Tours of Historic Facilities in Glendale Parks
63	Historic Buildings in Glendale Parks
64-74	Facility Reservations
75	Phone Directory
76	Map of Glendale Parks
77	Facility Information

Events and programs in this Leisure Guide may be cancelled due to L.A. County Department of Public Health protocols. For updates, visit [www.glendaleca.gov/LG](http://www.glendaleca.gov/LG).

## Councilmembers

Honorable Paula Devine, *Mayor*  
Vrej Agajanian, Ara Najarian, Ardashes "Ardy" Kassakhian, and Daniel Brotman

## Parks, Recreation & Community Services Commission

Henrik Sardarbegian, *President*  
Commissioners:  
Regina Alcazar, Ara Kalfayan, Stephen Meek, and Susan Wolfson

## CDBG Advisory Committee

Ronnie Gharibian, *Chair*  
Anita Quiñonez Gabrielian, *Vice Chair*  
Committee Members:  
Zanku Armenian, Armik Avedisian, and Noraier Ghazarian

## Management Services

Roubik Golanian, *City Manager*  
John Takhtalian, *Deputy City Manager*

## Community Services & Parks

Onnig Bulanikian, *Director*  
Tereza Aleksanian, *Deputy Director - Admin, R&CS, Human Services*  
Koko Panossian, *Deputy Director - Park Services and Park Planning*  
Judith Velasco, *Workforce Development Administrator*  
Arsine Isayan, *Acting Community Services Manager-Homeless Programs*  
Maggie Kavarian, *Sr. Community Services Supervisor - CDBG*  
Gabrielle Goglia, *Sr. Community Services Supervisor - R&CS*  
Sevag Garabetian, *Sr. Community Services Supervisor - R&CS*

## SATISFACTION GUARANTEE

Satisfaction is guaranteed on all programs. If you are not satisfied with the quality of our programs, for any reason, we encourage you to contact us immediately so that we can work to resolve your concerns and improve the quality of our programs for all participants.

Si tiene necesidad de interpretación, favor de llamar al (818) 548-2782.

Հայերեն տեղեկությունների համար զանգահարել հետևյալ հեռախոսահամարով (818)548-2000

Administration Office: (818) 548-2000

[glendaleca.gov/parks](http://glendaleca.gov/parks)



Follow us on Twitter: [@MyGlendaleParks](https://twitter.com/MyGlendaleParks) and



[facebook.com/MyGlendaleParks](https://facebook.com/MyGlendaleParks)



# Greetings from the Director



## Spring 2022

Bask in the beauty of spring, and give your soul a boost! Let nature inspire you to continue with your 2022 resolutions and bring growth and rejuvenation to your life.

Take advantage of the longer daylight hours by getting the family together or taking some time to yourself and visiting one of our neighborhood parks, trails and open space areas, and historic homes. Reserve one of our picnic areas or community buildings for a fun gathering or celebration, or participate in a vast array of CSP programs, classes, activities and events sure to reenergize you and bring you personal growth. Community Services & Parks has something for everyone!

Youth of all ages are invited to participate in Spring Break Camps, youth sports activities, and Life Long Learning classes. We know the importance of planning ahead, so we've included Summer Day Camp and Aquatics Program information inside too!

Adults are encouraged to enroll in Life Long Learning Classes, such as yoga or visual art; participate in open play badminton; and tennis classes. Our adult programs and activities are offered at a variety of times to meet everyone's busy schedule.

Senior adults will enjoy taking part in ongoing education and leisure programs. A nutritional meals program, and a case management, counseling and referral program are also available.

Last but not least, the Community Services & Parks Department is proud to present several special events this season, including the Cesar Chavez Celebration, Spring Eggstravaganza, and Verdugo Mountains 10K Trail Run & Hike. Plan ahead for the annual Cruise Night event, taking place this summer. Look inside for details.

Don't miss out on the latest information; get on our e-mail list, sign up to receive our monthly CSP Newsletter, and follow us on Twitter and Facebook @MyGlendaleParks. Take a look inside for more information.

Respectfully,

A blue ink signature of Onnig Bulanikian.

**Parks  
Make  
Life  
Better!**

Onnig Bulanikian, Director  
Community Services & Parks Department

# E-Newsletter Information

## Community Services & Parks (CSP) Monthly E-Newsletter

Get the most up-to-date information about what is happening in the Community Services & Parks Department by signing up to receive the department's monthly E-Newsletter.

Learn about upcoming events, community meetings, registration deadlines, parks projects, ongoing programs and services, program success stories, and more.



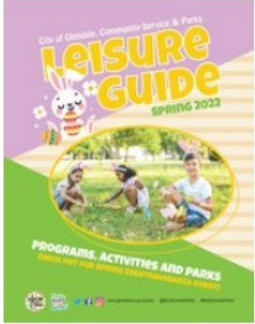
The screenshot shows the top of the newsletter with the City of Glendale seal and the title "Community Services & Parks Newsletter". Below the title is the date "February 2022". A banner below the date reads: "Please visit [www.glendaleca.gov/covid](http://www.glendaleca.gov/covid) for the most up-to-date COVID-19 news."

**Spring 2022 Leisure Guide Coming Soon!**

The Leisure Guide is our quarterly e-publication where you can find information about programs, classes, services, and events that we are offering that season. You'll find classes and activities that suit each person in your family, from tots to seniors.

Want to see a list of all of our parks or learn about our rental facilities? Looking for our department's phone directory? That's inside too!

The Spring 2022 Leisure Guide will be available online by February 14, 2022.



[Leisure Guide](#)



Visit [www.glendaleca.gov/cspnewsletter](http://www.glendaleca.gov/cspnewsletter) to subscribe.

*(P.S. We never make your e-mail address available to any other company or organization.)*



## Special Events

# PARENT'S NIGHT OUT

Drop off the kids for a night of fun activities, friends, food and a movie. The fee is \$15.00 per child, ages 5 to 14 years old. Participants are encouraged to bring pajamas, a blanket and a pillow.

For more information, please call:  
(818) 548-4098 for Pacific Community Center or  
(818) 548-2787 for Sparr Heights Community Center.

### **Pacific Community Center**

501 S. Pacific Ave.  
Glendale, CA 91204

**Dates:** May 6, 2022

**Time:** 6:00 p.m. - 12:00 a.m.

### **Sparr Heights Community Center**

1613 Glencoe Way  
Glendale, CA 91208

**Dates:** April 22, 2022

**Time:** 6:00 p.m. - 12:00 a.m.





# Special Events



## STONE BARN NATURE CENTER GRAND OPENING

**Saturday, March 19, 2022**

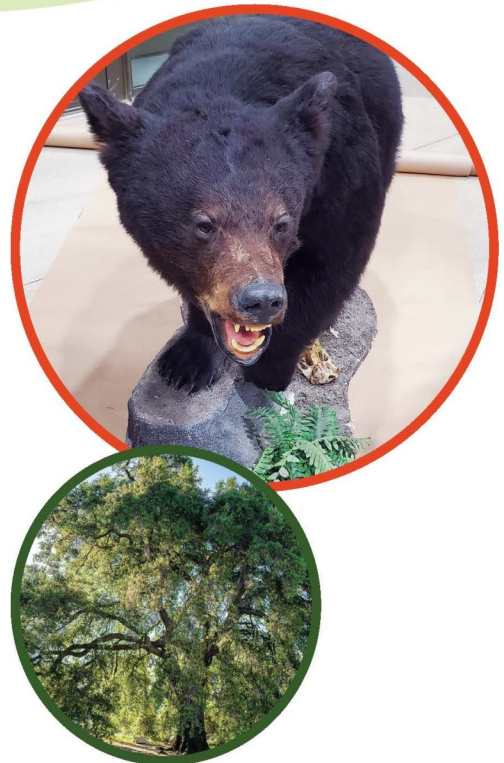
**11:00 A.M. – 1:00 P.M.**

**3429 Markridge Rd., Glendale, CA 91214**

Join us for the grand opening of the Stone Barn Nature Center! Visitors will be treated to the climbing wall, community booths, educational content, a gift shop, and tours of the barn.

For more information, please contact [nmower@glendaleca.gov](mailto:nmower@glendaleca.gov) or call (818) 548-3813.

All L.A. County Department of Public Health protocols must be followed.



Community Services  
& Parks



@MyGlendaleParks

Deukmejian Wilderness,  
© Ales Litomisky, La Crescenta, 2021



# Special Events



The City Of Glendale Invites you to Celebrate the Life and Work of

## CÉSAR CHAVEZ

20th Annual Celebration

**Saturday, March 26, 2022**

**1:00 p.m. - 4:00 p.m.**

Program begins at 2:00 p.m.

**PACIFIC COMMUNITY CENTER**

501 S. Pacific Ave, Glendale, CA 91204

FREE TACOS served from  
1:15 p.m. until food runs out



For additional information call (818) 548-4098 or visit [www.glendaleca.gov](http://www.glendaleca.gov)



@MyGlendale #MyGlendale

## SAVE THE DATE!

# Cruise Night



**Saturday, July 16, 2022**

**5:30 p.m. - 10:30 p.m.**

In the heart of Glendale on Brand Blvd.

Registration includes a swag bag with a free event t-shirt.

NEW this year! Modified Imports and Exotic Cars will be accepted!

[GlendaleCruiseNight.com](http://GlendaleCruiseNight.com)

Information Hotline: (818) 548-6464

**TROPHIES AWARDED!**

(Categories at Judges' discretion)

Fireworks! Live Entertainment! Family Fun & Activities!



@cruisenightglendale #glendalecruisenight





## Special Events

# CELEBRATE SPRING AT RIVERWALK!

Join us for an open house at Glendale Narrows Riverwalk!

We have activities for the whole family!

- Docent-led tours of one of the few places along the LA River with an unpaved bottom.
- Learn about the birds, animals and plants that inhabit this unique place.
- Meet your City departments and local civic organizations, and learn what they are doing to help create a more healthy and sustainable environment for you.



**SATURDAY, APRIL 2, 2022**  
**GLENDALE NARROWS RIVERWALK**  
**300 PAULA AVE, GLENDALE, CA**  
**10AM - 1PM**

Parking is limited.  
Please consider  
walking or biking!

More Info: 818.631.6132  
[info@glendaleparksfoundation.org](mailto:info@glendaleparksfoundation.org)

GLENDAL**PARKS**&  
**OPEN SPACE**  
FOUNDATION

**Parks  
Make  
Life  
Better!**



**Community Services  
& Parks**

Events and programs may be cancelled due to L.A. County Department of Public Health protocols. For updates, visit [www.glendaleca.gov/LG](http://www.glendaleca.gov/LG).



# Special Events



## SPRING Eggstravaganza

**Saturday, April 9, 2022**

**10:00 A.M. - 1:00 P.M.**

Join us for a morning of arts & crafts, carnival games, face painting, Glendale ROCKS! Climbing Wall, egg hunt, prizes and an appearance from the Easter Bunny.

### Egg Hunting

**10:30 a.m.** - 4 Year Olds & Younger

**10:50 a.m.** - 5 Year Olds

**11:10 a.m.** - 6 Year Olds

**11:30 a.m.** - 7 Year Olds

**11:50 a.m.** - 8 Year Olds

**12:10 p.m.** - 9 Year Olds

**12:25 p.m.** - 10 Year Olds

**12:40 p.m.** - 11 & 12 Year Olds

*Please don't forget to bring your baskets.*

*Adults will not be permitted on the field for age groups 5 years old and older.*

### Pacific Community Center

501 S. Pacific Ave., Glendale, CA 91204

**For more information, call 818-548-4098.**



Community Services  
& Parks

Parks  
Make  
Life  
Better!



@myglendaleparks



Events and programs may be cancelled due to L.A. County Department of Public Health protocols. For updates, visit [www.glendaleca.gov/LG](http://www.glendaleca.gov/LG).

## Special Events

### Verdugo Mountains 10K Trail Run & Hike

Brand Park  
1601 W. Mountain St., Glendale, CA 91201  
Sunday, May 1, 2022  
8:00 a.m.

Register today!  
[www.runtheverdugos.com](http://www.runtheverdugos.com)



Community Services  
& Parks



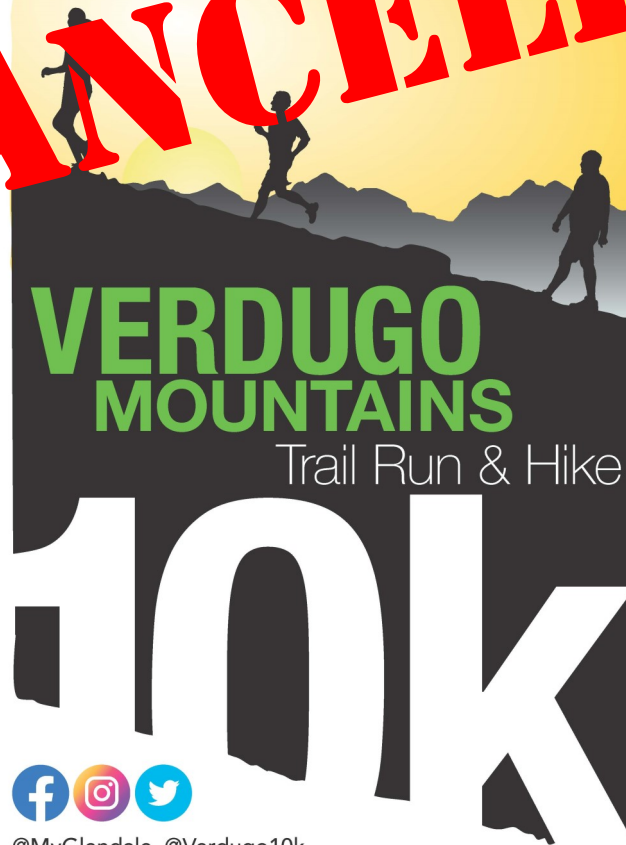
Presents

GLENDAL PARKS &  
OPEN SPACE  
FOUNDATION

[www.runtheverdugos.com](http://www.runtheverdugos.com)

10<sup>TH</sup> ANNIVERSARY

**CANCELLED**



@MyGlendale @Verdugo10k

GLENDAL, CA MAY 1, 2022



# Special Events - Historic Facilities

## "Shoseian" Whispering Pine Teahouse & Friendship Garden

Inside Brand Park, 1601 West Mountain St., Glendale, CA 91201; (310) 849-5432



Join the Friends of the Shoseian Teahouse every third Sunday of the month for family friendly events.

Visit [www.glendaleteahouse.org](http://www.glendaleteahouse.org) for more information. Please RSVP to: [info@glendaleteahouse.org](mailto:info@glendaleteahouse.org)

---

## Casa Adobe de San Rafael

1330 Dorothy Dr., Glendale, CA 91202; (818) 396-6840.

Now through June, volunteer members of Glendale Beautiful, a local non-profit dedicated to keeping our city beautiful and preserving our early California history, host an open house at the historic Casa Abode de San Rafael from 1:00 p.m. to 3:00 p.m. on the 1st Sunday of each month only. Information describing the Casa in Armenian, English, and Spanish is available, and docents can answer questions and add background during these times.

The historic casa was built for Tomas and Maria Sanchez from adobe bricks made on site. The home was completed in 1871 and is furnished in late 19th-century style. Casa Adobe is California Landmark #235, and is Glendale Register of Historic Resources #3. There is a suggested donation of \$2.00 per person to help Glendale Beautiful care for the Casa. Please call (818) 396-6840 for more information or questions.



Events and programs may be cancelled due to L.A. County Department of Public Health protocols. For updates, visit [www.glendaleca.gov/LG](http://www.glendaleca.gov/LG).

# Party Packages



## Mobile Recreation

City of Glendale

# Party on the Go!

Each party package is designed for children ages 5 - 12 and will include arts and crafts, sports and games. The basic "Party on the Go!" package will include two staff for two hours and 6 games/activities for up to 12 children. Additional fees will apply for larger packages.

Programs limited to the Glendale and La Crescenta area. FEES:

- Standard pricing: \$300 for the first 2 hours
- \$100 for every hour thereafter
- (Non-profit rates available upon request and approval with proper tax status documentation)

Half of the total rental fees are due at the time of reservation to guarantee date.



Standard Package includes six (6) from the following:

### Games

Potato Sack Races  
Capture the Flag  
Balloon Toss  
Bingo  
Hula Hoop Contest  
Frisbee Distance Throw  
Obstacle Course

### Arts and Crafts

Paint art  
Clay art  
Foamy art  
Bead art  
Wooden art  
Glitter art  
Coloring



For program information, please call (818) 548-2188.



# Party Packages



## Flicks on the Go! Mobile Movie Package

Watching a movie under the moonlight brings back the days of the drive-in era and will surely have nostalgic appeal to families throughout our community. Watching a movie, playing video games or streaming content on a large screen during your outdoor special event will definitely elevate your event and add a hip factor. We have two packages available for your special event!

### Flicks on the Go! – Package A

- 17 foot wide by 10 foot tall large projection screen with high powered video projection
- High Powered Sound System with 4 Speakers up to 1,000 Watt max output each
- Blue Ray DVD Player (*Customer is responsible to pay license fees and obtain rights to display content*)
- Generator to provide power
- 3 employees for delivery, installation, operation and breakdown
- A popcorn machine, carnival games, craft tables are available for an additional fee

### Flicks on the Go! – Package B

- 15 foot wide by 8 foot tall LED Screen with 936 X 520p (4.81mm) resolution
- Height Adjustable and full 360 degree rotation for optimal viewing
- High Powered Sound System with 2 Speakers up to 1,000 Watt max output each
- Blue Ray DVD Player
- Dish Network Satellite Feed (*Customer is responsible to pay license fees and obtain rights to display content*)
- HDMI and SDI auxiliary inputs for live feed
- HDMI auxiliary input for gaming consoles (*Gaming console not included*)
- Generator to provide power
- A popcorn machine, carnival games, craft tables are available for an additional fee

For program information, please call (818) 548-2188.



## Party Packages

# Glendale Rocks!

## Climbing Wall



**Glendale Rocks! portable climbing wall is 26 vertical feet of pure fun and excitement! The wall can be used for fundraisers, company events, grand openings, physical education classes or special events. The wall can handle 4 climbers at a time and up to 45 climbers per hour. The standard rental package will include two employees, the wall, and safety equipment for a two hour period.**

Programs limited to the Glendale and La Crescenta area.

### **FEES:**

- Standard pricing: \$300 for the first 2 hours
- \$100 for every hour thereafter
- Non profit rates available upon request and approval with proper tax status documentation

Half of the total rental fees are due at the time of reservation to guarantee date.

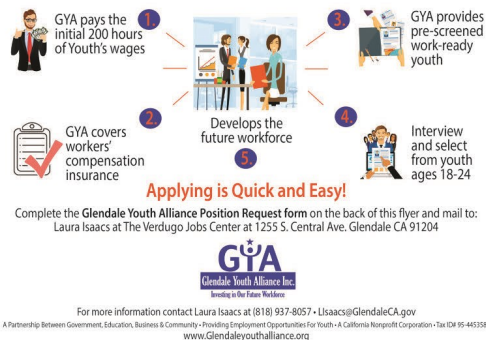
**For program information, please call (818) 548-2188.**

# Glendale Youth Alliance



Make a difference in our community by investing in our local youth and hiring through GYA!

## Business Owners



## Private Property Owners

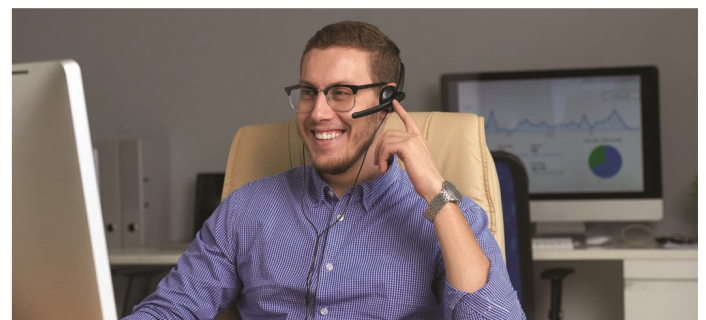


Hire our supervised teams to perform hillside brush clearance on your property for a reasonable fee. GYA teams can also be hired for other general labor tasks. All work teams are fully insured, supervised and have their own tools and transportation. Reasonable Prices! Quality of work guaranteed!

### Services Available:

- Hillside clearance
- Yard maintenance
- Landscaping
- Brush abatement & clearance
- Property clean up and general labor tasks
- Mudslide prevention work

For a free estimate, call (818) 548-3727.



## Need additional help with your operations?

Hire through the GREAT program, and we can place an employee in a short time frame. It's easy and hassle free. GYA will provide pre-screened youth, cover the workers' compensation insurance and payroll. Your business will be billed bi-monthly for the youth wages. Call us today at (818) 937-8056.

For more information about GYA programs, please call (818) 937-8073, or visit us at [www.glendaleyouthalliance.org](http://www.glendaleyouthalliance.org).

Like us on Facebook and stay connected!



# Day Camp Registration Information

The Community Services & Parks Department is pleased to offer day camps each season. Please see the individual camp listings for specific details on each camp.

## Camps in this Issue: Important Dates

<u>Season</u>	<u>Scholarship/Discount Applications Due by 5 p.m.</u>	<u>Registration Begins</u>	<u>Camp Dates</u>
Spring Break	Deadline Passed	February 10, 2022	March 14-18, 2022
Summer	March 28, 2022	April 25, 2022 (Glendale Resident ONLY) April 27, 2022 (General Registration)	June 13 - August 12, 2022

## Registration

**Online:** Registration is available at [www.myglendaleparks.com](http://www.myglendaleparks.com).

**Phone:** Call the community center where the camp is taking place, or the Customer Service Office at (818) 548-2752.

**In Person:** Visit the community center where the camp is taking place or the Customer Service Office located at the Civic Auditorium, 1401 N. Verdugo Rd., Glendale, CA 91208.

## Residency Status

The Community Services & Parks Department (CSP) offers reduced Glendale Resident rates for day camps to customers who reside within Glendale Unified School District boundaries and have provided the required proof of residency. Customers only need to verify residency once per year during any season, but must re-submit proof every summer regardless of which season residency status was last verified. **Proof of residency can be provided at the time of in-person camp registration, but in order to obtain Glendale Resident rates while registering online or by phone, residency status must be verified in advance.**

You can obtain residency status in advance of camp registration by emailing a copy of your two most recent utility bills or a copy of your current, executed rental agreement to our Customer Service Office at [cspcustomerservice@glendaleca.gov](mailto:cspcustomerservice@glendaleca.gov). Please include your full name, valid address, and a copy of the proof in the email. Emails will be reviewed within two (2) business days, and you will receive an email response confirming residency when it has been completed.

**Customers not verified as Glendale Residents at the time of registration will be charged non-resident rates and will NOT be refunded the difference for any non-resident rates paid, even if proof is provided at a later time. 2022 residency verification begins on March 21, 2022!**

You may also pre-register in person during business hours at any of the following locations:

**Adult Recreation Center**  
201 E. Colorado Street  
Glendale, CA 91205  
(818) 548-3775

**Customer Service Office**  
1401 N. Verdugo Rd.  
Glendale, CA 91208  
(818) 548-2184

**Glendale Sports Complex**  
2200 Fern Lane  
Glendale, CA 91208  
(818) 548-6420

**Pacific Community Center**  
501 S. Pacific Ave.  
Glendale, CA 91204  
(818) 548-4098

**Pacific Community Pool**  
509 S. Pacific Ave.  
Glendale, CA 91204  
(818) 937-7433

**Maple Park Community Center**  
820 E. Maple St.  
Glendale, CA 91205  
(818) 548-3694

**Sparr Heights Community Center**  
1613 Glencoe Way  
Glendale, CA 91208  
(818) 548-2188

Events and programs may be cancelled due to L.A. County Department of Public Health protocols. For updates, visit [www.glendaleca.gov/LG](http://www.glendaleca.gov/LG).

# Day Camp Registration Information

## Scholarship and Discount Opportunities

Glendale residents may be eligible to receive a scholarship for camps at Maple Park Community Center or Pacific Community Center. A discount is also available for Glendale residents at all locations, based on household income levels. Please visit [www.glendaleca.gov/daycamps](http://www.glendaleca.gov/daycamps) and click on Scholarship and Discount Opportunities for details.

## Late Registration and Cancellation Policy

- A \$20 late registration fee will be charged per camper for payments not received by Wednesday at 5:00 p.m. prior to the week for which you are registering.
- A cancellation fee of \$20 per week, per child will be assessed for all transfers and cancellations of camp locations, dates of enrollment, or participation.

## Day Camp T-Shirts

A camp T-shirt may be purchased at camp for \$5 (cash or check). Shirts must be purchased for camps that go on excursion and must be worn on excursion day.

## Special Needs Accommodations

The Community Services & Parks Department will provide reasonable accommodations toward the inclusion of a participant. Please contact the Therapeutic Recreation Program supervisor at (818) 548-3783 two weeks prior to the start of the program. Ample time is required to determine the needs for each request. Children who are accompanied by a one-to-one aide must have the aide present during their time in the program. All aides must undergo a background check through the City of Glendale, and must be approved before beginning work. **Children who require an aide may not begin the program without an approved aide.**

## Payment Methods

**Online:** Credit Card

**Over the Phone:** Credit Card\*

**In Person:** Cash, Check, or Credit Card\*

\* All In-Person and Phone Credit Card transactions will incur a non-refundable 2.5% service fee.



Events and programs may be cancelled due to L.A. County Department of Public Health protocols. For updates, visit [www.glendaleca.gov/LG](http://www.glendaleca.gov/LG).



# Day Camps - Spring Break

## Kool Dayz Spring Camp

### Pacific Community Center

501 S. Pacific Ave., Glendale, CA 91204

For information, call (818) 548-4098

Kids will have fun making crafts, playing sports and games, competing in contests and making new friends. Campers must provide their own lunch, drink and snacks daily.

### 5-Day Camp

**Dates:** Monday - Friday, March 14 - 18, 2022

**Ages:** 6-12

	<u>Glendale</u> <u>Resident Fees</u>	<u>Non-Resident Fees</u>	<u>Times</u>
<b>Full Day</b>	\$85/week/child	\$100/week/child	9:00 a.m. - 4:00 p.m.
<b>Before Care</b>	\$20/week/child	\$20/week/child	7:00 a.m. - 9:00 a.m.
<b>After Care</b>	\$20/week/child	\$20/week/child	4:00 p.m. - 6:00 p.m.



Events and programs may be cancelled due to L.A. County Department of Public Health protocols. For updates, visit [www.glendaleca.gov/LG](http://www.glendaleca.gov/LG).

# Day Camps - Spring Break

## Travelin' Teens Spring Camp

### Pacific Community Center

501 S. Pacific Ave., Glendale, CA 91204

For information, call (818) 548-4098

Teen campers will explore fun Glendale locations and surrounding communities by foot or using local bus lines. Teens will make new friends, go on a field trip, and chill with other teens. Campers must provide their own lunch, drink, and snacks daily.

#### 5-Day Camp

**Dates:** Monday - Friday, March 14 - 18, 2022

**Ages:** 12-14

	<u>Glendale Resident Fees</u>	<u>Non-Resident Fees</u>	<u>Times</u>
<b>Full Day</b>	\$85/week/child	\$100/week/child	9:00 a.m. - 4:00 p.m.
<b>Before Care</b>	\$20/week/child	\$20/week/child	7:00 a.m. - 9:00 a.m.
<b>After Care</b>	\$20/week/child	\$20/week/child	4:00 p.m. - 6:00 p.m.



## Sparr-Tacular Spring Camp

### Sparr Heights Community Center

1613 Glencoe Way, Glendale, CA 91208

For information, call (818) 548-2187

Flowers are blooming and Spring Break fun is here at the Sparr Heights Community Center! Children ages 6 - 12 will enjoy games, crafts, and a special treat on Friday. Children must bring a sack lunch Monday through Thursday.

#### 5-Day Camp

**Dates:** Monday - Friday, March 14 - 18, 2022

**Ages:** 6-12

	<u>Glendale Resident Fees</u>	<u>Non-Resident Fees</u>	<u>Times</u>
<b>Half Day</b>	\$65/week/child	\$80/week/child	12:00 p.m. - 6:00 p.m.



# Specialty Camps - Spring Break

## Spring Skate Camps

**Verdugo Skate Park**  
**1621 Cañada Blvd., Glendale, CA 91208**

Join THE SKATESIDE for spring camp this spring! This is a skateboard skill-focused camp that brings you everything you love about skateboarding. Learn how to shred the Verdugo Skate Park, and learn basic skateboard skills or take your skills to the next level. Great for beginners just starting, and skaters who want to advance past intermediate. Helmet, elbow pads, knee pads, and wrist guards are required to participate. All LA County Department of Public Health protocols for COVID-19 safety will be enforced.

### 1-Day Camps

**Ages:** 5-16

	<u>Dates</u>	<u>Fee</u>	<u>Time</u>
<b>Camp 1:</b>	March 21	\$135/child	9:00 a.m. - 12:50 p.m.
<b>Camp 2:</b>	April 30	\$135/child	9:00 a.m. - 12:50 p.m.
<b>Camp 3:</b>	May 30	\$135/child	9:00 a.m. - 12:50 p.m.



### Spring Break Camp: 5-Day Camp

**Ages:** 5-16

**Dates:** Monday - Friday, March 14 -18, 2022

<u>Fee</u>	<u>Time</u>
\$469/week/child	9:00 a.m. - 1:00 p.m.

## Evolution Basketball Spring Break Camp

**Verdugo Park (South End), on the Basketball Court**  
**1621 Cañada Blvd., Glendale, CA 91208**

Evolution Basketball teaches the fundamental movement skills and overall motor skills for basketball. The courses are designed to teach the fundamental concepts of basketball, dribbling and passing, shot techniques, spatial awareness, and teamwork. Levels are age-appropriate, and gradually increase children's ability to help them play the sport of basketball. A jersey is included for all participants.

### 3-Day Spring Break Camp

**Dates:** Monday - Wednesday, March 14 - 16, 2022

**FEE:** \$99

<u>Number</u>	<u>Level/Ages</u>	<u>Times</u>
340806-01	Level 2 (5-7 years)	3:30 p.m. - 6:30 p.m.
340806-02	Level 3 (8-12 years)	3:30 p.m. - 6:30 p.m.



# Day Camps - Summer

## Kool Dayz Summer Camp

**Pacific Community Center**  
501 S. Pacific Ave., Glendale, CA 91204  
For information, call (818) 548-4098

Campers will spend the day with old friends and make new ones in a fun, supervised, indoor and outdoor setting. Swimming, games, arts and crafts, music, dance and sports are part of the Kool day. Hot/Cold lunch will be provided as part of the GUSD Seamless Summer Lunch Program. Lunch will not be provided during Week 9 of camp, August 8-12, 2022.

**Dates:** Monday - Friday, June 13 - August 12, 2022  
**Ages:** 6 - 12 ( Child must be 6 years old by August 12, 2022)

		<u>Weekly Theme</u>
<b>Week 1:</b>	June 13-17	TBD
<b>Week 2:</b>	June 21-24*	TBD
	(no camp on Monday, June 20)	
<b>Week 3:</b>	June 27-July 1	TBD
<b>Week 4:</b>	July 5-8*	TBD
	(No camp on Monday, July 4)	
<b>Week 5:</b>	July 11-15	TBD
<b>Week 6:</b>	July 18-22	TBD
<b>Week 7:</b>	July 25-29	TBD
<b>Week 8:</b>	August 1-5	TBD
<b>Week 9:</b>	August 8-12	TBD

	<u>Glendale Resident Fee</u>	<u>Non-Resident Fee</u>	<u>Time</u>
<b>Full Day</b>	\$ 85/week/child	\$100/week/child	9:00 a.m. - 4:00 p.m.
<b>Half Day Morning</b>	\$ 60/week/child	\$ 75/week/child	9:00 a.m. - 1:00 p.m.
<b>Half Day Afternoon</b>	\$ 60/week/child	\$ 75/week/child	12:00 p.m. - 4:00 p.m.
<b>Before Care</b>	\$ 20/week/child	\$ 20/week/child	7:00 a.m. - 9:00 a.m.
<b>After Care</b>	\$ 20/week/child	\$ 20/week/child	4:00 p.m. - 6:00 p.m.

\* Fees will be reduced for shorter weeks.



Events and programs may be cancelled due to L.A. County Department of Public Health protocols. For updates, visit [www.glendaleca.gov/LG](http://www.glendaleca.gov/LG).



# Day Camps - Summer



## Kinder Summer Camp

**Pacific Community Center**  
**501 S. Pacific Ave., Glendale, CA 91204**  
**For information, call (818) 548-4098**

Kinder Camp is a great way to introduce your preschooler or kindergartener to day camp. Your camper will interact with other campers, make new friends, and develop social skills. Campers will have indoor and outdoor games, sports, arts and crafts, and story time. Hot/Cold lunch will be provided as part of the GUSD Seamless Summer Lunch Program. Lunch will not be provided during Week 9 of camp, August 8-12, 2022. Parents will need to pre-purchase meal cards or send a prepaid credit card with their child for cashless field trip locations. This will allow campers to purchase food on field trips where no outside food or cash is permitted by the location.

**Dates:** Monday - Friday, June 13 - August 12, 2022  
**Ages:** 4 - 5 ( Child must be 4 years old by August 12, 2022 and be able to perform restroom tasks independently.)

		<u>Weekly Theme</u>
<b>Week 1:</b>	June 13-17	TBD
<b>Week 2:</b>	June 21-24* (no camp on Monday, June 20)	TBD
<b>Week 3:</b>	June 27-July 1	TBD
<b>Week 4:</b>	July 5-8* (No camp on Monday, July 4)	TBD
<b>Week 5:</b>	July 11-15	TBD
<b>Week 6:</b>	July 18-22	TBD
<b>Week 7:</b>	July 25-29	TBD
<b>Week 8:</b>	August 1-5	TBD
<b>Week 9:</b>	August 8-12	TBD

	<u>Glendale</u> <u>Resident Fee</u>	<u>Non-Resident Fee</u>	<u>Time</u>
<b>Full Day</b>	\$ 105/week/child	\$120/week/child	9:00 a.m. - 4:00 p.m.
<b>Half Day Morning</b>	\$ 60/week/child	\$ 75/week/child	9:00 a.m. - 1:00 p.m.
<b>Half Day Afternoon</b>	\$ 60/week/child	\$ 75/week/child	12:00 p.m. - 4:00 p.m.
<b>Before Care</b>	\$ 20/week/child	\$ 20/week/child	7:00 a.m. - 9:00 a.m.
<b>After Care</b>	\$ 20/week/child	\$ 20/week/child	4:00 p.m. - 6:00 p.m.

\* Fees will be reduced for shorter weeks.

Events and programs may be cancelled due to L.A. County Department of Public Health protocols. For updates, visit [www.glendaleca.gov/LG](http://www.glendaleca.gov/LG).

# Day Camps - Summer



## Travelin' Teens Summer Camp

### Pacific Community Center

501 S. Pacific Ave., Glendale, CA 91204

For information, call (818) 548-4098

Teen campers will explore fun Glendale locations and surrounding communities. Teens will make new friends, swim, go on field trips and chill with other teens. Field trips may include beach trip, movies, bowling, hiking, skating, Citywalk, the LA Zoo, and more! The cost of field trips is not included in the registration fee. Participants will have to spend their own money when going on these field trips. Staff will try to limit the additional out-of-pocket expense to \$20.00 per participant, per week. Hot/Cold lunch will be provided as part of the GUSD Seamless Summer Lunch Program. Lunch will not be provided during Week 9 of camp, August 8-12, 2022.

### 5-Day Camp

**Dates:** Monday - Friday, June 13 - August 12, 2022  
**Ages:** 12-14 Child must be 12 years old by August 12, 2022)

		<u>Weekly Theme</u>
<b>Week 1:</b>	June 13-17	TBD
<b>Week 2:</b>	June 21-24*	TBD
	(no camp on Monday, June 20)	
<b>Week 3:</b>	June 27-July 1	TBD
<b>Week 4:</b>	July 5-8*	TBD
	(No camp on Monday, July 4)	
<b>Week 5:</b>	July 11-15	TBD
<b>Week 6:</b>	July 18-22	TBD
<b>Week 7:</b>	July 25-29	TBD
<b>Week 8:</b>	August 1-5	TBD
<b>Week 9:</b>	August 8-12	TBD

	<u>Glendale Resident Fees</u>	<u>Non-Resident Fees</u>	<u>Times</u>
<b>Full Day</b>	\$85/week/child	\$100/week/child	9:00 a.m. - 4:00 p.m.
<b>Before Care</b>	\$20/week/child	\$ 20/week/child	7:00 a.m. - 9:00 a.m.
<b>After Care</b>	\$20/week/child	\$ 20/week/child	4:00 p.m. - 6:00 p.m.

\* Fees will be reduced for shorter weeks.

Events and programs may be cancelled due to L.A. County Department of Public Health protocols. For updates, visit [www.glendaleca.gov/LG](http://www.glendaleca.gov/LG).



# Day Camps - Summer

## Maple Starz Summer Camp

### Maple Park Community Center

820 E. Maple St., Glendale, CA 91205

For information, call (818) 548-3694 or (818) 548-3783

Children will spend the day with old friends and make new ones in a fun, supervised, indoor and outdoor setting. Games, arts and crafts, music, sports, and water fun are included in the fee. Space is limited; register early. Hot/Cold lunch will be provided as part of the GUSD Seamless Summer Lunch Program. Lunch will not be provided during Week 9 of camp, August 8-12, 2022.

**Dates:** Monday - Friday, June 13 - August 12, 2022

**Ages:** 6 - 12 ( Child must be 6 years old by August 12, 2022)

		<u>Weekly Theme</u>
<b>Week 1:</b>	June 13-17	TBD
<b>Week 2:</b>	June 21-24*	TBD
	(no camp on Monday, June 20)	
<b>Week 3:</b>	June 27-July 1	TBD
<b>Week 4:</b>	July 5-8*	TBD
	(No camp on Monday, July 4)	
<b>Week 5:</b>	July 11-15	TBD
<b>Week 6:</b>	July 18-22	TBD
<b>Week 7:</b>	July 25-29	TBD
<b>Week 8:</b>	August 1-5	TBD
<b>Week 9:</b>	August 8-12	TBD

	<u>Glendale Resident Fee</u>	<u>Non-Resident Fee</u>	<u>Time</u>
<b>Full Day</b>	\$ 75/week/child	\$ 90/week/child	9:00 a.m. - 4:00 p.m.
<b>Half Day Morning</b>	\$ 60/week/child	\$ 75/week/child	9:00 a.m. - 1:00 p.m.
<b>Half Day Afternoon</b>	\$ 60/week/child	\$ 75/week/child	12:00 p.m. - 4:00 p.m.
<b>Before Care</b>	\$ 20/week/child	\$ 20/week/child	7:00 a.m. - 9:00 a.m.
<b>After Care</b>	\$ 20/week/child	\$ 20/week/child	4:00 p.m. - 6:00 p.m.

\* Fees will be reduced for shorter weeks.



# Day Camps - Summer



## Sparr-Tacular Summer Camp

**Sparr Heights Community Center**  
1613 Glencoe Way, Glendale, CA 91208  
For information, call (818) 548-2187

It's time for summer fun at Sparr Heights Community Center! Children ages 6 -12 will enjoy games, crafts, and a special treat on Fridays. Children must bring a sack lunch Monday through Thursday.

**Dates:** Monday - Friday, June 13 - August 12, 2022  
**Ages:** 6 - 12 (Child must be 6 years old by August 12, 2022)

		<u>Weekly Theme</u>
<b>Week 1:</b>	June 13-17	TBD
<b>Week 2:</b>	June 21-24*	TBD
	(no camps on Monday, June 20)	
<b>Week 3:</b>	June 27-July 1	TBD
<b>Week 4:</b>	July 5-8*	TBD
	(No camp on Monday, July 4)	
<b>Week 5:</b>	July 11-15	TBD
<b>Week 6:</b>	July 18-22	TBD
<b>Week 7:</b>	July 25-29	TBD
<b>Week 8:</b>	August 1-5	TBD
<b>Week 9:</b>	August 8-12	TBD

<u>Glendale</u> <u>Resident Fee</u>	<u>Non-Resident Fee</u>	<u>Time</u>
\$65/week/child	\$80/week/child	12:00 p.m. - 6:00 p.m.

\* Fees will be reduced for shorter weeks.

Events and programs may be cancelled due to L.A. County Department of Public Health protocols. For updates, visit [www.glendaleca.gov/LG](http://www.glendaleca.gov/LG).



# Day Camps - Summer



## Summer Blast Camp

**Brand Studios at Brand Park**  
**1601 W. Mountain St., Glendale, CA 91201**  
**For information, call (818) 548-2792**

Camp activities include arts and crafts, sports, games, swimming, a weekly field trip every Tuesday, and movies at camp. Campers must provide their own lunch, drink, and snacks daily. Excursion locations may change. Please visit [www.glendaleca.gov/daycamps](http://www.glendaleca.gov/daycamps) for current information. Parents will need to pre-purchase meal cards or send a prepaid credit card with their child for cashless field trip locations. This will allow campers to purchase food on field trips where no outside food or cash is permitted by the location.

### 5-Day Camp

**Dates:** Monday - Friday, June 13 - August 12, 2022  
**Ages:** 5-12 (Child must be 5 years old by August 12, 2022)

		<u>Weekly Theme</u>
<b>Week 1:</b>	June 13-17	TBD
<b>Week 2:</b>	June 21-24*	TBD
	(no camps on Monday, June 20)	
<b>Week 3:</b>	June 27-July 1	TBD
<b>Week 4:</b>	July 5-8*	TBD
	(No camp on Monday, July 4)	
<b>Week 5:</b>	July 11-15	TBD
<b>Week 6:</b>	July 18-22	TBD
<b>Week 7:</b>	July 25-29	TBD
<b>Week 8:</b>	August 1-5	TBD
<b>Week 9:</b>	August 8-12	TBD

	<u>Glendale Resident Fees</u>	<u>Non-Resident Fees</u>	<u>Times</u>
<b>Full Day</b>	\$120/week/child	\$135/week/child	9:00 a.m. - 4:00 p.m.
<b>Before Care</b>	\$ 20/week/child	\$ 20/week/child	7:00 a.m. - 9:00 a.m.
<b>After Care</b>	\$ 20/week/child	\$ 20/week/child	4:00 p.m. - 6:00 p.m.

\* Fees will be reduced for shorter weeks.

Events and programs may be cancelled due to L.A. County Department of Public Health protocols. For updates, visit [www.glendaleca.gov/LG](http://www.glendaleca.gov/LG).

# Day Camps - Summer

## Summer Spectacular Camp

**Verdugo Park**  
**1621 Canada Blvd., Glendale, CA 91208**  
**For information, call (818) 548-2792**

Camp activities include arts and crafts, sports, games, swimming, a weekly field trip every Wednesday, movies at camp, weekly theme activities, camper choice days and fun with friends. Campers must provide their own lunch, drink, and snacks daily. Excursion locations may change. Please visit [www.glendaleca.gov/daycamps](http://www.glendaleca.gov/daycamps) for current information. Parents will need to pre-purchase meal cards or send a prepaid credit card with their child for cashless field trip locations. This will allow campers to purchase food on field trips where no outside food or cash is permitted by the location.

### 5-Day Camp

**Dates:** Monday - Friday, June 13 - August 12, 2022  
**Ages:** 6-14 Child must be 6 years old by August 12, 2022)

		<u>Weekly Theme</u>
<b>Week 1:</b>	June 13-17	TBD
<b>Week 2:</b>	June 21-24* (no camps on Monday, June 20)	TBD
<b>Week 3:</b>	June 27-July 1	TBD
<b>Week 4:</b>	July 5-8* (No camp on Monday, July 4)	TBD
<b>Week 5:</b>	July 11-15	TBD
<b>Week 6:</b>	July 18-22	TBD
<b>Week 7:</b>	July 25-29	TBD
<b>Week 8:</b>	August 1-5	TBD
<b>Week 9:</b>	August 8-12	TBD

	<u>Glendale Resident Fees</u>	<u>Non-Resident Fees</u>	<u>Times</u>
<b>Full Day</b>	\$150/week/child	\$165/week/child	9:00 a.m. - 6:00 p.m.
<b>Before Care</b>	\$ 20/week/child	\$ 20/week/child	7:00 a.m. - 9:00 a.m.

\* Fees will be reduced for shorter weeks.



Events and programs may be cancelled due to L.A. County Department of Public Health protocols. For updates, visit [www.glendaleca.gov/LG](http://www.glendaleca.gov/LG).



# Specialty Camps - Summer

## Specialty Skate Camps

### Verdugo Skate Park

1621 Cañada Blvd., Glendale, CA 91208

For information, call (818) 548-2786 or (818) 548-2792

**Dates:** Monday - Friday, July 18 - August 12, 2022

**Ages:** 6 - 17 (Child must be 6 years old by August 12, 2022)

	<u>Wednesday Excursion</u>
<b>Week 1:</b> July 18-22	TBD
<b>Week 2:</b> July 25-29	TBD
<b>Week 3:</b> August 1-5	TBD
<b>Week 4:</b> August 8-12	TBD



### "GROMS" SK8 CAMP (Beginning Level)

The camp includes skating instruction and activities held at the Verdugo Skate Park. In addition, skaters will go on a midweek excursion with the "Shredders" Traveling Sk8 Campers, and will go swimming at Pacific Community Pool one day. Participants must provide their own lunch and water daily (participants may NOT leave the camp site to get food in the area). Skaters must provide their own skateboard, helmet, and elbow and knee pads. Weekly excursions are held on Wednesday. Parents will need to pre-purchase meal cards or send a prepaid credit card with their child for cashless field trip locations. This will allow campers to purchase food on field trips where no outside food or cash is permitted by the location.

	<u>Fee</u>	<u>Time</u>
<b>Full Day</b>	\$225/week/child	9:00 a.m. - 4:00 p.m.
<b>Before Care</b>	\$ 20/week/child	7:00 a.m. - 9:00 a.m.
<b>After Care</b>	\$ 20/week/child	4:00 p.m. - 6:00 p.m.

### "Shredders" Traveling SK8 Camp (Intermediate/Advanced Level)

The camp includes activities at the Verdugo Skate Park, a visit to at least 2 other skate parks per week, swimming, and a midweek excursion. Some of the parks that campers may visit include Montclair, Oxnard, and Duarte Skate Parks. Participants must provide their own lunch and water daily. Skaters must provide their own skateboard, helmet, and elbow and knee pads. No instruction is provided for campers, and they must be able to skate unassisted in various parks to enjoy this camp. Weekly excursions are held on Wednesday. Parents will need to pre-purchase meal cards or send a prepaid credit card with their child for cashless field trip locations. This will allow campers to purchase food on field trips where no outside food or cash is permitted by the location.

	<u>Fee</u>	<u>Time</u>
<b>Full Day</b>	\$325/week/child	9:00 a.m. - 4:00 p.m.
<b>Before Care</b>	\$ 20/week/child	7:00 a.m. - 9:00 a.m.
<b>After Care</b>	\$ 20/week/child	4:00 p.m. - 6:00 p.m.

# Specialty Camps - Summer

## Kool Dayz Coding Camp via CogniCoder

**Pacific Community Center**  
501 S. Pacific Ave., Glendale, CA 91204  
For information, call (818) 548-4098



This 2-week camp in partnership with CogniCoder (cognicoder.com) combines our popular Kool Dayz Summer Camp program at Pacific Community Center and adds an additional enrichment component via CogniCoder and their virtual instruction based computer coding classes. CogniCoder classes are designed and conducted by University of Southern California (USC) Computer Science Department with live instructors virtually.

Your child can enroll into the following class: <Scratch Jr.>, <Scratch>, <Web Dev>, <CyberSecurity>, <Python>, <Java>. Each class is offered in beginner, intermediate, and advanced levels.

Each 2-week session will provide 15 hours of instruction per session. During Weeks 2 and 4 (see below), campers will have two sessions in one-day to make up for the holiday closure. Instruction is in addition to Kool Dayz Summer Camp programs and activities which include arts

& crafts, recreation swim, outdoor group games and various, summer camp activities.

Lunch will be provided daily between June 21 and August 5, 2022. Lunch will not be provided during the week of August 8 through 12, 2022.

Campers are not required to provide any hardware; however, we recommend each camper bring their own personal plug-in headset with microphone.

**Dates:** Monday - Friday, June 21 - August 12, 2022  
**Time:** 7:00 a.m. - 6:00 p.m.  
**Ages:** 8 - 14 ( Child must be 8 years old by August 12, 2022)

### 2-Week Sessions

**Session 1:** June 21 - July 1 (no camp on June 20)  
**Session 2:** July 5 - 15 (no camp on July 4)  
**Session 3:** July 18 - 29  
**Session 4:** August 1 - August 12

**Fee:**  
\$328/session/child  
\$328/session/child  
\$345/session/child  
\$345/session/child

# Specialty Camps - Summer

## Maximum Potential Basketball Summer Break Camp

**Pacific Community Center**  
501 S. Pacific Ave., Glendale, CA 91204  
For information, call (818) 548-4098

Hoopapalooza is designed to help improve an individual's strength, knowledge, and overall development of basketball. Join this camp TODAY and you will be able to fulfill your aspirations. Learn the basics and advanced movements of the game. We will also cover dribbling, passing, shooting, and agility. ALL SKILL LEVELS ARE WELCOME!!!!

Mark Herring of Hoopapalooza Inc. will be the instructor. Coach Herring is a native of North Carolina and has worked with the likes of Coach Kryzewski ("Coash K", Duke University's Men's Basketball Team), Kobe Bryant, Carmelo Anthony, and other NBA Stars. COME JOIN THE FUN!!!!

### 5-Day Camp

**Dates:** Monday - Friday, July 18 - 22, 2022  
**Ages:** 8 - 16

	<u>Number</u>	<u>Fee</u>	<u>Time</u>
<b>Full Day</b>	162430-01	\$150/week/child	9:00 a.m. - 4:00 p.m.
<b>Before Care</b>	162402-06	\$20/week/child	7:00 a.m. - 9:00 a.m.
<b>After Care</b>	162403-06	\$20/week/child	4:00 p.m. - 6:00 p.m.





# Youth & Family Services



## YOUTH & FAMILY SERVICES PROGRAM

Pacific Community Center, 501 S. Pacific Ave., Glendale, CA 91204

Hours: Monday - Friday, 9:00 a.m. - 6:00 p.m.

For more information, contact John Maghaguan, (818) 937-7247 | [jmaghaguan@glendaleca.gov](mailto:jmaghaguan@glendaleca.gov).

The Youth & Family Services Program is designed to provide free information and referral services to at-risk youth and their families. The program supports the family unit by providing guidance in decision-making and by connecting individuals to supportive services in the community.

### **Eligibility for Programs:**

Youth 13 - 17 years of age and young adults 18 - 21.

No income or residency requirements.

Self-referrals and referrals from local agencies are accepted.

### **Youth Case Management:**

Information & referral, utility assistance, connecting individuals to community providers regarding a variety of social issues which include, but are not limited to: employment, community service, health & wellness, housing/unstable living situations, and legal matters.

### **Juvenile Ultimatum Service Training (J.U.S.T.):**

A service component that provides youth the opportunity to complete mandated community service hours through a balanced and restorative justice, community service learning, community protection and competency development process.

# Youth & Family Services

Instagram



## Follow us on Instagram @MyGlendaleTeens

Follow us on Instagram to find out the latest information on volunteer and job opportunities, special events, educational workshops, and places for teens to hang out!

You can also receive the latest updates on the City of Glendale by following @MyGlendaleTeens.

For more information, contact:

John Maghaguian

(818) 937-7247 | [jmaghaguian@glendaleca.gov](mailto:jmaghaguian@glendaleca.gov)

## Do You Want to Earn Community Service Hours for School and Become a Teen Volunteer?

1. Are you at least 14 years old?
2. Can you commit to 50 hours per year?
3. Do you have one of the following forms of identification?
  - ♦ California Driver License
  - ♦ California Identification Card
  - ♦ U.S. Passport
  - ♦ Military Identification Card
  - ♦ Green Card
4. Can you volunteer on weekends?

If you answered yes to all of these questions, please contact John Maghaguian at (818) 937-7247 or [jmaghaguian@glendaleca.gov](mailto:jmaghaguian@glendaleca.gov).





# Youth & Family Services



Community Services  
& Parks



YOUTH & FAMILY SERVICES PRESENTS:

## TEEN NIGHT OUT

5:00 P.M. – 9:00 P.M.

For ages 13 -18

FREE SNACKS, REFRESHMENTS & PRIZES

**HANG OUT WITH YOUTH & FAMILY SERVICES  
EVERY FRIDAY NIGHT, AND ENJOY PING PONG,  
PS 4, POOL, AND KARAOKE.**

### LOCATIONS AND DATES

**PACIFIC COMMUNITY CENTER  
501 S. PACIFIC AVE. GLENDALE, CA 91204**

**MARCH 4, 2022**

**APRIL 1, 15, 29, 2022**

**MAY 13, 2022**

**MAPLE PARK COMMUNITY CENTER  
820 E. MAPLE ST. GLENDALE, CA 91205**

**MARCH 11, 25, 2022**

**APRIL 8, 22, 2022**

**MAY 6, 20, 2022**



To register or for more information, call or email Community Services Supervisor,  
John Maghaguian, at (818) 937-7247 or [jmaghaguian@glendaleca.gov](mailto:jmaghaguian@glendaleca.gov).



Follow us @MyGlendaleTeens or #MyGlendaleTeens

Events and programs may be cancelled due to L.A. County Department of Public Health protocols. For updates, visit [www.glendaleca.gov/LG](http://www.glendaleca.gov/LG).



# Drop-In Programs

## Therapeutic Recreation

Maple Park Community Center, 820 E. Maple St., Glendale, CA 91205

For program information, please call (818) 548-3783.

### Get Fit

Get Fit is a free program designed to improve the health status of adults with intellectual disabilities by focusing on nutrition, healthy meal planning, monthly weigh-ins and measurements, stretching and conditioning. Activities are age and skill appropriate.

**Ages:** 18 and older

**Day:** Mondays

**Time:** 5:00 p.m. - 6:30 p.m.

### Club Maple

Club Maple is a free program open to adults with intellectual disabilities which provides an opportunity for individuals to experience positive, healthy, recreational, cultural, educational, and social experiences. Activities are age and skill appropriate.

**Ages:** 18 and older

**Day:** Thursdays

**Time:** 5:30 p.m. - 8:00 p.m.

### Maple Inclusive Play Day

Maple Inclusive Play Day (MIP Day) creates an opportunity for families with children of all abilities to come to the park, network with each other and allow their children to socialize, all centered around the new Shane's Inspiration all-inclusive playground. Crafts appropriate to all abilities will be available.

**Day:** Third Saturday of each month

**Dates:** March 19, 2022 | April 16, 2022 | May 21, 2022

**Time:** 11:00 a.m. - 1:00 p.m.



# Drop-In Programs

## Youth Programs

### Tot Time

Tot time is a FREE drop-in program for preschoolers (ages 5 and under) and their parents. The center provides play equipment and toys while parents provide the supervision. No registration required.

**Location:** Maple Park Community Center, 820 E. Maple St., Glendale, CA 91205

**Days:** Mondays and Wednesdays

**Time:** 10:00 a.m. - 12:00 p.m.

**For program information, please call (818) 548-3694.**

**Location:** Pacific Community Center, 501 S. Pacific Ave., Glendale, CA 91204

**Days:** Tuesdays and Thursdays

**Time:** 10:00 a.m. - 12:00 p.m.

*Pacific Park Library offers stories and crafts on Thursdays from 10:30 a.m. - 11:00 a.m.*

**For program information, please call (818) 548-4098.**

### Maple Park and Sparr Heights After School Club

The After School Clubs at Maple Park and Sparr Heights Community Centers are free and fun drop-in after school programs for children ages 8 to 17. Recreation Leaders provide general supervision and programming. Maple Park Community Center offers a recreation room with foosball, ping pong, and other gaming activities. There is a computer lab with internet and video games. There is also a full-court gymnasium which offers drop-in basketball for youth. Sparr Heights Community Center offers lots of activities within the center including Table Tennis, Wii, Karaoke, Billiards, and other gaming activities. The entire center has FREE WiFi. Our Garden Room and South Patio are excellent locations to do homework.

**Location:** Maple Park Community Center, 820 E. Maple St., Glendale, CA 91205

**Days:** Monday through Friday

**Time:** 2:00 p.m. - 5:00 p.m.

**For more information, please call (818) 548-3694.**

**Location:** Sparr Heights Community Center, 1613 Glencoe Way, Glendale, CA 91208

**Days:** Tuesdays, Wednesdays, Thursdays

**Time:** 2:00 p.m. - 5:00 p.m.

**For more information, please call (818) 548-2187.**

*A responsible adult/guardian must accompany all children under eight (8) years of age. This program is designed to provide supplemental activities for your child after school, and not to provide childcare.*



# Trails & Open Space Programs

## INTERPRETIVE HIKES AND PROGRAMS

For information or to RSVP, please click on the links below or visit [www.glendaleca.gov/trails](http://www.glendaleca.gov/trails).

**Friday Night Lecture, "Bears in Mind"**  
**Deukmejian Wilderness Park**  
**3429 Markridge Road., Glendale, CA 91214**  
**[Friday, March 4, 2022](#)**  
**6:30 p.m. - 8:30 p.m.**

Social media is filled with videos of bears in swimming pools, in garbage cans and in back yards. Are you curious why? Join us for this informative talk about California black bears. Our host for the evening will be Urban Wildlife Specialist, Dana Stangel of Teranga Ranch. This event is recommended for ages 14 and older. Space is limited. RSVP by clicking on the date above or visiting [www.glendaleca.gov/bears](http://www.glendaleca.gov/bears).

**Celebrate Spring at Riverwalk**  
**Glendale Narrows Riverwalk**  
**300 Paula Avenue, Glendale, CA 91201**  
**[Saturday, April 2, 2022](#)**  
**10:00 a.m. – 1:00 p.m.**

Come celebrate Spring at Glendale's Riverwalk open house. Enjoy fun activities for the whole family. Take a docent-led tour of one of the few places along the LA River with an unpaved bottom. Learn about the birds, animals and plants that inhabit this unique place. Meet your City departments and local civic organizations, and learn what they are doing to help create a healthier and sustainable environment for you. Please call (818) 631-6132 or email [info@glendaleparksfoundation.org](mailto:info@glendaleparksfoundation.org) for more information.

## VOLUNTEER WORKDAYS

For information or to RSVP, please click on the links below or visit [www.glendaleca.gov/trails](http://www.glendaleca.gov/trails).

**RIVERWALK WORKDAYS**  
**Glendale Narrows Riverwalk**  
**Corner of Paula Avenue and Garden Street**  
**Saturdays: [March 12, 2022](#) | [April 9, 2022](#) | [May 14, 2022](#)**  
**8:00 a.m. - 11:00 a.m.**

Join us down by the riverside as we work to remove invasive plants from the landscaped areas along the L.A. River. Participants are asked to wear sturdy shoes, protective clothing, and bring a hat. We'll provide tools, gloves, drinks and snacks. Families, individuals, clubs, and students needing community service hours are welcome. In case of rain, workdays will be cancelled. Please RSVP by clicking on the event date above.

**WILDERNESS WORKDAYS**  
**Deukmejian Wilderness Park**  
**3429 Markridge Road., Glendale, CA 91214**  
**Saturdays: [April 16, 2022](#) | [May 21, 2022](#)**  
**8:00 a.m. - 11:00 a.m.**

Help us water our bigcone spruce and live oaks, assist with trail repairs, and remove invasive species from the park. This program is perfect for students who need community service hours. Community and youth organizations are welcome. Please wear sturdy shoes, protective clothing and a hat. Drinks and snacks will be provided. In case of rain, this event will be cancelled. Please RSVP by clicking on the event date above.

**Please call (818) 548-3795 if you have any questions or need assistance.**

All Trails & Open Space programs are sponsored by the  
[Glendale Parks & Open Space Foundation](#).

To sign up for the Trails & Open Space Program newsletter, please visit [www.glendaleca.gov/trails](http://www.glendaleca.gov/trails).

**Events and programs may be cancelled due to L.A. County Department of Public Health protocols. For updates, visit [www.glendaleca.gov/LG](http://www.glendaleca.gov/LG).**



# Verdugo Skate Park Programs



Verdugo Park  
1621 Cañada Blvd.  
(south end)  
(818) 548-2786

## FRIDAY NIGHT LIGHTS

Enjoy skateboard videos, snacks, music and fun, including a chance to win prizes! Free admission for youth. *Dates and times are subject to change.*

**Dates:** March 18, 2022

**Time:** 5:30 p.m. - 8:30 p.m.



## SKATE CLASSES

- ♦ All classes are monthly, and occur on the first 4 Saturdays of the month.

### Beginning Youth Class

**Fee:** \$249 / month      **Ages:** 5+      **Day:** Saturdays      **Time:** 9:00 a.m. - 10:20 a.m.

Students will learn balance, using the skateboard for transportation, beginner tricks, safety, skate park etiquette. Helmet, Elbow Pads, Knee Pads, and Wrist guards are required to participate.

### Intermediate Youth Class

**Fee:** \$249 / month      **Ages:** 5+      **Day:** Saturdays      **Time:** 10:30 a.m. - 11:50 a.m.

Students will learn more advanced tricks and learn about skateboard style. Helmet, Elbow Pads, Knee Pads, and Wrist guards are required to participate.

### Beginning Adult Class

**Fee:** \$249 / month      **Ages:** 17+      **Day:** Saturdays      **Time:** 9:00 a.m. - 10:20 a.m.

Focusing on safety and skateboard fundamentals, this class is fantastic for beginners to learn how to ride a skateboard. Learn skateboard safety, balance, pushing, turning, and cool tricks. Helmet, Elbow Pads, Knee Pads, and Wrist guards are required to participate.

Please check our website at [www.myglendaleparks.com](http://www.myglendaleparks.com) (keyword search "skate") for more information. You can register online as classes become available.

# Verdugo Skate Park Programs

## VERDUGO SKATE PARK

Verdugo Park (south end)  
1621 Cañada Blvd.  
Glendale, CA 91208  
(818) 548-2786



## HOURS OF OPERATION:

### March 1 - May 31, 2022

Monday – Friday: 4:00 p.m. - 9:00 p.m. (for all ages)  
Saturday: 12:00 p.m. - 9:00 p.m. (for all ages)  
Sunday: 10:00 a.m. - 12:00 p.m. (14 & under\*)  
12:00 p.m. - 9:00 p.m. (for all ages)

*\*From 10:00 a.m.-12:00 p.m. on Sundays, parents may skate with their children for instructional purposes. This is at the safety discretion of skate staff.*

## FEES:

	Youth (17 & Under) & Resident Adults (18 & Over)	Non-Resident Adults (18 & Over)
Daily Entry	Free	\$ 4
Monthly Pass	N/A	\$40
Annual Pass	N/A	\$75

## FEATURES:

15,000 square foot concrete facility: 6 - 9 foot Clover Bowl with 11 foot Over-Vert section, 6 - 10 foot Kidney Pool, Street Plaza with rails and ledges, and a Snake Run that empties into a 9 foot bowl with a Loveseat.

**ALL PERSONS ENTERING THE PARK MUST WEAR A HELMET, KNEE PADS AND ELBOW PADS.**

All skaters must have a valid release of liability form on file.  
***(Youth ages 17 and under are required to have parent/guardian signature.)***

***BMX bikes, scooters or other coasting devices are NOT permitted.***

Follow us on Instagram @verdugoskatepark



# Aquatics



## CITY OF GLENDALE'S PACIFIC COMMUNITY POOL IS OPEN YEAR ROUND

### Pacific Community Pool

509 S. Pacific Ave.  
Glendale, CA 91204

**(818) 937-7433**

**[www.GlendaleAquatics.com](http://www.GlendaleAquatics.com)**



**JOIN US FOR LESSONS, SWIM TEAM, AND RECREATION & LAP SWIM!  
CHECK OUT THE NEW AQUACISE CLASS, AND AQUA FITNESS DROP-IN PROGRAM!**



**Parks  
Make  
Life  
Better!**



@MyGlendaleParks

[www.GlendaleCA.gov](http://www.GlendaleCA.gov)

Events and programs may be cancelled due to L.A. County Department of Public Health protocols. For updates, visit [www.glendaleca.gov/LG](http://www.glendaleca.gov/LG).



# Contract Class Information

## SPRING 2022 SESSION DATES

Enrollment begins: February 21, 2022

Classes begin: March 21, 2022

Last day to enroll for open classes: April 2, 2022

(Classes that do not meet the minimum number of students may be cancelled.)

**See Page 41 for Registration Information, or call (818) 548-2184.**

## CLASS LOCATIONS

### **Adult Recreation Center (ARC)**

Central Park Complex  
201 E. Colorado St.  
Glendale, CA 91205

### **Brand Studios**

1601 W. Mountain St.  
Glendale, CA 91201

### **Chevy Chase Library**

3301 E. Chevy Chase Dr.  
Glendale, CA 91206

### **Crescenta Valley High School**

2900 Community Ave.  
La Crescenta, CA 91214

### **Deukmejian Wilderness Park**

3429 Markridge Rd.  
Glendale, CA 91214

### **Dunsmore Community Building & Park**

4700 Dunsmore Ave.  
La Crescenta, CA 91214

### **Glendale Community College**

1500 N. Verdugo Rd.  
Glendale, CA 91208

### **Glendale Sports Complex**

2200 Fern Lane  
Glendale, CA 91208

### **Glorietta Park**

2801 N. Verdugo Rd.  
Glendale, CA 91208

### **Griffith Manor Community Building**

1551 Flower St.  
Glendale, CA 91201

### **Hoover High School**

651 Glenwood Rd.  
Glendale, CA 91202

### **Joe Bridges Clubhouse**

(In Glenoaks Park)  
2531 E. Glenoaks Blvd.  
Glendale, CA 91206

### **Maple Park Community Center**

820 E. Maple  
Glendale, CA 91205

### **Montrose Park**

3529 Clifton Pl.  
Glendale, CA 91208

### **Pacific Community Center & Pool**

501 - 509 S. Pacific Ave.  
Glendale, CA 91204

### **Scholl Canyon Golf & Tennis**

3800 E. Glenoaks Blvd.  
Glendale, CA 91206

### **Sparr Heights Community Center**

1613 Glencoe Way  
Glendale, CA 91208

### **Verdugo Skate Park**

1621 Cañada Blvd.  
(south end)  
Glendale, CA 91208

# Registration Information



[www.myglendaleparks.com](http://www.myglendaleparks.com)



Contact the Customer Service office at (818) 548-2184  
Monday - Friday 8:30 a.m. - 5:00 p.m.

## ONLINE REGISTRATION

Our online registration service allows you to register for activities through the internet **24 hours a day, 7 days a week**. Below you will find instructions that will help you establish a customer account, ID# and a password. Please read all the information online, especially sections regarding **residency and refunds**.

**Step 1:** Find our website: [www.myglendaleparks.com](http://www.myglendaleparks.com).

**Step 2:** Log in with your credentials. If you have never logged in before, set up an online account. Be sure to add all of your family members. If you have forgotten your login credentials, please call (818) 548-2184 or email [CSPcustomerservice@glendaleca.gov](mailto:CSPcustomerservice@glendaleca.gov).

**Step 3:** Browse activities. Click on Activity Search, and Search Activities.

**Step 4:** Select activities by clicking on the shopping cart icon.

**Step 5:** Pay for activities by clicking on shopping cart on the top right of your screen.

### REGISTRATION REFUND POLICY

- Refunds are not available online.
- Contract classes or activities not reaching minimum numbers by the first week of classes may be cancelled and fees refunded. Service fees will not be refunded, in the event of class cancellation.
- Full refund, less an administrative fee, may be given if a refund is requested prior to start of programs/classes.
- Refunds requested after start of the program/class are contingent upon City approval and will only be considered through the conclusion of second week of scheduled class or second day of camp, and will be prorated.
- No refunds offered for Aquatics programs or classes.

For more information,  
call (818) 548-2752 or (818) 548-2184.

## REGISTRATION LOCATIONS:

Register for Classes & Camps at  
any one of the following locations:

### **Civic Auditorium**

(In person, phone, and online registrations will be accepted.)  
1401 North Verdugo Rd., Glendale, 91208  
(818) 548-2752 or (818) 548-2184

[www.myglendaleparks.com](http://www.myglendaleparks.com)

### **Adult Recreation Center Central Park Complex**

201 E. Colorado St., Glendale, CA 91205  
(818) 548-3775

### **Glendale Sports Complex**

2200 Fern Lane, Glendale, CA 91208  
(818) 548-6420

### **Maple Park Community Center**

820 E. Maple St., Glendale, CA 91205  
(818) 548-3783

### **Pacific Community Center & Pool**

501-509 South Pacific Ave., Glendale, CA 91204  
(818) 548-4098; (818) 937-7433

### **Sparr Heights Community Center**

1613 Glencoe Way, Glendale, CA 91208  
(818) 548-2187

# Youth Classes

## Youth Classes

### HIP HOP FOR KIDZ

Hip Hop dance is back by popular demand! Students will become confident, and by learning 5 dance styles including: Ballet, Hip Hop, Modern, Jazz, and Freestyle. We also play fun dancing games, and dance to the hottest music of today! Sign Up Now!

**4 weeks      Fee: \$90      Instructor: Talented Arts®**

**First 4-week session: March 23-April 13, 2022**

<u>Ages</u>	<u>Number</u>	<u>Location</u>	<u>Begins</u>	<u>Day</u>	<u>Time</u>
5-10	430703-01	Brand Studios	3/23	W	5:00 p.m. - 6:00 p.m.
11-15	430704-01	Brand Studios	3/23	W	6:00 p.m. - 7:00 p.m.

**Second 4-week session: April 20-May 11, 2022**

<u>Ages</u>	<u>Number</u>	<u>Location</u>	<u>Begins</u>	<u>Day</u>	<u>Time</u>
5-10	430703-02	Brand Studios	3/23	W	5:00 p.m. - 6:00 p.m.
11-15	430704-02	Brand Studios	3/23	W	6:00 p.m. - 7:00 p.m.

### DRAWING AND PAINTING CLASS FOR ALL LEVELS



Learn drawing and painting techniques while learning about the Masters. Covering still life, landscapes, portraits, animals and compositional design. Students will use a variety of art media including acrylic Paint. Please dress for art and be ready to learn, practice and create! No class Friday, April 29, 2022.

**\$20 materials fee is payable on the first day of class.**

**10 Weeks      Fee: \$100      Instructor: Ann Marie Smith**

<u>Ages</u>	<u>Number</u>	<u>Location</u>	<u>Begins</u>	<u>Day</u>	<u>Time</u>
6 - 14	430501-04	Brand Studios	3/25	Fri	5:30 p.m. - 6:45 p.m.
6 - 14	430501-05	Brand Studios	3/21	M	5:30 p.m. - 6:45 p.m.

### PARENT AND CHILD ART

Adult and child share creative time together using paint, paper, clay and found objects. Students will learn basic art techniques and vocabulary while painting, printmaking, clay making, creating collage and fantasy crafting. The instructor encourages freedom of expression and creativity. Classes also include games, songs, sharing books, story time, and show and tell. Class may be held outdoors.

**\$10 material fee is payable on the first day of class.**

**8 weeks      Fee: \$85      Instructor: Aleka Corwin**

<u>Ages</u>	<u>Number</u>	<u>Location</u>	<u>Begins</u>	<u>Day</u>	<u>Time</u>
2 - 5	430502-01	Brand Studios	3/24	Th	11:00 a.m. - 12:00 p.m.



# Youth Classes / Youth Sports

## DRAMA MANIACS

Do you have a creative young performer in your family? Give their budding creativity a place to blossom in our fun-filled, high-energy class! Students will learn about the wild world of DRAMA, including improvisation, musical theatre, mime, student-developed scenes, public speaking, and acting skills! This class is guaranteed to be fun and accessible for all levels of ability and experience. Join us for an exciting session of activities and help your child develop their confidence, creativity, and character with Drama Maniacs!

**8 weeks**

**Fee: \$160**

**Instructor: Drama Maniacs**

<u>Ages</u>	<u>Number</u>	<u>Location</u>	<u>Begins</u>	<u>Day</u>	<u>Time</u>
5-12	480601-01	Sparr Heights CC	3/24	Th	4:30 p.m. - 5:30 p.m.

## Youth Sports

### EVOLUTION BASKETBALL

Evolution Basketball teaches the fundamental movement skills and overall motor skills for basketball. The courses are designed to teach the fundamental concepts of basketball, dribbling and passing, shot techniques, spatial awareness, and teamwork. Levels are age-appropriate, and gradually increase children's ability to help them play the sport of basketball. A jersey is included for all participants.

**LOCATION:** Verdugo Park (South End), on the Basketball Court  
1621 Cañada Blvd., Glendale, CA 91208

#### 5 WEEKS

**FEE:** \$99

**DATES:** Fridays, May 13 - June 10, 2022

<u>Number</u>	<u>Level/Ages</u>	<u>Times</u>
440805-04	Level 2 (5-7 years)	4:00 p.m. - 4:45 p.m.
440805-05	Level 3 (8-11 years)	4:45 p.m. - 5:30 p.m.
440805-06	Level 1 (4-5 years)	5:30 p.m. - 6:00 p.m.
440805-07	Level 2 (5-7 years)	6:05 p.m. - 6:50 p.m.

### MAXIMUM POTENTIAL BASKETBALL



Hoopapalooza is designed to help improve an individual's strength, knowledge, and overall development of basketball. Join this class TODAY and you will be able to fulfill your aspirations. Learn the basics and advanced movements of the game. We will also cover dribbling, passing, shooting, and agility. ALL SKILL LEVELS ARE WELCOME!!!!

Mark Herring of Hoopapalooza Inc. will be the instructor. Coach Herring is a native of North Carolina and has worked with the likes of Coach Krzyzewski ("Coach K", Duke University's Men's Basketball Team), Kobe Bryant, Carmelo Anthony, and other NBA Stars. COME JOIN THE FUN!!!!

**6 WEEKS**

**Fee: \$150**

**Instructor: Mark Herring**

<u>Ages</u>	<u>Number</u>	<u>Location</u>	<u>Begins</u>	<u>Day</u>	<u>Time</u>
8-16	460601-01	Pacific CC	3/31	Th	5:30 p.m. – 6:30 p.m.

Events and programs may be cancelled due to L.A. County Department of Public Health protocols. For updates, visit [www.glendaleca.gov/LG](http://www.glendaleca.gov/LG).

# Youth Sports

## KIDZ LOVE SOCCER

[WWW.KIDZLOVESOCCER.COM](http://WWW.KIDZLOVESOCCER.COM)



This instructional soccer experience includes age appropriate activities, skill demonstrations, fun games, and instructional scrimmages conducted in a non-competitive, recreational format. This class is perfect for first time players while being fun and engaging for kids with some experience. **Shin guards are required.**

**Excessive Heat and Rainout Hotline #: (888) 372-5803. Call this number up to 30 minutes prior to any scheduled class to verify class status.** *If a class is cancelled due to weather and/or another City program, the class will be made up at the end of the session.*

### 7 WEEKS

**FEE: \$120**

**All participants will receive a soccer jersey.**

**LOCATION:** Glorietta Park, 2801 N. Verdugo Rd., Glendale, CA 91208

**DAY/SESSION DATES:** Wednesdays, April 6 - May 18, 2022

<u>Number</u>	<u>Class Title</u>	<u>Age</u>	<u>Time</u>
441202-01	Tot/Pre-Soccer	3.5 - 5	3:30 p.m. - 4:05 p.m.
441203-01	Soccer 1	5 - 6	4:10 p.m. - 4:55 p.m.
441204-01	Soccer 2: Skillz & Scrimmages	7 - 10	4:55 p.m. - 5:40 p.m.

**LOCATION:** Glorietta Park, 2801 N. Verdugo Rd., Glendale, CA 91208

**DAY/SESSION DATES:** Saturdays, April 9 - May 21, 2022

<u>Number</u>	<u>Class Title</u>	<u>Age</u>	<u>Time</u>
441201-02	Mommy/Daddy/Me	2 - 3.5	9:00 a.m. – 9:30 a.m.
441201-03	Mommy/Daddy/Me	2 - 3.5	9:35 a.m. – 10:05 a.m.
441202-02	Tot Soccer	3.5 - 4	10:10a.m. – 10:40 a.m.
441202-03	Pre Soccer	4 - 5	10:45 a.m. – 11:20 a.m.
441203-02	Soccer 1, Technique & Teamwork	5 - 6	11:25 a.m. – 12:10 p.m.



Events and programs may be cancelled due to L.A. County Department of Public Health protocols. For updates, visit [www.glendaleca.gov/LG](http://www.glendaleca.gov/LG).

# Youth Sports

## BEGINNERS EDGE SPORTS TRAINING (BEST) CLASSES

For program information, call (818) 937-7440.

To register, call (818) 548-2184.



### BEST 4-Sport Multi-Sport

(Soccer, Baseball/Softball, Basketball, and Track & Field).

The 4-sport program brings you multiple weeks of 4 fantastic sports. We will teach your player how to kick and control a soccer ball, how to hit, catch, throw and run the bases, basketball handling, dribbling, passing and shooting, and track and field exercises. Our goal and focus is to maintain an energetic & highly active program that will teach, encourage and advance your young players, regardless of their skill level. Please bring an age-appropriate soccer ball for the first week. A hitting tee is needed later in the camp, as well as your own basketball. All other equipment will be provided.

**LOCATION:** Verdugo Park (South End), Next to the Basketball Court,  
1621 Cañada Blvd., Glendale, CA 91208

### 7 WEEKS

**FEE:** \$119

**Session 1:** 440801 Saturdays April 23 - June 11, 2022

**Session 2:** 440802 Sundays April 24 - June 12, 2022

<u>Section</u>	<u>Age</u>	<u>Time</u>
01	4 - 7	9:00 a.m. – 9:45 a.m.
02	2 - 4	9:50 a.m. – 10:35 a.m.
03	7 - 10	10:40 a.m. – 11:25 a.m.

### **FUTURE YOUTH SPORTS CLASSES COMING SOON!**

We are returning to normal, and sports classes will be added regularly! Please call (818) 937-7440 to ask about upcoming classes, or visit [www.myglendaleparks.com](http://www.myglendaleparks.com) to see a list of classes. You can search by keyword “sports” to see all youth sports classes available.

Future classes in the works include tennis, basketball, volleyball and lacrosse! Check our website regularly to see a description and dates/times classes will be offered this fall.



# Adult Classes

## Adult Fitness/Wellness & Dance

### AIKIDO

Aikido is a peaceful, yet powerful Japanese martial art. This class is designed to teach students how to use an opponent's energy to gain control of a situation using beautiful and circular techniques. Great emphasis is placed on motion and the dynamics of movement.

<b>10 Weeks</b>	<b>Fee: \$100</b>	<b>Instructor: Mark Adachi</b>		
<b><u>Number</u></b>	<b><u>Location</u></b>	<b><u>Begins</u></b>	<b><u>Day</u></b>	<b><u>Time</u></b>
460401-01	Pacific CC	4/4	M, Th Sat	7:00 p.m. - 8:30 p.m. 10:00 a.m. - 11:30 a.m.

### HATHA YOGA

Enjoy an Integrated approach to Yoga combining the aspects of Alignment, Repetitive Movement coordinated with breath, to maintain and enhance good health. The class starts with a breathing meditation, followed by seated classical yoga positions, kneeling and standing positions. Class will end with a guided deep relaxation.

<b>8 Weeks</b>	<b>Fee: \$80</b>	<b>Instructor: Susan Quon</b>		
<b><u>Number</u></b>	<b><u>Location</u></b>	<b><u>Begins</u></b>	<b><u>Day</u></b>	<b><u>Time</u></b>
430302-01	Brand Studios	3/22	T	6:30 p.m. - 8:00 p.m.
430302-03	Brand Studios	3/23	W	10:30 a.m. - 12:00 p.m.

### YOGA with Knekoh Fruge, C-IAYT, E-RYT & Yoga Circle Downton

Postures (Asanas) stretch, tone and strengthen the entire skeletal system, working not only the body's frame, but the internal organs, glands and nerves as well. These postures are linked via a connective movement (Vinyasa) and powerful breath work. These breathing exercises (pranayama) refresh and cleanse the body and help to control the mind. The union (yoga) of these two forces (Asana and Pranayama), release physical and mental tension, liberating vast resources of energy with increased mental power, clarity and concentration. This practice, over time, will bring your being into peak physical and mental condition.

<b>10 Weeks</b>	<b>Fee: \$150</b>	<b>Instructor: Knekoh Fruge</b>		
<b><u>Number</u></b>	<b><u>Location</u></b>	<b><u>Begins</u></b>	<b><u>Day</u></b>	<b><u>Time</u></b>
430303-01	Chevy Chase Library	3/26	Sat	9:00 a.m. - 10:00 a.m.



# Adult Classes

## Adult Visual Arts

### WATERCOLOR FRESH AND LOOSE

In this class, painters will explore breaking free of careful, timid techniques to create stronger, more effective visual statements. The emphasis will be toward fostering individual progress and developing each artist's unique voice.

Participants of every skill or experience level are welcome. No class on Friday, April 29, 2022!

**10 Weeks      Fee: \$90      Instructor: John Byram**

<u>Number</u>	<u>Location</u>	<u>Begins</u>	<u>Day</u>	<u>Time</u>
430102-01	Brand Studios	3/25	F	9:00 a.m. - 12:00 p.m.
430102-02	Brand Studios	3/25	F	1:00 p.m. - 4:00 p.m.



### MIXED MEDIA (Open Studio)

This open studio class will allow participants to develop new visions and explore new methods by using water mediums such as gesso ink, acrylic, and pastels. There is no instructor for this class, and students can share experience and tips with each other.

**8 Weeks      Fee: \$65      No Instructor**

<u>Number</u>	<u>Location</u>	<u>Begins</u>	<u>Day</u>	<u>Time</u>
430103-01	Brand Studios	3/21	M	10:00 a.m. - 1:00 p.m.



# Adult Sports

## Adult Sports

For program information, call (818) 937-7440.  
To register, call (818) 548-2184.

### ADULT TENNIS CLASSES

The classes will include stroke development, drills, and singles and doubles strategy. Students should bring water, a tennis racket, and a \$5 equipment fee, cash only. Please bring exact change.

**8 WEEKS**                      **FEE:** \$100                      **AGES:** 18+

**Session Dates:**      Tuesdays, April 5 - May 24, 2022  
                                    Thursdays, April 7 - May 26, 2022

**Location:**                      Montrose Park, 3529 Clifton Pl., Glendale, CA 91208

#### SKILL LEVEL: BEGINNING

<u>Number</u>	<u>Day of Week</u>	<u>Location</u>	<u>Time</u>
341001-02	Tuesdays	Montrose Park	9:00 a.m. - 10:00 a.m.
341001-04	Thursdays	Montrose Park	9:00 a.m. - 10:00 a.m.

#### SKILL LEVEL: INTERMEDIATE

<u>Number</u>	<u>Day of Week</u>	<u>Location</u>	<u>Time</u>
341002-05	Tuesdays	Montrose Park	10:00 a.m. - 11:00 a.m.
341002-03	Thursdays	Montrose Park	10:00 a.m. - 11:00 a.m.



### FUTURE ADULT SPORTS CLASSES COMING SOON!

We are returning to normal, and sports classes and programs will be added regularly! Please call (818) 937-7440 to ask about upcoming classes, or visit [www.myglendaleparks.com](http://www.myglendaleparks.com) to see a list of classes. You can search by keyword "sports" to see all sports classes available.

Future classes in the works include tennis, volleyball, basketball leagues, and badminton! Check our website regularly to see a description and dates/times classes will be offered this fall.

### Activity Card Fee Schedule:

Senior Activity Cards (60 years of age and older)	<b>\$10/year</b>
Adult Activity Cards (18 - 59 years old)	<b>\$25/year</b>

Cards may be purchased at one of the following locations:

- **Adult Recreation Center**, 201 E. Colorado St., Glendale, CA 91204
- **Glendale Sports Complex**, 2200 Fern Lane, Glendale, CA 91208
- **Maple Park Community Center**, 820 E. Maple St., Glendale, CA 91205
- **Pacific Community Center**, 501 S. Pacific Ave., Glendale, CA 91204
- **Sparr Heights Community Center**, 1613 Glencoe Way, Glendale, CA 91208



# Adult Sports

## ADULT OPEN PLAY BADMINTON

Join a sport that gives you a great aerobic workout! All skill levels are invited to participate!



- Location:** Pacific Community Center Gym  
501 S. Pacific Ave., Glendale, CA 91204
- Fee:** Free for Activity Card Holders (see fee schedule on page 41)  
\$2 for Non-Activity Card Holders
- Days/Times:** Fridays, 6:00 p.m. - 10:00 p.m.  
Call the facility to check for closures: (818) 548-4098.

## ADULT DROP-IN BASKETBALL

Open play basketball is available to adults of all skill levels in our gyms at Maple Park Community Center and Pacific Community Center. All skill levels are welcome to drop-in for a good workout by playing pickup games. **Ask for the drop-in calendar from the front desk to know when drop-in goes dark due to facility reservations and special events. Drop-in calendar is subject to change without notice. Please contact the Community Center for an up-to-date schedule.**

- Fee:** Free for Activity Card Holders (see fee schedule on page 48)  
\$2 for Non-Activity Card Holders
- Location:** Maple Park Community Center  
820 E. Maple St. Glendale, CA 91205
- Days/Times:** Monday through Friday 4:00 p.m. - 5:00 p.m.  
Saturday 9:00 a.m. - 5:00 p.m.
- Location:** Pacific Community Center  
501 S. Pacific Ave. Glendale, CA 91204
- Days/Times:** Monday and Thursday 5:00 p.m. - 8:00 p.m.  
Saturday 12:00 p.m. - 4:00 p.m.



## ADULT OPEN PLAY VOLLEYBALL



- Location:** Maple Park Community Center\*  
820 E. Maple St., Glendale, CA 91205
- Fee:** Free for Activity Card Holders (see fee schedule on page 48)  
\$2 for Non-Activity Card Holders
- Days/Times:** Tuesdays, 6:00 p.m. - 9:00 p.m.  
(Ask for the drop-in calendar at the front desk to know when drop-in goes dark due to private reservations or special event.)

\*Release of liability form is due each calendar year. Maximum 42 person capacity per night. Teams will be established in groups of 6 based on the sign-in sheet.

# Adult Sports

## MASTERS OPEN PLAY SOCCER (Ages 40+)

Get a healthy workout and meet new friends as you join other adult enthusiasts for casual pick-up games. This is a non-competitive, friendly play program. Pick-up games are available on Wednesday and Friday mornings.

**Fee:** Activity Card holders only. \$2 per player per day  
(see fee schedule on page 48)

**Days/Time:** Wednesdays and Fridays, 7:30 a.m. - 9:30 a.m.

**Location:** Glendale Sports Complex  
2200 Fern Lane, Glendale, CA 91208

## MASTERS OPEN PLAY SOCCER (Ages 60+)

On Tuesdays and Thursdays, the City offers causal pick-up soccer for adults over age 60 in both a walking and running format. Walking soccer is designed to get seniors on the field to stay physically active, but without the intensity of a regular game. The programs will be offered at different times to allow for safe and enjoyable games for both intensities.

**Fee:** Activity Card holders only. \$2 per player per day  
(see fee schedule on page 48)

<b>Day/Time:</b>	Tuesdays and Thursdays,	Walking Soccer	10:00 a.m. - 11:00 a.m.
		Masters Soccer	11:00 a.m. - 1:00 p.m.

**Location:** Glendale Sports Complex  
2200 Fern Lane, Glendale, CA 91208



Events and programs may be cancelled due to L.A. County Department of Public Health protocols. For updates, visit [www.glendaleca.gov/LG](http://www.glendaleca.gov/LG).

# GCC Senior Classes



## SENIOR CLASSES

### Sponsored by Glendale Community College

The City of Glendale, in partnership with Glendale Community College, is sponsoring several classes for seniors, ages 60+, FREE of charge.

For information or class registration, please call (818) 243-5196.

**Spring Session Dates:  
February 22, 2022 - June 15, 2022**

Please visit [www.garfield.glendale.edu](http://www.garfield.glendale.edu) for a listing of all credit/no credit classes available through Glendale Community College Garfield Campus.



Events and programs may be cancelled due to L.A. County Department of Public Health protocols. For updates, visit [www.glendaleca.gov/LG](http://www.glendaleca.gov/LG).



# Senior Classes & Activities

**ALL CLASSES ARE ONGOING, YOU MAY REGISTER AT ANY TIME.**

The classes listed below will be offered in-person AND online. You are welcome to join us in either format.

If you wish to participate online via Zoom, please email [cspcares@glendaleca.gov](mailto:cspcares@glendaleca.gov). We will send you a meeting invitation, meeting ID and password.

In-person classes must follow all LA County Health Department protocols.

## Locations:

Mondays, Wednesdays, and Fridays – Pacific Community Center, 501 S. Pacific Ave. Glendale, CA 91204  
Tuesdays and Thursdays – Sparr Heights Community Center, 1613 Glencoe Way, Glendale, CA 91208

**Fee Schedule:**      **\$1 per class, payable at the beginning of each class. Activity card holders only. (Card must be presented upon payment.)**

## Activity Card Fee:

Senior Activity Cards (60 years of age and older)	\$10/year
Adult Activity Cards (18 - 59 years old)	\$25/year
Single-Day Pass	\$2/day

***For ALL Classes Listed Below:***

***Zoom Meeting ID: 894 7893 4835 | Passcode: PMLB2022***

Day	Class	Time	Location
Mondays	Aerobics	9:00 a.m. - 10:00 a.m.	Pacific CC
	Slow Stretch	10:00 a.m. - 11:00 a.m.	Pacific CC
	Absolute Beginner Line Dancing	11:15 a.m. - 12:15 p.m.	Pacific CC
	Beginner/Improver Line Dancing*	12:30 p.m. - 2:30 p.m.	Pacific CC
Tuesdays	Zumba	9:00 a.m. - 10:00 a.m.	Sparr Heights CC
	Muscle Toning	10:00 a.m. - 11:00 a.m.	Sparr Heights CC
Wednesdays	Zumba	9:00 a.m. - 10:00 a.m.	Pacific CC
Thursdays	Aerobics	9:00 a.m. - 10:00 a.m.	Sparr Heights CC
	Slow Stretch	10:00 a.m. - 11:00 a.m.	Sparr Heights CC
Fridays	Zumba	9:00 a.m. - 10:00 a.m.	Pacific CC
	Muscle Toning	10:00 a.m. - 11:00 a.m.	Pacific CC

\* Activity Card Holders \$2 per class, payable at the beginning of each class.

Non-Activity Card Holders \$4 per class, payable at the beginning of each class.

Events and programs may be cancelled due to L.A. County Department of Public Health protocols. For updates, visit [www.glendaleca.gov/LG](http://www.glendaleca.gov/LG).

# Senior Classes & Activities

## Adult Recreation Center

### ADULT RECREATION CENTER

201 E. Colorado St., Glendale, CA 91205  
For more information, call (818) 548-3775.

**AVAILABLE TO ACTIVITY CARD HOLDERS ONLY.**

### EXERCISE ROOM

The Adult Recreation Center offers a wide selection of fitness equipment including treadmills, cross-trainers, and stationary bikes along with numerous multifunction machines. Proper workout clothes and a towel are required.

**An additional ARC Gym Membership is required.**

#### Fee Schedule:

Senior Activity Cards (60 years of age and older)	\$10/year
Adult Activity Cards (18 - 59 years old)	\$25/year
Senior ARC Gym Membership	\$50/year plus an Activity Card
Adult ARC Gym Membership	\$80/year plus an Activity Card

#### Exercise Room Hours

Monday - Thursday	8:00 a.m. - 7:30 p.m.
Fridays & Saturdays	8:00 a.m. - 4:30 p.m.
Sundays	Closed



# Senior Classes & Activities

## Adult Recreation Center

### ADULT RECREATION CENTER

ALL OF THE FOLLOWING ACTIVITIES ARE AVAILABLE TO ACTIVITY CARD HOLDERS ONLY.  
For more information, please call (818) 548-3775.

#### ARC BRIDGE CLUB



Millions of people play bridge worldwide. Bridge is a trick-taking game using a standard deck played by four players.

**Days/Time:** Tuesdays, Thursdays, Saturdays 11:30 a.m. - 4:30 p.m.

**Location:** Activity Room and/or Multi-Purpose Room B

#### DROP-IN BILLIARDS, BACKGAMMON, CHESS, AND DOMINOS



You can drop in Monday through Saturday to play some billiards, backgammon, chess or dominos. **Hours may change based on room availability.**

**Days/Time:** Mondays – Thursdays 8:00 a.m. - 7:30 p.m.

Fridays and Saturdays 8:00 a.m. - 4:30 p.m.

**Location:** Multi-Purpose Room A

#### BINGO



Make new friends while playing this timeless classic.

**Activity Card Holders: \$1 for 2 cards; Non Activity Card Holders: \$2 for 2 cards.**

**Days/Time:** Fridays 10:00 a.m. - 11:00 a.m.

**Location:** Multi-Purpose Room A

#### KNIT & CHAT



Bring your yarn and needles to knit and chat with your friends about various topics. Show off your skills, and teach each other new methods!

**Days/Time:** Tuesdays & Fridays 9:00 a.m. - 10:00 a.m.

**Location:** Activity Room



# Senior Classes & Activities

## Pacific Community Center

### PACIFIC COMMUNITY CENTER

501 S. Pacific Ave, Glendale 91204, Glendale, CA 91204

For more information, call (818) 548-4098.

#### Activity Card Fee:

Senior Activity Cards (60 years of age and older)	\$10/year
Adult Activity Cards (18 - 59 years old)	\$25/year
Single Day Pass	\$ 2 /day

### DROP-IN BILLIARDS

You can drop in Monday through Saturday to play some billiards. **Hours may change based on room availability.**

**Days/Time:** Mondays – Thursdays, 9:00 a.m. - 8:30 p.m.  
Fridays and Saturdays, 9:00 a.m. - 4:30 p.m.

**Location:** Recreation Room

### CONTEMPORARY WORLD ISSUES

Join your peers every Tuesday to discuss various current affairs at the local, state, and national level as well as news and events that take place abroad. The weekly meet-up is an opportunity to ask questions, express your thoughts and opinions about topics, and see what others think.

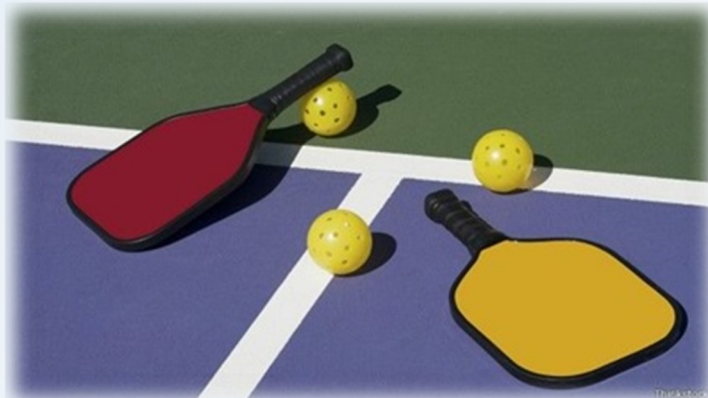
**Days/Time:** Tuesdays, 10:00 a.m. - 12:00 p.m.

**Location:** Recreation Room

### PICKLEBALL

Come out and try this fun sport, make some friends and see what everyone is talking about.

- ◇ All Levels and Ages Welcome
- ◇ Coaching Available for Beginners
- ◇ Paddles Available



#### 3 Outdoor Courts

Monday - Friday 9:00 a.m. - 12:00 p.m.

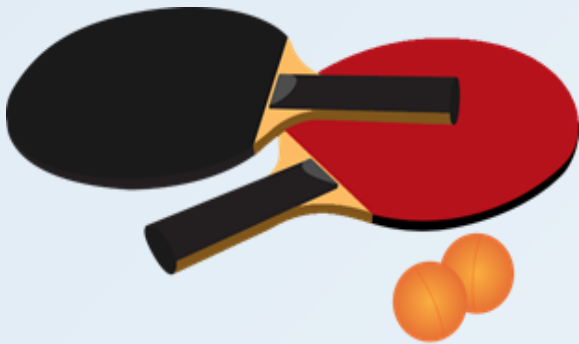
#### 4 Indoor Courts

Tuesdays 5:30 p.m. - 8:00 p.m.

# Senior Classes & Activities

## Pacific Community Center

### OPEN PLAY TABLE TENNIS



No matter what your skill level or how long it has been since you held a paddle, the time has come to play some ping pong. Make new friends and get a work out while having fun.

**Days/Time:**

Tuesdays and Wednesdays, 2:30 p.m. - 5:30 p.m.

Saturdays, 12:30 p.m. - 4:00 p.m.

**Fee:** See Activity Card Fee schedule on previous page.

### SENIOR MIXER

*Due to COVID-19, the senior mixer has temporarily relocated from the Adult Recreation Center to Pacific Community Center. This program will return to the Adult Recreation Center when the Dining Hall at the Adult Recreation Center is available for programming use.*



If you like to salsa, cha-cha, rumba, waltz or boogie, this is the place to be. The senior mixer is a great opportunity to socialize with fellow seniors in the greater community of Glendale, make new acquaintances and enjoy a good time. Please call the Adult Recreation Center for a list of specific activities that take place during the mixer.

**Days/Time:** Fridays, 2:30 p.m. - 5:00 p.m.

**Dates:** March 4 & 18 | April 1, 15, & 29 | May 13 & 27 | June 10 & 24, 2022

**Location:** Pacific Community Center, Gym A

\* A suggested donation of \$2.00 is collected at the entrance to the mixer. This is a gratuity that is given to the DJ at the end of each event.

**Participants must follow all LA County Health Department protocols.**

# Senior Classes & Activities

## Sparr Heights Community Center

### SPARR HEIGHTS COMMUNITY CENTER

1613 Glencoe Way, Glendale, CA 91208  
For more information, call (818) 548-2187.

**ALL OF THE FOLLOWING ACTIVITIES ARE AVAILABLE TO ACTIVITY CARD HOLDERS ONLY.  
NO ADDITIONAL FEE.**

#### WOODCARVING CLASS

Bring your favorite tools, create a work of art, and enjoy the companionship of like-minded folks.

**Day/Time:** Thursdays 10:00 a.m. - 11:00 a.m.

#### BRIDGE

Senior bridge players of all skill levels and experience can come to the center and participate in competitive bridge games.

**Day/Time:** Mondays 9:00 a.m. - 11:30 a.m.

#### BINGO

If you were born to yell, "BINGO!", come out and enjoy an exciting game of senior bingo for prizes and socialization.

**Day/Time:** Wednesdays 12:30 p.m. - 1:30 p.m.





## Senior Services

# Are You A Senior Who Needs Nutrition Assistance?



### Criteria

***Seniors 60 years or older residing in Los Angeles County are eligible for the Elderly Nutrition Program.***

### **2 OPTIONS AVAILABLE FOR ELIGIBLE SENIORS:**

#### **Option One:** Frozen Meals Pick Up or Delivery

7 days a week of frozen meals available for seniors who have means to store and warm up the frozen meals.

Delivered by City Staff on designated days of the week or  
Pick up by senior or his/her designee on assigned days.

#### **Option Two:** Brown Bag Pick-Up

7 days a week

Available for seniors who don't have the means to store/warm up the frozen meals.

Brown Bag meal options available to those without the means to warm up frozen meals at:

ADULT RECREATION CENTER, 201 East Colorado St, Glendale, CA 91205  
Monday-Friday ONLY - 11:30 a.m.-12:30 p.m. on the East side of the building at Louise St. entrance.

SPARR HEIGHTS COMMUNITY CENTER, 1613 Glencoe Way, Glendale, CA 91208  
Monday-Friday ONLY - 11:30 a.m.-12:30 p.m. at Paloma Ave. entrance.

\*New Clients must fill out Universal Intake Form before receiving meals.

\*Availability is based on supply.

For information and inquires related to the Elderly Nutrition Program, please call (818) 548-3775  
or visit us at [www.glendaleca.gov/seniors](http://www.glendaleca.gov/seniors)

Events and programs may be cancelled due to L.A. County Department of Public Health protocols. For updates, visit [www.glendaleca.gov/LG](http://www.glendaleca.gov/LG).

# Senior Services



## CASE MANAGEMENT

The Case Management program for seniors is designed to meet the special needs of frail individuals who maybe experiencing difficulty in maintaining independent living arrangements.

**For Information & Referral Services, please call:** (818) 548-3772  
**Spanish Language Case Manager:** (818) 548-2801

## Transportation Services and Bus Pass Sales:

Transportation services include Dial-A-Ride, by reservation, and MTA bus passes, sold at the Adult Recreation Center, Sparr Heights Community Center and Pacific Community Center all month long.

**The Metro bus pass for seniors is not honored by the Beeline.**

For more information about the Access Paratransit Program for disabled seniors, call (818) 548-3775 or (818) 548-2187.

## Health Insurance Counseling and Advocacy Program (HICAP):

The state-registered Health Insurance Counseling and Advocacy Program (HICAP) Volunteer Counselors provide unbiased information, counseling and assistance on Medicare and related health care coverage, including:

- ◆ Original Medicare (Parts A & B)
- ◆ Medicare Prevention Services
- ◆ Medicare Part D (Prescription Drug Benefit)
- ◆ "Extra Help" with Medicare Part D
- ◆ Medicare Advantage: HMO'S & PPO
- ◆ Medicare Supplement (Medigap) Insurance
- ◆ Medi-Cal & Medicare Savings Programs
- ◆ Long-Term Care

Contact the Adult Recreation Center at (818) 548-3775 for more information.

## Legal Aid - Provided by the Armenian Bar Association:

Assistance with legal questions and legal documents.

<b>Office Hours:</b>	Tuesdays & Thursdays	1:00 p.m. - 5:00 p.m.
	Wednesdays	9:00 a.m. - 2:00 p.m.
	Saturdays	10:00 a.m. - 12:00 p.m.

Walk-Ins welcome, or an appointment can be made at (818) 937-3151 or at [ProBono@ArmenianBar.org](mailto:ProBono@ArmenianBar.org).



# Filming in Parks & Community Buildings

## Film Permits Process

Looking for a great place to host your next filming project? The City of Glendale Community Services & Parks Department welcomes filming in parks and community buildings! Our parks and locations can accommodate: Feature Films, Commercials, Music Videos, Public Service Announcements, Still Photo Shoots, Reality TV Series, Documentaries, Director's Reels, Student Films.

### Film Permits Include:

- Reserved site
- Professional Site Host onsite to ensure film crew has access to reserved site
- Well-maintained locations that are clean and ready for set dressing if applicable

### Previous Film Projects Include:

- Criminal Minds TV Series
- Adidas Commercial
- The Bachelorette TV Series
- Pedigree Commercial
- Battlefield America
- MTV's Parental Control
- Various other projects

### Requesting a Film Permit

**Contact Norma Mower: (818) 548-3813**

**Email: [nmower@glendaleca.gov](mailto:nmower@glendaleca.gov)**

1. Verify park/facility availability.
2. Obtain a Film Permit Application. Film permit application can be downloaded from [www.glendaleca.gov/businesses/filming-in-glendale](http://www.glendaleca.gov/businesses/filming-in-glendale)
3. Complete a Film Permit Application with Community Services & Parks.
4. Complete a Film Permit Application with Management Services.
5. A site meeting may be scheduled in conjunction with the Facility Permit Application.
6. Make payment in full to Community Services & Parks.
7. Obtain an approved Facility Permit.



Events and programs may be cancelled due to L.A. County Department of Public Health protocols. For updates, visit [www.glendaleca.gov/LG](http://www.glendaleca.gov/LG).



# Tours of Historic Facilities

FOR RESERVATIONS, PLEASE CALL  
COMMUNITY SERVICES & PARKS AT (818) 548-2184  
FOR TOUR INFORMATION, PLEASE CALL THE DOCENTS  
AT THE VARIOUS SITES

## "Shoseian" Whispering Pine Teahouse & Friendship Garden



Inside Brand Park  
1601 West Mountain Street Glendale, CA 91201  
(310) 849-5432

### HOURS OF OPERATION

**Friendship Garden:** Mon - Thur, 10:00 a.m. - 3:00 p.m.

**Teahouse Events/Programs:** Third Sunday of the month.

Go to [www.glendaleteahouse.org](http://www.glendaleteahouse.org) for event details.

**Docent:** Friends of Shoseian

### FACILITY DESCRIPTION

- The traditional teahouse was built in 1974 through the combined efforts of the Sister Cities of Glendale and Higashi-Osaka, Japan. It is one of the few traditional Japanese Teahouses open to the public in the United States.
- The Teahouse, which was designed by architect Hayahiko Takase, is a unique blending of western and eastern design and an apt expression of the spirit of cross-cultural community.
- Nestled at the foot of the Verdugo Mountains beside a koi pond in a charming Japanese-style garden setting, the Teahouse is in a unique position to outreach to the community of Glendale and greater Los Angeles.

### HISTORY

- The Teahouse represents the spirit of goodwill, lasting peace and friendship between the people of Japan and the United States.
- Given the name "Shoseian" or "Whispering Pine Teahouse" by Genshitsu Sen, the Fifteenth Grand Tea Master of the Urasenke School of Tea in Japan, the Teahouse is designated an official Tearoom. Dr. Yamazaki of Higashi-Osaka provided initial support for the Teahouse and Gardens.
- Through recent cooperative efforts by the City of Glendale and Friends of Shoseian, the Teahouse was refurbished and designated as Glendale Register of Historic Resources #46.

## Doctors House Museum & Gazebo

Inside Brand Park  
1601 West Mountain Street Glendale, CA 91201  
(818) 242-7447

### HOURS OF OPERATION

**Guided Tours:** Sundays 2:00 p.m. - 4:00 p.m.

Beginning May 15, 2022 (No tours in July 2022, on holidays, and during inclement weather.)

**Docent:** The Glendale Historical Society

**Suggested Donation:** \$5

### FACILITY DESCRIPTION

- The Doctors House Museum is an authentically restored Queen Anne-Eastlake style home built around 1888.
- The Doctors House lawn area and gazebo are available for reservation for weddings and other special events.
- Smoking, barbecues, and amplified sound are NOT permitted because of the historic nature of the facility.

### HISTORY

- The two-story house originally stood at 921 East Wilson Avenue in Central Glendale, but was moved to its present location in 1980.
- Four early doctors owned it in succession, giving the house its name. It was later occupied by silent screen icon Nell Shipman and her family in the early 1900s.
- Threatened with demolition in 1979, community activists organized to save it and formally incorporated The Glendale Historical Society on October 24, 1979.
- The Glendale Historical Society dedicated the Doctors House to the City of Glendale on September 12, 1982, after spending thousands of volunteer hours on restoration.
- The Doctors House is registered as Glendale Register of Historic Resources #6.



Events and programs may be cancelled due to L.A. County Department of Public Health protocols. For updates, visit [www.glendaleca.gov/LG](http://www.glendaleca.gov/LG).

# Tours of Historic Facilities

## Casa Adobe de San Rafael & Park



1330 Dorothy Drive, Glendale, CA 91202  
glendalebeautiful@gmail.com  
(818) 396-6840

### HOURS OF OPERATION

Daily 8:00 a.m. – Dusk

#### Guided Tours:

Sept- June: First Sunday of the Month, 1:00 p.m. - 3:00 p.m.

July & August: Every Sunday, 1:00 p.m. - 3:00 p.m.

**Suggested Donation:** \$2

**Docent:** Glendale Beautiful

### FACILITY DESCRIPTION

- The park is 1.6 acres in size.
- Amenities include a picnic pavilion which is available for small company or family picnics or gatherings, a turf area that is available for larger festival-type events, gas grill, sink, electrical outlets, and public restroom facilities.
- Smoking, barbecues, and amplified sound are NOT permitted because of the historic nature of the facility

### HISTORY

- Casa Adobe de San Rafael is registered as California Landmark #235 and Glendale Register of Historic Resources #3.
- The Casa was built around 1870 by Tomas Sanchez, former sheriff of Los Angeles County, using adobe blocks to form the walls, which were then covered with stucco.
- In 1875, the property was sold, left abandoned, and fell into a ruinous state.
- In 1930 the Casa was purchased by the California Medicinal Wine Company who planned to tear down the structure and remove the large eucalyptus trees on the property. Local neighbors and community members stopped the demolition and began a campaign to preserve the house as a historic landmark.
- The City of Glendale purchased the adobe in 1930 and by 1932 La Casa de Adobe de San Rafael was completely refurbished.
- Today, the adobe includes a Monterey-style corridor (covered porch), beautiful sunken garden, brick patio, sandy brown tile roof, and long narrow front windows adorned with teal shutters. Interior furnishings are from the nineteenth century.

## Catalina Verdugo Adobe

2211 Bonita Drive Glendale, CA 91208

(747) 228-2688

[www.glendalebeautiful.org](http://www.glendalebeautiful.org)

### HOURS OF OPERATION

Daily 8:00 a.m.- Dusk

**Guided Tours:** Scheduled Tours Only - Please call to schedule

**Docent:** Days of the Verdugos Heritage Association

### FACILITY DESCRIPTION

- The park is 1.3 acres in size and is nestled at the base of the Verdugo Mountains in a residential neighborhood.
- Amenities include a walking trail, a garden, and a shaded picnic area with wooden tables, benches, and electric outlets.
- Smoking, barbecues, and amplified sound are NOT permitted because of the historic nature of the facility.

### HISTORY

- The Catalina Verdugo Adobe is registered as California Historical Landmark #637 and Glendale Register of Historic Resources #1.
- The Adobe is the oldest structure in the City of Glendale. As with many early structures, the construction date of the Verdugo Adobe is uncertain. It is said the Adobe was built in 1828, but some research suggests that it dates to 1860. It was the home of Catalina Verdugo who, with her brother Julio, owned much of today's Northeast Glendale. Their father, Don Jose Maria Verdugo, was the original recipient of Rancho San Rafael, the Spanish land grant that encompassed large portions of Glendale, Burbank, and Eagle Rock.
- The grounds contain the remnants of the "Oak of Peace," under which a meeting was held in 1847 that led, a few days later, to the signing of the peace treaty, Treaty of Cahuenga, that ended the Mexican-American War.
- The Adobe originally consisted of the main room and the south wing. The north wing was added in the early 1900s, after it was sold to land developer F.P. Newport.
- In 1946, the property was sold to Dr. Ernest Bashor, and his family remained there until it was sold to the City of Glendale in 1989. It is fortunate that the historic value of the original house remained preserved.





# Historic Buildings in Glendale Parks



## Le Mesnager Barn at Deukmejian Wilderness Park

3429 Markridge Road  
Glendale, CA 91214

Deukmejian Wilderness Park occupies a rugged 709 acre site in the foothills of the San Gabriel Mountains at the northernmost extremity of the City of Glendale. Trails on the site provide spectacular views of the Crescenta Valley and the Los Angeles basin.

Join us for the grand opening of the Stone Barn Nature Center on March 19, 2022, from 11:00 a.m. - 1:00 p.m.

**For information, call (818) 937-7428.**

## Rockhaven Sanitarium

2713 Honolulu Avenue  
Glendale, CA 91020

Rockhaven is a rare surviving example of the sanitariums that once flourished in the Crescenta Valley. First opened in 1923 by Agnes Richard as a “home for the feeble-minded women,” and later known as the “Screen Actor’s Sanitarium,” Rockhaven housed several Hollywood celebrities, such as Billie Burke, Flo Zigfield, Clark Gable’s first wife, as well as Marilyn Monroe’s mother. Over time, Agnes Richards purchased several neighboring Craftsman- style houses, and in the late 1920s and 1930s built several Spanish Colonial Revival style buildings which were designed specifically for the purpose of medical care and patient accommodations, expanding the facility to an approximately 3.5 acre site.

The character of this property was as much defined by its landscape as it was by its buildings. The buildings were, and still are, connected by meandering landscaped pathways, intimate gardens, patios, courtyards and expansive perimeter gardens to create a home-like setting for the individual care of the patients. In 1966, Rockhaven was awarded for its landscaping by Los Angeles Beautiful, Incorporated.

The City purchased the property in 2008 from Ararat Home, who had purchased the property in 2001 to operate a convalescent facility. The facility remains closed to the public at this time due to safety concerns.

You can read more about the facility by visiting the City’s website, [www.glendaleca.gov](http://www.glendaleca.gov), and searching Rockhaven in the search bar.





# Facility Reservations

## Adult Recreation Center

201 E. Colorado St.  
Glendale, CA 91205  
(818) 548-3775

### Steps To Rent:

1. Choose the event type, date & time.
2. Complete the Community Center Reservation Request Form and submit to the Center.
3. After completing the form, staff will contact you regarding availability and fees.
4. Upon agreement, make arrangements with the Facility Supervisor to finalize all permit requirements.

### Indoor Spaces:

- Dining Hall, maximum capacity: 240
- Multi-Purpose Room, maximum capacity: 80
- Activity Room, maximum capacity: 15
- Full service kitchen available. *Must be reserved in conjunction with a room reservation. You must bring your own kitchen equipment including pots, pans, utensils, storage ware, etc.*

### Outdoor Spaces:

- Upper Courtyard, maximum capacity: 24
- Lower Courtyard, maximum capacity: 56



# Facility Reservations

## Maple Park Community Center

820 E. Maple St.  
Glendale, CA 91205  
(818) 548-3783 or (818) 548-3694

### Steps To Rent:

1. Choose the event type, date & time.
2. Complete the Community Center Reservation Request Form and submit to the Center.
3. After completing the form, staff will contact you regarding availability and fees.
4. Upon agreement, make arrangements with the Facility Supervisor to finalize all permit requirements.

### Indoor Spaces:

- Meeting Room 101, maximum capacity: 60
- Meeting Room 102, maximum capacity: 75
- Gymnasium, maximum capacity: 200
- Two Kitchenettes equipped with warming oven, microwave, and sink. *Must be reserved in conjunction with a room reservation. You must bring your own kitchen equipment including pots, pans, utensils, storage ware, etc.*

### Outdoor Spaces:

- Terrace, maximum capacity: 20





# Facility Reservations

## Pacific Park and Community Center

501 S. Pacific Ave.  
Glendale, CA 91204  
(818) 548-4098

### Steps To Rent:

1. Choose the event type, date & time.
2. Complete the Community Center Reservation Request Form and submit to the Center.
3. After completing the form, staff will contact you regarding availability and fees.
4. Upon agreement, make arrangements with the Facility Supervisor to finalize all permit requirements.



### Indoor Spaces:

- Gym A, maximum capacity: 300
- Gym B with Stage, maximum capacity: 300
- Red Bud Room, maximum capacity: 40
- Sycamore Room, maximum capacity: 60
- Oak Room, maximum capacity: 32
- Conference Room, maximum capacity: 8
- A kitchenette equipped with an oven, 6 burner stove top, warming oven, microwave, and three basin sink. *Must be reserved in conjunction with a room reservation. You must bring your own kitchen equipment including pots, pans, utensils, storage ware, etc.*

### Outdoor Spaces:

- Little League Baseball Field
- Multi-Use Artificial Turf Field with soccer lines
- Terrace, maximum capacity: 24
- Multi-Use Court with basketball and Pickleball lines
- Two picnic shelters, maximum capacity: 50 each (equipped with a barbecue and sink)





# Facility Reservations

## Sparr Heights Community Center

1613 Glencoe Way  
Glendale, CA 91208  
(818) 548-2187

### Steps To Rent:

1. Choose the event type, date & time.
2. Complete the Community Center Reservation Request Form and submit to the Center.
3. After completing the form, staff will contact you regarding availability and fees.
4. Upon agreement, make arrangements with the Facility Supervisor to finalize all permit requirements.

### Indoor Spaces:

- Verdugo Room maximum capacity: 100
- Garden Room maximum capacity: 40
- A Kitchenette equipped with warming oven, microwave, and two basin sink. *Must be reserved in conjunction with a room reservation. You must bring your own kitchen equipment including pots, pans, utensils, storage ware, etc.*

### Outdoor Spaces:

- South Patio maximum capacity: 80
- North Patio maximum capacity: 8



# Facility Reservations

## PICNIC FACILITIES

(818) 548-2184 | (818) 548-2752

[www.glendaleca.gov/reservations](http://www.glendaleca.gov/reservations)

### Verdugo Park

1621 Canada Blvd., Glendale, CA 91208

- Sections: 5
- Maximum Capacity: 100 per section
- Amenities Include: BBQ grill, electrical outlets available in sections 2, 3, 4
- Jumper permitted

### Catalina Verdugo Adobe

2211 Bonita Ave., Glendale, CA 91208

- Pavilions: 1
- Maximum Capacity: 50
- Amenities Include: electrical outlets
- No onsite cooking

### Palmer Park

610 E. Palmer Ave., Glendale, CA 91205

- Pavilions: 2
- Maximum Capacity: 50 per pavilion
- Amenities Include: electrical outlets, BBQ grill, sink
- Jumper permitted

### Cerritos Park

3690 San Fernando Rd., Glendale, CA 91204

- Pavilions: 1
- Maximum Capacity: 30
- Propane gas BBQ only
- Jumper permitted

### Deukmejian Wilderness Park

3429 Markridge Rd., Glendale, CA 91214

- Pavilions: 1
- Maximum Capacity: 50
- Amenities Include: electrical outlets
- No onsite cooking

### Lower Scholl Canyon Park

2847 E. Glenoaks Blvd., Glendale, CA 91206

- Pavilions: 3
- Maximum Capacity: 80 per pavilion
- Amenities Include: BBQ grill, sink, electrical outlets
- Jumper permitted

### Casa Adobe de San Rafael

610 E. Palmer Ave., Glendale, CA 91202

- Pavilions: 1
- Maximum Capacity: 100
- Amenities Include: sink, electrical outlets
- Jumper permitted
- No onsite cooking

### Central Park Paseo

220 S. Brand Blvd., Glendale, CA 91205

- Maximum Capacity: 75
- Amenities Include: electrical outlets



# Facility Reservations

## COMMUNITY BUILDINGS

(818) 548-2184 | (818) 548-2752

[www.glendaleca.gov/reservations](http://www.glendaleca.gov/reservations)

### Griffith Manor Community Room

1551 Flower St., Glendale, CA 91201

- Maximum Capacity: 50
- Amenities Include: tables, chairs, warming oven, refrigerator, sink
- Jumper permitted



### Dunsmore Community Building

4700 Dunsmore Ave., Glendale, CA 91214

Dunsmore Community Room

- Maximum Capacity: 50
- Amenities Include: tables, chairs
- Jumper permitted

Dunsmore Community Room Kitchen

- Amenities Include: sink, warming oven, refrigerator



### Joe Bridges Clubhouse

2531 E. Glenoaks Blvd., Glendale, CA 91206

- Maximum Capacity: 100
- Amenities Include: tables, chairs, warming oven, refrigerator, sink
- Jumper permitted



### Brand Studios

1601 W. Mountain St., Glendale, CA 91201

- Maximum Capacity: 100
- Amenities Include: tables, chairs, microwave, refrigerator, sink
- No onsite cooking





# Facility Reservations

## WEDDING SITES

(818) 548-2184 | (818) 548-2752

[www.glendaleca.gov/reservations](http://www.glendaleca.gov/reservations)

### Brand Friendship Garden & Victorian Gazebo

1601 W. Mountain St., Glendale, CA 91201

- Maximum Capacity: 200
- Amenities Include: 100 white chairs, electrical outlets



### Casa Adobe de San Rafael

610 E. Palmer Ave., Glendale, CA 91202

- Maximum Capacity: 100
- Amenities Include: sink, 100 white plastic chairs, electrical outlets
- Jumper permitted
- No onsite cooking



### Catalina Verdugo Adobe

2211 Bonita Ave., Glendale, CA 91208

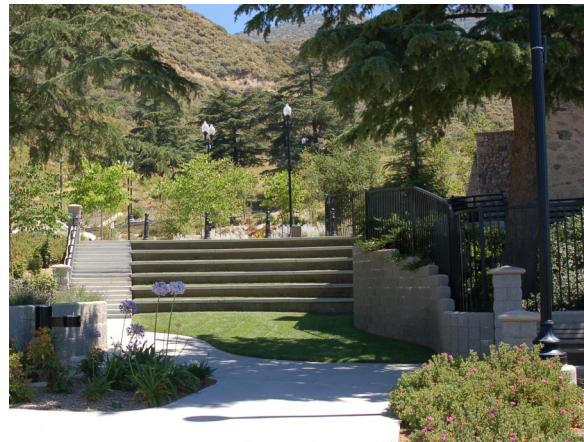
- Maximum Capacity: 50
- Amenities Include: electrical outlets, resin picnic tables, fountain, and kitchenette with a counter and sink



### Deukmejian Wilderness Park

3429 Markridge Rd., Glendale, CA 91214

- Maximum Capacity: 100
- Amenities Include: electrical outlets



# Facility Reservations

## Civic Auditorium

1401 N. Verdugo Rd.  
Glendale, CA 91208  
(818) 548-2787

[www.glendalecivic.com](http://www.glendalecivic.com)

### Steps to Rent:

1. Choose the event type, date & time.
2. Contact the Civic Auditorium at (818) 548-2787 for availability.
3. Visit the Civic Auditorium, 1401 N. Verdugo Rd., Glendale, CA 91208 to reserve the facility.

### Indoor Spaces:

- Upper Auditorium, maximum capacity: 1,100
- Lower Auditorium, maximum capacity: 600
- Commercial Kitchen on both levels
- Terrace Room, maximum capacity: 125 - *Must be reserved in conjunction with the Upper Auditorium*
- Conference Room, maximum capacity: 125 - *Must be reserved in conjunction with the Lower Auditorium*

### Parking:

- Parking Lot and/or Structure - *Must be reserved in conjunction with either the Upper or Lower Auditorium*





# Facility Reservations

## Glendale Sports Complex

2200 Fern Lane  
Glendale, CA 91208  
(818) 937-7440

### Steps To Rent:

1. Choose the event type, date & time.
2. Contact the Sports Office at (818) 937-7440 to check on availability and fees.
3. Visit the Sports office to finalize permit requirements.

### Indoor Spaces:

- Meeting Room, maximum capacity: 50

### Outdoor Spaces:

- Majors Artificial Turf Baseball Field with soccer lines for U12
- 2 Natural Grass Softball Fields
- 2 Artificial Turf Soccer Fields





# Facility Reservations

## Pacific Community Pool

509 S. Pacific Ave.  
Glendale, CA 91204  
(818) 937-7433

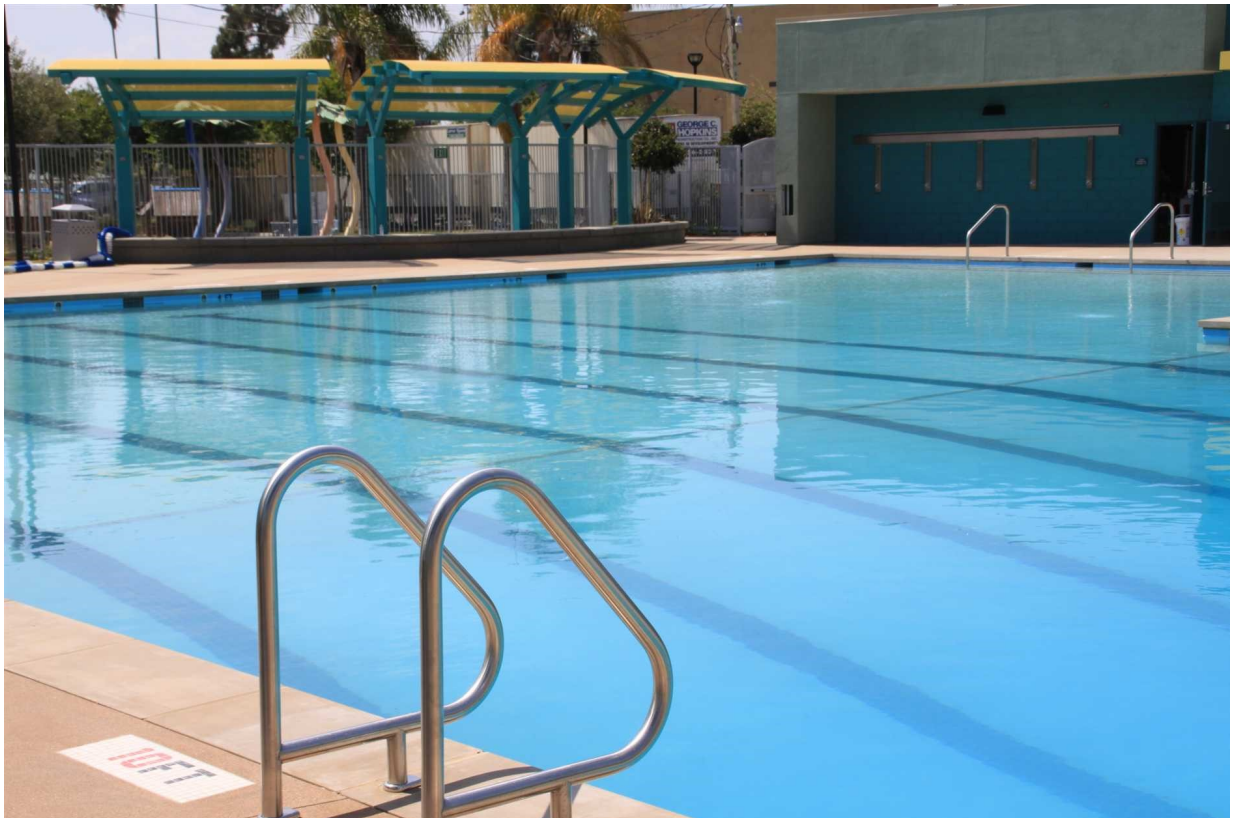
[www.glendaleaquatics.com](http://www.glendaleaquatics.com)

### Steps To Rent:

1. Choose the event type, date & time.
2. Contact Pacific Community Pool at (818) 937-7433 to check on availability and fees.
3. Visit the pool to finalize permit requirements.

### Outdoor Spaces:

- 25 yard / 6-lane pool
- Shallow end for recreation swim
- 2'-10' depth



# Facility Reservations

## Verdugo Skate Park

1621 Canada Blvd.

Glendale, CA 91208

**(818) 548-2786 for hours and operation**

**(818) 548-2184 for facility rentals**

### Steps To Rent:

1. Choose the event type, date & time.
2. Contact the Customer Service Office at (818) 548-2184 to check on availability and fees.
3. Visit the Sports Office to finalize permit requirements.

### Outdoor Spaces:

- 15,000 square foot concrete facility
- 6-9 foot Clover Bowl with an 11 foot Over-Vert section
- 6-10 foot Kidney Pool
- Street Plaza with rails and ledges
- Snake Run that empties into a 9 foot bowl with a loveseat



# Phone Directory

## PHONE DIRECTORY

Administration Office (818) 548-2000 Fax: (818) 548-3789

### RECREATION PROGRAMS

Aquatics Programs .....	(818) 937-7433
Customer Service Office .....	(818) 548-2184, (818) 548-2752
Contract Classes Registration .....	(818) 548-2184, (818) 548-2752
Trails & Open Space Program .....	(818) 548-3795
Party On the Go!/Climbing Wall/Flicks on the Go!.....	(818) 548-2188
Senior Programs & Services .....	(818) 548-3775
Sports Programs for Adults and Youth .....	(818) 937-7440
Therapeutic Recreation Programs .....	(818) 548-3783
Verdugo Skate Park .....	(818) 548-2786
Volunteer Program .....	(818) 548-2792
Youth & Family Services Program .....	(818) 937-7247

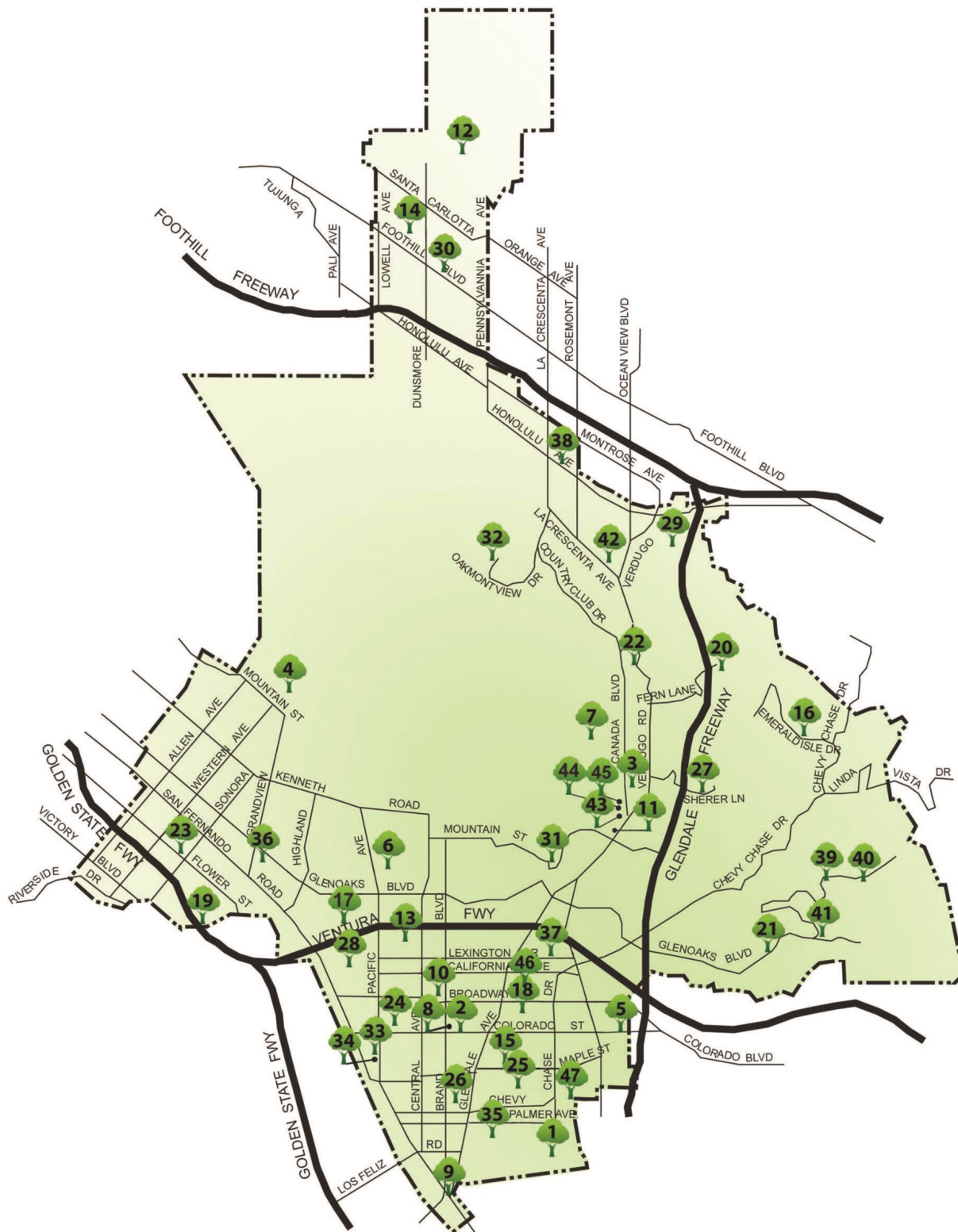
### FACILITY RESERVATION AND INFORMATION

Adult Recreation Center .....	(818) 548-3775
Brand Studios .....	(818) 548-2184, (818) 548-2752
Civic Auditorium .....	(818) 548-2787
Deukmejian Stone Barn Nature Center .....	(818) 937-7428
Film Permits .....	(818) 548-3813
Glendale Sports Complex & Sports Fields .....	(818) 937-7440
Maple Park Community Center .....	(818) 548-3783
Pacific Community Center .....	(818) 548-4098
Pacific Community Pool .....	(818) 937-7433
Park & Picnic Reservations .....	(818) 548-2184, (818) 548-2752
Photography Permits .....	(818) 548-2184, (818) 548-2752
Sparr Heights Community Center .....	(818) 548-2187
Wading Pool Reservations .....	(818) 937-7433
Wedding Reservations .....	(818) 548-2184, (818) 548-2752

Events and programs may be cancelled due to L.A. County Department of Public Health protocols. For updates, visit [www.glendaleca.gov/LG](http://www.glendaleca.gov/LG).



# Map of Glendale Parks



## PARKS, COMMUNITY CENTERS, HISTORIC SITES, AND SPECIAL USE FACILITIES

Events and programs may be cancelled due to L.A. County Department of Public Health protocols. For updates, visit [www.glendaleca.gov/LG](http://www.glendaleca.gov/LG).

# Facility Information

1	Adams Square Mini Park	<u>1020 E. Palmer Ave. Glendale, CA 91205</u>
2	Adult Recreation Center & Central Park	<u>201 E. Colorado St. Glendale, CA 91205</u>
3	Babe Herman Little League Field	<u>1726 Cañada Blvd. Glendale, CA 91208</u>
4	Brand Park	<u>1601 W. Mountain St. Glendale, CA 91201</u>
5	Carr Park	<u>1615 E. Colorado St. Glendale, CA 91205</u>
6	Casa Adobe de San Rafael & Park	<u>1330 Dorothy Dr. Glendale, CA 91202</u>
7	Catalina Verdugo Adobe	<u>2211 Bonita Dr. Glendale, CA 91208</u>
8	Central Park Paseo	<u>220 S. Brand Blvd. Glendale, CA 91202</u>
9	Cerritos Park	<u>3690 San Fernando Rd. Glendale, CA 91204</u>
10	Chess Park	<u>227 N. Brand Blvd. Glendale, CA 91202</u>
11	Civic Auditorium	<u>1401 N. Verdugo Rd. Glendale, CA 91208</u>
12	Deukmejian Wilderness Park and Stone Barn Nature Center	<u>3429 Markridge Rd. Glendale, CA 91214</u>
13	Doran Gardens Mini Park	<u>327 W. Doran St., Glendale, CA 91203</u>
14	Dunsmore Park	<u>4700 Dunsmore Ave. Glendale, CA 91214</u>
15	Elk Mini Park	<u>800 E. Elk Ave. Glendale, CA 91205</u>
16	Emerald Isle Park	<u>2130 Lenore Dr. Glendale, CA 91206</u>
17	Fremont Park	<u>600 W. Hahn Ave. Glendale, CA 91203</u>
18	Glendale Heritage Garden	<u>141 S. Cedar St. Glendale, CA 91205</u>
19	Glendale Narrows Riverwalk	<u>300 Paula Avenue, Glendale, CA 91201- West Entrance</u>
20	Glendale Sports Complex	<u>2200 Fern Lane Glendale, CA 91208</u>
21	Glenoaks Park	<u>2531 E. Glenoaks Blvd. Glendale, CA 91206</u>
22	Glorietta Park	<u>2801 N. Verdugo Rd. Glendale, CA 91208</u>
23	Griffith Manor Park	<u>1551 Flower St. Glendale, CA 91201</u>
24	Harvard Mini Park	<u>425 W. Harvard Glendale, CA 91204</u>
25	Maple Park and Community Center	<u>820 E. Maple St. Glendale, CA 91205</u>
26	Maryland Avenue Park	<u>812 S. Maryland Avenue, Glendale, CA 91205</u>
27	Mayors Bicentennial Park	<u>1787 Loma Vista Dr. Glendale, CA 91208</u>
28	Milford Mini Park	<u>601 W. Milford Ave. Glendale, CA 91203</u>
29	Montrose Park	<u>3529 Clifton Place, Glendale, CA 91208</u>
30	New York Park	<u>4525 New York Ave. Glendale, CA 91214</u>
31	Nibley Park	<u>1103 E. Mountain St. Glendale, CA 91207</u>
32	Oakmont View Park	<u>2940 Oakmont View Dr. Glendale, CA 91208</u>
33	Pacific Park & Community Center	<u>501 S. Pacific Ave. Glendale, CA 91204</u>
34	Pacific Community Pool	<u>509 S. Pacific Ave. Glendale, CA 91204</u>
35	Palmer Park	<u>610 E. Palmer Ave. Glendale, CA 91205</u>
36	Pelanconi Park	<u>1000 Grandview Ave. Glendale, CA 91201</u>
37	Piedmont Park	<u>1145 E. Lexington Dr. Glendale, CA 91206</u>
38	Rockhaven - CLOSED FOR PUBLIC USE	<u>2713 Honolulu Ave., Glendale, CA 91020</u>
39	Scholl Canyon Athletic Fields	<u>3200 E. Glenoaks Blvd. Glendale, CA 91206</u>
40	Scholl Canyon Golf Course & Tennis Center	<u>3800 E. Glenoaks Blvd. Glendale, CA 91206</u>
41	Scholl Canyon Park & Picnic Area	<u>2849 E. Glenoaks Blvd. Glendale, CA 91206</u>
42	Sparr Heights Community Center	<u>1613 Glencoe Way Glendale, CA 91208</u>
43	Stengel Field	<u>1601 Cañada Blvd. Glendale, CA 91208</u>
44	Verdugo Park	<u>1621 Cañada Blvd. Glendale, CA 91208</u>
45	Verdugo Skate Park	<u>1621 Cañada Blvd. Glendale, CA 91208</u>
46	Wilson Mini Park	<u>1101 E. Wilson Glendale, CA 91206</u>
47	Windsor Mini Park	<u>1300 E. Windsor Glendale, CA 91205</u>

Events and programs may be cancelled due to L.A. County Department of Public Health protocols. For updates, visit [www.glendaleca.gov/LG](http://www.glendaleca.gov/LG).

