

City of Glendale, Community Services & Parks

# Leisure Guide

SPRING 2020



**PROGRAMS, ACTIVITIES AND PARKS**  
CHECK OUT OUR SPRING AND SUMMER DAYCAMPS! (SEE PAGE 17)



**Parks  
Make  
Life  
Better!**



[www.glendaleca.gov/parks](http://www.glendaleca.gov/parks)

[@MyGlendaleParks](https://www.instagram.com/MyGlendaleParks)

[#MyGlendaleParks](https://www.facebook.com/MyGlendaleParks)

# What's Inside

3	Greetings from the Director
4	E-Newsletter Information
5-11	Special Events
12	Special Events – Historic Facilities
13	Special Events – Seniors
14-16	Party Packages
17-18	Day Camp Registration Information
19-20	Day Camps – Spring Break
21-27	Day Camps – Summer
28-30	Specialty Camps – Summer
31	Aquatics – Program Information
32-33	Aquatics – Summer Registration Information
34	Aquatics – Summer Program Information
35	Aquatics – Breakthrough Sports
36	Splash Pads
37	Glendale Youth Alliance
38-41	Youth & Family Services
42-44	Drop-In Programs
45-46	Trails & Open Space
47-48	Verdugo Skate Park Programs
49	Contract Class Information
50-51	Youth Classes
52-55	Youth Sports
56-57	Adult Classes
58-60	Adult Sports
61	Registration Information
62	GCC Senior Classes
63-65	Senior Classes
66-68	Activities for Seniors
69-70	Senior Services
71	Filming in Parks & Community Buildings
72	Historic Buildings in Glendale Parks
73-74	Tours of Historic Facilities
75-79	Facility Reservations
80	Facility Information
81	Map of Glendale Parks
82	Phone Directory

## Councilmembers:

Honorable Ara Najarian, Mayor  
Paula Devine, Vartan Gharpetian,  
Vrej Agajanian, and Frank Quintero

## Parks, Recreation & Community Services Commission

Susan Wolfson, *President*  
Dveen Babaian, *Secretary*  
Commissioners:  
Katharine Eberle, Ara Kalfayan, and Grant Michals

## CDBG Advisory Committee

Armik Avedisian, *Chair*  
Zanku Armenian, *Vice Chair*  
Committee Members:  
Ronnie Gharibian, Noraier Ghazarian, and Lila Ramirez

## Management Services

Yasmin K. Beers, *City Manager*  
Roubik Golanian, *Assistant City Manager*  
John Takhtalian, *Deputy City Manager*

## Community Services & Parks

Onnig Bulanikian, *Director*  
Tereza Aleksanian, *Deputy Director - Admin, R&CS, Human Services*  
Koko Panossian, *Deputy Director - Park Services, Park Planning*  
Judith Velasco, *Workforce Development Administrator*  
Ivet Samvelyan, *Community Services Manager - Homeless Programs*  
Maggie Kavarian, *Sr. Comm Svcs Supv - CDBG, Human Services*  
Gabrielle Goglia, *Sr. Community Services Supervisor - R&CS*  
Sevag Garabetian, *Sr. Community Services Supervisor - R&CS*

## SATISFACTION GUARANTEE

*Satisfaction is guaranteed on all programs. If you are not satisfied with the quality of our programs, for any reason, we encourage you to contact us immediately so that we can work to resolve your concerns and improve the quality of our programs for all participants.*

Si tiene necesidad de interpretación, favor de llamar al (818) 548-2782.

Հայերեն տեղեկությունների համար զանգահարել հետևյալ հեռախոսահամարով (818) 548-2000

**Administration Office: (818) 548-2000**

[www.glendaleca.gov/parks](http://www.glendaleca.gov/parks)



Follow us on Twitter: @MyGlendaleParks and



[facebook.com/MyGlendaleParks](https://facebook.com/MyGlendaleParks)



# Greetings From The Director



Spring 2020

Bask in the beauty of spring, and give your soul a boost! Let nature inspire you to continue with your 2020 resolutions and bring growth and rejuvenation to your life.

Take advantage of the longer daylight hours by getting the family together or taking some time to yourself and visiting one of our neighborhood parks, trails and open space areas, and historic homes. Reserve one of our picnic areas or community buildings for a fun gathering or celebration, or participate in a vast array of CSP programs, classes, activities and events sure to reenergize you and bring you personal growth. Community Services & Parks has something for everyone!

Youth of all ages are invited to participate in the Spring Break Camps, youth sports activities, and Life Long Learning classes. We know the importance of planning ahead, so we've included Summer Day Camp and Aquatics Program information inside too!

Adults are encouraged to enroll in Life Long Learning Classes, such as yoga, Zumba, or visual art; participate in open play badminton; and tennis classes. Our adult programs and activities are offered at a variety of times to meet everyone's busy schedule.

Senior adults will enjoy taking part in ongoing education and leisure programs. A nutritional meals program, and a case management, counseling and referral program are also available.

Last but not least, the Community Services & Parks Department is proud to present several special events this season, including the 19<sup>th</sup> Annual Celebration of Cesar Chavez on March 28, Spring Eggstravaganza on April 11, the 10<sup>th</sup> Annual Verdugo Mountains 10K Trail Run & Hike on May 3, Glendale Dodger Night on May 8, and Senior Street Fest on May 13. Plan ahead for the 27<sup>th</sup> Annual Cruise Night event, taking place this summer, on July 18.

Don't miss out on the latest information; get on our e-mail list, sign up to receive our monthly CSP Newsletter, and follow us on Twitter and Facebook @MyGlendaleParks. Take a look inside for more information.

Respectfully,

A handwritten signature in blue ink, appearing to read "Onnig Bulanikian".

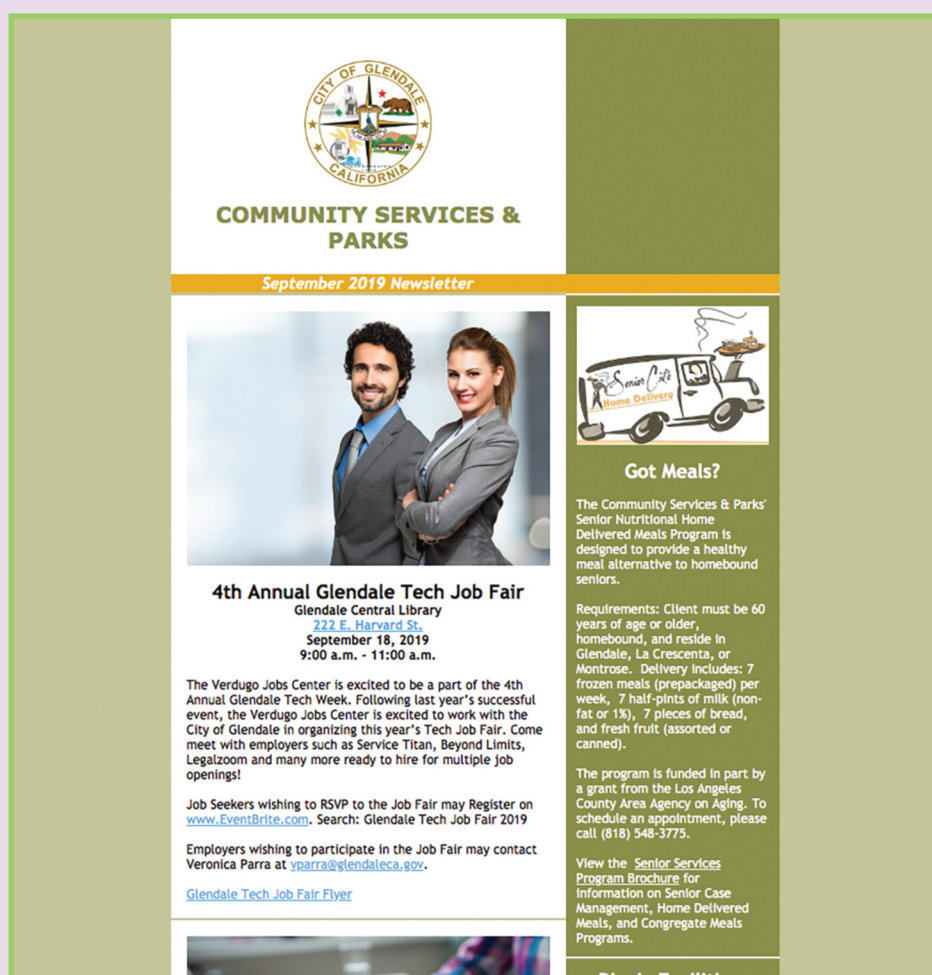


Onnig Bulanikian, Director  
Community Services & Parks Department

# E-Newsletter Information

## Community Services & Parks (CSP) Monthly E-Newsletter

Get the most up-to-date information about what is happening in the Community Services & Parks Department by signing up to receive the department's monthly E-Newsletter. Learn about upcoming events, community meetings, registration deadlines, parks projects, ongoing programs and services, program success stories, and more.



E-mail us at [CSP@glendaleca.gov](mailto:CSP@glendaleca.gov) to be added to the e-mail distribution list.

*(P.S. We never make your e-mail address available to any other company or organization.)*

[www.glendaleca.gov/parks](http://www.glendaleca.gov/parks)

## Special Events

# PARENT'S NIGHT OUT

Drop off the kids for a night of fun activities, friends, food and a movie.

The fee is \$15.00 per child, ages 5 to 12 years old. Participants are encouraged to bring pajamas, a blanket and a pillow. For more information, please call (818) 548-2187 for Sparr Heights Community Center or (818) 548-4098 for Pacific Community Center.

**Date:** April 17, 2020  
**Time:** 6:00 p.m. – 12:00 a.m.  
**Location:** Sparr Heights Community Center  
1613 Glencoe Way, Glendale, CA 91208

**Date:** May 9, 2020  
**Time:** 6:00 p.m. – 12:00 a.m.  
**Location:** Pacific Community Center  
501 S. Pacific Ave., Glendale, CA 91204



# Special Events



**PACIFIC COMMUNITY CENTER**  
**501 S. Pacific Ave, Glendale, CA 91204**

**SATURDAY**  
**MARCH 28**  
1:00 p.m. - 4:00 p.m.  
**2020**

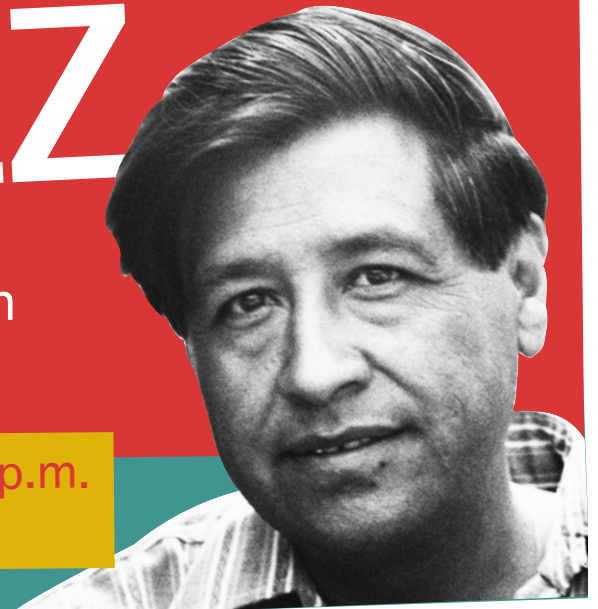
Program begins at 2:00 p.m.

The City Of Glendale Invites you to Celebrate the Life and Work of

# CÉSAR CHAVEZ

19th Annual Celebration

**FREE** Tacos served from 1:15 p.m.  
until food runs out



   @MyGlendale #MyGlendale

For additional information call (818) 548-4098 or visit [www.glendaleca.gov](http://www.glendaleca.gov)

[www.glendaleca.gov/parks](http://www.glendaleca.gov/parks)



# Special Events



## SPRING Eggstravaganza

**Saturday, April 11, 2020**  
**10:00 a.m. - 1:00 p.m.**

Join us for a morning of arts & crafts, carnival games, face painting, Glendale ROCKS! Climbing Wall, egg hunt, prizes and an appearance from the Easter Bunny.

### Egg Hunting

**10:30 a.m.** - 4 Year Olds & Younger

**10:50 a.m.** - 5 Year Olds

**11:10 a.m.** - 6 Year Olds

**11:30 a.m.** - 7 Year Olds

**11:50 a.m.** - 8 Year Olds

**12:10 p.m.** - 9 Year Olds

**12:25 p.m.** - 10 Year Olds

**12:40 p.m.** - 11 & 12 Year Olds

*Please don't forget to bring your baskets.*

*Adults will not be permitted on the field for age groups 5 years old and older.*

### Pacific Community Center

501 S. Pacific Ave., Glendale, CA 91204

**For more information, call 818-548-4098.**



Community Services  
& Parks

Parks  
Make  
Life  
Better!



@myglendaleparks



# Special Events

## 10<sup>TH</sup> ANNIVERSARY



**Dignity Health™**  
Glendale Memorial Hospital  
and Health Center

**PRESENTS:**



## Verdugo Mountains 10K Trail Run & Hike

Brand Park, 1601 W. Mountain St., Glendale, CA 91201

Sunday, May 3, 2020

8:00 a.m.

Register today for the Verdugo Mountains 10K, presented by Dignity Health Glendale Memorial Hospital and Health Center, and produced by the City of Glendale Community Services & Parks Department to benefit the Glendale Parks & Open Space Foundation. The 6.2 miles and 1,735 foot elevation gain will make for one Sunday morning you will never forget!

After the race, participants are invited to enjoy a free pancake breakfast. There will also be a Race Expo, offering an opportunity for local health and fitness related businesses and nonprofits to exhibit their wares.

To register or for more information, visit [www.RunTheVerdugos.com](http://www.RunTheVerdugos.com), and follow @Verdugo10K for updates.

[www.glendaleca.gov/parks](http://www.glendaleca.gov/parks)

# Special Events



★ **Friday, May 8, 2020** | **7:10PM** ★

**9<sup>TH</sup> ANNUAL GLENDALE DODGER NIGHT**  
Benefiting the Glendale Parks & Open Space Foundation

**LOS ANGELES DODGERS VS. SAN DIEGO PADRES**  
**FRIDAY NIGHT FIREWORKS**  
**INFIELD RESERVE | \$45 PER TICKET**

**DODGER STADIUM**  
1000 VIN SCULLY AVENUE, LOS ANGELES, CA 90012

**JOIN US! BUY YOUR TICKETS TODAY!**

**GLENDALEDODGERNIGHT.COM | 818.548.2792**

**HELP US SPREAD THE WORD!**



**#GLENDALEDODGERNIGHT**

**GLENDALE PARKS &  
OPEN SPACE  
FOUNDATION**



Learn More About the Glendale Parks & Open Space Foundation | [GlendaleParksFoundation.org](http://GlendaleParksFoundation.org)

# Special Events

# SENIOR STREET FEST

SAVE THE DATE

**Make Your Mark**  
Older Americans Month

**Wednesday, May 13, 2020**  
**10:30 AM – 1:30 PM**

**Artsakh Paseo**  
125 N. Artsakh Ave., Glendale, CA 91206

**For more information call (818) 548-3775**



Community Services  
& Parks



@MyGlendaleParks

[www.glendaleca.gov/parks](http://www.glendaleca.gov/parks)



# Special Events



CITY OF GLENDALE PRESENTS



The 27th Annual

# Cruise Night



Saturday, July 18, 2020

5:30pm – 10:30pm

In the heart of Glendale on Brand Blvd.

Registration includes a swag bag  
with a free event t-shirt

NEW this year! Modified Import and  
Exotic Cars will be accepted!

[GlendaleCruiseNight.com](http://GlendaleCruiseNight.com)

Information Hotline: (818) 548-6464



**TROPHIES AWARDED!** (Categories at Judges' discretion)

**Fireworks! Live Entertainment! Family Fun & Activities!**



@cruisenightglendale #glendalecruisenight





# Special Events - Historic Facilities

## "Shoseian" Whispering Pine Teahouse & Friendship Garden

Inside Brand Park, 1601 West Mountain St., Glendale, CA 91201; (626) 390-0633

Join the Friends of the Shoseian Teahouse every third Sunday of the month for these family friendly events.

Please RSVP to: [friends@shoseianteahouse.com](mailto:friends@shoseianteahouse.com)

### Sakura Matsuri – Cherry Blossom Festival

Come join us for our biggest event of the year!

Date: March 15, 2020

Time: 10:00 a.m. - 3:00 p.m.

Donation: \$20

### Japanese Robot Anime of the '80's

Date: April 19, 2020

Time: 11:00 a.m. - 1:00 p.m.

Donation: \$5

### Omotesenke Tea Ceremony

Date: May 17, 2020

Time: 11:00 a.m. - 1:00 p.m.

Donation: \$20



[www.glendaleca.gov/parks](http://www.glendaleca.gov/parks)

# Special Events - Seniors

## SPECIAL HOLIDAY CELEBRATIONS FOR SENIORS

Participants must call ahead and make reservations at least 1 week prior to the event.

- For reservations at the Adult Recreation Center, call (818) 548-3772.
- For reservations at Sparr Heights Community Center, call (818) 548-2187.

A donation of \$2.50 is requested for lunch for seniors, 60 years of age or older, and their spouses regardless of age. Suggested donation for non-seniors is \$4.75 per person.



### *St. Patrick's Luncheon Celebration*

Celebrate St. Patrick, one of the patron saints of Ireland, while you feast on a traditional Irish meal. Don't forget to wear green!

**Date:** Tuesday, March 17, 2020

**Time:** 10:00 a.m. - 1:00 p.m.

### **Easter Luncheon**

Join the Easter Bunny in celebrating Easter and everything spring. Enjoy our special meal with your friends during lunch.

**Date:** Thursday, April 9, 2020

**Time:** 10:00 a.m. - 1:00 p.m.



### *Mother's Day Celebration*

Join us for our annual Mother's Day luncheon to celebrate mom.

**Date:** Thursday, May 7, 2020

**Time:** 10:00 a.m. - 1:00 p.m.

### **90 Plus Celebration**

Join us as we honor seniors who have reached the age of 90 milestone. The event features a special lunch, live music and more. (This event is exclusive to the Adult Recreation Center.)

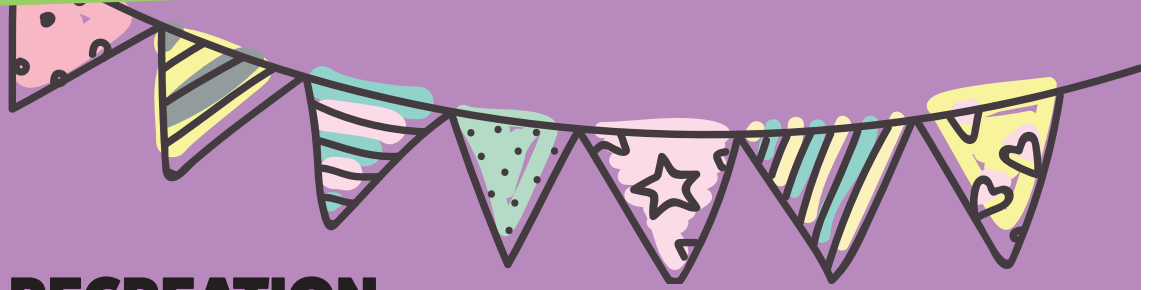
**Date:** Thursday, May 28, 2020

**Time:** 10:00 a.m. - 1:00 p.m.





# Party Packages



## MOBILE RECREATION

City of Glendale

# PARTY ON THE GO!

Each party package is designed for children ages 5 - 12 and will include arts and crafts, sports and games. The basic "Party on the Go!" package will include two staff for two hours and 6 games/activities for up to 12 children. Additional fees will apply for larger packages.

Programs limited to the Glendale and La Crescenta area.

#### FEES:

- Standard pricing: \$300 for the first 2 hours
- \$100 for every hour thereafter
- (Non-profit rates available upon request and approval with proper tax status documentation)

Half of the total rental fees are due at the time of reservation to guarantee date.



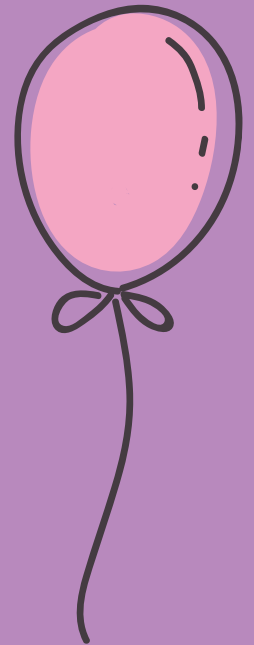
Standard Package includes six (6) from the following:

#### Games

Potato Sack Races  
Capture the Flag  
Balloon Toss  
Bingo  
Hula Hoop Contest  
Frisbee Distance Throw  
Obstacle Course

#### Arts and Crafts

Paint art  
Clay art  
Foamy art  
Bead art  
Wooden art  
Glitter art  
Coloring



For program information, please call (818) 548-2188.



# Party Packages



## ***FLICKS ON THE GO!*** **Mobile Movie Package**

Watching a movie under the moonlight brings back the days of the drive-in era and will surely have nostalgic appeal to families throughout our community. Watching a movie, playing video games or streaming content on a large screen during your outdoor special event will definitely elevate your event and add a hip factor. We have two packages available for your special event!

### **Flicks on the Go! – Package A**

- 17 foot wide by 10 foot tall large projection screen with high powered video projection
- High Powered Sound System with 4 Speakers up to 1,000 Watt max output each
- Blue Ray DVD Player (*Customer is responsible to pay license fees and obtain rights to display content*)
- Generator to provide power
- 3 employees for delivery, installation, operation and breakdown
- A popcorn machine, carnival games, craft tables are available for an additional fee

### **Flicks on the Go! – Package B**

- 15 foot wide by 8 foot tall LED Screen with 936 X 520p (4.81mm) resolution
- Height Adjustable and full 360 degree rotation for optimal viewing
- High Powered Sound System with 2 Speakers up to 1,000 Watt max output each
- Blue Ray DVD Player
- Dish Network Satellite Feed (*Customer is responsible to pay license fees and obtain rights to display content*)
- HDMI and SDI auxiliary inputs for live feed
- HDMI auxiliary input for gaming consoles (*Gaming console not included*)
- Generator to provide power
- A popcorn machine, carnival games, craft tables are available for an additional fee

For program information, please call (818) 548-2188.

# Party Packages

## ***GLENDALE ROCKS!***

### **CLIMBING WALL**



Glendale Rocks! portable climbing wall is 26 vertical feet of pure fun and excitement! The wall can be used for fundraisers, company events, grand openings, physical education classes or special events. The wall can handle 4 climbers at a time and up to 45 climbers per hour. The standard rental package will include two employees, the wall, and safety equipment for a two hour period.

Programs limited to the Glendale and La Crescenta area.

#### **FEES:**

- Standard pricing: \$300 for the first 2 hours
- \$100 for every hour thereafter
- Non profit rates available upon request and approval with proper tax status documentation

Half of the total rental fees are due at the time of reservation to guarantee date.

For program information, please call (818) 548-2188.

# Day Camp Registration Information

The Community Services & Parks Department is pleased to offer day camps each season scheduled around the Glendale Unified School District calendar. Please see the individual camp listings for specific details on each camp.

## Camps in this Issue: Important Dates

<u>Season</u>	<u>Scholarship/Discount Applications Due by 5 p.m.</u>	<u>Registration Begins</u>
Spring Break	January 10, 2020 (CLOSED)	February 10, 2020
Summer	March 26, 2020	April 25, 2020 (Glendale Resident ONLY. In Person ONLY.) April 27, 2020 (General Registration. Online, Phone, and In Person.)

## Registration

**Online** registration is available at [www.myglendaleparks.com](http://www.myglendaleparks.com). Please verify that your login information and password are up-to-date and you are able to log in prior to registration day. Due to the high volume of phone calls expected on April 27, 2020 for the first day of Summer Day Camps General Registration, we highly encourage you to resolve all login issues before April 23, 2020.

**Phone:** Please call the number listed for your preferred camp site, or the Customer Service Office at (818) 548-2184.

**In Person:** Please visit any of the locations listed below to register in person. Your preferred camp site is recommended.

## Residency Status

The Community Services & Parks Department (CSP) offers reduced Glendale Resident rates for day camps to customers who reside within Glendale Unified School District boundaries and have provided the required proof of residency. Customers only need to verify residency once per year during any season, but must re-submit proof every summer regardless of which season residency status was last verified. **All Glendale residents must provide proof of residency again, beginning March 16, 2020. Proof of residency can be provided at the time of in-person camp registration, but in order to obtain Glendale Resident rates while registering online or by phone, residency status must be verified in advance. Customers not verified as Glendale Residents at the time of registration will be charged non-resident rates and will NOT be refunded the difference for any non-resident rates paid, even if proof is provided at a later time.**

You can obtain residency status in advance of camp registration by emailing a copy of your two most recent utility bills or a copy of your current, executed rental agreement to our Customer Service Office at [cspcustomerservice@glendaleca.gov](mailto:cspcustomerservice@glendaleca.gov). Please include your full name, valid address, and a copy of the proof in the email. Emails will be reviewed within two (2) business days, and you will receive an email response confirming residency when it has been completed.

You may also pre-register in person during business hours at any of the following locations:

### **Adult Recreation Center**

201 E. Colorado St.  
Glendale, CA 91205  
(818) 548-3775

### **Customer Service Office**

1401 N. Verdugo Rd.  
Glendale, CA 91208  
(818) 548-2184

### **Glendale Sports Complex**

2200 Fern Lane  
Glendale, CA 91208  
(818) 937-7440

### **Pacific Community Center**

501 S. Pacific Ave.  
Glendale, CA 91204  
(818) 548-4098

### **Pacific Community Pool**

509 S. Pacific Ave.  
Glendale, CA 91204  
(818) 937-7433

### **Maple Park Community Center**

820 E. Maple St.  
Glendale, CA 91205  
(818) 548-3694

### **Sparr Heights Community Center**

1613 Glencoe Way  
Glendale, CA 91208  
(818) 548-2188

# Day Camp Registration Information

## Scholarship and Discount Opportunities

Glendale residents may be eligible to receive a scholarship for camps at Maple Park Community Center or Pacific Community Center. A discount is also available for Glendale residents at all locations, based on household income levels. Please visit [www.glendaleca.gov/parks](http://www.glendaleca.gov/parks) and click on Day Camps in the left navigation menu for scholarship and discount information, as well as "Glendale Resident" information.

## Late Registration and Cancellation Policy

- A \$20 late registration fee will be charged per camper for payments not received by Wednesday at 5:00 p.m. prior to the week for which you are registering.
- A cancellation fee of \$20 per week, per child will be assessed for all transfers and cancellations of camp locations, dates of enrollment, or participation.

## Day Camp T-Shirts

A camp T-shirt must be purchased at camp for \$5 (cash or check). Campers must wear their camp T-shirt on the designated day of the week.

## Excursions

Some summer day camps include one excursion per week. Listed excursion sites are subject to change. Parents will be notified weekly of the excursion site.

## Special Needs Accommodations

The Community Services & Parks Department will provide reasonable accommodations toward the inclusion of a participant. Please contact the Therapeutic Recreation Program supervisor at (818) 548-3783 two weeks prior to the start of the program. Ample time is required to determine the needs for each request.

## Payment Methods

**In Person\*:** Cash, Check, or Credit Card

**Online or Over the Phone\*:** Credit Card

*\*The City of Glendale charges a non-refundable 2.5% service fee for all credit card transactions processed in person or over the phone.*



[www.glendaleca.gov/parks](http://www.glendaleca.gov/parks)



# Day Camps – Spring Break

## Kool Dayz Spring Camp

Pacific Community Center  
501 S. Pacific Ave., Glendale, CA 91204  
For information, call (818) 548-4098.

Kids will have fun making crafts, playing sports and games, competing in contests and making new friends. Campers must provide their own lunch, drink and snacks daily.

### 5-Day Camp

**Dates:** Monday - Friday, March 16 - 20, 2020

**Ages:** 6 - 12

	<u>Glendale</u> <u>Resident Fees</u>	<u>Non-Resident Fees</u>	<u>Times</u>
<b>Full Day</b>	\$85/week/child	\$100/week/child	9:00 a.m. - 4:00 p.m.
<b>Before Care</b>	\$20/week/child	\$ 20/week/child	7:00 a.m. - 9:00 a.m.
<b>After Care</b>	\$20/week/child	\$ 20/week/child	4:00 p.m. - 6:00 p.m.



# Day Camps – Spring Break

## Travelin' Teens Spring Camp

Pacific Community Center  
501 S. Pacific Ave., Glendale, CA 91204  
For information, call (818) 548-4098.

Teen campers will explore fun Glendale locations and surrounding communities by foot or using local bus lines. Teens will make new friends, go on a field trip, and chill with other teens. Campers must provide their own lunch, drink, and snacks daily.

### 5-Day Camp

**Dates:** Monday - Friday, March 16 - 20, 2020

**Ages:** 12 - 14

	<u>Glendale Resident Fees</u>	<u>Non-Resident Fees</u>	<u>Times</u>
<b>Full Day</b>	\$85/week/child	\$100/week/child	9:00 a.m. - 4:00 p.m.
<b>Before Care</b>	\$20/week/child	\$ 20/week/child	7:00 a.m. - 9:00 a.m.
<b>After Care</b>	\$20/week/child	\$ 20/week/child	4:00 p.m. - 6:00 p.m.



## Sparr-Tacular Spring Camp

Sparr Heights Community Center  
1613 Glencoe Way, Glendale, CA 91208  
For information, call (818) 548-2187.

Flowers are blooming and Spring Break fun is here at the Sparr Heights Community Center! Children ages 5 - 12 will enjoy games, crafts, and a special treat on Friday. Campers must provide their own lunch, drinks and snacks.

### 5-Day Camp

**Dates:** Monday - Friday, March 16 - 20, 2020

**Ages:** 5 - 12 (Child must be 5 years old by March 20, 2020.)

<u>Glendale Fees</u>	<u>Non-Resident Fees</u>	<u>Times</u>
\$65/week/child	\$80/week/child	12:00 p.m. - 6:00 p.m.



# Day Camps - Summer

## Summer Blast Camp

Griffith Manor Park  
1551 Flower St., Glendale, CA 91201  
For information, call (818) 548-2792

Camp activities include arts and crafts, sports, games, swimming, a weekly field trip every Tuesday, and movies at camp. Campers must provide their own lunch, drink, and snacks daily.

**Dates:** Monday – Friday, June 15 - August 14, 2020

**Ages:** 6 - 12 (Child must be 6 years old by August 14, 2020)<sup>1</sup>

### Tuesday Excursion

<b>Week 1:</b>	June 15-19	Adventure City
<b>Week 2:</b>	June 22-26	Scooter's Jungle
<b>Week 3:</b>	June 29-July 2 (Closed Friday, July 3)	El Capitan Theatre
<b>Week 4:</b>	July 6-10	Cabrillo Marine Aquarium
<b>Week 5:</b>	July 13-17	Discover Cube LA
<b>Week 6:</b>	July 20-24	California Science Center
<b>Week 7:</b>	July 27-July 31	Jump 'n Jammin
<b>Week 8:</b>	August 3-7	Kidspace Museum
<b>Week 9:</b>	August 10-14	Scooter's Jungle

### Glendale

	<u>Resident Fees</u>	<u>Non-Resident Fees</u>	<u>Times</u>
<b>Full Day</b>	\$120/week/child	\$135/week/child	9:00 a.m. - 4:00 p.m.
<b>Before Care</b>	\$ 20/week/child	\$ 20/week/child	7:00 a.m. - 9:00 a.m.
<b>After Care</b>	\$ 20/week/child	\$ 20/week/child	4:00 p.m. - 6:00 p.m.

<sup>1</sup> The minimum age requirement has changed this year from 5 years to 6 years.



# Day Camps - Summer



## Summer Spectacular Camp

Verdugo Park  
1621 Canada Blvd., Glendale, CA 91208  
For information, call (818) 548-2792

Camp activities include arts and crafts, sports, games, swimming, a weekly field trip every Wednesday, movies at camp, weekly theme activities, camper choice days and fun with friends. Campers must provide their own lunch, drink, and snacks daily.

**Dates:** Monday – Friday, June 15 - August 14, 2020

**Ages:** 6 - 14 (Child must be 6 years old by August 14, 2020)<sup>1</sup>

### Wednesday Excursion

<b>Week 1:</b>	June 15-19	Aquarium of the Pacific
<b>Week 2:</b>	June 22-26	Raging Waters
<b>Week 3:</b>	June 29-July 2 (Closed Friday, July 3)	Universal CityWalk & IMAX
<b>Week 4:</b>	July 6-10	John's Incredible Pizza Company
<b>Week 5:</b>	July 13-17	Boomers!
<b>Week 6:</b>	July 20-24	Knott's Soak City USA
<b>Week 7:</b>	July 27-July 31	Knott's Berry Farm
<b>Week 8:</b>	August 3-7	Raging Waters
<b>Week 9:</b>	August 10-14	Six Flags Magic Mountain

### Glendale Resident Fees

### Non-Resident Fees

### Times

<b>Full Day</b>	\$150/week/child	\$165/week/child	9:00 a.m. - 6:00 p.m.
<b>Before Care</b>	\$ 20/week/child	\$ 20/week/child	7:00 a.m. - 9:00 a.m.

<sup>1</sup> The minimum age requirement has changed this year from 5 years to 6 years.



# Day Camps - Summer

## Sparr-Tacular Summer Camp

**Sparr Heights Community Center**  
1613 Glencoe Way, Glendale, CA 91208  
For information, call (818) 548-2187

It's time for summer fun at Sparr Heights Community Center! Children ages 6 - 12 will enjoy games, crafts, and a special treat on Fridays. Children must bring a sack lunch Monday through Thursday. Registration is on a weekly basis.

**Dates:** Monday – Friday, June 15 - August 14, 2020

**Ages:** 6 - 12 (Child must be 6 years old by August 14, 2020)<sup>1</sup>

### Weekly Theme

<b>Week 1:</b>	June 15-19	Heroes of Glendale Week
<b>Week 2:</b>	June 22-26	Pirate's Lost Treasure Week
<b>Week 3:</b>	June 29-July 2 (Closed Friday, July 3)	Fiesta Week
<b>Week 4:</b>	July 6-10	Magic Week
<b>Week 5:</b>	July 13-17	Mad Scientist Week
<b>Week 6:</b>	July 20-24	Hawaiian Luau Week
<b>Week 7:</b>	July 27-July 31	Under the Sea Week
<b>Week 8:</b>	August 3-7	Carnival Week
<b>Week 9:</b>	August 10-14	Water World Week

### Glendale

#### Resident Fees

\$65/week/child

#### Non-Resident Fees

\$80/week/child

#### Times

12:00 p.m. - 6:00 p.m.

<sup>1</sup> The minimum age requirement has changed this year from 5 years to 6 years.



# Day Camps - Summer

## Maple Starz Summer Camp

Maple Park Community Center  
820 E. Maple St., Glendale, CA 91205  
For information, call (818) 548-3694 or (818) 548-3783

Children will spend the day with old friends and make new ones in a fun, supervised, indoor and outdoor setting. Games, arts and crafts, music, sports, and water fun are included in the fee. Space is limited; register early. Hot/Cold lunch will be provided as part of the GUSD Seamless Summer Lunch Program. Lunch will not be provided during Week 9 of camp, August 10 - 14, 2020.

**Dates:** Monday – Friday, June 15 - August 14, 2020

**Ages:** 6 - 12 (Child must be 6 years old by August 14, 2020)<sup>1</sup>

### Weekly Theme

<b>Week 1:</b>	June 15-19	Superhero Academy
<b>Week 2:</b>	June 22-26	The Wild West
<b>Week 3:</b>	June 29-July 2 (Closed Friday, July 3)	Maple Space Cadets / To the Galaxy & Beyond
<b>Week 4:</b>	July 6-10	Art Attack! / Maple Artists
<b>Week 5:</b>	July 13-17	Animal Planet / Animal Safari
<b>Week 6:</b>	July 20-24	Under The Sea
<b>Week 7:</b>	July 27-July 31	A'hoy Mates!
<b>Week 8:</b>	August 3-7	Maple All-Stars
<b>Week 9:</b>	August 10-14	Summer Lovin'

### Glendale

	<u>Resident Fee</u>	<u>Non-Resident Fee</u>	<u>Time</u>
<b>Full Day</b>	\$75/week/child	\$90/week/child	9:00 a.m. - 4:00 p.m.
<b>Half Day Morning<sup>2</sup></b>	\$55/week/child	\$70/week/child	9:00 a.m. - 1:00 p.m.
<b>Half Day Afternoon</b>	\$55/week/child	\$70/week/child	12:00 p.m. - 4:00 p.m.
<b>Before Care</b>	\$20/week/child	\$20/week/child	7:00 a.m. - 9:00 a.m.
<b>After Care</b>	\$20/week/child	\$20/week/child	4:00 p.m. - 6:00 p.m.

<sup>1</sup> The minimum age requirement has changed this year from 5 years to 6 years.

<sup>2</sup> Camp hours were extended by 1 hour; pick up time changed from 12 p.m. to 1 p.m.



# Day Camps - Summer



## Kool Dayz Summer Camp

Pacific Community Center  
501 S. Pacific Ave., Glendale, CA 91204  
For information, call (818) 548-4098

Campers will spend the day with old friends and make new ones in a fun, supervised, indoor and outdoor setting. Swimming, games, arts and crafts, music, dance and sports are part of the Kool day. Hot/Cold lunch will be provided as part of the GUSD Seamless Summer Lunch Program. Lunch will not be provided during Week 9 of camp, August 10 - 14, 2020.

**Dates:** Monday – Friday, June 15 - August 14, 2020

**Ages:** 6-12 (Child must be 6 years old by August 14, 2020)

### Weekly Theme

<b>Week 1:</b>	June 15-19	Looney Tunes
<b>Week 2:</b>	June 22-26	Superheroes
<b>Week 3:</b>	June 29-July 2 (Closed Friday, July 3)	Party in the USA
<b>Week 4:</b>	July 6-10	That's So 70's
<b>Week 5:</b>	July 13-17	Wild Wild West
<b>Week 6:</b>	July 20-24	Pacific Ninja Warriors
<b>Week 7:</b>	July 27-July 31	Pirates of the Pacific
<b>Week 8:</b>	August 3-7	Sports Extravaganza
<b>Week 9:</b>	August 10-14	Summerween

	<b>Glendale Resident Fee</b>	<b>Non-Resident Fee</b>	<b>Time</b>
<b>Full Day</b>	\$85/week/child	\$100/week/child	9:00 a.m. - 4:00 p.m.
<b>Half Day Morning<sup>2</sup></b>	\$60/week/child	\$ 75/week/child	9:00 a.m. - 1:00 p.m.
<b>Half Day Afternoon</b>	\$60/week/child	\$ 75/week/child.	12:00 p.m. - 4:00 p.m.
<b>Before Care</b>	\$20/week/child	\$ 20/week/child	7:00 a.m. - 9:00 a.m.
<b>After Care</b>	\$20/week/child	\$ 20/week/child	4:00 p.m. - 6:00 p.m.

<sup>2</sup> Camp hours were extended by 1 hour; pick up time changed from 12 p.m. to 1 p.m.



# Day Camps - Summer

## Kinder Camp

Pacific Community Center  
501 S. Pacific Ave., Glendale, CA 91204  
For information, call (818) 548-4098.

Kinder Camp is a great way to introduce your preschooler or kindergartener to day camp. Your camper will interact with other campers, make new friends, and develop social skills. Campers will have indoor and outdoor games, sports, arts and crafts, and story time. Hot/Cold lunch will be provided as part of the GUSD Seamless Summer Lunch Program. Lunch will not be provided during Week 9 of camp, August 10 - 14, 2020.

**Dates:** Monday – Friday, June 15 - August 14, 2020

**Ages:** 4 – 5 (Child must be 4 years old by August 14, 2020 and able to perform all restrooms tasks independently.)

### Weekly Theme

<b>Week 1:</b>	June 15-19	Looney Tunes
<b>Week 2:</b>	June 22-26	Superheroes
<b>Week 3:</b>	June 29-July 2 (Closed Friday, July 3)	Party in the USA
<b>Week 4:</b>	July 6-10	That's So 70's
<b>Week 5:</b>	July 13-17	Wild Wild West
<b>Week 6:</b>	July 20-24	Pacific Ninja Warriors
<b>Week 7:</b>	July 27-July 31	Pirates of the Pacific
<b>Week 8:</b>	August 3-7	Sports Extravaganza
<b>Week 9:</b>	August 10-14	Summerween

### Glendale

	<u>Resident Fee</u>	<u>Non-Resident Fee</u>	<u>Time</u>
<b>Full Day<sup>3</sup></b>	\$105/week/child	\$120/week/child	9:00 a.m. - 4:00 p.m.
<b>Half Day Morning</b>	\$60/week/child	\$75/week/child	9:00 a.m. - 1:00 p.m.
<b>Half Day Afternoon<sup>3</sup></b>	\$60/week/child	\$75/week/child	12:00 p.m. - 4:00 p.m.
<b>Before Care</b>	\$20/week/child	\$20/week/child	7:00 a.m. - 9:00 a.m.
<b>After Care</b>	\$20/week/child	\$20/week/child	4:00 p.m. - 6:00 p.m.

<sup>3</sup> This is a new session offered this summer.





# Day Camps - Summer



## Travelin' Teens Day Camp

**Pacific Community Center**  
**501 S. Pacific Ave., Glendale, CA 91204**  
**For information, call (818) 548-4098**

Teen campers will explore fun Glendale locations and surrounding communities using local bus lines. Teens will make new friends, swim, go on field trips and chill with other teens. Field trips may include beach trip, movies, bowling, hiking, skating, Citywalk, the LA Zoo, and more! Hot/Cold lunch will be provided as part of the GUSD Seamless Summer Lunch Program. Lunch will not be provided during Week 9 of camp, August 10 - 14, 2020.

**Dates:** Monday - Friday, June 15 - August 14, 2020

**Ages:** 12 – 14 (Child must be 12 years old by August 14, 2020)

### Thursday Excursion

<b>Week 1:</b>	June 15-19	Glowzone
<b>Week 2:</b>	June 22-26	Moonlight Rollerway
<b>Week 3:</b>	June 29-July 2 (Closed Friday, July 3)	L.A. Sparks
<b>Week 4:</b>	July 6-10	Infinity Rooms at The Broad
<b>Week 5:</b>	July 13-17	Madame Tussauds
<b>Week 6:</b>	July 20-24	Universal Studios Hollywood
<b>Week 7:</b>	July 27-July 31	Sky Zone
<b>Week 8:</b>	August 3-7	Maze Rooms Los Angeles
<b>Week 9:</b>	August 10-14	Mountasia

	<u>Glendale</u>		
	<u>Resident Fee</u>	<u>Non-Resident Fee</u>	<u>Time</u>
<b>Full Day</b>	\$85/week/child	\$100/week/child	9:00 a.m. - 4:00 p.m.
<b>Before Care</b>	\$20/week/child	\$ 20/week/child	7:00 a.m. - 9:00 a.m.
<b>After Care</b>	\$20/week/child	\$ 20/week/child	4:00 p.m. - 6:00 p.m.

# Specialty Camps - Summer

## Specialty Skate Camps

### Verdugo Skate Park

1621 Canada Blvd., Glendale, CA 91208

For information, call (818) 548-2786 or (818) 937-7440

**Dates:** Monday - Friday, July 20 - August 14, 2020

**Ages:** 7 - 17 (Child must be 7 years old by August 14, 2020)

### Wednesday Excursion

**Week 1:** July 20 - 24

**Week 2:** July 27 - 31

**Week 3:** August 3 - 7

**Week 4:** August 10 - 14

Knott's Soak City

Knott's Berry Farm

Raging Waters

Six Flags Magic Mountain



## "GROMS" SK8 CAMP (Beginning Level)

The camp includes skating instruction and activities held at the Verdugo Skate Park. In addition, skaters will go on a midweek excursion with the "Shredders" Traveling Sk8 Campers, and will go swimming at Pacific Community Pool one day. Snack and drinks will be provided. Participants must provide their own lunch daily (participants may NOT leave the camp site to get food in the area). Skaters must provide their own skateboard, helmet, and elbow and knee pads. Weekly excursions are held on Wednesday. Campers should bring \$20 for lunch on excursion days.

	<u>Fee</u>	<u>Time</u>
<b>Full Day</b>	\$225/week/child	9:00 a.m. - 4:00 p.m.
<b>Before Care</b>	\$ 20/week/child	7:00 a.m. - 9:00 a.m.
<b>After Care</b>	\$ 20/week/child	4:00 p.m. - 6:00 p.m.

## "SHREDDERS" TRAVELING SK8 CAMP (Intermediate/Advanced Level)

The camp includes activities at the Verdugo Skate Park, a visit to at least 2 other skate parks per week, swimming, and a midweek excursion. Some of the parks that campers may visit include Montclair, Oxnard, and Duarte Skate Parks. Snack and drinks will be provided. Participants must provide their own lunch daily. Skaters must provide their own skateboard, helmet, and elbow and knee pads. No instruction is provided for campers, and they must be able to skate unassisted in various parks to enjoy this camp. Weekly excursions are held on Wednesday. Campers should bring \$20 for lunch on excursion days.

	<u>Fee</u>	<u>Time</u>
<b>Full Day</b>	\$325/week/child	9:00 a.m. - 4:00 p.m.
<b>Before Care</b>	\$ 20/week/child	7:00 a.m. - 9:00 a.m.
<b>After Care</b>	\$ 20/week/child	4:00 p.m. - 6:00 p.m.

# Specialty Camps - Summer



## Maximum Potential Basketball Summer Break Camp

**Pacific Community Center**  
**501 S. Pacific Ave., Glendale, CA 91204**  
**For information, call (818) 548-4098**

Hoopapalooza is designed to help improve an individual's strength, knowledge, and overall development of basketball. Join this camp TODAY and you will be able to fulfill your aspirations. Learn the basics and advanced movements of the game. We will also cover dribbling, passing, shooting, and agility. ALL SKILL LEVELS ARE WELCOME!!!!

Mark Herring of Hoopapalooza Inc. will be the instructor. Coach Herring is a native of North Carolina and has worked with the likes of Coach K (Duke Univ and Mens National Basketball Team), Carmelo Anthony, Kobe Bryant and other NBA Stars. COME JOIN THE FUN!!!!

### 5-Day Camp

**Dates:** Monday - Friday, July 20-24, 2020

**Ages:** 8 - 16

	<u>Number</u>	<u>Fee</u>	<u>Time</u>
<b>Full Day</b>	162430-01	\$150/week/child	9:00 a.m. - 4:00 p.m.
<b>Before Care</b>	162402-01	\$ 20/week/child	7:00 a.m. - 9:00 a.m.
<b>After Care</b>	162403-01	\$ 20/week/child	4:00 p.m. - 6:00 p.m.



# Specialty Camps - Summer



## Challenger Summer Soccer Camps – International & Tiny Tykes

Glendale Sports Complex  
2200 Fern Lane, Glendale, CA 91208  
For Information, call (818) 937-7440

**Dates:** Monday - Friday

**Session 1:** June 15 - 19, 2020

**Session 2:** July 27 - 31, 2020

### International Soccer Camp

The Challenger International Soccer Camp will feature a number of elements in the curriculum and will also include a groundbreaking technology feature providing players with an app based platform which will help them prepare before camp, learn skills quicker and more efficiently during the camp. Fee includes Challenger International Camp T-shirt, soccer ball, player evaluation, soccer poster & 20 FREE Virtual Coaching Skills via the iChallenge App.

<u>Session 1</u>	<u>Age</u>	<u>Fee</u>	<u>Time</u>
141206-03	5-9	\$150	5:00 p.m. - 8:00 p.m.
141206-07	10-14	\$150	5:00 p.m. - 8:00 p.m.
<u>Session 2</u>	<u>Age</u>	<u>Fee</u>	<u>Time</u>
141206-06	5-9	\$150	5:00 p.m. - 8:00 p.m.
141206-08	10-14	\$150	5:00 p.m. - 8:00 p.m.

### TinyTykes Lions Soccer Camp

TinyTykes is an exciting program that teaches basic soccer skills while focusing on motor skill development, balance, coordination, concentration, listening skills and teamwork of players ages 3-5. Coaches will take your young player on a journey to imaginary destinations through storytelling, and games! Fee includes Challenger International Camp T-shirt, soccer ball, player evaluation, soccer poster & 20 FREE Virtual Coaching Skills via the iChallenge App.

<u>Session 1</u>	<u>Age</u>	<u>Fee</u>	<u>Time</u>
141206-01	3-5	\$70	4:00 p.m. - 4:30 p.m.
<u>Session 2</u>	<u>Age</u>	<u>Fee</u>	<u>Time</u>
141206-04	3-5	\$70	4:00 p.m. - 4:30 p.m.

[www.glendaleca.gov/parks](http://www.glendaleca.gov/parks)



# Aquatics – Program Information



## CITY OF GLENDALE'S PACIFIC COMMUNITY POOL IS OPEN YEAR ROUND

### Pacific Community Pool

509 S. Pacific Ave.  
Glendale, CA 91204

**(818) 937-7433**

**[www.GlendaleAquatics.com](http://www.GlendaleAquatics.com)**



**JOIN US FOR LESSONS, RECREATION & LAP SWIM!**



**Parks  
Make  
Life  
Better!**



@MyGlendaleParks

[www.GlendaleCA.gov](http://www.GlendaleCA.gov)

# Aquatics - Summer Registration Information

## Summer Aquatics Program

### GLENDALE RESIDENT REGISTRATION

Resident Registration for all Aquatics programs will begin on  
**Saturday, May 9, 2020**

Residents may register starting at 9:00 a.m. **IN PERSON** or **ONLINE!**

**In-Person** registration will be held at the Pacific Community Pool located at 509 S. Pacific Ave., Glendale, CA 91204 beginning at 9:00 a.m., until 12 noon.

**Online** registration is available at [www.myglendaleparks.com](http://www.myglendaleparks.com) beginning at 9:00 a.m. ***YOU MUST BE PRE-REGISTERED FOR RESIDENCY STATUS to register as a resident on May 9!***

If you wish to register online, please verify that your login information and password are up-to-date and you are able to log in prior to registration day. Due to the high volume of phone calls we are expecting for assistance, we highly encourage you to resolve all login issues before May 8, 2020.

**No phone registration is taken for Aquatics Programs.**

If you are experiencing difficulties registering online please call (818) 937-7433 for assistance.

***ALL CUSTOMERS WILL BE REQUIRED TO PROVIDE PROOF OF RESIDENCY IN ORDER TO RECEIVE PRIORITY REGISTRATION AND RESIDENT RATES.***

***PRE-REGISTERING FOR YOUR RESIDENCY STATUS IS REQUIRED ANNUALLY FOR ONLINE REGISTRATION AS A RESIDENT.***

***If a resident has not provided proof of residency before May 9, he/she must come in person beginning at 9:00 a.m. to registration on May 9 in order to register that day.***

**Pre-registration for residency status:** You may pre-register for residency status by emailing a copy of your utility bill or rental agreement to [cspcustomerservice@glendaleca.gov](mailto:cspcustomerservice@glendaleca.gov). Please include your full name, valid address, and a copy of the proof in the email. Emails will be reviewed within two (2) business days, and you will receive an email response confirming residency when it has been completed.

Residents are defined as any person who resides within the Glendale Unified School District boundaries. Residents must bring proof of residency in the form of a current utility bill showing at least two (2) months history, or a copy of a current, executed rental agreement. The utility bill or rental agreement must have the applicant's name, current date, and valid residential address printed on the front. Utility bills can be in the form of a water bill, power bill, or gas bill. Cell phone provider bills, credit card bills, television provider bills, bank statements, or any other bill not specified will not be accepted as proof of residency.



# Aquatics - Summer Registration Information

## Summer Aquatics Program

You may also pre-register for residency status during business hours  
at any of the following locations:

Adult Recreation Center  
201 E. Colorado Street.  
Glendale, CA 91205  
(818) 548-3775

Customer Service Office  
1401 N. Verdugo Rd.  
Glendale, CA 91208  
(818) 548-2752

Glendale Sports Complex  
2200 Fern Lane  
Glendale, CA 91208  
(818) 937-7440

Maple Park Community Center  
820 E. Maple St.  
Glendale, CA 91205  
(818) 548-3694

Pacific Community Center  
501 S. Pacific Ave  
Glendale, CA 91204  
(818) 548-4098

Sparr Heights Community Center  
1613 Glencoe Way  
Glendale, CA 91208  
(818) 548-2188

### GENERAL REGISTRATION

General Registration opens for everyone beginning on  
Monday, May 11, 2020

You may register in person or online beginning at 9:00 a.m.

Online: Visit [www.myglendaleparks.com](http://www.myglendaleparks.com)

*Please note that Glendale residents will not receive the resident rates unless they have pre-registered for your residency status. Non-verified residents who choose to register online on or after May 11 and pay the non-resident rates will not be provided a refund for any non-resident rates already paid.*

**In-Person:** Please visit any of the above locations to register in person from May 11 through May 22. Beginning May 26, registration will only be taken online or at Pacific Community Pool. Please visit [www.glendaleaquatics.com](http://www.glendaleaquatics.com) for specific hours of operation at the pool site.

### Payment Methods

Payment for registration in person: Cash, Check, or Credit Card\*

Payment for registration online or over the phone: Credit Card\*

\*The City of Glendale charges a non-refundable 2.5% service fee for all credit card transactions.

# Aquatics - Summer Program Information

## *Summer Aquatics Program*

For program descriptions, lesson times, and fees, please visit our website at [www.glendaleaquatics.com](http://www.glendaleaquatics.com) or call (818) 937-7433. Pool and wading pool locations are subject to closure during inclement weather conditions and/or in the event of water contamination.

### **PACIFIC POOL**

Join us for our Summer 2020 Aquatics Program, beginning on May 25, 2020, at the Pacific Community Pool, 509 S. Pacific Ave., Glendale, CA 91204

**Dates: May 25 – August 23, 2020**

#### **Programs/Events:**

- Recreational swim
- Instructional swim lessons for children and adults
- Glendale Gators Swim Club
- Glendale Polo Bears Water Polo Team
- Junior Lifeguard Academy
- Lap swim
- Special aquatics events

### **WADING POOLS**

Free fun in the sun for children 8 years of age and younger. Parent participation is required. Inflatables and pool toys will only be allowed at the discretion of the lifeguard on duty. In the event of maximum capacity being reached, children will be allowed access to the pool on a rotating schedule.

**Dates:** June 15 – August 16, 2020

**Hours:** Monday through Thursday 12:00 p.m. - 6:00 p.m.  
Friday, Saturday, and Sunday, 1:30 p.m. - 6:30 p.m.

#### **Locations:**

**Brand Park**, 1601 W. Mountain St.  
**Wednesday & Saturday**

**Dunsmore Park**, 4700 Dunsmore Ave.  
**Thursday & Sunday**

**Glenoaks Park**, 2531 Glenoaks Blvd.  
**Monday & Saturday**

**Fremont Park**, 600 W. Hahn Ave.  
**Tuesday & Sunday**

**Palmer Park**, 610 E. Palmer Ave.  
**Friday & Saturday**

Wading pools are available for private rentals outside of the scheduled hours of operation, May through September, depending on facility and staff availability.

- The rental fee is \$100 for the first hour of swim time.
- There is a \$25 fee for each additional hour of swim time.
- One lifeguard is included in the rental fee.

For information and booking, call (818) 937-7433.

[www.glendaleca.gov/parks](http://www.glendaleca.gov/parks)



# Aquatics – Breakthrough Sports



In partnership with the City of Glendale Aquatics Program, Breakthrough Sports is proud to offer the following adult aquatics classes at Pacific Community Pool, 509 S. Pacific Ave., Glendale, CA 91204. To register, visit Pacific Community Pool to purchase a pass. For more information, please call (818) 471-2411 or (818) 937-7433.

## **Masters Adult Swim Training**

Receive individual instruction, stroke correction for efficiency, and injury prevention & variable swimming training. Two groups offered, distance free training & stroke mix and sprints.

**Days:** Every Tuesday & Thursday

**Times:** 7:00 a.m. – 8:00 a.m.  
12:00 p.m. – 1:00 p.m.

**Fees:** Per Day- \$10  
Per Week- \$18  
Per Month- \$70

## **Water X-Fit**

An elite training program offering group instruction with a CrossFit style of workout done in the pool and on the pool deck with H.I.I.T. Anaerobic Training Program.

**Days:** Every Tuesday & Thursday

**Times:** 8:00 a.m. – 9:00 a.m.  
1:00 p.m. – 2:00 p.m.

**Fees:** Per Day- \$10  
Per Week- \$18  
Per Month- \$70

## **Aquacise**

Receive group instruction, perform stationary water exercise and shallow light & advanced classes. Classes are taught by courteous and professional trainers.

**Days:** Every Tuesday & Thursday

**Times:** 9:00 a.m. – 10:00 a.m.

**Fees:** Per Day- \$7  
Per Week- \$12  
Per Month- \$45



# Splash Pads

## *Splash Pads*

Splash pad water features will be open this summer! These are free water features for children, and are available to any park visitors.

**Dates/Hours:** May 22 - September 18, 2020  
11:00 a.m. - 6:00 p.m.  
Monday - Sunday (Daily)

September 19 - October 25, 2020  
11:00 a.m. - 6:00 p.m.  
Saturdays & Sundays only

**Locations:** Cerritos Park  
3960 San Fernando Rd.  
Glendale, CA 91204

Pacific Park  
501 S. Pacific Ave.  
Glendale, CA 91204



[www.glendaleca.gov/parks](http://www.glendaleca.gov/parks)



# Glendale Youth Alliance



Make a difference in our community by investing in our local youth and hiring through GYA!

## Business Owners

**Save Money for Your Business**



**FIVE GREAT REASONS**  
To Hire Through The Glendale Youth Alliance



**Applying is Quick and Easy!**

Complete the Glendale Youth Alliance Position Request form on the back of this flyer and mail to:  
Laura Isaacs at The Verdugo Jobs Center at 1255 S. Central Ave. Glendale CA 91204



For more information contact Laura Isaacs at (818) 937-8057 • [Lisaacs@GlendaleCA.gov](mailto:Lisaacs@GlendaleCA.gov)  
A Partnership Between Government, Education, Business & Community • Providing Employment Opportunities For Youth • A California Nonprofit Corporation • Tax ID# 95-4453385  
[www.Glendaleyouthalliance.org](http://www.Glendaleyouthalliance.org)

## Need additional help with your operations?

Hire through the GREAT program, and we can place an employee in a short time frame. It's easy and hassle free. GYA will provide pre-screened youth, cover the workers' compensation insurance and payroll. Your business will be billed bi-monthly for the youth wages. Call us today at (818) 937-8056.

For more information about GYA programs, please call (818) 937-8073, or visit us at [www.glendaleyouthalliance.org](http://www.glendaleyouthalliance.org).

Like us on Facebook and stay connected!

## Private Property Owners

**DON'T BE A VICTIM OF THE NEXT UNEXPECTED DISASTER!**  
Take action today!!! Hire participants from the Glendale Youth Employment Partnership to clear dirt, debris and vegetation from drainage ditches, channels and swells on your property. The youth can also place sandbags according to your direction.



**GYA**  
Glendale Youth Alliance, Inc.  
Making a difference

For more information, or to get a free estimate, Please Call (818) 548-3727

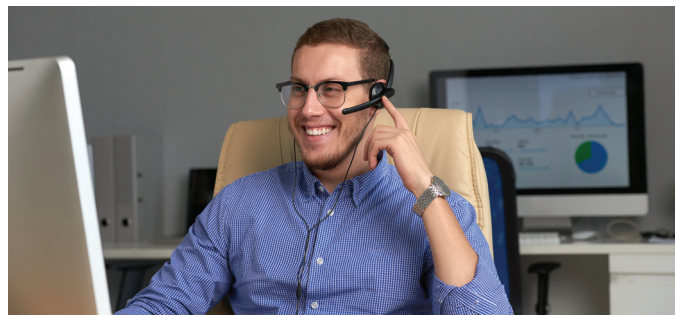
**HIRE our YOUTH! & invest in our FUTURE!**

Hire our supervised teams to perform hillside brush clearance on your property for a reasonable fee. GYA teams can also be hired for other general labor tasks. All work teams are fully insured, supervised and have their own tools and transportation. Reasonable Prices! Quality of work guaranteed!

### Services Available:

- Hillside clearance
- Yard maintenance
- Landscaping
- Brush abatement & clearance
- Property clean up and general labor tasks
- Mudslide prevention work

For a free estimate, call (818) 548-3727.





# Youth & Family Services

## YOUTH & FAMILY SERVICES PROGRAM

Pacific Community Center, 501 S. Pacific Ave., Glendale, CA 91204

Hours: Monday - Friday, 9:00 a.m. - 6:00 p.m. For more information, call (818) 937-7247.

The Youth & Family Services Program is designed to provide free information and referral services to at-risk youth and their families. The program supports the family unit by providing guidance in decision-making and connecting individuals with supportive services in the community.

### Eligibility:

Youth 13 - 17 years of age and young adults 18 - 21.

No income or residency requirements.

Self-referrals and referrals from local agencies are accepted.

### **Services provided:**

Information & referral, transportation support, utility assistance, connecting individuals to community providers regarding a variety of social issues which include, but are not limited to: employment, community service, health & wellness, housing/unstable living situations, and legal matters.

Juvenile Ultimatum Service Training (J.U.S.T) - A service component that provides youth the opportunity to complete mandated community service hours through a balanced and restorative justice, community service learning, community protection and competency development process.

## GLENDALE TEEN NIGHT OUT



Glendale Teen Night Out is designed to provide FREE activities that include billiards, ping pong, karaoke, PS4, and educational workshops. Workshops cover topics that include teen vaping, cyberbullying, health and wellness, and many others for teens ages 13-17. Light refreshments provided.

Community Center Youth Activity Card required to participate.  
Youth Activity Cards are FREE.

For more information, please call (818) 937-7243 or (818) 937-7246

**Location:** Pacific Community Center  
501 S. Pacific Ave.  
Glendale, CA 91204

**Day:** Every Other Friday

**Time:** 5:00 p.m. - 9:00 p.m.

# Youth & Family Services



Community Services  
& Parks

## Recycling for Teens

Presented by:

**Gerald Mendoza**

Glendale Public Works/Integrated Waste Section

**Friday, March 27, 2020 at 6:00 pm**

**Pacific Community Center  
501 S. Pacific Ave., Glendale, CA 91204**



This teen night out workshop will focus on teens learning the importance of recycling and reducing waste. Everyone should play a part in helping to protect this beautiful planet, including teenagers. In addition to teaching teens to recycle, we will encourage our teens to "go green" by getting creative and finding new purposes for used household items.

**For more information call (818) 937-7247.**

**Parks  
Make  
Life  
Better!**



**@MyGlendaleTeens #MyGlendaleTeens**



REASONABLE ACCOMMODATIONS WILL BE MADE UPON REQUEST. PLEASE NOTIFY US WITHIN 72 HOURS PRIOR TO EVENT DATE.

**Spring 2020 Leisure Guide**

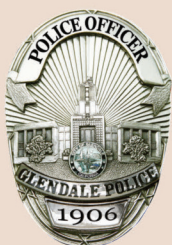


# Youth & Family Services



Community Services  
& Parks

## Safety in Schools and Community Centers



Friday, April 10, 2020 - 6:00 p.m.

Presented by Officer Varooj Karibyan  
Glendale Police Department

Pacific Community Center  
501 S. Pacific Ave., Glendale, CA 91204

For more information, call (818) 937-7247

This teen night out workshop will focus on staying safe at school and in community centers during an active shooter situation. Schools and community centers should be safe places for everyone. Unfortunately, that isn't always the case. It's vital that schools and community centers be well-prepared for all kinds of safety incidents, including the possibility of an active shooter on campus or in the facility.



Parks  
Make  
Life  
Better!



@MyGlendaleTeens #MyGlendaleTeens



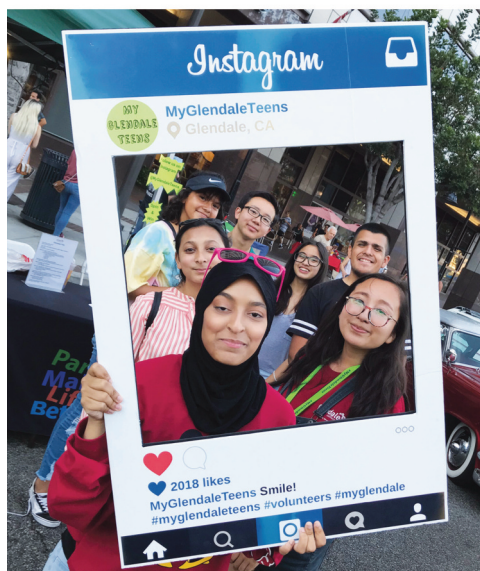
REASONABLE ACCOMMODATIONS WILL BE MADE UPON REQUEST. PLEASE NOTIFY US WITHIN 72 HOURS PRIOR TO EVENT DATE.

[www.glendaleca.gov/parks](http://www.glendaleca.gov/parks)



# Youth & Family Services

**FOLLOW  
US ON**



**@MyGlendaleTeens**

## @MyGlendaleTeens On Instagram!

Follow us on Instagram to find out the latest information on volunteer opportunities, job opportunities, special events, educational workshops, and places for teens to hang out!

You can also receive the latest updates on the City of Glendale by following @MyGlendaleTeens.

For more information, please call (818) 937-7243 or (818) 937-7246.

## Become a Teen Volunteer

### Want to volunteer?

1. Are you at least 14 years old?
2. Can you commit to 50 hours per year?
3. Do you have one of the following forms of identification?
  - California Driver License
  - California Identification Card
  - U.S. Passport
  - Military Identification Card
  - Green Card
4. Can you volunteer on weekends?

If you answered yes to all of the above, please call (818) 937-7243 or (818) 937-7246 to schedule an appointment.



# Drop-In Programs



Community Services  
& Parks

Library, Arts  
& Culture

## Storytime at Maple Park

February 12, March 11, April 8, and May 13, 2020

**10:00 a.m. - 10:30 a.m.**

Come to Maple Park Community Center and we will bring the library to you!  
Storytime is offered on the 2<sup>nd</sup> Wednesday of each month during the  
Tot-Time program at Maple Park Community Center.



Maple Park Community Center Gymnasium, 2nd Floor  
820 E. Maple Street, Glendale, CA 91205

**Parks  
Make  
Life  
Better!**



REASONABLE ACCOMMODATIONS WILL BE MADE UPON REQUEST. PLEASE NOTIFY US WITHIN 72 HOURS PRIOR TO EVENT DATE.

[www.glendaleca.gov/parks](http://www.glendaleca.gov/parks)

# Drop-In Programs

## YOUTH PROGRAMS

### Tot Time

Tot time is a FREE drop-in program for preschoolers (ages 5 and under) and their parents. The center provides play equipment and toys while parents provide the supervision. No registration required.

**Location:** Maple Park Community Center, 820 E. Maple St., Glendale, CA 91205  
**Days:** Mondays and Wednesdays  
**Time:** 10:00 a.m. - 12:00 p.m.

Pop-up Storytime is offered the 2nd Wednesday of every month from 10:00 a.m. - 10:30 a.m.

**For program information, please call (818) 548-3694.**

**Location:** Pacific Community Center, 501 S. Pacific Ave., Glendale, CA 91204  
**Days:** Tuesdays and Thursdays  
**Time:** 10:00 a.m. - 12:00 p.m. (canceled on 2/25/20, 3/3/20 & 5/14/20)

Pacific Park Library offers stories and crafts on Thursdays from 10:30 a.m. - 11:00 a.m.

**For program information, please call (818) 548-4098.**

### Maple Park and Sparr Heights After School Club

The After School Clubs at Maple Park and Sparr Heights Community Centers are free and fun drop-in after school programs for children ages 8 to 17. Recreation Leaders provide general supervision and programming. Maple Park Community Center offers a recreation room with foosball, ping pong, air hockey, and other gaming activities. There is a computer lab with internet and video games. There is also a full-court gymnasium which offers drop-in basketball for youth. Sparr Heights Community Center offers a lot of activities within the center including Table Tennis, Wii, Karaoke, Billiards, and other gaming activities. The entire center has FREE WiFi. Our Garden Room and South Patio are excellent locations to do homework.

**Location:** Maple Park Community Center, 820 E. Maple St., Glendale, CA 91205  
**Days/Time:** Monday through Friday, 2:00 p.m. - 5:00 p.m.

#### Spring Break Extended Hours

**Dates:** March 16 - March 20, 2020  
**Days/Time:** Monday through Friday, 12:30 p.m. - 6:00 p.m.

**For program information, please call (818) 548-3694.**

**Location:** Sparr Heights Community Center, 1613 Glencoe Way, Glendale, CA 91208  
**Days/Time:** Tuesdays, 3:00 p.m. - 5:00 p.m.  
Wednesdays & Thursdays, 3:00 p.m. - 6:00 p.m.  
(Closed March 16-20, 2020, due to Sparr-Tacular Spring Break Camp.)

A responsible adult/guardian must accompany all children under eight (8) years of age. This program is designed to provide supplemental activities for your child after school, and not to provide childcare.

**For more information, please call (818) 548-2187.**



# Drop-In Programs

## **THERAPEUTIC RECREATION FOR YOUTH AND ADULTS**

Maple Park Community Center, 820 E. Maple St., Glendale, CA 91205  
For program information, please call (818) 548-3783.



### **Get Fit**

Get Fit is a free program designed to improve the health status of adults with intellectual disabilities by focusing on nutrition, healthy meal planning, monthly weigh-ins and measurements, stretching and conditioning. Activities are age and skill appropriate.

**Day:** Mondays

**Time:** 5:00 p.m. – 7:00 p.m.

### **Club Maple**

Club Maple is a free program open to adults with intellectual disabilities which provides an opportunity for individuals to experience positive, healthy, recreational, cultural, educational, and social experiences. Activities are age and skill appropriate.

**Day:** Thursdays

**Time:** 5:30 p.m. - 8:00 p.m.

## **Maple Inclusive Play Day**

Maple Inclusive Play Day (MIP Day) creates an opportunity for families with children of all abilities to come to the park, network with each other and allow their children to socialize, all centered around the new Shane's Inspiration all-inclusive playground. Crafts appropriate to all abilities will be available.

**Day:** Third Saturday of each month

**Dates:** March 21, 2020, April 18, 2020, May 16, 2020

**Time:** 11:00 a.m. - 1:00 p.m.

**We are recruiting volunteer fitness, wellness, and nutrition instructors.  
For information, please call (818) 548-3783.**

### **SPECIAL NEEDS ACCOMMODATIONS**

The Community Services & Parks Department will provide any reasonable accommodation upon request. Please contact us at (818) 548-3783 at least 72 hours prior to the start of the event.



# Trails & Open Space Programs

## VOLUNTEER WORKDAYS

For information, please call (818) 548-3795.

### RIVERWALK WORKDAYS

Glendale Narrows Riverwalk  
Corner of Paula Ave. and Garden St.  
Saturdays: March 14, 2020 | May 16, 2020  
8:00 a.m. – 12 noon

Join us down by the riverside as we work to remove invasive plants from the landscaped areas along the L.A. River. Participants are asked to wear sturdy shoes, protective clothing, and a hat. We'll provide tools, gloves, drinks and snacks. Families, individuals, clubs, and students needing community service hours are welcome. Groups of 10 or more, please RSVP by calling (818) 548-3795. In case of rain, this workday will be cancelled.

### WILDERNESS WORKDAYS

Deukmejian Wilderness Park  
3429 Markridge Rd.  
Saturdays: March 21, 2020 | April 18, 2020 | May 9, 2020  
8:00 a.m. – 12 noon

Help us water our Douglas Firs and Coast Live Oaks, assist with trail repairs, and remove invasive species from the park. This program is perfect for students who need community service hours. Community and youth organizations are welcome. Please wear sturdy shoes, protective clothing and a hat. Drinks and snacks will be provided. Groups of 10 or more, please RSVP by calling (818) 548-3795. In case of rain, this workday will be cancelled.

## INTERPRETIVE HIKES AND PROGRAMS

For information or to RSVP, please call (818) 548-3795.

### FRIDAY NIGHT LECTURE, "NOT GARDENS BUT GUARDIANS – THE RISE OF THE ENLIGHTENED YARD"

Deukmejian Wilderness Park  
3429 Markridge Rd.  
Friday: March 27, 2020  
6:30 p.m. – 8:30 p.m.

Gardens of the 21st Century must evolve to become, in the words of Mary Reynolds, "The Guardians", of our native lands, sanctuaries for the plants, birds, insects and the animal species that our exotic landscapes have driven out. Learn how your garden can help to preserve and protect our remaining natural resources. David Newsom, founder of "The Wild Yards Project," and a self-taught naturalist, will be our speaker for the evening. This program is recommended for ages 14 and older. This event is FREE, but space is limited. You must call us at (818) 548-3795 to reserve your spot.

### OBSERVE, DISCOVER, JOURNAL!

Brand Library Courtyard  
1601 W. Mountain St.  
Saturday: March 28, 2020  
9:00 a.m. – 12 noon

Nature journals are an important tool for scientists and artists in their quests to document and understand the world around them. Come learn how journals are used, and make your own travel style journal. We'll then take a short walk around the picturesque library grounds to use your new journals. This event is FREE, but space is limited. You must call us at (818) 548-3795 to reserve your spot. This program is in partnership with Brand Associates.



# Trails & Open Space Programs

## **SALAMANDERS, SNAKES, AND LIZARDS, OH MY!**

Deukmejian Wilderness Park

3429 Markridge Rd.

Saturday: April 4, 2020

9:00 a.m. – 12 noon

Can you tell the age of a rattlesnake by counting its rattles? Do salamanders have lungs? Join us for a lecture and hike to learn about the “herps” (snakes, lizards, frogs and more) that inhabit Southern California. Chris DeGroof from the Southwestern Herpetologists Society will be our host as he shares his passion for these animals. The lecture starts at 9:00 a.m. and will be followed by a moderately easy 1.5 mile hike with several stops to catch and identify some of our local herps. This event is FREE, but space is limited. You must call us at (818) 548-3795 to reserve your spot.

## **FRIDAY NIGHT LECTURE, “BUTTERFLIES AND THE PLANTS THEY LOVE!”**

Deukmejian Wilderness Park

3429 Markridge Rd.

Friday: April 10, 2020

6:30 p.m. – 8:30 p.m.

Betina Loudermilk of Betina’s Butterfly Garden will be our guest lecturer on “Butterflies and the Plants They Love”. Learn all about the native California plants that butterflies love to eat and call home. This program is recommended for ages 14 and older. This event is FREE, but space is limited. You must call us at (818) 548-3795 to reserve your place.

## **LOCAL COLOR: DYEING WITH PLANTS**

Brand Library Courtyard

1601 W. Mountain St.

Saturday: April 11, 2020

9:00 a.m. – 12 noon

Come explore the hidden color in our landscape by learning about plants and their potential for dyeing. We will start with a short lecture on dyeing including how to forage responsibly and how to broaden your color palette using modifiers. We’ll then use simple tie-dye techniques to produce one-of-a-kind wearable art. Participants will come away with a patterned, finished textile and instructions on how to repeat the process at home. All materials provided. This event is FREE, but space is limited. You must call us at (818) 548-3795 to reserve your spot. This program is in partnership with Brand Associates.

**Please remember to call (818) 548-3795 to RSVP or for more information.**

All Trails & Open Space programs are sponsored by the Glendale Parks & Open Space Foundation.

JOIN OUR E-MAIL LIST!

Are you on the Trails & Open Space e-mail list? We send out flyers and calendars for all our events, programs, and meetings. Just email us at [TrailOpenspace@GlendaleCA.gov](mailto:TrailOpenspace@GlendaleCA.gov), and tell us you want to be added to the Trails & Open Space list! We never make your e-mail address available to any other company or organization.



# Verdugo Skate Park Programs

## VERDUGO SKATE PARK

Verdugo Park (south end)  
1621 Cañada Blvd.  
Glendale, CA 91208  
(818) 548-2786

### HOURS OF OPERATION:

#### Year Round Hours:

Monday – Friday:	4:00 p.m. - 9:00 p.m.	(for all ages)
Saturday:	10:00 a.m. - 12:00 p.m.	(14 & under*)
	12:00 p.m. - 9:00 p.m.	(for all ages)
Sunday:	10:00 a.m. - 9:00 p.m.	(for all ages)

*\*From 10:00 a.m.-12:00 p.m. on Saturdays, parents may skate with their children for instructional purposes. This is at the safety discretion of skate staff.*

### FEES:

	Youth (17 & Under) & Resident Adults (18 & Over)	Non-Resident Adults (18 & Over)
Daily Entry	Free	\$ 4
Monthly Pass	Free	\$40
Annual Pass	Free	\$75

### FEATURES:

15,000 square foot concrete facility: 6 - 9 foot Clover Bowl with 11 foot Over-Vert section, 6 - 10 foot Kidney Pool, Street Plaza with rails and ledges, and a Snake Run that empties into a 9 foot bowl with a Loveseat.

**ALL PERSONS ENTERING THE PARK MUST WEAR A HELMET, KNEE PADS AND ELBOW PADS.**

All skaters must have a valid release of liability form on file.  
(Youth ages 17 and under are required to have parent/guardian signature.)

**BMX bikes, scooters or other coasting devices are NOT permitted.**

Follow us on Twitter @verdugosk8park



# Verdugo Skate Park Programs



1621 Cañada Blvd.  
Glendale, CA 91208  
(818) 548-2786

## FRIDAY NIGHT LIGHTS

Enjoy some of the newest skateboard videos on a big projection screen. There will be a raffle and one grand prize given away monthly. Free snack with the purchase of a raffle ticket. Free admission. *Dates and times are subject to change.*

**Day:** March 20, April 17, May 15, 2020  
**Time:** 5:30 p.m. - 8:30 p.m.

## BEGINNING SKATE CLASSES

Skaters will be introduced to the following fundamentals: Safety procedures, which involve the proper use of safety equipment; falling techniques; and basic skills like balance, stance, pushing, and turning. There is a minimum of three participants and a maximum of eight participants per class. **All skaters must provide their own helmet, skateboard, and elbow and knee pads.**

### 6 WEEKS

**Fee:** \$100  
**Dates:** Sundays, April 5 - May 17, 2020 (No class April 12)  
**Times:** 9:00 a.m. - 10:00 a.m.

## INTERMEDIATE SKATE CLASSES

Skaters will continue to master the following fundamentals: Safety procedures, which involve the proper use of safety equipment; falling techniques; basic skills like balance, stance, pushing, and turning. They will also work on ollieing and begin to learn tricks. There is a minimum of three participants and a maximum of eight participants per class. **All skaters must provide their own helmet, skateboard, and elbow and knee pads.**

### 6 WEEKS

**Fee:** \$100  
**Dates:** Saturdays, April 4 - May 16, 2020 (No class April 11)  
**Times:** 9:00 a.m. - 10:00 a.m.

## DROP-BY SKATE CLASSES

We offer scheduled drop-by beginning skate classes. Beginners will learn the proper stance and balance. Registration for drop by skate classes will be accepted **ONLY** at the Verdugo Skate Park on the day class is offered on a first come, first serve basis. There is a maximum of five participants per class. **All skaters must provide their own helmet, skateboard, and elbow and knee pads.**

**Fee:** \$20 per class  
**Days:** Mondays, Wednesdays & Fridays  
**Times:** 4:00 p.m. - 5:00 p.m.



# Contract Class Information

## SPRING 2020 SESSION DATES

Enrollment begins: February 24, 2020

Classes begin: March 23, 2020

Last day to enroll for open classes: April 4, 2020

(Classes that do not meet the minimum number of students may be cancelled.)

**See Page 61 for Registration Information, or call (818) 548-2184.**

## CLASS LOCATIONS

### **Adult Recreation Center (ARC)**

Central Park Complex  
201 E. Colorado St.  
Glendale, CA 91205

### **Crescenta Valley High School**

2900 Community Ave/  
La Crescenta, CA 91214

### **Glendale Community College**

1500 N. Verdugo Rd.  
Glendale, CA 91208

### **Griffith Manor Community Building & Park**

1551 Flower St.  
Glendale, CA 91201

### **Maple Park Community Center**

820 E. Maple St.  
Glendale, CA 91205

### **Scholl Canyon Golf & Tennis**

3800 E. Glenoaks Blvd.  
Glendale, CA 91206

### **Brand Studios**

1601 W. Mountain St.  
Glendale, CA 91201

### **Deukmejian Wilderness Park**

3429 Markridge Rd.  
Glendale, CA 91214

### **Glendale Sports Complex**

2200 Fern Lane  
Glendale, CA 91208

### **Hoover High School**

651 Glenwood Rd.  
Glendale, CA 91202

### **Montrose Park**

3529 Clifton Pl.  
Glendale, CA 91208

### **Sparr Heights Community Center**

1613 Glencoe Way  
Glendale, CA 91208

### **Chevy Chase Library**

3301 E. Chevy Chase Dr.  
Glendale, CA 91206

### **Dunsmore Community Building & Park**

4700 Dunsmore Ave.  
La Crescenta, CA 91214

### **Glorietta Park**

2801 N. Verdugo Rd.  
Glendale, CA 91208

### **Joe Bridges Clubhouse**

(In Glenoaks Park)  
2531 E. Glenoaks Blvd.  
Glendale, CA 91206

### **Pacific Community Center & Pool**

501 - 509 S. Pacific Ave.  
Glendale, CA 91204

### **Verdugo Skate Park**

1621 Cañada Blvd.  
Glendale, CA 91208



# Youth Classes

## Youth Art

### BASICS OF FIGURE DRAWING

Classes include learning the basic anatomical proportions of human figures and gesture drawings. Students will draw from life by taking 3-5 minute turns posing. Figure development will move on to cartooning and caricatures. Various drawing materials will be used in a variety of formats and papers from small to large. Parents are also encouraged to enroll.

**\$20 material fee is payable to instructor on first day of class. No class May 25, 2020. Last class will be held on Monday, June 1, 2020.**

<b>10 Weeks</b>		<b>Fee: \$100</b>	<b>Instructor: Ann Marie Smith</b>
Ages 12 & up	430501-02	Brand Studios	3/23 M 5:30 p.m. - 6:30 p.m.

### DRAWING, PAINTING AND MIXED MEDIA

Classes include basic drawing, 3D shapes and shading in tonal drawings and compositions of still life set-ups. Color theory will be discussed and used in projects with a focus on Master Artist work for reference. Various art media will be used in various formats and surfaces. Art Show on final day of class.

**\$20 material fee is payable to instructor on first day of class.**

<b>10 Weeks</b>		<b>Fee: \$100</b>	<b>Instructor: Ann Marie Smith</b>
Ages 6 - 14	430501-03	Chevy Chase Library	3/25 W 5:30 p.m. - 6:30 p.m.

### DEMONSTRATION PAINTING

Instructor will demonstrate painting still life set-ups, landscapes and portraits in various styles and mixed media to model techniques for students to create their own paintings. Master Artists' work and photo references on composition, color harmonies and new approaches will be explored. Canvas and watercolor paper will be used. Student Art Show on the last day of class.

**\$20 material fee is payable to instructor on first day of class.**

<b>10 Weeks</b>		<b>Fee: \$100</b>	<b>Instructor: Ann Marie Smith</b>
Ages 6 - 14	430501-01	Brand Studios	3/26 Th 5:00 p.m. - 6:15 p.m.

### PARENT AND CHILD ART

Adult and child share creative time together using paint, paper, clay and found objects. Students will learn basic art techniques and vocabulary while painting, printmaking, clay making, creating collage and fantasy crafting. The instructor encourages freedom of expression and creativity. Classes also include games, songs, sharing books, story time, and show and tell.

**\$10 material fee is payable on the first day of class.**

<b>8 weeks</b>		<b>Fee: \$85</b>	<b>Instructor: Aleka Corwin</b>
Ages 2 - 5	430502-01	Brand Studios	3/26 Th 11:00 a.m. - 12:00 p.m.

# Youth Classes

## Sylvan Learning

### CREATIVE CODING

Kids will learn coding skills with creative projects in art, music & math.

<b>6 weeks</b>		<b>Fee: \$149</b>	<b>Instructor: Sylvan Learning</b>		
Ages 8-14	430906-01	Brand Studios	3/25	W	3:30 p.m. - 4:30 p.m.

### SAT PREP BOOTCAMP

Teens get the skills, strategies and practice to score high on the SAT.

<b>6 weeks</b>		<b>Fee: \$199</b>	<b>Instructor: Sylvan Learning</b>		
Ages 14 - 18	430906-01	Brand Studios	3/25	W	5:00 p.m.- 6:00 p.m.



# Youth Sports

## MAXIMUM POTENTIAL BASKETBALL

Hoopapalooza is designed to help improve an individual's strength, knowledge, and overall development of basketball. Join this class TODAY and you will be able to fulfill your aspirations. Learn the basics and advanced movements of the game. We will also cover dribbling, passing, shooting, and agility. ALL SKILL LEVELS ARE WELCOME!!!!

Mark Herring of Hoopapalooza Inc. will be the instructor. Coach Herring is a native of North Carolina and has worked with the likes of Coach Krzyzewski ("Coach K", Duke University's Men's Basketball Team), Kobe Bryant, Carmelo Anthony, and other NBA Stars. COME JOIN THE FUN!!!!

**6 weeks**

Ages 8 - 16

460601-01

**Fee: \$150**

Pacific CC

**Instructor: Mark Herring**

3/26 Th 6:00 p.m. – 7:00 p.m.



## YOUTH TENNIS CLASSES

For program information, call (818) 937-7440.

To register, call (818) 548-2184.

Students will learn stroke development, drills, and singles and doubles strategy.

Bring water and a tennis racket to each class meeting. In addition, please bring \$5 cash equipment fee; exact change only.

**LOCATIONS:** Montrose Park, 3529 Clifton Pl., Glendale, CA 91208  
Scholl Canyon Golf & Tennis, 3800 E. Glenoaks Blvd., Glendale, CA 91206

### 8 WEEKS

**FEE:**

\$ 75 Young Beginners  
\$100 Beginning & Intermediate

**AGES: 4 – 7**

**AGES: 8 – 17**

**DATES:**

Tuesdays, March 31 - May 19, 2020  
Thursdays, April 2 - May 21, 2020  
Saturdays, March 28 - May 16, 2020

**SKILL LEVEL: YOUNG BEGINNERS (4-7 years)**

<u>Number</u>	<u>Day of Week</u>	<u>Location</u>	<u>Time</u>
441102-01	Thursdays	Montrose Park	3:15 p.m. – 4:00 p.m.
441102-02	Saturdays	Scholl Canyon	1:15 p.m. – 2:00 p.m.

**SKILL LEVEL: BEGINNING (8-17 years)**

<u>Number</u>	<u>Day of Week</u>	<u>Location</u>	<u>Time</u>
441103-01	Tuesdays	Montrose Park	4:00 p.m. – 5:00 p.m.
441103-02	Thursdays	Montrose Park	4:00 p.m. – 5:00 p.m.
441103-03	Saturdays	Scholl Canyon	2:00 p.m. – 3:00 p.m.

**SKILL LEVEL: INTERMEDIATE (8-17 years)**

<u>Number</u>	<u>Day of Week</u>	<u>Location</u>	<u>Time</u>
441104-01	Tuesdays	Montrose Park	5:00 p.m. – 6:00 p.m.
441104-02	Thursdays	Montrose Park	5:00 p.m. – 6:00 p.m.



# Youth Sports

## YOUTH VOLLEYBALL CLASSES

Students will learn how to volley, pass, hit, serve, and more. Bring drinking water and come ready to have fun! Please note, start time is dependent upon gym availability due to school usage. Class may begin up to 30 minutes late and will extend up to 30 minutes on days where the school hosts volleyball matches (date TBA). If class begins more than 30 minutes late, the instructor will make arrangements to extend the class ending date to accommodate for lost class time. Class will conclude no later than 8:30 p.m. Up to two classes will be optional "observation classes" where the participants will have the opportunity to watch a Varsity high school volleyball match and discuss their observations with the instructor. No play will occur during these class sessions.

**LOCATIONS:** Crescenta Valley High School Gymnasium  
2900 Community Ave., La Crescenta, CA 91214

### 12 CLASSES

**FEE:** \$125

**DATES:** Tuesdays and Thursdays, March 24 - April 30, 2020

<u>Number</u>	<u>Class Title</u>	<u>Age</u>	<u>Time</u>
441701-01	Youth Volleyball (Grades 4 - 7)	9 - 12	6:30 p.m. - 8:00 p.m.
441701-02	Youth Volleyball (Grade 8)	13 - 14	6:30 p.m. - 8:00 p.m.



# Youth Sports



## BEGINNERS EDGE SPORTS TRAINING (BEST) CLASSES

For program information, call (818) 937-7440.

To register, call (818) 548-2184.

### BEST 3-SPORT MULTI-SPORT

(Soccer, Baseball/Softball, Basketball)

The 3-Sport program brings you multiple weeks of 3 fantastic sports: Soccer, Baseball/Softball & Basketball. We will teach your player how to kick and control a soccer ball, how to hit, catch, throw and run the bases, and basketball handling, dribbling, passing, and shooting. Our goal and focus is to maintain an energetic & highly active program that will teach, encourage and advance your young players regardless of their skill level. Please bring an age-appropriate soccer ball for the first week. A hitting tee is needed later in the session.

**LOCATION:** Verdugo Park (North End), Grass Area,  
1621 Cañada Blvd., Glendale, CA 91208

#### 7 CLASSES

**FEE:** \$119

**DAY/SESSION DATES:** Saturdays, March 28-May 16, 2020 (No class April 11)

<u>Number</u>	<u>Class Title</u>	<u>Age</u>	<u>Time</u>
440801-01	3-Sport	2 - 4	9:00 a.m. – 9:45 a.m.
440801-02	3-Sport	4 - 7	9:50 a.m. – 10:35 a.m.
440801-03	3-Sport	7 - 10	10:40 a.m. – 11:25 a.m.



### CHALLENGER SPORTS SPRING SOCCER

Join one of the largest fundamental soccer programs in Southern California. The Tiny Tykes program is a fantastic way to introduce your child to sport and caters to ages 2-5 years old!

Our soccer experts and child development professionals have designed an innovative curriculum that introduces your young soccer star to the basic skills needed in soccer as well as developing their motor, social, and psychological skills. All of our coaches are British, experts at working with

young children and will combine soccer with fun games, stories and music that keep your children entertained and enthused to return the next week.

Come join our Cubs and Lions Program and join Lenny the Lion, our mascot, in a wonderful soccer adventure. Plus not only will you get an amazing experience in soccer, you will also receive a FREE UNIFORM & BALL when you register! For more information and our coaching philosophy, or details of the curriculum, please visit our website: [www.challengersports.com](http://www.challengersports.com).

#### 8 WEEKS

**FEE:** \$100

**DATES:** Fridays, April 17 - June 5, 2020

**LOCATION:** Dunsmore Park, 4700 Dunsmore Ave., La Crescenta, CA 91214

<u>Number</u>	<u>Class Title</u>	<u>Age</u>	<u>Time</u>
441205-01	TinyTykes Cubs	2-3	9:30 a.m. - 10:15 a.m.
441205-02	TinyTykes Lions	4-5	10:30 a.m. - 11:15 a.m.

# Youth Sports

## KIDZ LOVE SOCCER

WWW.KIDZLOVESOCCER.COM



This instructional soccer experience includes age-appropriate activities, skill demonstrations, fun games, and instructional scrimmages conducted in a non-competitive, recreational format. This is perfect for first time players while being fun and engaging for kids with some experience. **Shin guards are required.**

**Excessive Heat and Rainout Hotline #: (888) 372-5803. Call this number up to 30 minutes prior to any scheduled class to verify class status.** If a class is cancelled due to weather and/or another City program, the class will be made up at the end of the session.

### 8 WEEKS

**FEE:** \$105

All participants will receive a soccer jersey.

**TUESDAY CLASS LOCATION:** Glorietta Park, 2801 N. Verdugo Rd., Glendale, CA 91208

**DAY/SESSION DATES:** Tuesdays, April 7 - May 26, 2020

<u>Number</u>	<u>Class Title</u>	<u>Age</u>	<u>Time</u>
441204-01	Soccer 2; Skillz & Scrimmage	7 - 10	4:00 p.m. – 4:45 p.m.
441203-01	Soccer 1; Technique & Teamwork	5 - 6	4:45 p.m. – 5:30 p.m.
441202-01	Tot/Pre Soccer	3.5 - 5	5:30 p.m. – 6:05 p.m.
441201-04	Mommy/Daddy/Me	2 - 3.5	6:15 p.m. – 6:45 p.m.

**SATURDAY CLASS LOCATION:** Glorietta Park, 2801 N. Verdugo Rd., Glendale, CA 91208

**DAY/SESSION DATES:** Saturdays, April 18 - June 13, 2020 (No class May 23)

<u>Number</u>	<u>Class Title</u>	<u>Age</u>	<u>Time</u>
441201-01	Mommy/Daddy/Me	2 - 3.5	9:00 a.m. – 9:30 a.m.
441201-02	Mommy/Daddy/Me	2 - 3.5	9:35 a.m. – 10:05 a.m.
441202-02	Tot Soccer	3.5 - 4	10:15 a.m. – 10:45 a.m.
441202-03	Pre Soccer	4 - 5	10:45 a.m. – 11:20 a.m.
441203-02	Soccer 1; Technique & Teamwork	5 - 6	11:20 a.m. – 12:05 p.m.



Spring 2020 Leisure Guide



# Adult Classes

## **ADULT FITNESS/WELLNESS & DANCE**

### **AIKIDO**

Aikido is a peaceful, yet powerful Japanese martial art. This class is designed to teach students how to use an opponent's energy to gain control of a situation using beautiful and circular techniques. Great emphasis is placed on motion and the dynamics of movement.

<b>10 Weeks</b>	<b>Fee: \$100</b>	<b>Instructor: Mark Adachi</b>	
460401-01	Pacific CC	4/1	M, Th Sat
			7:00 p.m. - 8:30 p.m. 10:00 a.m. - 11:30 a.m.

### **YOGA by Yoga Circle Downtown**



Postures (Asanas) stretch, tone and strengthen the entire skeletal system, working not only the body's frame, but the internal organs, glands and nerves as well. These postures are linked via a connective movement (Vinyasa) and powerful breath work. These breathing exercises (pranayama) refresh and cleanse the body and help to control the mind. The union (yoga) of these two forces (Asana and Pranayama), release physical and mental tension, liberating vast resources of energy with increased mental power, clarity and concentration. This practice, over time, will bring your being into peak physical and mental condition.

<b>10 Weeks</b>	<b>Fee: \$150</b>	<b>Instructor: Knekoh Fruge</b>	
430303-01	Chevy Chase Library	3/28	Sat
			9:00 a.m. - 10:00 a.m.

### **YOGA**

Enjoy an integrated approach to yoga combining the aspects of alignment and repetitive movement, coordinated with breath, to safely open the joints optimizing blood flow and oxygenation to the joints and organs to maintain and enhance good health. The class starts with a breathing meditation to transition from the everyday world into a calm state before starting the class. From there, we move on to seated classical yoga positions, kneeling and then standing positions. Class will end with a guided deep relaxation, developing a calm mental attitude. Be sure to bring a yoga mat and dress comfortably for a good stretch.

<b>8 Weeks</b>	<b>Fee: \$80</b>	<b>Instructor: Susan Quon</b>	
430302-01	Brand Studios	4/7	T
430302-03	Brand Studios	4/8	W
430302-02	Brand Studios	4/9	Th
			6:45 p.m. - 8:15 p.m. 10:30 a.m. - 12:00 p.m. 6:45 p.m. - 8:15 p.m.

### ***SPECIAL NEEDS ACCOMMODATIONS***

The Community Services & Parks Department will provide any reasonable accommodation toward the inclusion of a participant. Please contact the Therapeutic Recreation Program supervisor at (818) 548-3783 at least 72 hours prior to the start of the program. Ample time is required to determine the needs for each request.

### ***TEACHING OPPORTUNITIES***

Contractual Instructors are needed to teach professional-quality classes for all ages and interests at a wide variety of locations throughout the City of Glendale. **Contact:** Norma Mower, (818) 937-7216

# Adult Classes

## ADULT VISUAL ARTS

### WATERCOLOR FOR SERIOUS PAINTERS



This class is structured to teach basic principles of painting and design in watercolor. You will learn various watercolor skills and painting techniques. Weekly demonstrations and practice will aide you in gaining a mastery of the watercolor medium. Enthusiasm, plus basic watercolor skills and art materials, are required.

**A \$15 material fee for printed handouts is payable on the first day of class.**

**8 Weeks**

430101-01

430101-02

**Fee: \$95**

Brand Studios

Brand Studios

**Instructor: Peggy Reid**

3/24

T

9:00 a.m. - 12:00 p.m.

3/34

T

12:30 p.m. - 3:30 p.m.



### WATERCOLOR FRESH AND LOOSE

In this class, painters will explore breaking free of careful, timid techniques to create stronger, more effective visual statements. The emphasis will be toward fostering individual progress and developing each artist's unique voice. Participants of every skill or experience level are welcome.

**10 Weeks**

430102-01

430102-02

**Fee: \$90**

Brand Studios

Brand Studios

**Instructor: John Byram**

3/27

F

9:00 a.m. - 12:00 p.m.

3/27

F

1:00 p.m. - 4:00 p.m.

### MIXED MEDIA (Open Studio)

This class allows students to learn from each other developing new visions and exploring new methods by using water mediums such as gesso, ink, acrylic and pastels.

**8 Weeks**

430103-01

**Fee: \$65**

Brand Studios

**Instructor: No Instructor**

3/23

M

10:00 a.m. - 1:00 p.m.



# Adult Sports

For program information, call (818) 937-7440. To register, call (818) 548-2184.

## ADULT TENNIS CLASSES

The classes will include stroke development, drills, and singles and doubles strategy. Students should bring water, a tennis racket, and a \$5 equipment fee, cash only. Please bring exact change.

**8 WEEKS**                      **FEE: \$100**                      **AGES: 18+**  
**Session Dates:**              Tuesdays, March 31 - May 19, 2020  
   Thursdays, April 2 - May 21, 2020

**Locations:**                      **Montrose Park, 3529 Clifton Pl., Glendale, CA 91208**

**SKILL LEVEL: BEGINNING**

<u>Number</u>	<u>Day of Week</u>	<u>Location</u>	<u>Time</u>
441001-02	Tuesdays	Montrose Park	6:00 p.m. - 7:00 p.m.
441001-04	Thursdays	Montrose Park	6:00 p.m. - 7:00 p.m.

**SKILL LEVEL: INTERMEDIATE**

<u>Number</u>	<u>Day of Week</u>	<u>Location</u>	<u>Time</u>
441002-05	Tuesdays	Montrose Park	7:00 p.m. - 8:00 p.m.
441002-03	Thursdays	Montrose Park	7:00 p.m. - 8:00 p.m.



## Activity Card Fee Schedule:

Senior Activity Cards (60 years of age and older)	\$10/year
Adult Activity Cards (18 - 59 years old)	\$25/year

Cards may be purchased at one of the following locations:

- Adult Recreation Center, 201 E. Colorado St., Glendale, CA 91204
- Glendale Sports Complex, 2200 Fern Lane, Glendale, CA 91208
- Maple Park Community Center, 820 E. Maple St., Glendale, CA 91205
- Pacific Community Center, 501 S. Pacific Ave., Glendale, CA 91204
- Sparr Heights Community Center, 1613 Glencoe Way, Glendale, CA 91208

## ADULT OPEN PLAY BADMINTON

Join a sport that gives you a great aerobic workout! All skill levels are invited to participate!

**LOCATION #1:**                      **Glendale Community College (South Gym)**  
   1500 N. Verdugo Rd., Glendale, CA 91208

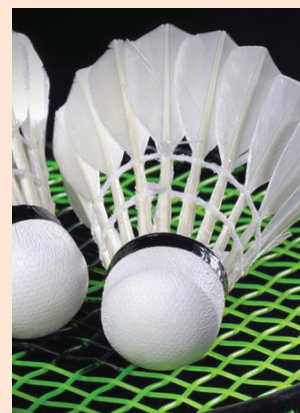
**Fee:**                                      *Parking is available in Lot A. Valid permit required.*  
   No daily fee. Activity Card is required (see fee schedule above).

**Dates/Times:**                      Mondays  
   November 18, 2019 – June 1, 2020, 7:00 p.m. - 10:00 p.m.  
   *Dates are subject to Glendale College availability.*

**LOCATION #2:**                      **Pacific Community Center Gym**  
   501 S. Pacific Ave., Glendale, CA 91205

**Fee:**                                      No daily fee. Activity Card is required (See fee schedule above.)

**Dates/Times:**                      Fridays, 6:00 p.m. - 10:00 p.m.    *(One Side Closed: 5/8/20 and 5/22/20)*





# Adult Sports



## ADULT DROP-IN BASKETBALL

Open play basketball is available to adults of all skill levels in our gyms at Maple Park Community Center and Pacific Community Center. All skill levels are welcome to drop-in for a good workout by playing pickup games. **Ask for the drop-in calendar from the front desk to know when drop-in goes dark due to facility reservations and special events. Drop-in calendar is subject to change without notice. Please contact the Community Center for an up-to-date schedule.**

<b>Fee:</b>	Free for Activity Card Holders (see fee schedule on pg. 58), \$2 for Non-Activity Card Holders		
<b>Location:</b>	<b>Maple Park Community Center</b> 820 E. Maple St., Glendale, CA 91205		
<b>Dates/Times:</b>	Monday through Friday Saturdays	4:00 p.m. - 5:00 p.m. 9:00 a.m. - 5:00 p.m.	
<b>Location:</b>	<b>Pacific Community Center</b> 820 E. Maple St., Glendale, CA 91205		
<b>Dates/Times:</b>	Mondays and Thursdays Saturdays (Closed: 2/20/20, 2/22/20, 2/24/20, 2/27/20, 2/29/20, 3/2/20, 3/7/20, 3/28/20, 4/18/20, 4/25/20, 5/2/20, 5/7/20)	5:00 p.m. - 8:00 p.m. 12:00 p.m. - 4:45 p.m.	

## ADULT OPEN PLAY VOLLEYBALL

<b>LOCATION #1:</b>	<b>Maple Park Community Center*</b> 820 E. Maple St., Glendale, CA 91205		
<b>Fee:</b>	Free for Activity Card Holders (see fee schedule on pg. 58) \$2 for Non-Activity Card Holders		
<b>Dates/Times:</b>	Tuesdays, 6:00 p.m. - 9:00 p.m. (Ask for the drop-in calendar at the front desk to know when drop-in goes dark due to private reservations or special events.)		
<b>LOCATION #2:</b>	<b>Hoover High School (Small/East Gym)*</b> 651 Glenwood Rd., Glendale, CA 91202		
<b>Fee:</b>	No daily fee. Activity Card is required (see fee schedule on pg. 58)		
<b>Dates/Times:</b>	September 9, 2019 - April 16, 2020, 8:00 p.m. - 10:15 p.m. April 20 - June 8, 2020, 8:30 p.m.- 10:15 p.m. (Closed: 2/10/20, 2/17/20, 2/20/20, 3/16/20, 3/19/20, 5/25/20) Dates are subject to Hoover High School availability		

*\*Release of liability form is due each calendar year. Maximum 42 person capacity per night. Teams will be established in groups of 6 based on the sign-in sheet.*



# Adult Sports



## MASTERS OPEN PLAY SOCCER (Ages 40+)

Get a healthy workout and meet new friends as you join other adult enthusiasts for casual pick-up games. This is a non-competitive, friendly play program. Pick-up games are available on Wednesday and Friday mornings.

**Fee:** Activity Card holders only. \$2 per player per day (see fee schedule on pg. 58)

**Dates/Times:** Wednesdays and Fridays, 7:30 a.m. - 9:30 a.m.

**Location:** **Glendale Sports Complex**  
2200 Fern Lane, Glendale, CA 91208

## MASTERS OPEN PLAY SOCCER (Ages 60+)

On Tuesdays and Thursdays, the City offers casual pick-up soccer for adults over age 60 in both a walking and running format. Walking soccer is designed to get seniors on the field to stay physically active, but without the intensity of a regular game. The programs will be offered at different times to allow for safe and enjoyable games for both intensities.

**Fee:** Activity Card holders only. \$2 per player per day (see fee schedule on pg. 58)

**Dates/Times:** Tuesdays and Thursdays,    Walking Soccer            10:00 a.m. - 11:00 a.m.  
   Masters Soccer            11:00 a.m. - 1:00 p.m.

**Location:** **Glendale Sports Complex**  
2200 Fern Lane, Glendale, CA 91208

# Registration Information

## ONLINE REGISTRATION

[www.myglendaleparks.com](http://www.myglendaleparks.com)

## WALK-INS WELCOME

Visit Registration Locations mentioned below.



Contact the Customer Service Office  
at (818) 548-2184  
Monday – Friday, 8:30 a.m. – 5:00 p.m.

## ONLINE REGISTRATION

Our online registration service allows you to register for activities through the internet **24 hours a day, 7 days a week**. Below you will find instructions that will help you establish a customer account, ID# and a password. Please read all the information online, especially sections regarding **residency and refunds**.

**Step 1: Find our website:** [www.myglendaleparks.com](http://www.myglendaleparks.com)

**Step 2: Log in with your credentials.** If you have never logged in before, set up an online account. Be sure to add all of your family members. If you have forgotten your login credentials, please call (818) 548-2184 or email [CSPcustomerservice@glendaleca.gov](mailto:CSPcustomerservice@glendaleca.gov).

**Step 3: Browse activities.** Click on Activity Search, and Search Activities.

**Step 4: Select activities by clicking on the shopping cart icon.**

**Step 5: Pay for activities by clicking on Shopping Cart on the top right of your screen.**

## REGISTRATION REFUND POLICY

- Refunds are not available online.
- Contract classes or activities not reaching minimum numbers by the first week of classes may be cancelled and fees refunded. Service fees will not be refunded, in the event of class cancellation.
- Full refund, less an administrative fee, may be given if a refund is requested prior to start of programs/classes.
- Refunds requested after start of the program/class are contingent upon City approval and will only be considered through the conclusion of second week of scheduled class or second day of camp, and will be prorated.
- No refunds offered for Aquatics programs or classes.

For more information,  
call (818) 548-2752 or (818) 548-2184.

## REGISTRATION LOCATIONS:

Register for Classes & Camps at  
any one of the following locations:

### Civic Auditorium

(In person, phone, and online registrations  
will be accepted.)

1401 North Verdugo Rd., Glendale, CA 91208  
(818) 548-2752 or (818) 548-2184  
[www.myglendaleparks.com](http://www.myglendaleparks.com)

### Adult Recreation Center

Central Park Complex  
201 E. Colorado St., Glendale, CA 91205  
(818) 548-3775

### Glendale Sports Complex

2200 Fern Lane, Glendale, CA 91208  
(818) 937-7440

### Maple Park Community Center

820 E. Maple St., Glendale, CA 91205  
(818) 548-3783

### Pacific Community Center & Pool

501-509 South Pacific Ave., Glendale, CA 91204  
(818) 548-4098

### Sparr Heights Community Center

1613 Glencoe Way, Glendale, CA 91208  
(818) 548-2187

### Verdugo Skate Park

1621 Cañada Blvd., Glendale, CA 91208  
(818) 548-2786



# GCC Senior Classes



## SENIOR CLASSES: Glendale Community College Sponsored

Ages 60+: The City of Glendale, in partnership with Glendale Community College, is sponsoring several classes for seniors FREE of charge. For information or class registration, please call (818) 243-5196.

### Spring Session Dates: February 18 - June 10, 2020

The following classes typically take place at the following locations/days/times:

#### ADULT RECREATION CENTER

201 E. Colorado Blvd., Glendale, CA 91205  
(818) 548-3775

##### Lip Reading

Mondays & Thursdays, 9:30 a.m. - 11:00 a.m.

Location: Activity Room

##### Film Appreciation

Wednesdays, 1:00 p.m. - 4:00 p.m.

Location: Activity Room

#### SPARR HEIGHTS COMMUNITY CENTER

1613 Glencoe Way Glendale, CA 91208  
(818) 548-2187

##### Self-Discovery Via Writing

Wednesdays, 1:00 p.m. - 3:00 p.m.

Location: Garden Room

##### Ancient Civilization

Fridays, 12:30 p.m. - 2:30 p.m.

Location: Verdugo Room



# Senior Classes

## ADULT RECREATION CENTER

201 E. Colorado St., Glendale, CA 91205  
For more information, call (818) 548-3775.

The City of Glendale Community Services & Parks Department is sponsoring the following classes for seniors ages 60+.

**Fee Schedule:** \$1 per class, payable at the beginning of each class. Activity card holders only. (Card must be presented upon payment.)

**Activity Card Fee:**

Senior Activity Cards (60 years of age and older)	\$10/year
Adult Activity Cards (18 - 59 years old)	\$25/year

**ALL CLASSES ARE ONGOING. YOU MAY REGISTER AT ANY TIME.**

### Muscle Toning with Weights

Get Moving! There are mental and physical benefits from exercising regularly. Increase your energy, strength and bone density.

**Fee:** See fee schedule above.

Days	Time	Instructor
Mondays & Wednesdays	9:00 a.m. - 10:00 a.m.	Anne Kido
Tuesdays	8:00 a.m. - 9:00 a.m.	Patricia Kriste
Fridays	9:00 a.m. - 10:00 a.m.	Patricia Kriste

### Senior Aerobics

Increase your energy and reduce your stress! Join us for a fun, low-impact aerobics class that will help improve flexibility and strength.

**Fee:** See fee schedule above.

Days	Time	Instructor
Mondays	8:00 a.m. - 9:00 a.m.	Patricia Kriste
Tuesdays & Thursdays	9:00 a.m. - 10:00 a.m.	Patricia Kriste

### Zumba

Join us for this fun and exciting class, where you will dance to great music, meet great people, and burn a ton of calories without even realizing it.

**Fee:** See fee schedule above.

Days	Time	Instructor
Wednesdays & Fridays	8:00 a.m. - 9:00 a.m.	Denise Gonzalez

### Tai-Chi for Seniors

Tai-Chi's slow dance-like movements bring balance, harmony and relaxation to participants. Come and learn the principles of this ancient form of exercise. The class meets in the Tai Chi Garden.

**Fee:** FREE. Activity Card Holders Only. See Activity Card fee schedule above.

Days	Time
Tuesdays, Thursdays, & Saturdays	10:00 a.m. - 11:00 a.m.

# Senior Classes

## PACIFIC COMMUNITY CENTER

501 S. Pacific Ave, Glendale, CA 91204  
For more information, call (818) 548-4098.

### Activity Card Fee:

Senior Activity Cards (60 years of age and older)  
Adult Activity Cards (18 - 59 years old)

\$10/year  
\$25/year

### HEALTH EXERCISE

Keep active and stay young at heart. Improve muscle tone, strength, and coordination. Fridays are Fun Fridays! Enjoy a mix of exercise and beginning line dancing.

**Instructor:** Carol Thomsen

**Days:** Mondays, Wednesdays, and Fridays

**Time:** 9:30 a.m. - 12:00 p.m.

**Fee:** Activity Card Holders \$3 per class  
Non-Activity Card Holders \$6 per class.



### LINE DANCING

Learn to line dance and exercise at the same time!

**Instructor:** Pauline Wong

**Days:** Monday

**Time:** 12:30 p.m. - 2.30 p.m.

**Fee:** Activity Card Holders \$2 per class  
Non-Activity Card Holders \$4 per class.

### PICKLEBALL

Come out and try this new sport, make some friends and see what everyone is talking about.

**All Levels and Ages Welcome**  
**Coaching Available for Beginners**  
**Paddles Available**

#### 3 Outdoor Courts

<b>Days and Times:</b>	Mondays	9:00 a.m. - 12:00 p.m. 6:00 p.m. - 9:00 p.m.
	Tuesdays	9:00 a.m. - 12:00 p.m.
	Wednesdays	9:00 a.m. - 12:00 p.m. 6:00 p.m. - 9:00 p.m.
	Thursdays	9:00 a.m. - 12:00 p.m.
	Saturdays	9:00 a.m. - 12:00 p.m.



#### 4 Indoor Courts

<b>Days and Times:</b>	Tuesdays	6:00 p.m. - 9:00 p.m. (Closed 3/3/20 & 5/12/20)
------------------------	----------	---



# Senior Classes

## SPARR HEIGHTS COMMUNITY CENTER

1613 Glencoe Way, Glendale, CA 91208  
For more information, call (818) 548-2187.

The City of Glendale Community Services & Parks Department is sponsoring the following classes for seniors ages 60+.

**Fee Schedule:** Activity Card Holders \$1 per class  
Non-Activity Card Holders \$2 per class, collected at the beginning of each class.

**Activity Card Fee:**

Senior Activity Cards (60 years of age and older)	\$10/year
Adult Activity Cards (18 - 59 years old)	\$25/year

**ALL CLASSES ARE ONGOING. YOU MAY REGISTER AT ANY TIME.**



### Senior Fitness & Weight Training

There are mental and physical benefits from exercising regularly. Increase your energy, strength, and bone density.

**Fee:** See fee schedule above.  
**Instructor:** Yvonne Longo

Session 1: Mondays, Wednesdays & Fridays	9:30 a.m. - 10:30 a.m.
Session 2: Mondays and Wednesdays	10:30 a.m. - 11:30 a.m.

### Specialty Fitness with Yvonne

This exercise class designed for adults with intellectual disabilities encourages participants to get into shape by learning the fundamentals of basic exercise routines. Caregivers are welcome to work out alongside participants.

**Fee:** See fee schedule above.  
**Instructor:** Yvonne Longo  
**Days/Time:** Fridays 10:30 a.m. - 11:30 a.m.



### Tai Chi for Seniors - Drop-In

Learn how to relax while learning this ancient form of exercising.

**Fee:** See fee schedule above.  
**Instructor:** Student lead  
**Days/Time:** Mondays, Wednesdays & Fridays 8:40 a.m. - 9:20 a.m.

### Gentle Senior Yoga

This yoga class is geared to seniors to promote gentle stretching, balancing movements, and breathing techniques. Learn the skills necessary to relax and meditate to increase physical and mental health.

**Fee:** See fee schedule above.  
**Instructor:** Rosalie Blum  
**Days/Time:** Tuesdays & Thursdays 9:00 a.m. - 10:00 a.m.



# Activities for Seniors

## SPARR HEIGHTS COMMUNITY CENTER

1613 Glencoe Way, Glendale, CA 91208  
For more information, call (818) 548-2187.

### Activity Card Fee:

Senior Activity Cards (60 years of age and older)  
Adult Activity Cards (18 - 59 years old)

\$10/year  
\$25/year

The following activities are available to Activity Card holders only. No additional fee.

### Woodcarving Class

Bring your favorite tools, create a work of art, and enjoy the companionship of like-minded folks.

Day/Time:      Thursdays      10:00 a.m. - 11:00 a.m.

### Bridge

Senior bridge players of all skill levels and experience can come to the center and participate in competitive bridge games.

Day/Time:      Mondays      9:00 a.m. - 11:30 a.m.

### Bingo

If you were born to yell, "BINGO!", come out and enjoy an exciting game of senior bingo for prizes and socialization.

Day/Time:      Wednesdays      12:30 p.m. - 1:30 p.m.



# Activities for Seniors

## ADULT RECREATION CENTER

201 E. Colorado St., CA 91205

For more information, call (818) 548-3775.

The following activities are available to Activity Card holders only.



### Exercise Room at the Adult Recreation Center

The Adult Recreation Center offers a wide selection of fitness equipment including treadmills, cross-trainers, and stationary bikes along with numerous multifunction machines. Proper workout clothes and a towel is required.

**An additional ARC Gym Membership is required.**

#### Fee Schedule:

Senior Activity Cards (60 years of age and older)	\$10/year
Adult Activity Cards (18 - 59 years old)	\$25/year
Senior ARC Gym Membership	\$50/year plus an Activity Card
Adult ARC Gym Membership	\$80/year plus an Activity Card

#### Exercise Room Hours

Monday - Thursday	8:00 a.m. - 7:30 p.m.
Fridays & Saturdays	8:00 a.m. - 4:30 p.m.
Sundays	Closed

### Open Play Table Tennis

No matter what your skill level or how long it has been since you held a paddle, the time has come to play some ping pong. Make new friends and get a work out while having fun.

<b>Days/Time:</b>	Mondays, Tuesdays, Wednesdays	3:00 p.m. - 7:30 p.m.
	Thursdays	5:30 p.m. - 7:30 p.m.
	Fridays	3:00 p.m. - 4:30 p.m.

**Location:** ARC Dining Hall



### ARC Bridge Club

Millions of people play bridge worldwide. Bridge is a trick-taking game using a standard deck played by four players.

<b>Days/Time:</b>	Duplicate Bridge	Tuesdays, Thursdays, Saturdays	11:30 a.m. - 4:30 p.m.
	Beginning Bridge	Fridays	1:00 p.m. - 3:00 p.m.
	Party Bridge	Thursdays	1:00 p.m. - 4:00 p.m.

**Location:** Activity Room and/or Multi-Purpose Room B



# Activities for Seniors

## ADULT RECREATION CENTER

The following activities are available to Activity Card holders only.



### Drop-In Billiards, Backgammon, Chess, and Dominos

You can drop in Monday through Saturday to play some billiards, backgammon, Chess or dominos.

Hours may change based on room availability

<b>Days/Time:</b>	Mondays – Thursdays	8:00 a.m. - 7:30 p.m.
	Fridays and Saturdays	8:00 a.m. - 4:30 p.m.
<b>Location:</b>	Multi-Purpose Room A	

### Bingo

Make new friends while playing this timeless classic.

**Activity Card Holders: \$1 for 2 cards; Non Activity Card Holders: \$2 for 2 cards.**

<b>Days/Time:</b>	Fridays	10:00 a.m. - 11:00 a.m.
<b>Location:</b>	Multi-Purpose Room A	



### Karaoke

Make new friends while playing this timeless classic.

<b>Days/Time:</b>	Tuesdays & Fridays	1:00 p.m. - 4:00 p.m.
<b>Location:</b>	Multi-Purpose Room A	

### Knit and Chat

Bring your yarn and needles to knit and chat with your friends about various topics. Show off your skills, and teach each other new methods!

<b>Days/Time:</b>	Tuesdays & Fridays	9:00 a.m. - 10:00 a.m.
<b>Location:</b>	Activity Room	



### Senior Mixer

If you like to salsa, cha-cha, rumba, waltz or boogie, this is the place to be. The senior mixer is a great opportunity to socialize with fellow seniors in the greater community of Glendale, make new acquaintances and enjoy a good time. Please call the Adult Recreation Center for a list of specific activities that take place during the mixer.

<b>Days/Time:</b>	Thursdays	2:00 p.m. - 4:30 p.m.
<b>Location:</b>	Dining Hall	

\* A suggested donation of \$2.00 is collected at the entrance to the mixer. This is a gratuity that is given to the DJ at the end of each event.

# Senior Services

Older, active adults are invited to enjoy meaningful personal and group activities offered at the City of Glendale community centers. Services and programs are available to assist in addressing basic needs, maximizing independence, and supporting the aging community. Information and referral is available for nutrition, housing, financial assistance, health, transportation, legal, and counseling services. Our programs are designed to provide growth, enhance personal dignity, and protect individual rights.

**General Program Information:** (818) 548-3775  
**Nutritional Meals Program:** (818) 548-3772  
**Case Management Program Information:** (818) 548-3772



## Home Delivered Meals

At-risk seniors 60 years of age and older who are homebound and unable to shop for or prepare meals may be eligible for seven frozen complete meals delivered weekly to their residence. A City of Glendale Case Manager meets with the client to provide this temporary service until a long-term solution can be implemented.

*Donations are voluntary and confidential. A suggested donation is encouraged. For more information about home delivered meals and to inquire about eligibility, please contact (818) 548-3772.*



## Nutritional Meals Program

Come visit our Senior Café where you can have a delicious hot meal, socialize, and join in festive events. Adults 60 years and older are eligible for our Nutritional Meals Program funded in part through the Los Angeles County Area Agency on Aging.

**Suggested Donation: \$2.50 per meal**

## Reservations for Meals Sites and Times:

### Adult Recreation Center (ARC)

201 E. Colorado St.  
Glendale, CA 91205

Meals are served:

7 days a week  
at 11:30 a.m.

### Sparr Heights Community Center

1613 Glencoe Way  
Glendale, CA 91208

Meals are served:

Monday - Friday  
at 11:30 a.m.

### Pacific Community Center

501 S. Pacific Ave.  
Glendale, CA 91204

Meals are served:

Monday, Wednesday & Fridays  
at 12:00 p.m.

For meal information and reservations, please call: (818) 548-3772.

# Senior Services



## **CASE MANAGEMENT**

The Case Management program for seniors is designed to meet the special needs of frail individuals who may be experiencing difficulty in maintaining independent living arrangements.

**For Information & Referral Services, please call: (818) 548-3772**  
**Spanish Language Case Manager: (818) 548-2801**

## **Transportation Services and Bus Pass Sales:**

Transportation services include Dial-A-Ride, by reservation, and MTA bus passes, sold at the Adult Recreation Center, Sparr Heights Community Center and Pacific Community Center all month long.

**The Metro bus pass for seniors is not honored by the Beeline.**

For more information about the Access Paratransit Program for disabled seniors, call (818) 548-3775 or (818) 548-2187.

## **Health Insurance Counseling and Advocacy Program (HICAP):**

The state-registered Health Insurance Counseling and Advocacy Program (HICAP) Volunteer Counselors provide unbiased information, counseling and assistance on Medicare and related health care coverage, including:

- Original Medicare (Parts A & B)
- Medicare Prevention Services
- Medicare Part D (Prescription Drug Benefit)
- "Extra Help" with Medicare Part D
- Medicare Advantage: HMO'S & PPO
- Medicare Supplement (Medigap) Insurance
- Medi-Cal & Medicare Savings Programs
- Long-Term Care

Contact the Adult Recreation Center at (818) 548-3775 for more information.



# Filming in Parks & Community Buildings

## *Film Permits Process*

Looking for a great place to host your next filming project? The City of Glendale Community Services & Parks Department welcomes filming in parks and community buildings! Our parks and locations can accommodate: Feature Films, Commercials, Music Videos, Public Service Announcements, Still Photo Shoots, Reality TV Series, Documentaries, Director's Reels, Student Films.

### *Film Permits Include:*

- Reserved site
- Professional Site Host onsite to ensure film crew has access to reserved site
- Well-maintained locations that are clean and ready for set dressing if applicable

### *Previous Film Projects Include:*

- Criminal Minds TV Series
- Adidas Commercial
- The Bachelorette TV Series
- Pedigree Commercial
- Battlefield America
- MTV's Parental Control
- Various other projects

### Requesting a Film Permit

**Contact Norma Mower: (818) 548-3813**

**Email: [nmower@glendaleca.gov](mailto:nmower@glendaleca.gov)**

1. Verify park/facility availability.
2. Obtain a Film Permit Application. Film permit application can be downloaded from [www.glendaleca.gov/businesses/filming-in-glendale](http://www.glendaleca.gov/businesses/filming-in-glendale)
3. Complete a Film Permit Application with Community Services & Parks.
4. Complete a Film Permit Application with Management Services.
5. A site meeting may be scheduled in conjunction with the Facility Permit Application.
6. Make payment in full to Community Services & Parks.
7. Obtain an approved Facility Permit.





# Historic Buildings in Glendale Parks

## Le Mesnager Barn

at Deukmejian Wilderness Park

3429 Markridge Rd., Glendale, CA 91214

Deukmejian Wilderness Park occupies a rugged 709 acre site in the foothills of the San Gabriel Mountains at the northernmost extremity of the City of Glendale. Trails on the site provide spectacular views of the Crescenta Valley and the Los Angeles basin. The site is relatively undeveloped except for an area of approximately 12 acres in the southern part of the property (the Park Center area) that houses the historic Le Mesnager Barn.

For information, call (818) 548-3795.



## Rockhaven Sanitarium

2713 Honolulu Ave., Glendale, CA 91020

Rockhaven is a rare surviving example of the Sanitariums that once flourished in the Crescenta Valley. First opened in 1923 by Agnes Richard as a "home for the feeble-minded women," and later known as the "Screen Actor's Sanitarium," Rockhaven housed several Hollywood celebrities, such as Billie Burke, Flo Zigfield, Clark Gable's first wife, as well as Marilyn Monroe's mother. Over time, Agnes Richards purchased several neighboring Craftsman-style houses, and in the late 1920s and 1930s built several Spanish Colonial Revival style buildings which were designed specifically for the purpose of medical care and patient accommodations, expanding the facility to an approximately 3.5 acre site.

The character of this property was as much defined by its landscape as it was by its buildings. The buildings were, and still are, connected by meandering landscaped pathways, intimate gardens, patios, courtyards and expansive perimeter gardens to create a home-like setting for the individual care of the patients. In 1966, Rockhaven was awarded for its landscaping by Los Angeles Beautiful, Incorporated.

The City purchased the property in 2008 from Ararat Home, who had purchased the property in 2001 to operate a convalescent facility. The facility remains closed to the public at this time due to safety concerns.

You can read more about the facility by visiting the City's website, [www.glendaleca.gov](http://www.glendaleca.gov), and searching Rockhaven in the search bar.

# Tours of Historic Facilities

## Doctors House Museum & Gazebo

Inside Brand Park, 1601 West Mountain Street, Glendale, CA 91201  
(818) 242-7447

### HOURS OF OPERATION

Guided Tours: Sundays 2:00 p.m. - 4:00 p.m.  
(Closed during the months of July and December, on holidays,  
and during inclement weather)  
Docent: The Glendale Historical Society  
Suggested Donation: \$5



### FACILITY DESCRIPTION

- The Doctors House Museum is an authentically restored Queen Anne-Eastlake style home built around 1888.
- The Doctors House lawn area and gazebo are available for reservation for weddings and other special events.
- Smoking, barbecues, and amplified sound are NOT permitted because of the historic nature of the facility.

### HISTORY

- The two-story house originally stood at 921 East Wilson Avenue in Central Glendale, but was moved to its present location in 1980.
- Four early doctors owned it in succession, giving the house its name. It was later occupied by silent screen icon Nell Shipman and her family in the early 1900s.
- Threatened with demolition in 1979, community activists organized to save it and formally incorporated The Glendale Historical Society on October 24, 1979.
- The Glendale Historical Society dedicated the Doctors House to the City of Glendale on September 12, 1982, after spending thousands of volunteer hours on restoration.
- The Doctors House is registered as Glendale Register of Historic Resources #6.

## "Shoseian" Whispering Pine Teahouse & Friendship Garden

Inside Brand Park, 1601 West Mountain Street, Glendale, CA 91201  
(626) 390-0633

### HOURS OF OPERATION

Friendship Garden: Monday - Thursday 10:00 a.m. - 3:00 p.m.  
Teahouse Events/Programs: Third Sunday of the month. Visit [www.glendaleteahouse.org](http://www.glendaleteahouse.org) for event details.  
Docent: Friends of Shoseian

### FACILITY DESCRIPTION

- The traditional teahouse was built in 1974 through the combined efforts of the Sister Cities of Glendale and Higashi-Osaka, Japan. It is one of the few traditional Japanese Teahouses open to the public in the United States.
- The Teahouse, which was designed by architect Hayahiko Takase, is a unique blending of western and eastern design and an apt expression of the spirit of cross-cultural community.
- Nestled at the foot of the Verdugo Mountains beside a koi pond in a charming Japanese-style garden setting, the Teahouse is in a unique position to outreach to the community of Glendale and greater Los Angeles.
- The Japanese Friendship Garden surrounding the Teahouse is available for weddings and other special events.

### HISTORY

- The Teahouse represents the spirit of goodwill, lasting peace and friendship between the people of Japan and the United States.
- Given the name "Shoseian" or "Whispering Pine Teahouse" by Genshitsu Sen, the Fifteenth Grand Tea Master of the Urasenke School of Tea in Japan, the Teahouse is designated an official Tearoom. Dr. Yamazaki of Higashi-Osaka provided initial support for the Teahouse and Gardens.
- Through recent cooperative efforts by the City of Glendale and Friends of Shoseian, the Teahouse was refurbished and designated as Glendale Register of Historic Resources #46.



# Tours of Historic Facilities

## Casa Adobe de San Rafael & Park

1330 Dorothy Drive, Glendale, CA 91202

glendalebeautiful@gmail.com

www.glendalebeautiful.org

### HOURS OF OPERATION

Daily 8:00 a.m. – Dusk

Guided Tours: September - June: First Sunday of the Month, 1:00 p.m. - 3:00 p.m.

July & August: Every Sunday, 1:00 p.m. - 3:00 p.m.

Suggested Donation: \$2

Docent: Glendale Beautiful



### FACILITY DESCRIPTION

- The park is 1.6 acres in size.
- Amenities include a picnic pavilion which is available for small company or family picnics or gatherings, a turf area that is available for larger festival-type events, sink, electrical outlets, and public restroom facilities.
- Smoking, barbecues, and amplified sound are NOT permitted because of the historic nature of the facility

### HISTORY

- Casa Adobe de San Rafael is registered as California Landmark #235 and Glendale Register of Historic Resources #3.
- The Casa was built around 1870 by Tomas Sanchez, former sheriff of Los Angeles County, using adobe blocks to form the walls, which were then covered with stucco.
- In 1875, the property was sold, left abandoned, and fell into a ruinous state.
- In 1930 the Casa was purchased by the California Medicinal Wine Company who planned to tear down the structure and remove the large eucalyptus trees on the property. Local neighbors and community members stopped the demolition and began a campaign to preserve the house as a historic landmark.
- The City of Glendale purchased the adobe in 1930 and by 1932 La Casa de Adobe de San Rafael was completely refurbished.
- Today, the adobe includes a Monterey-style corridor (covered porch), beautiful sunken garden, brick patio, sandy brown tile roof, and long narrow front windows adorned with teal shutters. Interior furnishings are from the nineteenth century.

## Catalina Verdugo Adobe

2211 Bonita Drive, Glendale, CA 91208; (747) 228-2688

### HOURS OF OPERATION

Daily 8:00 a.m. - Dusk

Guided Tours: Scheduled Tours Only - Please call to schedule

Docent: Days of the Verdugos Heritage Association

### FACILITY DESCRIPTION

- The park is 1.3 acres in size and is nestled at the base of the Verdugo Mountains in a residential neighborhood.
- Amenities include a walking trail, a garden, and a shaded picnic area with wooden tables, benches, and electric outlets.
- Smoking, barbecues, and amplified sound are NOT permitted because of the historic nature of the facility.

### HISTORY

- The Catalina Verdugo Adobe is registered as California Historical Landmark #637 and Glendale Register of Historic Resources #1.
- The Adobe is the oldest structure in the City of Glendale. As with many early structures, the construction date of the Verdugo Adobe is uncertain. It is said the Adobe was built in 1828, but some research suggests that it dates to 1860. It was the home of Catalina Verdugo who, with her brother Julio, owned much of today's Northeast Glendale. Their father, Don Jose Maria Verdugo, was the original recipient of Rancho San Rafael, the Spanish land grant that encompassed large portions of Glendale, Burbank, and Eagle Rock.
- The grounds contain the remnants of the "Oak of Peace," under which a meeting was held in 1847 that led, a few days later, to the signing of the peace treaty, Treaty of Cahuenga, that ended the Mexican-American War.
- The Adobe originally consisted of the main room and the south wing. The north wing was added in the early 1900s, after it was sold to land developer F.P. Newport.
- In 1946, the property was sold to Dr. Ernest Bashor, and his family remained there until it was sold to the City of Glendale in 1989. It is fortunate that the historic value of the original house remained preserved.
- At present, the Museum focuses on the Verdugo family and their lifestyle in the 1800s.



# Facility Reservations

## COMMUNITY CENTERS



### **Adult Recreation Center**

201 E. Colorado St.  
Glendale, CA 91205  
(818) 548-3775

#### Indoor Spaces:

- Dining Hall, maximum capacity: 240
- Multi-Purpose Room, maximum capacity: 80
- Activity Room, maximum capacity: 15
- Full service kitchen available. *Must be reserved in conjunction with a room reservation. You must bring your own kitchen equipment including pots, pans, utensils, storage ware, etc.*

#### Outdoor Spaces:

- Upper Courtyard, maximum capacity: 24
- Lower Courtyard, maximum capacity: 56

### **Maple Park Community Center**

820 E. Maple St.  
Glendale, CA 91205  
(818) 548-3694

#### Indoor Spaces:

- Meeting Room 101, maximum capacity: 60
- Meeting Room 102, maximum capacity: 75
- Gymnasium, maximum capacity: 200
- *Two Kitchenettes equipped with warming oven, microwave, and sink. Must be reserved in conjunction with a room reservation. You must bring your own kitchen equipment including pots, pans, utensils, storage ware, etc.*

#### Outdoor Spaces:

- Terrace, maximum capacity: 20



# Facility Reservations

## COMMUNITY CENTERS



### **Pacific Community Center**

501 S. Pacific Ave.  
Glendale, CA 91204  
(818) 548-4098

#### Indoor Spaces:

- Gym A, maximum capacity: 300
- Gym B with Stage, maximum capacity: 300
- Red Bud Room, maximum capacity: 40
- Sycamore Room, maximum capacity: 60
- Oak Room, maximum capacity: 32
- Conference Room, maximum capacity: 8
- A kitchenette equipped with an oven, 6 burner stove top, warming oven, microwave, and three basin sink. *Must be reserved in conjunction with a room reservation. You must bring your own kitchen equipment including pots, pans, utensils, storage ware, etc.*

#### Outdoor Spaces:

- Little League Baseball Field
- Multi-Use Artificial Turf Field with soccer lines
- Terrace, maximum capacity: 24
- Multi-Use Court with basketball and Pickleball lines
- Two picnic shelters, maximum capacity: 50 each (equipped with a barbecue and sink)

### **Sparr Heights Community Center**

1613 Glencoe Way  
Glendale, CA 91208  
(818) 548-2188

#### Indoor Spaces:

- Verdugo Room maximum capacity: 100
- Garden Room maximum capacity: 40
- A Kitchenette equipped with warming oven, microwave, and two basin sink. *Must be reserved in conjunction with a room reservation. You must bring your own kitchen equipment including pots, pans, utensils, storage ware, etc.*

#### Outdoor Spaces:

- South Patio maximum capacity: 80
- North Patio maximum capacity: 8





# Facility Reservations

## PICNIC FACILITIES

(818) 548-2184 | (818) 548-2752

### **Verdugo Park**

1621 Canada Blvd., Glendale, CA 91208

- Sections: 5
- Maximum Capacity: 100 per section
- Amenities Include: BBQ grill, electrical outlets available in sections 2, 3, 4
- Jumper permitted

### **Catalina Verdugo Adobe**

2211 Bonita Ave., Glendale, CA 91208

- Pavilions: 1
- Maximum Capacity: 50
- Amenities Include: Electrical outlets,
- No onsite cooking

### **Palmer Park**

610 E. Palmer Ave., Glendale, CA 91205

- Pavilions: 2
- Maximum Capacity: 50 per pavilion
- Amenities Include: Electrical outlets, BBQ grill, sink
- Jumper permitted

### **Cerritos Park**

3690 San Fernando Rd., Glendale, CA 91204

- Pavilions: 1
- Maximum Capacity: 30
- Propane gas BBQ only
- Jumper permitted

### **Deukmejian Wilderness Park**

3429 Markridge Rd., Glendale, CA 91214

- Pavilions: 1
- Maximum Capacity: 50
- Amenities Include: Electrical outlets
- No onsite cooking

### **Lower Scholl Canyon Park**

2847 E. Glenoaks Blvd., Glendale, CA 91206

- Pavilions: 3
- Maximum Capacity: 80 per pavillion
- Amenities Include: BBQ grill, sink, electrical outlets
- Jumper permitted

### **Casa Adobe de San Rafael**

1330 Dorothy Dr., Glendale, CA 91202

- Pavilions: 1
- Maximum Capacity: 100
- Amenities Include: Sink, electrical outlets
- Jumper permitted
- No onsite cooking

### **Central Park Paseo**

220 S. Brand Blvd., Glendale, CA 91202

- Maximum Capacity: 75
- Amenities Include: Electrical outlets



# Facility Reservations

## COMMUNITY BUILDINGS

(818) 548-2184 | (818) 548-2752

### **Griffith Manor Community Room**

1551 Flower St., Glendale, CA 91201

- Maximum Capacity: 50
- Amenities Include: Tables, chairs, warming oven, refrigerator, sink
- Jumper permitted

### **Dunsmore Community Building**

4700 Dunsmore Ave., Glendale, CA 91214

#### **Dunsmore Community Room**

- Maximum Capacity: 50
- Amenities Include: Tables, chairs
- Jumper permitted

#### **Dunsmore Community Room Kitchen**

- Amenities Include: Sink, warming oven, refrigerator

### **Joe Bridges Clubhouse**

2531 E. Glenoaks Blvd., Glendale, CA 91206

- Maximum Capacity: 100
- Amenities Include: Tables, chairs, warming oven, refrigerator, sink
- Jumper permitted

### **Brand Studios**

1601 W. Mountain St., Glendale, CA 91201

- Maximum Capacity: 100
- Amenities Include: Tables, chairs, microwave, refrigerator, sink
- No onsite cooking



## WEDDING SITES

(818) 548-2184 | (818) 548-2752

### **Brand Friendship Garden & Victorian Gazebo**

1601 W. Mountain St., Glendale, CA 91201

- Maximum capacity: 200 people
- Amenities Include: 100 white chairs, electrical outlets

### **Deukmejian Wilderness Park Amphitheatre**

3429 Markridge Rd., Glendale, CA 91214

- Maximum Capacity: 100
- Amenities Include: Electrical outlets

### **Catalina Verdugo Adobe Park**

2211 Bonita Dr., Glendale, CA 91208

- Maximum Capacity: 50
- Amenities Include: Electrical outlets, resin picnic tables, fountain, and kitchenette with a counter and sink

### **Casa Adobe de San Rafael**

1330 Dorothy Dr., Glendale, CA 91202

- Maximum Capacity: 100
- Amenities Include: Electrical outlets, 100 chairs for ceremony/reception



# Facility Reservations



## Civic Auditorium

1401 N. Verdugo Rd.  
Glendale, CA 91208  
(818) 548-2787  
[www.glendalecivic.com](http://www.glendalecivic.com)

- Upper Auditorium, maximum capacity: 1,100
- Lower Auditorium, maximum capacity: 600
- Commercial Kitchen on both levels
- Terrace Room, maximum capacity: 125 - Must be reserved in conjunction with the Upper Auditorium
- Conference Room, maximum capacity: 125 - Must be reserved in conjunction with the Lower Auditorium
- Parking Lot and/or Structure - Must be reserved in conjunction with either the Upper or Lower Auditorium

## Sports Complex

2200 Fern Lane  
Glendale, CA 91208  
(818) 937-7440

### Indoor Spaces:

- Meeting Room, maximum capacity: 50

### Outdoor Spaces:

- Majors Artificial Turf Baseball Field with soccer lines for U12
- 2 Natural Grass Softball Fields
- 2 Artificial Turf Soccer Fields



## Pacific Community Pool

509 S. Pacific Ave.  
Glendale, CA 91204  
(818) 937-7433

### Outdoor Spaces:

- 25 yard / 6-lane pool
- Shallow end for recreation swim
- 2'-10' depth

## Verdugo Skate Park

1621 Cañada Blvd.  
Glendale, CA 91208  
(818) 548-2786

### Outdoor Spaces:

- 15,000 square foot concrete facility
- 6-9 foot Clover Bowl with an 11 foot Over-Vert section
- 6-10 foot Kidney Pool
- Street Plaza with rails and ledges
- Snake Run that empties into a 9 foot bowl with a loveseat

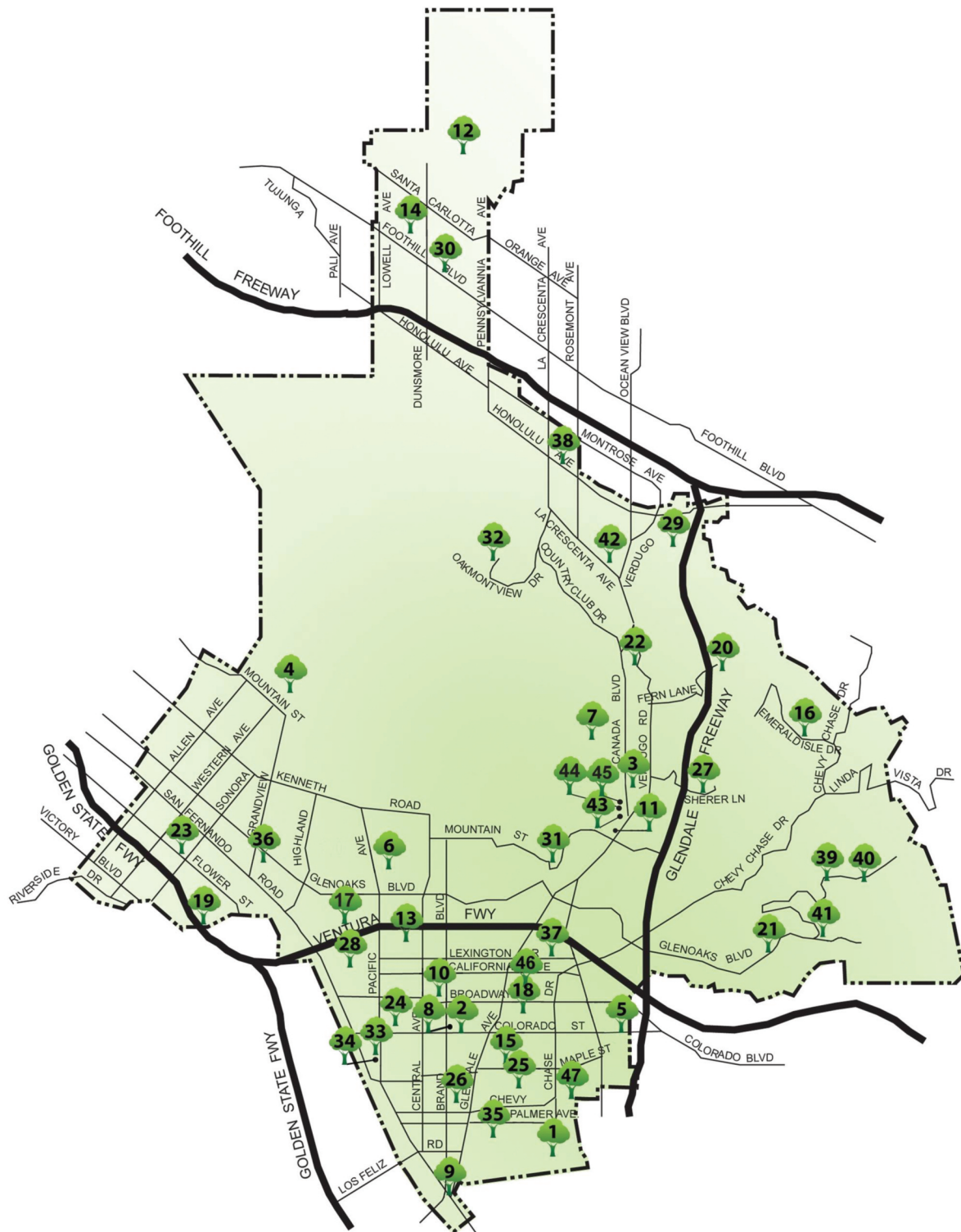




# Facility Information

1	Adams Square Mini Park	1020 E. Palmer Ave., Glendale, CA 91205
2	Adult Recreation Center & Central Park	201 E. Colorado St., Glendale, CA 91205
3	Babe Herman Little League Field	1726 Cañada Blvd., Glendale, CA 91208
4	Brand Park	1601 W. Mountain St., Glendale, CA 91201
5	Carr Park	1615 E. Colorado St., Glendale, CA 91205
6	Casa Adobe de San Rafael & Park	1330 Dorothy Dr., Glendale, CA 91202
7	Catalina Verdugo Adobe	2211 Bonita Dr., Glendale, CA 91208
8	Central Park Paseo	220 S. Brand Blvd., Glendale, CA 91202
9	Cerritos Park	3690 San Fernando Rd., Glendale, CA 91204
10	Chess Park	227 N. Brand Blvd., Glendale, CA 91202
11	Civic Auditorium	1401 N. Verdugo Rd., Glendale, CA 91208
12	Deukmejian Wilderness Park	3429 Markridge Rd., Glendale, CA 91214
13	Doran Gardens Mini Park	327 W. Doran St., Glendale, CA 91203
14	Dunsmore Park	4700 Dunsmore Ave., Glendale, CA 91214
15	Elk Mini Park	800 E. Elk Ave., Glendale, CA 91205
16	Emerald Isle Park	2130 Lenore Dr., Glendale, CA 91206
17	Fremont Park	600 W. Hahn Ave., Glendale, CA 91203
18	Glendale Heritage Garden	141 S. Cedar St., Glendale, CA 91205
19	Glendale Narrows Riverwalk	300 Paula Ave., Glendale, CA 91201- West Entrance
20	Glendale Sports Complex	2200 Fern Lane, Glendale, CA 91208
21	Glenoaks Park	2531 E. Glenoaks Blvd., Glendale, CA 91206
22	Glorietta Park	2801 N. Verdugo Rd., Glendale, CA 91208
23	Griffith Manor Park	1551 Flower St., Glendale, CA 91201
24	Harvard Mini Park	425 W. Harvard, Glendale, CA 91204
25	Maple Park and Community Center	820 E. Maple St., Glendale, CA 91205
26	Maryland Avenue Park	812 S. Maryland Ave., Glendale, CA 91205
27	Mayors Bicentennial Park	1787 Loma Vista Dr., Glendale, CA 91208
28	Milford Mini Park	601 W. Milford Ave., Glendale, CA 91203
29	Montrose Park	3529 Clifton Place, Glendale, CA 91208
30	New York Park	4525 New York Ave., Glendale, CA 91214
31	Nibley Park	1103 E. Mountain St., Glendale, CA 91207
32	Oakmont View Park	2940 Oakmont View Dr., Glendale, CA 91208
33	Pacific Park & Community Center	501 S. Pacific Ave., Glendale, CA 91204
34	Pacific Community Pool	509 S. Pacific Ave., Glendale, CA 91204
35	Palmer Park	610 E. Palmer Ave., Glendale, CA 91205
36	Pelanconi Park	1000 Grandview Ave., Glendale, CA 91201
37	Piedmont Park	1145 E. Lexington Dr., Glendale, CA 91206
38	Rockhaven - CLOSED FOR PUBLIC USE	2713 Honolulu Ave., Glendale, CA 91020
39	Scholl Canyon Athletic Fields	3200 E. Glenoaks Blvd., Glendale, CA 91206
40	Scholl Canyon Golf Course & Tennis Center	3800 E. Glenoaks Blvd., Glendale, CA 91206
41	Scholl Canyon Park & Picnic Area	2849 E. Glenoaks Blvd., Glendale, CA 91206
42	Sparr Heights Community Center	1613 Glencoe Way, Glendale, CA 91208
43	Stengel Field	1601 Cañada Blvd., Glendale, CA 91208
44	Verdugo Park	1621 Cañada Blvd., Glendale, CA 91208
45	Verdugo Skate Park	1621 Cañada Blvd., Glendale, CA 91208
46	Wilson Mini Park	1101 E. Wilson, Glendale, CA 91206
47	Windsor Mini Park	1300 E. Windsor, Glendale, CA 91205

# Map of Glendale Parks



## PARKS, COMMUNITY CENTERS, HISTORIC SITES, AND SPECIAL USE FACILITIES

## Spring 2020 Leisure Guide

# Phone Directory

Administration Office: (818) 548-2000 | Fax: (818) 548-3789

## **RECREATION PROGRAMS**

Aquatics Programs .....	(818) 937-7433
Customer Service Office .....	(818) 548-2184, (818) 548-2752
Contract Classes Registration .....	(818) 548-2184, (818) 548-2752
Trails & Open Space Program .....	(818) 548-3795
Party On the Go!/Climbing Wall/Flicks on the Go!.....	(818) 548-2188
Senior Programs & Services .....	(818) 548-3775
Sports Programs for Adults and Youth .....	(818) 937-7440
Therapeutic Recreation Programs .....	(818) 548-3783
Verdugo Skate Park .....	(818) 548-2786
Volunteer Program .....	(818) 548-2792
Youth & Family Services Program .....	(818) 937-7246

## **FACILITY RESERVATION AND INFORMATION**

Adult Recreation Center .....	(818) 548-3775
Brand Studios .....	(818) 548-2184, (818) 548-2752
Civic Auditorium .....	(818) 548-2787
Film Permits .....	(818) 548-3813
Glendale Sports Complex & Sports Fields .....	(818) 937-7440
Maple Park Community Center .....	(818) 548-3783
Pacific Community Center .....	(818) 548-4098
Pacific Community Pool .....	(818) 937-7433
Park & Picnic Reservations .....	(818) 548-2184, (818) 548-2752
Photography Permits .....	(818) 548-2184, (818) 548-2752
Sparr Heights Community Center .....	(818) 548-2187
Wedding Reservations .....	(818) 548-2184, (818) 548-2752



# Introducing the Mosaic Mural at Deukmejian Wilderness Park



The Glendale Parks & Open Space Foundation (GPOSF) has commissioned Zoe Mosaics to create an original stained glass mosaic mural to serve as a portal into Deukmejian Wilderness Park and convey the stunning natural diversity of Glendale's greatest wilderness.

You can now add your name, the name of your family, company, or organization to a one-of-a-kind legacy tile on the mural!

All funds collected will go to GPOSF for trails and open space programs and programming for the future Nature Education Center at the Le Mesnager Barn at Deukmejian Wilderness Park.

To sponsor a mosaic tile or for more information, visit [www.glendaleparksfoundation.org](http://www.glendaleparksfoundation.org), or contact Michelle Metchikian at (818) 641-8222; [info@glendaleparksfoundation.org](mailto:info@glendaleparksfoundation.org).



*The Glendale Parks & Open Space Foundation is a non-profit organization, established in 2009, to nurture friendly, safe, clean and well-maintained parks and open spaces that enrich the entire community by inspiring creation, education and an enhanced quality of life. GPOSF has been fundraising for parks, and trails and open space programs since its establishment. To make a tax-deductible donation, visit <http://www.glendaleparksfoundation.org/donate/>.*

