

City of Glendale, Community Services & Parks

Leisure Guide

WINTER 2019-2020



PROGRAMS, ACTIVITIES AND PARKS!
CHECK OUT OUR ICE SKATING RINK! (SEE PAGE 5)



**Parks
Make
Life
Better!**



www.glendaleca.gov/parks

[@MyGlendaleParks](https://www.instagram.com/MyGlendaleParks)

[#MyGlendaleParks](https://www.facebook.com/MyGlendaleParks)

What's Inside

3	Greetings from the Director
4	E-Newsletter Information
5-9	Special Events
10	Special Events - Historic Facilities
11	Special Events - Seniors
12-14	Party Packages
15	Aquatics Program Information
16-17	Day Camp Registration Information
18	Day Camps - Thanksgiving Break
19-20	Day Camps - Winter Break
21	Specialty Camps - Winter Break
22-23	Day Camps - Spring Break
24	Glendale Youth Alliance
25-27	Youth & Family Services
28-29	Drop-In Programs
30-31	Trails & Open Space
32-33	Verdugo Skate Park Programs
34	Contract Class Information
35-36	Youth Classes
37-39	Youth Sports
40-41	Adult Classes
42-44	Adult Sports
45	Registration Information
46	GCC Senior Classes
47-49	Senior Classes
50-52	Activities for Seniors
53-54	Senior Services
55	Filming in Parks & Community Buildings
56	Historic Buildings in Glendale Parks
57-58	Tours of Historic Facilities
59-63	Facility Reservations
64	Facility Information
65	Map of Glendale Parks
66	Phone Directory

Councilmembers:

Honorable Ara Najarian, Mayor
Paula Devine, Vartan Gharpetian,
Vrej Agajanian, and Frank Quintero

Parks, Recreation & Community Services Commission

Susan Wolfson, *President Pro Tem*
Dveen Babaian, *Secretary Pro Tem*
Commissioners:
Katharine Eberle, Ara Kalfayan, and Grant Michals

CDBG Advisory Committee

Armik Avedisian, *Chair*
Zanku Armenian, *Vice Chair*
Committee Members:
Ronnie Gharibian, Noraier Ghazarian, and Lila Ramirez

Management Services

Yasmin K. Beers, *City Manager*
Roubik Golanian, *Assistant City Manager*
John Takhtalian, *Deputy City Manager*

Community Services & Parks

Onnig Bulanikian, *Director*
Tereza Aleksanian, *Deputy Director - Admin, R&CS, Human Services*
Koko Panossian, *Deputy Director - Park Services, Park Planning*
Judith Velasco, *Workforce Development Administrator*
Ivet Samvelyan, *Community Services Manager - Homeless Programs*
Maggie Kavarian, *Sr. Comm Svcs Supv - CDBG, Human Services*
Gabrielle Goglia, *Sr. Community Services Supervisor - R&CS*
Sevag Garabetian, *Sr. Community Services Supervisor - R&CS*

SATISFACTION GUARANTEE

Satisfaction is guaranteed on all programs. If you are not satisfied with the quality of our programs, for any reason, we encourage you to contact us immediately so that we can work to resolve your concerns and improve the quality of our programs for all participants.

Si tiene necesidad de interpretación, favor de llamar al (818) 548-2782.

Հայերեն տեղեկությունների համար զանգահարել հետևյալ հեռախոսահամարով (818) 548-2000

Administration Office: (818) 548-2000

www.glendaleca.gov/parks



Follow us on Twitter: @MyGlendaleParks and



facebook.com/MyGlendaleParks

Greetings From The Director



Winter 2019-2020

If attaining better physical, mental, and social health are on your resolutions list for 2020, the Community Services & Parks Department is here to help! Get a head start on your New Year's resolutions by enrolling in dance, sports, exercise, wellness, visual arts, or special interest classes. We are proud to offer a variety of options for everyone!

Tot Time for preschoolers (ages 5 and under) and their parents offers a great opportunity to socialize, build developmental skills, meet new friends, and take part in fun, age-appropriate activities.

For winter break, consider registering your youth or teens in one of our fun and exciting winter day camps. This is a great time for youth to play games, create crafts, and make new friends. There is also a variety of classes for them to choose from, including soccer, tennis, gymnastics, drawing, or skating. It's also not too late to register for Thanksgiving day camps or too early to look ahead at the day camps that will be available in spring.

Adults can acquire peace and rejuvenation through yoga, aikido, and watercolor art classes, or release some extra energy in Zumba, volleyball, and badminton.

Senior adults can enjoy a variety of recreation events and programs that promote health, independence, self-sufficiency, and self-fulfillment. These opportunities await seniors at the Adult Recreation Center and Sparr Heights Community Center.

People of all ages and fitness levels can enjoy our trails and open space or visit our various historic homes. Look inside for other classes and activities offered this season, as well as human service programs for youth, families, and seniors.

Did you know that Glendale is getting its own ice skating rink this winter? That's right! You can ice skate at Glendale City Hall, in the parking lot off of Isabel and Broadway! Glendale's Holiday on Ice will open on November 22, 2019, and you can enjoy skating daily through January 6, 2020. It will even be open on Christmas and New Year's Days (details on page 5)!

Last, but not least, I am pleased to invite you and your family to several special events this season: Holiday Tree Lighting Ceremony on December 6, Holly Jolly Breakfast with Santa on December 7, and Ugly Sweater Party in the Paseo on December 21, 2019 (details on pages 6 and 7).

Wishing you and your family a happy holiday season and healthier new year!

Respectfully,

A blue ink signature of Onnig Bulanikian.



Onnig Bulanikian, Director
Community Services & Parks Department

E-Newsletter Information

Community Services & Parks (CSP) Monthly E-Newsletter

Get the most up-to-date information about what is happening in the Community Services & Parks Department by signing up to receive the department's monthly E-Newsletter. Learn about upcoming events, community meetings, registration deadlines, parks projects, ongoing programs and services, program success stories, and more.



E-mail us at CSP@glendaleca.gov to be added to the e-mail distribution list.

(P.S. We never make your e-mail address available to any other company or organization.)

www.glendaleca.gov/parks

Special Events



GLENDALÉ'S HOLIDAY ON ICE

OUTDOOR ICE SKATING RINK

NOV. 22ND 2019 *thru* **JAN. 6TH** 2020

OPEN DAILY | WEATHER PERMITTING



TICKETS

Unlimited Skating
No re-entry

General Admission **\$12.00**

Must be at least 3 years old to skate

Skate Rental **\$5.00**

Skating Aids **\$8.00**

Bobby® & Tommy® - per session rental

HOURS OF OPERATION

November 22 - December 22

Monday - Thursday

2:30 pm - 10:00 pm

Friday

2:30 pm - 11:00 pm

Saturday

10:00 am - 11:00 pm

Sunday

10:00 am - 10:00 pm

December 23 - January 6

Sunday - Thursday

10:00 am - 10:00 pm

Friday & Saturday

10:00 am - 11:00 pm

CITY HALL PARKING LOT

Located minutes from downtown Glendale - 122 N. Isabel St., Glendale, CA 91206

For more information and special event dates, please visit:

WWW.GLENDALSHOLIDAYONICE.COM

Glendale's Holiday On Ice brought to you by your Glendale City Council.



@MyGlendaleParks

#GlendalesHolidayOnIce #IceSkateGlendale #GlendaleIceSkatesOutdoors

Special Events



The City of Glendale and Community Services & Parks Department
cordially invite you to the

HOLIDAY TREE LIGHTING CEREMONY

Friday, December 6, 2019 at 6PM
City Hall Perkins Plaza

613 E. Broadway, Glendale, CA 91206

Featuring: Lighting of the City Hall tree, performances by R.D. White Chorus and
Roosevelt Stage Band, a special visit from Santa, a holiday movie and food trucks.
Ice Skating at Glendale's Holiday on Ice will be available before and after the event.



CRAM-A-CLASSIC TOY DRIVE

Friday, December 6, 2019 at 6PM
Toy Drop-Off on Isabel St.

131 N. Isabel St., Glendale, CA 91206

Glendale Fire Department and ABC 7 invite you to bring a new unwrapped toy to the Holiday Tree
Lighting event. Help us cram a Cruise Night classic car with toys! Glendale Firefighters will collect
and distribute toys to underserved children in our community.



Community
Services & Parks

Free parking at the Civic Center Visitors Parking Structure located at 620 E. Wilson Ave, Glendale, CA 91206.

In case of rain, the events may be cancelled. For more information, please call

(818) 548-2792 or email: PBetancourt@glendaleca.gov

@MyGlendaleParks

www.glendaleca.gov/parks

Special Events



Community
Development

Community
Services & Parks

The City of Glendale and Community Services & Parks are proud to host Holidays In The Paseo in conjunction with the Greater Downtown Glendale Association and presented by Economic Development.

HOLLY JOLLY BREAKFAST WITH SANTA

SATURDAY, DECEMBER 7, 2019
9am – 12pm

(Food will be served while supplies last)

Artsakh Paseo – between Wilson Ave. & Broadway
Enjoy free hot chocolate and coffee, along with some breakfast goodies with Santa. Kids can meet with Santa, mail a letter to the North Pole, and make an arts & crafts project to take home!

In case of rain, event will be cancelled. For more information, please call (818) 548-2792 or email: PBetancourt@Glendaleca.gov

   @MyGlendaleParks





Community
Development

Community
Services & Parks

The City of Glendale and Community Services & Parks are proud to host Holidays In The Paseo in conjunction with the Greater Downtown Glendale Association and presented by Economic Development.

UGLY SWEATER PARTY IN THE PASEO

Saturday, December 21, 2019
4pm – 7pm

Artsakh Paseo
between Wilson Ave. & Broadway
Enjoy an afternoon of pizza and treats with some of Santa's helpers. The afternoon will include crafts, dancing and an ugly sweater contest!

(Food will be served while supplies last)

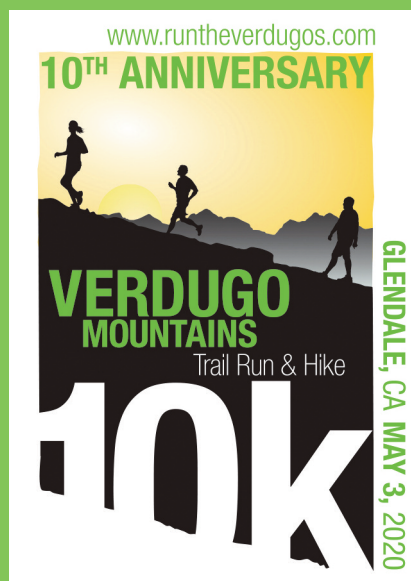
In case of rain, event will be cancelled. For more information, please call (818) 548-2792 or email: PBetancourt@Glendaleca.gov

   @MyGlendaleParks



Special Events

10 YEAR ANNIVERSARY



Verdugo Mountains 10K Trail Run & Hike

Registration opens Thursday, January 9, 2020

www.runtheverdugos.com

Brand Park, 1601 W. Mountain St., Glendale, CA 91201

Sunday, May 3, 2020

8:00 a.m.

www.glendaleca.gov/parks

Special Events

PARENT'S NIGHT OUT

Drop off the kids for a night of fun activities, friends, food and a movie. The fee is \$15.00 per child, ages 5 to 12 years old. Participants are encouraged to bring pajamas, a blanket and a pillow. For more information, please call (818) 548-2187 or email mamazaspian@glendaleca.gov.

Date: November 22, 2019

Time: 6:00 p.m. – 12:00 a.m.

Location: Pacific Community Center, 501 S. Pacific Ave., Glendale, CA 91204

Date: December 6, 2019

Time: 6:00 p.m. – 12:00 a.m.

Location: Pacific Community Center, 501 S. Pacific Ave., Glendale, CA 91204

Date: January 24, 2020

Time: 6:00 p.m. – 12:00 a.m.

Location: Sparr Heights Community Center, 1613 Glencoe Way, Glendale, CA 91208

Date: February 14, 2020

Time: 6:00 p.m. – 12:00 a.m.

Location: Pacific Community Center, 501 S. Pacific Ave., Glendale, CA 91204



PARENT'S DAY OUT

We'll take care of the kids while you catch up on your holiday shopping list. The kids will enjoy a day filled with fun activities, food, and a movie. The fee is \$15.00 per child, ages 5 to 12 years old. For more information, please call (818) 548-2187, or email mamazaspian@glendaleca.gov.

Date: December 8, 2019

Time: 10:00 a.m. – 4:00 p.m.

Location: Pacific Community Center, 501 S. Pacific Ave., Glendale, CA 91204

Special Events - Historic Facilities

"Shoseian" Whispering Pine Teahouse & Friendship Garden

Inside Brand Park, 1601 West Mountain St., Glendale, CA 91201; (626) 390-0633

Join the Friends of the Shoseian Teahouse every third Sunday of the month for these family friendly events.

Please RSVP to: friends@shoseianteahouse.com



Shinto Spirit and Native American Wisdom

Join us with a Shinto and Native American Elder as they share their insights into nature, "spirit in all things" and wisdom from cultures that are thousands of years old.

Date: November 17, 2019

Time: 11:00 a.m. - 1:00 p.m.

Donation: \$20

Holiday Tea and Japan Culture Day

Join us for our biggest event of the year with tea ceremony, martial arts, taiko drums, Calligraphy, bonsai, ikebana and more! Great music and food!

Date: December 15, 2019

Time: 12:00 p.m. - 4:00 p.m.

Donation: \$20

Doctors House Museum & Gazebo

Inside Brand Park, 1601 West Mountain St., Glendale, CA 91201; (626) 390-0633

The following event is organized and hosted by The Glendale Historical Society:



Candlelight Tours

An open house style tour where guests may explore the house as it is decorated for a Victorian Christmas. Refreshments and live holiday music will be enjoyed in the gazebo.

Date: December 14 and 21, 2019

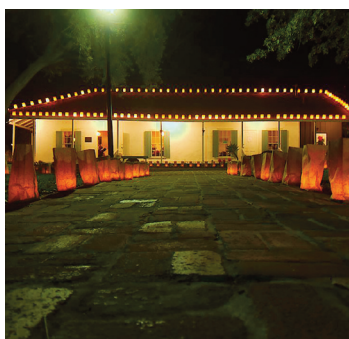
Time: 6:30 p.m. - 8:30 p.m.

Donation: \$10 per person (cash or check)

Visit www.glendalehistorical.org for the most up-to-date information.

Casa Adobe de San Rafael & Park

1330 Dorothy Drive, Glendale, CA 91202; info@glendalebeautiful.org



The following event is organized and hosted by Glendale Beautiful:

Fiesta de las Luminarias

Glendale Beautiful invites you to see the historic Casa Adobe de San Rafael on December 13 surrounded in candlelight and to enjoy traditional refreshments, a cacao ceremony, and entertainment inside the adobe and throughout the park! Then, on December 14, join them for a children's party in the afternoon and entertainment in the evening.

Date: December 13 and 14, 2019

Time: TBD

Donation: Welcomed

For more information, please contact info@glendalebeautiful.org.

www.glendaleca.gov/parks

Special Events - Seniors

SPECIAL HOLIDAY CELEBRATIONS FOR SENIORS

Participants must call ahead and make reservations at least 1 week prior to the event.

- For reservations at the Adult Recreation Center, call (818) 548-3772.
- For reservations at Sparr Heights Community Center, call (818) 548-2187.

A donation of \$2.50 is requested for lunch for seniors, 60 years of age or older, and their spouses regardless of age. Non-seniors donate \$4.75 per person.



Thanksgiving Luncheon

Celebrate Thanksgiving with your Adult Recreation Center or Sparr Heights friends. A delicious holiday lunch with all the trimmings will be served.

Date: Thursday, November 21, 2019

Time: 10:00 a.m. – 1:00 p.m.

Christmas Luncheon

Put on your favorite holiday attire, and join us for the festivities. The sounds of the season fill the air as you enjoy a delightful meal. Santa, himself, may stop by!

Date: Thursday, December 19, 2019

Time: 10:00 a.m. - 1:00 p.m.



New Year's Eve Countdown

Bring in the New Year with all of us at the Adult Recreation Center and Sparr Heights Community Center. Don't forget to bring your hats, kazoes, and tiaras, all in preparation for the countdown to 2020. Enjoy music, dancing, and old fashion sparkling apple cider.

Date: Tuesday, December 31, 2019

Time: 10:00 a.m. - 1:00 p.m.

Valentine's Day Celebration

Bring your Valentine to the Adult Recreation Center or Sparr Heights Community Center where love is in the air! A special lunch is planned.

Date: Friday, February 14, 2020

Time: 10:00 a.m. - 1:00 p.m.



Mardi Gras Celebration

Let the good times roll. In keeping with the tradition, join us for some good food, beads, and king cake.

Date: Tuesday, February 25, 2020

Time: 10:00 a.m. - 1:00 p.m.

Winter 2019-2020 Leisure Guide

Party Packages



MOBILE RECREATION

City of Glendale

PARTY ON THE GO!

Each party package is designed for children ages 5 - 12 and will include arts and crafts, sports and games. The basic "Party on the Go!" package will include two staff for two hours and 6 games/activities for up to 12 children. Additional fees will apply for larger packages.

Programs limited to the Glendale and La Crescenta area.

FEES:

- Standard pricing: \$300 for the first 2 hours
- \$100 for every hour thereafter
- (Non-profit rates available upon request and approval with proper tax status documentation)

Half of the total rental fees are due at the time of reservation to guarantee date.



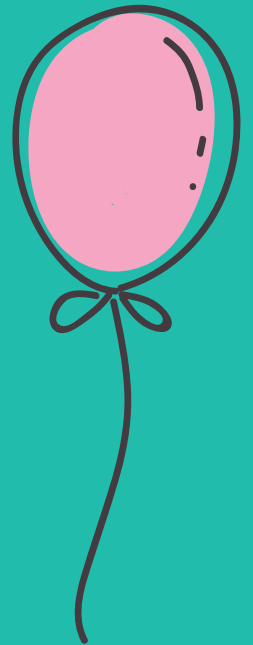
Standard Package includes six (6) from the following:

Games

Potato Sack Races
Capture the Flag
Balloon Toss
Bingo
Hula Hoop Contest
Frisbee Distance Throw
Obstacle Course

Arts and Crafts

Paint art
Clay art
Foamy art
Bead art
Wooden art
Glitter art
Coloring



For program information, please call (818) 548-2188.

Party Packages



FLICKS ON THE GO! **Mobile Movie Package**

Watching a movie under the moonlight brings back the days of the drive-in era and will surely have nostalgic appeal to families throughout our community. Watching a movie, playing video games or streaming content on a large screen during your outdoor special event will definitely elevate your event and add a hip factor. We have two packages available for your special event!

Flicks on the Go! – Package A

- 17 foot wide by 10 foot tall large projection screen with high powered video projection
- High Powered Sound System with 4 Speakers up to 1,000 Watt max output each
- Blue Ray DVD Player (*Customer is responsible to pay license fees and obtain rights to display content*)
- Generator to provide power
- 3 employees for delivery, installation, operation and breakdown
- A popcorn machine, carnival games, craft tables are available for an additional fee

Flicks on the Go! – Package B

- 15 foot wide by 8 foot tall LED Screen with 936 X 520p (4.81mm) resolution
- Height Adjustable and full 360 degree rotation for optimal viewing
- High Powered Sound System with 2 Speakers up to 1,000 Watt max output each
- Blue Ray DVD Player
- Dish Network Satellite Feed (*Customer is responsible to pay license fees and obtain rights to display content*)
- HDMI and SDI auxiliary inputs for live feed
- HDMI auxiliary input for gaming consoles (*Gaming console not included*)
- Generator to provide power
- A popcorn machine, carnival games, craft tables are available for an additional fee

For program information, please call (818) 548-2188.

Party Packages

GLENDALE ROCKS!

CLIMBING WALL



Glendale Rocks! portable climbing wall is 26 vertical feet of pure fun and excitement! The wall can be used for fundraisers, company events, grand openings, physical education classes or special events. The wall can handle 4 climbers at a time and up to 45 climbers per hour. The standard rental package will include two employees, the wall, and safety equipment for a two hour period.

Programs limited to the Glendale and La Crescenta area.

FEES:

- Standard pricing: \$300 for the first 2 hours
- \$100 for every hour thereafter
- (Non profit rates available upon request and approval with proper tax status documentation)

Half of the total rental fees are due at the time of reservation to guarantee date.

For program information, please call (818) 548-2188.

Aquatics Program Information



CITY OF GLENDALE'S PACIFIC COMMUNITY POOL IS OPEN YEAR ROUND

Pacific Community Pool

509 S. Pacific Ave.
Glendale, CA 91204

(818) 937-7433

www.GlendaleAquatics.com



JOIN US FOR RECREATION & LAP SWIM!



**Parks
Make
Life
Better!**



@MyGlendaleParks

www.GlendaleCA.gov

Day Camp Registration Information

The Community Services & Parks Department is pleased to offer day camps each season scheduled around the Glendale Unified School District calendar. Please see the individual camp listings for specific details on each camp.

Camps in this Issue: Important Dates

Season	Scholarship/Discount Applications Due by 5 p.m.	Registration Begins
Thanksgiving Break	August 9, 2019 (CLOSED)	September 9, 2019
Winter Break	October 4, 2019 (CLOSED)	November 11, 2019
Spring Break	January 10, 2020	February 10, 2020

Registration

Online registration is available at www.myglendaleparks.com.

Phone: Please call the number listed for your preferred camp site, or the Customer Service Office at (818) 548-2184.

In Person: Please visit any of the locations listed below to register in person. Your preferred camp site is recommended.

Residency Status

The Community Services & Parks Department (CSP) offers reduced Glendale Resident rates for day camps to customers who reside within Glendale Unified School District boundaries and have provided the required proof of residency. Customers only need to verify residency once per year during any season, but must re-submit proof every summer regardless of which season residency status was last verified. **Proof of residency can be provided at the time of in-person camp registration, but in order to obtain Glendale Resident rates while registering online or by phone, residency status must be verified in advance.**

You can obtain residency status in advance of camp registration by emailing a copy of your two most recent utility bills or a copy of your current, executed rental agreement to our Customer Service Office at cspcustomerservice@glendaleca.gov. Please include your full name, valid address, and a copy of the proof in the email. Emails will be reviewed within two (2) business days, and you will receive an email response confirming residency when it has been completed.

You may also pre-register in person during business hours at any of the following locations:

Adult Recreation Center

201 E. Colorado Street
Glendale, CA 91205
(818) 548-3775

Customer Service Office

1401 N. Verdugo Rd.
Glendale, CA 91208
(818) 548-2184

Glendale Sports Complex

2200 Fern Lane
Glendale, CA 91208
(818) 548-6420

Pacific Community Center

501 S. Pacific Ave
Glendale, CA 91204
(818) 548-4098

Pacific Community Pool

509 S. Pacific Ave
Glendale, CA 91204
(818) 937-7433

Maple Park Community Center

820 E. Maple St.
Glendale, CA 91205
(818) 548-3694

Sparr Heights Community Center

1613 Glencoe Way
Glendale, CA 91208
(818) 548-2188

Day Camp Registration Information

Scholarship and Discount Opportunities

Glendale residents may be eligible to receive a scholarship for camps at Maple Park Community Center or Pacific Community Center. A discount is also available for Glendale residents at all locations, based on household income levels. Please visit www.glendaleca.gov/parks and click on Day Camps in the left navigation menu for scholarship and discount information as well as "Glendale Resident" information.

Special Needs Accommodations

The Community Services & Parks Department will provide reasonable accommodations toward the inclusion of a participant. Please contact the Therapeutic Recreation Program supervisor at (818) 548-3783 two weeks prior to the start of the program. Ample time is required to determine the needs for each request.

Payment Methods

In Person*: Cash, Check, or Credit Card

Online or Over the Phone*: Credit Card

**The City of Glendale charges a non-refundable 2.5% service fee for all credit card transactions processed in person or over the phone.*



Day Camps - Thanksgiving Break



Kool Dayz Thanksgiving Camp

Pacific Community Center
501 S. Pacific Ave., Glendale, CA 91204
For information, call (818) 548-4098.

Not sure what to do with your child(ren) the week of Thanksgiving? Kool Dayz Camp is here for you! Kids will have fun making crafts, playing sports and games, competing in contests and making new friends. Campers must provide their own lunch, drink and snacks daily.

3-Day Camp

Dates: Monday - Wednesday, November 25 - 27, 2019
(No camp Thursday, November 28 and Friday, November 29, 2019)

Ages: 6 -12

	<u>Glendale</u> <u>Resident Fees</u>	<u>Non-Resident Fees</u>	<u>Times</u>
Day Long	\$51/week/child	\$60/week/child	9:00 a.m. - 4:00 p.m.
Before Care	\$12/week/child	\$12/week/child	7:00 a.m. - 9:00 a.m.
After Care	\$12/week/child	\$12/week/child	4:00 p.m. - 6:00 p.m.



Day Camps - Winter Break



Kool Dayz Winter Camp

Pacific Community Center
501 S. Pacific Ave., Glendale, CA 91204
For information, call (818) 548-4098.

Kids will have fun making crafts, playing sports and games, competing in contests and making new friends. Campers must provide their own lunch, drink and snacks daily.

3-Day Camp

Dates: **Week 1:** Monday, Thursday, Friday
December 23, 26, & 27, 2019
(No camp Tuesday, December 24 and Wednesday, December 25, 2019)

Week 2: Monday, Thursday, Friday
December 30, 2019 and January 2 & 3, 2020
(No camp Tuesday, December 31, 2019 and Wednesday, January 1, 2020)

Ages: 6 - 12

	<u>Glendale</u> <u>Resident Fees</u>	<u>Non-Resident Fees</u>	<u>Times</u>
Day Long	\$51/week/child	\$60/week/child	9:00 a.m. - 4:00 p.m.
Before Care	\$12/week/child	\$12/week/child	7:00 a.m. - 9:00 a.m.
After Care	\$12/week/child	\$12/week/child	4:00 p.m. - 6:00 p.m.

Travelin' Teens Winter Camp

Pacific Community Center
501 S. Pacific Ave., Glendale, CA 91204
For information, call (818) 548-4098.

Teen campers will explore fun Glendale locations and surrounding communities by foot. Teens will make new friends, go on a field trip, and chill with other teens.

3-Day Camp

Dates: **Week 1:** Monday, Thursday, Friday
December 23, 26, & 27, 2019
(No camp Tuesday, December 24 and Wednesday, December 25, 2019)

Week 2: Monday, Thursday, Friday
December 30, 2019 and January 2 & 3, 2020
(No camp Tuesday, December 31, 2019 and Wednesday, January 1, 2020)

Ages: 6 - 12

	<u>Glendale</u> <u>Resident Fees</u>	<u>Non-Resident Fees</u>	<u>Times</u>
Day Long	\$51/week/child	\$60/week/child	9:00 a.m. - 4:00 p.m.
Before Care	\$12/week/child	\$12/week/child	7:00 a.m. - 9:00 a.m.
After Care	\$12/week/child	\$12/week/child	4:00 p.m. - 6:00 p.m.

Day Camps - Winter Break

Sparr-Tacular Winter Camp

Sparr Heights Community Center
1613 Glencoe Way, Glendale, CA 91208
For information, call (818) 548-2187.

It's time for Winter fun at Sparr Heights Community Center! Children ages 5-12 will enjoy games, crafts, and a special treat on Fridays. Children must bring a sack lunch each day of camp. Registration is on a weekly basis.

3-Day Camp

Dates: **Week 1:** Monday, Thursday, Friday
December 23, 26, and 27, 2019
(No camp Tuesday, December 24 and Wednesday, December 25, 2019)

Week 2: Monday, Thursday, Friday
December 30, 2019 and January 2 & 3, 2020
(No camp Tuesday, December 31, 2019 and Wednesday, January 1, 2020)

Ages: 5 - 12

Fees:	<u>Glendale Resident</u>	<u>Non-Resident</u>	<u>Times</u>
	\$39/week/child	\$48/week/child	12:00 p.m. – 6:00 p.m.



Specialty Camps - Winter Break



Maximum Potential Basketball Winter Break Camp

Pacific Community Center
501 S. Pacific Ave., Glendale, CA 91204
For information, call (818) 548-4098.

Hoopapalooza is designed to help improve an individual's strength, knowledge, and overall development of basketball. Join this camp TODAY and you will be able to fulfill your aspirations. Learn the basics and advanced movements of the game. We will also cover dribbling, passing, shooting, and agility. ALL SKILL LEVELS ARE WELCOME!!!!

Mark Herring of Hoopapalooza Inc will be the instructor. Coach Herring is a native of North Carolina and has worked with the likes of Coach Krzyzewski ("Coach K", Duke University's Men's Basketball Team), Carmelo Anthony, Kobe Bryant and other NBA Stars. COME JOIN THE FUN!!!!

3-Day Camp

Dates: Monday, Thursday and Friday, December 23, 26 & 27, 2019

Ages: 5 - 9

	<u>Number</u>	<u>Fee</u>	<u>Time</u>
Half Day	360804-01	\$75/week/child	9:00 a.m. - 1:00 p.m.
Before Care	362402-01	\$20/week/child	7:00 a.m. - 9:00 a.m.

3-Day Camp

Dates: Monday, Thursday and Friday, December 30, 2019 and January 2 & 3, 2020

Ages: 9 - 16

	<u>Number</u>	<u>Fee</u>	<u>Time</u>
Full Day	360804-02	\$105/week/child	9:00 a.m. - 4:00 p.m.
Before Care	362402-01	\$ 20/week/child	7:00 a.m. - 9:00 a.m.
After Care	362403-01	\$ 20/week/child	4:00 p.m. - 6:00 p.m.

Day Camps – Spring Break

Kool Dayz Spring Camp

Pacific Community Center
501 S. Pacific Ave., Glendale, CA 91204
For information, call (818) 548-4098.

Kids will have fun making crafts, playing sports and games, competing in contests and making new friends. Campers must provide their own lunch, drink and snacks daily.

5-Day Camp

Dates: Monday - Friday, March 16 - 20, 2020

Ages: 6 - 12

	<u>Glendale Resident Fees</u>	<u>Non-Resident Fees</u>	<u>Times</u>
Day Long	\$85/week/child	\$100/week/child	9:00 a.m. - 4:00 p.m.
Before Care	\$20/week/child	\$ 20/week/child	7:00 a.m. - 9:00 a.m.
After Care	\$20/week/child	\$ 20/week/child	4:00 p.m. - 6:00 p.m.



www.glendaleca.gov/parks

Day Camps – Spring Break

Travelin' Teens Spring Camp

Pacific Community Center
501 S. Pacific Ave., Glendale, CA 91204
For information, call (818) 548-4098.

Teen campers will explore fun Glendale locations and surrounding communities by foot or using local bus lines. Teens will make new friends, go on a field trip, and chill with other teens. Campers must provide their own lunch, drink, and snacks daily.

5-Day Camp

Dates: Monday - Friday, March 16 - 20, 2020

Ages: 12 - 14

	<u>Glendale Resident Fees</u>	<u>Non-Resident Fees</u>	<u>Times</u>
Day Long	\$85/week/child	\$100/week/child	9:00 a.m. - 4:00 p.m.
Before Care	\$20/week/child	\$ 20/week/child	7:00 a.m. - 9:00 a.m.
After Care	\$20/week/child	\$ 20/week/child	4:00 p.m. - 6:00 p.m.



Sparr-Tacular Spring Camp

Sparr Heights Community Center
1613 Glencoe Way, Glendale, CA 91208
For information, call (818) 548-2187.

Flowers are blooming and Spring Break fun is here at the Sparr Heights Community Center! Children ages 5 - 12 will enjoy games, crafts, and a special treat on Friday. Children must bring a sack lunch Monday through Thursday.

5-Day Camp

Dates: Monday - Friday, March 16 - 20, 2020

Ages: 5 - 12

<u>Glendale Fees</u>	<u>Non-Resident Fees</u>	<u>Times</u>
\$65/week/child	\$80/week/child	12:00 p.m. - 6:00 p.m.

Glendale Youth Alliance



Make a difference in our community by investing in our local youth and hiring through GYA!

Business Owners



Complete the **Glendale Youth Alliance Position Request form** on the back of this flyer and mail to:
Laura Isaacs at The Verdugo Jobs Center at 1255 S. Central Ave. Glendale CA 91204



For more information contact Laura Isaacs at (818) 937-8057 • Lisaacs@GlendaleCA.gov

A Partnership Between Government, Education, Business & Community - Providing Employment Opportunities For Youth - A California Nonprofit Corporation • Tax ID# 95-4453385
www.glendaleyouthalliance.org

Need additional help with your operations?

Hire through the GREAT program, and we can place an employee in a short time frame. It's easy and hassle free. GYA will provide pre-screened youth, cover the workers' compensation insurance and payroll. Your business will be billed bi-monthly for the youth wages. Call us today at (818) 937-8056.

For more information about GYA programs, please call (818) 937-8073, or visit us at www.glendaleyouthalliance.org.

Like us on Facebook and stay connected!

Private Property Owners



Hire our supervised teams to perform hillside brush clearance on your property for a reasonable fee. GYA teams can also be hired for other general labor tasks. All work teams are fully insured, supervised and have their own tools and transportation. Reasonable Prices! Quality of work guaranteed!

Services Available:

- Hillside clearance
- Yard maintenance
- Landscaping
- Brush abatement & clearance
- Property clean up and general labor tasks
- Mudslide prevention work

For a free estimate, call (818) 548-3727.



Youth & Family Services

YOUTH & FAMILY SERVICES PROGRAM

Pacific Community Center, 501 S. Pacific Ave., Glendale, CA 91204

Hours: Monday - Friday, 9:00 a.m. - 6:00 p.m. For more information, call (818) 937-7247.

The Youth & Family Services Program is designed to provide free information and referral services to at-risk youth and their families. The program supports the family unit by providing guidance in decision-making and connecting individuals with supportive services in the community.

Eligibility:

Youth 13 - 17 years of age and young adults 18 - 21.

No income or residency requirements.

Self-referrals and referrals from local agencies are accepted.

Services provided:

Information & referral, transportation support, utility assistance, connecting individuals to community providers regarding a variety of social issues which include, but are not limited to: employment, community service, health & wellness, housing/unstable living situations, and legal matters.

Juvenile Ultimatum Service Training (J.U.S.T) - A service component that provides youth the opportunity to complete mandated community service hours through a balanced and restorative justice, community service learning, community protection and competency development process.

GLENDALE TEEN NIGHT OUT



Glendale Teen Night Out is designed to provide FREE activities that include billiards, ping pong, karaoke, PS4, and educational workshops. Workshops cover topics that include teen vaping, cyberbullying, health and wellness, and many others for teens ages 13-17. Light refreshments provided.

Community Center Youth Activity Card required to participate. Youth Activity Cards are FREE.

For more information, please call (818) 937-7243.

Location: Pacific Community Center
501 S. Pacific Ave.
Glendale, CA 91204

Day: Every Other Friday

Time: 5:00 p.m. - 9:00 p.m.

Youth & Family Services



COMMUNITY COLLEGE OR UNIVERSITY?

Friday, November 22, 2019 @ 6:00 P.M.

Pacific Community Center

**501 S. Pacific Ave.
Glendale, CA 91204**

Glendale Community College presents:

An informational workshop on how to apply for college. GCC will explain the difference between a Community College and a four year University along with the importance of applying for scholarships, and how to plan ahead both financially and academically.

For questions or more information, call **(818) 937-7240**.



CITY OF GLENDALE
COMMUNITY SERVICES & PARKS
Youth & Family Services Section



**Parks
Make
Life
Better!**



@MyGlendaleTeens #MyGlendaleTeens

Disclaimer: The City of Glendale's Community Services & Parks Department is not affiliated with the presenting organization, but the department has allowed the organization to use the City facility. All topics and speakers are presented for informational purposes. The organization's or speaker's information, advice, views, opinions, or services do not necessarily reflect or represent the official policy or position of the City and its Community Services & Parks Department.



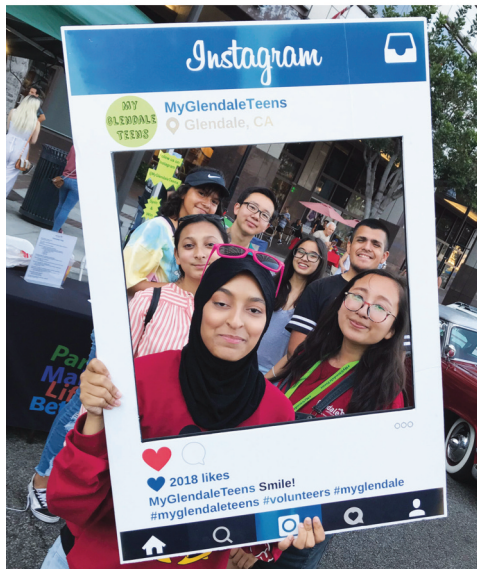
Reasonable accommodations will be made upon request.
Please notify us within 72 hours prior to event date.



www.glendaleca.gov/parks

Youth & Family Services

**FOLLOW
US ON**



@MyGlendaleTeens

@MyGlendaleTeens Now on Instagram!

Follow us on Instagram to find out the latest information on volunteer opportunities, job opportunities, special events, educational workshops, and places for teens to hang out!

You can also receive the latest updates on the City of Glendale by following @MyGlendaleTeens.

For more information, please call Jackie at
(818) 937-7243.

Become a Teen Volunteer

Want to volunteer?

1. Are you at least 14 years old?
2. Can you commit to 50 hours per year?
3. Do you have one of the following forms of identification?
 - California Driver License
 - California Identification Card
 - U.S. Passport
 - Military Identification Card
 - Green Card
4. Can you volunteer on weekends?

If you answered yes to all of the above, please call Jackie at (818) 937-7243, or e-mail her at jbaliton@glendaleca.gov to schedule an appointment.



Drop-In Programs

THERAPEUTIC RECREATION FOR YOUTH AND ADULTS

Maple Park Community Center, 820 E. Maple St., Glendale, CA 91205

For program information, please call (818) 548-3783.



Get Fit

Get Fit is a free program designed to improve the health status of adults with intellectual disabilities by focusing on nutrition, healthy meal planning, monthly weigh-ins and measurements, stretching and conditioning. Activities are age and skill appropriate.

Day: Mondays

Time: 5:00 p.m. – 7:00 p.m.

Club Maple

Club Maple is a free program open to adults with intellectual disabilities which provides an opportunity for individuals to experience positive, healthy, recreational, cultural, educational, and social experiences. Activities are age and skill appropriate.

Day: Thursdays

Time: 5:30 p.m. - 8:00 p.m.

Maple Inclusive Play Day

Maple Inclusive Play Day (MIP Day) creates an opportunity for families with children of all abilities to come to the park, network with each other and allow their children to socialize, all centered around the new Shane's Inspiration all-inclusive playground. Crafts appropriate to all abilities will be available.

Day: Third Saturday of each month

Dates: November 16, 2019, December 21, 2019, January 18, 2020, February 15, 2020

Time: 11:00 a.m. - 1:00 p.m.

**We are recruiting volunteer fitness, wellness, and nutrition instructors.
For information, please call (818) 548-3783.**

SPECIAL NEEDS ACCOMMODATIONS

The Community Services & Parks Department will provide any reasonable accommodation upon request. Please contact us at (818) 548-3783 at least 72 hours prior to the start of the event.

Drop-In Programs

YOUTH PROGRAMS

Tot Time

Tot time is a FREE drop-in program for preschoolers (ages 5 and under) and their parents. The center provides play equipment and toys while parents provide the supervision. No registration required.

Location: Maple Park Community Center, 820 E. Maple St., Glendale, CA 91205

Days: Mondays and Wednesdays

Time: 10:00 a.m. - 12:00 p.m.

For program information, please call (818) 548-3694.

Location: Pacific Community Center, 501 S. Pacific Ave., Glendale, CA 91204

Days: Tuesdays and Thursdays

Time: 10:00 a.m. - 12:00 p.m.

Pacific Park Library offers stories and crafts on Thursdays from 10:30 a.m. - 11:00 a.m.

For program information, please call (818) 548-4098.

Maple Park and Sparr Heights After School Club

The After School Clubs at Maple Park and Sparr Heights Community Centers are free and fun drop-in after school programs for children ages 8 to 17. Recreation Leaders provide general supervision and programming. Maple Park Community Center offers a recreation room with foosball, ping pong, air hockey, and other gaming activities. There is a computer lab with internet and video games. There is also a full-court gymnasium which offers drop-in basketball for youth. Sparr Heights Community Center offers lots of activities within the center including Table Tennis, Wii, Karaoke, Billiards, and other gaming activities. The entire center has FREE WiFi. Our Garden Room and South Patio are excellent locations to do homework.

Location: Maple Park Community Center, 820 E. Maple St., Glendale, CA 91205

Days: Monday through Friday

Time: 2:00 p.m. - 5:00 p.m.

For program information, please call (818) 548-3694.

Location: Sparr Heights Community Center, 1613 Glencoe Way, Glendale, CA 91208

Days: Tuesdays, Wednesdays, Thursdays

Time: 3:00 p.m. - 6:00 p.m.

A responsible adult/guardian must accompany all children under eight (8) years of age. This program is designed to provide supplemental activities for your child after school, and not to provide childcare.

For more information, please call (818) 548-2187.

Trails & Open Space Programs

VOLUNTEER WORKDAYS

For information, please call (818) 548-3795.

RIVERWALK WORKDAYS

Glendale Narrows Riverwalk

Corner of Paula Avenue and Garden Street

Saturdays: November 9, 2019 | January 11, 2020 | February 8, 2020

8:00 a.m. - 12:00 p.m.

Join us down by the riverside as we work to remove invasive plants from the landscaped areas along the L.A. River. Participants are asked to wear sturdy shoes, protective clothing, and a hat. We'll provide tools, gloves, drinks and snacks. Families, individuals, clubs, and students needing community service hours are welcome. Groups of 10 or more, please RSVP by calling (818) 548-3795.

WILDERNESS WORKDAYS

Deukmejian Wilderness Park

3429 Markridge Road

Saturdays: November 16, 2019 | January 18, 2020 | February 15, 2020

8:00 a.m. - 12:00 p.m.

Help us water our Douglas Firs and Coast Live Oaks, assist with trail repairs, and remove invasive species from the park. This program is perfect for students who need community service hours. Community and youth organizations are welcome. Please wear sturdy shoes, protective clothing and a hat. Drinks and snacks will be provided. Groups of 10 or more, please RSVP by calling (818) 548-3795.

LEND A HAND AT BRAND WORKDAY

Brand Park

1601 W. Mountain Street

Saturday, January 25, 2020

8:00 a.m. - 12:00 p.m.

Join us as we work in honor of Marc Stirdivant - City of Glendale employee, community activist, and wildlife advocate who passed away this year - to improve some of the neglected wilderness areas of Brand Park. Work may include trail maintenance, plant watering, and removal of invasive plants from the park. We have tasks for all ages and abilities. This event is perfect for families, individuals, groups, clubs and students needing community service hours. Please wear sturdy shoes, protective clothing and a hat. We'll provide the drinks and snacks. Groups of 10 or more, please RSVP by calling (818) 548-3795.



www.glendaleca.gov/parks

Trails & Open Space Programs

INTERPRETIVE HIKES AND PROGRAMS

For information or to RSVP, please call (818) 548-3795.

FRIDAY NIGHT LECTURE, "BIRDS OF PREY"

Deukmejian Wilderness Park

Friday, November 15, 2019

6:30 p.m. – 8:30 p.m.

A bird of prey, predatory bird, or raptor is any of several species of bird that hunt and feed on rodents and other animals. Join us as we learn about these birds and the adaptations that have made them such accomplished hunters. We will take an in-depth look at hawks, eagles, falcons, owls, and more. This event is FREE, but space is limited. You must call us at (818) 548-3795 to reserve your place.

BIRDWALK ON THE RIVERWALK

Glendale Narrows Riverwalk

Saturday, December 7, 2019

8:00 a.m. – 10:00 a.m.

Join us for a morning of bird watching along the banks of the Los Angeles River. See the many avian creatures that call the river their home. Bring a camera with a telephoto lens or a good pair of binoculars. Alexander deBarros of the San Fernando Valley Audubon Society will show you where to look. This event is FREE, but space is limited. You must call us at (818) 548-3795 to reserve your place.

HOLIDAY AT THE OLD STONE BARN

Deukmejian Wilderness Park

Saturday, December 14, 2019

5:30 p.m. – 7:30 p.m.

Come to the Old Stone Barn for Holiday caroling and dancing. We will serve hot chocolate, cookies and popcorn. More details coming soon. This event is FREE, but space is limited. You must call us at (818) 548-3795 to reserve your place.

FRIDAY NIGHT LECTURE, "BATS IN THE BELFRY"

Deukmejian Wilderness Park

Friday, January 31, 2020

6:30 p.m. – 8:30 p.m.

Dana Stangel, Executive Director of Teranga Ranch, is our speaker for a talk about California native bats. Did you know that bats are the ONLY mammal capable of true flight? This lecture will focus on the bats that live in our area - how they communicate and what they eat. We will also learn why we want to encourage bats in our yards. We'll even see if we can hear them with a high tech BAT DETECTOR! This event is FREE, but space is limited. You must call us at (818) 548-3795 to reserve your place.

Please remember to call (818) 548-3795 to RSVP or for more information.

All Trails and Open Space programs are sponsored by the Glendale Parks & Open Space Foundation.

JOIN OUR E-MAIL LIST!

Are you on the Trails & Open Space e-mail list? We send out flyers and calendars for all our events, programs, and meetings. Just email us at TrailOpenspace@GlendaleCA.gov, and tell us you want to be added to the Trails and Open Space list! We never make your e-mail address available to any other company or organization.

Verdugo Skate Park Programs



Verdugo Park (south end)
1621 Cañada Blvd.
Glendale, CA 91208
(818) 548-2786



FRIDAY NIGHT LIGHTS

Enjoy some of the newest skateboard videos on a big projection screen. There will be a raffle and one grand prize given away monthly. Free snack with the purchase of a raffle ticket. Free admission. *Dates and times are subject to change.*

Day: January 17, February 21, March 20, 2020
Time: 5:30 p.m. - 8:30 p.m.

BEGINNING SKATE CLASSES

Skaters will be introduced to the following fundamentals: Safety procedures, which involve the proper use of safety equipment; falling techniques; and basic skills like balance, stance, pushing, and turning. There is a minimum of three participants and a maximum of eight participants per class. **All skaters must provide their own helmet, skateboard, and elbow and knee pads.**

6 WEEKS

Fee: \$100
Dates: Sundays, January 19 - February 23, 2020
Times: 9:00 a.m. - 10:00 a.m.

INTERMEDIATE SKATE CLASSES

Skaters will continue to master the following fundamentals: Safety procedures, which involve the proper use of safety equipment; falling techniques; basic skills like balance, stance, pushing, and turning. They will also work on ollieing and begin to learn tricks. There is a minimum of three participants and a maximum of eight participants per class. **All skaters must provide their own helmet, skateboard, and elbow and knee pads.**

6 WEEKS

Fee: \$100
Dates: Saturdays, January 18 - February 22, 2020
Times: 9:00 a.m. - 10:00 a.m.

DROP-BY SKATE CLASSES

We offer scheduled drop-by beginning skate classes. Beginners will learn the proper stance and balance. Registration for drop by skate classes will be accepted **ONLY** at the Verdugo Skate Park on the day class is offered on a first come, first serve basis. There is a maximum of five participants per class. **All skaters must provide their own helmet, skateboard, and elbow and knee pads.**

Fee: \$20 per class
Days: Mondays, Wednesdays & Fridays
Times: 4:00 p.m. - 5:00 p.m.

Verdugo Skate Park Programs

SKATE PARK

Verdugo Park (south end)
1621 Cañada Blvd.
Glendale, CA 91208
(818) 548-2786

HOURS OF OPERATION:

Year Round Hours:

Monday – Friday: 4:00 p.m. - 9:00 p.m. (for all ages)
Saturday: 10:00 a.m. - 12:00 p.m. (14 & under*)
12:00 p.m. - 9:00 p.m. (for all ages)
Sunday: 10:00 a.m. - 9:00 p.m. (for all ages)

**From 10:00 a.m.-12:00 p.m. on Saturdays, parents may skate with their children for instructional purposes. This is at the safety discretion of skate staff.*

FEES:

	Youth (17 & Under) & Resident Adults (18 & Over)	Non-Resident Adults (18 & Over)
Daily Entry	Free	\$ 4
Monthly Pass	Free	\$40
Annual Pass	Free	\$75

FEATURES:

15,000 square foot concrete facility: 6 - 9 foot Clover Bowl with 11 foot Over-Vert section, 6 - 10 foot Kidney Pool, Street Plaza with rails and ledges, and a Snake Run that empties into a 9 foot bowl with a Loveseat.

**ALL PERSONS ENTERING THE PARK MUST WEAR A HELMET,
KNEE PADS AND ELBOW PADS.**

All skaters must have a valid release of liability form on file.
(Youth ages 17 and under are required to have parent/guardian signature.)

BMX bikes, scooters or other coasting devices are NOT permitted.

Follow us on Twitter
[@verdugosk8park](https://twitter.com/verdugosk8park)



Contract Class Information

WINTER 2020 SESSION DATES

Enrollment begins: **November 11, 2019**

Classes begin: **January 6, 2020**

Last day to enroll for open classes: **January 18, 2020**

(Classes that do not meet the minimum number of students may be cancelled.)

See Page 45 for Registration Information, or call (818) 548-2184.

CLASS LOCATIONS

Adult Recreation Center (ARC)

Central Park Complex
201 E. Colorado St.
Glendale, CA 91205

Chevy Chase Library

3301 E. Chevy Chase Dr.
Glendale, CA 91206

Joe Bridges Clubhouse

(In Glenoaks Park)
2531 E. Glenoaks Blvd.
Glendale, CA 91206

Sparr Heights Community Center

1613 Glencoe Way
Glendale, CA 91208

Glorietta Park

2801 N. Verdugo Rd.
Glendale, CA 91208

Crescenta Valley High School

2900 Community Ave
La Crescenta, CA 91214

Brand Teahouse

1601 W. Mountain St.
Glendale, CA 91201

Dunsmore Community Building & Park

4700 Dunsmore Ave.
La Crescenta, CA 91214

Maple Park Community Center

820 E. Maple St.
Glendale, CA 91205

Glendale Sports Complex

2200 Fern Lane
Glendale, CA 91208

Montrose Park

3529 Clifton Pl.
Glendale, CA 91208

Glendale Community College

1500 N. Verdugo Rd.
Glendale, CA 91208

Brand Studios

1601 W. Mountain St.
Glendale, CA 91201

Griffith Manor Community Building & Park

1551 Flower St.
Glendale, CA 91201

Pacific Community Center & Pool

501 - 509 S. Pacific Ave.
Glendale, CA 91204

Verdugo Skate Park

3800 E. Glenoaks Blvd.
Glendale, CA 91206

Scholl Canyon Golf & Tennis

3800 E. Glenoaks Blvd.
Glendale, CA 91206

Hoover High School

651 Glenwood Rd.
Glendale, CA 91202

Youth Classes

YOUTH ART

BASICS OF FIGURE DRAWING

Classes include learning the basic anatomical proportions of human figures and gesture drawings. Students will draw from life by taking 3-5 minute turns posing. Figure development will move on to cartooning and caricatures. Various drawing materials will be used in a variety of formats and papers from small to large. Parents are also encouraged to enroll.

\$20 material fee is payable to instructor on first day of class. No class March 2, 2020. Classes will be held on holidays, January 20, 2020 and February 17, 2020.

8 Weeks		Fee: \$80	Instructor: Ann Marie Smith
Ages 12 & up	330501-02	Brand Studios	1/13 M 5:30 p.m. - 6:30 p.m.

DRAWING, PAINTING AND MIXED MEDIA

Classes include basic drawing, 3D shapes and shading in tonal drawings and compositions of still life set-ups. Color theory will be discussed and used in projects with a focus on Master Artist work for reference. Various art media will be used in various formats and surfaces. Art Show on final day of class.

\$20 material fee is payable to instructor on first day of class.

10 Weeks		Fee: \$100	Instructor: Ann Marie Smith
Ages 6 - 14	330501-03	Chevy Chase Library	1/8 W 5:30 p.m. - 6:30 p.m.

DEMONSTRATION PAINTING

Instructor will demonstrate painting still life set-ups, landscapes and portraits in various styles and mixed media to model techniques for students to create their own paintings. Master Artists' work and photo references on composition, color harmonies and new approaches will be explored. Canvas and watercolor paper will be used. Student Art Show on the last day of class.

\$20 material fee is payable to instructor on first day of class.

10 Weeks		Fee: \$100	Instructor: Ann Marie Smith
Ages 6 - 14	330501-01	Brand Studios	1/9 Th 5:00 p.m. - 6:15 p.m.

PARENT AND CHILD ART

Adult and child share creative time together using paint, paper, clay and found objects. Students will learn basic art techniques and vocabulary while painting, printmaking, clay making, creating collage and fantasy crafting. The instructor encourages freedom of expression and creativity. Classes also include games, songs, sharing books, story time, and show and tell.

\$10 material fee is payable on the first day of class.

8 weeks		Fee: \$85	Instructor: Aleka Corwin
Ages 2 - 5	330502-01	Brand Studios	1/16 Th 11:00 a.m. - 12:00 p.m.

Youth Classes

SYLVAN LEARNING

OUTER SPACE ROBOTICS

Kids will build and program robots on this galactic adventure. They will develop new STEM skills with hands-on building with LEGO®, programming, critical thinking, and teamwork.

6 weeks

Ages 6 - 12 330905-01

Fee: \$149

Brand Studios

Instructor: Sylvan Learning

1/8 W

3:30 p.m. - 4:30 p.m.

CODING: GAME DESIGN 101

Learn basic programming through animation and video game design.

6 weeks

Ages 9 - 14 330906-01

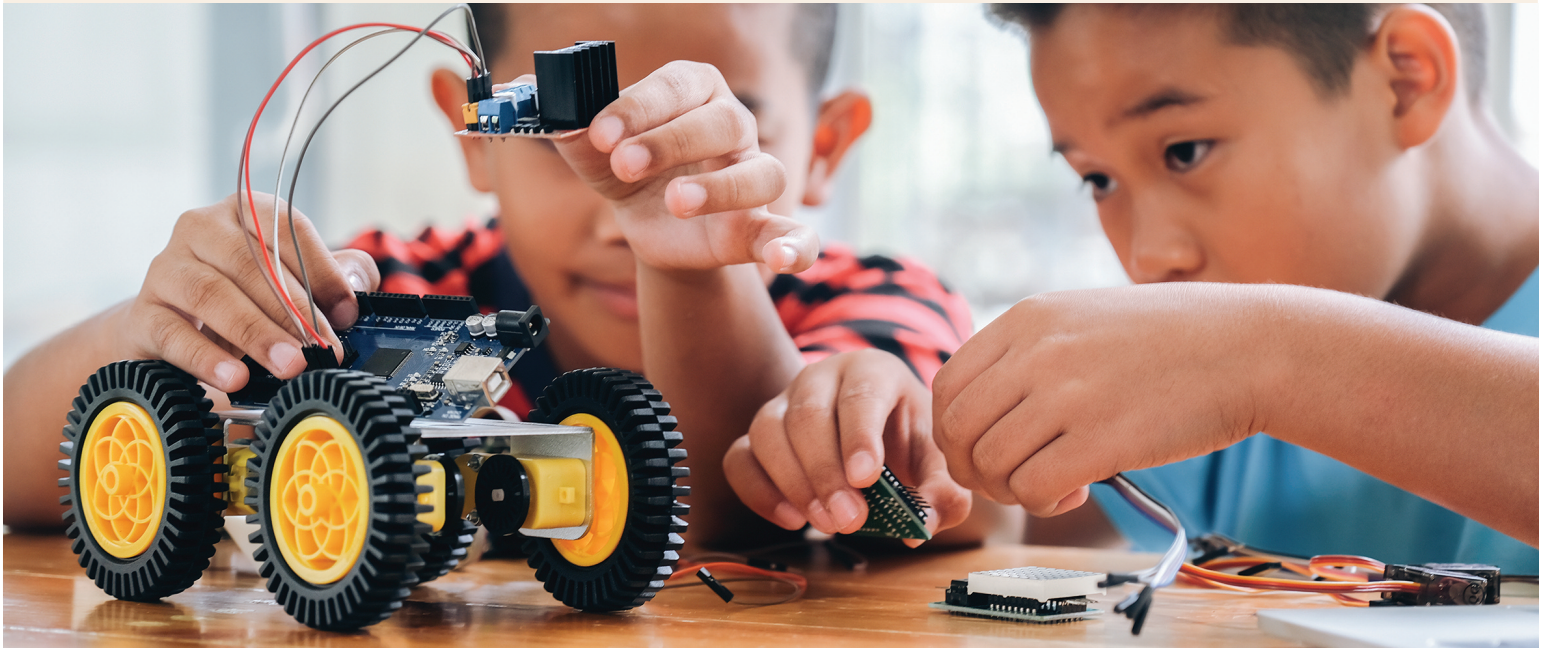
Fee: \$149

Brand Studios

Instructor: Sylvan Learning

1/8 W

5:00 p.m.- 6:00 p.m.



STEM

MAD SCIENCE 2, READY, SET, SCIENCE

Are you ready to get engrossed in entomology, the study of bugs? To investigate and analyze crime scene evidence to solve a mystery? To DIG into Earth Science? Students will see what physical and chemical changes take place in and around your kitchen and discover how simple machines make our lives easier. Movie Effects gives you a chance to sit in the director's chair and discover why science is the real star of the big screen. What makes toys work? Test and play with spinning tops, building gears, and gravity toys. Finally, conduct hands-on experiments to understand how and why weather occurs!

8 weeks

Ages 5 - 11 360504-01

Fee: \$168

Pacific CC

Instructor: Kim McAlpine

1/9 Th

6:00 p.m. - 7:00 p.m.

www.glendaleca.gov/parks

Youth Sports

MAXIMUM POTENTIAL BASKETBALL

Hoopapalooza is designed to help improve an individual's strength, knowledge, and overall development of basketball. Join this class TODAY and you will be able to fulfill your aspirations. Learn the basics and advanced movements of the game. We will also cover dribbling, passing, shooting, and agility. ALL SKILL LEVELS ARE WELCOME!!!!

Mark Herring of Hoopapalooza Inc will be the instructor. Coach Herring is a native of North Carolina and has worked with the likes of Coach Krzyzewski ("Coach K", Duke University's Men's Basketball Team), Kobe Bryant, Carmelo Anthony, and other NBA Stars. COME JOIN THE FUN!!!!

6 weeks

Ages 10 - 16 360601-01

Fee: \$150

Pacific CC

Instructor: Mark Herring

1/9 Th 5:00 p.m. – 6:00 p.m.



YOUTH TENNIS CLASSES

For program information, call (818) 937-7440.

To register, call (818) 548-2184.

Students will learn stroke development, drills, and singles and doubles strategy.

Bring water and a tennis racket to each class meeting. In addition, please bring \$5 cash equipment fee; exact change only.

LOCATIONS: Montrose Park, 3529 Clifton Pl., Glendale, CA 91208
Scholl Canyon Golf & Tennis, 3800 E. Glenoaks Blvd., Glendale, CA 91206

8 WEEKS

FEE: \$ 75 Young Beginners
 \$100 Beginning & Intermediate

AGES: 4 – 7

AGES: 8 – 17

DATES: Tuesdays, January 7 – February 25, 2020
 Thursdays, January 9 – February 27, 2020
 Saturdays, January 11 – February 29, 2020

SKILL LEVEL: YOUNG BEGINNERS (4-7 years)

<u>Number</u>	<u>Day of Week</u>	<u>Location</u>	<u>Time</u>
341102-01	Thursdays	Montrose Park	3:15 p.m. – 4:00 p.m.
341102-02	Saturdays	Scholl Canyon	1:15 p.m. – 2:00 p.m.

SKILL LEVEL: BEGINNING (8-17 years)

<u>Number</u>	<u>Day of Week</u>	<u>Location</u>	<u>Time</u>
341103-01	Tuesdays	Montrose Park	4:00 p.m. – 5:00 p.m.
341103-02	Thursdays	Montrose Park	4:00 p.m. – 5:00 p.m.
341103-03	Saturdays	Scholl Canyon	2:00 p.m. – 3:00 p.m.

SKILL LEVEL: INTERMEDIATE (8-17 years)

<u>Number</u>	<u>Day of Week</u>	<u>Location</u>	<u>Time</u>
341104-01	Tuesdays	Montrose Park	5:00 p.m. – 6:00 p.m.
341104-02	Thursdays	Montrose Park	5:00 p.m. – 6:00 p.m.

Youth Sports



BEGINNERS EDGE SPORTS TRAINING (BEST) CLASSES

For program information, call (818) 937-7440.

To register, call (818) 548-2184.

BEST 4-SPORT MULTI-SPORT

(Soccer, Baseball/Softball, Basketball, Track & Field)

The 4-Sport program brings you multiple weeks of 4 fantastic sports: Soccer, Baseball/Softball, Basketball & Track. We will teach your player how to kick and control a soccer ball, how to hit, catch, throw and run the bases, and running, jumping and building strength + endurance in our Track & Field program. Our goal and focus is to maintain an energetic & highly active program that will teach, encourage and advance your young players regardless of their skill level. Please bring an age-appropriate soccer ball for the first week. A hitting tee is needed later in the session.

LOCATION: Verdugo Park (North End), Grass Area,
1621 Cañada Blvd., Glendale, CA 91208

8 CLASSES

FEE: \$119

DAY/SESSION DATES: Saturdays, January 18 – March 7, 2020

<u>Number</u>	<u>Class Title</u>	<u>Age</u>	<u>Time</u>
340801-02	4-Sport	2 - 4	9:50 a.m. – 10:35 a.m.
340801-01	4-Sport	4 - 7	9:00 a.m. – 9:45 a.m.
340801-03	4-Sport	7 - 10	10:40 a.m. – 11:25 a.m.

CHALLENGER SPORTS WINTER SOCCER

Join one of the largest fundamental soccer programs in Southern California. The Tiny Tykes program is a fantastic way to introduce your child to sport and caters to ages 2-5 years old!

Our soccer experts and child development professionals have designed an innovative curriculum that introduces your young soccer star to the basic skills needed in soccer as well as developing their motor, social, and psychological skills. All of our coaches are British, experts at working with young children and will combine soccer with fun games, stories and music that keep your children entertained and enthused to return the next week.

Come join our Cubs and Lions Program and join Lenny the Lion, our mascot, in a wonderful soccer adventure. Plus not only will you get an amazing experience in soccer, you will also receive a FREE UNIFORM & BALL when you register! For more information and our coaching philosophy, or details of the curriculum, please visit our website: www.challengersports.com.

8 WEEKS

FEE: \$100

DATES: Fridays, February 14 – April 3, 2020

LOCATION: Dunsmore Park, 4700 Dunsmore Ave., La Crescenta, CA 91214

<u>Number</u>	<u>Class Title</u>	<u>Age</u>	<u>Time</u>
341205-01	TinyTykes Cubs	2-3	9:30 a.m. - 10:15 a.m.
341205-02	TinyTykes Lions	4-5	10:30 a.m. - 11:15 a.m.

Youth Sports

KIDZ LOVE SOCCER

WWW.KIDZLOVESOCCER.COM



This instructional soccer experience includes age-appropriate activities, skill demonstrations, fun games, and instructional scrimmages conducted in a non-competitive, recreational format. This is perfect for first time players while being fun and engaging for kids with some experience. **Shin guards are required.**

Excessive Heat and Rainout Hotline #: (888) 372-5803. Call this number up to 30 minutes prior to any scheduled class to verify class status. If a class is cancelled due to weather and/or another City program, the class will be made up at the end of the session.

8 WEEKS

FEE: \$105

All participants will receive a soccer jersey.

TUESDAY CLASS LOCATION: Glorietta Park, 2801 N. Verdugo Rd., Glendale, CA 91208

DAY/SESSION DATES: Tuesdays, January 21 - March 10, 2020

<u>Number</u>	<u>Class Title</u>	<u>Age</u>	<u>Time</u>
341202-01	Tot/Pre Soccer	3.5 - 5	5:00 p.m. – 5:35 p.m.
341203-01	Soccer 1; Technique & Teamwork	5 - 6	4:15 p.m. – 5:00 p.m.
341204-01	Soccer 2; Skillz & Scrimmage	7 - 10	3:30 p.m. – 4:15 p.m.

SATURDAY CLASS LOCATION: Glorietta Park, 2801 N. Verdugo Rd., Glendale, CA 91208

DAY/SESSION DATES: Saturdays, January 25 – March 14, 2020

<u>Number</u>	<u>Class Title</u>	<u>Age</u>	<u>Time</u>
341201-01	Mommy/Daddy/Me	2 - 3.5	9:00 a.m. – 9:30 a.m.
341201-02	Mommy/Daddy/Me	2 - 3.5	9:35 a.m. – 10:05 a.m.
341202-02	Tot Soccer	3.5 - 4	10:15 a.m. – 10:45 a.m.
341202-03	Pre Soccer	4 - 5	10:45 a.m. – 11:20 a.m.
341203-02	Soccer 1; Technique & Teamwork	5 - 6	11:20 a.m. – 12:05 p.m.



Winter 2019-2020 Leisure Guide

Adult Classes

ADULT FITNESS/WELLNESS & DANCE

AIKIDO

Aikido is a peaceful, yet powerful Japanese martial art. This class is designed to teach students how to use an opponent's energy to gain control of a situation using beautiful and circular techniques. Great emphasis is placed on motion and the dynamics of movement.

10 Weeks	Fee: \$100	Instructor: Mark Adachi	
360401-01	Pacific CC	1/06	M, Th Sat
			7:00 p.m. - 8:30 p.m. 10:00 a.m. - 11:30 a.m.

YOGA by Yoga Circle Downtown



Postures (Asanas) stretch, tone and strengthen the entire skeletal system, working not only the body's frame, but the internal organs, glands and nerves as well. These postures are linked via a connective movement (Vinyasa) and powerful breath work. These breathing exercises (pranayama) refresh and cleanse the body and help to control the mind. The union (yoga) of these two forces (Asana and Pranayama), release physical and mental tension, liberating vast resources of energy with increased mental power, clarity and concentration. This practice, over time, will bring your being into peak physical and mental condition.

10 Weeks	Fee: \$150	Instructor: Knekoh Fruge	
330303-01	Chevy Chase Library	1/11	Sat
			9:00 a.m. - 10:00 a.m.

YOGA

Enjoy an Integrated approach to Yoga combining the aspects of Alignment, Repetitive Movement coordinated with the Breath to safely open the joints optimizing blood flow, and oxygenation to the joints and organs to maintain and enhance good health. The class starts with a breathing meditation to transition from the everyday world into a calm state before starting the class. From there we move on to seated classical yoga positions, kneeling and then standing positions. Class will end with a guided deep relaxation developing a calm mental attitude. Be sure to bring a yoga mat and dress comfortably for a good stretch. **No class March 3, 2020.**

8 Weeks	Fee: \$80	Instructor: Susan Quon	
330302-01	Brand Studios	1/21	T
330302-03	Brand Studios	1/22	W
			6:45 p.m. - 8:15 p.m. 10:30 a.m. - 12:00 p.m.

SPECIAL NEEDS ACCOMMODATIONS

The Community Services & Parks Department will provide any reasonable accommodation toward the inclusion of a participant. Please contact the Therapeutic Recreation Program supervisor at (818) 548-3783 at least 72 hours prior to the start of the program. Ample time is required to determine the needs for each request.

TEACHING OPPORTUNITIES

Contractual Instructors are needed to teach professional-quality classes for all ages and interests at a wide variety of locations throughout the City of Glendale. **Contact:** Norma Mower, (818) 937-7216

Adult Classes

ADULT VISUAL ARTS

WATERCOLOR FOR SERIOUS PAINTERS



This class is structured to teach you a more classical approach to the principals of painting and design in watercolor. You will learn various watercolor skills and painting techniques. Weekly demonstrations, experiments and practice will aide you in gaining a better mastery of the watercolor medium. Enthusiasm, basic watercolor skills and art materials are required.

A \$15 material fee for printed handouts is payable on the first day of class. No class on March 3, 2020.

8 Weeks
330101-01
330101-02

Fee: \$95
Brand Studios
Brand Studios

Instructor: Peggy Reid
1/14 T
1/14 T

9:00 a.m. - 12:00 p.m.
12:30 p.m. - 3:30 p.m.



WATERCOLOR FRESH AND LOOSE

In this class, painters will explore breaking free of careful, timid techniques to create stronger, more effective visual statements. The emphasis will be toward fostering individual progress and developing each artist's unique voice. Participants of every skill or experience level are welcome.

10 Weeks
330102-01

Fee: \$90
Brand Studios

Instructor: John Byram
1/10 F

9:00 a.m. - 12:00 p.m.

MIXED MEDIA (Open Studio)

This class allows students to learn from each other developing new visions and exploring new methods by using water mediums such as gesso, ink, acrylic and pastels. **No class on March 3, 2020.**

8 Weeks
330103-01

Fee: \$65
Brand Studios

Instructor: No Instructor
1/6 M

10:00 a.m. - 1:00 p.m.



Adult Sports

For program information, call (818) 937-7440.
To register, call (818) 548-2184.

ADULT TENNIS CLASSES

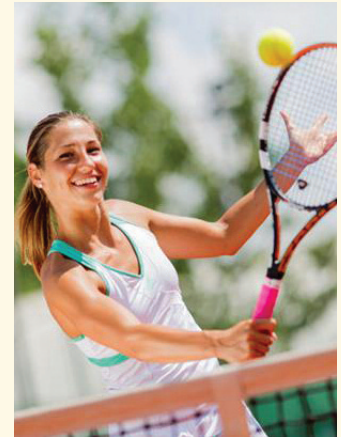
The classes will include stroke development, drills, and singles and doubles strategy. Students should bring water, a tennis racket, and a \$5 equipment fee, cash only. Please bring exact change.

8 WEEKS **FEE: \$100** **AGES: 18+**
Session Dates: Tuesdays, January 7 – February 25, 2020
 Thursdays, January 9 – February 27, 2020

Locations: **Montrose Park, 3529 Clifton Pl., Glendale, CA 91208**

SKILL LEVEL:	BEGINNING		
<u>Number</u>	<u>Day of Week</u>	<u>Location</u>	<u>Time</u>
341001-02	Tuesdays	Montrose Park	6:00 p.m. - 7:00 p.m.
341001-04	Thursdays	Montrose Park	6:00 p.m. - 7:00 p.m.

SKILL LEVEL:	INTERMEDIATE		
<u>Number</u>	<u>Day of Week</u>	<u>Location</u>	<u>Time</u>
341002-05	Tuesdays	Montrose Park	7:00 p.m. - 8:00 p.m.
341002-03	Thursdays	Montrose Park	7:00 p.m. - 8:00 p.m.



Activity Card Fee Schedule:

Senior Activity Cards (60 years of age and older)	\$10/year
Adult Activity Cards (18 - 59 years old)	\$25/year

Cards may be purchased at one of the following locations:

- Adult Recreation Center, 201 E. Colorado St., Glendale, CA 91204
- Glendale Sports Complex, 2200 Fern Lane, Glendale, CA 91208
- Maple Park Community Center, 820 E. Maple St., Glendale, CA 91205
- Pacific Community Center, 501 S. Pacific Ave., Glendale, CA 91204
- Sparr Heights Community Center, 1613 Glencoe Way, Glendale, CA 91208

ADULT OPEN PLAY BADMINTON

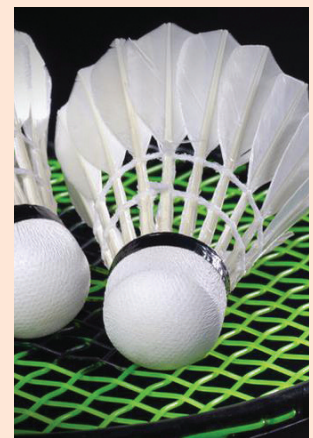
Join a sport that gives you a great aerobic workout! All skill levels are invited to participate!

LOCATION #1: **Glendale Community College (South Gym)**
 1500 N. Verdugo Rd., Glendale, CA 91208

Parking is available in Lot A. Dates are subject to Glendale College availability.

Fee: No daily fee. Activity Card is required (see fee schedule above).

Dates/Times: Mondays
 November 18, 2019 – June 8, 2020, 7:00 p.m. - 10:00 p.m.



Adult Sports



ADULT DROP-IN BASKETBALL

Open play basketball is available to adults of all skill levels in our gyms at Maple Park Community Center and Pacific Community Center. All skill levels are welcome to drop-in for a good workout by playing pickup games. **Ask for the drop-in calendar from the front desk to know when drop-in goes dark due to facility reservations and special events. Drop-in calendar is subject to change without notice. Please contact the Community Center for an up-to-date schedule.**

Fee:	Free for Activity Card Holders (see fee schedule on pg. 42), \$2 for Non-Activity Card Holders		
Location:	Maple Park Community Center 820 E. Maple St., Glendale, CA 91205		
Dates/Times:	Monday through Friday Saturdays	4:00 p.m. - 5:00 p.m. 9:00 a.m. - 5:00 p.m.	
Location:	Pacific Community Center 820 E. Maple St., Glendale, CA 91205		
Dates/Times:	Mondays and Thursdays Saturdays	5:00 p.m. - 8:00 p.m. 12:00 p.m. - 4:45 p.m.	

ADULT OPEN PLAY VOLLEYBALL

LOCATION #1:	Maple Park Community Center* 820 E. Maple St., Glendale, CA 91205		
Fee:	Free for Activity Card Holders (see fee schedule on pg. 42) \$2 for Non-Activity Card Holders		
Dates/Times:	Tuesdays, 6:00 p.m. - 9:00 p.m. (Ask for the drop-in calendar at the front desk to know when drop-in goes dark due to private reservations or special events.)		
LOCATION #2:	Hoover High School (East Gym)* 651 Glenwood Rd., Glendale, CA 91202		
Fee:	No daily fee. Activity Card is required (see fee schedule on pg. 42)		
Dates/Times:	September 9, 2019 - June 8, 2020 (Closed: 11/11/19, 11/25/19, 11/28/19, 12/23/19, 12/26/19, 12/30/19, 1/2/20, 1/6/20, 1/20/20, 2/10/20, 2/17/20, 2/20/20, 3/16/20, 3/19/20, 5/25/20) Dates are subject to Hoover High School availability		

**Release of liability form is due each calendar year. Maximum 42 person capacity per night. Teams will be established in groups of 6 based on the sign-in sheet.*



Adult Sports



MASTERS OPEN PLAY SOCCER (Ages 40+)

Get a healthy workout and meet new friends as you join other adult enthusiasts for casual pick-up games. This is a non-competitive, friendly play program. Pick-up games are available on Wednesday and Friday mornings.

Fee:	Activity Card holders only. \$2 per player per day (see fee schedule on pg. 42)
Dates/Times:	Wednesdays and Fridays, 7:30 a.m. - 9:30 a.m.
Location:	Glendale Sports Complex 2200 Fern Lane, Glendale, CA 91208

MASTERS OPEN PLAY SOCCER (Ages 60+)

On Tuesdays and Thursdays, the City offers causal pick-up soccer for adults over age 60 in both a walking and running format. Walking soccer is designed to get seniors on the field to stay physically active, but without the intensity of a regular game. The programs will be offered at different times to allow for safe and enjoyable games for both intensities.

Fee:	Activity Card holders only. \$2 per player per day (see fee schedule on pg. 42)		
Dates/Times:	Tuesdays and Thursdays,	Walking Soccer	10:00 a.m. - 11:00 a.m.
		Masters Soccer	11:00 a.m. - 1:00 p.m.
Location:	Glendale Sports Complex 2200 Fern Lane, Glendale, CA 91208		

Registration Information

ONLINE REGISTRATION

www.myglendaleparks.com

WALK-INS WELCOME

Visit Registration Locations mentioned below.



Contact the Customer Service Office
at (818) 548-2184
Monday – Friday, 8:30 a.m. - 5:00 p.m.

ONLINE REGISTRATION

Our online registration service allows you to register for activities through the internet **24 hours a day, 7 days a week**. Below you will find instructions that will help you establish a customer account, ID# and a password. Please read all the information online, especially sections regarding **residency and refunds**.

Step 1: Find our website: www.myglendaleparks.com

Step 2: Log in with your credentials. If you have never logged in before, set up an online account. Be sure to add all of your family members. If you have forgotten your login credentials, please call (818) 548-2184 or email CSPcustomerservice@glendaleca.gov.

Step 3: Browse activities. Click on Activity Search, and Search Activities.

Step 4: Select activities by clicking on the shopping cart icon.

Step 5: Pay for activities by clicking on Shopping Cart on the top right of your screen.

REGISTRATION REFUND POLICY

- Refunds are not available online.
- Contract classes or activities not reaching minimum numbers by the first week of classes may be cancelled and fees refunded. Service fees will not be refunded, in the event of class cancellation.
- Full refund, less an administrative fee, may be given if a refund is requested prior to start of programs/classes.
- Refunds requested after start of the program/class are contingent upon City approval and will only be considered through the conclusion of second week of scheduled class or second day of camp, and will be prorated.

For more information,
call (818) 548-2752 or (818) 548-2184.

REGISTRATION LOCATIONS:

Register for Classes & Camps at
any one of the following locations:

Civic Auditorium

(In person, phone, and online registrations
will be accepted.)

1401 North Verdugo Rd., Glendale, CA 91208
(818) 548-2752 or (818) 548-2184
www.myglendaleparks.com

Adult Recreation Center

Central Park Complex
201 E. Colorado St., Glendale, CA 91205
(818) 548-3775

Glendale Sports Complex

2200 Fern Lane, Glendale, CA 91208
(818) 548-6420

Maple Park Community Center

820 E. Maple St., Glendale, CA 91205
(818) 548-3783

Pacific Community Center & Pool

501-509 South Pacific Ave., Glendale, CA 91204
(818) 548-4098

Sparr Heights Community Center

1613 Glencoe Way, Glendale, CA 91208
(818) 548-2187

Verdugo Skate Park

1621 Cañada Blvd., Glendale, CA 91208
(818) 548-2786

GCC Senior Classes



SENIOR CLASSES: Glendale Community College Sponsored

Ages 60+: The City of Glendale, in partnership with Glendale Community College, is sponsoring several classes for seniors FREE of charge. For information or class registration, please call (818) 243-5196.

Winter Session Dates: January 6 - February 13, 2020

The following classes typically take place at the following locations/days/times:

ADULT RECREATION CENTER

201 E. Colorado Blvd., Glendale, CA 91205
(818) 548-3775

Lip Reading

Mondays & Thursdays, 9:30 a.m. - 11:00 a.m.
Location: Activity Room

Film Appreciation

Wednesdays, 1:00 p.m. - 4:00 p.m.
Location: Activity Room



Senior Classes

ADULT RECREATION CENTER

201 E. Colorado St., Glendale, CA 91205

For more information, call (818) 548-3775.

The City of Glendale Community Services & Parks Department is sponsoring the following classes for seniors ages 60+.

Fee Schedule: \$1 per class, payable at the beginning of each class. Activity card holders only. (Card must be presented upon payment.)

Activity Card Fee:

Senior Activity Cards (60 years of age and older) \$10/year

Adult Activity Cards (18 - 59 years old) \$25/year

ALL CLASSES ARE ONGOING. YOU MAY REGISTER AT ANY TIME.

Muscle Toning with Weights

Get Moving! There are mental and physical benefits from exercising regularly. Increase your energy, strength and bone density.

Fee: See fee schedule above.

Days	Time	Instructor
Mondays & Wednesdays	9:00 a.m. - 10:00 a.m.	Anne Kido
Tuesdays	8:00 a.m. - 9:00 a.m.	Patricia Kriste
Fridays	9:00 a.m. - 10:00 a.m.	Patricia Kriste

Senior Aerobics

Increase your energy and reduce your stress! Join us for a fun, low-impact aerobics class that will help improve flexibility and strength.

Fee: See fee schedule above.

Days	Time	Instructor
Mondays	8:00 a.m. - 9:00 a.m.	Patricia Kriste
Tuesdays & Thursdays	9:00 a.m. - 10:00 a.m.	Patricia Kriste

Zumba

Join us for this fun and exciting class, where you will dance to great music, meet great people, and burn a ton of calories without even realizing it.

Fee: See fee schedule above.

Days	Time	Instructor
Wednesdays & Fridays	8:00 a.m. - 9:00 a.m.	Denise Gonzalez

Tai-Chi for Seniors

Tai-Chi's slow dance-like movements bring balance, harmony and relaxation to participants. Come and learn the principles of this ancient form of exercise. The class meets in the Tai Chi Garden.

Fee: FREE. Activity Card Holders Only. See Activity Card fee schedule above.

Days	Time
Tuesdays, Thursdays, & Saturdays	10:00 a.m. - 11:00 a.m.

Senior Classes

PACIFIC COMMUNITY CENTER

501 S. Pacific Ave, Glendale, CA 91204
For more information, call (818) 548-4098.

Activity Card Fee:

Senior Activity Cards (60 years of age and older)

\$10/year

Adult Activity Cards (18 - 59 years old)

\$25/year

HEALTH EXERCISE

Keep active and stay young at heart. Improve muscle tone, strength, and coordination. Fridays are Fun Fridays! Enjoy a mix of exercise and beginning line dancing.

Instructor: Carol Thomsen

Days: Mondays, Wednesdays, and Fridays

Time: 9:30 a.m. - 12:00 p.m.

Fee: Activity Card Holders \$3 per class
Non-Activity Card Holders \$6 per class.



LINE DANCING

Learn to line dance and exercise at the same time!

Instructor: Pauline Wong

Days: Monday

Time: 12:30 p.m. - 2:30 p.m.

Fee: Activity Card Holders \$2 per class
Non-Activity Card Holders \$4 per class.

PICKLEBALL

Come out and try this new sport, make some friends and see what everyone is talking about.

All Levels and Ages Welcome
Coaching Available for Beginners
Paddles Available

3 Outdoor Courts

Days and Times:	Mondays	9:00 a.m. - 12:00 p.m. 6:00 p.m. - 9:00 p.m.
	Tuesdays	9:00 a.m. - 12:00 p.m.
	Wednesdays	9:00 a.m. - 12:00 p.m. 6:00 p.m. - 9:00 p.m.
	Thursdays	9:00 a.m. - 12:00 p.m.
	Saturdays	9:00 a.m. - 12:00 p.m.



4 Indoor Courts

Days and Times:	Tuesdays	6:00 p.m. - 9:00 p.m.
------------------------	----------	-----------------------

Senior Classes

SPARR HEIGHTS COMMUNITY CENTER

1613 Glencoe Way, Glendale, CA 91208
For more information, call (818) 548-2187.

The City of Glendale Community Services & Parks Department is sponsoring the following classes for seniors ages 60+.

Fee Schedule: Activity Card Holders \$1 per class
Non-Activity Card Holders \$2 per class, collected at the beginning of each class.

Activity Card Fee:

Senior Activity Cards (60 years of age and older)	\$10/year
Adult Activity Cards (18 - 59 years old)	\$25/year

ALL CLASSES ARE ONGOING. YOU MAY REGISTER AT ANY TIME.



Senior Fitness & Weight Training

There are mental and physical benefits from exercising regularly. Increase your energy, strength, and bone density.

Fee: See fee schedule above.
Instructor: Yvonne Longo

Session 1: Mondays, Wednesdays & Fridays	9:30 a.m. - 10:30 a.m.
Session 2: Mondays and Wednesdays	10:30 a.m. - 11:30 a.m.

Specialty Fitness with Yvonne

This exercise class designed for adults with intellectual disabilities encourages participants to get into shape by learning the fundamentals of basic exercise routines. Caregivers are welcome to work out alongside participants.

Fee: See fee schedule above.
Instructor: Yvonne Longo
Days/Time: Fridays 10:30 a.m. - 11:30 a.m.



Tai Chi for Seniors - Drop-In

Learn how to relax while learning this ancient form of exercising.

Fee: See fee schedule above.
Instructor: John Yee
Days/Time: Mondays, Wednesdays & Fridays 8:40 a.m. - 9:20 a.m.

Gentle Senior Yoga

This yoga class is geared to seniors to promote gentle stretching, balancing movements, and breathing techniques. Learn the skills necessary to relax and meditate to increase physical and mental health.

Fee: See fee schedule above.
Instructor: Rosalie Blum
Days/Time: Tuesdays 9:00 a.m. - 10:00 a.m.
Thursdays 9:00 a.m. - 10:00 a.m.



Activities for Seniors

SPARR HEIGHTS COMMUNITY CENTER

1613 Glencoe Way, Glendale, CA 91208
For more information, call (818) 548-2187.

Activity Card Fee:

Senior Activity Cards (60 years of age and older)

\$10/year

Adult Activity Cards (18 - 59 years old)

\$25/year

The following activities are available to Activity Card holders only. No additional fee.

Woodcarving Class

Bring your favorite tools, create a work of art, and enjoy the companionship of like-minded folks.

Day/Time: Thursdays 10:00 a.m. - 11:00 a.m.



Bridge

Senior bridge players of all skill levels and experience can come to the center and participate in competitive bridge games.

Day/Time: Mondays 9:00 a.m. - 11:30 a.m.

Bingo

If you were born to yell, "BINGO!", come out and enjoy an exciting game of senior bingo for prizes and socialization.

Day/Time: Wednesdays 12:30 p.m. - 1:30 p.m.



Activities for Seniors

ADULT RECREATION CENTER

201 E. Colorado St., CA 91205

For more information, call (818) 548-3775.

The following activities are available to Activity Card holders only.



Exercise Room at the Adult Recreation Center

The Adult Recreation Center offers a wide selection of fitness equipment including treadmills, cross-trainers, and stationary bikes along with numerous multifunction machines. Proper workout clothes and a towel is required.

An additional ARC Gym Membership is required.

Fee Schedule:

Senior Activity Cards (60 years of age and older)	\$10/year
Adult Activity Cards (18 - 59 years old)	\$25/year
Senior ARC Gym Membership	\$50/year plus an Activity Card
Adult ARC Gym Membership	\$80/year plus an Activity Card

Exercise Room Hours

Monday - Thursday	8:00 a.m. - 7:30 p.m.
Fridays & Saturdays	8:00 a.m. - 4:30 p.m.
Sundays	Closed

Open Play Table Tennis

No matter what your skill level or how long it has been since you held a paddle, the time has come to play some ping pong. Make new friends and get a work out while having fun.

Days/Time:	Mondays, Tuesdays, Wednesdays	3:00 p.m. - 7:30 p.m.
	Thursdays	5:30 p.m. - 7:30 p.m.
	Fridays	3:00 p.m. - 4:30 p.m.

Location: ARC Dining Hall



ARC Bridge Club

Millions of people play bridge worldwide. Bridge is a trick-taking game using a standard deck played by four players.

Days/Time:	Duplicate Bridge	Tuesdays, Thursdays, Saturdays	11:30 a.m. - 4:30 p.m.
	Beginning Bridge	Fridays	1:00 p.m. - 3:00 p.m.

Location: Activity Room and/or Multi-Purpose Room B

Activities for Seniors

ADULT RECREATION CENTER

The following activities are available to Activity Card holders only.



Drop-In Billiards, Backgammon, Chess, and Dominos

You can drop in Monday through Saturday to play some billiards, backgammon, Chess or dominos.

Hours may change based on room availability

Days/Time: Mondays – Thursdays 8:00 a.m. - 7:30 p.m.
Fridays and Saturdays 8:00 a.m. - 4:30 p.m.

Location: Multi-Purpose Room A

Bingo

Make new friends while playing this timeless classic.

Activity Card Holders: \$1 for 2 cards; Non Activity Card Holders: \$2 for 2 cards.

Days/Time: Tuesdays & Fridays 10:00 a.m. - 11:00 a.m.

Location: Multi-Purpose Room A



Karaoke

Make new friends while playing this timeless classic.

Days/Time: Tuesdays & Fridays 1:00 p.m. - 4:00 p.m.

Location: Multi-Purpose Room A

Knit and Chat

Bring your yarn and needles to knit and chat with your friends about various topics. Show off your skills, and teach each other new methods!

Days/Time: Tuesdays & Fridays 9:00 a.m. - 10:00 a.m.

Location: Activity Room



Senior Mixer

If you like to salsa, cha-cha, rumba, waltz or boogie, this is the place to be. The senior mixer is a great opportunity to socialize with fellow seniors in the greater community of Glendale, make new acquaintances and enjoy a good time. Please call the Adult Recreation Center for a list of specific activities that take place during the mixer.

Days/Time: Thursdays 2:00 p.m. - 4:30 p.m.

Location: Dinning Hall

* A suggested donation of \$2.00 is collected at the entrance to the mixer. This is a gratuity that is given to the DJ at the end of each event.

Senior Services

Older, active adults are invited to enjoy meaningful personal and group activities offered at the City of Glendale community centers. Services and programs are available to assist in addressing basic needs, maximizing independence, and supporting the aging community. Information and referral is available for nutrition, housing, financial assistance, health, transportation, legal, and counseling services. Our programs are designed to provide growth, enhance personal dignity, and protect individual rights.

General Program Information:

(818) 548-3775

Nutritional Meals Program:

(818) 548-3778 or (818) 937-7405

Case Management Program Information:

(818) 548-3772



Home Delivered Meals

At-risk seniors 60 years of age and older who are homebound and unable to shop for or prepare meals may be eligible for seven frozen complete meals delivered weekly to their residence. A City of Glendale Case Manager meets with the client to provide this temporary service until a long-term solution can be implemented.

Donations are voluntary and confidential. A suggested donation is encouraged. For more information about home delivered meals and to inquire about eligibility, please contact (818) 937-7405.



Nutritional Meals Program

Come visit our Senior Café where you can have a delicious hot meal, socialize, and join in festive events. Adults 60 years and older are eligible for our Nutritional Meals Program funded in part through the Los Angeles County Area Agency on Aging.

Suggested Donation: \$2.50 per meal

Reservations for Meals Sites and Times:

Adult Recreation Center (ARC)

201 E. Colorado St.
Glendale, CA 91205

Meals are served:

7 days a week
at 11:30 a.m.

Sparr Heights Community Center

1613 Glencoe Way
Glendale, CA 91208

Meals are served:

Monday - Friday
at 11:30 a.m.

Pacific Community Center

501 South Pacific Ave.
Glendale, CA 91204

Meals are served:

Monday, Wednesday & Fridays
at 12:00 p.m.

For meal information and reservations, please call: (818) 548-3778.

Senior Services



CASE MANAGEMENT

The Case Management program for seniors is designed to meet the special needs of frail individuals who may be experiencing difficulty in maintaining independent living arrangements.

For Information & Referral Services, please call: (818) 548-3772
Spanish Language Case Manager: (818) 548-2801

Transportation Services and Bus Pass Sales:

Transportation services include Dial-A-Ride, by reservation, and MTA bus passes, sold at the Adult Recreation Center, Sparr Heights Community Center and Pacific Community Center all month long.

The Metro bus pass for seniors is not honored by the Beeline.

For more information about the Access Paratransit Program for disabled seniors, call (818) 548-3775 or (818) 548-2187.

Health Insurance Counseling and Advocacy Program (HICAP):

The state-registered Health Insurance Counseling and Advocacy Program (HICAP) Volunteer Counselors provide unbiased information, counseling and assistance on Medicare and related health care coverage, including:

- Original Medicare (Parts A & B)
- Medicare Prevention Services
- Medicare Part D (Prescription Drug Benefit)
- "Extra Help" with Medicare Part D
- Medicare Advantage: HMO'S & PPO
- Medicare Supplement (Medigap) Insurance
- Medi-Cal & Medicare Savings Programs
- Long-Term Care

Contact the Adult Recreation Center at (818) 548-3775 for more information.

Filming in Parks & Community Buildings

Contact Norma Mower: (818) 548-3813

Email: nmower@glendaleca.gov

Requesting a Film Permit

Contact Information:
Norma Mower
Community Services & Parks
Office: (818) 548-3220
Email: NMower@glendaleca.gov

1. Verify park/facility availability.
2. Obtain a Film Permit Application. Film permit application can be downloaded from www.glendaleca.gov/businesses/filming-in-glendale
3. Complete a Film Permit Application with Community Services & Parks.
4. Complete a Film Permit Application with the Management Services.
5. A site meeting may be scheduled in conjunction with the Facility Permit Application.
6. Make payment in full to Community Services & Parks.
7. Obtain an approved Facility Permit.



Filming in Glendale's Parks & Community Buildings

Film Permit Process



Filming in Glendale

Looking for a great place to host your next filming project? The City of Glendale Community Services & Parks Department welcomes filming in parks and community buildings! Our parks and locations can accommodate:

- ✓ Feature Films
- ✓ Commercials
- ✓ Music Videos
- ✓ Public Service Announcements
- ✓ Still Photo Shoots
- ✓ Reality TV Series
- ✓ Documentaries
- ✓ Director's Reels
- ✓ Student Films

Film Permits Include:

- Reserved site
- Professional Site Host onsite to ensure film crew has access to reserved site
- Well-maintained locations that are clean and ready for set dressing if applicable

Previous Film Projects Include:

- Criminal Minds TV Series
- Hyundai Commercial
- Ford Flex Commercial
- Cosmo Magazine Shoot
- Adidas Commercial
- The Bachelorette TV Series
- Nerf Commercial
- "Back in the Game" Sitcom Pilot
- Pedigree Commercial
- Battlefield America
- MTV's Parental Control
- Various other projects



Historic Buildings in Glendale Parks

Le Mesnager Barn

at Deukmejian Wilderness Park

3429 Markridge Rd., Glendale, CA 91214

Deukmejian Wilderness Park occupies a rugged 709 acre site in the foothills of the San Gabriel Mountains at the northernmost extremity of the City of Glendale. Trails on the site provide spectacular views of the Crescenta Valley and the Los Angeles basin. The site is relatively undeveloped except for an area of approximately 12 acres in the southern part of the property (the Park Center area) that houses the historic Le Mesnager Barn.

For information, call (818) 548-3795.



Rockhaven Sanitarium

2713 Honolulu Ave., Glendale, CA 91020

Rockhaven is a rare surviving example of the Sanitariums that once flourished in the Crescenta Valley. First opened in 1923 by Agnes Richard as a "home for the feeble-minded women," and later known as the "Screen Actor's Sanitarium," Rockhaven housed several Hollywood celebrities, such as Billie Burke, Flo Zigfield, Clark Gable's first wife, as well as Marilyn Monroe's mother. Over time, Agnes Richards purchased several neighboring Craftsman-style houses, and in the late 1920s and 1930s built several Spanish Colonial Revival style buildings which were designed specifically for the purpose of medical care and patient accommodations, expanding the facility to an approximately 3.5 acre site.

The character of this property was as much defined by its landscape as it was by its buildings. The buildings were, and still are, connected by meandering landscaped pathways, intimate gardens, patios, courtyards and expansive perimeter gardens to create a home-like setting for the individual care of the patients. In 1966, Rockhaven was awarded for its landscaping by Los Angeles Beautiful, Incorporated.

The City purchased the property in 2008 from Ararat Home, who had purchased the property in 2001 to operate a convalescent facility. The facility remains closed to the public at this time due to safety concerns.

You can read more about the facility by visiting the City's website, www.glendaleca.gov, and searching Rockhaven in the search bar.

Tours of Historic Facilities

Doctors House Museum & Gazebo

Inside Brand Park, 1601 West Mountain Street, Glendale, CA 91201
(818) 242-7447

HOURS OF OPERATION

Guided Tours: Sundays 2:00 p.m. - 4:00 p.m.
(Closed during the months of July and December, on holidays,
and during inclement weather)
Docent: The Glendale Historical Society
Suggested Donation: \$5



FACILITY DESCRIPTION

- The Doctors House Museum is an authentically restored Queen Anne-Eastlake style home built around 1888.
- The Doctors House lawn area and gazebo are available for reservation for weddings and other special events.
- Smoking, barbecues, and amplified sound are NOT permitted because of the historic nature of the facility.

HISTORY

- The two-story house originally stood at 921 East Wilson Avenue in Central Glendale, but was moved to its present location in 1980.
- Four early doctors owned it in succession, giving the house its name. It was later occupied by silent screen icon Nell Shipman and her family in the early 1900s.
- Threatened with demolition in 1979, community activists organized to save it and formally incorporated The Glendale Historical Society on October 24, 1979.
- The Glendale Historical Society dedicated the Doctors House to the City of Glendale on September 12, 1982, after spending thousands of volunteer hours on restoration.
- The Doctors House is registered as Glendale Register of Historic Resources #6.

"Shoseian" Whispering Pine Teahouse & Friendship Garden

Inside Brand Park, 1601 West Mountain Street, Glendale, CA 91201
(626) 390-0633

HOURS OF OPERATION

Friendship Garden: Monday - Thursday 10:00 a.m. - 3:00 p.m.
Teahouse Events/Programs: Third Sunday of the month. Visit www.glendaleteahouse.org for event details.
Docent: Friends of Shoseian

FACILITY DESCRIPTION

- The traditional teahouse was built in 1974 through the combined efforts of the Sister Cities of Glendale and Higashi-Osaka, Japan. It is one of the few traditional Japanese Teahouses open to the public in the United States.
- The Teahouse, which was designed by architect Hayahiko Takase, is a unique blending of western and eastern design and an apt expression of the spirit of cross-cultural community.
- Nestled at the foot of the Verdugo Mountains beside a koi pond in a charming Japanese-style garden setting, the Teahouse is in a unique position to outreach to the community of Glendale and greater Los Angeles.
- The Japanese Friendship Garden surrounding the Teahouse is available for weddings and other special events.

HISTORY

- The Teahouse represents the spirit of goodwill, lasting peace and friendship between the people of Japan and the United States.
- Given the name "Shoseian" or "Whispering Pine Teahouse" by Genshitsu Sen, the Fifteenth Grand Tea Master of the Urasenke School of Tea in Japan, the Teahouse is designated an official Tearoom. Dr. Yamazaki of Higashi-Osaka provided initial support for the Teahouse and Gardens.
- Through recent cooperative efforts by the City of Glendale and Friends of Shoseian, the Teahouse was refurbished and designated as Glendale Register of Historic Resources #46.

Tours of Historic Facilities

Casa Adobe de San Rafael & Park

1330 Dorothy Drive, Glendale, CA 91202

glendalebeautiful@gmail.com

www.glendalebeautiful.org

HOURS OF OPERATION

Daily 8:00 a.m. – Dusk

Guided Tours: September - June: First Sunday of the Month, 1:00 p.m. - 3:00 p.m.

July & August: Every Sunday, 1:00 p.m. - 3:00 p.m.

Suggested Donation: \$2

Docent: Glendale Beautiful



FACILITY DESCRIPTION

- The park is 1.6 acres in size.
- Amenities include a picnic pavilion which is available for small company or family picnics or gatherings, a turf area that is available for larger festival-type events, sink, electrical outlets, and public restroom facilities.
- Smoking, barbecues, and amplified sound are NOT permitted because of the historic nature of the facility

HISTORY

- Casa Adobe de San Rafael is registered as California Landmark #235 and Glendale Register of Historic Resources #3.
- The Casa was built around 1870 by Tomas Sanchez, former sheriff of Los Angeles County, using adobe blocks to form the walls, which were then covered with stucco.
- In 1875, the property was sold, left abandoned, and fell into a ruinous state.
- In 1930 the Casa was purchased by the California Medicinal Wine Company who planned to tear down the structure and remove the large eucalyptus trees on the property. Local neighbors and community members stopped the demolition and began a campaign to preserve the house as a historic landmark.
- The City of Glendale purchased the adobe in 1930 and by 1932 La Casa de Adobe de San Rafael was completely refurbished.
- Today, the adobe includes a Monterey-style corridor (covered porch), beautiful sunken garden, brick patio, sandy brown tile roof, and long narrow front windows adorned with teal shutters. Interior furnishings are from the nineteenth century.

Catalina Verdugo Adobe

2211 Bonita Drive Glendale, CA 91208; (747) 228-2688

HOURS OF OPERATION

Daily 8:00 a.m. - Dusk

Guided Tours: Scheduled Tours Only - Please call to schedule

Docent: Days of the Verdugos Heritage Association

FACILITY DESCRIPTION

- The park is 1.3 acres in size and is nestled at the base of the Verdugo Mountains in a residential neighborhood.
- Amenities include a walking trail, a garden, and a shaded picnic area with wooden tables, benches, and electric outlets.
- Smoking, barbecues, and amplified sound are NOT permitted because of the historic nature of the facility.

HISTORY

- The Catalina Verdugo Adobe is registered as California Historical Landmark #637 and Glendale Register of Historic Resources #1.
- The Adobe is the oldest structure in the City of Glendale. As with many early structures, the construction date of the Verdugo Adobe is uncertain. It is said the Adobe was built in 1828, but some research suggests that it dates to 1860. It was the home of Catalina Verdugo who, with her brother Julio, owned much of today's Northeast Glendale. Their father, Don Jose Maria Verdugo, was the original recipient of Rancho San Rafael, the Spanish land grant that encompassed large portions of Glendale, Burbank, and Eagle Rock.
- The grounds contain the remnants of the "Oak of Peace," under which a meeting was held in 1847 that led, a few days later, to the signing of the peace treaty, Treaty of Cahuenga, that ended the Mexican-American War.
- The Adobe originally consisted of the main room and the south wing. The north wing was added in the early 1900s, after it was sold to land developer F.P. Newport.
- In 1946, the property was sold to Dr. Ernest Bashor, and his family remained there until it was sold to the City of Glendale in 1989. It is fortunate that the historic value of the original house remained preserved.
- At present, the Museum focuses on the Verdugo family and their lifestyle in the 1800s.



Facility Reservations

COMMUNITY CENTERS



Adult Recreation Center

201 E. Colorado St.
Glendale, CA 91205
(818) 548-3775

Indoor Spaces:

- Dining Hall, maximum capacity: 240
- Multi-Purpose Room, maximum capacity: 80
- Activity Room, maximum capacity: 15
- Full service kitchen available. *Must be reserved in conjunction with a room reservation. You must bring your own kitchen equipment including pots, pans, utensils, storage ware, etc.*

Outdoor Spaces:

- Upper Courtyard, maximum capacity: 24
- Lower Courtyard, maximum capacity: 56

Maple Park Community Center

820 E. Maple St.
Glendale, CA 91205
(818) 548-3694

Indoor Spaces:

- Meeting Room 101, maximum capacity: 60
- Meeting Room 102, maximum capacity: 75
- Gymnasium, maximum capacity: 200
- *Two Kitchenettes equipped with warming oven, microwave, and sink. Must be reserved in conjunction with a room reservation. You must bring your own kitchen equipment including pots, pans, utensils, storage ware, etc.*

Outdoor Spaces:

- Terrace, maximum capacity: 20



Facility Reservations

COMMUNITY CENTERS



Pacific Community Center

501 S. Pacific Ave.
Glendale, CA 91204
(818) 548-4098

Indoor Spaces:

- Gym A, maximum capacity: 300
- Gym B with Stage, maximum capacity: 300
- Red Bud Room, maximum capacity: 40
- Sycamore Room, maximum capacity: 60
- Oak Room, maximum capacity: 32
- Conference Room, maximum capacity: 8
- A kitchenette equipped with an oven, 6 burner stove top, warming oven, microwave, and three basin sink. *Must be reserved in conjunction with a room reservation. You must bring your own kitchen equipment including pots, pans, utensils, storage ware, etc.*

Outdoor Spaces:

- Little League Baseball Field
- Multi-Use Artificial Turf Field with soccer lines
- Terrace, maximum capacity: 24
- Multi-Use Court with basketball and Pickleball lines
- Two picnic shelters, maximum capacity: 50 each (equipped with a barbecue and sink)

Sparr Heights Community Center

1613 Glencoe Way
Glendale, CA 91208
(818) 548-2188

Indoor Spaces:

- Verdugo Room maximum capacity: 100
- Garden Room maximum capacity: 40
- A Kitchenette equipped with warming oven, microwave, and two basin sink. *Must be reserved in conjunction with a room reservation. You must bring your own kitchen equipment including pots, pans, utensils, storage ware, etc.*

Outdoor Spaces:

- South Patio maximum capacity: 80
- North Patio maximum capacity: 8



Facility Reservations

PICNIC FACILITIES

(818) 548-2184 | (818) 548-2752

Verdugo Park

1621 Canada Blvd., Glendale, CA 91208

- Pavilions: 5
- Maximum Capacity: 100 per pavilion
- Amenities Include: BBQ grill, electrical outlets available in sections 2, 3, 4
- Jumper permitted

Catalina Verdugo Adobe

2211 Bonita Ave., Glendale, CA 91208

- Pavilions: 1
- Maximum Capacity: 50
- Amenities Include: Electrical outlets,
- No onsite cooking

Palmer Park

610 E. Palmer Ave., Glendale, CA 91205

- Pavilions: 2
- Maximum Capacity: 50 per pavilion
- Amenities Include: Electrical outlets, BBQ grill, sink
- Jumper permitted

Cerritos Park

3690 San Fernando Rd., Glendale, CA 91204

- Pavilions: 1
- Maximum Capacity: 30
- Propane gas BBQ only
- Jumper permitted

Deukmejian Wilderness Park

3429 Markridge Rd., Glendale, CA 91214

- Pavilions: 1
- Maximum Capacity: 50
- Amenities Include: Electrical outlets
- No onsite cooking

Lower Scholl Canyon Park

2847 E. Glenoaks Blvd., Glendale, CA 91206

- Pavilions: 3
- Maximum Capacity: 80 per pavillion
- Amenities Include: BBQ grill, sink, electrical outlets
- Jumper Permitted

Casa Adobe De San Rafael

1330 Dorothy Dr., Glendale, CA 91202

- Pavilions: 1
- Maximum Capacity: 100
- Amenities Include: Sink, electrical outlets
- Jumper permitted
- No onsite cooking

Central Park Paseo

220 S. Brand Blvd., Glendale, CA 91202

- Maximum Capacity: 75
- Amenities Include: Electrical outlets



Facility Reservations

COMMUNITY BUILDINGS

(818) 548-2184 | (818) 548-2752

Griffith Manor Community Room 1551 Flower St., Glendale, CA 91201

- Maximum Capacity: 50
- Amenities Include: Tables, chairs, warming oven, refrigerator, sink, microwave
- Jumper permitted

Dunsmore Community Building 4700 Dunsmore Ave., Glendale, CA 91214

Dunsmore Community Room

- Maximum Capacity: 50
- Amenities Include: Tables, chairs
- Jumper permitted

Dunsmore Community Room Kitchen

- Amenities Include: Sink, warming oven, refrigerator

Joe Bridges Clubhouse 2531 E. Glenoaks Blvd., Glendale, CA 91206

- Maximum Capacity: 100
- Amenities Include: Tables, chairs, warming oven, refrigerator, sink
- Jumper permitted

Brand Studios

1601 W. Mountain St., Glendale, CA 91201

- Maximum Capacity: 100
- Amenities Include: Tables, chairs, microwave, refrigerator, sink
- No onsite cooking



WEDDING SITES

(818) 548-2184 | (818) 548-2752

Brand Friendship Garden & Victorian Gazebo 1601 W. Mountain St., Glendale, CA 91201

- Maximum capacity: 200 people
- Amenities Include: 100 white plastic chairs

Deukmejian Wilderness Park Amphitheatre 3429 Markridge Rd., Glendale, CA 91214

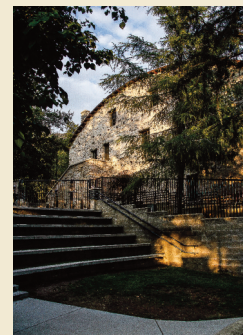
- Maximum Capacity: 100
- Amenities Include: Electrical outlets

Catalina Verdugo Adobe Park 211 Bonita Dr., Glendale, CA 91208

- Maximum Capacity: 50
- Amenities Include: Electrical outlets, resin picnic tables, fountain, and kitchenette with a counter and sink

Casa Adobe De San Rafael 1330 Dorothy Dr., Glendale, CA 91202

- Maximum Capacity: 100
- Amenities Include: Electrical outlets, 100 chairs for ceremony/reception



Facility Reservations



Civic Auditorium

1401 N. Verdugo Rd.
Glendale, CA 91208
(818) 548-2787
www.glendalecivic.com

- Upper Auditorium, maximum capacity: 1,100
- Lower Auditorium, maximum capacity: 600
- Commercial Kitchen on both levels
- Terrace Room, maximum capacity: 125 - Must be reserved in conjunction with the Upper Auditorium
- Conference Room, maximum capacity: 125 - Must be reserved in conjunction with the Lower Auditorium
- Parking Lot and/or Structure - Must be reserved in conjunction with either the Upper or Lower Auditorium

Sports Complex

2200 Fern Lane
Glendale, CA 91208
(818) 937-7440

Indoor Spaces:

- Meeting Room, maximum capacity: 50

Outdoor Spaces:

- Majors Artificial Turf Baseball Field with soccer lines for U12
- 2 Natural Grass Softball Fields
- 2 Artificial Turf Soccer Fields



Pacific Community Pool

509 S. Pacific Ave.
Glendale, CA 91204
(818) 937-7433

Outdoor Spaces:

- 25 yard / 6-lane pool
- Shallow end for recreation swim
- 2'-10' depth

Verdugo Skate Park

1621 Cañada Blvd.
Glendale, CA 91208
(818) 548-2786

Outdoor Spaces:

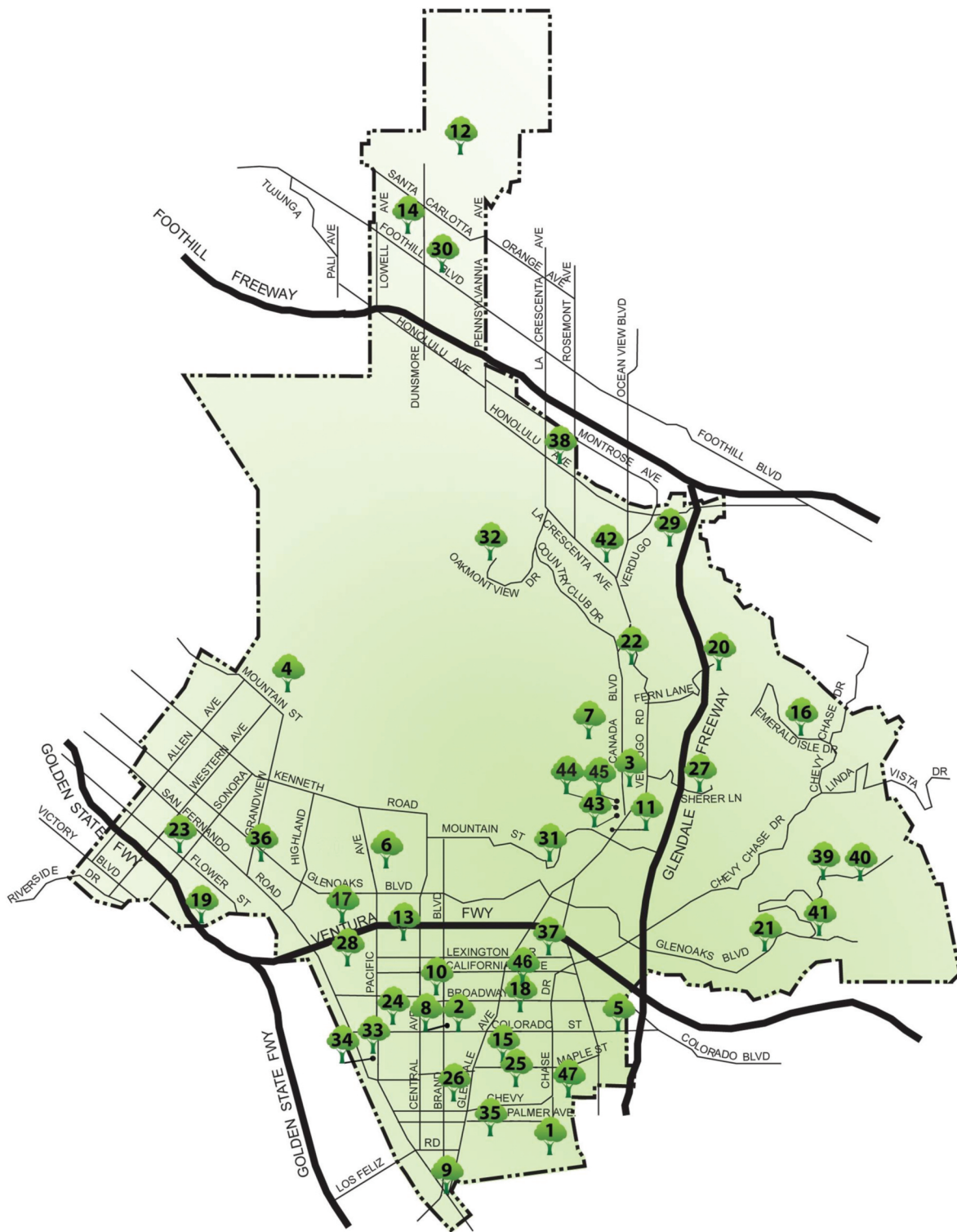
- 15,000 square foot concrete facility
- 6-9 foot Clover Bowl with an 11 foot Over-Vert section
- 6-10 foot Kidney Pool
- Street Plaza with rails and ledges
- Snake Run that empties into a 9 foot bowl with a loveseat



Facility Information

1	Adams Square Mini Park	1020 E. Palmer Ave. Glendale, CA 91205
2	Adult Recreation Center & Central Park	201 E. Colorado St. Glendale, CA 91205
3	Babe Herman Little League Field	1726 Canada Blvd. Glendale, CA 91208
4	Brand Park	1601 W. Mountain St. Glendale, CA 91201
5	Carr Park	1615 E. Colorado St. Glendale, CA 91205
6	Casa Adobe de San Rafael & Park	1330 Dorothy Dr. Glendale, CA 91202
7	Catalina Verdugo Adobe	2211 Bonita Dr. Glendale, CA 91208
8	Central Park Paseo	220 S. Brand Blvd, Glendale, CA 91202
9	Cerritos Park	3690 San Fernando Rd. Glendale, CA 91204
10	Chess Park	227 N. Brand Blvd. Glendale, CA 91202
11	Civic Auditorium	1401 N. Verdugo Rd. Glendale, CA 91208
12	Deukmejian Wilderness Park	3429 Markridge Rd. Glendale, CA 91214
13	Doran Gardens Mini Park	327 W. Doran St., Glendale, CA 91203
14	Dunsmore Park	4700 Dunsmore Ave. Glendale, CA 91214
15	Elk Mini Park	800 E. Elk Ave. Glendale, CA 91205
16	Emerald Isle Park	2130 Lenore Dr. Glendale, CA 91206
17	Fremont Park	600 W. Hahn Ave. Glendale, CA 91203
18	Glendale Heritage Garden	141 S. Cedar St. Glendale, CA 91205
19	Glendale Narrows Riverwalk	300 Paula Avenue, Glendale, CA 91201- West Entrance
20	Glendale Sports Complex	2200 Fern Lane Glendale, CA 91208
21	Glenoaks Park	2531 E. Glenoaks Blvd. Glendale, CA 91206
22	Glorietta Park	2801 N. Verdugo Rd. Glendale, CA 91208
23	Griffith Manor Park	1551 Flower St. Glendale, CA 91201
24	Harvard Mini Park	425 W. Harvard Glendale, CA 91204
25	Maple Park and Community Center	820 E. Maple St. Glendale, CA 91205
26	Maryland Avenue Park	812 S. Maryland Avenue, Glendale, CA 91205
27	Mayors Bicentennial Park	1787 Loma Vista Dr. Glendale, CA 91208
28	Milford Mini Park	601 W. Milford Ave. Glendale, CA 91203
29	Montrose Park	3529 Clifton Place, Glendale, CA 91208
30	New York Park	4525 New York Ave. Glendale, CA 91214
31	Nibley Park	1103 E. Mountain St. Glendale, CA 91207
32	Oakmont View Park	2940 Oakmont View Dr. Glendale, CA 91208
33	Pacific Park & Community Center	501 S. Pacific Ave. Glendale, CA 91204
34	Pacific Community Pool	509 S. Pacific Ave. Glendale, CA 91204
35	Palmer Park	610 E. Palmer Ave. Glendale, CA 91205
36	Pelanconi Park	1000 Grandview Ave. Glendale, CA 91201
37	Piedmont Park	1145 E. Lexington Dr. Glendale, CA 91206
38	Rockhaven - CLOSED FOR PUBLIC USE	2713 Honolulu Ave., Glendale, CA 91020
39	Scholl Canyon Athletic Fields	3200 E. Glenoaks Blvd. Glendale, CA 91206
40	Scholl Canyon Golf Course & Tennis Center	3800 E. Glenoaks Blvd. Glendale, CA 91206
41	Scholl Canyon Park & Picnic Area	2849 E. Glenoaks Blvd. Glendale, CA 91206
42	Sparr Heights Community Center	1613 Glencoe Way Glendale, CA 91208
43	Stengel Field	1601 Canada Blvd. Glendale, CA 91208
44	Verdugo Park	1621 Canada Blvd. Glendale, CA 91208
45	Verdugo Skate Park	1621 Canada Blvd. Glendale, CA 91208
46	Wilson Mini Park	1101 E. Wilson Glendale, CA 91206
47	Windsor Mini Park	1300 E. Windsor Glendale, CA 91205

Map of Glendale Parks



PARKS, COMMUNITY CENTERS, HISTORIC SITES, AND SPECIAL USE FACILITIES

Winter 2019-2020 Leisure Guide

Phone Directory

Administration Office: (818) 548-2000 | Fax: (818) 548-3789

RECREATION PROGRAMS

Aquatics Programs	(818) 937-7433
Customer Service Office	(818) 548-2184, (818) 548-2752
Contract Classes Registration	(818) 548-2184, (818) 548-2752
Trails & Open Space Program	(818) 548-3795
Party On the Go!/Climbing Wall/Flicks on the Go!.....	(818) 548-2188
Senior Programs & Services	(818) 548-3775
Sports Programs for Adults and Youth	(818) 937-7440
Therapeutic Recreation Programs	(818) 548-3783
Verdugo Skate Park	(818) 548-2786
Volunteer Program	(818) 548-2792
Youth & Family Services Program	(818) 937-7246

FACILITY RESERVATION AND INFORMATION

Adult Recreation Center	(818) 548-3775
Brand Studios	(818) 548-2184, (818) 548-2752
Civic Auditorium	(818) 548-2787
Film Permits	(818) 548-3813
Glendale Sports Complex & Sports Fields	(818) 937-7440
Maple Park Community Center	(818) 548-3783
Pacific Community Center	(818) 548-4098
Pacific Community Pool	(818) 937-7433
Park & Picnic Reservations	(818) 548-2184, (818) 548-2752
Photography Permits	(818) 548-2184, (818) 548-2752
Sparr Heights Community Center	(818) 548-2187
Wedding Reservations	(818) 548-2184, (818) 548-2752

Happy Holidays

from Community Services & Parks!



