

# CITY OF GLENDALE, CA

*January 27, 2015 Community Meeting*



**CHEVY CHASE SEWER DIVERSION  
AND  
PUBLIC WORKSYARD RECYCLED WATER MAIN EXTENSION PROJECT**

# CHEVY CHASE SEWER DIVERSION AND

# PUBLIC WORKS YARD RECYCLED WATER MAIN EXTENSION PROJECT



Reasons for Project

Methods of the Sewer Main Pipe Installation

PWYards Recycled Water Main Extension Project

Project Impact and Mitigating Measures

Construction Phasing/Scheduling

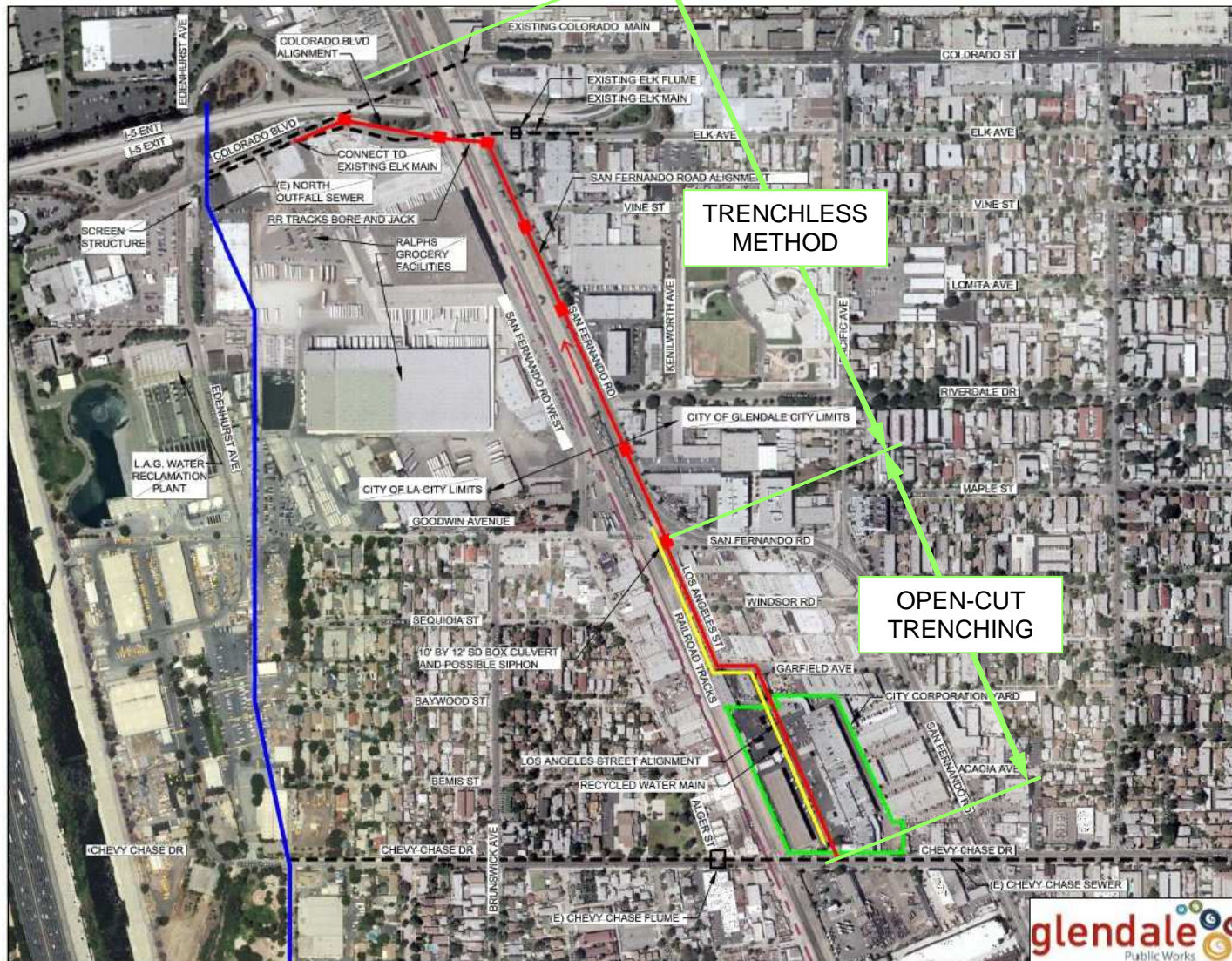
Public Notification

Project Updates & Contact

Project Related Questions



# LOCATION MAP



## LEGEND

- EXISTING SEWERS
- CITY CORPORATION YARD
- PROPOSED HORIZONTAL ALIGNMENT
- EXISTING CITY OF LOS ANGELES NORTH OUTFALL SEWER
- CITY OF GLENDALE AND CITY OF LA CITY LIMIT BOUNDARY
- SEWER FLOW DIRECTION
- PROPOSED RECYCLED WATER MAIN
- BORE/RECEIVING SHAFT

CHEVY CHASE SEWER DIVERSION  
AND  
PUBLIC WORKS YARD RECYCLED  
WATER MAIN EXTENSION PROJECT  
AERIAL PROJECT LOCATION MAP



PLAN  
NOT TO SCALE

# ANTICIPATED CONSTRUCTION SCHEDULE

Start: Summer 2015

End: Spring 2017

PROJECT DURATION:

400 Working Days

(564 Calendar Days)

barring any unforeseen conditions

# REASONS FOR PROJECT

## 2007 Glendale Wastewater Master Report Findings

- Need to increase pipe size of the Sewer Collector in San Fernando Road
- Age of Existing Sewer Pipe on Chevy Chase Dr
- Sewer Collection Redundancy
- Precautionary Measures
- Divert Chevy Chase Flume Flow to LAGWRP via new pipe
- Improve LAGWRP performance by providing additional domestic strength wastewater at plant's low flow conditions

# METHODS OF SEWER MAIN PIPE INSTALLATION

# TRENCHLESS METHOD OPEN SHIELD PIPE JACKING



- **Sewer Route: Colorado Blvd-RR Tracks-San Fernando Rd**
- **Install Boring/Receiving Shafts by Open Cut**
- **Shaft Distance/Depth: approx. 500 LF, 27 to 42 feet deep**
- **Jack total of 2,850 linear feet of 48-Inch and 68-Inch Steel Casing**
- **Install 36-Inch and 48-Inch HDPE sewer carrier pipe inside steel casing**
- **Possible Dewatering Wells**



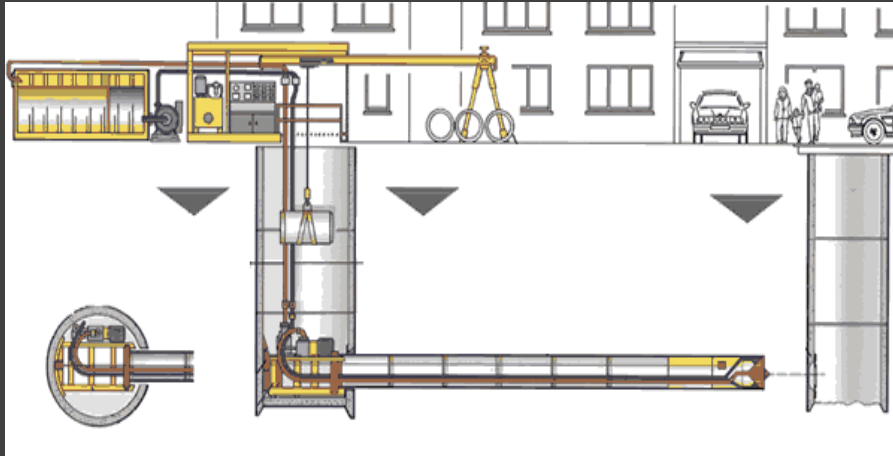
# TRENCHLESS METHOD BENEFITS



- **Minimize Disruption**
- **Smaller and Localized Workspace Footprint**
- **Less Traffic Interruption, Lane Closure**
- **Minimize Utility Conflict and Avoid Relocation**



# TYPICAL TRENCHLESS WORKSPACE LAYOUT



# OPEN - CUT TRENCHING METHOD



- **Route: Colorado Blvd in LA for 54-inch;**
- **Los Angeles St-Garfield Ave-PW Yard-Chevy Chase Dr in Glendale for 36-inch;**
- **Work: Install 36-inch VCP and 54-inch HDPE Sewer Pipe**
- **Trench Length/Depth: 1,500 LF, 15 to 27 feet**
- **Work Space-Occupy 1-2 traffic lanes**
- **Possible Dewatering**





# **PUBLIC WORKS YARD RECYCLED WATER MAIN EXTENSION PROJECT**

# PUBLIC WORKS YARD RECYCLED WATER MAIN EXTENSION PROJECT

- A. Route: Los Angeles St-Garfield St-PW Yard
- B. Work: Install 1,500 LF of 8-inch PVC recycled water main
- C. Reason: For PW Yard Vehicle Washing
- D. Method: Open-Cut Trenching, approx. 2 feet wide, 5 feet deep



**PROJECT IMPACT  
TO BUSINESSES AND RESIDENTS  
AND  
MITIGATING MEASURES**



# PROJECT IMPACT



- Lane Closure for Workspace
- Traffic Delay
- Traffic Reroute
- Limited Parking
- Limited Access
- Driveway Closures
- Noise and Dust

# MITIGATING MEASURES

- Public Notifications including Social Media
- Construction Phasing
- Allow Parking in Restricted Time/Areas
- Night Work
- 24-hour Work
- Restricted Working Hours
- Install Steel Plate for Access
- Businesses Open During Construction Signs

**CONSTRUCTION WORK WILL BE COORDINATED TO MINIMIZE  
IMPACT TO LOCAL BUSINESSES & TRAFFIC**

# CONSTRUCTION PHASING

# ANTICIPATED CONSTRUCTION PHASING

## Trenchless Section

- Set up Traffic Control
- Mobilize Equipment and Machines
- Excavate Shafts (open cut)
- Jack and Bore Steel Casing through ground
- Install Manholes and Metering Structure

## Open-Cut Trenching Section

- Set up Traffic Control
- Mobilize Equipment
- Set-up Sewer Bypass
- Trench, Install Pipe (50-70 LF/day), backfill trench, pave trench

# Public Notification Process

Community  
Meeting

Director of  
Public Works  
Letter

Contractor's  
Notification  
Letter  
(1-2 weeks  
prior)

Project Signs

Business  
Open During  
Construction  
Signs

Changeable  
Message  
Signs

3 Day Door  
Hanger  
and  
No Parking  
Signs

Driveway  
Closures

Website  
Updates



# CHEVY CHASE SEWER DIVERSION AND

# PUBLIC WORKS YARD RECYCLED WATER MAIN EXTENSION PROJECT



## :::THANK YOU:::

For questions or general information, please contact:

**Jasmina Zigic, P.E.**

Project Manager

(818) 548-3945

**Yvonne Guerra**

Community Outreach

(818) 548-3945

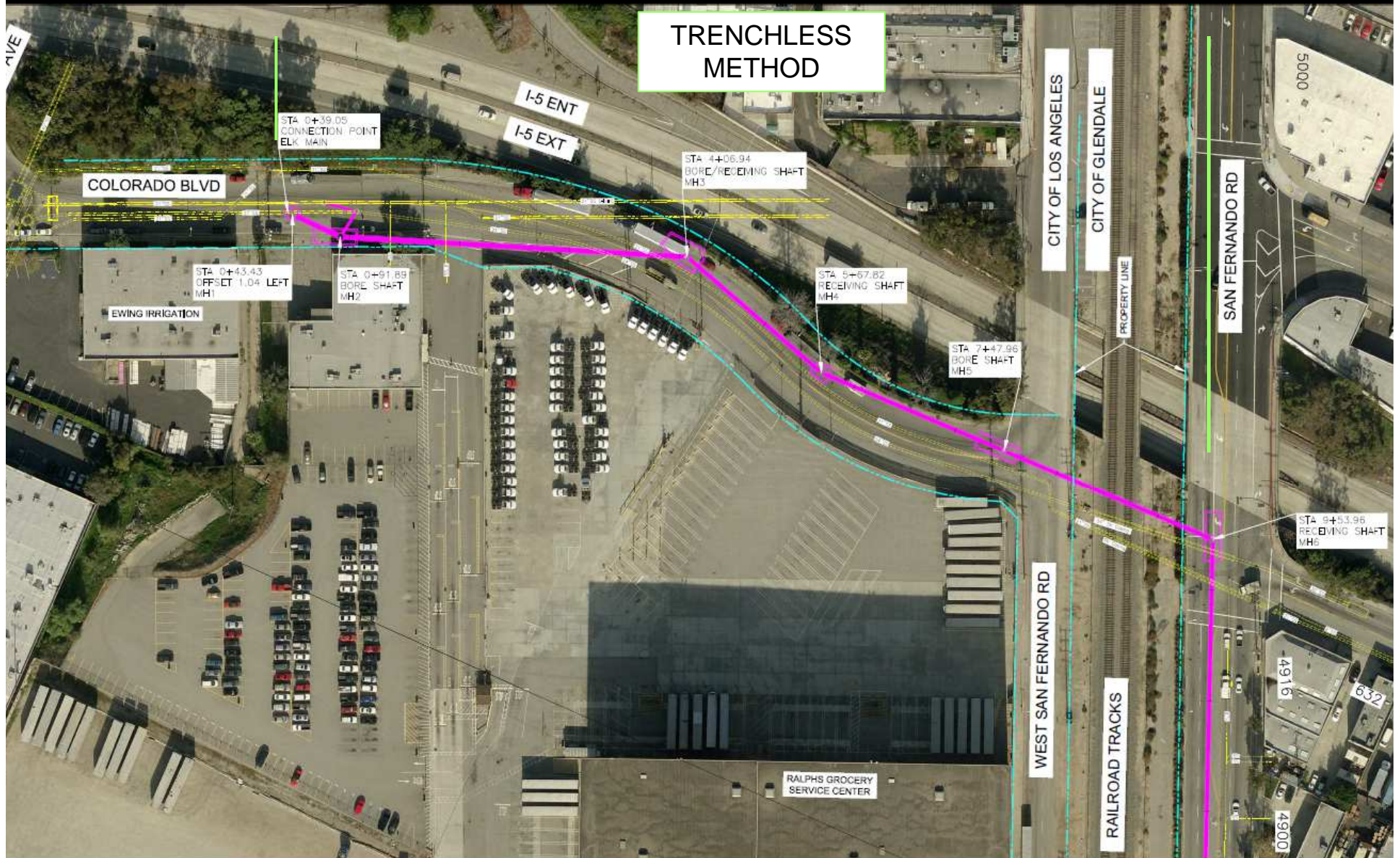
**Public Works' Website:** <http://www.glendaleca.gov>



*@MyGlendale*

*#MyGlendale*

# TRENCHLESS METHOD

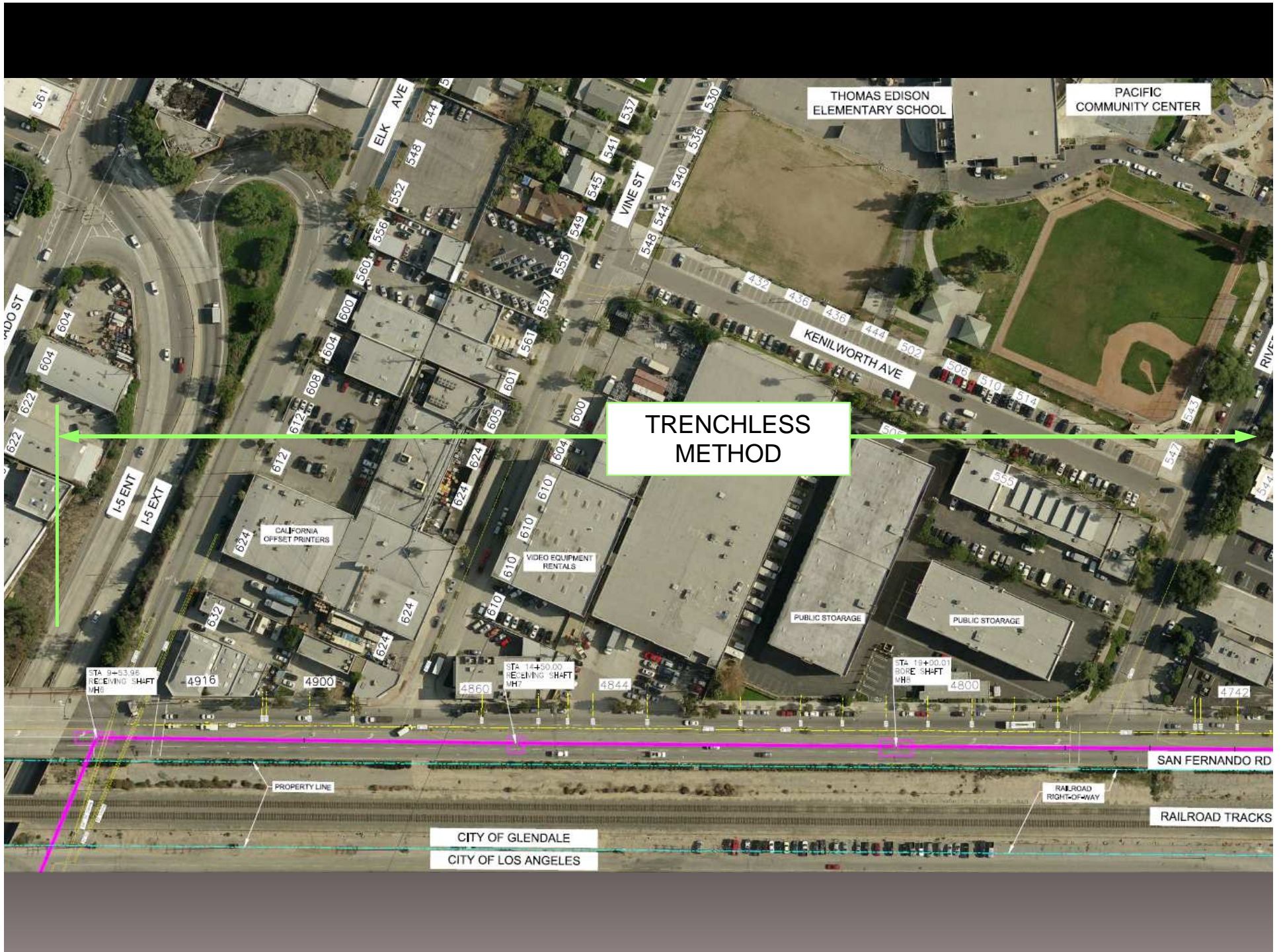


CHEVY CHASE SEWER DIVERSION - SPEC 3446  
AERIAL PROJECT LOCATION MAP



PUBLIC WORKS DEPARTMENT  
ENGINEERING DIVISION  
CITY OF GLENDALE  
CALIFORNIA













OPEN-CUT  
TRENCHING METHOD

CITY OF GLENDALE  
PUBLIC WORKS YARD

GLENDALE  
AUTO BODY

EARL SCHEIB  
AUTO PAINT & BODY

SUNSET TOW

CITY OF GLENDALE  
RECYCLING CENTER

CITY OF GLENDALE  
INTEGRATED WASTE MANAGEMENT

STA 37+02.19  
MH17

STA 37+33.57  
MH18

STA 40+55.52  
MH19

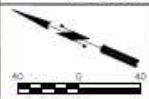
STA 43+77.46  
MH20

RAILROAD  
RIGHT-OF-WAY

PROPERTY LINE

RAILROAD TRACKS

CHEVY CHASE SEWER DIVERSION - SPEC 3445  
AERIAL PROJECT LOCATION MAP



PUBLIC WORKS DEPARTMENT  
ENGINEERING DIVISION  
CITY OF GLENDALE  
CALIFORNIA  
**glendale**  
CALIFORNIA