

#### MAXIMIZE FUN

DVD creates an experience full of interest and delight that complements nature and inspires fun and relaxation.

#### WHAT TO SEE

Stories, themes, history, culture and art are beautifully brought to life by DVD's creative and innovative designers.

#### GETTING TOGETHER

Discover a place for diverse recreational activities that everyone can share and enjoy. DVD believes community input is important; we enjoy working with the community to bring vision to reality.

#### MAKING MEMORIES

The DVD team brings to each design a creativity and uniqueness that transforms our parks from the typical to a memorable experience.

#### SURPRISE

Attention to detail shows in every aspect of our design. We embellish our parks with beautiful and creative elements. Come see what's around the next corner!

## DESIGNING LANDSCAPES THAT CREATE COMMUNITY...

A sample of other recent park projects designed by the DVD Team - for more information see our web site at [www.DVVolzDesign.com](http://www.DVVolzDesign.com)



**CORPORATE OFFICE**  
151 KALMUS DRIVE, SUITE M8  
COSTA MESA, CA 92626  
714.641.1300 | 714.641.1323 FAX

**COACHELLA OFFICE**  
78060 CALLE ESTADO  
LA QUINTA, CA 92252  
760.580.5165 | 760.564.0269 FAX

**SAN JOSE OFFICE**  
111 NORTH MARKET STREET, SUITE 200  
SAN JOSE, CA 95112  
669.444.0641

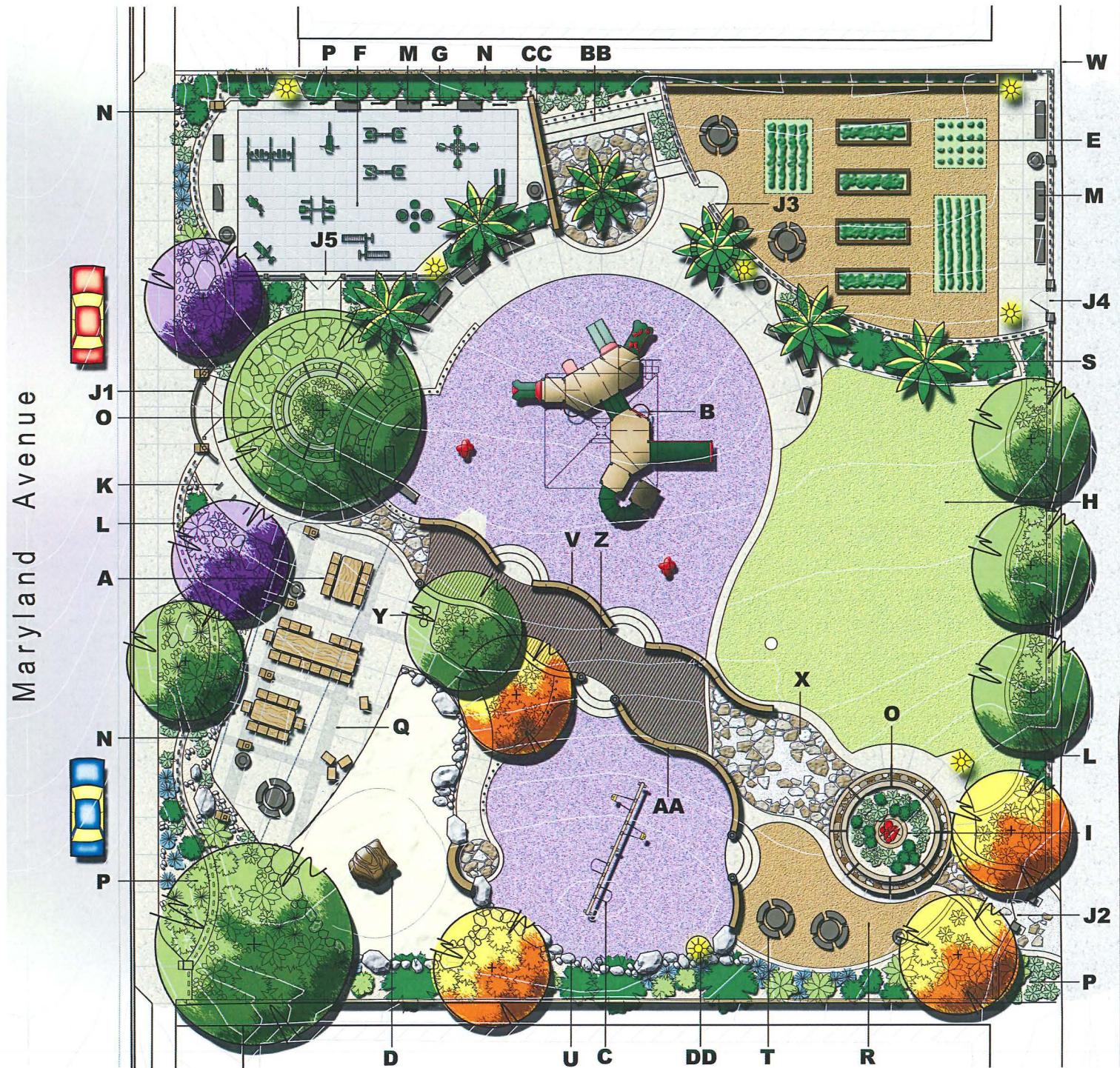


## CITY OF GLENDALE MARYLAND PARK

Maryland Avenue Park features natural turf grass and water-wise planting, children play spaces, outdoor fitness stations, a small overhead shade structure and 4,900 square feet of impervious pavement. A one of a kind entry gate and a 60 square foot artistic tiled mural welcomes and introduces visitors to the area's rich history. This historic community, known as the "Tropico District", provided a nearby retreat from the bustling Los Angeles life in the 1920's. Intergrated history panels and colorful tiles decorate columns and other features illuminate the Tropico's fabled past. The Maryland Avenue Park has provided the canvas to share Tropico's contribution to photography, pottery and agriculture through interpretative signs and murals.







## Legend

- A — PICNIC AREA UNDER SHADE STRUCTURE
- B — CHILDREN PLAY STRUCTURE OVER RUBBERIZED PLAY SURFACE
- C — SWINGS (2 STANDARD SEATS & 2 TOT SEATS) OVER RUBBERIZED PLAY SURFACE
- D — CLIMBING BOULDERS AND ROPES PLAY AREA IN SAND SURFACING
- E — GARDEN PLOTS FOR COMMUNITY AND SCHOOL CHILDREN'S GARDEN PLOTS
- F — OUTDOOR FITNESS STATIONS WITH RUBBER TILE SURFACING
- G — "HEALTH AND WELLNESS" INFORMATION PANELS
- H — OPEN LAWN SPACE FOR COMMUNITY ACTIVITIES
- I — OPPORTUNITY TO DISPLAY A PUBLIC ART PIECE
- J1 — GATE - MAIN PARK ENTRANCE WITH "MARYLAND PARK" SIGN & DECORATIVE COLUMNS
- J2 — GATE TO ACCESS PARK FROM ALLEY
- J3 — GATE - PRIMARY GARDEN ACCESS
- J4 — GATE - SECONDARY GARDEN ACCESS GATE
- J5 — GATE - FITNESS AREA
- K — BICYCLE RACK
- L — DECORATIVE WALL/FENCE ALONG STREET FRONTAGE
- M — PARK BENCH
- N — DROUGHT TOLERANT PLANTINGS
- O — RAISED PLANTER RING WITH BUILT-IN SEATING
- P — LANDSCAPE PLANTINGS TO SOFTEN PERIMETER VIEWS
- Q — DECORATIVE PAVING - COLOR CONCRETE
- R — PERMEABLE PAVING
- S — PALM TREE
- T — CAFE STYLE TABLES WITH CHESS BOARD PATTERN TABLE TOP
- U — ROCK EDGING
- V — DECORATIVE WALL WITH HISTORIC "TROPICO" IMAGES & INFORMATION WALL
- W — EXISTING UTILITY POLE
- X — DECORATIVE PAVING - STONE
- Y — DRINKING FOUNTAIN
- Z — DECKING OVER ON-SITE WATER DETENTION BASIN
- AA — PRECAST SEATWALL
- BB — BLEACHER STEPS FOR SEATING & GROUP GATHERINGS
- CC — WALL - OPPORTUNITY TO INCORPORATE TILE MURAL WITH "TROPICO" THEME
- DD — PARK LIGHTING

## THE PROJECT

This special park is one of the hundred or so parks funded through the state competitive grant program Proposition 84, which selects projects in park poor, economically challenged neighborhoods. Maryland Avenue Park is located in the historic Tropico District, an area with a critical lack of park space and high poverty. Extensive community outreach during the design process resulted in a unique community-focused park bringing the neighborhood together to enjoy a beautiful natural setting within this urban community.

The city acquired this small infill lot when a developer abandoned plans for new housing units, creating an opportunity to build a park in the midst of mid-rise apartments. The design team conducted extensive community outreach to develop a park program including opportunities for public art, historical and educational interpretive pieces, and a partnership with the local grade school use of the new community garden. The community also envisioned a play lot, seating areas and picnic tables, some grass and a gate to discourage gang activities in the nighttime hours. The new park delivered all that was promised! Murals depicting historic Tropico fruit box labels, plaques with history lessons, and beautiful artistic metal gates adorn the new park. Built-in benches along a central boardwalk, an exercise area with workout stations, a picnic pavilion, and a raised bed community garden offer a great breadth of uses for this high-density, multi-ethnic neighborhood tract.

Neighbors of the community are meeting each other for the first time in this wonderful park, strengthening the community image and defining a new Tropico District in the City of Glendale. This much needed green space has transformed the community in its first few months of opening; neighbors are noticeably friendly, cheerful, and thankful for this pleasant area. The gates and lighting enhance park safety. Environmental conservation practices are demonstrated in this half-acre space. The formerly flat site has been graded to enhance visual interest and guide water run-off to the new storm water collection basin below the central boardwalk. Drought-tolerant plantings and sophisticated irrigation systems keep the park's water use low. This park has elevated the level of interaction of neighbors with each other as well as increased environmental value and awareness in the urban setting.

