



WELCOME

To The

COMMUNITY MEETING

For The

FISCAL YEAR 2014-15 SLURRY SEAL PROGRAM

Fiscal Year 2014-15 Slurry Seal Program



CITY OF GLENDALE, CA

Community Meeting , December 8th, 2014



Fiscal Year 2014-15 Slurry Seal Program

ANTICIPATED

CONSTRUCTION START DATE:

*April to August
2015*

PROJECT DURATION:

*113 Calendar Days
barring any unforeseen conditions*

MEETING AGENDA

Technical Terms/Resourceful Facts

Project Location/Limits

Concrete/Pavement R&R

Crack Seal/Slurry Seal/ARAM

Construction Phasing/Scheduling

Public Notification Process

Questions / Comments



Resourceful Facts

ARAM

-Asphalt Rubber Aggregate Membrane (Cape Seal)

CRACK SEAL

R&R - Remove and Replace

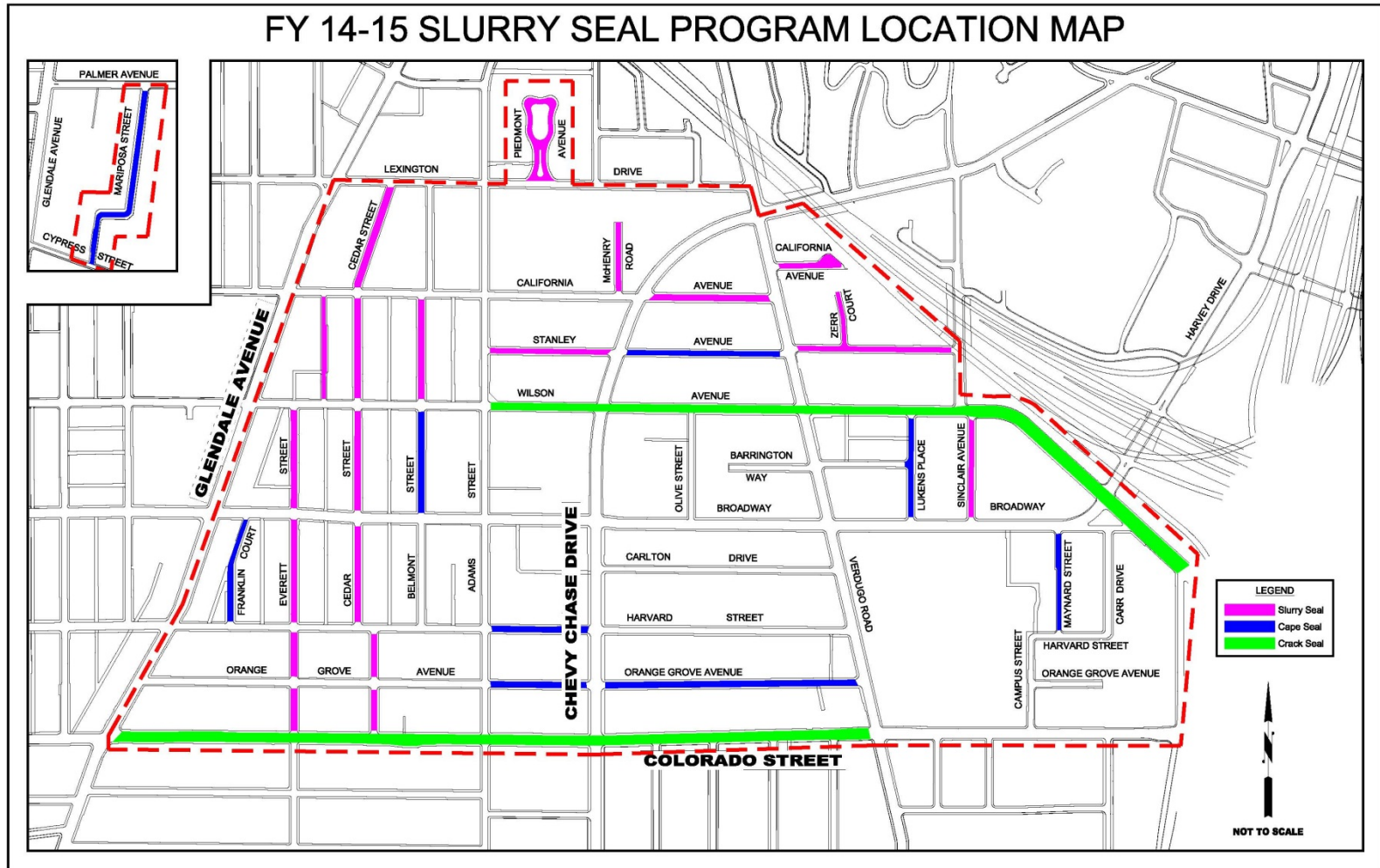


More Resourceful Facts

SLURRY SEAL - A slurry seal is a homogenous mixture of emulsified asphalt, water, well-graded fine aggregate and mineral filler that has a creamy fluid-like appearance when applied.

PROJECT LOCATION MAP

FY 14-15 SLURRY SEAL PROGRAM LOCATION MAP



Fiscal Year 2014-15 Slurry Seal Program

Street Trees

Selected street trees causing significant damage will be removed and new trees will be planted in place by Public Works Maintenance Services before start of the construction.

Residents adjacent to those trees will be informed in advance.



Fiscal Year 2014-15 Slurry Seal Program

CONCRETE

**Remove and Replace
Uplifted/Broken/Damaged:**

- *Sidewalks*
- *Curb Ramps*
- *Driveway Aprons*
- *Curb/Gutter*
- *Cross Gutters*



Fiscal Year 2014-15 Slurry Seal Program

ASPHALT CONCRETE PAVEMENT

Remove and Replace Deteriorated Localized Street Pavement

Process Used:

- *Full Removal of Existing Asphalt Pavement*
- *Removal of Tree Roots That Caused Uplift*
- *Placement of New Asphalt Pavement*

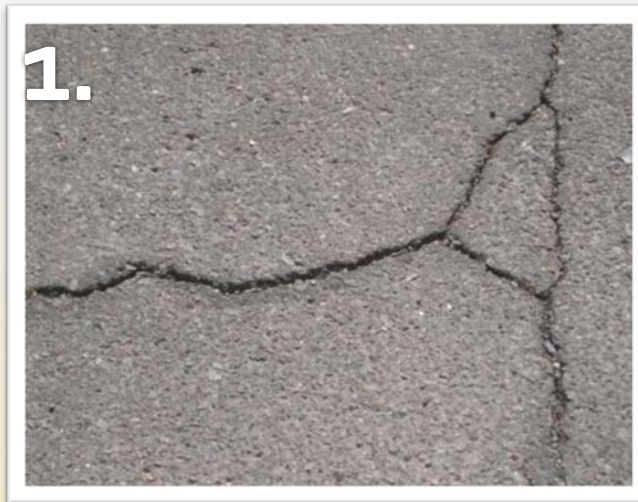


Fiscal Year 2014-15 Slurry Seal Program

CRACK SEAL

Method used to repair, seal, and fill cracks in pavement surface

- *Clean crack with pressurized air*
- *Seal cracks up to 2" wide with hot mix asphalt*



Fiscal Year 2014-15 Slurry Seal Program

SLURRY SEAL

Method used to preserve, protect, and extend the life of pavement

- *Crack sealing first*
- *3/8" thick-seals and corrects pavement*
- *Improves skid resistance*
- *Economical*
- *1 Day Process, Road Closed for a Day (Drivable by 5 PM)*
- *Irrigation should be turned off*
- *Parking and access to your street will be unavailable during the day of Slurry Sealing*
- *Parking will be available on nearby streets*
- *Street will be fully opened in the evening barring any unforeseen conditions*



Fiscal Year 2014-15 Slurry Seal Program

Cape Seal (ARAM)

Method used to extend life of severely distressed pavement that requires reconstruction and has low average daily traffic

- *Asphalt rubber with 3/8" aggregate*
- *Seals and corrects pavement*
- *Improves skid resistance*
- *2 One-Day Processes (Approximately 1 week apart)*
- *Irrigation should be turned off*
- *Parking and access to your street will be unavailable during the day of ARAM application*
- *Parking will be available on nearby streets*
- *Street will be fully opened in the evening barring any unforeseen conditions*



Fiscal Year 2014-15 Slurry Seal Program

ANTICIPATED CONSTRUCTION PHASING

PHASE 1:

*APPLICATION OF CRACK SEAL
CONCRETE REMOVAL AND REPLACEMENTS*

PHASE 2:

AC PAVEMENT REMOVAL AND REPLACEMENTS

PHASE 3:

APPLICATION OF CAPE SEAL AND SLURRY SEAL

PHASE 4:

INSTALLATION OF STRIPING, SIGNING, & PAVEMENT MARKINGS

Public Notification

Community
Meeting
(Today)

City Website
(Bid
Advertisement)

Director's
Letter
(1-2 months
ahead)

Contractor's
Notification
Letter
(2~3 weeks
ahead)

3-Day Door
Hanger
(Concrete/AC
R&R)
(3 days)

3-Day Door
Hanger
(Slurry Seal/
ARAM)
(3 days)



QUESTIONS / COMMENTS



:::THANK YOU:::

For questions or general information, please refer to the project Website :

<http://www.glendaleca.gov/government/departments/public-works/projects/fy-2014-2015-slurry-seal-and-pavement-repair>

For project updates follow us on Twitter @cogpublicworks

Contact us:

Arthur Asaturyan, Project Manager, (818) 548-3945

or email: AAsaturyan@GlendaleCA.GOV

