



GLENDALE NARROWS RIVERWALK PROJECT "JEWEL AT THE BEND"



Community Workshop #2 | October 29, 2014

WHO WE ARE

CITY OF GLENDALE

Public Works

Roubik Golanian

Peter Vierheilig

Kevin Carter

Community Services & Parks

Jess Duran

Marc Stirdivant

DESIGN TEAM

Atkins – PM/Engineering

John Merkler AIA

TY Lin – Bridge Design

Joe Tognoli/Michael Fitzpatrick/Hunter

Ruthrauff

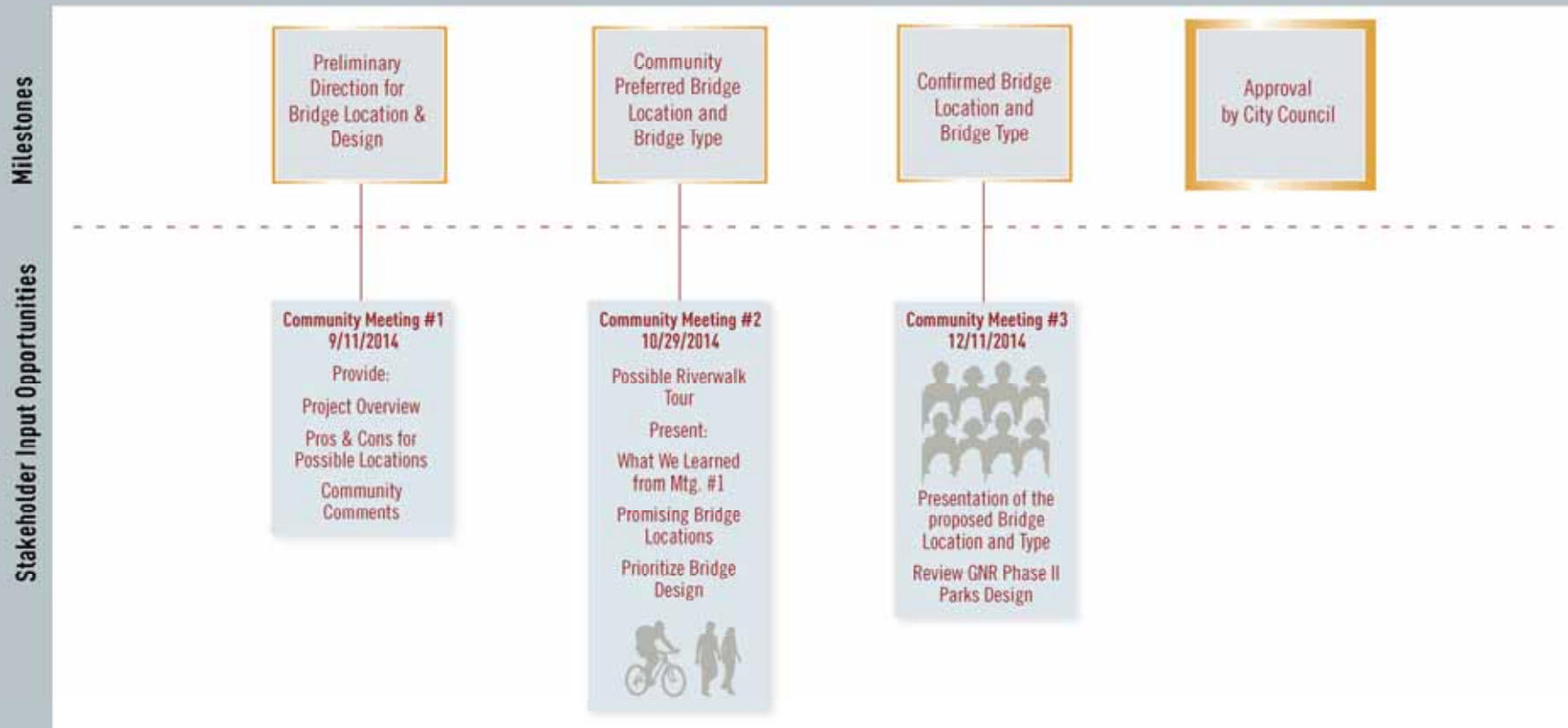
Katherine Padilla Associates – Outreach

Katherine Padilla

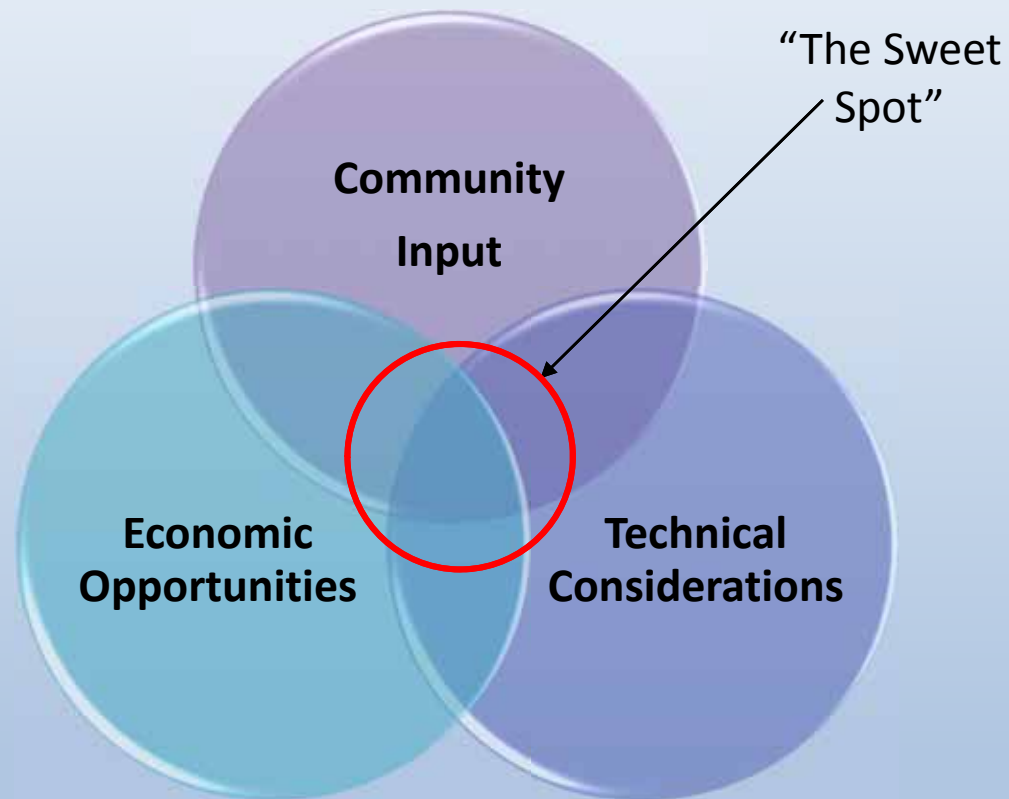
WHAT WE AIM TO ACCOMPLISH

Glendale Riverwalk Phases II and III A Joint Community/City Partnership

The Public Participation Process:

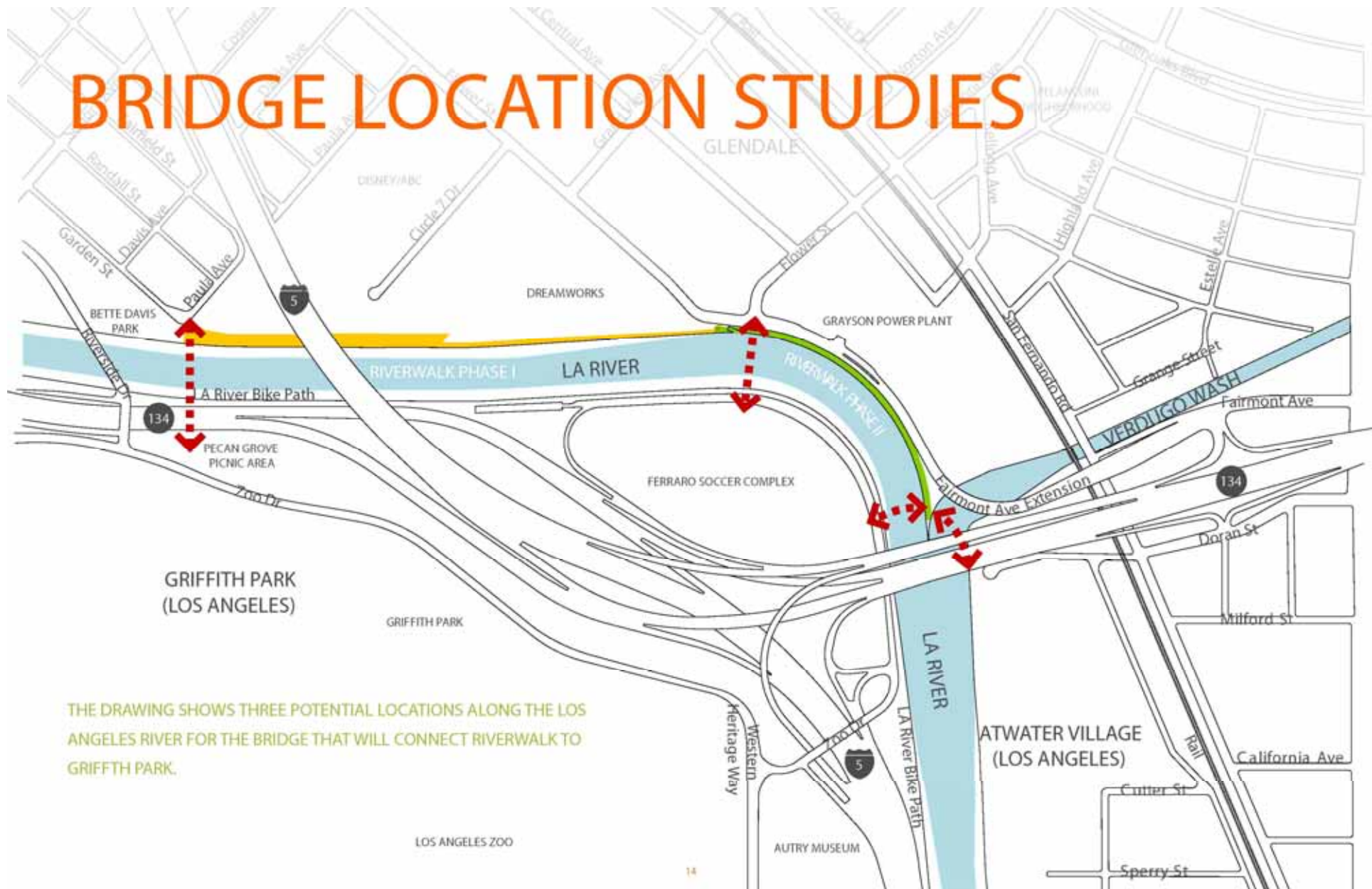


KEY FACTORS INFLUENCING PROJECT DECISIONS



- Review Workshop #1
 - 2010 Master Plan review
 - Differentiators of bridge locations
 - What we learned
- Bridge type opportunities presentation
 - Bridge location creates options for bridge design
 - Voting and Q/A
 - Bridge directions
- Bridge development for Workshop #3

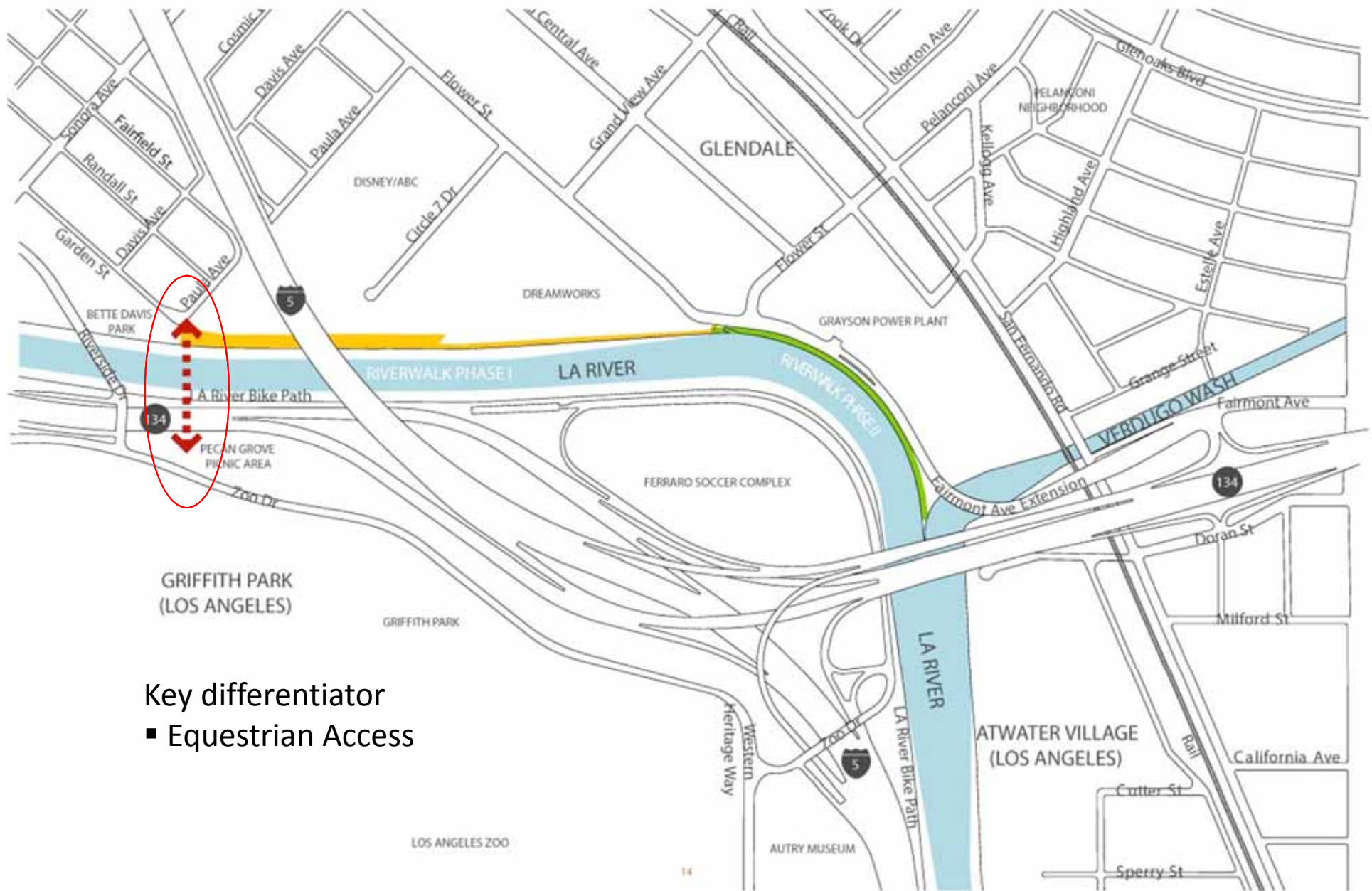
WORKSHOP #1 BRIDGE LOCATION REVIEW



Bridge Design

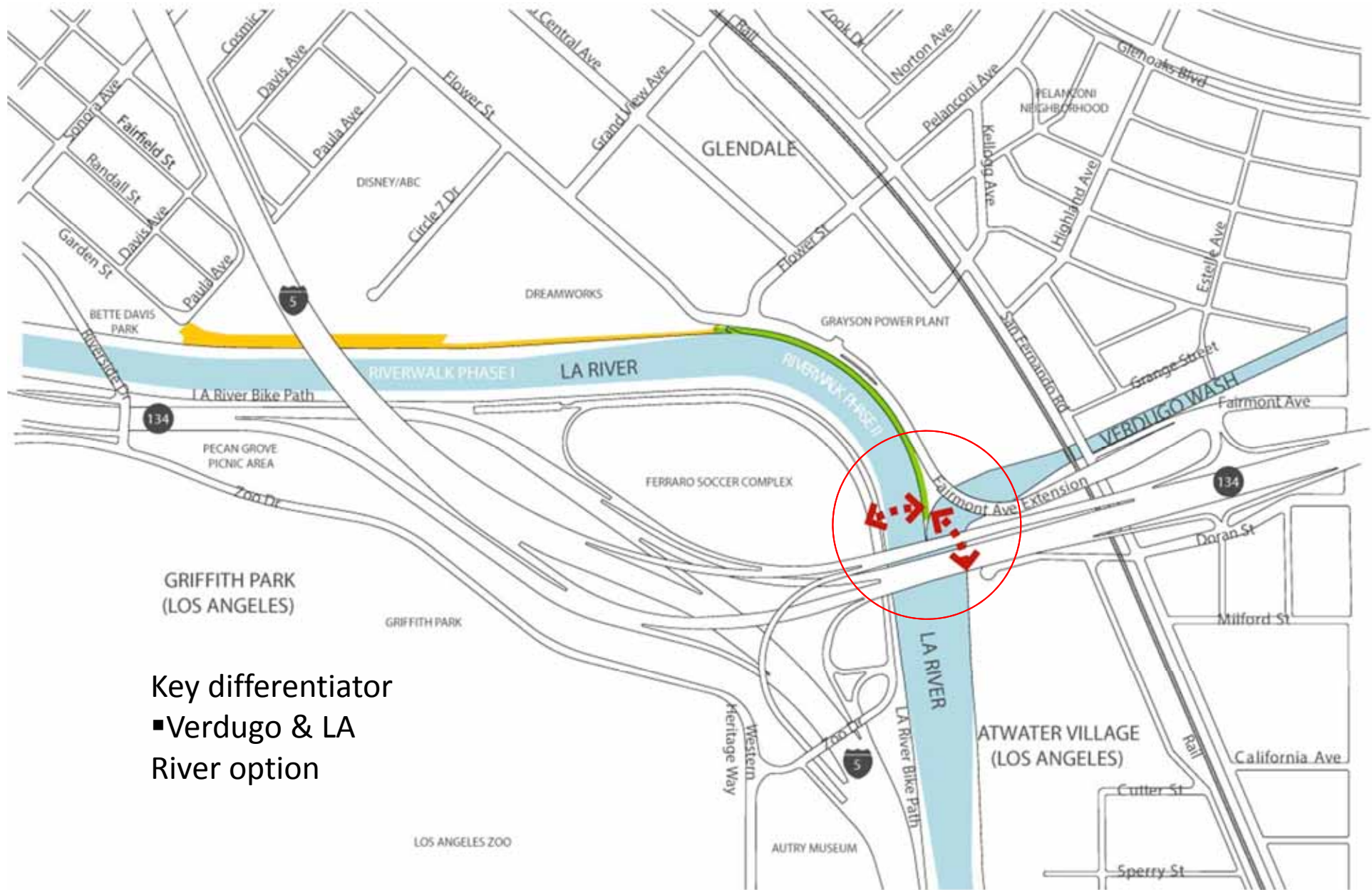


WORKSHOP #1 BRIDGE LOCATION REVIEW



Key differentiator
▪ Equestrian Access

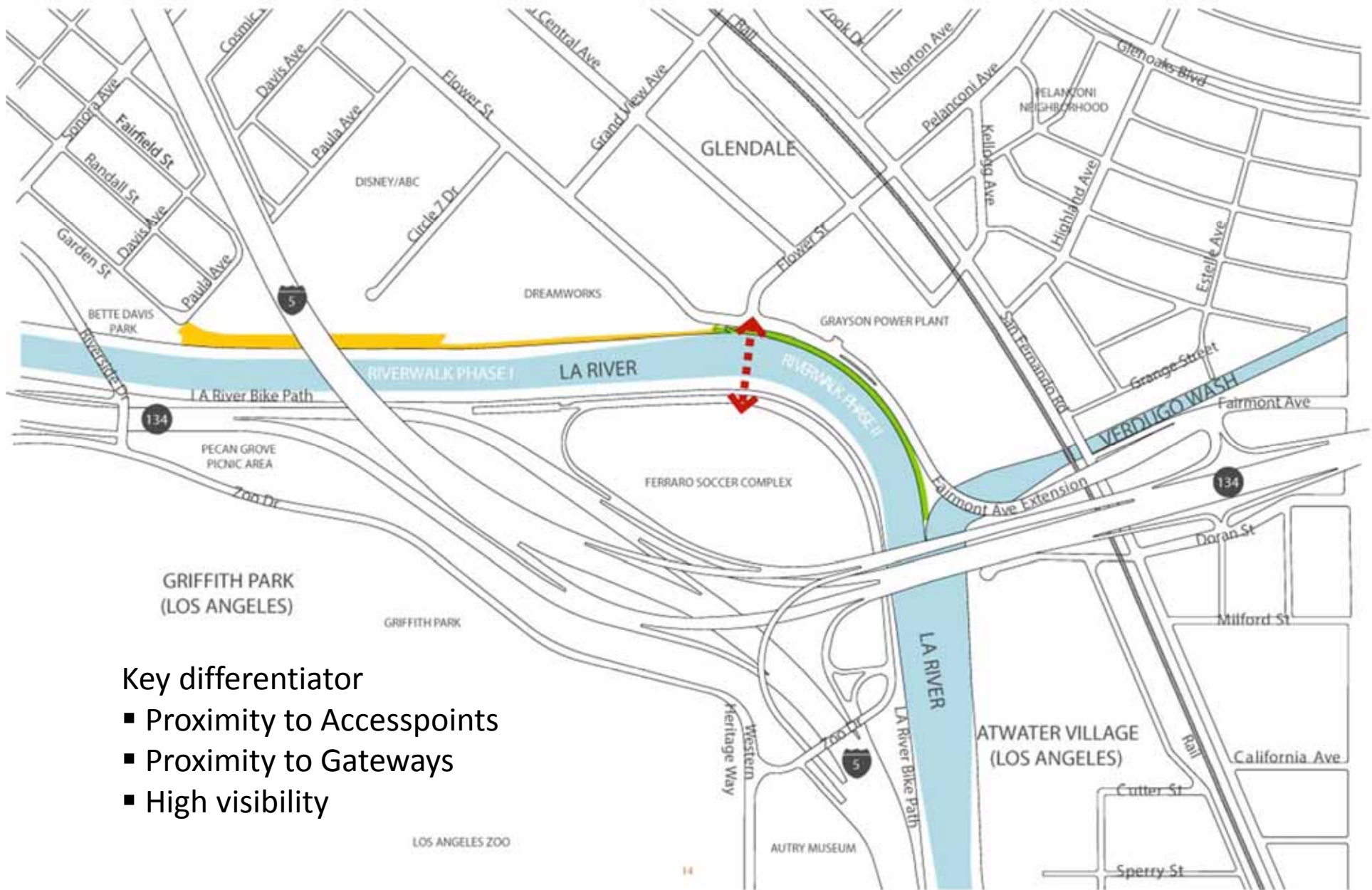
WORKSHOP #1 BRIDGE LOCATION REVIEW



Key differentiator

- Verdugo & LA River option

WORKSHOP #1 BRIDGE LOCATION REVIEW

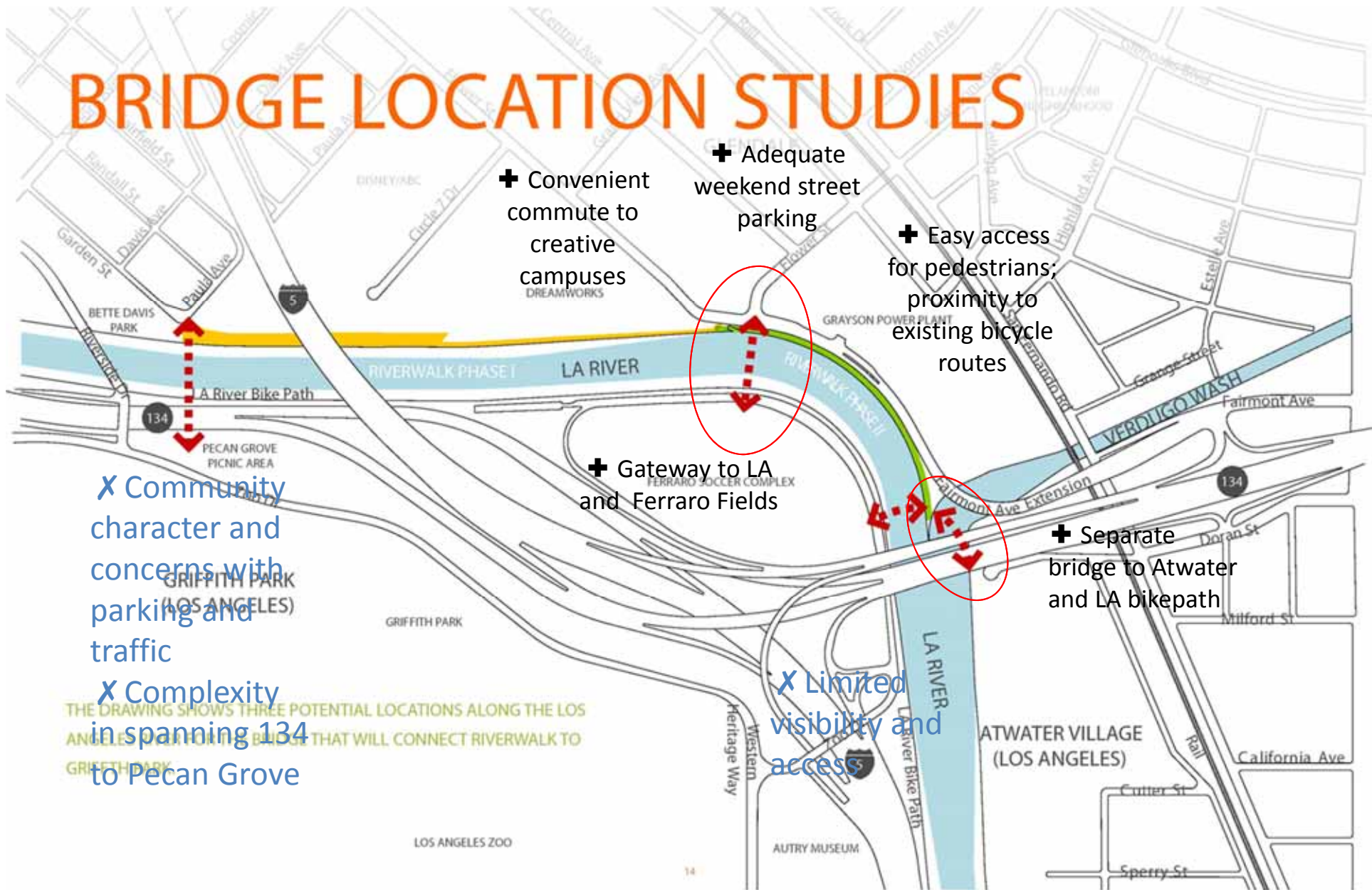


Key differentiator

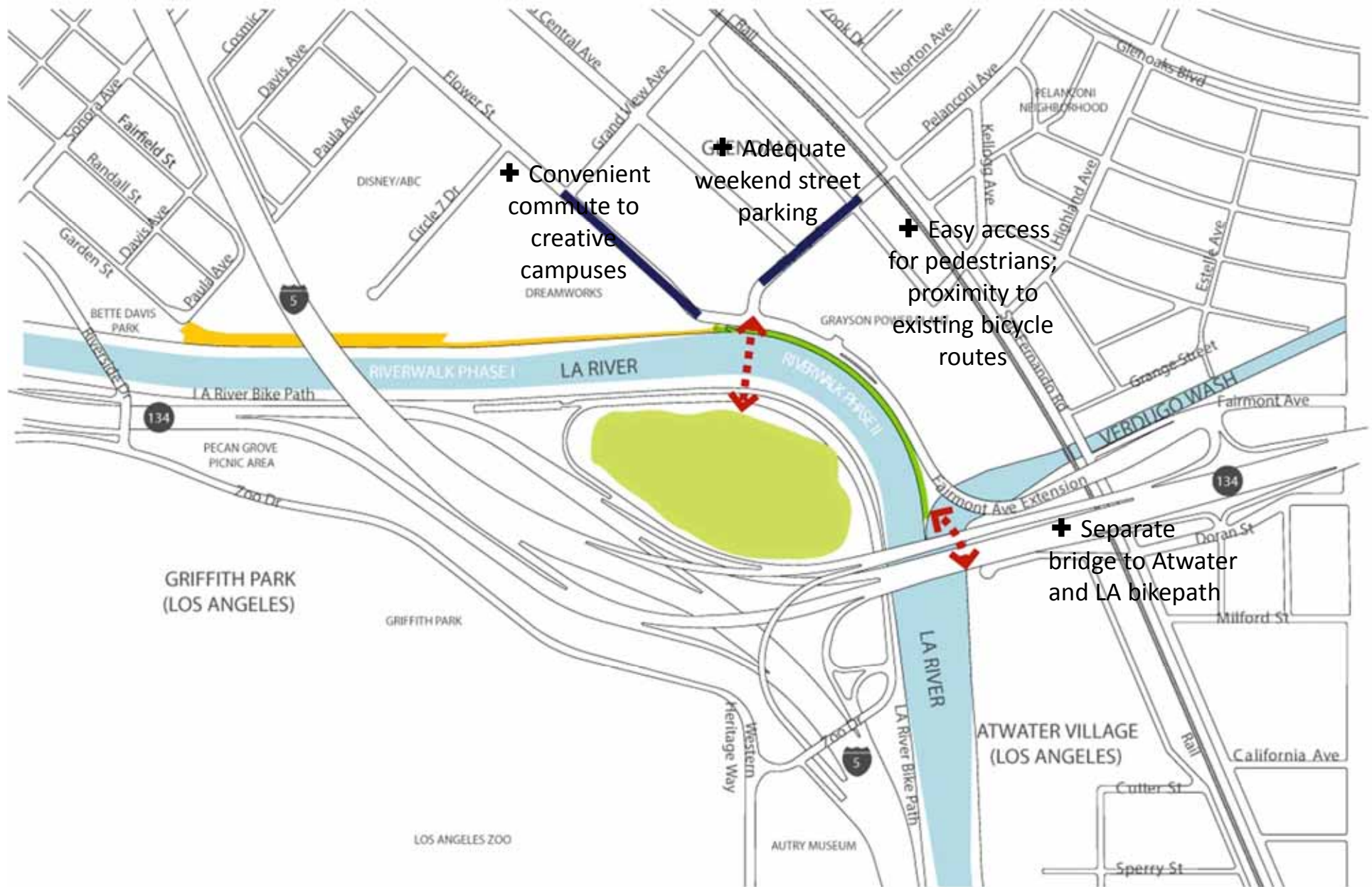
- Proximity to Accesspoints
- Proximity to Gateways
- High visibility

WORKSHOP #2 BRIDGE LOCATION ANALYSIS

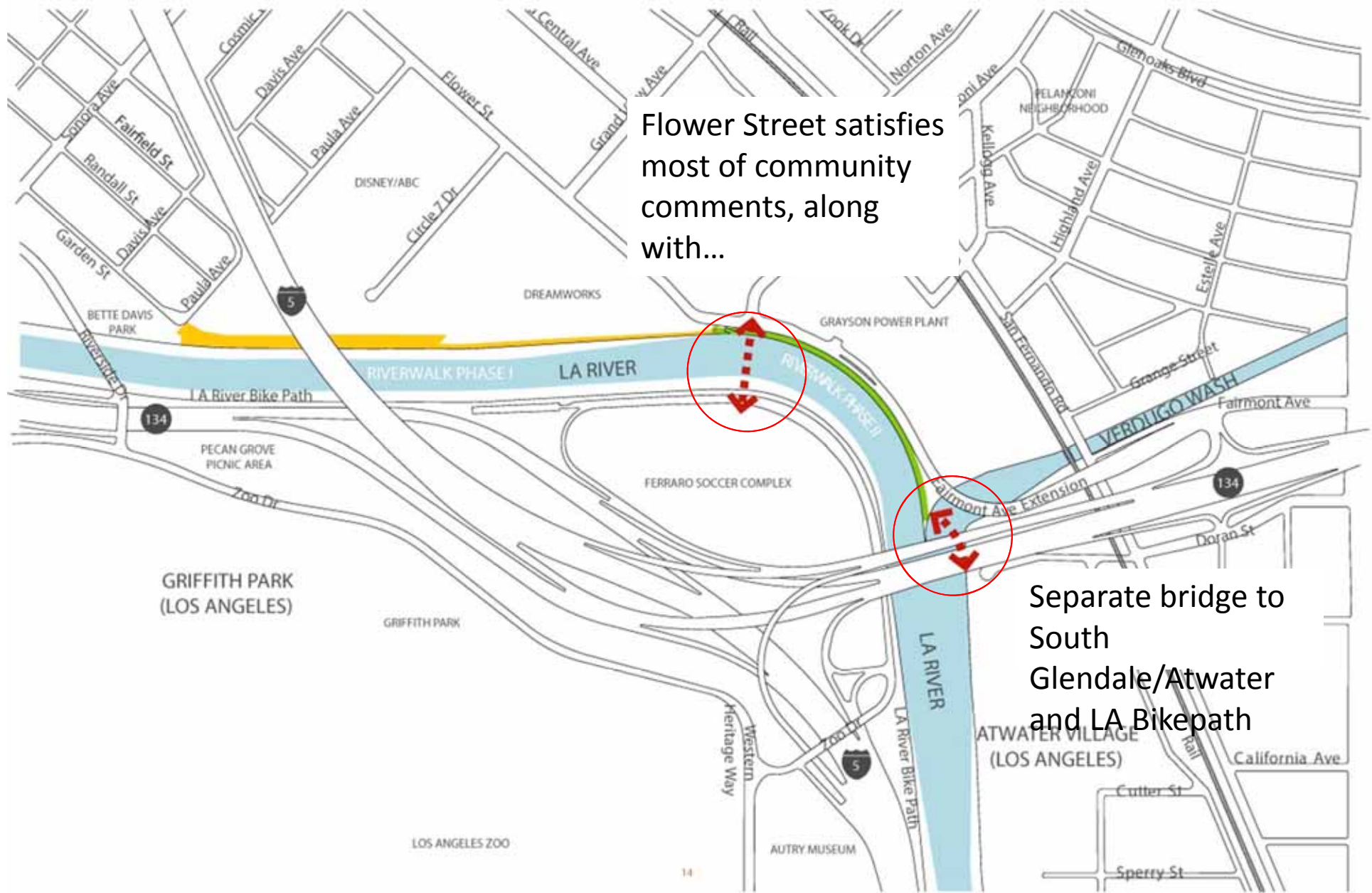
BRIDGE LOCATION STUDIES



WORKSHOP #2 BRIDGE LOCATION ANALYSIS



WORKSHOP #2 BRIDGE LOCATION REVIEW



SITE VIEWS FROM CENTRAL LOCATION – UPSTREAM



GLENDAL NARROWS RIVERWALK PROJECT - "JEWEL AT THE BEND"

SITE VIEWS FROM CENTRAL LOCATION – DOWNSTREAM



GLENDALE NARROWS RIVERWALK PROJECT - "JEWEL AT THE BEND"

SITE AERIAL



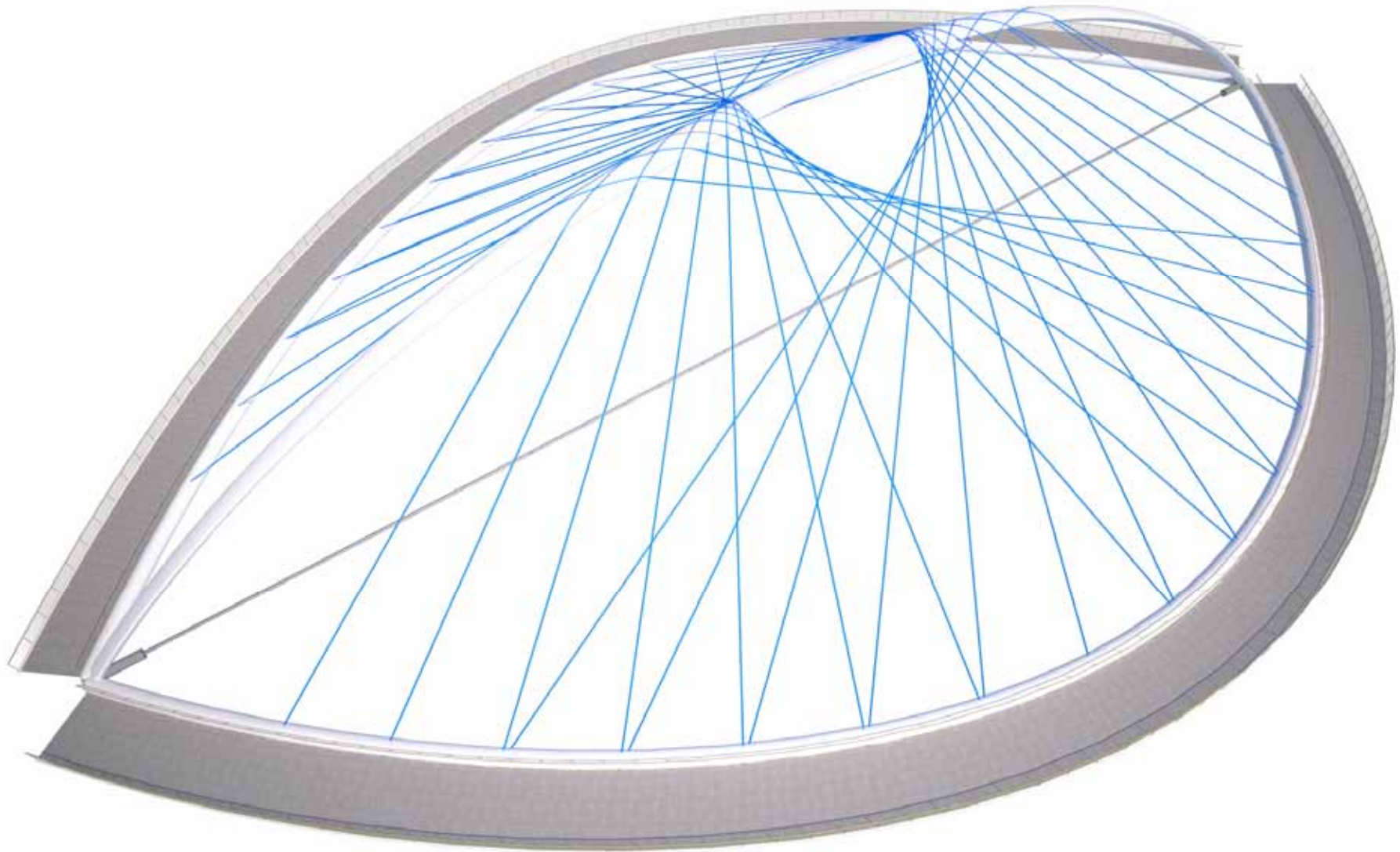
GLENDAL NARROWS RIVERWALK PROJECT - "JEWEL AT THE BEND"

LANDSCAPE PLAN AND SITE SECTION



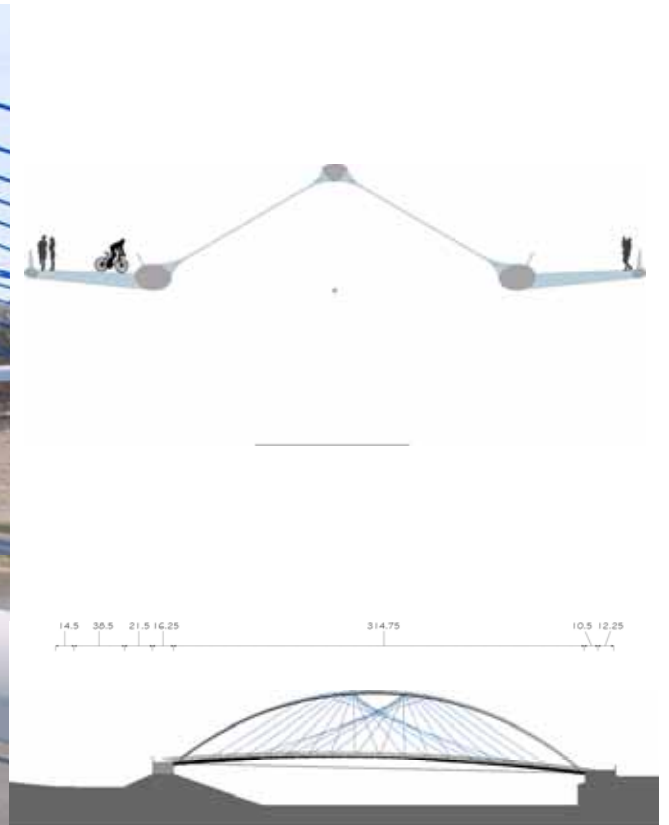
GLENDAL NARROWS RIVERWALK PROJECT - "JEWEL AT THE BEND"

THE EYE – OPTION A



GLENDALE NARROWS RIVERWALK PROJECT - "JEWEL AT THE BEND"

THE EYE – OPTION A



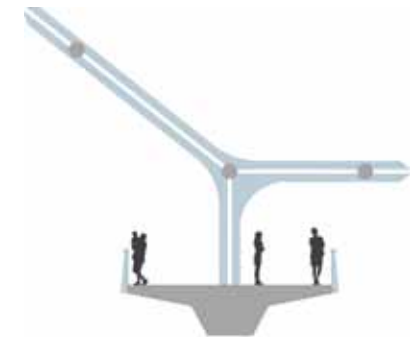
GLENDALE NARROWS RIVERWALK PROJECT - "JEWEL AT THE BEND"

SOLAR ARCH – OPTION B



GLENDAL NARROWS RIVERWALK PROJECT - "JEWEL AT THE BEND"

SOLAR ARCH – OPTION B

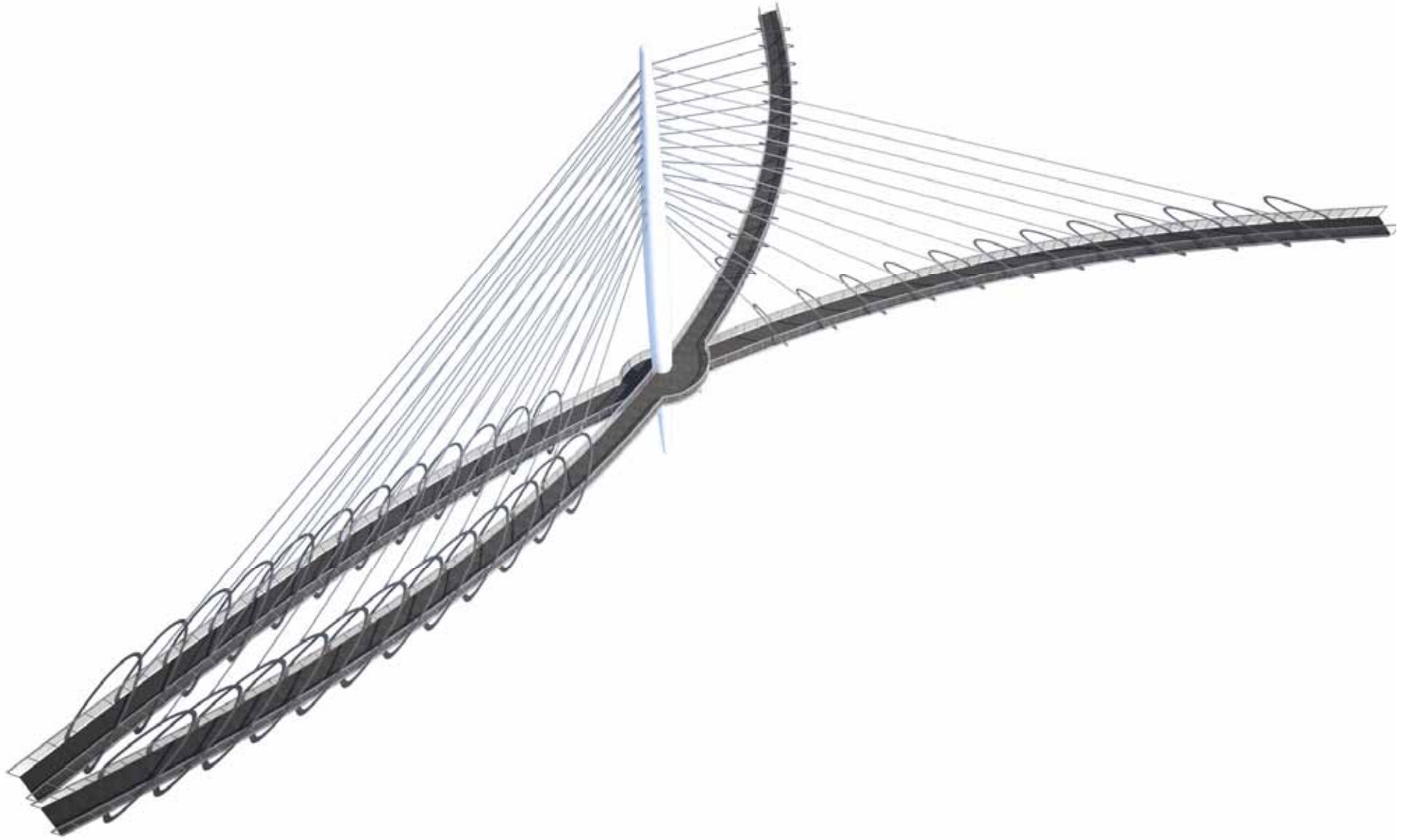


14.5 36.5 21.5 14.25 314.75 10.5 12.25



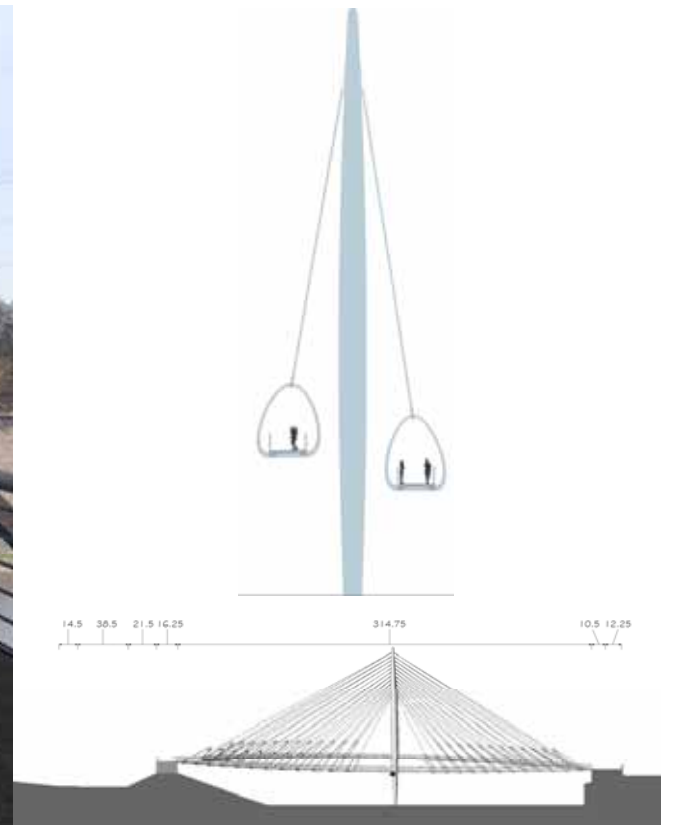
GLENDALE NARROWS RIVERWALK PROJECT - "JEWEL AT THE BEND"

THE CROSSOVER – OPTION C



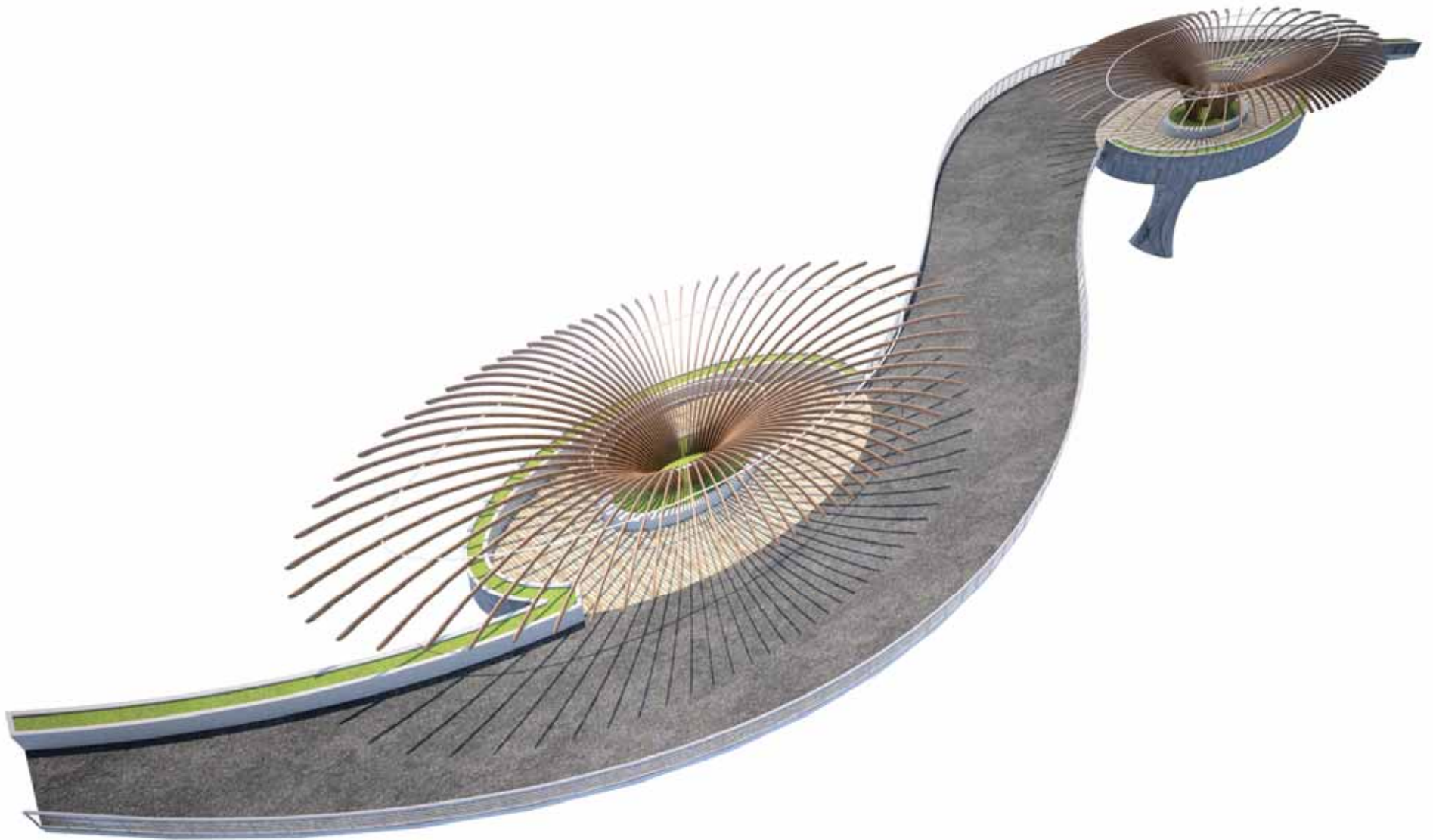
GLENDALE NARROWS RIVERWALK PROJECT - "JEWEL AT THE BEND"

THE CROSSOVER – OPTION C



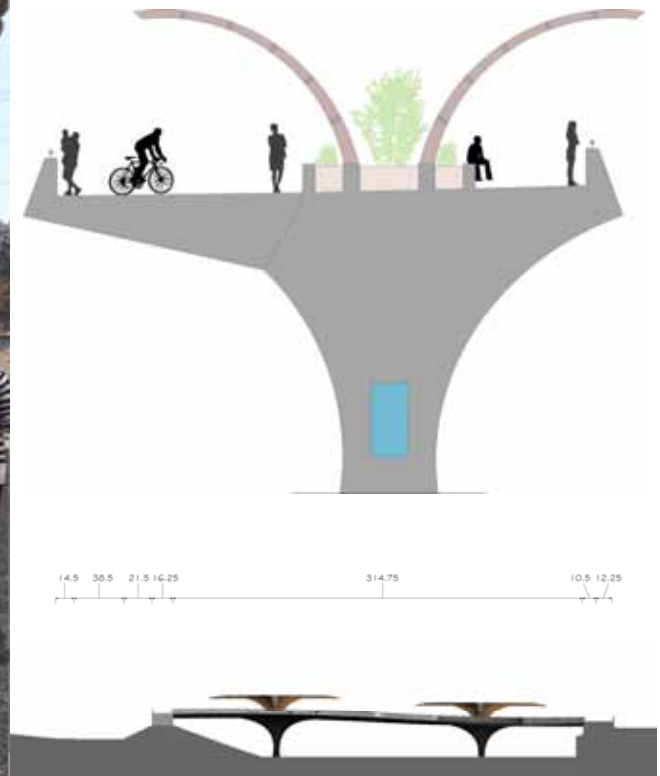
GLENDAL NARROWS RIVERWALK PROJECT - "JEWEL AT THE BEND"

THE GARDEN – OPTION D



GLENDAL NARROWS RIVERWALK PROJECT - "JEWEL AT THE BEND"

THE GARDEN – OPTION D



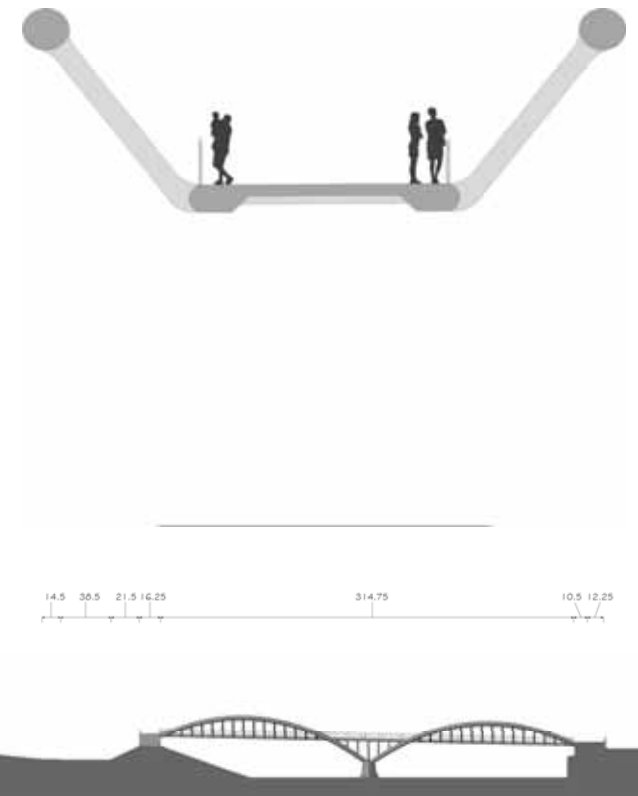
GLENDALE NARROWS RIVERWALK PROJECT - "JEWEL AT THE BEND"

CONCRETE TRUSS – OPTION E



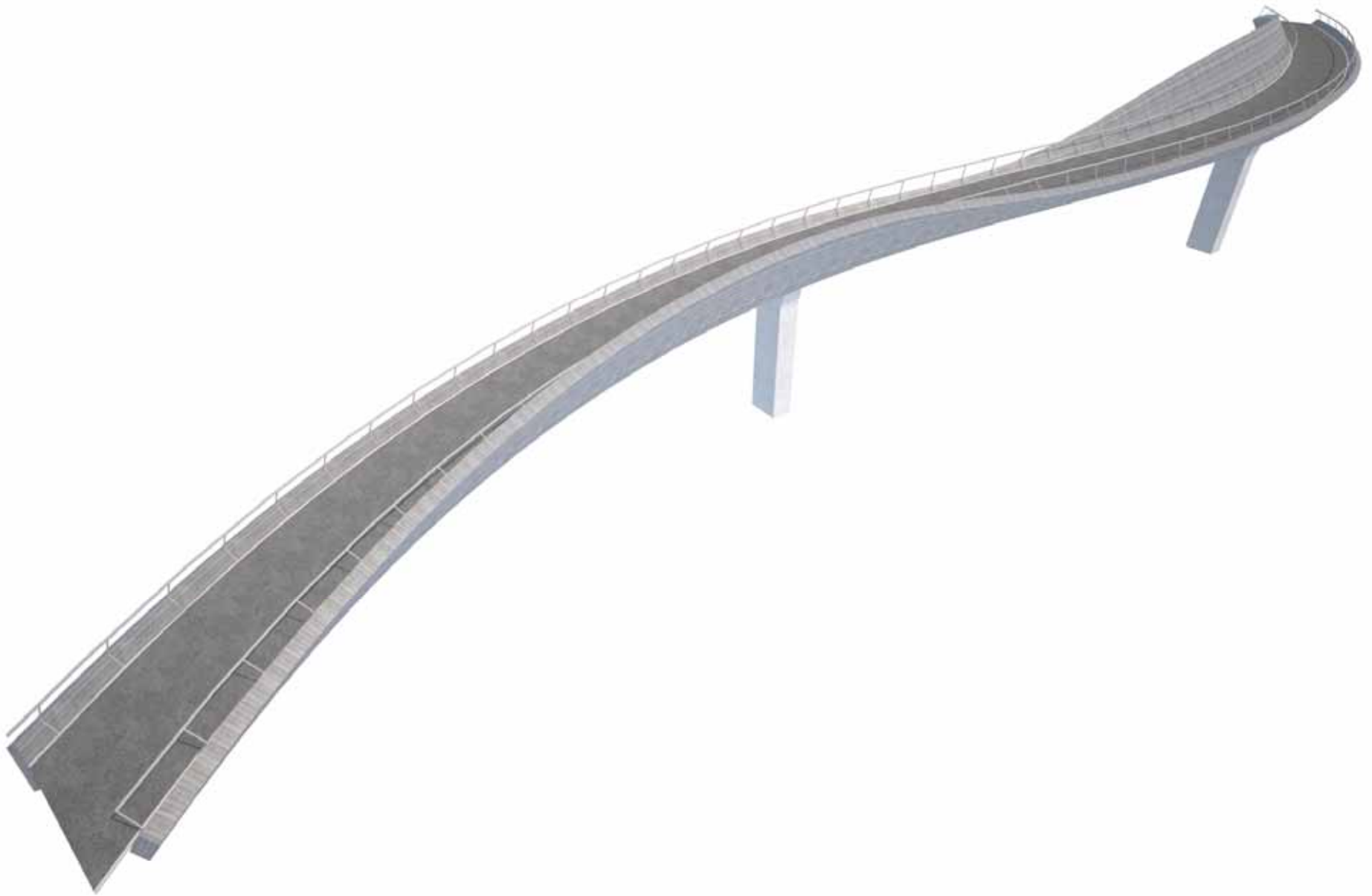
GLENDAL NARROWS RIVERWALK PROJECT - "JEWEL AT THE BEND"

CONCRETE TRUSS – OPTION E



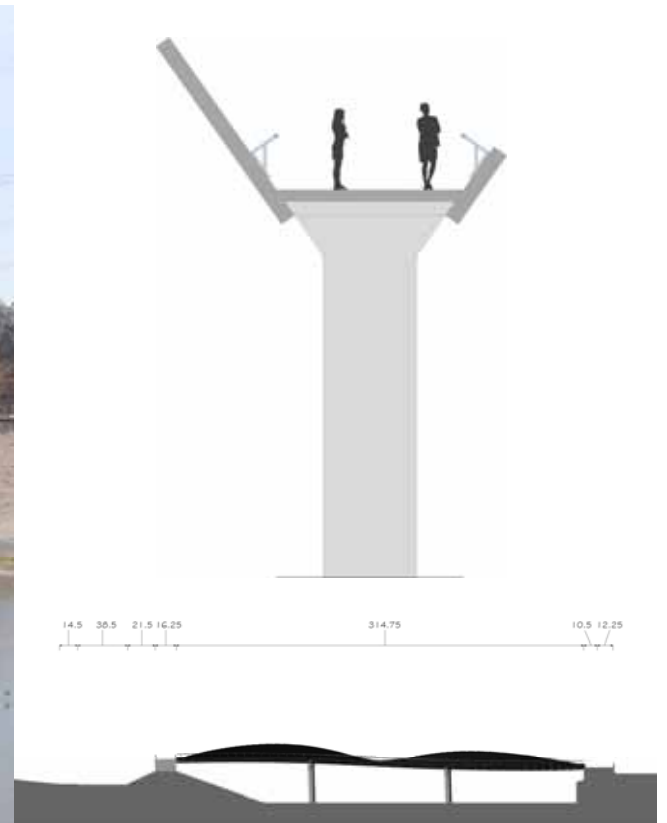
GLENDALE NARROWS RIVERWALK PROJECT - "JEWEL AT THE BEND"

S CURVE BEAM – OPTION F



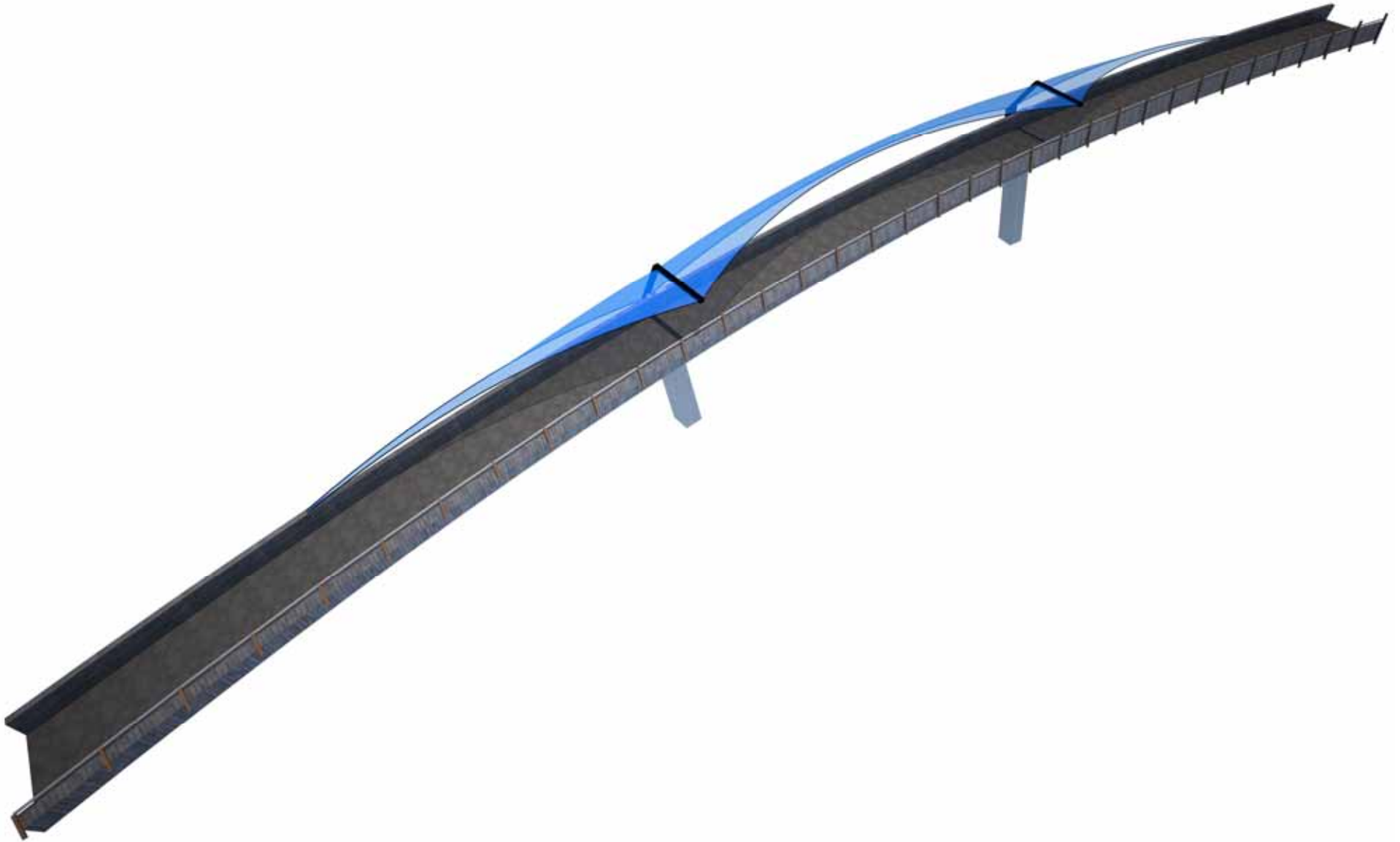
GLENDALE NARROWS RIVERWALK PROJECT - "JEWEL AT THE BEND"

S CURVE BEAM – OPTION F



GLENDAL NARROWS RIVERWALK PROJECT - "JEWEL AT THE BEND"

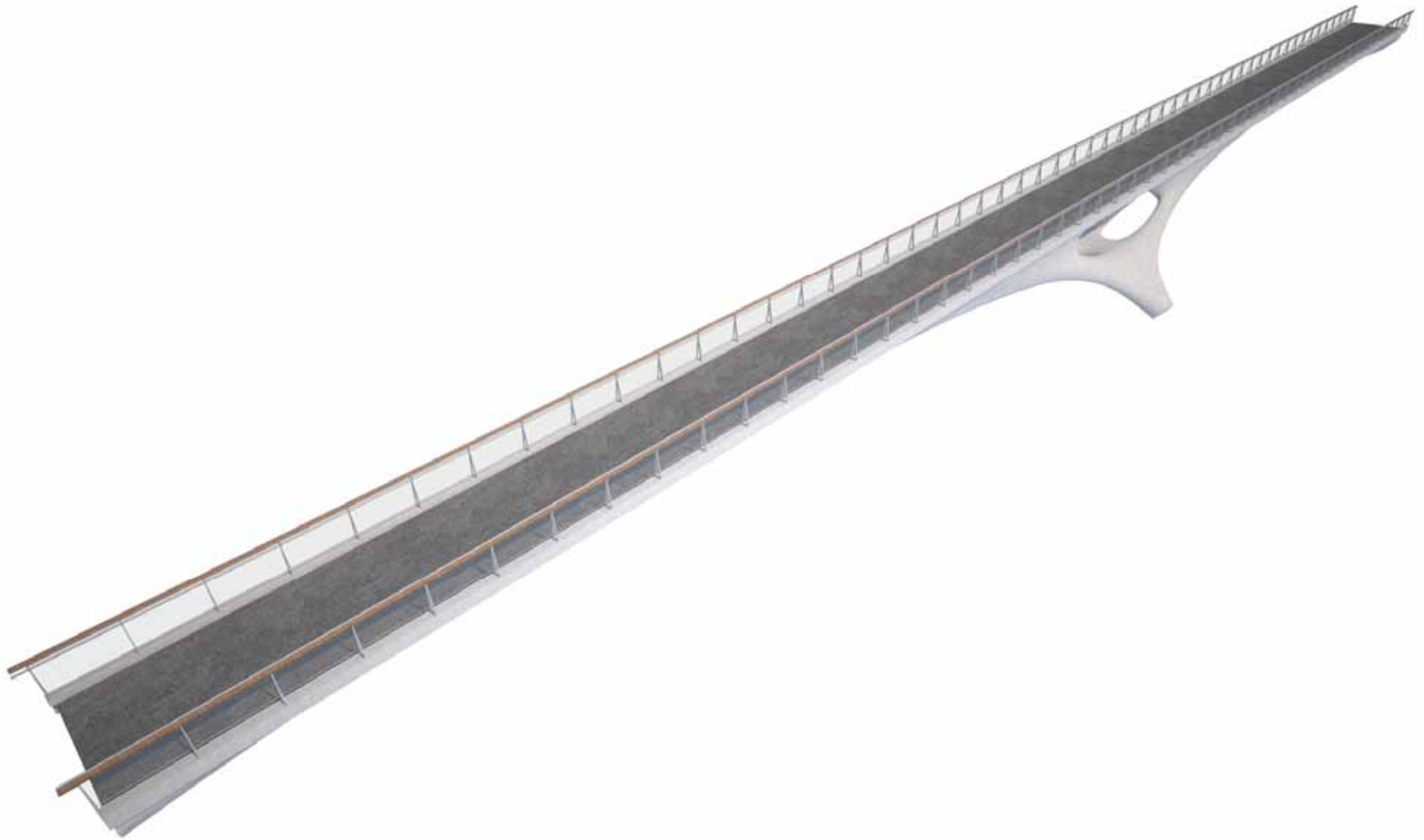
ASYMMETRICAL BEAM - — OPTION G



GLENDALE NARROWS RIVERWALK PROJECT - "JEWEL AT THE BEND"

ASYMMETRICAL BEAM – OPTION G

MESH HAUNCH – OPTION H



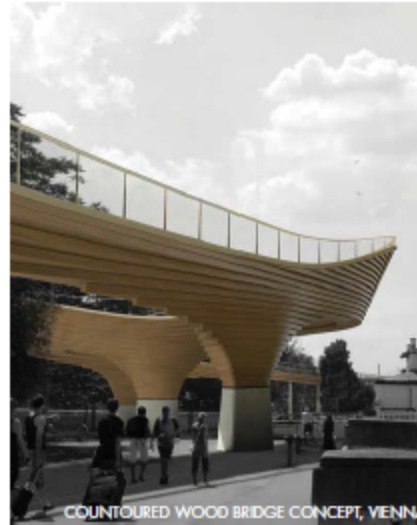
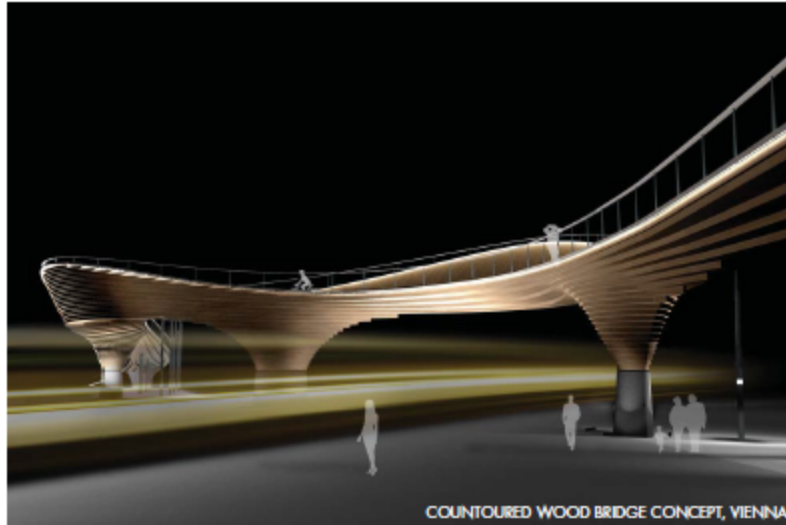
GLENDALE NARROWS RIVERWALK PROJECT - "JEWEL AT THE BEND"

MESH HAUNCH – OPTION H



GLENDALE NARROWS RIVERWALK PROJECT - "JEWEL AT THE BEND"

PRECEDENT



GLENDAL NARROWS RIVERWALK PROJECT - "JEWEL AT THE BEND"

PRECEDENT



GLENDAL NARROWS RIVERWALK PROJECT - "JEWEL AT THE BEND"

PRECEDENT



GLENDAL NARROWS RIVERWALK PROJECT - "JEWEL AT THE BEND"

PRECEDENT



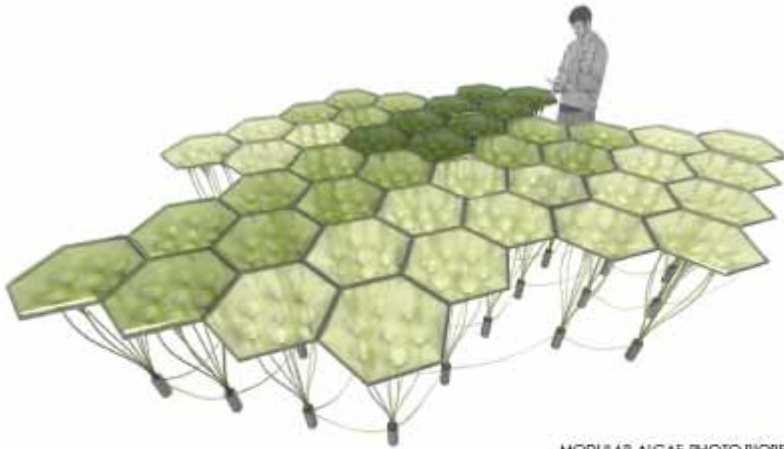
GLENDAL NARROWS RIVERWALK PROJECT - "JEWEL AT THE BEND"

PRECEDENT



GLENDAL NARROWS RIVERWALK PROJECT - "JEWEL AT THE BEND"

PRECEDENT



MODULAR ALGAE PHOTO-BIOREACTOR



ALGAE BIOREACTOR TOWER



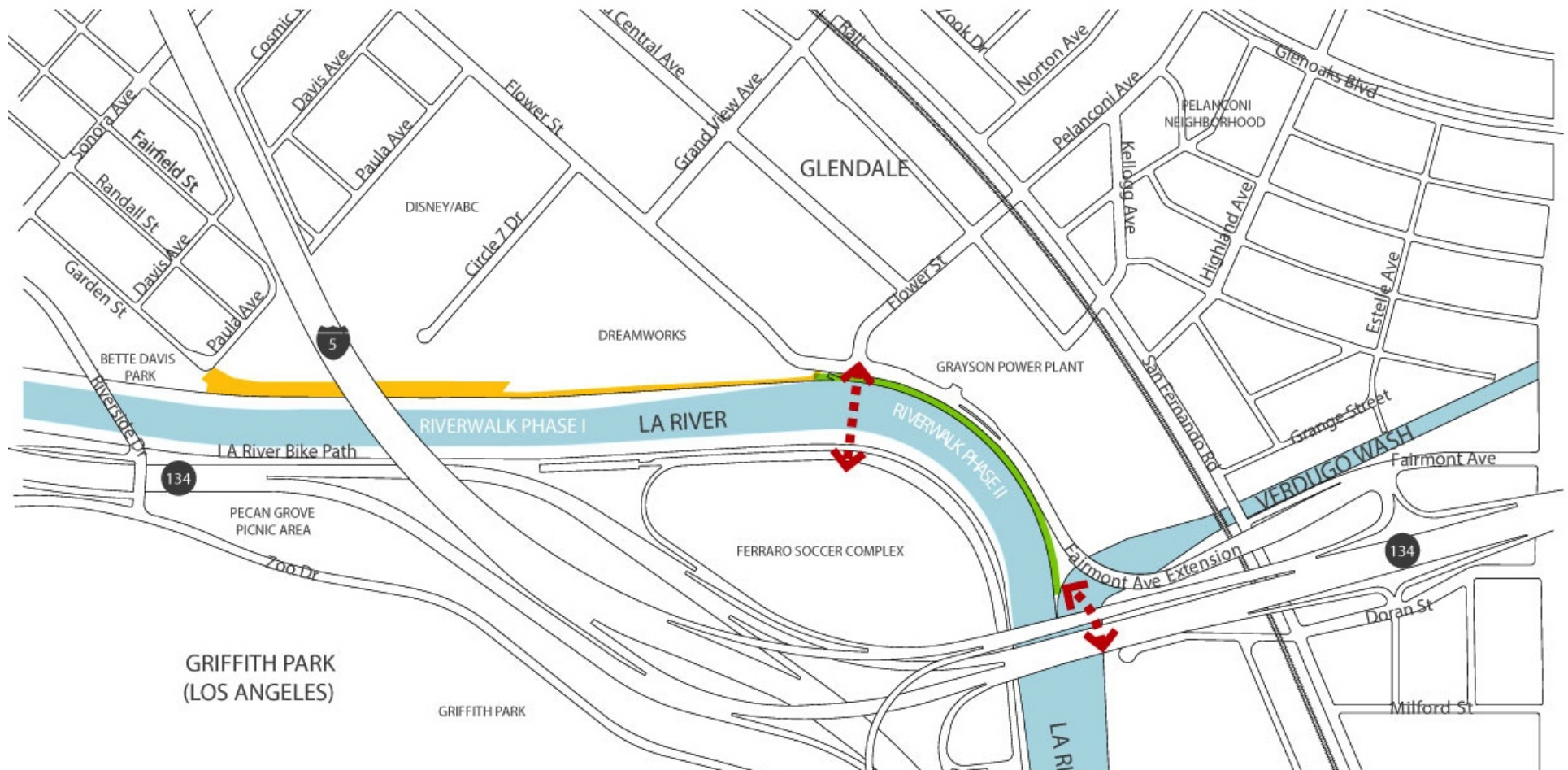
CELLULAR SOLAR TOWER, ITALY



ROOF TOP WIND FARM, OKLAHOMA

GLENDALE NARROWS RIVERWALK PROJECT - "JEWEL AT THE BEND"

WORKSHOP #2

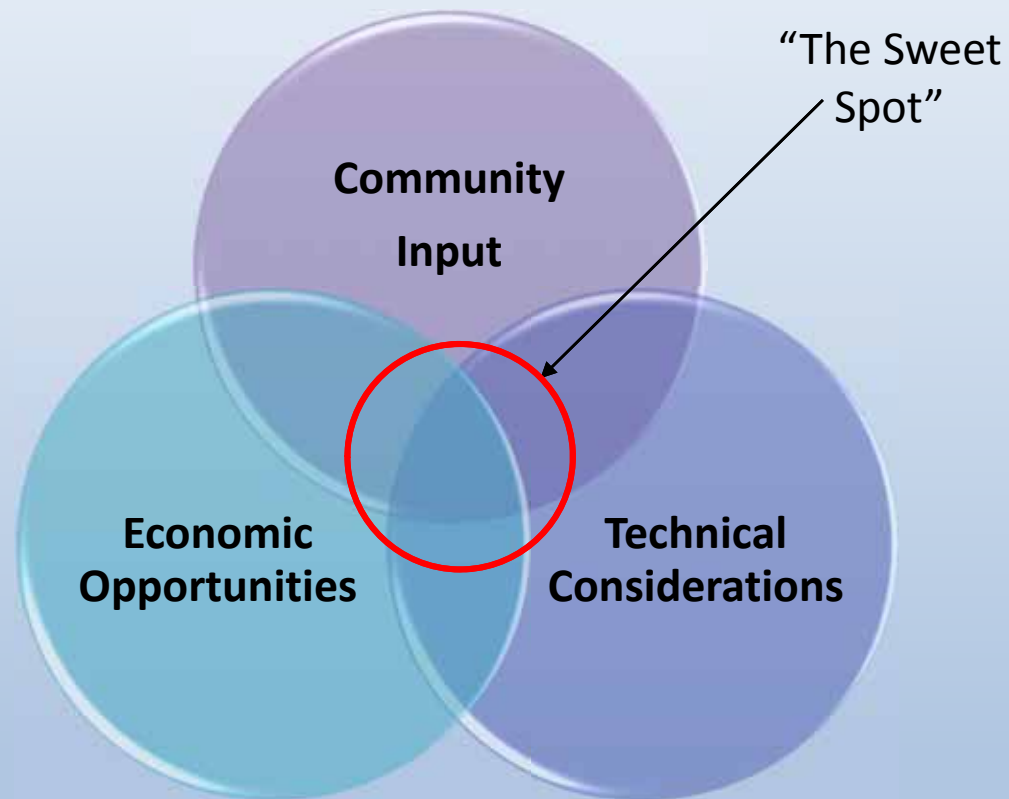


Bridge development for Workshop #3

Green/Blue/Red - Exercise

GLENDALE NARROWS RIVERWALK PROJECT - "JEWEL AT THE BEND"

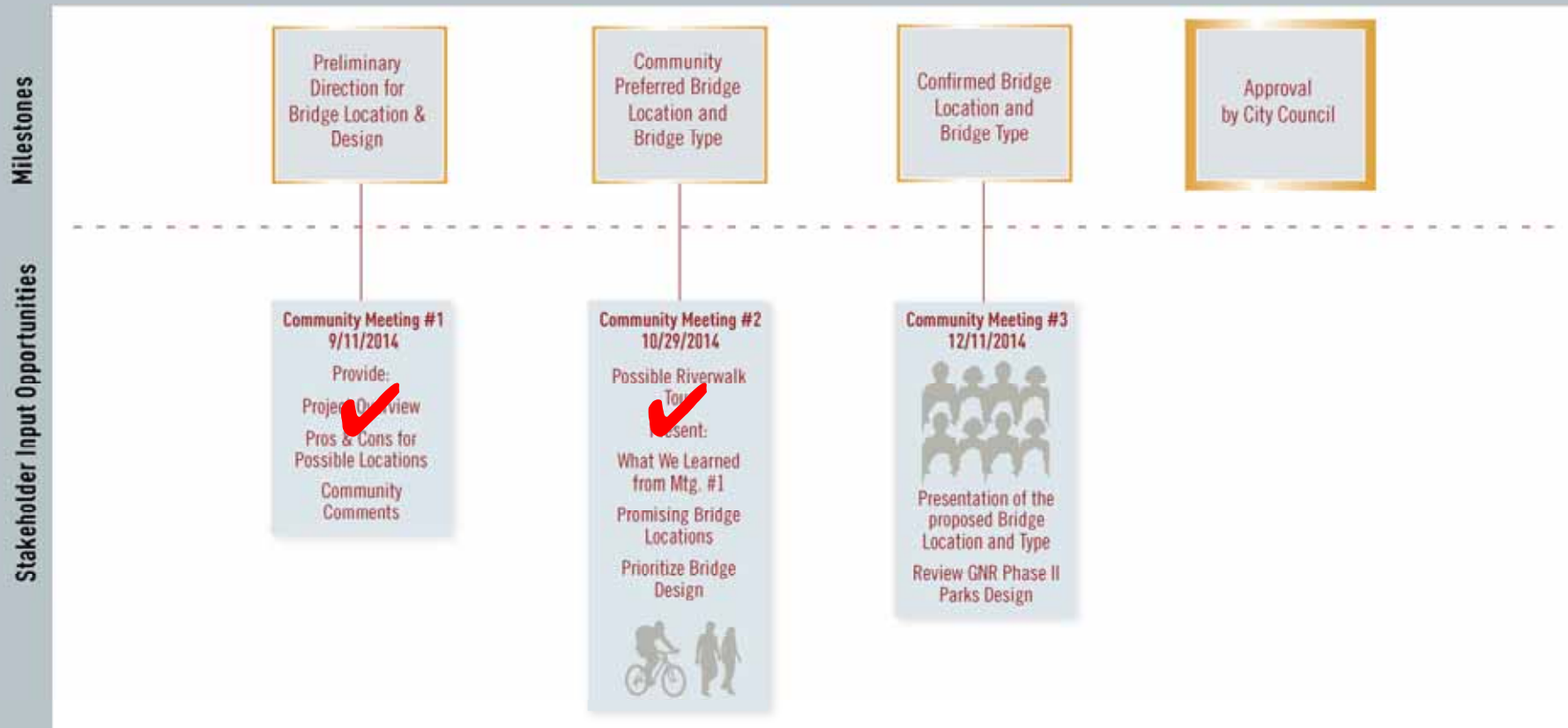
KEY FACTORS INFLUENCING PROJECT DECISIONS



NEXT STEPS

Glendale Riverwalk Phases II and III A Joint Community/City Partnership

The Public Participation Process:



NEXT STEPS

- **Community Meeting #3**

Thursday, December 11, 2014

6:30 – 8 pm

Pacific Community Center Gymnasium

501 S. Pacific Avenue, Glendale, CA 91204

- **Contact**

Peter Vierheilig, R.L.A.

City of Glendale

Public Works Engineering

at (818) 937-8263, or pvierheilig@glendaleca.gov



CITY OF GLENDALE

Public Works

Roubik Golanian

Peter Vierheilig

Kevin Carter

Community Services & Parks

Jess Duran

Marc Stirdivant

DESIGN TEAM

Atkins – PM/Engineering

John Merkler AIA

TY Lin – Bridge Design

Joe Tognoli/Michael Fitzpatrick/Hunter

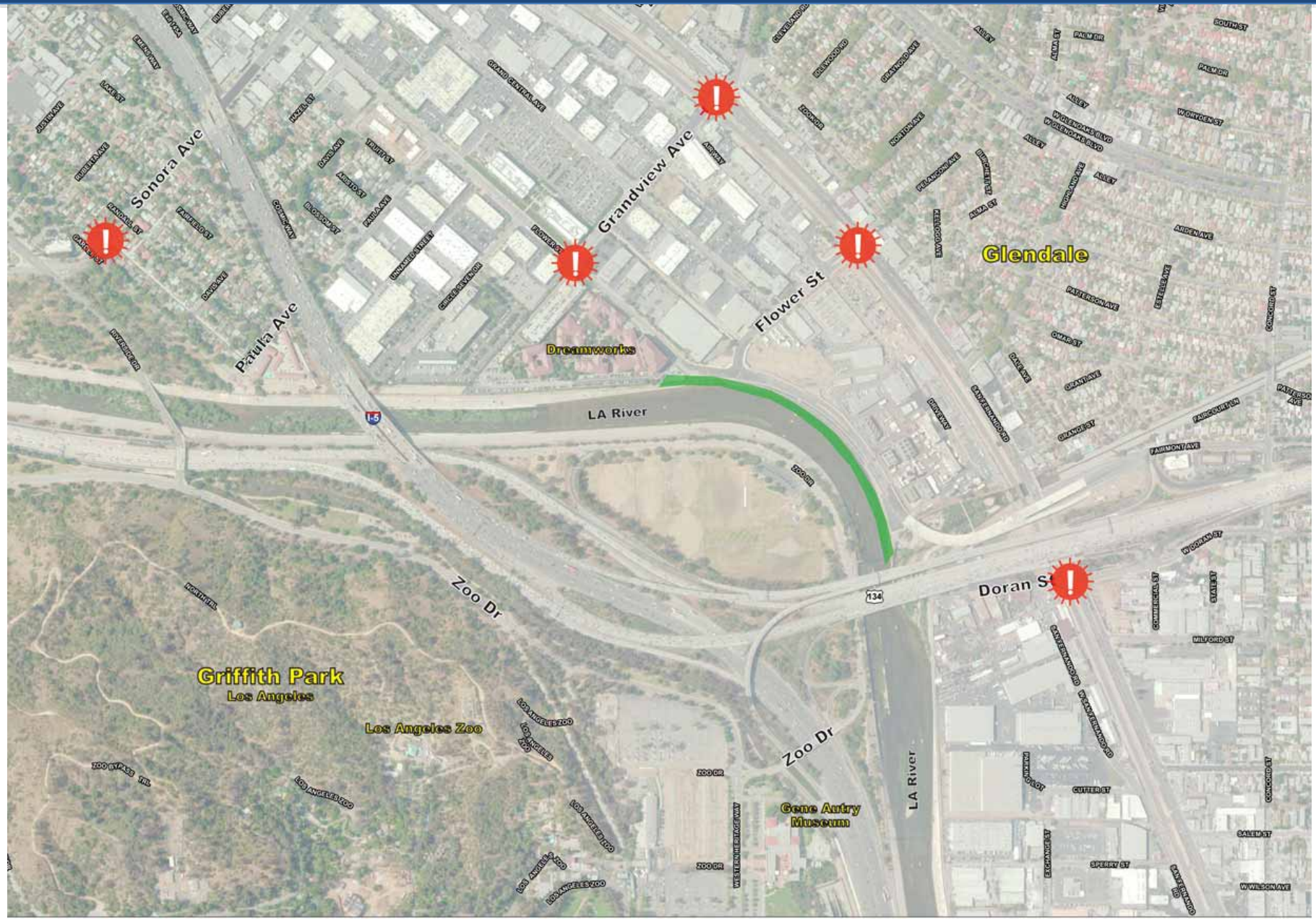
Ruthrauff


Katherine Padilla Associates – Outreach

Katherine Padilla

THANK YOU!

ACCESS





Riverwalk Phase II  Proposed Gateway

GLENDALE NARROWS RIVERWALK PROJECT - "JEWEL AT THE BEND"

GATEWAYS



 Riverwalk Phase II  Proposed Access Point

GLENDALE NARROWS RIVERWALK PROJECT - "JEWEL AT THE BEND"