



## Catalina Verdugo Adobe

2211 Bonita Drive  
Glendale, CA 91208  
(818) 244-2841 - Tours ONLY

### HOURS OF OPERATION

Daily 8:00 am-Dusk

Guided Tours: Scheduled Tours Only – Please call to schedule

Docent: Days of the Verdugos Heritage Association

### FACILITY DESCRIPTION \*

- The park is 1.3 acres in size and is nestled at the base of the Verdugo Mountains in a residential neighborhood.
- Amenities include a walking trail, a garden and a shaded picnic area with wooden tables, benches and electric outlets.
- Smoking, barbecues, and amplified sound are NOT permitted because of the historic nature of the facility.

### HISTORY

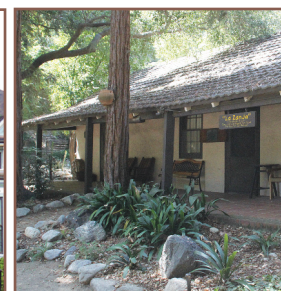
- The Catalina Verdugo Adobe is registered as California Historical Landmark #637 and Glendale Register of Historic Resources #1.
- The Adobe is the oldest structure in the City of Glendale. As with many early structures, the construction date of the Verdugo Adobe is uncertain. It is said the Adobe was built in 1828, but some research suggests that it dates to 1860. It was the home of Catalina Verdugo who, with her brother Julio, owned much of today's northeast Glendale. Their father, Don Jose Maria Verdugo, was the original recipient of Rancho San Rafael, the Spanish land grant that encompassed large portions of Glendale, Burbank, and Eagle Rock.
- The grounds contain the remnants of the "Oak of Peace," under which a meeting was held in 1847 that led, a few days later, to the signing of the peace treaty, Treaty of Cahuenga, that ended the Mexican-American War.
- The Adobe originally consisted of the main room and the south wing. The north wing was added in the early 1900's, after it was sold to land developer F.P. Newport.
- In 1946, the property was sold to Dr. Ernest Bashor, and his family remained there until it was sold to the City of Glendale in 1989. It is fortunate that the historic value of the original house remained preserved.
- At present, the Museum focuses on the Verdugo family and their lifestyle in the 1800's.

City of Glendale, Community Services & Parks  
613 E. Broadway, Room 120  
Glendale, CA 91206-4391



City of Glendale  
Community Services & Parks

## Historic Homes, Museum & Garden



FOR RESERVATIONS, CALL  
COMMUNITY SERVICES & PARKS  
AT (818) 548-2184

FOR TOUR INFORMATION, CALL  
THE DOCENTS AT THE PHONE  
NUMBER LISTED UNDER  
EACH FACILITY.



@MyGlendaleParks

# Doctors House Museum & Gazebo

Inside Brand Park  
1601 West Mountain Street  
(818) 242-7447

## HOURS OF OPERATION

Guided Tours:

Sundays 2:00 pm - 4:00 pm

(Closed during the month of July and December, on holidays and during inclement weather.)

Go to [glendalehistorical.org/museum-tours](http://glendalehistorical.org/museum-tours) or email [doctorshouse@glendalehistorical.org](mailto:doctorshouse@glendalehistorical.org) for more information.

Suggested Donation: \$10.00

Docent: The Glendale Historical Society

## FACILITY DESCRIPTION \*

- The Doctors House Museum is an authentically restored Queen Anne-Eastlake style home built around 1888.
- The Doctors House lawn area and gazebo are available for reservation for weddings and other special events.
- Smoking, barbecues, and amplified sound are NOT permitted because of the historic nature of the facility.

## HISTORY

- The two-story house originally stood at 921 East Wilson Avenue in central Glendale, but was moved to its present location in 1980.
- Four early doctors owned it in succession, giving the house its name. It was later occupied by silent screen icon Nell Shipman and her family in the early 1900s.
- Threatened with demolition in 1979, community activists organized to save it and formally incorporated The Glendale Historical Society on October 24, 1979.
- The Glendale Historical Society dedicated the Doctors House to the City of Glendale on September 12, 1982 after spending thousands of volunteer hours on restoration.
- The Doctors House is registered as Glendale Register of Historic Resources #6.



## "Shoseian" Whispering Pine Teahouse & Friendship Garden

Inside Brand Park  
1601 West Mountain Street  
Glendale, CA 91201  
(310) 849-5432

## HOURS OF OPERATION

Friendship Garden: Monday - Thursday 10:00 am - 3:00 pm  
Teahouse Events/Programs: Third Sunday of the month.

Go to [www.GlendaleTeaHouse.org](http://www.GlendaleTeaHouse.org) or email [info@glendaleteahouse.org](mailto:info@glendaleteahouse.org) for more information.

Docent: Friends of Shoseian

## FACILITY DESCRIPTION \*

- The traditional teahouse was built in 1974 through the combined efforts of the Sister Cities of Glendale and Higashi-Osaka, Japan. It is one of the few traditional Japanese Teahouses open to the public in the United States.
- The Teahouse, which was designed by architect Hayahiko Takase, is a unique blending of western and eastern design and an apt expression of the spirit of cross-cultural community.
- Nestled at the foot of the Verdugo Mountains beside a koi pond in a charming Japanese-style garden setting, the Teahouse is in a unique position to outreach to the community of Glendale and greater Los Angeles.
- The Japanese Friendship Garden surrounding the Teahouse is available for weddings and other special events.

## HISTORY

- The Teahouse represents the spirit of goodwill, lasting peace and friendship between the people of Japan and the United States.
- Given the name "Shoseian" or "Whispering Pine Teahouse" by Genshitsu Sen, the Fifteenth Grand Tea Master of the Urasenke School of Tea in Japan, the Teahouse is designated an official Tearoom. Dr. Yamazaki of Higashi-Osaka provided initial support for the Teahouse and Gardens.
- Through recent cooperative efforts by the City of Glendale and Friends of Shoseian, the Teahouse was refurbished and designated as Glendale Register of Historic Resources #46.

# Casa Adobe de San Rafael & Park

1330 Dorothy Drive  
Glendale, CA 91202  
(818) 396-8640 / (818) 396-7844

## HOURS OF OPERATION

Daily 8:00am-Dusk

Guided Tours: First Sunday of the Month, 1:00pm - 3:00pm and by appointment only.

A Fiesta de las Luminarias (Festival of Lights) and Christmas Open House is held during the month of December.

Go to [glendalebeautiful.org/casaadobe](http://glendalebeautiful.org/casaadobe) or email [info@glendalebeautiful.org](mailto:info@glendalebeautiful.org) for more information.

Suggested Donation: \$2.00

Docent: Glendale Beautiful

## FACILITY DESCRIPTION \*

- The park is 1.6 acres in size.
- Amenities include a picnic pavilion which is available for small company or family picnics or gatherings, a turf area that is available for larger festival-type events, gas grill, sink, electrical outlets and public restroom facilities.
- Smoking, barbecues, and amplified sound are NOT permitted because of the historic nature of the facility

## HISTORY

- Casa Adobe de San Rafael is registered as California Landmark #235 and Glendale Register of Historic Resources #3.
- The Casa was built around 1870 by Tomas Sanchez, former sheriff of Los Angeles County, using adobe blocks to form the walls, which were then covered with stucco.
- In 1875, the property was sold, left abandoned and fell into a ruinous state.
- In 1930 the Casa was purchased by the California Medicinal Wine Company who planned to tear down the structure and remove the large eucalyptus trees on the property. Local neighbors and community members stopped the demolition and began a campaign to preserve the house as a historic landmark.
- The City of Glendale purchased the adobe in 1930 and by 1932 La Casa de Adobe de San Rafael was completely refurbished.
- Today, the adobe includes a Monterey-style corridor (covered porch), beautiful sunken garden, brick patio, sandy brown tile roof, and long narrow front windows adorned with teal shutters. Interior furnishings are from the 19th century.



\* Reasonable accommodations will be made upon request and wherever possible. Please notify the Therapeutic Recreation Supervisor at (818) 548-3783 within 72 hours of the event.