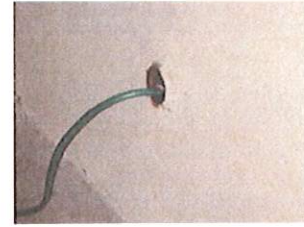
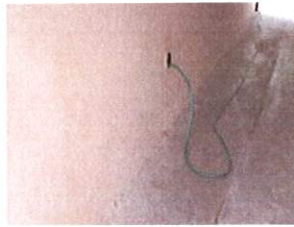


Swimming Pool Draining Procedure

The storm drain system and sewer system are two completely separate drainage systems. The storm drain system flows directly to the Los Angeles River, which eventually discharges the water into Long Beach Harbor without any treatment. The sewer system takes all household wastewater from toilets, showers and sinks and routes it through your plumbing system into the Los Angeles-Glendale Water Reclamation Plant. Once there, it receives three levels of filtration treatment before being discharged into the Los Angeles River.

Therefore, the preferred method of draining your swimming pool is to the sewer system because the water will be treated before it is discharged into the Los Angeles River. Oftentimes, homes are equipped with a sewer clean-out which can be utilized for draining your pool.



If the sewer system is not accessible, then pool owners should dechlorinate their pool water by allowing the water to sit in the sun and not add any chlorine for 10 or more days and verify the following prior to being discharged to the street:

- The residual chlorine can not exceed 0.1 mg/L (ppm)
- The pH is between 6.5 & 8.5
- The water is free of any unusual coloration
- There is no discharge of filter media
- There is no discharge of acid cleaning waste
- Any pipe connection to the storm drain system has permits from the city or county having jurisdiction



Compliance with these guidelines can be verified using a pool testing kit. In addition, if time does not permit allowing the water to sit 10 days in the sunlight, you may purchase dechlorinating chemicals from local pool supply companies.

By ensuring compliance with these criteria, you will make a significant contribution toward keeping pollutants out of Los Angeles County's creeks, streams and receiving waters and help to protect organisms that are sensitive to pool chemicals.